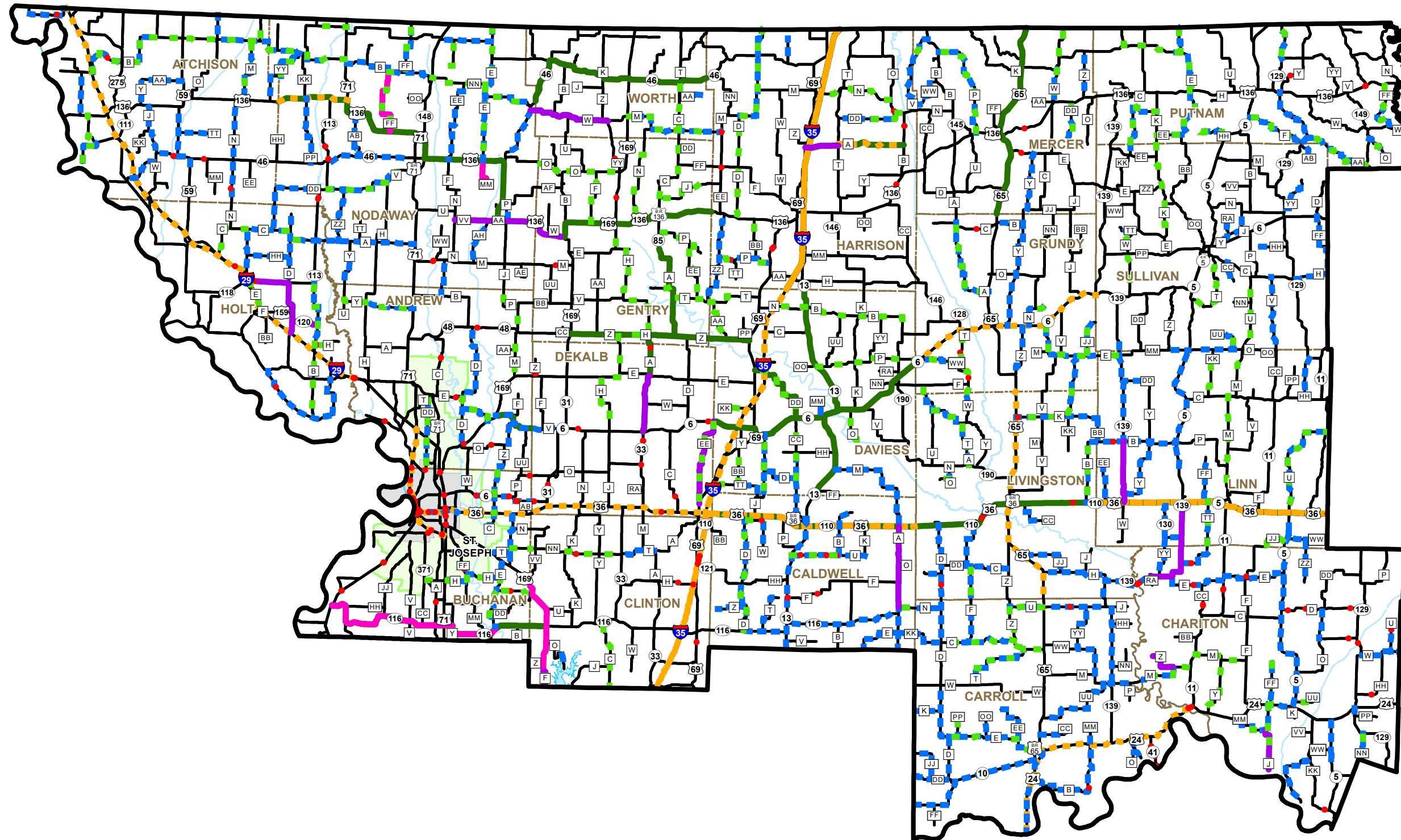


Maintenance Operations Pavement and Bridge Work Plan Calendar Year 2017 NORTHWEST DISTRICT



- - - Pipe Replacement
- Bridge Deck Sealing
- Chip Seal
- - - Asphalt Pavement Repair
- Pavement Preventative Maintenance
- - - Concrete Pavement Repair
- Crack Sealing
- Motorist Assist Routes
- Urbanized Area
- MPO Area

SFY 2016 Expenditures on all Transportation System Operations

Roadway:	\$23,300,000
Utilities and Tools:	\$15,100,000
Roadside ¹ :	\$6,400,000
Winter:	\$2,500,000
Incident Management:	\$700,000
Bridge:	\$2,900,000
Other ² :	\$2,700,000

¹ Includes incidental construction such as signage, striping and edge rut repair.

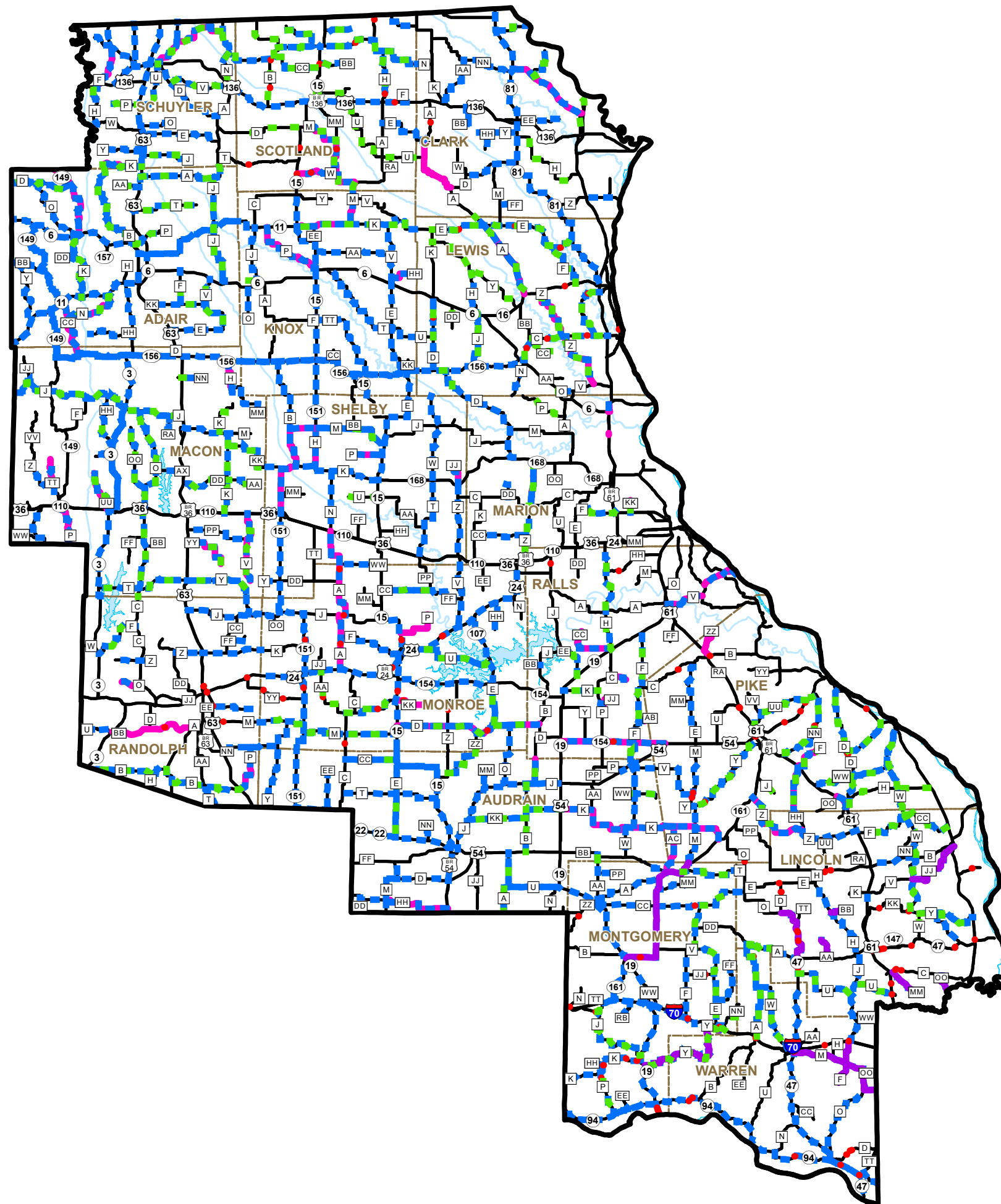
² Includes welcome centers, storm cleanup, social security benefits and insurance for general liability, vehicle liability and workers compensation.

- MoDOT Annually:
- Mows about 400,000 acres
 - Manages over 2,500 traffic signals, 250 dynamic message signs and 600 traffic cameras
 - Stripes over 70,000 line miles
 - Repairs over 15,000 miles of edge ruts
 - Sweeps over 40,000 lane miles
 - Replace over 100,000 linear feet of culvert pipes
 - Flush over 7,000 bridges at least once

Work depicted on this map may change due to winter weather impacts or various impacts such as flooding, disasters or other immediate priorities that may occur or may be identified prior to the implementation of the various work plans.



Maintenance Operations Pavement and Bridge Work Plan Calendar Year 2017 NORTHEAST DISTRICT



- - - Pipe Replacement
- Bridge Deck Sealing
- Chip Seal
- - - Asphalt Pavement Repair
- Pavement Preventative Maintenance
- - - Concrete Pavement Repair
- Crack Sealing
- Motorist Assist Routes
- Urbanized Area
- MPO Area

SFY 2016 Expenditures on all Transportation System Operations

Roadway:	\$16,700,000
Utilities and Tools:	\$11,700,000
Roadside ¹ :	\$5,900,000
Winter:	\$2,000,000
Incident Management:	\$2,700,000
Bridge:	\$2,500,000
Other ² :	\$2,400,000

¹ Includes incidental construction such as signage, striping and edge rut repair.

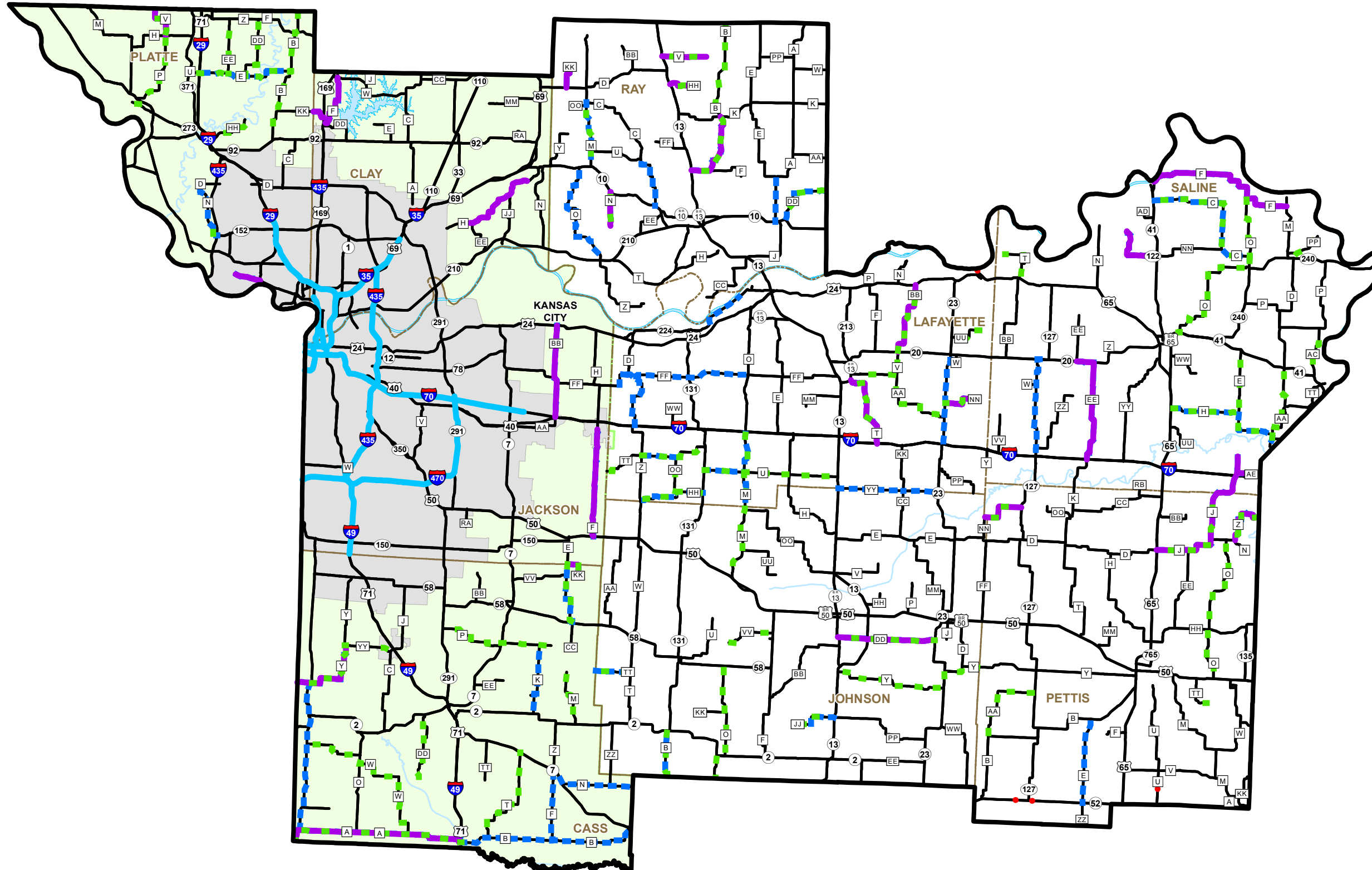
² Includes welcome centers, storm cleanup, social security benefits and insurance for general liability, vehicle liability and workers compensation.

- MoDOT Annually:
- Mows about 400,000 acres
 - Manages over 2,500 traffic signals, 250 dynamic message signs and 600 traffic cameras
 - Stripes over 70,000 line miles
 - Repairs over 15,000 miles of edge ruts
 - Sweeps over 40,000 lane miles
 - Replace over 100,000 linear feet of culvert pipes
 - Flush over 7,000 bridges at least once

Work depicted on this map may change due to winter weather impacts or various impacts such as flooding, disasters or other immediate priorities that may occur or may be identified prior to the implementation of the various work plans.



Maintenance Operations Pavement and Bridge Work Plan Calendar Year 2017 KANSAS CITY DISTRICT



- - - Pipe Replacement
- Bridge Deck Sealing
- Chip Seal
- - - Asphalt Pavement Repair
- Pavement Preventative Maintenance
- - - Concrete Pavement Repair
- Crack Sealing
- Motorist Assist Routes
- Urbanized Area
- MPO Area

SFY 2016 Expenditures on all Transportation System Operations

Roadway:	\$15,200,000
Utilities and Tools:	\$12,100,000
Roadside ¹ :	\$6,800,000
Winter:	\$2,700,000
Incident Management:	\$2,400,000
Bridge:	\$1,300,000
Other ² :	\$2,500,000

¹ Includes incidental construction such as signage, striping and edge rut repair.

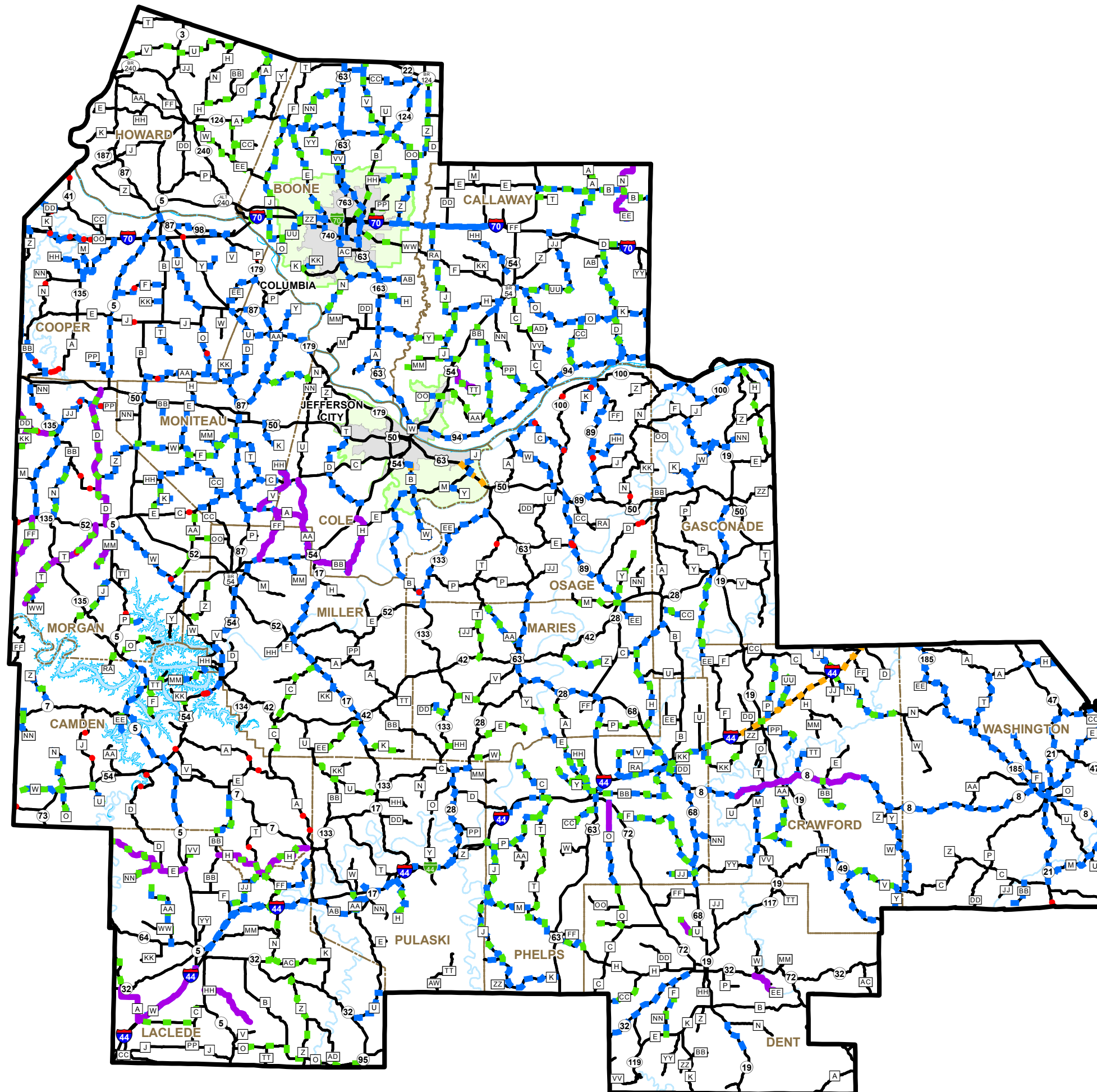
² Includes welcome centers, storm cleanup, social security benefits and insurance for general liability, vehicle liability and workers compensation.

- MoDOT Annually:
- Mows about 400,000 acres
 - Manages over 2,500 traffic signals, 250 dynamic message signs and 600 traffic cameras
 - Stripes over 70,000 line miles
 - Repairs over 15,000 miles of edge ruts
 - Sweeps over 40,000 lane miles
 - Replace over 100,000 linear feet of culvert pipes
 - Flush over 7,000 bridges at least once

Work depicted on this map may change due to winter weather impacts or various impacts such as flooding, disasters or other immediate priorities that may occur or may be identified prior to the implementation of the various work plans.



Maintenance Operations Pavement and Bridge Work Plan Calendar Year 2017 CENTRAL DISTRICT



- Pipe Replacement
- Bridge Deck Sealing
- Chip Seal
- Asphalt Pavement Repair
- Pavement Preventative Maintenance
- Concrete Pavement Repair
- Crack Sealing
- Motorist Assist Routes
- Urbanized Area
- MPO Area

SFY 2016 Expenditures on all Transportation System Operations

Roadway:	\$23,900,000
Utilities and Tools:	\$13,200,000
Roadside ¹ :	\$9,700,000
Winter:	\$4,000,000
Incident Management:	\$2,800,000
Bridge:	\$2,800,000
Other ² :	\$3,200,000

¹ Includes incidental construction such as signage, striping and edge rut repair.

² Includes welcome centers, storm cleanup, social security benefits and insurance for general liability, vehicle liability and workers compensation.

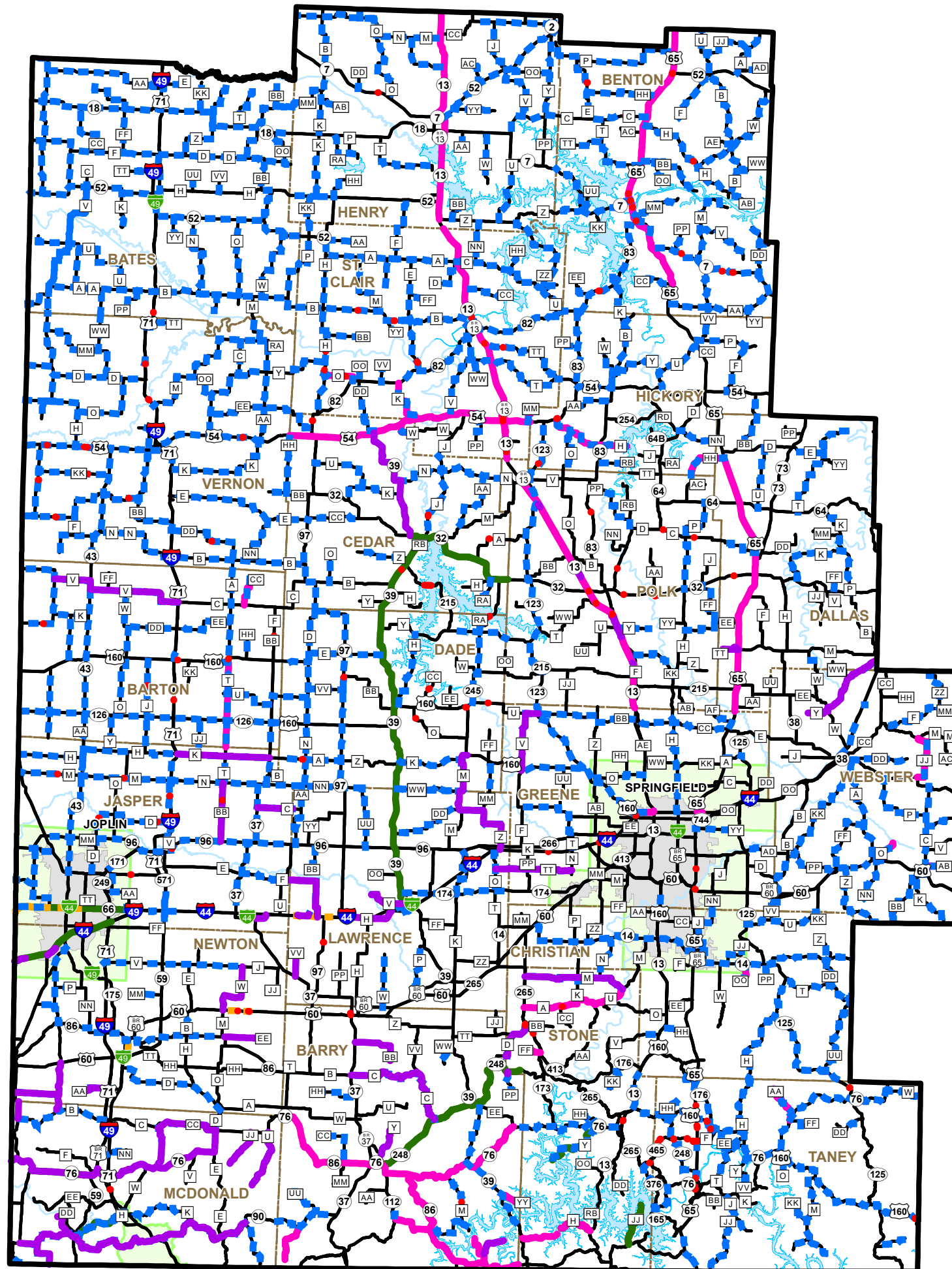
MoDOT Annually:

- Mows about 400,000 acres
- Manages over 2,500 traffic signals, 250 dynamic message signs and 600 traffic cameras
- Stripes over 70,000 line miles
- Repairs over 15,000 miles of edge ruts
- Sweeps over 40,000 lane miles
- Replace over 100,000 linear feet of culvert pipes
- Flush over 7,000 bridges at least once

Work depicted on this map may change due to winter weather impacts or various impacts such as flooding, disasters or other immediate priorities that may occur or may be identified prior to the implementation of the various work plans.



Maintenance Operations Pavement and Bridge Work Plan Calendar Year 2017 SOUTHWEST DISTRICT



- Pipe Replacement
- Bridge Deck Sealing
- Chip Seal
- Asphalt Pavement Repair
- Pavement Preventative Maintenance
- Concrete Pavement Repair
- Crack Sealing
- Motorist Assist Routes
- Urbanized Area
- MPO Area

SFY 2016 Expenditures on all Transportation System Operations

Roadway:	\$28,900,000
Utilities and Tools:	\$13,200,000
Roadside ¹ :	\$15,400,000
Winter:	\$3,500,000
Incident Management:	\$4,000,000
Bridge:	\$3,300,000
Other ² :	\$4,000,000

¹ Includes incidental construction such as signage, striping and edge rut repair.

² Includes welcome centers, storm cleanup, social security benefits and insurance for general liability, vehicle liability and workers compensation.

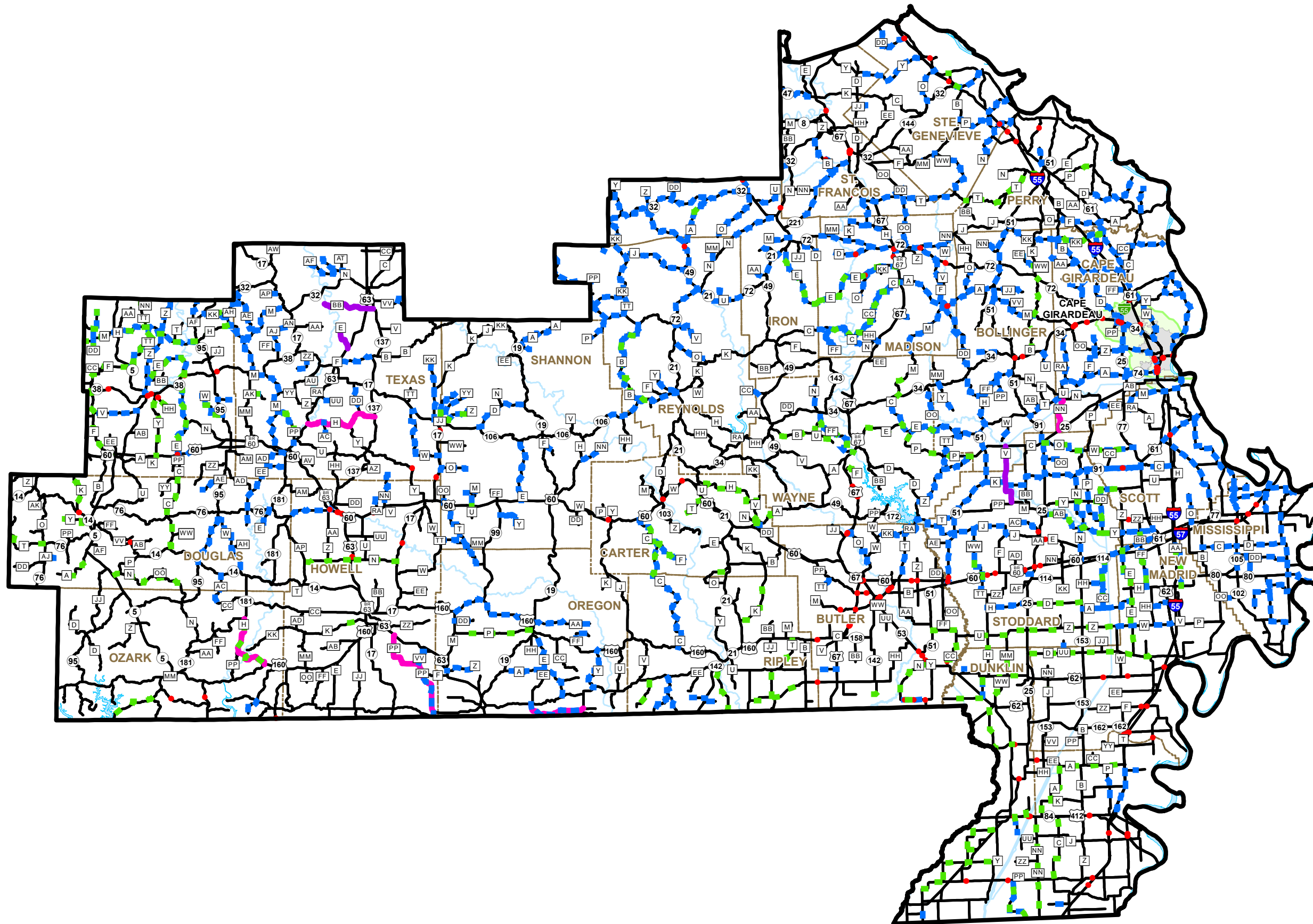
MoDOT Annually:

- Mows about 400,000 acres
- Manages over 2,500 traffic signals, 250 dynamic message signs and 600 traffic cameras
- Stripes over 70,000 line miles
- Repairs over 15,000 miles of edge ruts
- Sweeps over 40,000 lane miles
- Replace over 100,000 linear feet of culvert pipes
- Flush over 7,000 bridges at least once

Work depicted on this map may change due to winter weather impacts or various impacts such as flooding, disasters or other immediate priorities that may occur or may be identified prior to the implementation of the various work plans.



Maintenance Operations Pavement and Bridge Work Plan Calendar Year 2017 SOUTHEAST DISTRICT



- Pipe Replacement
- Bridge Deck Sealing
- Chip Seal
- Asphalt Pavement Repair
- Pavement Preventative Maintenance
- Concrete Pavement Repair
- Crack Sealing
- Motorist Assist Routes
- Urbanized Area
- MPO Area

SFY 2016 Expenditures on all Transportation System Operations

Roadway:	\$29,700,000
Utilities and Tools:	\$15,400,000
Roadside ¹ :	\$11,100,000
Winter:	\$2,900,000
Incident Management:	\$1,800,000
Bridge:	\$3,000,000
Other ² :	\$3,700,000

¹ Includes incidental construction such as signage, striping and edge rut repair.

² Includes welcome centers, storm cleanup, social security benefits and insurance for general liability, vehicle liability and workers compensation.

MoDOT Annually:

- Mows about 400,000 acres
- Manages over 2,500 traffic signals, 250 dynamic message signs and 600 traffic cameras
- Stripes over 70,000 line miles
- Repairs over 15,000 miles of edge ruts
- Sweeps over 40,000 lane miles
- Replace over 100,000 linear feet of culvert pipes
- Flush over 7,000 bridges at least once

Work depicted on this map may change due to winter weather impacts or various impacts such as flooding, disasters or other immediate priorities that may occur or may be identified prior to the implementation of the various work plans.

