

Butler County Railroad Overpass

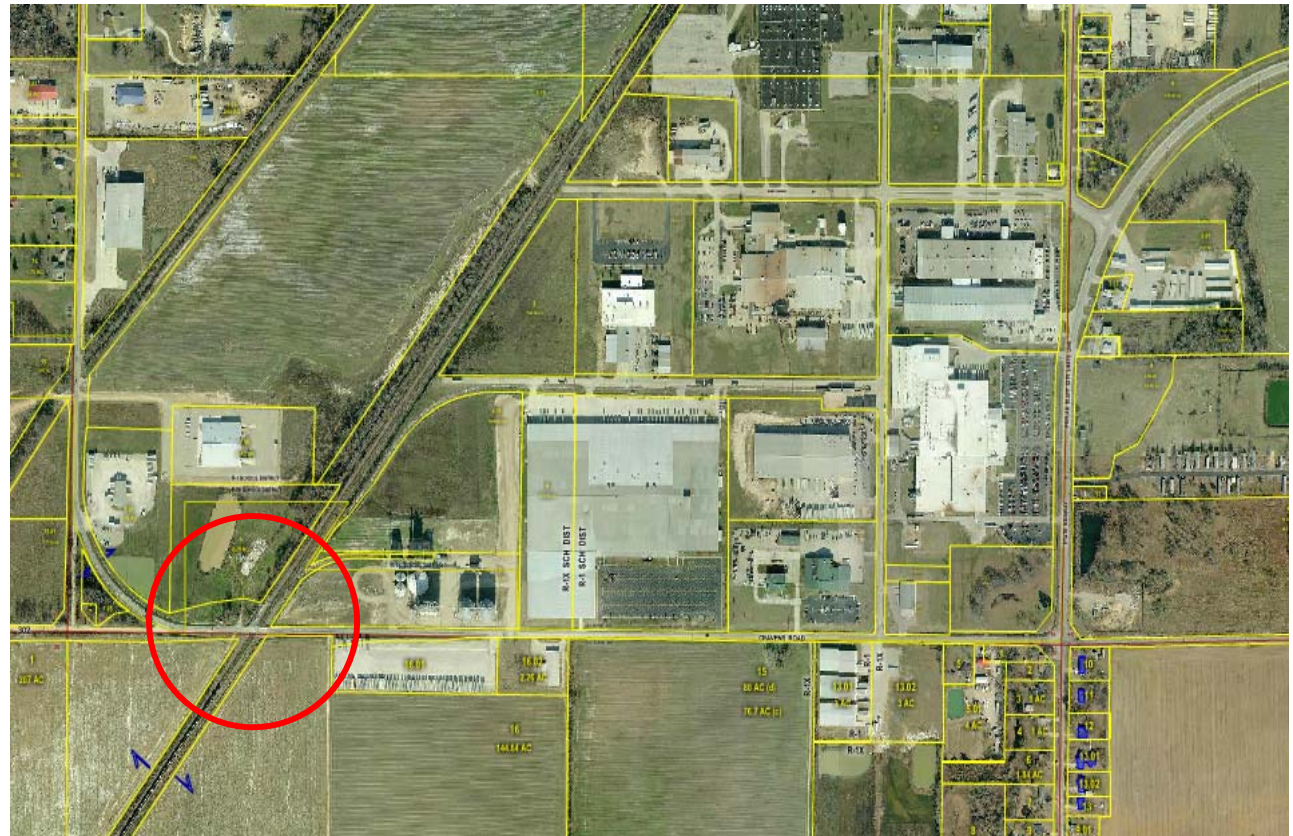


Pulling Partners Together

The Challenge

☞ Active Railroad Crossing and Busy Roadway Intersect at Primary Entrance to the Poplar Bluff Industrial Park

- Safety Hazard to Motorists
- Primary Entrance to Industrial Park
- Delays in Transporting Goods
- Delays in Accessing Employment



The Solution

- Construct a Railroad Overpass at the Intersection and Eliminate the Railroad Crossing



\$4,236,227

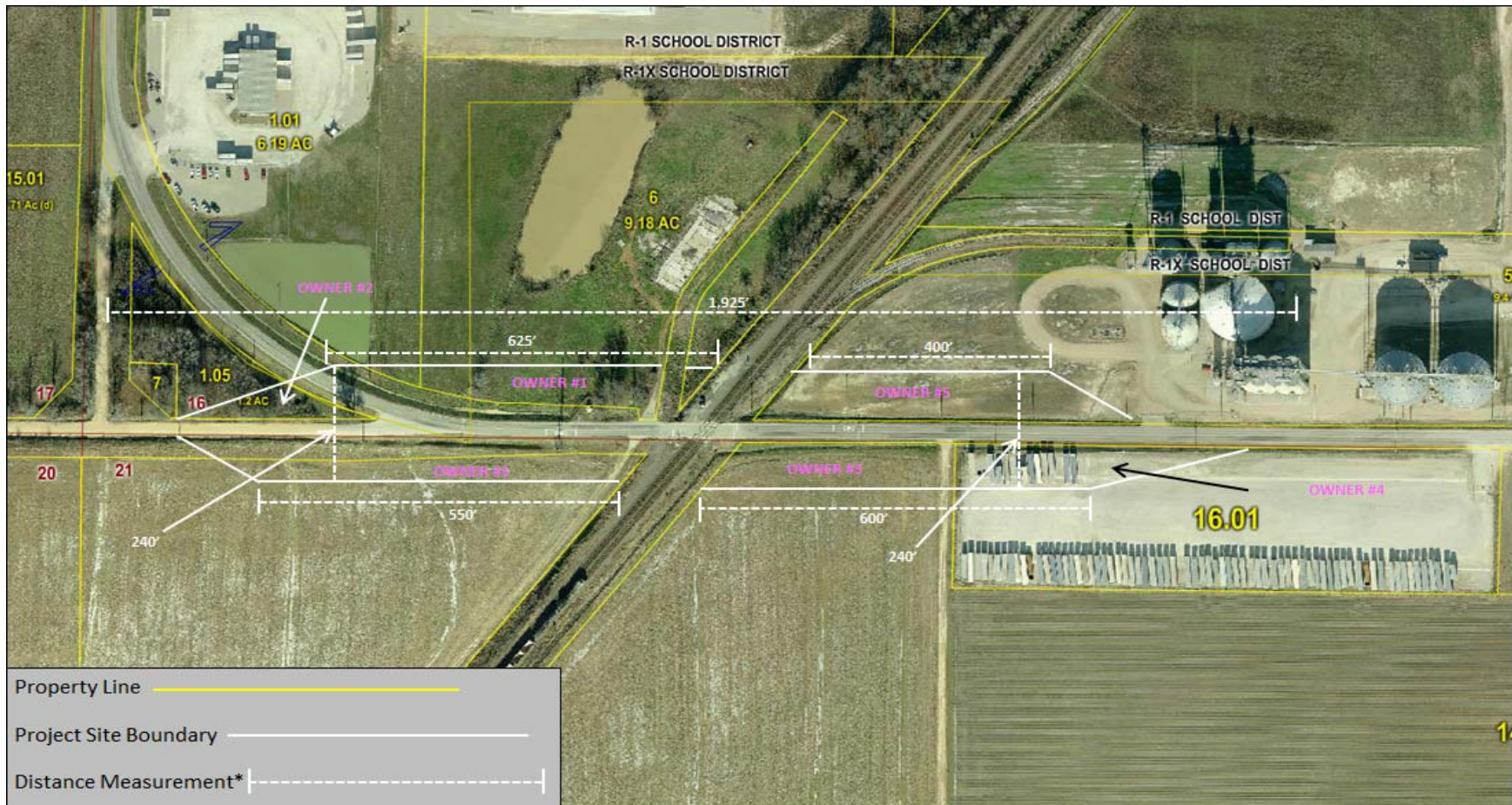


Getting Started

- ☞ Private Enterprise Expansion Creating 70 Jobs
- ☞ Commitment from County Government to Sponsor Proposals
- ☞ Strong Support from Local Chamber of Commerce
- ☞ Engagement with Union Pacific Railroad
- ☞ Preliminary Cost Estimate

Hurdles

- Property Acquisition (5 property owners involved)



Hurdles (cont.)

- ∞ Inaccurate project cost estimate
- ∞ Conflicting personalities
- ∞ Varying funding agency regulations
- ∞ Natural disasters
- ∞ Public/Private timelines
- ∞ Lack of local cash

Resources

Project Funds Committed	
CDBG	\$1,420,000.00
DRA (MO-50047)	\$106,149.00
EDA	\$1,018,633.00
Riceland	\$383,000.00
Union Pacific Railroad	\$413,504.00
County Cash	\$9,525.00
MoDOT Funding	\$539,700.94
Original County In-Kind	\$33,221.00
Ozark Border/UP Easement Fee Waiver	\$10,000.00
Total Funding Currently Available =	\$3,933,732.94

Suggestions

- ☞ Ownership by the Local Public Agency
- ☞ Engage local chamber of commerce/economic development agencies
- ☞ Select a consultant familiar with railroad regulations & protocol
- ☞ RPC staff to function as liaison between agencies
- ☞ Conduct face-to-face meetings with all parties initially
- ☞ Follow up all telephone conversations with group email
- ☞ Have cost estimate reviewed by a third party

Contact Information

Felicity Ray
Executive Director
Ozark Foothills RPC
felicity@ofrpc.org



Improving the Quality of Life in Butler, Carter, Reynolds, Ripley & Wayne Counties