



# MoDOT Southwest District Planning Framework Prioritization Process

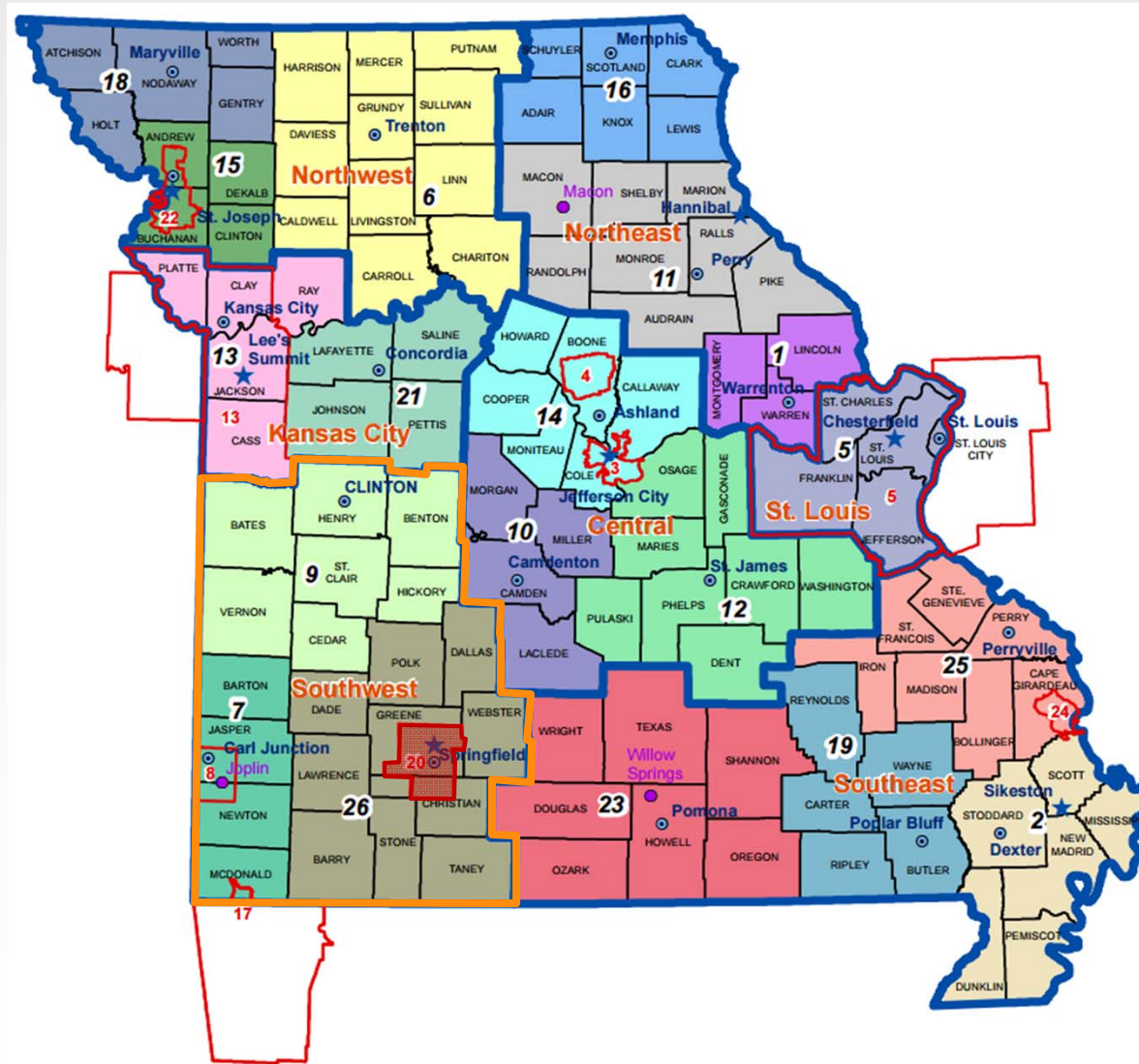
Frank Miller, Southwest District Planning Manager

[Frank.Miller@modot.mo.gov](mailto:Frank.Miller@modot.mo.gov)

Statewide Planning Partner Meeting

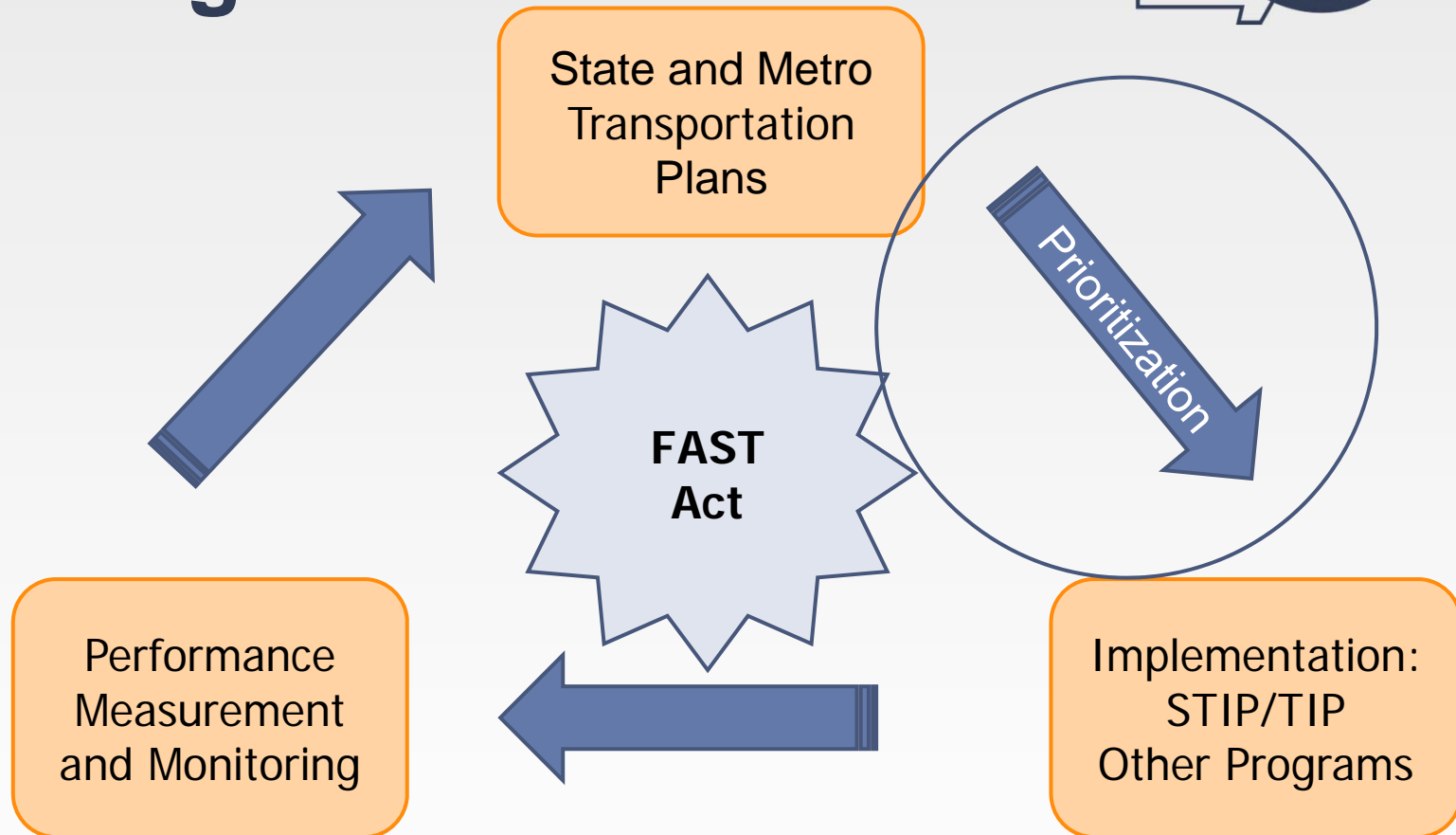
February 8, 2018

# Planning Partners



MPOs  
MPO – TMAs  
RPCs

# General Transportation Planning Process



# Identifying and Prioritizing Projects



## Asset Management Plan

Pavements  
Bridges  
ADA  
System Operations

## Safety Plan

Based on Blueprint for Safety  
Data-driven (crash rates trends)  
Utilizes funding specific to safety

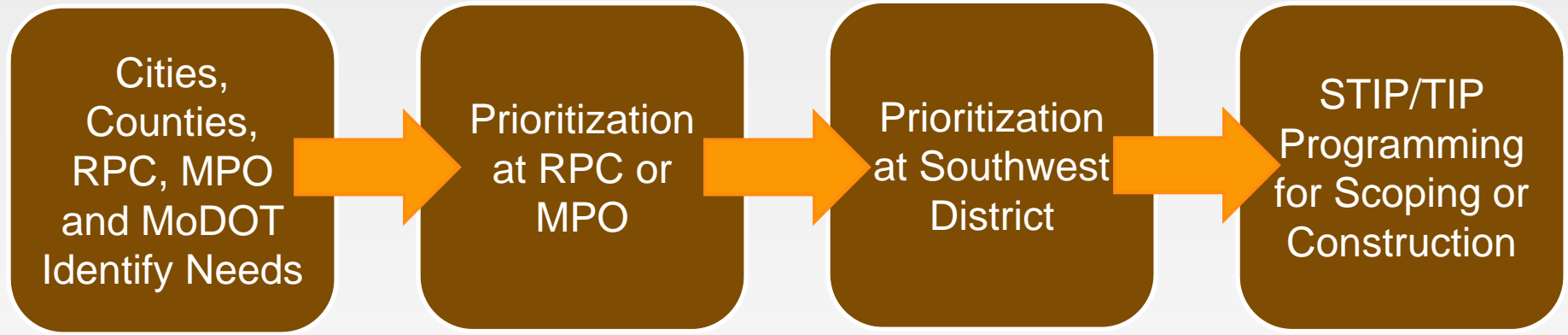
## District Planning Framework

Regional Projects  
Congestion, Economic Development  
Cost Sharing

# Project Selection and Prioritization



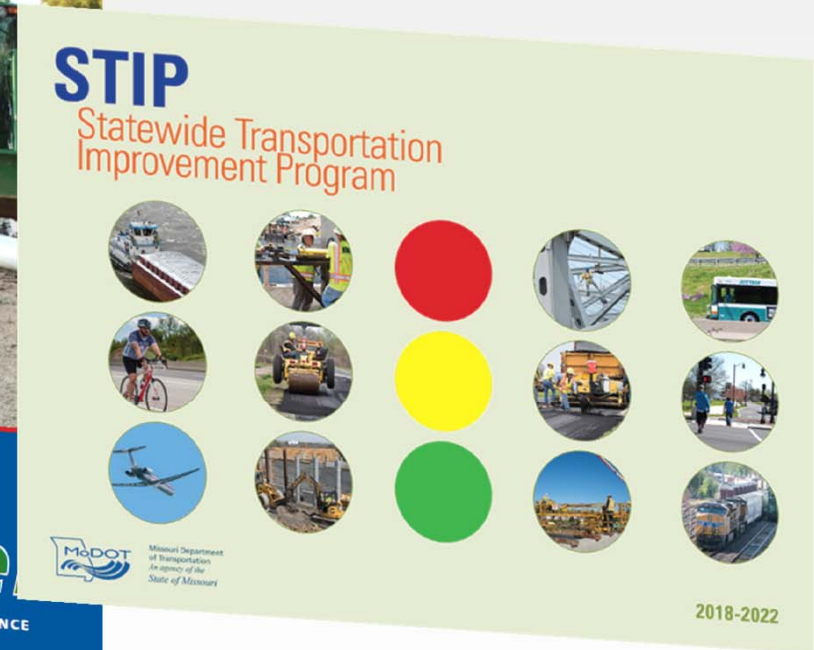
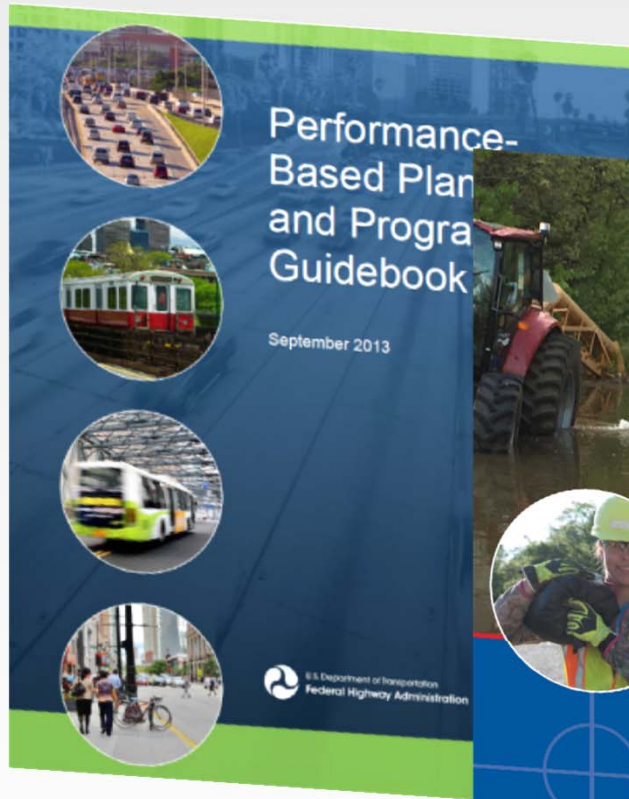
## Southwest "Rural"



## Southwest "Urban"

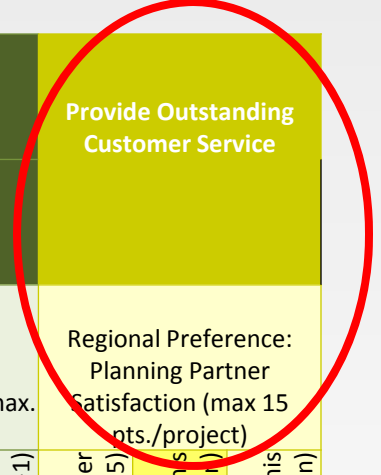


# Performance- Based Planning and Programming





<b>Keep Customers and Ourselves Safe</b>				<b>Operate a Reliable and Convenient Transportation System</b>				<b>Advance Economic Development</b>				<b>Provide Outstanding Customer Service</b>			
<i>Long-Range Plan Goal: Safety</i>				<i>Long-Range Plan Goal: Connection and Choices</i>				<i>Long-range Plan Goal: Economic Development</i>							
Number and rate of fatalities and serious injuries (max. 10 points)				Cost and Impact of Traffic Congestion (max. 5 points)				National Ranking of Transportation Infrastructure; Truck Reliability Index (max. 5 points)				Regional Preference: Planning Partner Satisfaction (max 15 pts./project)			
Improves run-off-road crashes, not in a curve (+2)				Improves capacity on Route >10,000 AADT (+1)				Improves a Tier 1 freight corridor (+2)				Distribute 200 points on projects: 0 - 15 points per project (in increments of 5)			
Improves run-off-road crashes, in a curve (+2)				Improves capacity on Route > 5,000 AADT (+1)				Improves a Tier 2 or Tier 3 freight corridor (+1)				Maximum 100 points in your region (score in this column)			
Reduce collisions with roadside objects (+2)				Improves capacity on a Route > 2,500 (+1)				Improves access to an industrial park, downtown, business park or tourist attraction (+1)				Remaining points outside your region (score in this column)			
Reduce head-on collisions (+2)				Improves capacity on a Principal Arterial (+2)				Addresses a structurally or functionally deficient bridge (+1)							
Improve intersection safety (signalized and unsignalized) (+2)				Improves capacity on a Minor Arterial (+1)				Addresses a highway/railroad grade separation (+1)							



# FY19-23 STIP Process



- April 2017: 2019-2023 internal kickoff meeting
- Spring 2017: updates to safety plan
- Summer 2017: updates to resurfacing, bridge plans  
planning partner prioritization updates
- Fall 2017: planning partner prioritization  
district prioritization  
project estimate updates  
Asset Management Plan update
- Winter 2018: programming new projects  
updates to existing projects continue



# FY19-23 STIP Process



September 25<sup>th</sup> Prioritization Meeting for Performance Measures

Keep Our Customers Safe

20 points maximum possible/need

Reliable and Convenient System

Highest scores:18

Economic Development

October 27<sup>th</sup> Planning Workshop

Customer Service

(Planning Partner input)

15 points maximum possible/need



# Which priorities move forward?



Available funds and types of funds

Pavement Plans, Safety Plan, Bridge Plan, ADA Plan

Project timing, coordination with other projects

Funding from other sources (Cost Share, Cities, Earmarks)

Statewide direction (Asset Management Plan)

Geographic balance, etc.