

# MoDOT Data Resources – Questions and Answers

Statewide Planning Partner Meeting, Feb. 8, 2018

## 1. Where do I find VMT for my area?

VMT (Vehicle Miles Traveled) is available in the TMS (Transportation Management System) Data Zone <http://datazone.modot.org/>.



Click on the Traffic icon. Then click on the Data Summary Tool. You will see one report listed for “All Systems” VMT and another for “State System” VMT. The “All Systems” VMT report displays VMT by planning org by functional class but can easily be modified to add other columns.

Page 1 of 2 (27 items) 1 2

	1_INTERSTATE	2_FREEWAY	3_PRINCIPAL ARTERIAL	4_MINOR ARTERIAL	5_MAJOR COLLECTOR	6_MINOR COLLECTOR	7_LOCAL	Sum
BOONSLICK REG PLAN COMM	1,414,785	562,295		716,701	486,777	49,948	929,952	4,160,458
BOOTHEEL REG PLAN & ECON DEV	2,095,099	569,837	289,002	866,558	1,283,245	69,220	1,349,582	6,522,543
CAMPO MPO		1,058,254	74,463	436,150	231,732	10,020	293,071	2,103,690
CATSO MPO	786,949	558,514	423,137	654,952	340,646	26,403	557,368	3,347,969
EWGCC MPO	24,772,286	4,684,250	9,195,268	6,340,450	5,571,701	277,647	12,984,073	63,825,675
GREEN HILLS REG PLAN COMM	724,281	684,566	697,205	363,391	626,488	102,012	811,495	4,009,438
HARRY S. TRUMAN COORD COUN	1,517,720	48,460	374,216	651,234	693,478	33,769	1,112,191	4,431,068

Commercial VMT can be found by dragging the “COMMERCIAL VMT” column from the Filter Area to the Data Area.

**Filter Area**

- RAMP\_LANEMILES
- CENTERLINE
- LANE\_MILES
- NUMBER\_OF\_LANES
- COMMERCIAL\_VMT

**Column Area**

FUNCTIONAL\_CLASS

**Row Area**

PLANNING\_ORG

**Data Area**

VMT

See COMMERCIAL\_VMT in the Data Area below.

**Filter Area**

- YEAR
- DISTRICT\_ABBR
- COUNTY\_NAME
- STATE\_SYSTEM\_CLASS
- NHS

**Column Area**

FUNCTIONAL\_CLASS

**Row Area**

PLANNING\_ORG

**Data Area**

VMT

COMMERCIAL\_VMT

## Results:

Page 1 of 2 (27 items) 1 2

	1_INTERSTATE		2_FREEWAY		3_PRINCIPAL ARTERIAL		4_MINOR ARTERIAL		5_MAJOR COLLECTOR		6_MI
	VMT	COMMERCIAL_VMT	VMT	COMMERCIAL_VMT	VMT	COMMERCIAL_VMT	VMT	COMMERCIAL_VMT	VMT	COMMERCIAL_VMT	VMT
BOONSLICK REG PLAN COMM	1,414,785	524,483	562,295	124,631			716,701	67,478	486,777	42,851	49,948
BOOTHEEL REG PLAN & ECON DEV	2,095,099	939,540	569,837	121,852	289,002	39,672	866,558	96,751	1,283,245	158,324	69,220
CAMPO MPO			1,058,254	106,163	74,463	3,696	436,150	20,057	231,732	12,313	10,020
CATSO MPO	786,949	200,587	558,514	48,408	423,137	24,302	654,952	31,564	340,646	17,263	26,403
EWGCC MPO	24,772,286	3,769,290	4,684,250	302,167	9,195,268	556,804	6,340,450	331,989	5,571,701	299,760	277,647

# MoDOT Data Resources – Questions and Answers

Statewide Planning Partner Meeting, Feb. 8, 2018

2. Where do I find pavements/bridges in good/not good condition?

Pavement conditions can be found in the TMS Data Zone.



Click on the Planning icon. Then click on the Data Summary Tool. Select the “Pavement Tracker” report. The default display for this report indicates state system directional miles by MoDOT district. The report can easily be modified to display by planning org by replacing DISTRICT\_ABBR in the Row area with PLANNING\_ORG.

Page 1 of 2 (27 items) 1 2

	1_MAJOR		1_MAJOR Total	2_MINOR		2_MINOR Total	3_LOWVOL		3_LOWVOL Total	Sum
	GOOD	NOT GOOD		GOOD	NOT GOOD		GOOD	NOT GOOD		
BOONSLICK REG PLAN COMM	122	5	127	474	116	590	162	27	189	906
BOOTHEEL REG PLAN & ECON DEV	382	32	414	1,008	174	1,182	290	186	475	2,072
CAMPO MPO	83	11	94	60	13	74	0	1	1	169
CATSO MPO	85	8	93	54	37	91	3	2	5	188
EWGCC MPO	982	144	1,126	741	275	1,016	39	34	74	2,216
GREEN HILLS REG PLAN COMM	439	84	523	545	226	772	1,039	837	1,876	3,170
HARRY S. TRUMAN COORD COUN	226	5	231	601	138	739	188	25	213	1,184

Bridges in poor condition are not yet in the TMS Data Zone. They have been posted on the [MoDOT partner collaboration website](#).

3. How do you calculate a weighted average for combined AADT segments in TMS?  
The formula for calculating a weighted AADT is as follows:

$$\text{Weighted AADT} = \frac{\text{AADT of Segment 1}(\text{Length of Segment 1}) + \text{AADT of Segment 2}(\text{Length of Segment 2}) + \text{AADT of Segment n}(\text{Length of Segment n})}{\text{Length of Segment 1} + \text{Length of Segment 2} + \text{Length of Segment n}}$$

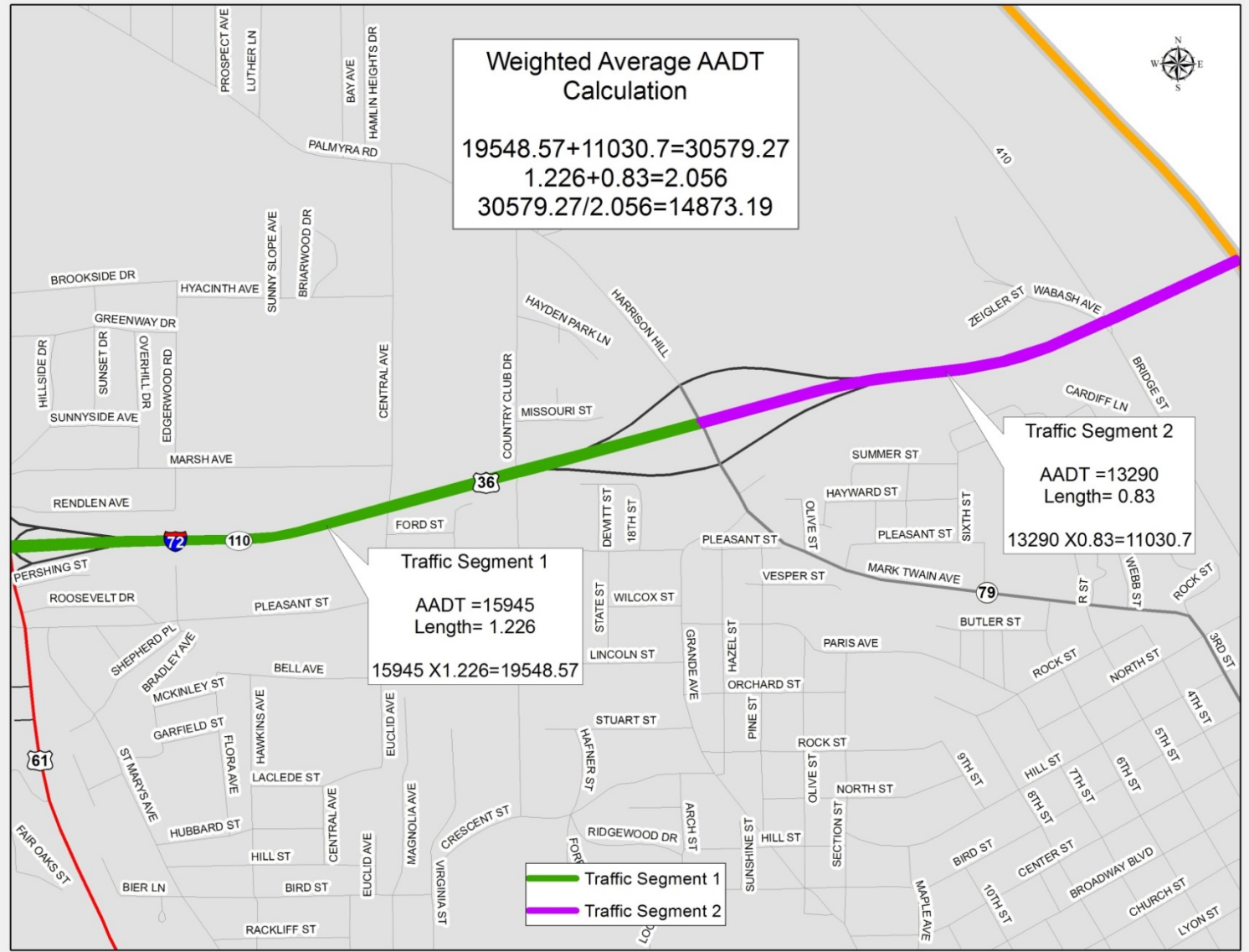
Example:

$$\left[ \frac{\text{AADT1}}{\text{Length1}} \right] + \left[ \frac{\text{AADT2}}{\text{Length2}} \right] + \left[ \frac{\text{AADTn}}{\text{Lengthn}} \right]$$

$$\left[ \frac{(15945 \times 1.226) = 19548.57}{1.226} \right] + \left[ \frac{(13290 \times 0.83) = 11030.7}{0.83} \right] = \frac{30579.27}{2.056} = \mathbf{14873.19}$$

# MoDOT Data Resources – Questions and Answers

Statewide Planning Partner Meeting, Feb. 8, 2018



4. When is crash data updated and how will we know when revisions are made?

Crash data is updated daily as the Missouri State Highway Patrol (MSHP) clerks enter reports directly into TMS. Crash numbers on the Crash Statistics Map in the TMS Data Zone <http://datazone.modot.org/> will change daily for the current year. The Crash Statistics Map can be

found by clicking on the TMS Data Zone  on the TMS Homepage.

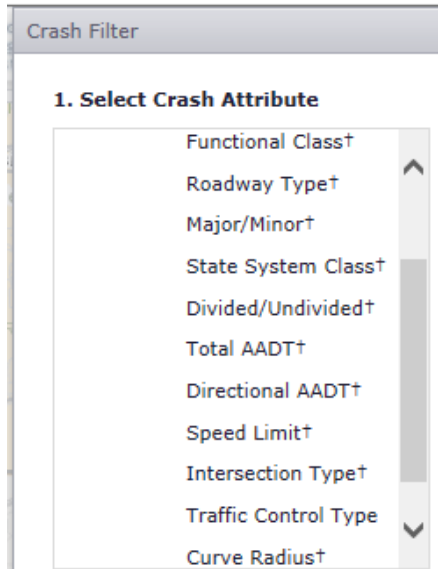
Then click on the Crash Statistics Map icon  under the Safety icon. Finalizing year end crash data is a slow process and there is no automatic trigger to know when it happens. Some local agencies hold their reports until the end of the year instead of submitting them monthly. MSHP notifies MoDOT when they have closed out a year. MoDOT will notify MPOs and RPCs when a year is finalized.

# MoDOT Data Resources – Questions and Answers

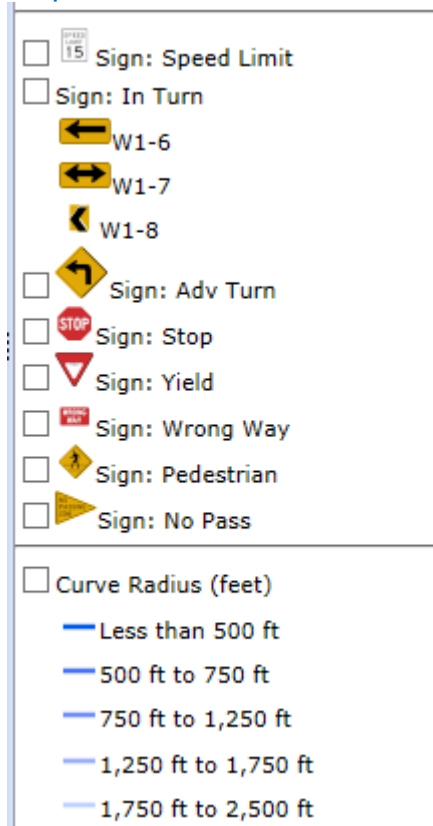
Statewide Planning Partner Meeting, Feb. 8, 2018

5. Are there other roadway geometrics available such as volume, speed, light, signage, etc. for crashes?

The Crash Statistics Map in the TMS Data Zone contains a filter option for the following roadway attributes:



The Crash Statistics Map also has sign and curve data available for display on the main page of the map.

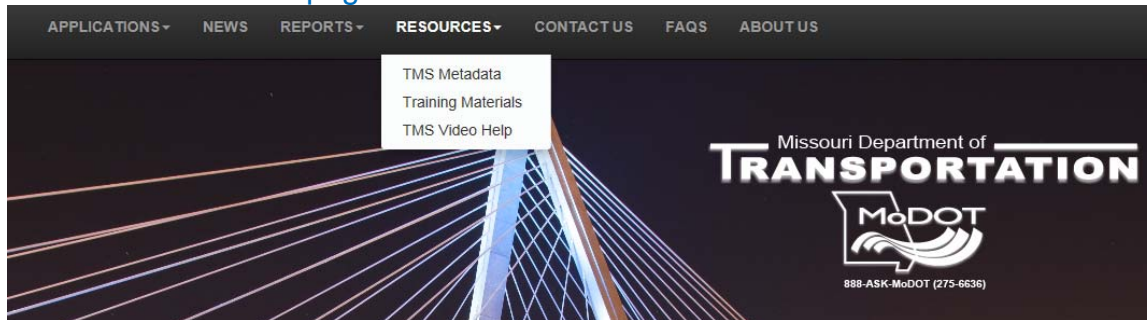


# MoDOT Data Resources – Questions and Answers

Statewide Planning Partner Meeting, Feb. 8, 2018

6. Where can I find table and column names (metadata) in TMS?

From the TMS Homepage click on “Resources” then “TMS Metadata”



This will take you to a Sharepoint site with folders listed for the major business areas of TMS.

RIGHT OF WAY	4/6/2011 1:14 PM	Jeannemarie Lebeau
ROUTINE MAINTENANCE	3/3/2011 1:55 PM	Jeannemarie Lebeau
SAFETY	5/27/2010 7:25 AM	Jeannemarie Lebeau
SIMS	5/11/2010 12:59 PM	Jeannemarie Lebeau

Click on desired folder, select views or tables to see individual listings.

Type	Name	Modified	Modified By
	ACC_DRIVER_CIRCM	2/6/2017 10:49 AM	Yvonne Wilbers
	ACC_DRIVER_COND	2/6/2017 10:55 AM	Yvonne Wilbers
	ACC_PEDESTRIAN	2/8/2017 12:48 PM	Yvonne Wilbers
	ACC_SVRTY_RATING	2/6/2017 11:14 AM	Yvonne Wilbers
	ACC_VEH_TWF_TYP	2/6/2017 11:16 AM	Yvonne Wilbers
	ACC_VEHICLE_ACTION	2/6/2017 11:16 AM	Yvonne Wilbers
	ACCDVR_VIS_OBSRTY	2/6/2017 11:18 AM	Yvonne Wilbers
	ACCIDENT	2/6/2017 11:24 AM	Yvonne Wilbers

Click on table name to view table definition and column descriptions.

## ACCIDENT

### Description

This table contains information about crashes. A crash is an event involving possible property damage, injury or loss of life.

**NOTE:** This table contains information that is protected from disclosure by federal law, 23 USC Section 409 and the Missouri Open Records Law (Sunshine Act), Section 610.021 RSMo. Please review MoDOT's policy and procedure manual on the Sunshine Act before releasing any of the information contained herein.

### NAME

### DESCRIPTION

ACC_MASTER_INTRCHG	Identifies the location of a crash within an interchange. <a href="#">Click here for codes</a>
ACC_MASTER_INTRSC	Describes the type of intersection/interchange when a crash occurs. <a href="#">Click here for codes</a>
ACC_MSHP_IMAGE_NO	A unique number assigned to each crash report by the Missouri State Highway Patrol (MSHP).

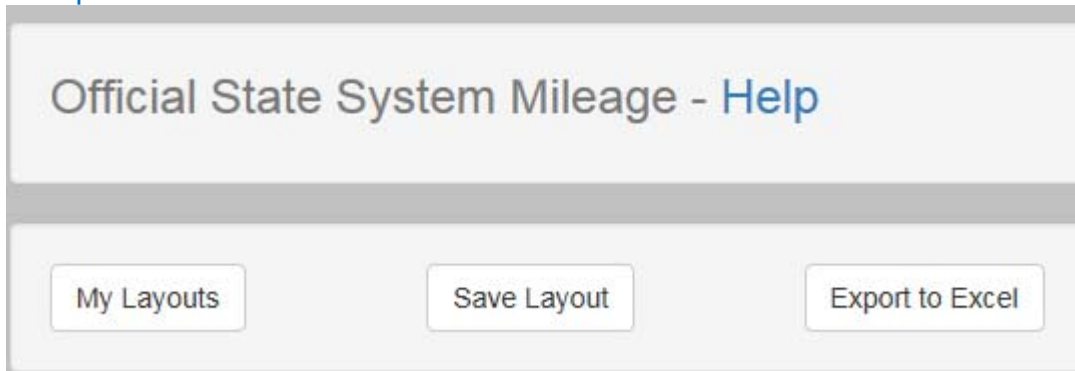
# MoDOT Data Resources – Questions and Answers

Statewide Planning Partner Meeting, Feb. 8, 2018

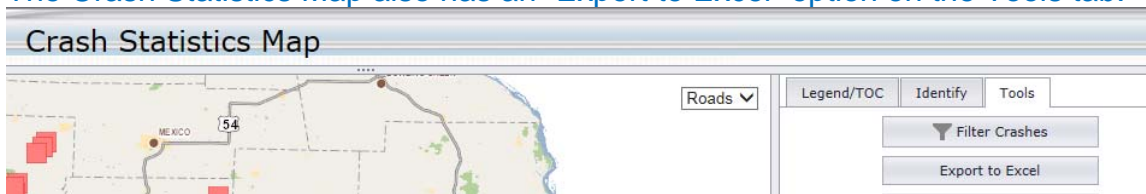
7. Can I export files from the TMS Data Zone?



Yes. The pre-defined grids in the Data Summary Tool (example below) all have an option to export results to excel.



The Crash Statistics Map also has an “Export to Excel” option on the Tools tab.



Results will display as follows:

County	Travelway Log	Crash Clas	Date	Severity	R Image Nui	Intersecti	Light Conc	Road Surf	Weather	Travelway	Day Of Wk	Time	Prop Dr
COLE	US 50 W	116.513	REAR END	2/25/2017 0:00	FATAL	217000983	0	DAYLIGHT DRY	CLEAR	3508	SAT	815	
COLE	CST EASTL	1.1	LEFT TURN	5/26/2017 0:00	FATAL	217003043	310681	DARK W/ : DRY	CLOUDY	970617	FRI	512	
COLE	RT M E	1.966	OUT OF CC	1/9/2017 0:00	FATAL	317000262	0	DARK W/ : DRY	FREEZING	7083	MON	630	OTHER
COLE	CST CLARK	0.172	OUT OF CC	4/20/2017 0:00	FATAL	217001935	0	DARK W/ : DRY	CLEAR	970420	THU	2333	

8. How do I download data or send data from the TMS Data Zone to my personal computer?

[Instructions for Accessing or saving to your local drives in vWorkspace](#) are located on the [MoDOT partner collaboration website](#).

9. Who do I contact if TMS is incredibly slow, kicks me out or is crashing?

You can start by checking with your IT staff to ensure your network is performing properly. If that checks out then call the TMS HelpDesk at (573)526-8055 or (573)522-8464 to start the trouble-shooting process. The TMS Helpdesk can be reached by email at [yvonne.wilbers@modot.mo.gov](mailto:yvonne.wilbers@modot.mo.gov) or [jeannemarie.lebeau@modot.mo.gov](mailto:jeannemarie.lebeau@modot.mo.gov).

10. Who do I contact if I have trouble accessing or using TMS data?

Contact the TMS HelpDesk at (573)526-8055 or (573)522-8464. The TMS Helpdesk can be reached by email at [yvonne.wilbers@modot.mo.gov](mailto:yvonne.wilbers@modot.mo.gov) or [jeannemarie.lebeau@modot.mo.gov](mailto:jeannemarie.lebeau@modot.mo.gov).