



Leveraging MoDOT Data Resources

Myrna Tucker, MoDOT TMS Administrator

Myrna.tucker@modot.mo.gov

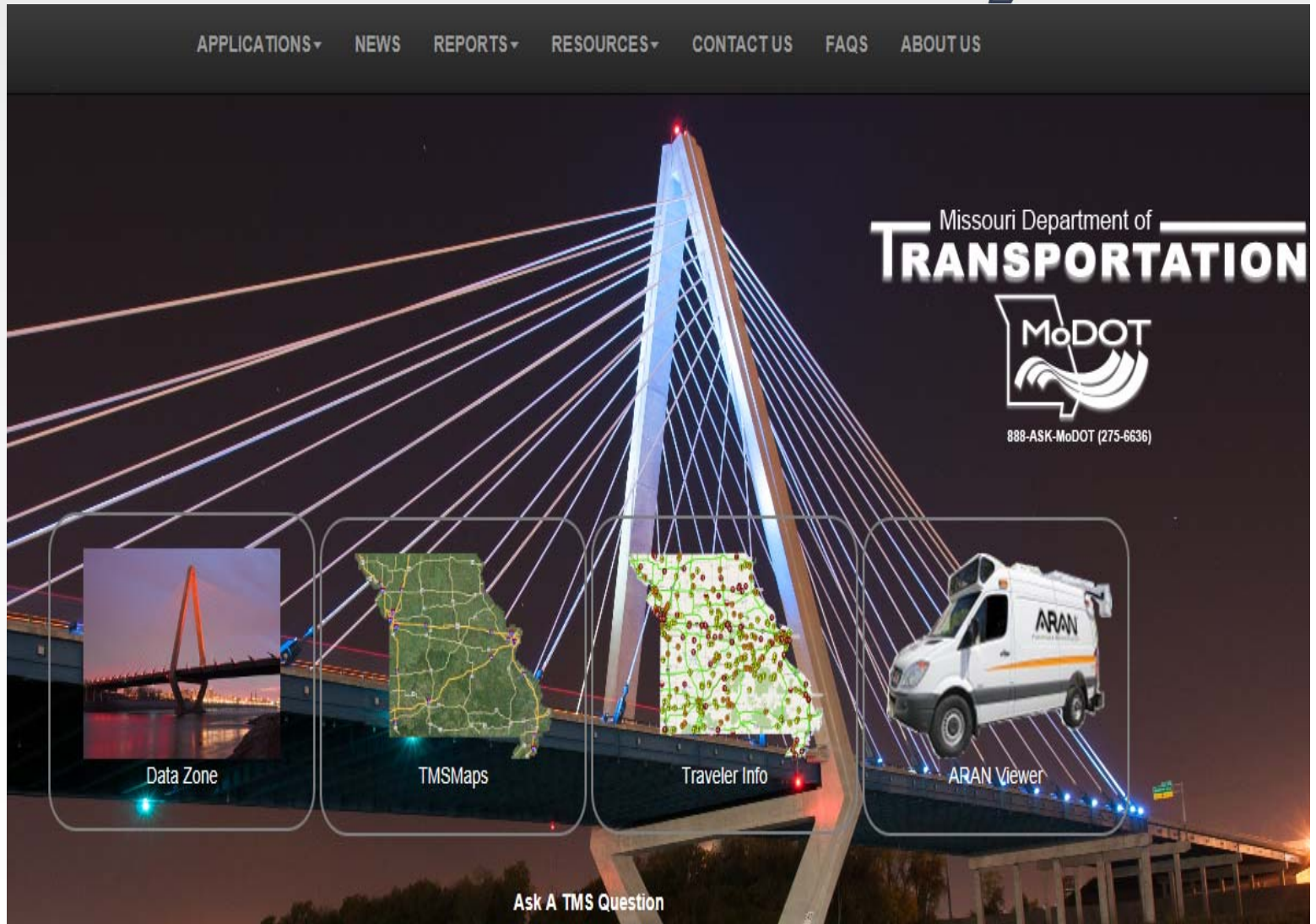
Statewide Planning Partner Meeting

February 8, 2018

MoDOT's #1 Data Resource: TMS:Transportation Management System



- Applications
- Reports
- Mapping Tools
- Metadata



TMS has grown.....

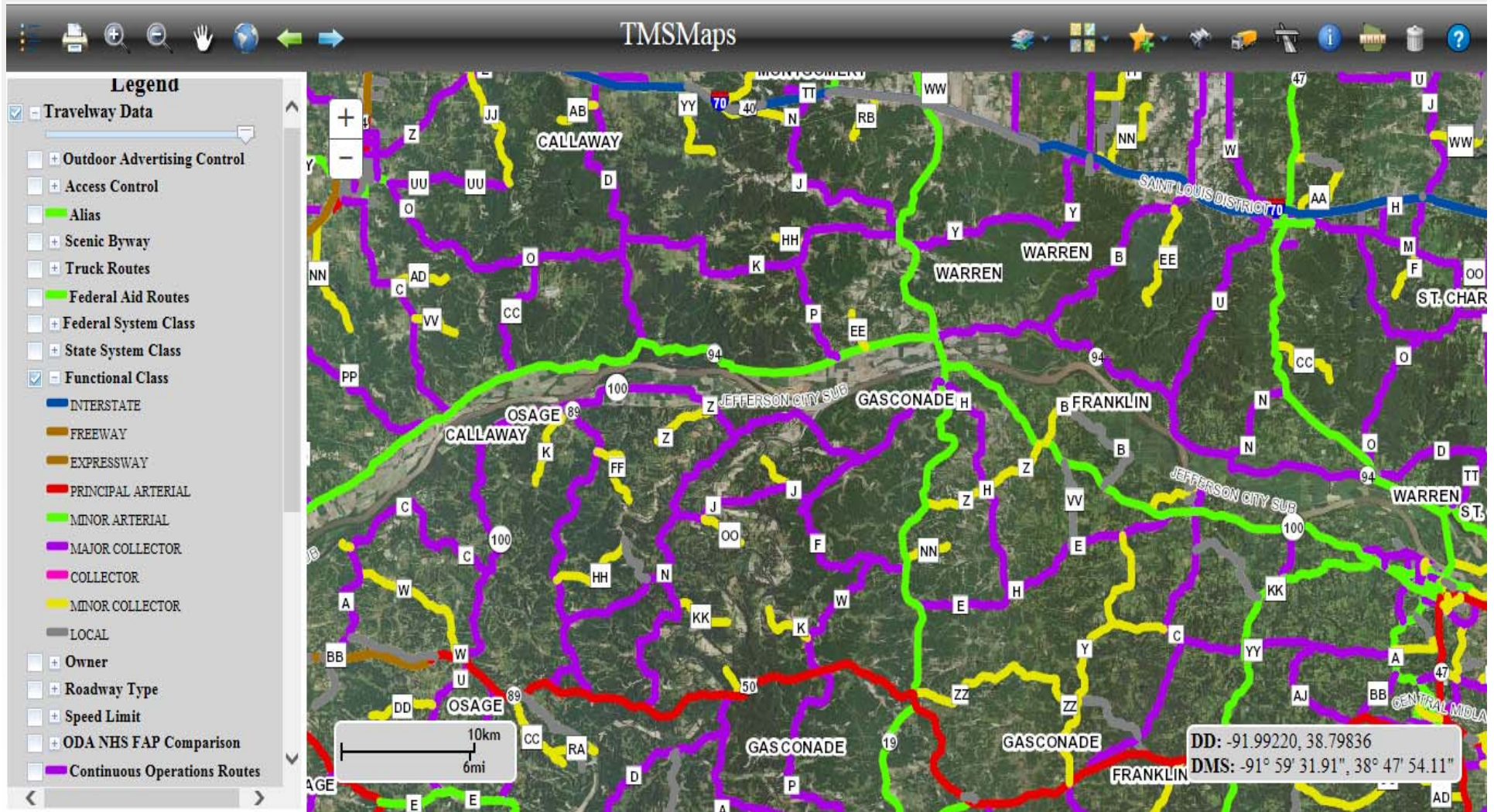


The screenshot displays the MoDOT website's navigation bar and a dropdown menu for "APPLICATIONS". The navigation bar includes links for "APPLICATIONS", "NEWS", "REPORTS", "RESOURCES", "CONTACT US", "FAQS", and "ABOUT US". The "APPLICATIONS" dropdown menu lists the following items:

- Adopt A Highway
- Bridge Management System
- Client Server Applications
- Code Tables
- Outdoor Advertising
- Pavement Management System
- Right of Way
- Safety Management System
- Stormwater
- Traffic Management System
- Traveler Information System
- Travelway Features
- Travelways Management System
- Emergency Operations Map
- Intelligent Transportation System
- Inventory Validation
- Railroad Management System
- Routine Maintenance
- STIP Management System
- State of the System
- Striping Inventory System

The main content area features a large image of a cable-stayed bridge at night. Overlaid on this image are three interactive map components: "Data" (a small inset map), "Maps" (a larger map of Missouri with a network overlay), and "Traveler Info" (a map showing a network of travel routes). To the right of these maps is an "ARAN Viewer" featuring a white van with "ARAN" written on its side. The MoDOT logo and the text "Missouri Department of Transportation" are prominently displayed in the upper right of the main content area. Below the maps, there is a link that says "Ask A TMS Question". At the bottom of the page, the text "Department of Transportation 2016" and "TMS Messag" are visible.

TMS Maps



TMS Data Zone



Missouri Department of
TRANSPORTATION



888-ASK-MoDOT (275-6636)



TRAFFIC



SAFETY



PLANNING



BRIDGE



DESIGN



MAP-21



CONSTRUCTION

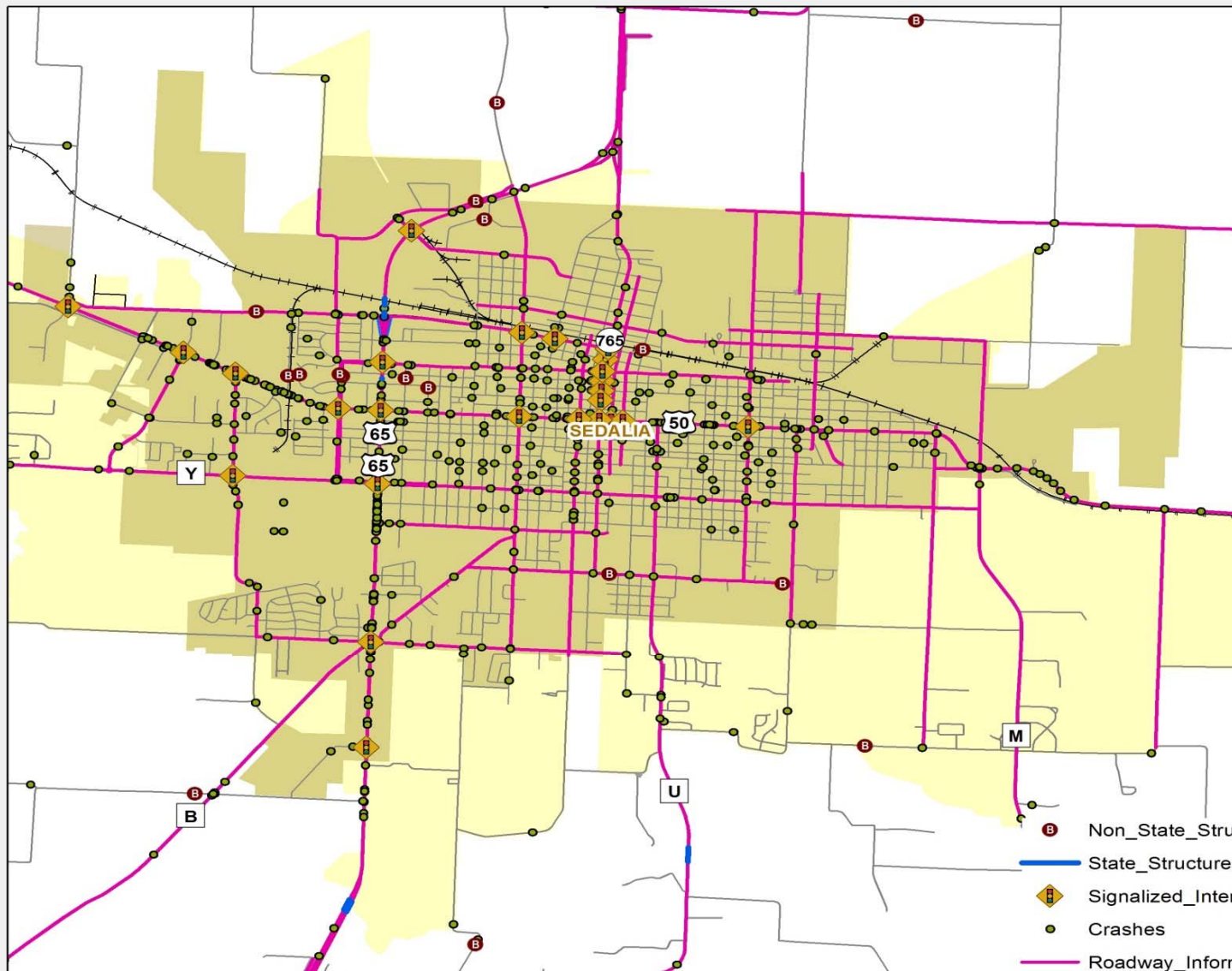







MULTIMODAL

What's included in the annual transportation data?



MoDOT Transportation Data



-  Non_State_Structures_2016_with_Scour
-  State_Structures_2016_with_Scour
-  Signalized_Intersections_2016
-  Crashes
-  Roadway_Information_2016

MoDOT Partner Collaboration Website



Home

FAST Act/MAP-21 Performance Management

Welcome to the Missouri Department of Transportation's FAST Act/MAP-21 collaboration site dedicated to performance management. Please share any resources you find helpful in the implementation of the national performance-based planning and programming requirements. MoDOT values your partnership as we collaborate together.

Shared Documents

[+](#) New [↑](#) Upload [↻](#) Sync [↻](#) Share [More](#) ▾

Current View [...](#) [🔍](#)

✓	📁	Name	Modified	Modified By
	📁	Final Rules	... March 15, 2016	■ Karen S. Miller
	📁	Monthly Conference Calls	... March 2, 2015	■ Karen S. Miller
	📁	Performance Examples	... April 22, 2015	■ Karen S. Miller
	📁	Presentations_Webinars_Meetings	... March 24, 2017	■ Karen S. Miller
	📄	Draft MoDOT FAST Act_MAP-21 Implementation Matrix	... Yesterday at 9:23 AM	■ Karen S. Miller
	📄	FHWA Implementation Timeline	... November 21, 2017	■ Karen S. Miller
	📄	MoDOT FAST Act MAP-21 Performance Measures	... Yesterday at 1:22 PM	■ Karen S. Miller
	📄	Rulemakings_FAST Act_MAP-21_Timeline	... October 25, 2017	■ Karen S. Miller

Drag files here to upload

Links

- ▣ [TPM - FHWA MAP-21](#)
- ▣ [AASHTO TPM](#)
- ▣ [CATT Lab Resources](#)
- ▣ [FHWA Performance Based Planning and Programming](#)
- ▣ [Transportation Planning Capacity Building](#)
- ▣ [MoDOT Tracker](#)
- ▣ [FTA](#)
- ▣ [Federal Register](#)
- ▣ [Where to post comments](#)

➕ [Add new link](#)

Your Questions



- Where do I find VMT/Commercial VMT?
- How do I export data from the TMS Data Zone?
- Where can I find TMS Metadata?