



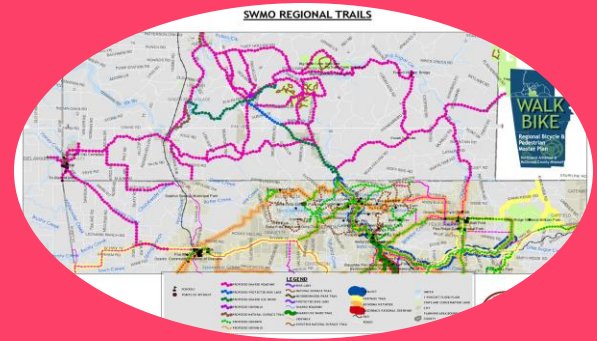
# HSTCC and Public Input



**TRUMAN**  
COORDINATING COUNCIL

# Hello!

Nikki Hill, Transportation Planner and  
GIS Tech for the  
Harry S Truman Coordinating Council  
[nhill@hstcc.org](mailto:nhill@hstcc.org)





# HSTCC

Members of the HSTCC are the cities and counties in good standing within Barton, Jasper, Newton & McDonald counties, as well as associate members who are stakeholders in the region



4

# Trail Planning!

**WALK  
BIKE**

Regional Bicycle &  
Pedestrian  
Master Plan

Northwest Arkansas &  
Southwest Missouri

*“Trails are the new golf courses”*



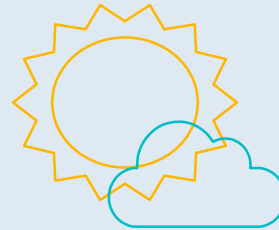
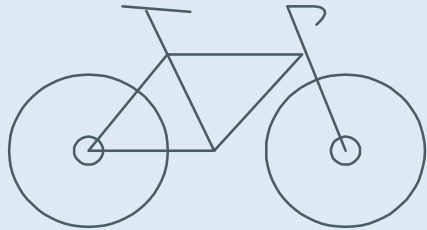
# March 6<sup>th</sup>, 2017 McDonald County Public Meeting for Regional Trails

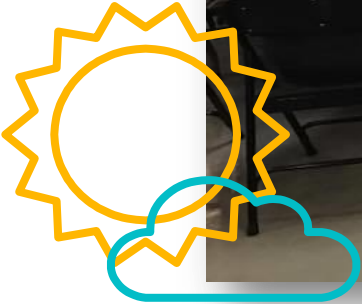


In a town of 800, 150 people attended.

They came over an hour away to participate in trail planning.

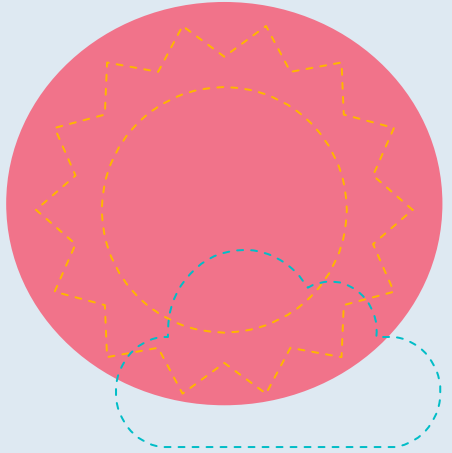
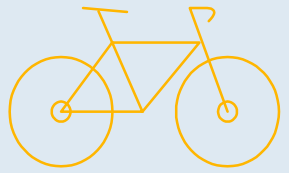
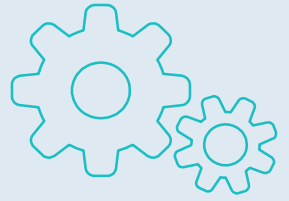
Razorback Greenway connection.







Mobile websites are just as important as desktop websites.





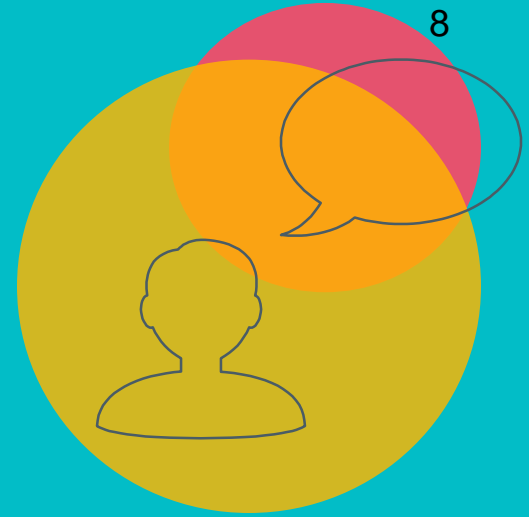
# Likes on Facebook



107  
in 2016 

257  
in 2018 

82.4%  
In a year and a half!

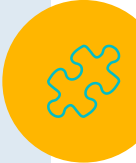
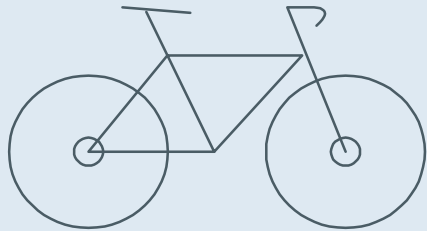
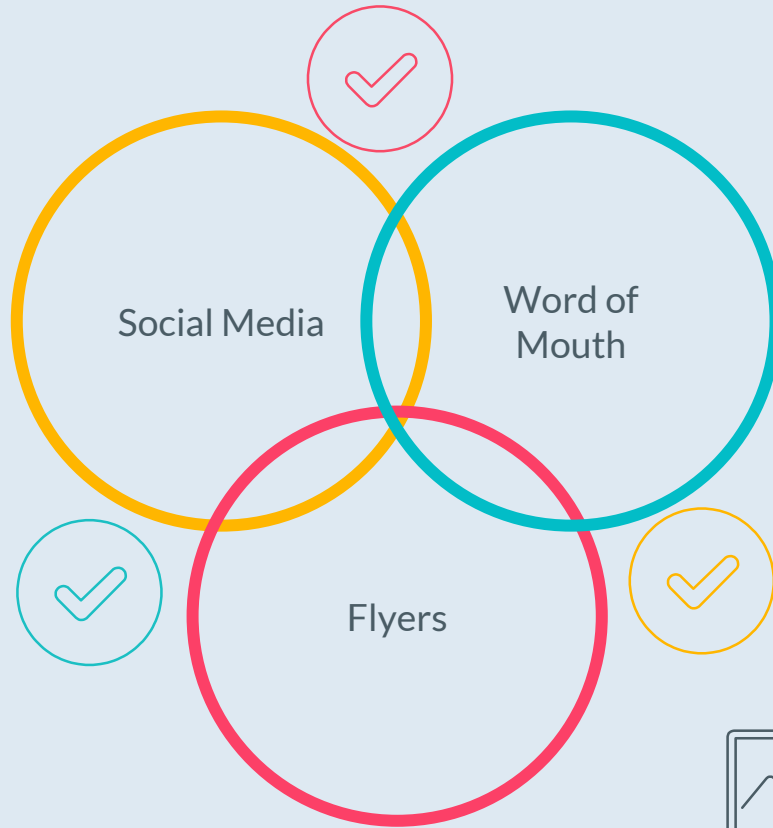


8





# Top three ways to get public participation

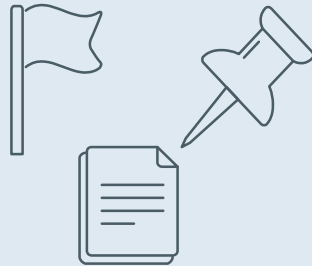


# Getting the public's attention!!!!



## Facebook

HSTCC creates sharable flyers and posts on the Facebook site once a week.



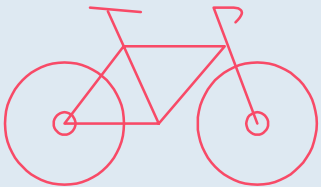
## Website

HSTCC strives to keep the website updated and refers to the site often for information.



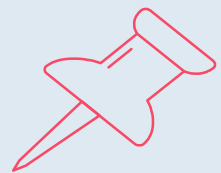
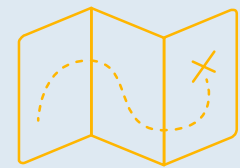
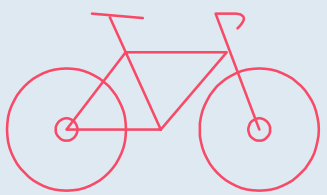
## Field Work

In a rural community such as McDonald County it's important to spread the information by physical flyer or word of mouth.





HSTCC Regional Trail Plan will be a large project. We have a separate tab for trail planning on our website. [hstcc.org/hstccregionaltrails](http://hstcc.org/hstccregionaltrails)





# Thanks!

## Any questions?

You can contact me at [nhill@hstcc.org](mailto:nhill@hstcc.org) or 417.649.6400

