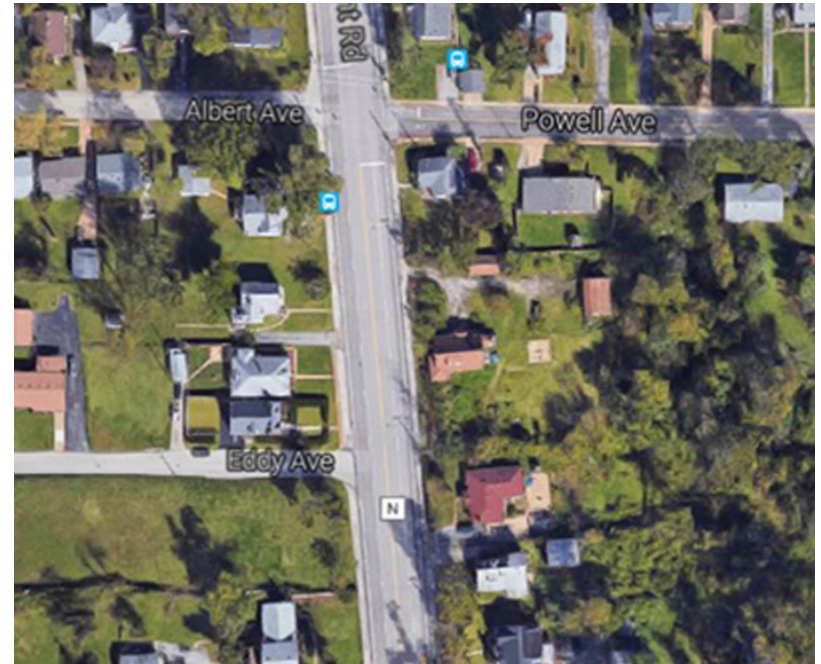


Hybrid Pedestrian Signal Florissant Road south of Eddy Avenue



Missouri Department of Transportation
St. Louis District
1590 Woodlake Drive
Chesterfield, MO 63017
1-888-ASK-MoDOT (275-6636)

<http://tinyurl.com/HybridPed>

<http://tinyurl.com/EnhancedPedCrossings>

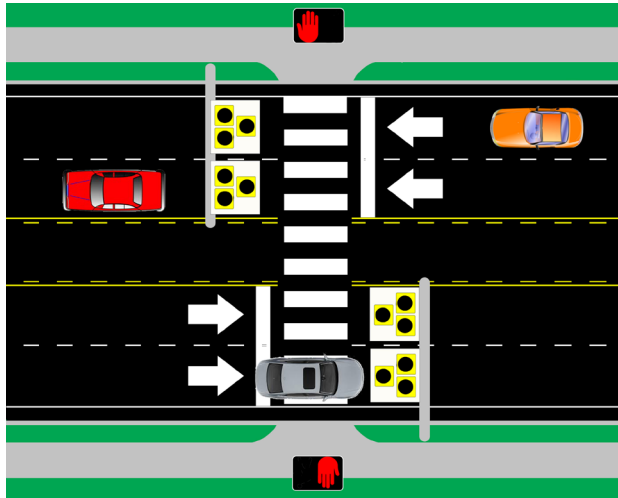
The Missouri Department of Transportation is planning to install a new type of pedestrian crossing on Florissant Road (Route N) just south of Eddy Avenue.

This hybrid pedestrian signal is the second of its type in the St. Louis region. The first is on Page Avenue between Dielman and Sims and has been operating successfully since installation in 2014.

This signal should be active by fall 2017.

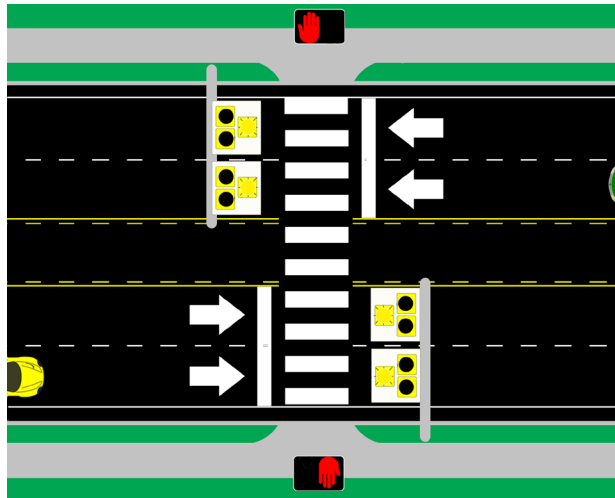
How to use the Hybrid Pedestrian Signal on Florissant Road

Step one



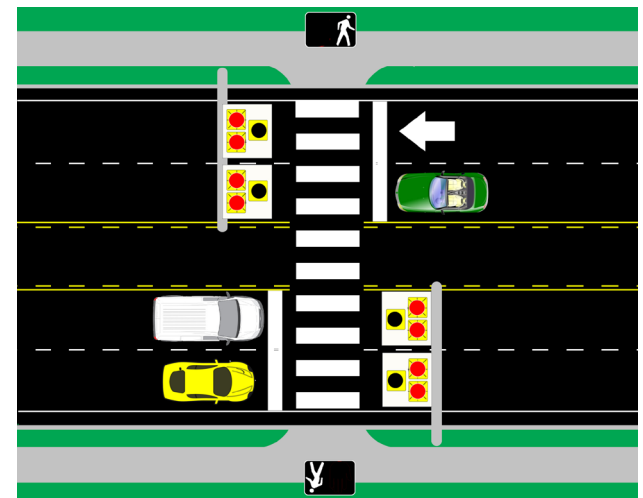
Traffic moves normally along the roadway until a pedestrian/cyclist comes up and activates the pedestrian crossing. Lights are dark.

Step two



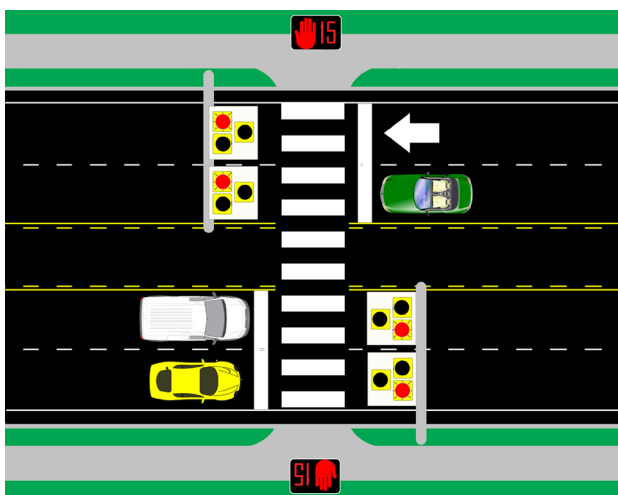
A flashing yellow warns traffic that the crossing is activated. It becomes a solid yellow light after six seconds. Traffic slows.

Step three



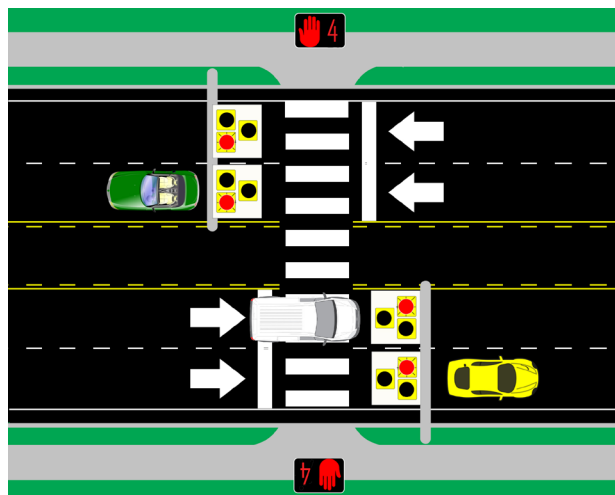
The lights change to steady red. Traffic stops. The walk sign activates for pedestrians.

Step four



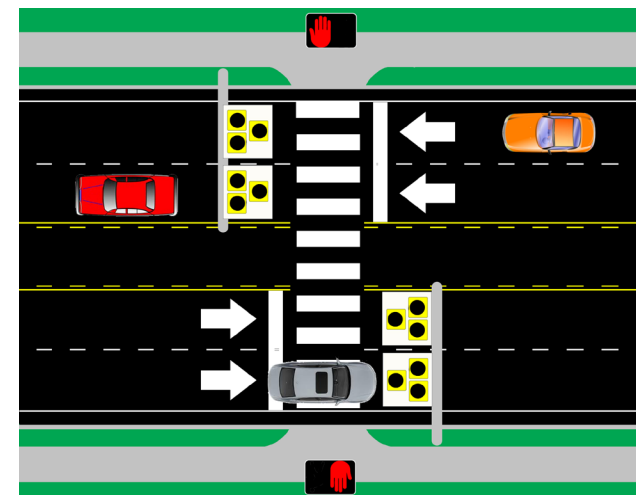
The countdown to clear the crosswalk begins. The red lights alternate flashing.

Step five



Red continues to flash. If ALL pedestrians have cleared the crosswalk, traffic may proceed cautiously after stopping.

Step six



The overhead lights go dark until the next pedestrian/cyclist activates the crossing.