



Historic Flooding Hits Franklin, Jefferson County Hard

Franklin and Jefferson County were hit particularly hard by the historic flooding around the St. Louis region last month. Nearly 12 inches of rain fell over three days, closing three interstates and countless other roads.

MoDOT crews and the National Guard spent hours sandbagging I-55 to keep it from going under, which has never happened before. If it weren't for their hard work, I-55 likely would have been closed longer than it was.

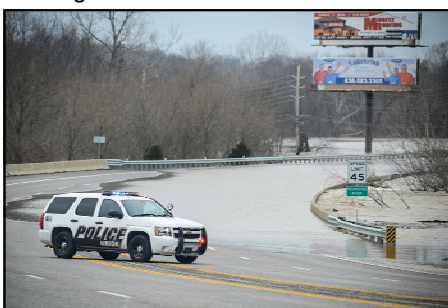
The rain also caused the side of Route T in Franklin County to slide away. We are working on getting bids on the repairs and hope to have Route T back open to traffic sometime in March if the weather cooperates.



Flooding on Interstate 55



Crews pumping water off Interstate 55



Flooding on Route 50 in Union



Flooding at Route 47 North and Route 50

Get a Heads Up on Future Construction Projects

The 2016-2017 planned construction maps for Franklin and Jefferson Counties are now on our website. The maps outline the major projects that will impact the area for the next two years.

The Franklin County map can be found at http://www.modot.org/stlouis/major_projects/documents/2016-2017FranklinConstructionMap.pdf. The Jefferson County map is at http://www.modot.org/stlouis/major_projects/documents/2016-2017JeffersonConstructionMap.pdf.



Judy Wagner

**MoDOT Franklin/
Jefferson County**

Area Engineer

314-453-5021

Judy.Wagner@modot.mo.gov

www.modot.org/stlouis

To report a road
concern, contact
MoDOT Customer
Service at:
314-275-1500
or toll free at
1-888-ASK-MODOT
(1-888-275-6636)

