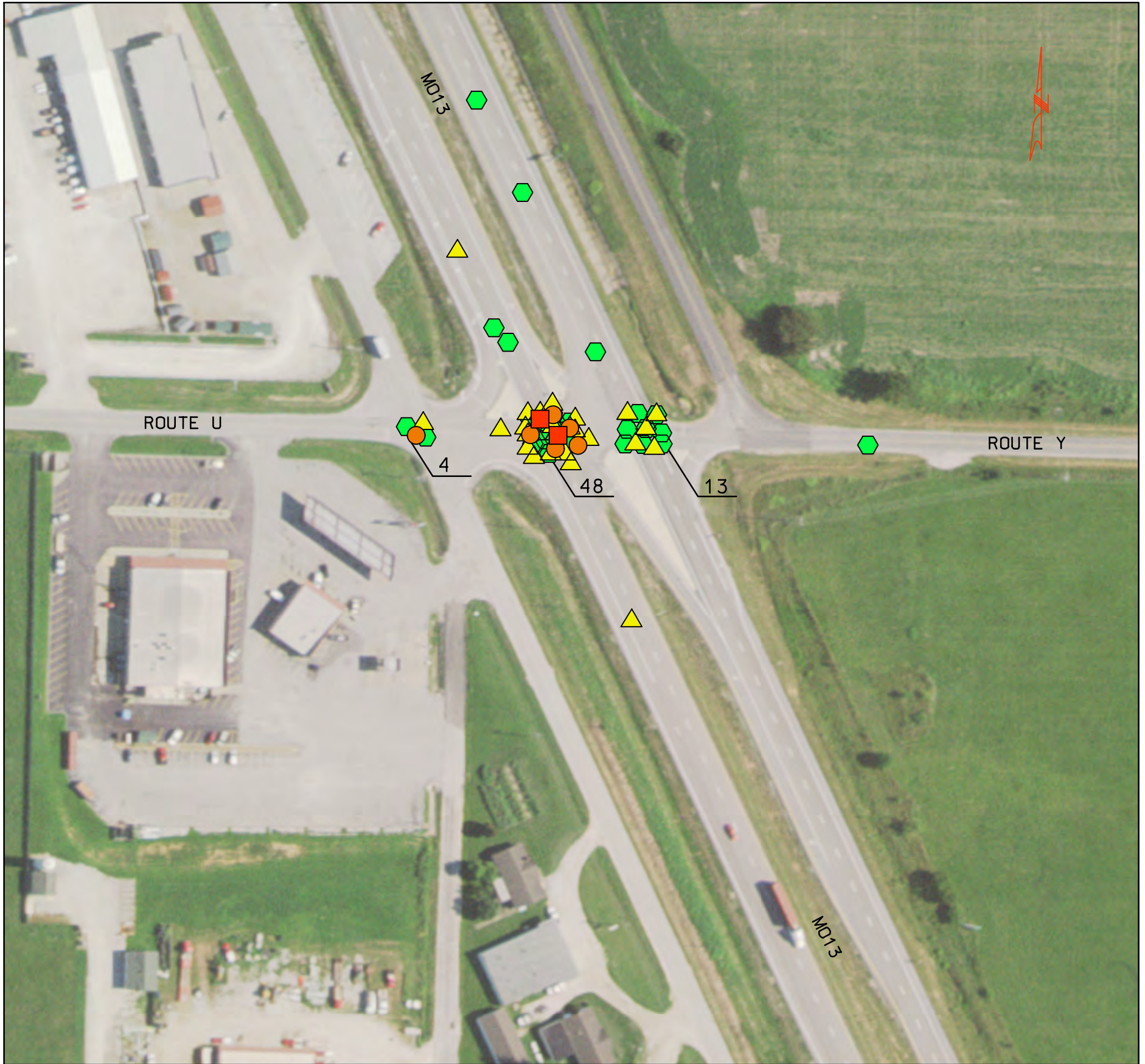






CRASH DIAGRAM





2012 - 2017



CRASH TOTALS

	PROPERTY DAMAGE	32
	MINOR INJURY	34
	SERIOUS INJURY	6
	FATAL	2

CRASH TOTAL BY YEAR

				
2012	7	4		
2013	6	3		
2014	5	3	2	
2015	9	6	2	1
2016	3	11	1	
2017	2	7	1	1