

2017 Construction Guide

Barry County

- **Route 76:** Resurface and add two-foot shoulder with rumble stripes between Barry/Stone county line and Route 112 in Cassville
- **Business 37:** Pavement sealing between Route 112 and Route 37 in Cassville
- **Route W:** Resurface and add two-foot shoulder with rumble stripes between Route 37 and Route 86 near Wheaton
- **Route W:** Sidewalk (ADA) improvements in Wheaton



Barton County

- **Route 126:** Pavement sealing between Dade/Barton county line and Missouri/Kansas state line
- **Route 43:** Pavement sealing between Route 126 and Jasper/Barton county line
- **Route P:** Bridge painting over Nicholson Creek west of Liberal
- **Route F:** Bridge painting over Horse Creek north of Newport



Bates County

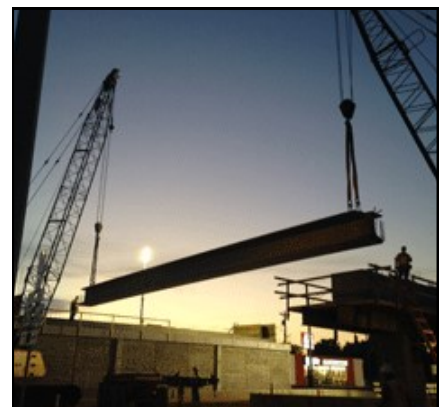
- **Route B:** Bridge replacement over drainage ditch overflow east of Rich Hill

Cedar County

- **Route 39:** Pavement sealing between Route 32 in Stockton and Cedar/Dade county line
- **Route 32:** High-friction resurfacing at Route CC south of Filley

Christian County

- **Route 14:** Resurface and add two-foot wide shoulder with rumble stripes between Route W in Ozark and Route 125 in Sparta
- **Route 14:** Sidewalk (ADA) improvements between Vanilla Bean Road and Route PP in Sparta
- **Route PP:** Sidewalk (ADA) improvements between Route 14 and Cherry Street in Sparta
- **Route 413:** Pavement sealing between Route 60 west of Billings and Christian/Stone county line



2017 Construction Guide

Dade County

- **Route 39:** Pavement sealing between Dade/Cedar county line to Dade/Lawrence county line
- **Route H:** Bridge deck replacement over Stockton Lake north of Greenfield
- **Route A:** Bridge painting over Muddy Fork west of Pennsboro

Dallas County

- **Route 32:** Pavement sealing between Polk/Dallas county line and Route 65 in Buffalo

Greene County

- **I-44:** Resurface between Route 125 in Strafford and Greene/Webster county line
- **I-44:** Lengthen interchange ramps between Glenstone Avenue and West Bypass (Route 160) in Springfield (PROJECT DELAYED UNTIL ROUTE 65 REBUILD COMPLETE)
- **Route 65:** Rebuild two outside lanes between Kearney Street and Sunshine Street in Springfield
- **Route 65:** Widen to six lanes between Route 60 in Springfield and Greene/Christian county line, widen and repair southbound bridge and replace northbound bridge over Springfield Lake
- **Chestnut Expressway (Business 65):** Build new bridge over railroad tracks west of Route 65, build new access roads on either side of Chestnut Expressway and install new traffic signal at Chestnut Expressway and Ingram Mill Road in Springfield
- **Route 60:** Build auxiliary lanes in each direction between Glenstone Avenue and National Avenue in Springfield (PROJECT DELAYED UNTIL ROUTE 65 REBUILD COMPLETE)
- **Route 60:** Smooth pavement (diamond-grind) between Kansas Expressway and Route 65 in Springfield
- **Route 360:** Smooth pavement (diamond-grind) between Route 413 and I-44 near Republic
- **Route 65:** Widen northbound to westbound interchange ramp at Division Street interchange, new traffic signals, relocate Eastgate Road to east, remove concrete median from Division Street over Route 65 and repair Division Street bridge deck (PROJECT DELAYED UNTIL ROUTE 65 REBUILD COMPLETE)
- **Route 125:** Add traffic signals at I-44 interchange in Strafford
- **Chestnut Expressway (Loop 44):** Resurface sections between I-44 and Glenstone Avenue in Springfield



2017 Construction Guide

- **Chestnut Expressway (Loop 44):** High-friction resurfacing westbound only between West Avenue and College Street in Springfield
- **Kearney Street (Route 744):** Sidewalk (ADA) improvements between West Bypass and Kansas Expressway
- **Kansas Expressway (Route 13):** Sidewalk (ADA) improvements and pedestrian crossing installation at Grand Street in Springfield
- **Kansas Expressway (Route 13):** High-friction resurfacing southbound only between railroad bridge and Division Street in Springfield
- **West Bypass (Route 160):** Sidewalk (ADA) improvements and pedestrian crossing installation at Chestnut Expressway in Springfield
- **Route 413:** Install turn lanes at various intersections between West Bypass in Springfield and Route 174 in Republic
- **Route H:** Bridge replacement over South Dry Sac Creek north of Springfield
- **Route H:** Pavement sealing between Greene/Polk county line and Valley Water Mill Road north of Springfield
- **Route EE:** Resurface and add two-foot shoulder with rumble stripes between West Bypass and Route AB west of Springfield
- **Route AB:** Resurface and add two-foot shoulder with rumble stripes between Route 160 in Willard and Route 266

Henry County

- **Route 52:** Resurface and add two-foot shoulder with rumble stripes between Route 13 in Clinton and Henry/Pettis county line in Windsor
- **Route 52:** Sidewalk (ADA) improvements in Calhoun
- **Route 52:** Bridge painting over Marshall's Creek west of Deepwater
- **Route 18:** Resurface between 2nd Street and 8th Street in Clinton
- **Route C:** Bridge painting over Tebo Arm of Truman Lake north of Coal

Hickory County

- **Route 54:** Resurface between Route D in Preston and Hickory/Camden county line

Jasper County

- **I-44:** Bridge painting over I-49 in Joplin
- **Route 96:** Replace bridges over Missouri and Northern Arkansas railroad and Spring River overflow in Carthage
- **Route 96:** Resurface between Garrison Avenue in Carthage and Jasper/Lawrence county line
- **Route 171:** Bridge replacement over Center Creek near Carl Junction



2017 Construction Guide

- **Route 249:** Repair erosion between Route VV and Route 171 in Joplin
- **Route 37:** Resurface and add two-foot shoulder with rumble stripes between Route 96 and Joplin Street in Sarcoxie
- **Route 37:** Sidewalk (ADA) improvements in Sarcoxie
- **Route M:** Bridge painting over Little North Fork Creek near Asbury
- **Route M:** Bridge painting over Colliers Branch near Jasper

Lawrence County

- **I-44:** Bridge rehabilitation over Spring River (MM 43) west of Mount Vernon
- **Route 39:** Pavement sealing between Lawrence/Dade county line and Business 39 in Mount Vernon
- **Route 39:** Resurface and two-foot shoulder with rumble stripes between I-44 in Mount Vernon and Olive Street in Aurora
- **Route 97:** Sealing pavement between Route 96 and I-44 near Stotts City
- **Business 60:** Bridge replacement over railroad tracks east of Monett
- **Route 265:** Pavement sealing between Route 60 and Lawrence/Christian county line near Marionville
- **Route M:** Resurface and add two-foot shoulder with rumble stripes between Route 96 and Route 174 near Mount Vernon

McDonald County

- **I-49:** Resurface between Route 59 south of Goodman and Route 76 in Pineville
- **Route 76:** Resurfacing and adding two-foot shoulder with rumble stripes between Route U and east of I-49 near Anderson
- **Route E:** Bridge replacement over Big Sugar Creek in Powell

Newton County

- **Route 43:** Bridge replacement over Roark Creek south of Seneca
- **Route NN:** Pavement sealing between Route 86 south of Joplin and Route 86 west of Neosho

Polk County

- **Route 32:** Pavement sealing between Route D in Bolivar and Polk/Dallas county line
- **Route 215:** Bridge painting over Pomme de Terre River east of Pleasant Hope
- **Route H:** Pavement sealing between Route 215 in Pleasant Hope and Polk/Greene county line



2017 Construction Guide

Stone County

- **Route 413/265:** Pavement sealing between Stone/Christian county line and Route 13 near Reeds Spring
- **Route 265:** Pavement sealing between Route 76 and Stone/Taney county line near Branson
- **Route 465:** Resurface between Route 76 and Stone/Taney county line near Branson
- **Route 76:** High-friction resurfacing east of Cape Fair
- **Route 86:** Pavement sealing between Stone/Barry county line and Stone/Taney county line

St. Clair County

- **Route D:** Bridge painting over Gallinipper creek near Lowry City
- **Route H:** Bridge painting over Clear Creek south of Taberville

Taney County

- **Route 465:** Resurface between Route 65 north of Branson and Taney/Stone county line
- **Route 248:** Resurface between Route 65 and Shepherd of the Hills Expressway in Branson
- **Route 65:** Resurface between a point north of Route 465 and Missouri/Arkansas state line south of Hollister
- **Route 76:** Resurface and add two-foot wide shoulder with rumble stripes between Route 65 in Branson and Route 160 near Forsyth
- **Business 65:** Resurface between Taneycomo Bridge and Route 65 in Hollister
- **Route 160:** New bridge over Bull Shoals Lake near Forsyth
- **Route 76:** Bridge replacements over Beaver Creek, Caney Creek and Kentucky Creek near Bradleyville
- **Route 76:** Add turn lanes and guardrail at Lake Shore Drive near Branson
- **Business 65:** Sidewalk (ADA) improvements between 6th Street and a point west of Lake Taneycomo in Branson
- **Route 160:** High-friction resurfacing in two locations east of Merriam Woods
- **Route 86:** Pavement sealing between Taney/Stone county line and Route 65 south of Hollister



2017 Construction Guide

Vernon County

- **I-49:** Bridge painting over railroad tracks south of Nevada
- **Route 54:** Add seven foot shoulders between Route AA and County Road 2650 near Dederick
- **Route K:** Bridge replacement over west fork of Clear Creek near Nevada
- **Route E:** Bridge painting over Clear Creek near Milo
- **Route B:** Bridge painting over Clear Creek east of Sheldon

Webster County

- **I-44:** Resurface between Webster/Greene county line and Webster/Laclede county line
- **I-44:** High-friction resurfacing eastbound only at Route B at Northview
- **I-44:** Resurface in areas east of Route 38 near Marshfield
- **Route BB:** Bridge replacement over Finley Creek south of Seymour

* All projects scheduled for completion by the end of 2017, unless otherwise noted.

