

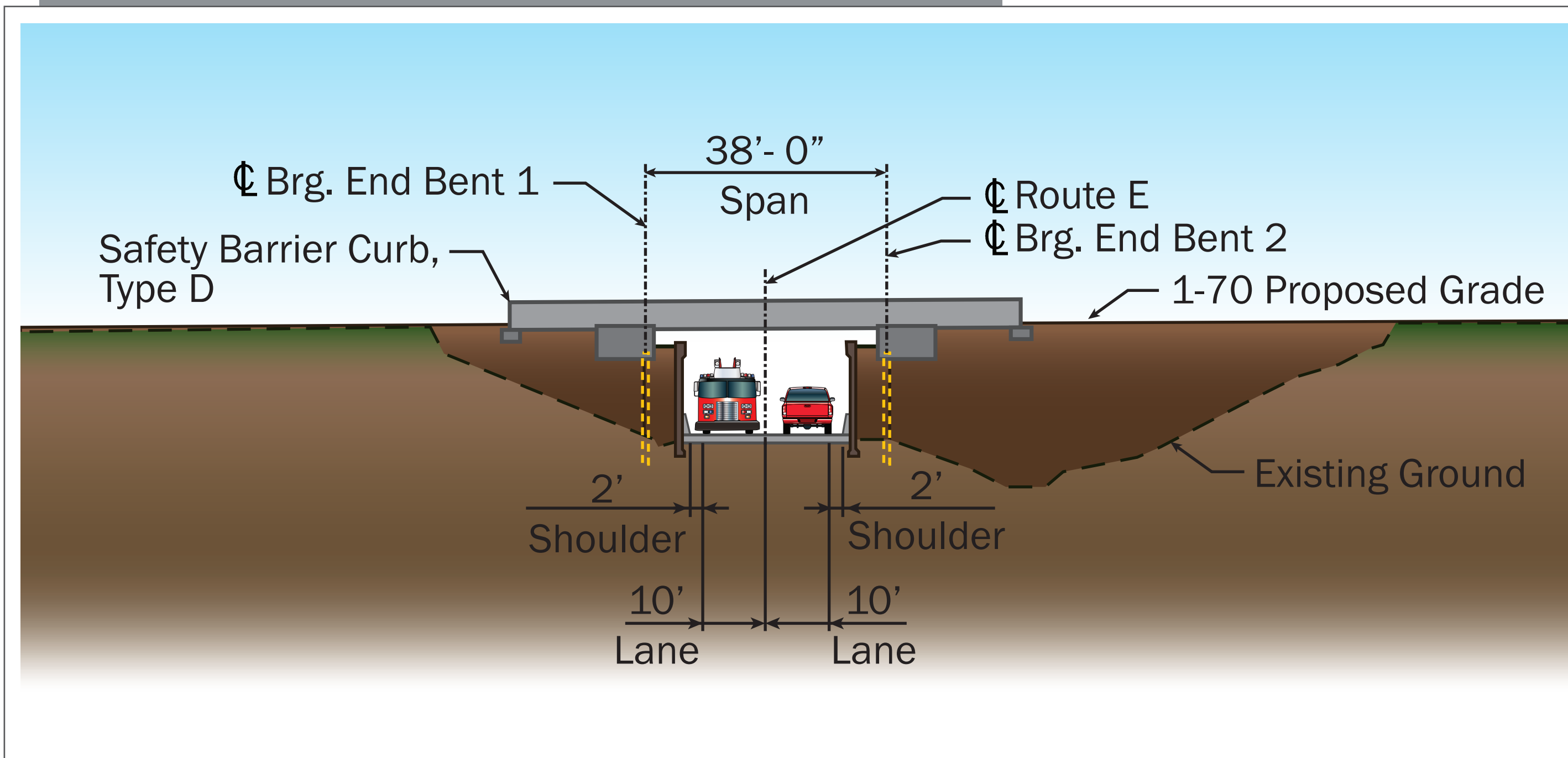
I-70 over Route E



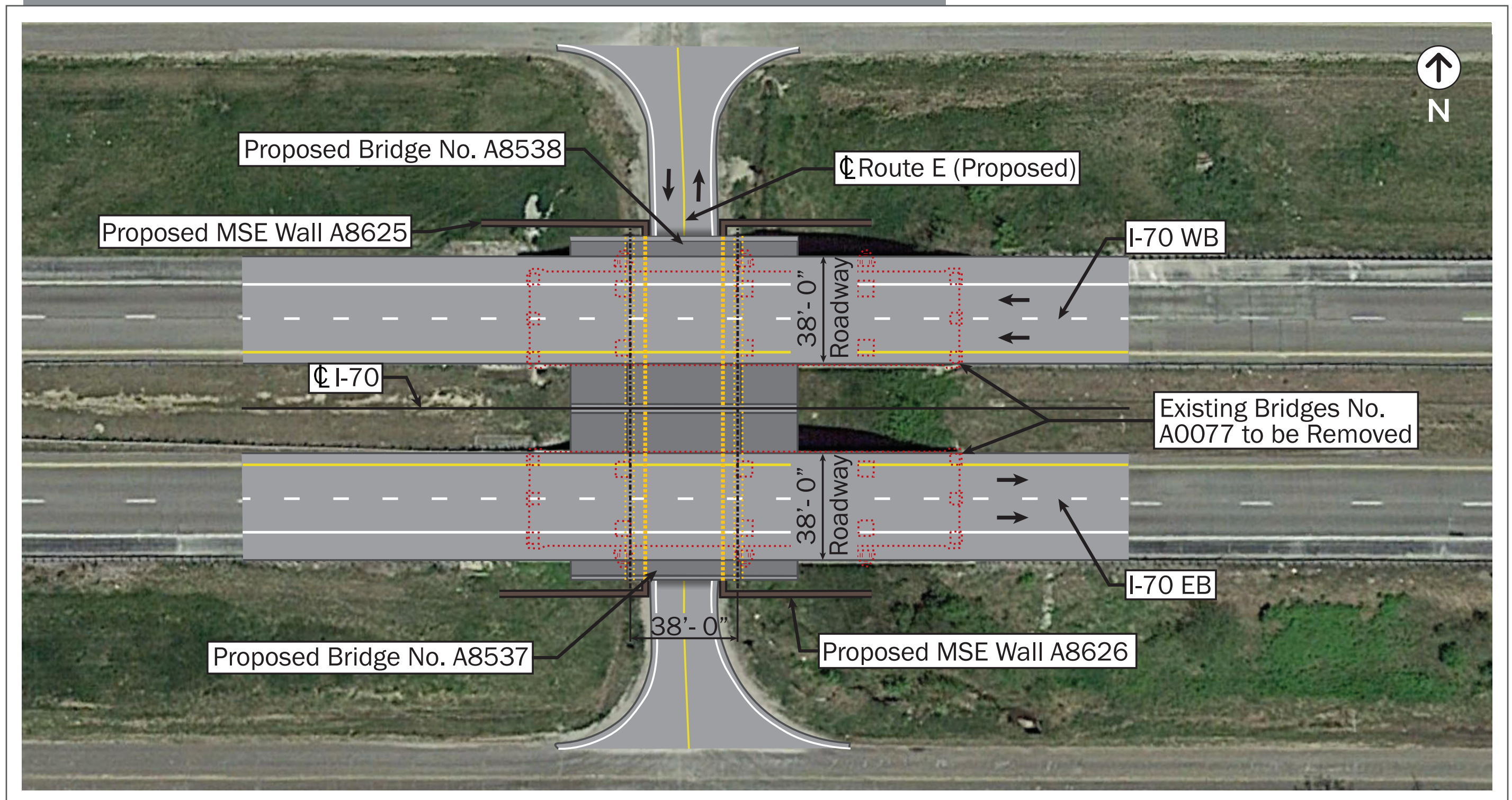
MoDOT Job No. J313010 | Lafayette County

Public Meeting | April 6, 2017

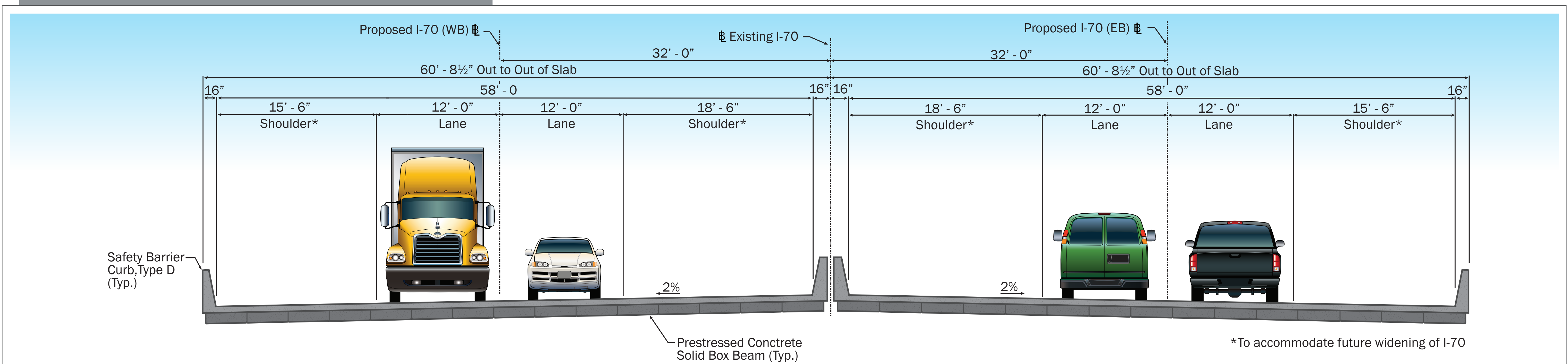
1 Elevation of proposed I-70 over Route E



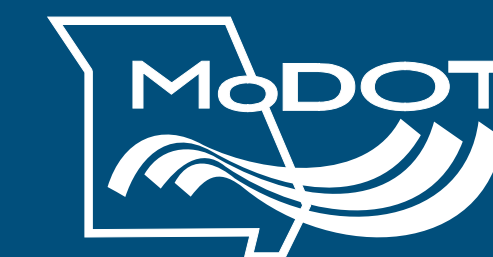
2 Plan view of proposed I-70 over Route E



3 Interstate 70 Bridges Typical Sections



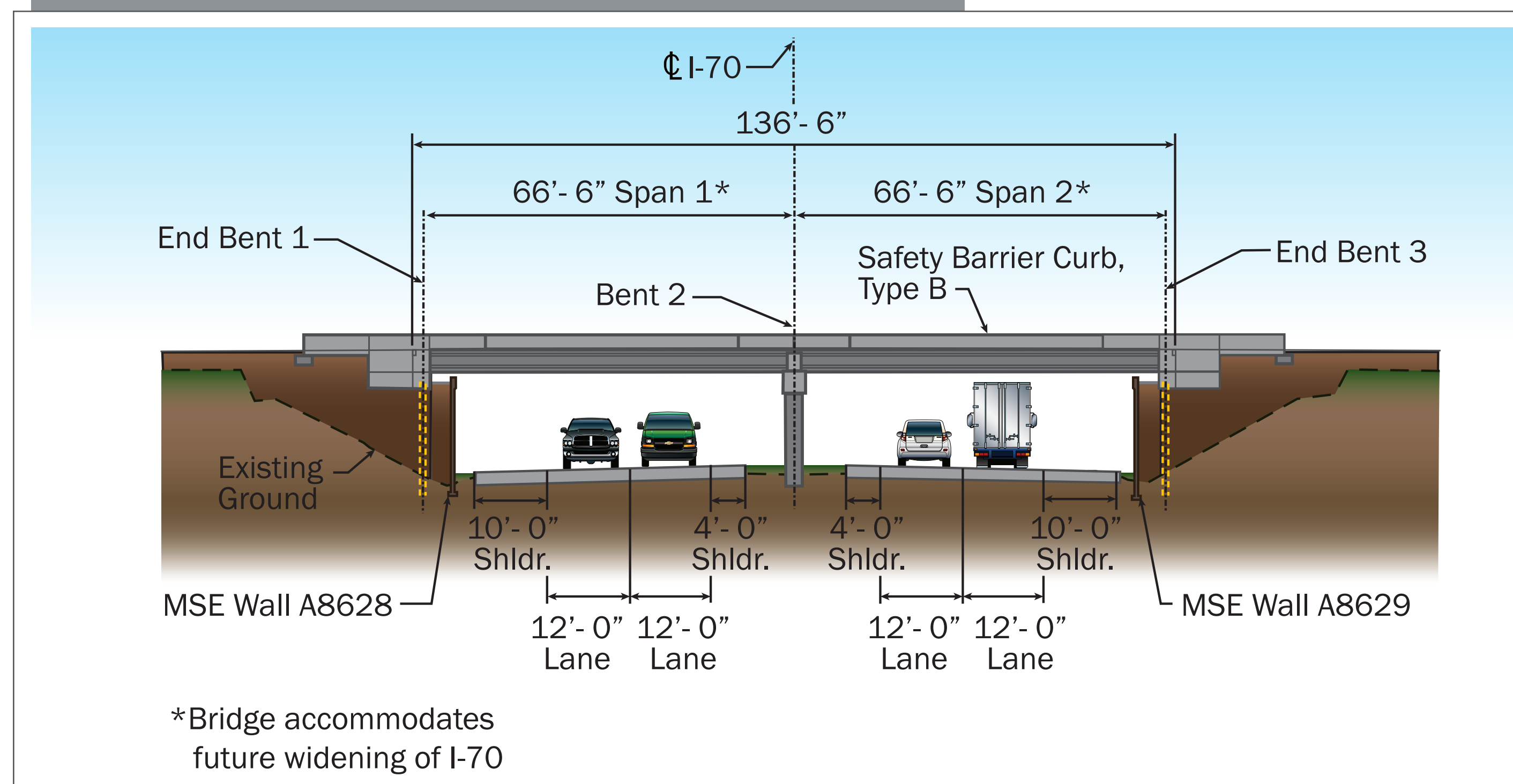
Route H over I-70



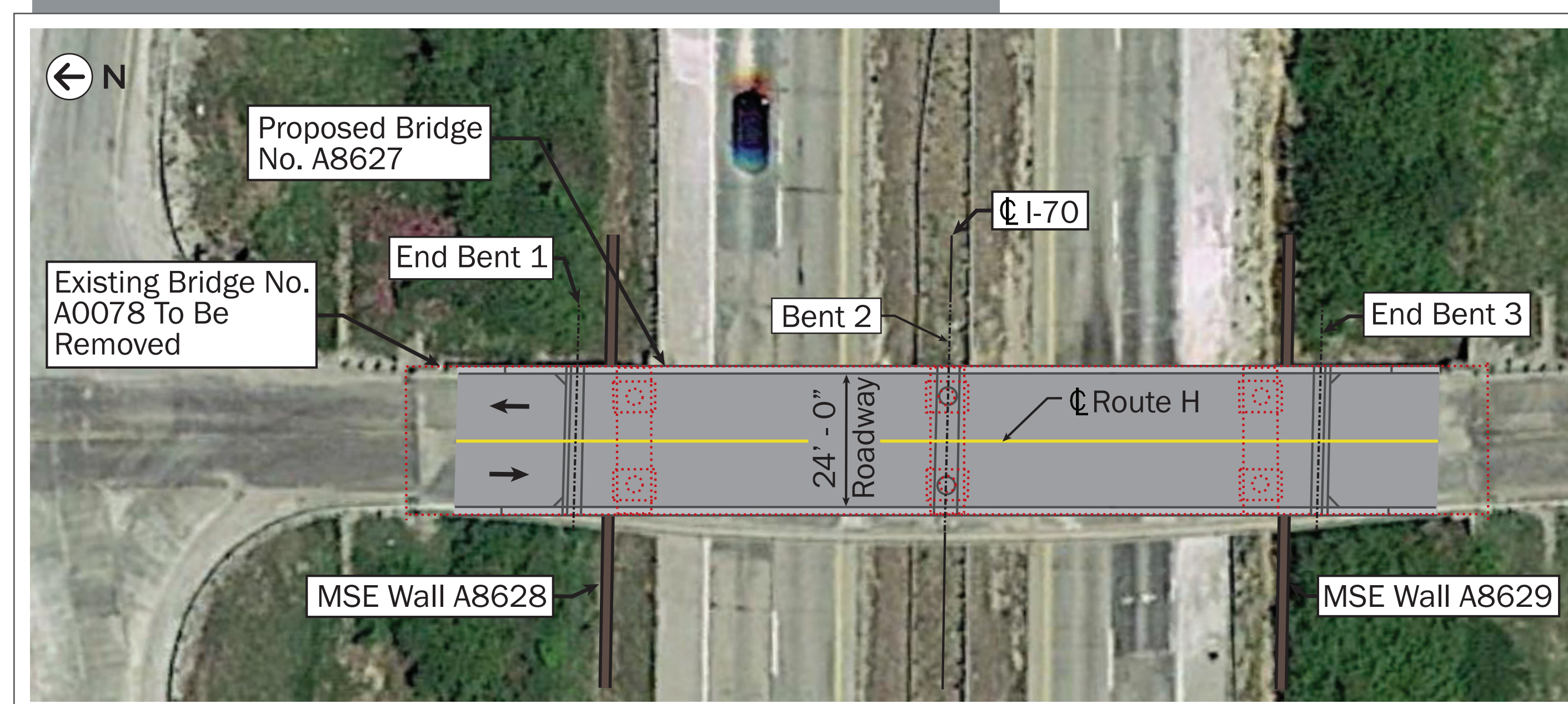
MoDOT Job No. J313010 | Lafayette County

Public Meeting | April 6, 2017

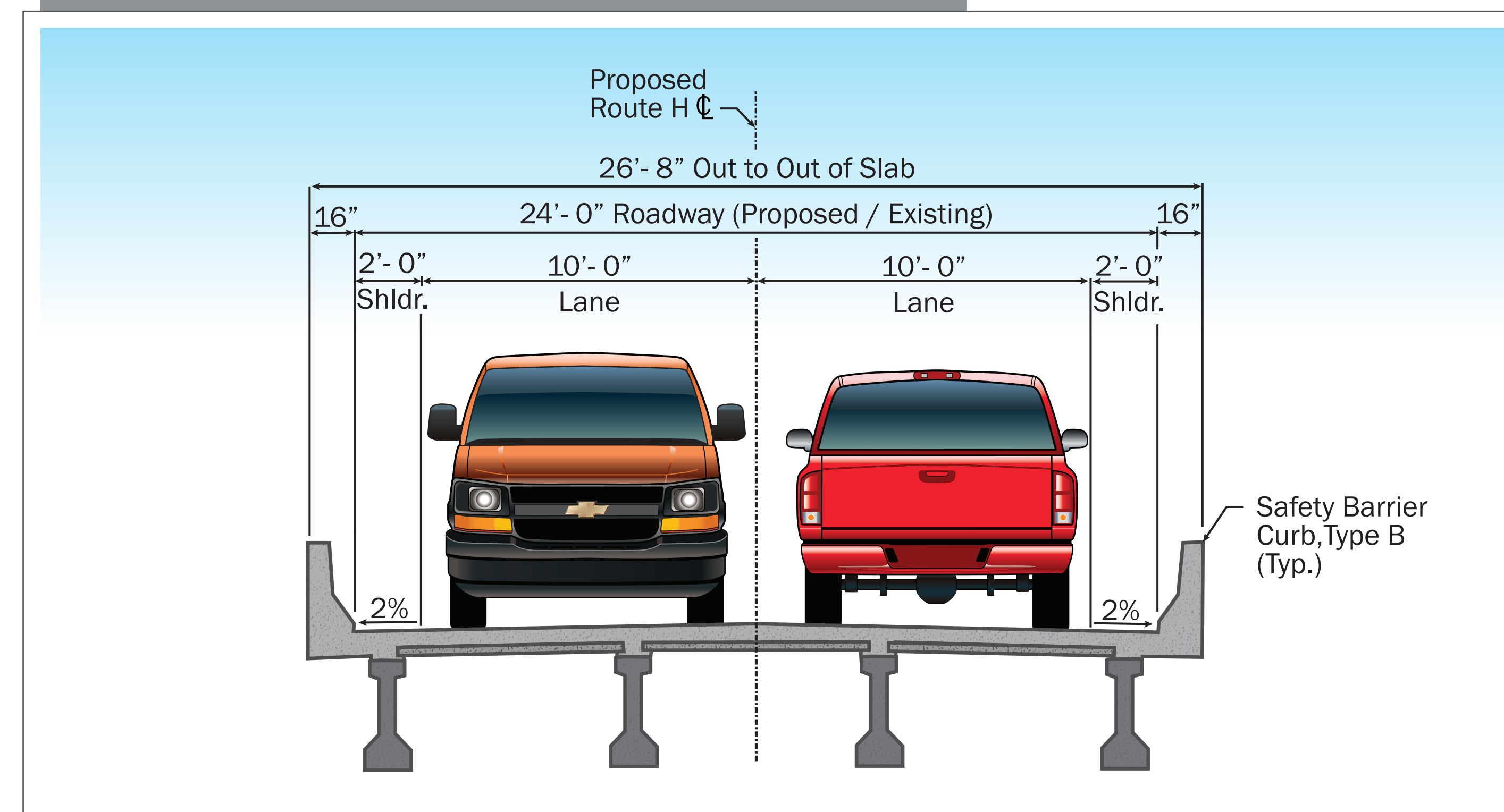
1 Elevation of proposed Route H over I-70



2 Plan view of proposed Route H over I-70



3 Route H Bridge Typical Section



I-70 over Route E



MoDOT Job No. J313010 | Lafayette County

Public Meeting | April 6, 2017



Remove and replace bridges at Route E and H