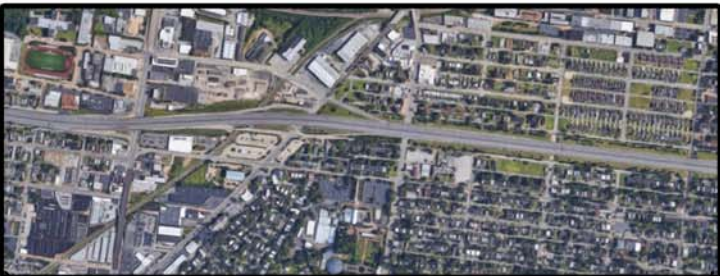


Upcoming St. Louis City I-44 construction

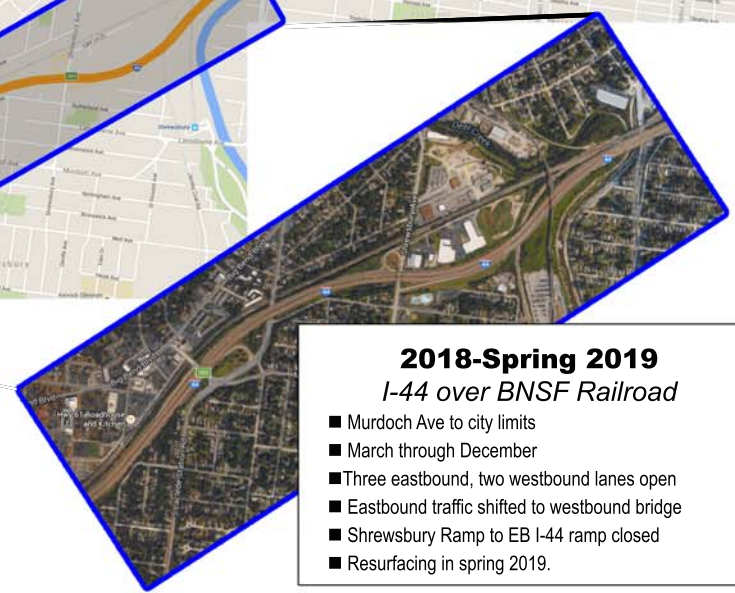
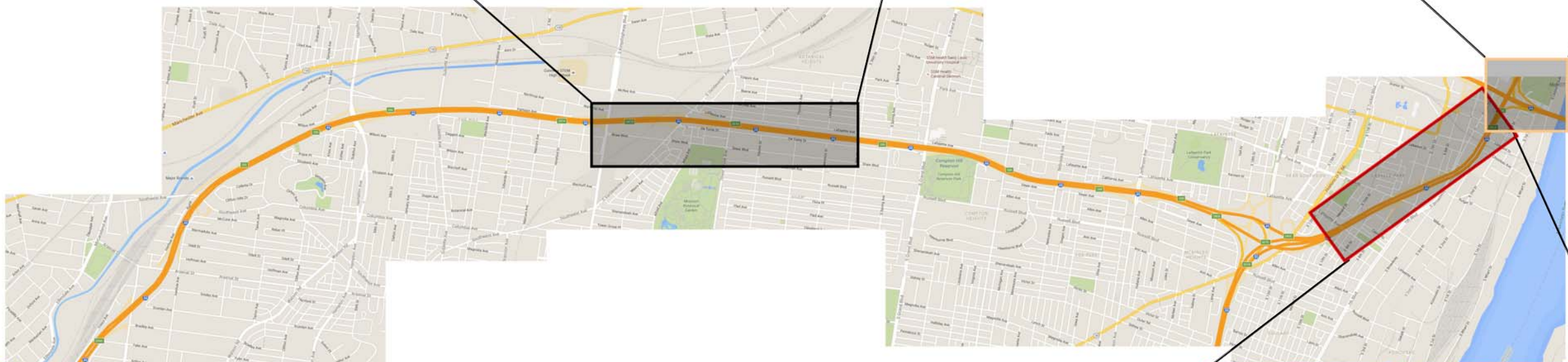
2018-late 2019
Bridge work btwn Kingshighway, 39th Street

- Rehabilitates UPRR, Vandeventer, Tower Grove bridges
- Replaces Kingshighway, Thurman, 39th Street bridges
- Replaces pedestrian bridge near Edwards
- One lane eastbound, two lanes westbound closed around the clock
- Ramps and cross streets may be closed during construction



2018-Spring 2019
Poplar Street Bridge widening

- I-55/I-44 ramp to EB I-64 closed through February
- Around the clock lane closures EB/WB I-64
- Adds one eastbound lane
- Extends 6th Street exit ramp to Illinois Route 3
- New driving surface eastbound
- Painting and preventative maintenance in 2019



2018-Spring 2019
I-44 over BNSF Railroad

- Murdoch Ave to city limits
- March through December
- Three eastbound, two westbound lanes open
- Eastbound traffic shifted to westbound bridge
- Shrewsbury Ramp to EB I-44 ramp closed
- Resurfacing in spring 2019.

Summer 2018
Northbound I-55/Westbound I-44

- Through Summer 2018
- Off-peak and weekend lane closures
- Smoothing out northbound lanes and final striping



Upcoming construction on I-44 in St. Louis County

Fall 2018-2021

I-44 Bridges over Meramec

- Replace the westbound and eastbound I-44 bridges
- Replace the I-44 ramp bridges to, from Watson Road
- One I-44 lane closed around the clock, each direction
- Summer ramp closures to replace Watson bridges
- Shifting traffic and lanes throughout project
- Starts after Route 141 Design Build completed



2018-Spring 2019

I-44 over BNSF Railroad

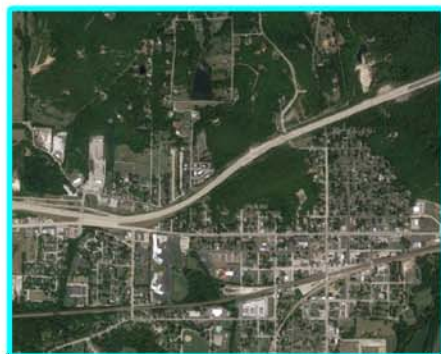
- Murdoch Ave to city limits
- March through December
- Three eastbound, two westbound lanes open
- Eastbound traffic shifted to westbound bridge
- Shrewsbury Ramp to EB I-44 ramp closed
- Resurfacing in Spring 2019



2019

Bridge rehabilitation near Pacific

- Repairs Osage Street, Route OO and Viaduct bridges
- Overnight or weekend lane closures on I-44.



Through July 2018

Route 141 Design Build

- Improves traffic flow between I-44 and Route 141
- Includes new loop ramps and flyover ramp
- Off-peak lane closures



2018

Murdoch to Route 141

- Pavement repairs and resurfacing
- March through December
- Off-peak lane closures each direction
- Will not include between Lindbergh and Soccer Park
- Overnight ramp closures

