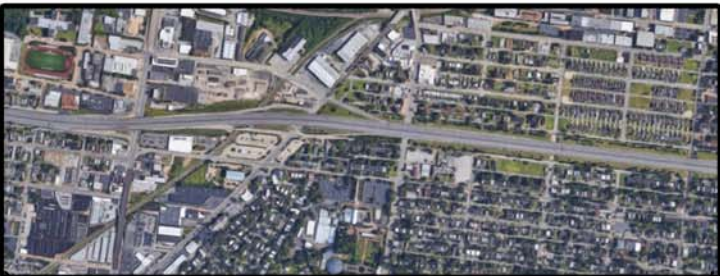


Upcoming St. Louis City I-44 construction

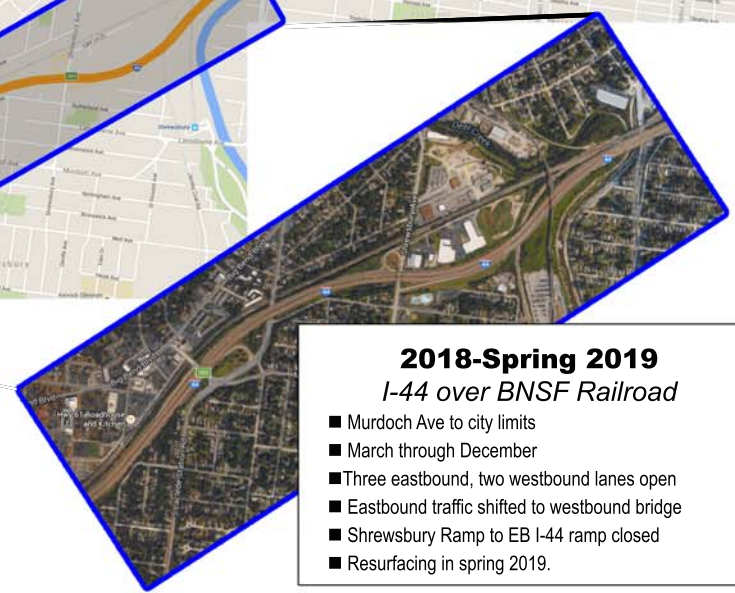
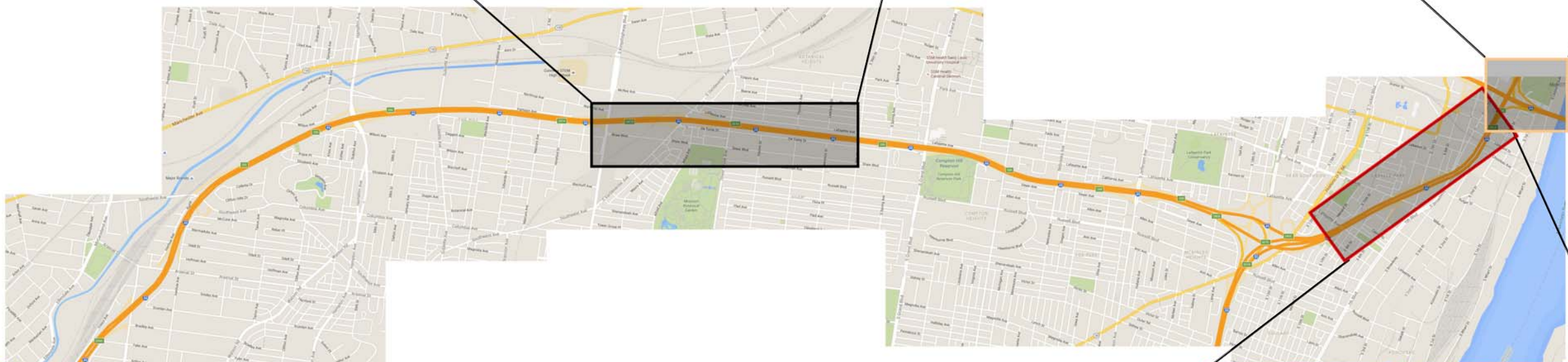
2018-late 2019
Bridge work btwn Kingshighway, 39th Street

- Rehabilitates UPRR, Vandeventer, Tower Grove bridges
- Replaces Kingshighway, Thurman, 39th Street bridges
- Replaces pedestrian bridge near Edwards
- One lane eastbound, two lanes westbound closed around the clock
- Ramps and cross streets may be closed during construction



2018-Spring 2019
Poplar Street Bridge widening

- I-55/I-44 ramp to EB I-64 closed through February
- Around the clock lane closures EB/WB I-64
- Adds one eastbound lane
- Extends 6th Street exit ramp to Illinois Route 3
- New driving surface eastbound
- Painting and preventative maintenance in 2019



2018-Spring 2019
I-44 over BNSF Railroad

- Murdoch Ave to city limits
- March through December
- Three eastbound, two westbound lanes open
- Eastbound traffic shifted to westbound bridge
- Shrewsbury Ramp to EB I-44 ramp closed
- Resurfacing in spring 2019.

Summer 2018
Northbound I-55/Westbound I-44

- Through Summer 2018
- Off-peak and weekend lane closures
- Smoothing out northbound lanes and final striping

