

Catalog Number:  
**CP3B62C2PLAOMO1**

120/240 VAC, 1-phase, 3-wire; 200 Amps Maximum, (see Main circuit breaker rating)  
Rainproof - Type 3R, Aluminum Enclosure, unpainted BARE  
Enclosed Industrial Control - Suitable ONLY for Use as Service Equipment  
The short circuit current rating is 10,000 RMS symmetrical amperes maximum at 240volts maximum, in accordance with the table below, but is limited to the lowest short circuit rating of any installed circuit breaker. Watthour meter is not included in the short circuit rating. Replacement circuit breakers must be of the same type and rating.

**LEFT SIDE METERED LIGHTING CIRCUIT DIRECTORY**

No.	Amp.	Poles	Circuit Description
1	100	2	MAIN
2	40	1	ALPHA POWER
3	20	1	GFI RECEPT
4	30	1	SIGNAL
5	15	1	FAN
6			
7			
8			

All nameplates to be riveted on.

**"MAIN" NAMEPLATES  
MUST BE RED WITH  
WHITE LETTERING**

**LEFT SIDE METERED LIGHTING CIRCUIT BREAKER TABLE**

AIC RATING	MAIN	BRANCHES
<b>10</b>	SIEMENS TYPE BQ	SIEMENS TYPE BQ FAN

**RIGHT SIDE METERED SIGNAL CIRCUIT DIRECTORY**

No.	Amp.	Poles	Circuit Description
9	100	2	MAIN
10	30	2	LIGHTING
11	30	2	LIGHTING
12	30	2	LIGHTING
13	15	1	CONTROL
14	30	2	LIGHTING
15			
16			

**RIGHT SIDE METERED SIGNAL CIRCUIT BREAKER TABLE**

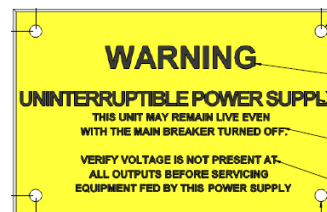
AIC RATING	MAIN	BRANCHES
<b>10</b>	SIEMENS TYPE BQ	SIEMENS TYPE BQ

Circuit breaker handle trip position is between "ON" and "OFF". To reset breaker, move handle to the full "OFF" position, then to full "ON".

BATTERY COMPARTMENT FAN SHOULD EXHAUST OUT (Mounted High)

CUSTOMER COMPARTMENT FAN SHOULD TAKE IN AIR (Mounted Low)

**LABEL 1161776 MUST BE  
PLACED UNDER  
SIGNAL(RIGHT) METER ON  
CUSTOMER DOOR**



**Terminal Information, Use AL/CU conductors**

FIELD WIRED CONNECTORS				BUS CONNECTIONS				For Equipment Ground ONLY, multiple conductors in a single opening are permissible as indicated below		
Socket Size	Torque Lb.-In.	SLOTTED HEAD SCREWS		THREADFORMING SCREWS		Torque, Lb.-In.	AWG Wire Size	Small Hole	Large Hole	
		AWG Wire Size	Torque, Lb.-In.	SCREW	MAT'L					
5/16"	275	#14-10	20	35	10-24	AL	30			
3/8"	375	#8	25	40	10-24	CU	50	#14-10	1-2	1-2
1/2"	500	#6	35	45	1/4-20	AL	50	#10	1	3
9/16"	600	#4	-	45	1/4-20	CU	72	#8 - 6	1	1
		#3-1/0	-	50				#4 - 1/0		1

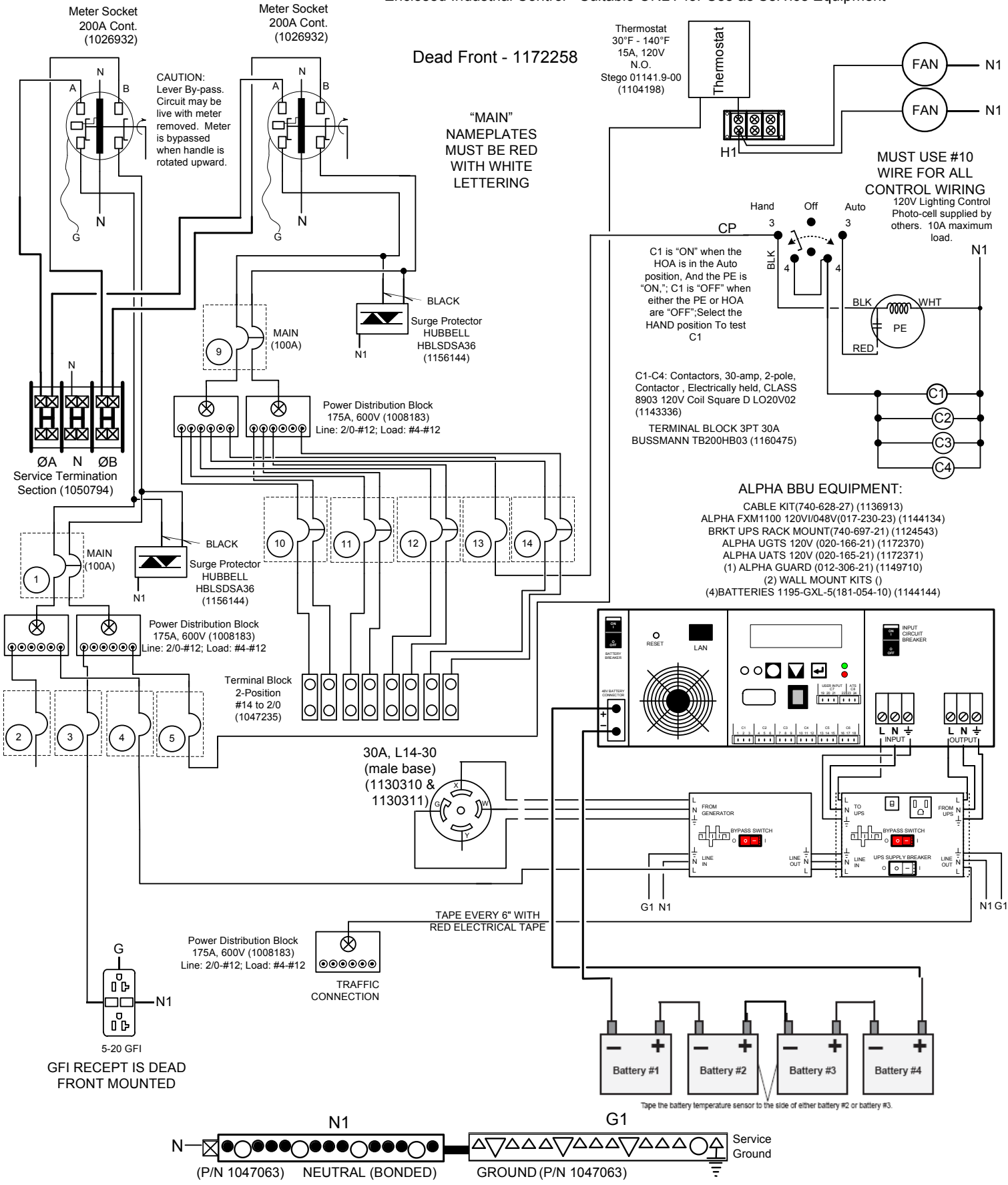
Shipping may loosen electrical connections. CHECK TIGHTNESS BEFORE ENERGIZING.

**BONDED NEUTRAL** – Remove neutral load conductors for test purposes only! FIELD INSTALLED conductors shall be 60°C, 75°C, or 90°C, sized to 60°C rating for 110 amps or less; and 75°C or 90°C for 125 amps and above.



Catalog Number:  
**CP3B62C2PLAOMO1**

120/240 VAC, 1-phase, 3-wire; 200 Amps Maximum, (see Main circuit breaker rating)  
Rainproof - Type 3R, Aluminum Enclosure, unpainted BARE  
Enclosed Industrial Control - Suitable ONLY for Use as Service Equipment



## CP3B112WLAO USP

FAN, 106CFM

200A RINGLESS LEVER BYPASS METER SOCKETS

BATTERY

FUSES, FANS

THERMOSTAT, FAN

HAND-OFF-AUTO SWITCH

PHOTO CELL RECEPTACLE WINDOW WITH SHIELD (IF APPLICABLE)

L14-30R INLET WITH COVER & PADLOCK HASP

LEFT METERED BREAKERS

LEFT METERED MAIN

FAN, 106CFM

UPS INVERTER

RIGHT METERED BREAKERS

RIGHT METERED MAIN

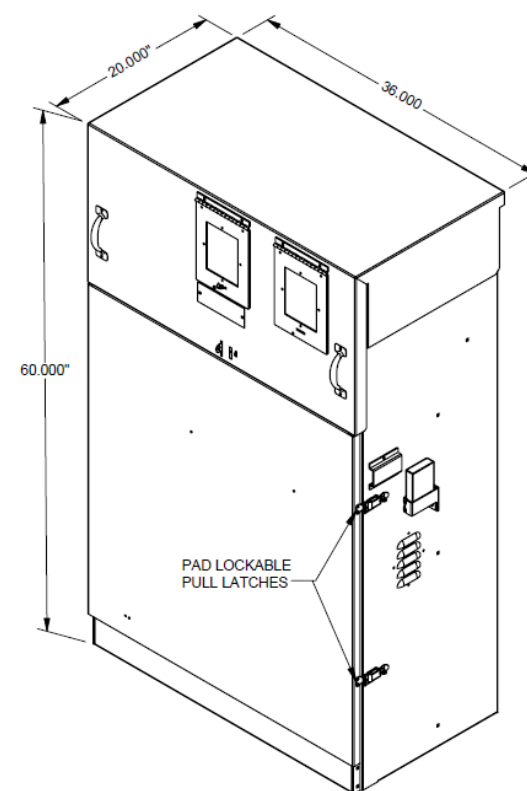
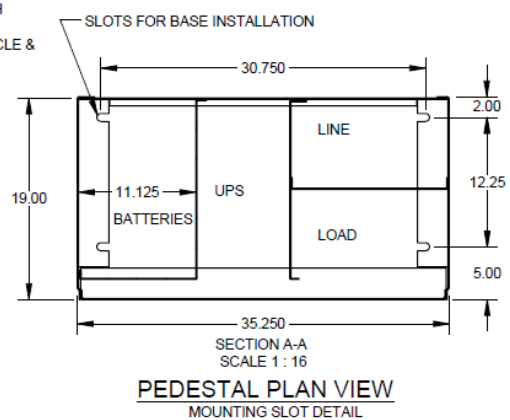
LIGHTING CONTACTORS



DEAD FRONT

VENTED LOUVERS WITH WIRE MESH

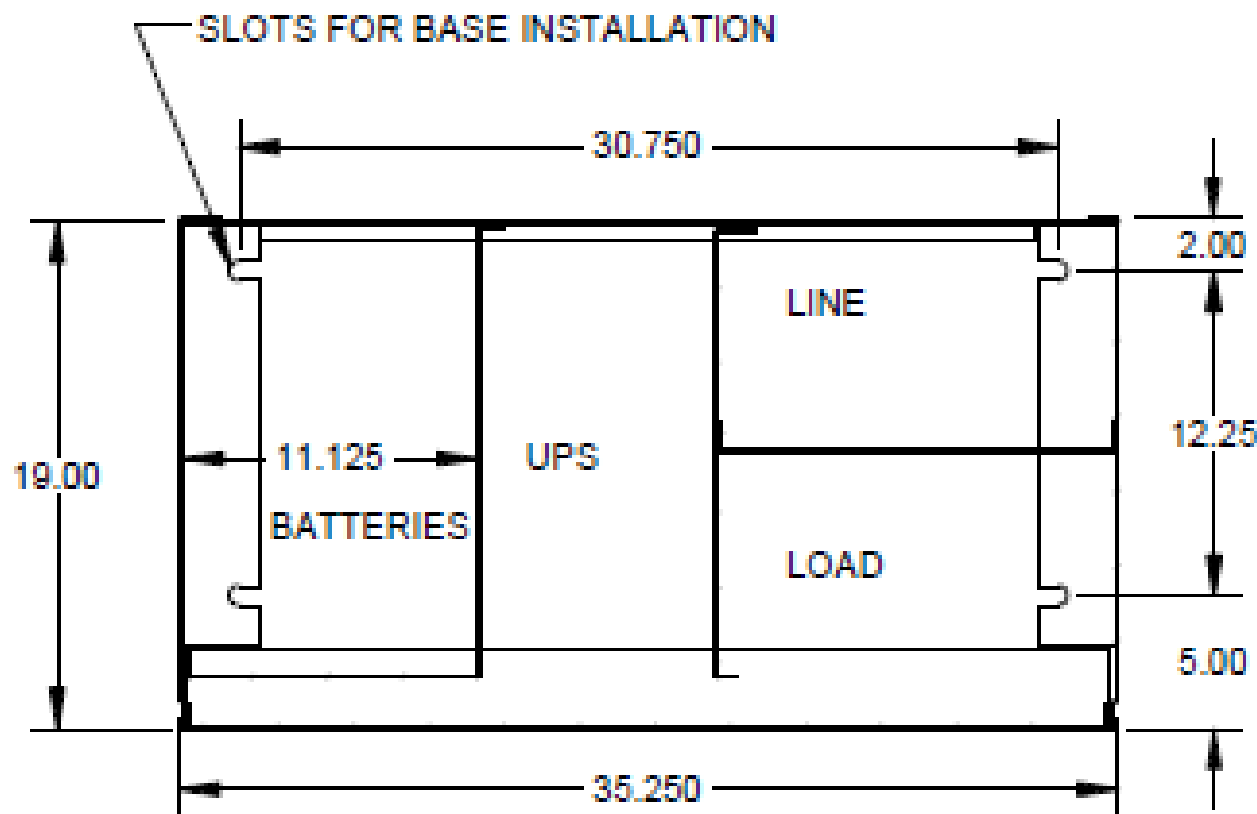
GENERATOR BYPASS SWITCH

UPS MANUAL BYPASS



Material:			 <b>MILBANK</b> MANUFACTURING CO.		General Offices: Kansas City, MO	
Finish:			Title:			
Tolerances: Unless Specified Otherwise XX ±.1 XXX ±.03 XXXX ±.015 X* ±2"			Third Angle  Projection		Catalog No.:	
			Ref:			
Scale: NTS			Checked By:		Drawing No.: <b>CP3B2212WLAOUSP</b>	
Drawn By:			Approved By:		Date: 03-29-11 Sheet 1 of 3	

# CP3B62C2PLAOMO1



SECTION A-A  
SCALE 1 : 16

PEDESTAL PLAN VIEW  
MOUNTING SLOT DETAIL