



GLOBAL ENVIRONMENTAL PRODUCTS, INC.  
5405 INDUSTRIAL PARKWAY  
SAN BERNARDINO, CA 92407

Proposal for:

**Tom Veasman**  
**Senior General Service Specialist**

**Missouri Department of Transportation**  
**General Services Division**  
**830 MoDOT Drive**  
**Jefferson City, MO 65109**

**MAKE: Global**  
**MODEL: M3**  
**Three Wheel High Dump Street Sweeper Specification**  
**Item#3**

Presented By:  
Sebastian Mentelski  
May 13th, 2016



[www.globalsweeper.com](http://www.globalsweeper.com)

**GLOBAL ENVIRONMENTAL PRODUCTS**

5405 Industrial Parkway  
San Bernardino, CA 92407

Phone: (909) 713-1600

Fax: (909) 713-1613

May 13<sup>th</sup>, 2016

TOM VEASMAN  
SENIOR GENERAL SERVICE SPECIALIST  
MISSOURI DEPARTMENT OF TRANSPORTATION  
GENERAL SERVICES DIVISION  
830 MODOT DRIVE  
JEFFERSON CITY, MO 65109

SUBJECT:

**BID REQUEST NUMBER: 3-160513TV -THREE WHEEL HIGH DUMP STREET SWEEPER SPECIFICAITON -ITEM# 3**  
**GLOBAL M3 NEW THREE-WHEEL PURPOSE-BUILT MECHANICAL STREET SWEEER**

DEAR MR. VEASMAN,

WE ARE PLEASED TO PROVIDE FOR YOUR REVIEW AND CONSIDERATION A QUOTATION ON NEW - **GLOBAL M3** PURPOSE BUILT MECHANICAL STREET SWEEPER. WE THANK YOU FOR THE OPPORTUNITY TO BE OF SERVICE. SHOULD YOU REQUIRE ANY ADDITIONAL INFORMATION, PLEASE FEEL FREE TO CONTACT ME AT 847-269-6917.

RESPECTFULLY,

SEBASTIAN MENTELSKI  
SALES MANAGER  
EMAIL: [SMENTELSKI@GLOBALSWEEPER.COM](mailto:SMENTELSKI@GLOBALSWEEPER.COM)  
CELL: (847) 269-6917



Global Environmental Products, Inc., Email (smentelski@globalsweeper.com)

# GLOBAL M3

## MECHANICAL BROOM SWEEPER

### SWEEPER

High Dump, Dual Gutter Broom, A/C- Heater

Hydrostatic Drive, John Deere 4045T 115 HP (86 Kw @ 2500 RPM) Tier 4(FLEX) Engine,  
Gray/White Powder Coating and In-cab Leaf Gate, ERGO SWITCH, Rear View Camera System.

**M.S.R.P.**  
**U.S. Dollar**  
**\$206,325**

### STANDARD SWEEPER EQUIPMENT

High Visibility Cab (Glass Entry Door included)	Sealed Beam Headlights
69 dBA In-Cab Noise Level	5.6 cu yd (4.3 cu meter) Hopper (Volumetric)
Dust & Weather Sealed Cab	Hopper Dump Alarm
Multi-Adjustable Suspension Seat	47" (1194 mm) dia. Gutter Brooms
Tilt & Telescoping Steering Wheel	In-Cab Gutter Broom Pressure Adjustment
Tinted Safety Windows & Windshield	Tuf-Grip Disposable Gutter Broom Segments
Left & Right Dual West Coast Mirrors	32" x 56.5" (813 mm x 1435 mm) Tube Type Pickup Broom
Windshield Wiper/Washer	58" (1473 mm) Wide Squeegee Type Elevator
Ergonomic Go Pedal	Two 18 gal (68 L) Hydraulic Oil Tanks
Coolant Temp, Oil Pressure & Voltmeter Gauges	Hydraulic Manifolds in LH Fender
Coolant, Eng Oil Pressure & Low Hyd Oil Warning Lights	12.5' Turning Radius with Front Suspension
Speedometer, Tachometer & Hourmeter	All 120 amp Heavy-Duty Alternator
Fuel Level Gauge	All Sheet Metal Surfaces Primer Powder Coated
220 gal (833L) Polyethylene Water Tank	Sheet Metal Surfaces Powder Coated
15' (4.6 m) Hydrant Hose with Coupling & Wrench	Standard Frame Paint Color Gray
Gutter Broom Water Spray Jets	Standard Hopper/Cab/Fenders Paint Color White
Pickup Broom Water Spray Jets	Fender Mounted Tool Box
Low Water Level Light in Cab	Front & Rear Tie Downs with Tow Hooks
Front Spray Bar	PM10 High Quality PUB (Pick Up Broom)
Buddy Seat	ERGO SWITCH STANDARD
Dual Front Tires with Front Suspension	REAR VIEW CAMERA STANDARD
Electrical Systems Locker	11 - FLIGHT Elevator System
Cab Controlled Leaf Gate system	Isolated Elevator System (Elevator Suspension)
Engine Grid Heater	1 Sweeper Service Manuals in English
Manual Safety Props	1 Sweeper Parts Manuals in English
LED Gutter Broom Spotlights	1 Sweeper Operator Manual in English
LED Stop/Tail Lights, Clearance Lights	2 Year Elevator Sprocket Warranty

### ADDITIONAL STANDARD EQUIPMENT AS SPECIFIED BY MODOT:

Remote/ Heated Mirrors	Elevator & Hopper Flusher (ILOS 322456)
Body Color Highway Yellow #13432	Automatic Lubrication System
Whelan Strobe - Cab Mounted w/ Limb guard	Ergo Switch/ Auto lift in Reverse
Main Broom Hr Meter	LCD Rear Camera System
Dual Gutter Broom Tilt	Hopper Coating
Air Ride Seat	AM/FM/CD Radio with AUX,USB Port
Front And Rear Spare Wheel & Tire	

### Terms: STANDARD WARRANTY:

**SWEEPER:** 1 Year Parts & Labor  
**Engine:** 2 Year Parts & Labor (John Deere)  
**Sprockets:** 2 Years/ **Dirt Shoes:** 1000 Hour Warranty  
**Delivery:** 90 days after receipt of order



Global Environmental Products, Inc., Email (smentelski@globalsweeper.com)

# GLOBAL M3

## MECHANICAL BROOM SWEEPER

QTY	PART NO.	DESCRIPTION	US \$ PRICE (MSRP)
<b>RECOMMENDED OPTIONS</b>			
<b>SWEEP &amp; HOPPER</b>			
1	323148	Elevator Flusher	985
1	323753	GB Speed Control	1,045
1	323743	GB Tilt, Left Single (ILOS 323742)	2,010
1	323744	GB Tilt, Right Single (ILOS 323742)	2,010
1	317335	Hopper Access Door (Include Step 325065)	2,475
1	NPN	Hopper Raise/Lower - Rear Fender Upgrade	240
1	330245-SS	Stainless Steel Hopper (Hopper Only)	9,600
1	NPN	Comfort Glide Rear Suspension / John Deere	5,990
1	323863	Triple Pump Option (ILOS 323855)	2,840
1	328100	Automatic Safety Props	3,470
1	247724	High Speed Hopper Lift/Dump	1,800
1	302193	GB Plate - BOLT ON (ILOS 301152)	270
1	329557	PUB - Strip Broom 18 Piece (ILOS 329676)	468
1	NPN	Load Leveling Device	2,860
<b>CAB</b>			
1	318717	Air Restriction Ind-In Cab	375
1	323410	Precleaner, Centri Model EX-40 (ILOS 311400)	340
1	323035	Aux. Power Source + 323034 Cap	150
<b>SAFETY &amp; LIGHTING</b>			
1	325221	Arrowstick (LED)	1,440
1	325229	Strobe, Amber-Cab	420
1	310554	Strobe, Amber-Rear	408
2	247632	Rear Flashing (LED) Strobes (mounted in hyd. Towers)	475
1	324158	Front Flood Lights Dual	415
1	316607	Rear Flood Lights Rear (LED)	450
1	302224	Fire Extinguisher 2 1/2 Pound	240
1	324815	Daytime Running Lights	280
1	10891-2	Triangular Flare Kit	120
<b>MISCELLANEOUS</b>			
1	316609	In-Cab Water Tank Gauge	420
1	326517	Battery Master Shutoff	260
1	329822	Remote Grease Block - 9 positions	1,440
1	322420	Microtrap (PM-10 Option) (ILOS 322416, 329676)	1,440
1	325932	Washdown Hose 25' (7.6 m)	350
1	311700	Dual Spring PUB Suspension	360
1	NPN	5 Year/5000 Hour John Deere Warranty	3,200
<b>DEDUCT IF REQUIRED</b>			
		DEDUCT PUB- Hour Meter	(193)
		DEDUCT Elevator & Hopper Flusher (ILOS 322456)	(1,235)
		DEDUCT Dual GB Tilt (ILOS 2-323742)	(3,678)
		DEDUCT Whalen Cab Strobe (LED)	(342)
		DEDUCT Limb Guard (Cab Beacon/Strobe)	(210)
		DEDUCT Heated & Remote Controlled Mirrors with Heavy Duty Brackets (ILOS 324798)	(1,340)
		DEDUCT Seat, High Back, Air, Gray (ILOS 317052)	(850)
		DEDUCT AM/FM Radio w/ CD with Aux & USB Ports (ILOS 353605NY)	(472)
		DEDUCT Spare Wheel/Tire - Front (M3)	(1,090)
		DEDUCT Spare Wheel/Tire - Rear (M3)	(1,320)
		DEDUCT Autolube - Full System (M3)	(5,280)
		DEDUCT Hopper Coating	(3,850)
		DEDUCT STANDARD WHITE Paint	(1,470)





# GLOBAL M3

*The Global M3 3-Wheel Sweeper Sets The Standard*

- ▶ Reliable / Durable Equipment
- ▶ Innovative Engineering / Design
- ▶ Industry Leading Reputation
- ▶ Dedicated Customer Service
- ▶ Outstanding Sales Professionals
- ▶ Fast Parts and Service
- ▶ National Dealer Network



*Reliable • Affordable • Innovative*



## PERFORMANCE

- ▶ The high-performance **Global M3** has unsurpassed pick-up ability across its full 125" sweeping path, even when faced with the heaviest workloads.
- ▶ The performance matched equal-width pickup broom and elevator system eliminates choke points and improves sweep speeds.
- ▶ In-cab gutterbroom down pressure controls combine with a self-adjusting pickup broom to provide superior sweeping ability.
- ▶ The large 5.6 cubic yard hopper's ribbed design eliminates rust traps and is mid-mounted for balanced weight distribution and superior loading.

## ENGINE

- ▶ The **Global M3** comes standard with a fuel-efficient Tier 4 Flex 4-cylinder, turbocharged 115-horsepower John Deere diesel engine, largest in its class, delivering outstanding performance and reliability.
- ▶ Low-maintenance drive system with twin wheel motor design reaches road speeds up to 25 mph and handles steep grades up to 21 degrees. With smooth control at all speed, there is no need for

## HOPPER

- ▶ 5.6 cu/yd versus 3.5 cu/yd for competitive machines, increases curb miles swept between dump cycles.
- ▶ Optional stainless steel is covered by a Lifetime Warranty, ensuring the lowest Cost of Ownership with a greater re-sale value.
- ▶ The extra large hopper can be discharged into roll-off containers or dump trucks with heights up to 9' 6".
- ▶ Dumping the large 12,000 lb payload is effortless and accomplished from within the cab for increased operator safety and efficiency.

## A BALANCED SWEEPING SYSTEM

- ▶ The 58-inch wide dirt conveyor system features an overthrow design that helps to collect more debris.
- ▶ The 125-inch sweeping path offers unsurpassed pick-up ability even when handling the heaviest of workloads.
- ▶ Performance matched equal-width pickup broom and dirt conveying system delivers faster loading and sweeping speeds.
- ▶ In-cab adjustment of dirt conveyor aperture allows more efficient pick up of leaves and bulkier materials.

MADE IN USA 

## ▶ PERFORMANCE. SAFETY. RELIABILITY. AFFORDABLE.

The **Global M3** three-wheel sweeper sets the standard. Purpose-built design with reliability, safety, low maintenance, ease of use, and the lowest operating cost per swept mile. These are the fundamental attributes of this high-performance street sweeping machine.

## ▶ THE BEST THREE-WHEEL SWEEPER IN THE INDUSTRY

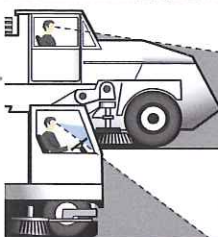
The inherent design of the **Global M3** makes it the logical choice among 3-wheel mechanical sweepers. With the center mounted/cab forward layout, the operator has unsurpassed visibility of the road surface as well as pedestrians and automotive traffic. The industry leading hopper size provides more lane miles swept between dump cycles and 12.5 foot turning radius makes the **Global M3** highly efficient and comfortable to operate.

## EXCEPTIONAL VISIBILITY



**Global M3** versus old style three-wheel depth of visibility.

ABOVE Industry leading exceptional visibility increases operator and pedestrian safety over competition.



BELOW Rear view camera with In-Cab 7" LCD Monitor is standard on every Global Street Sweeper.



BELOW Huge 47" gutterbroom versus 36" for the competition. Aggressive forward-facing digger design.



**DUST SUPPRESSION SYSTEM**  
230 Gallon Corrosion Resistant Water Tank \* 2 Water Pumps rated at 3.5GPM @ 45Psi

The **Global M3** offers the best maneuverability in its class

BELOW Elevator Type: 11 Flight squeegee with replaceable corded rubber tips; Continuous molded rubber belts. Hydraulic Motor: Direct drive: Variable Forward and Reverse; Displacement - 15.8 cu. in./rev. 5.6 cu/yd hopper capacity compared to 3.5 cu/yd for competitive machines resulting in more curb miles swept between dump cycles.



ABOVE Optional Front Articulating brush allows for extra reach to shoulders and center islands. Via In-cab joystic, the articulating front brush can be positioned on left or right side allowing for sweeping on right or left without changing seating positions.



ABOVE Polyurethane Dirt Shoes will never damage while sweeping and last well above 1000 hours



## ► THE PERFORMANCE YOU NEED

Performance matched pickup broom and dirt-conveying system delivers faster loading and sweeping speeds. The purpose-built chassis is based on four decades of experience designing most effective, and safe, street sweepers in the industry. Unmatched visibility increases safety by providing drivers a much larger viewing area, while parabolic mirrors offer a depth of view unequaled by any other street sweeper in its class.

## ► SAFETY IN DESIGN

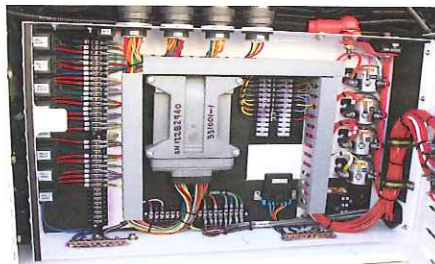
Exceptional visibility, incredible turning radius, low center of gravity, and dual front wheel design provide greater stability and effectively reduce the chance of a rollover compared to other three wheel sweepers.

## SIMPLY MAINTAINABLE

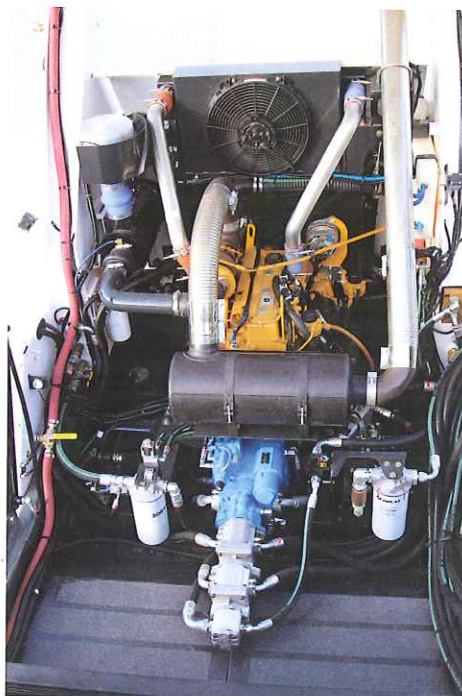


ABOVE The **Global M3** is designed to make routine maintenance easy, so your sweeper spends more time on the street and less time in the garage. Two swing-out center body panels provide unrestricted access for elevator adjustment, maintenance and daily cleaning.

BELOW A centralized, weatherproof systems locker fully protects electrical components from the elements while it allows maintenance staff easy accessibility for inspection and troubleshooting.



ABOVE The **Global M3** features many maintenance-friendly attributes, such as a rear swing-out radiator, easy access front mounted AC condenser, brake and windshield washer fluid reservoirs, and cab fresh air filter.



## OUTSTANDING AGILITY

- **Global M3** features front wheel steering and handles like a car, moving in, out and around parked vehicles with ease and agility.
- The **Global M3's** low center of gravity and front - wheel design provides greater stability than rear steer 3 - wheel sweepers that have been prone to roll-over accidents.

## EXCEPTIONAL VISIBILITY

- Increases operator and pedestrian safety.
- The **Global M3** offers the best operator visibility of any three-wheel street sweeper on the market.
- Front-and-center cab location provides unobstructed views of the street, curb and gutter brooms at all times.
- Maximum visibility means increased sweeping efficiency, better operator effectiveness and faster, safer sweeping performance.

## COMFORT AND CONVENIENCE TO REDUCE OPERATOR FATIGUE

- Inside the **Global M3**, the operator is afforded every comfort and convenience to reduce fatigue and increase productivity.
- An ergonomically designed instrument panel and suspension seat provide superior ride comfort, resulting in reduced operator fatigue.
- The forward control cab, with over **4,000** square inches of tinted safety glass, provides operator with superior visibility.
- Fingertip controls activate climate zone features such as heater, defroster and air conditioning.
- Parabolic mirrors and side window defrosters make it easy for the operator to monitor the gutterbrooms in any weather.
- Plush interior is finished with sound absorbing upholstery and door trim keeping the operator comfortable and alert.

## Global M3 OPTIONS

- All-Wheel Suspension
- Stainless Steel Hopper
- In-Cab Gutterbroom Tilt
- High-Performance Sweep Pack
- AM/FM/CD Stereo with AUX/USB
- Air-Ride Seat
- Elevator and Hopper Flusher
- Autolube System
- PM-10 Water System for improved air quality.







**Global Environmental Products Inc.** offers equipment with uncompromising performance, consistent quality, durability and reliability. Our comprehensive range of machines provide the right cleaning equipment for your application. Please contact us for a demonstration at ... (909) 713-1600.

**WWW.GLOBALSWEEPER.COM**

**Sold and Serviced by:**



**Global Environmental Products**  
5405 Industrial Parkway,  
San Bernardino, CA 92407 USA

**909-713-1600**

info@globalsweeper.com

**CUSTOMIZE YOUR SWEEPER:**

