

DESIGN DESIGNATION

MO 74

A.A.D.T. - 2012 = 10200

A.A.D.T. - 2032 = 12420

D.H.V. = 9%

T = 18%

V = 45 M.P.H.

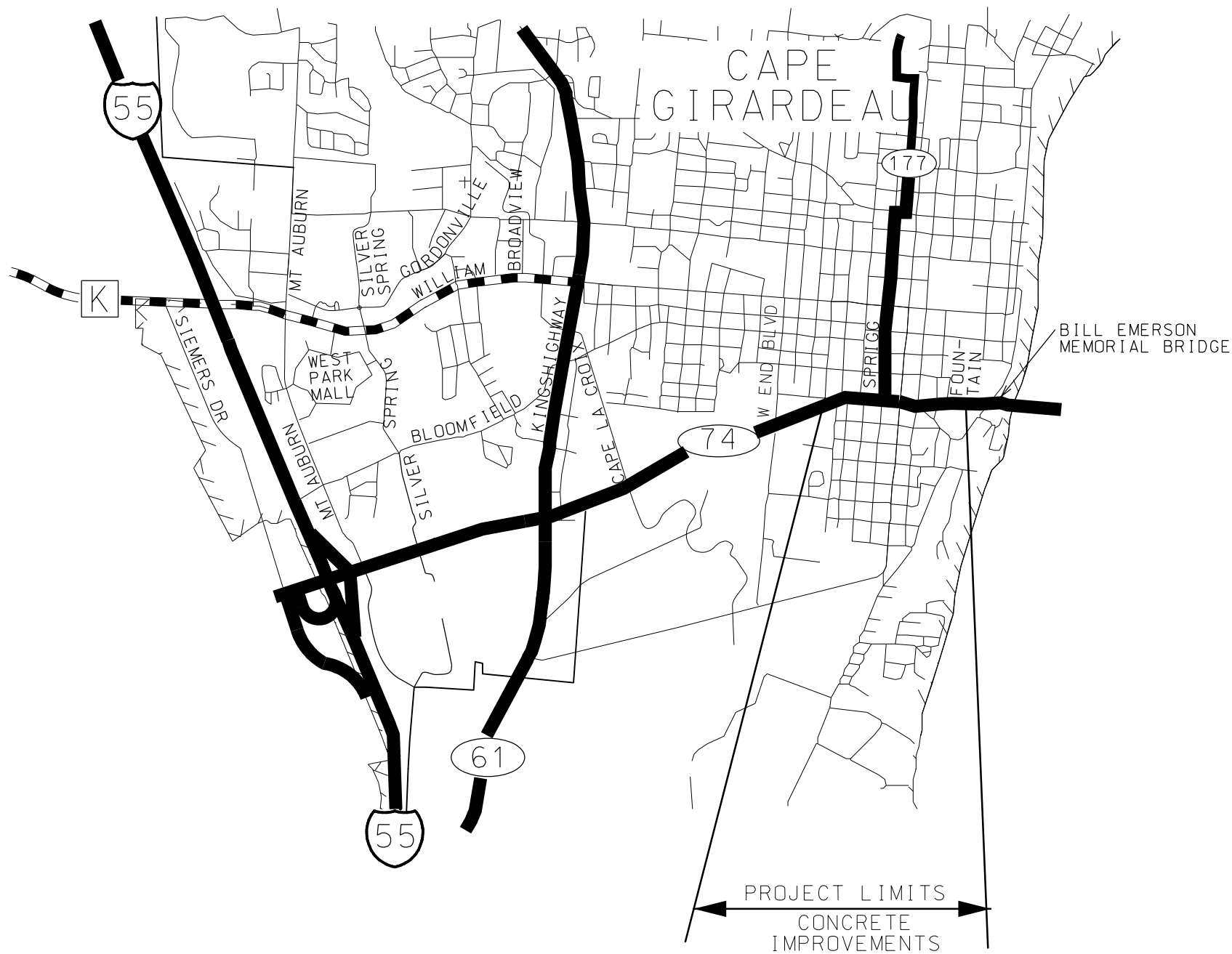
FUNCTIONAL CLASSIFICATION-FREWAY/EXPRESSWAY

MISSOURI HIGHWAYS AND TRANSPORTATION COMMISSION

PLANS FOR PROPOSED

STATE HIGHWAY

CAPE GIRARDEAU COUNTY



INDEX OF SHEETS

DESCRIPTION	SHEET NUMBER
TITLE SHEET -----	1
PLAN (PP)-----	2-6
SPECIAL SHEETS (SS)-----	7-11
TRAFFIC CONTROL (TC)-----	12

"THIS MEDIA SHOULD NOT BE CONSIDERED A CERTIFIED DOCUMENT."

DATE PREPARED
9/24/2013

ROUTE 74	STATE MO
DISTRICT SE	SHEET NO. 1

COUNTY
CAPE GIRARDEAU
JOB NO.

CONTRACT ID.

PROJECT NO.

BRIDGE NO.

DESCRIPTION

DATE

MISSOURI HIGHWAYS AND TRANSPORTATION COMMISSION



LENGTH OF PROJECT

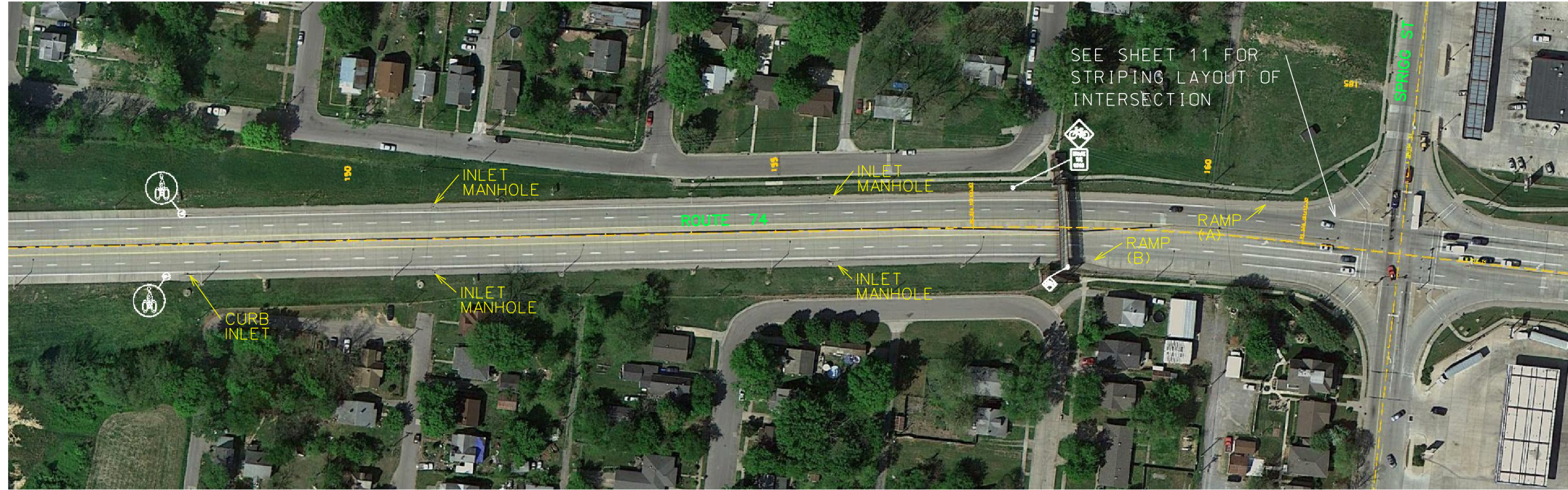
MO 74 (SHAWNEE PKWY)

BEGINNING OF PROJECT STA. 14+75.00

END OF PROJECT STA. 182+35.00

APPARENT LENGTH 16760 FEET

WORK LOCATIONS WEST OF SPRIGG ST



NOTE: SEE SHEET 8 FOR RAMP DETAILS AND INLET DETAILS.

THIS SHEET FOR LOCATING CONCRETE WORK LOCATIONS ONLY. SEE SHEET 11 FOR STRIPING DETAILS AND SHEET 6 FOR SIGNING AND ADDITIONAL STRIPING DETAILS.

WORK LOCATIONS EAST OF SPRIGG ST



CONCRETE WORK
SPECIAL SHEET
SHEET 1 OF 5

"THIS MEDIA SHOULD NOT BE CONSIDERED A CERTIFIED DOCUMENT."

DATE PREPARED

ROUTE 74 STATE MO

DISTRICT SE SHEET NO. 7

COUNTY CAPE GIRARDEAU JOB NO.

CONTRACT ID.

PROJECT NO.

BRIDGE NO.

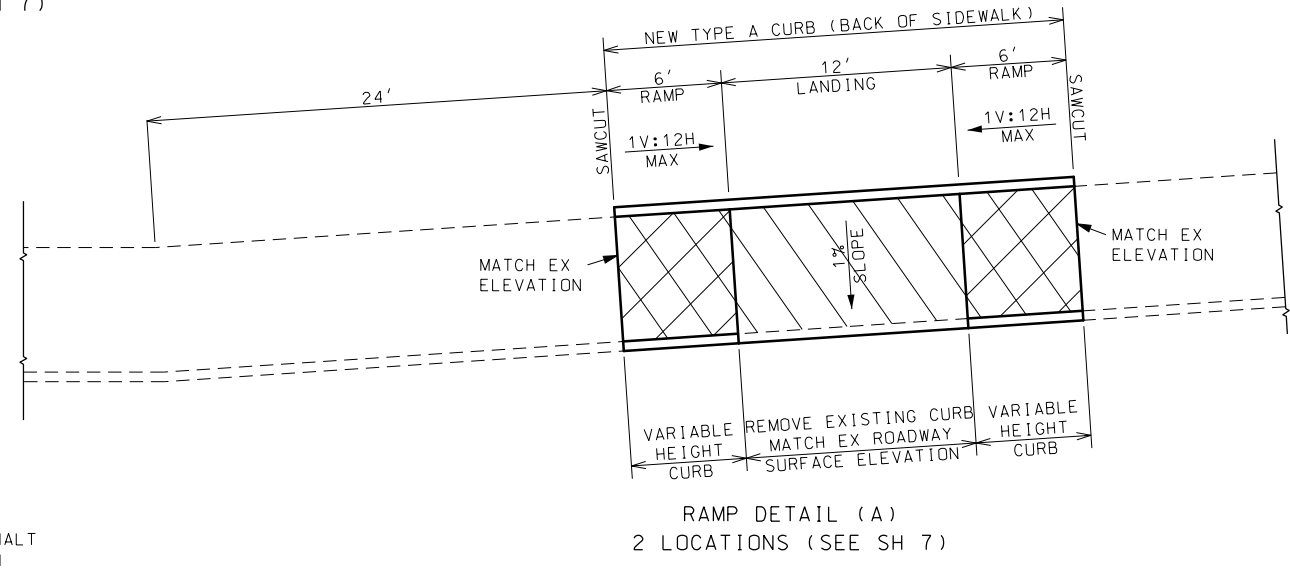
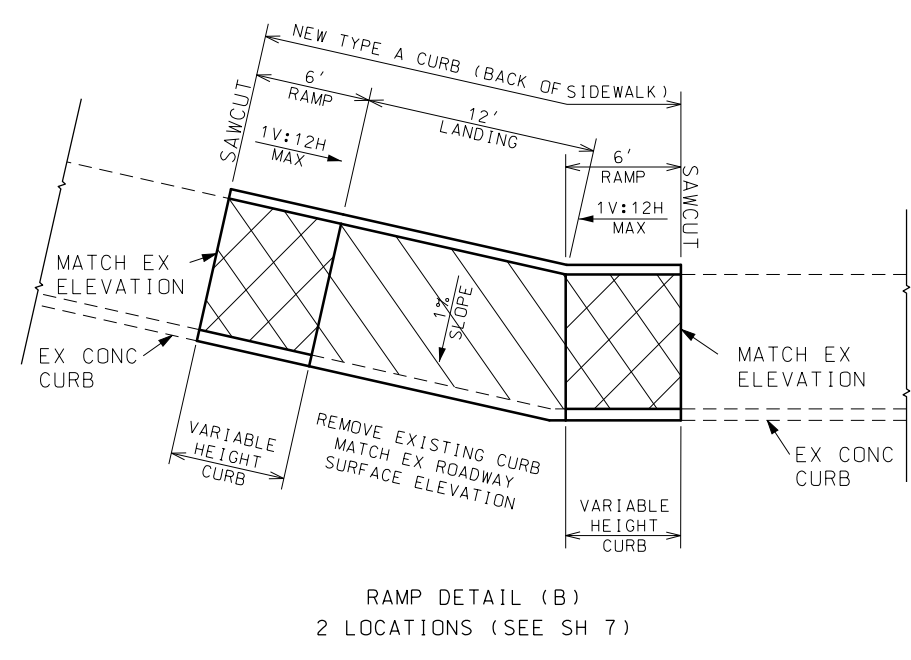
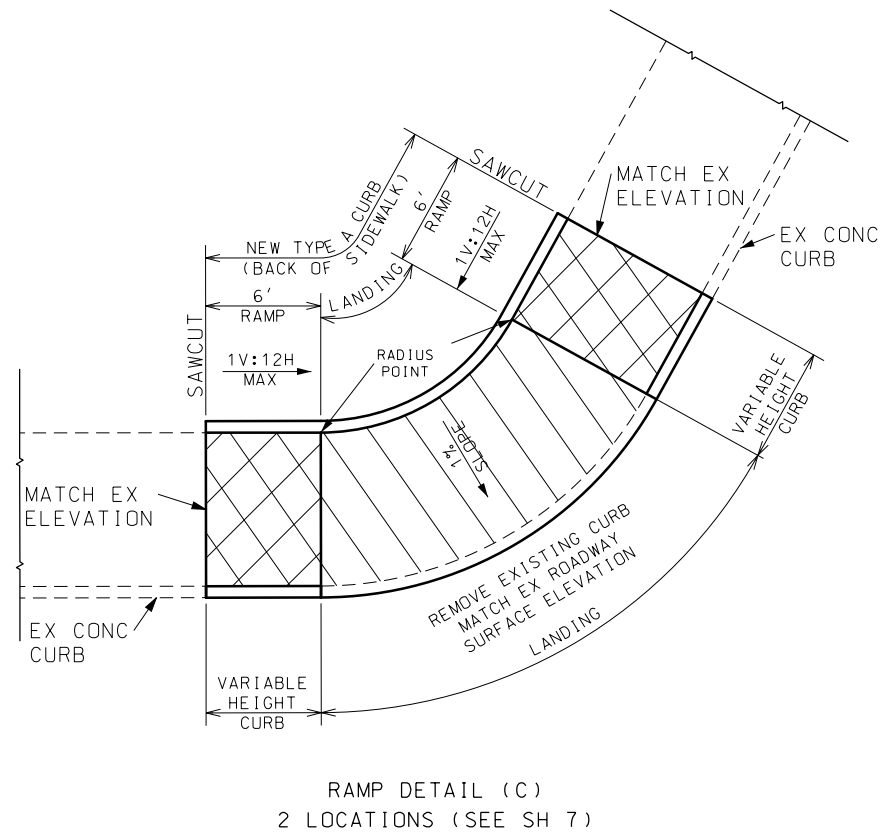
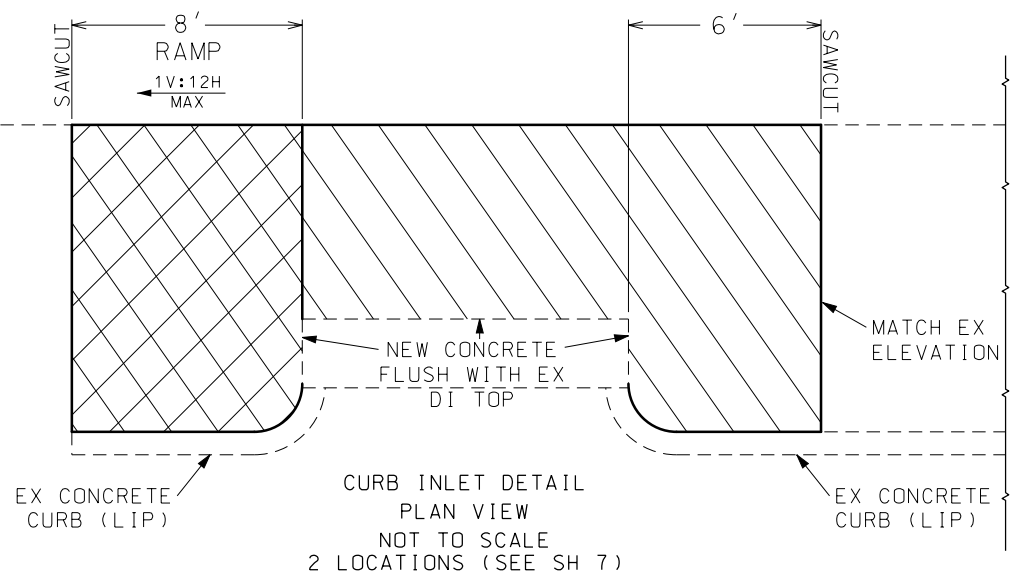
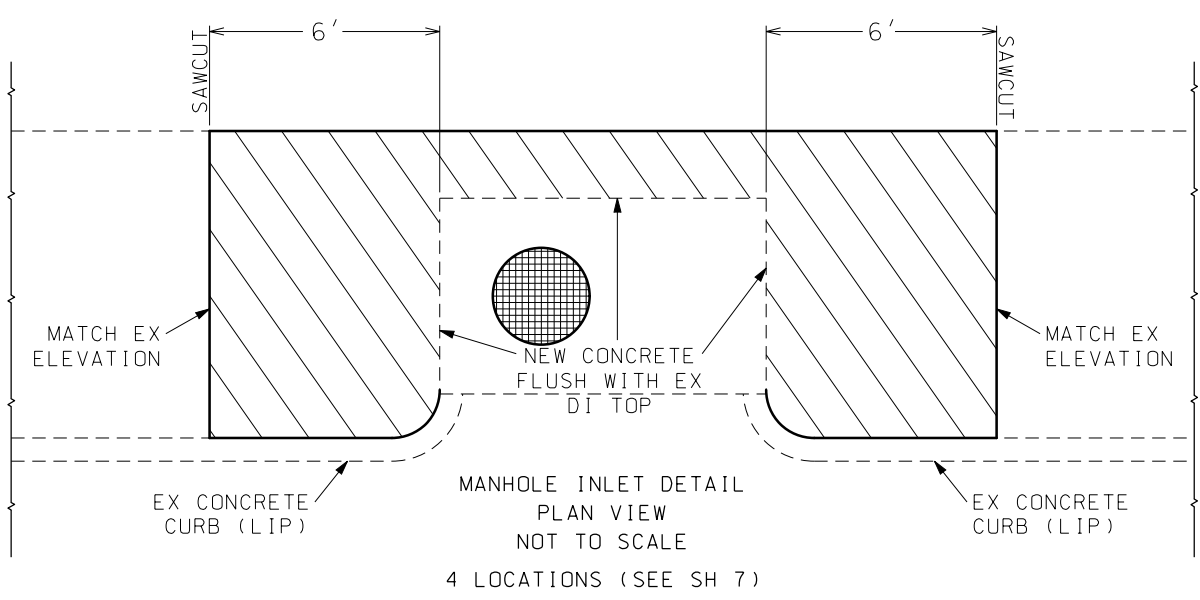
DESCRIPTION

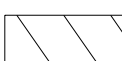

DATE

MISSOURI HIGHWAYS AND TRANSPORTATION COMMISSION


105 WEST CAPITOL JEFFERSON CITY, MO 65102 1-888-ASK-MODOT (1-888-275-6636)

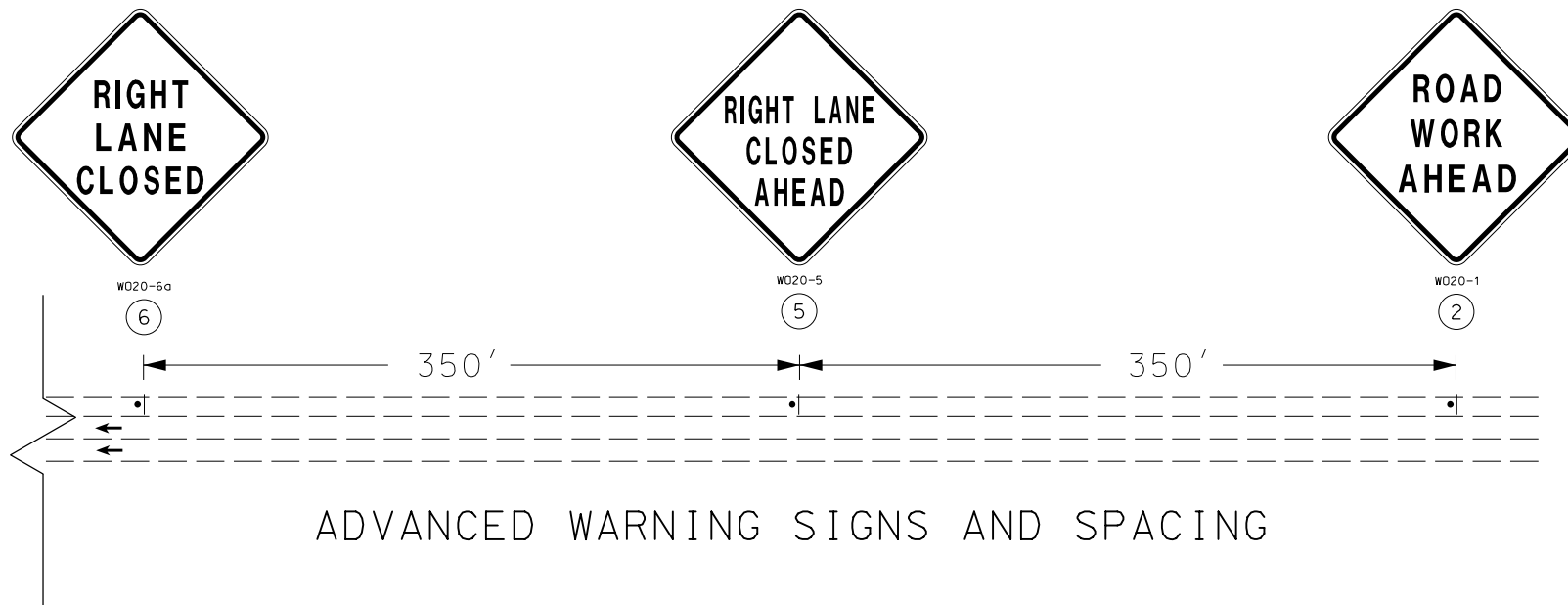
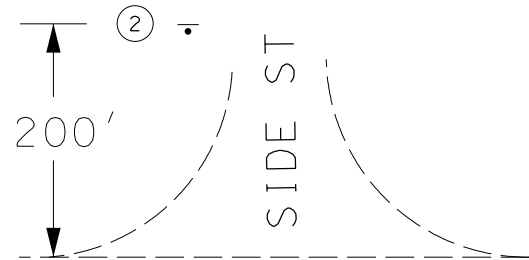




 REMOVE EXISTING ASPHALT SURFACE REPLACE WITH 4" CONCRETE
 RAMP

"THIS MEDIA SHOULD NOT BE CONSIDERED A CERTIFIED DOCUMENT."

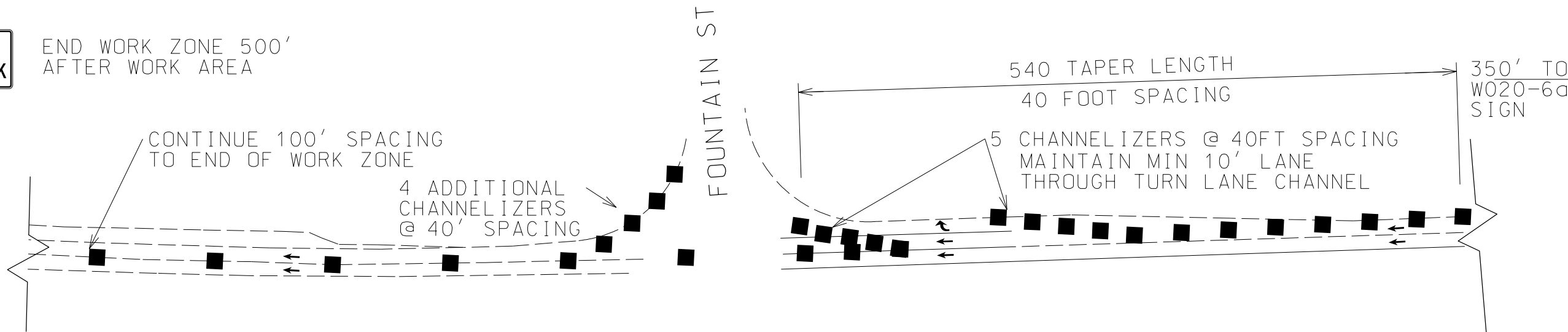
DATE PREPARED 9/25/2013	
ROUTE 74	STATE MO
DISTRICT SE	SHEET NO. 8
COUNTY CAPE GIRARDEAU	
JOB NO.	
CONTRACT ID.	
PROJECT NO.	
BRIDGE NO.	
DESCRIPTION	DATE
MISSOURI HIGHWAYS AND TRANSPORTATION COMMISSION	 105 WEST CAPITOL JEFFERSON CITY, MO 65102 1-888-ASK-MODOT (1-888-275-6636)



END ROAD WORK

G020-2
②⑥

END WORK ZONE 500'
AFTER WORK AREA

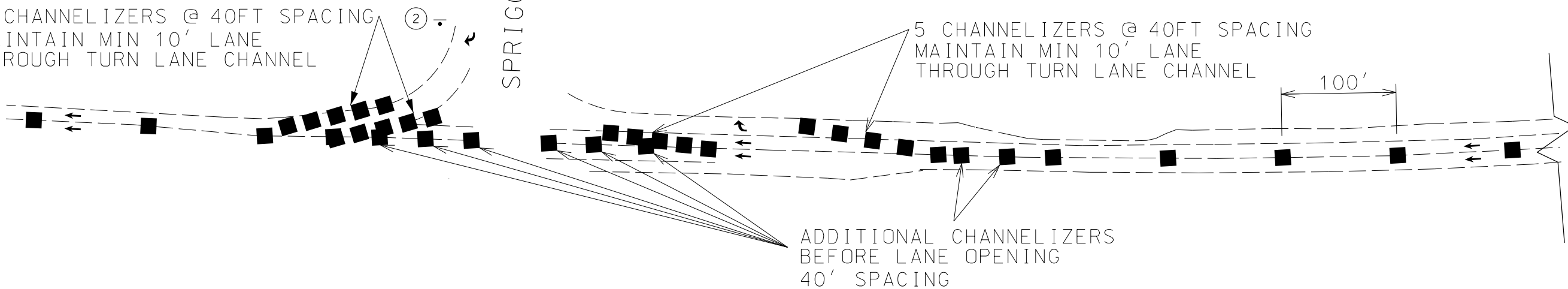


CHANNELIZER SPACING DETAILS

5 CHANNELIZERS @ 40FT SPACING
MAINTAIN MIN 10' LANE THROUGH TURN LANE CHANNEL

②

SPRIGG ST



"THIS MEDIA SHOULD NOT BE CONSIDERED A CERTIFIED DOCUMENT."

DATE PREPARED 9/24/2013	
ROUTE 74	STATE MO
DISTRICT SE	SHEET NO. 12
COUNTY CAPE GIRARDEAU	
JOB NO.	
CONTRACT ID.	
PROJECT NO.	
BRIDGE NO.	
DESCRIPTION	DATE
MISSOURI HIGHWAYS AND TRANSPORTATION COMMISSION	105 WEST CAPITOL JEFFERSON CITY, MO 65102 1-888-ASK-MODOT (1-888-275-6636)

IF A SEAL IS PRESENT ON THIS SHEET IT HAS BEEN ELECTRONICALLY SEALED AND DATED.