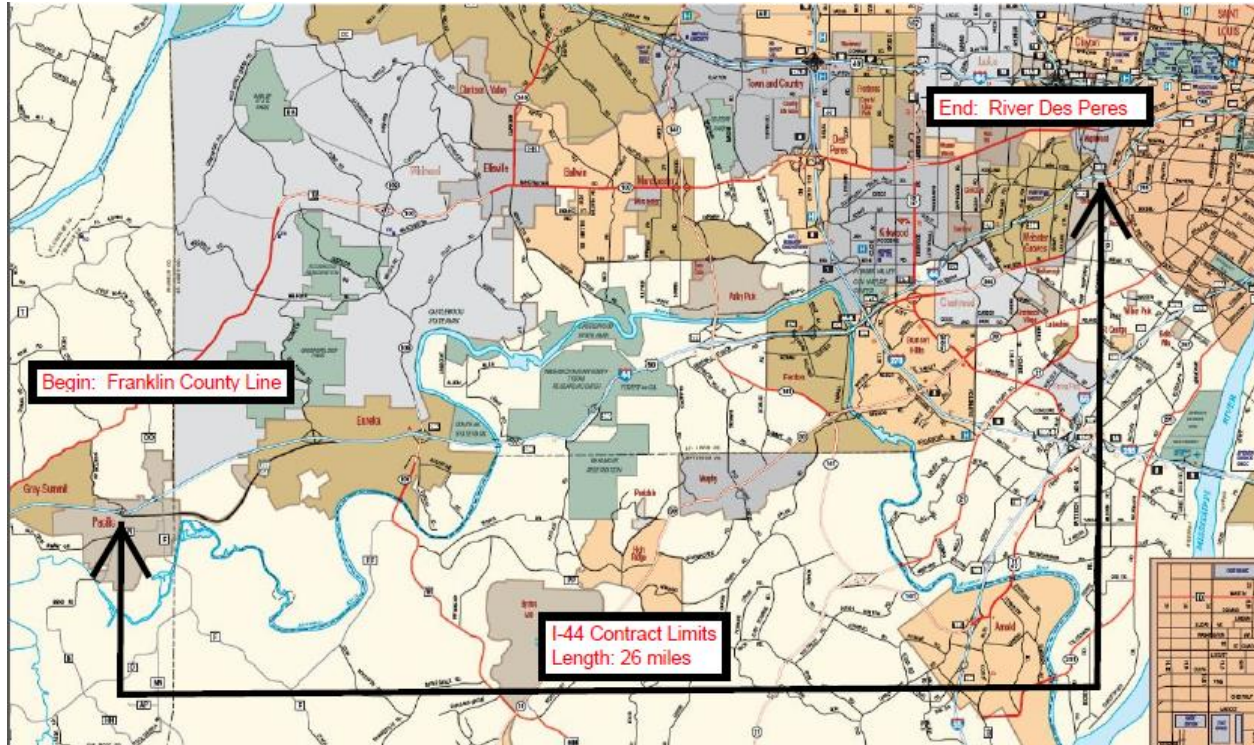


## Contract Limits and Location Sketch

SL17-069-R7



### Contract Term and Extension

Initial Contract Term: Commencing [April 18, 2017](#) and shall terminate [November 30, 2017](#)  
First Extended Term: Commencing [April 1, 2018](#) and shall terminate [November 30, 2018](#)  
Second Extended Term: Commencing [April 1, 2019](#) and shall terminate [November 30, 2019](#)

### Contract Limits and Exclusions

[See attached display for mowing areas.](#)

### Mowing and Litter Removal Cycles

[4 mowing and litter removal cycles are anticipated](#)

### Mowing Quantities

The quantities shown are the total estimated acres to be mowed during one contract term if all areas are mowed and the anticipated number of mowing cycles are authorized.

The quantities are calculated as follows:

**TOTAL AREA PER REGULAR MOWING CYCLE (APPROXIMATE): [216.01 ACRES](#)**  
**TOTAL AREA PER FULL MOWING CYCLE (APPROXIMATE): [242.10 ACRES](#)**

Total Area in Contract Limits (Acres)	X	Number of Mowing Cycles During Contract Term	=	Total Mowing Quantity During Contract Term (Acres)
<a href="#">216.01</a>	X	<a href="#">3</a>	=	<a href="#">648.03</a>
<a href="#">242.10</a>	X	<a href="#">1</a>	=	<a href="#">242.10</a>

**[TOTAL CONTRACT QUANTITY – MOWING: 890.13 ACRES](#)**

### Litter Removal Quantities

In accordance with the contract specifications the litter removal area is presumed to be equal to the mowing area.

Total Area in Contract Limits (Acres)	X	Number of Litter Removal Cycles During Contract Term	=	Total Litter Removal Quantity During Contract Term (Acres)
216.01	X	3	=	648.03
242.10	X	1	=	242.10

**TOTAL CONTRACT QUANTITY – LITTER REMOVAL: 890.13 ACRES**

### Contract Time for Completion of Work

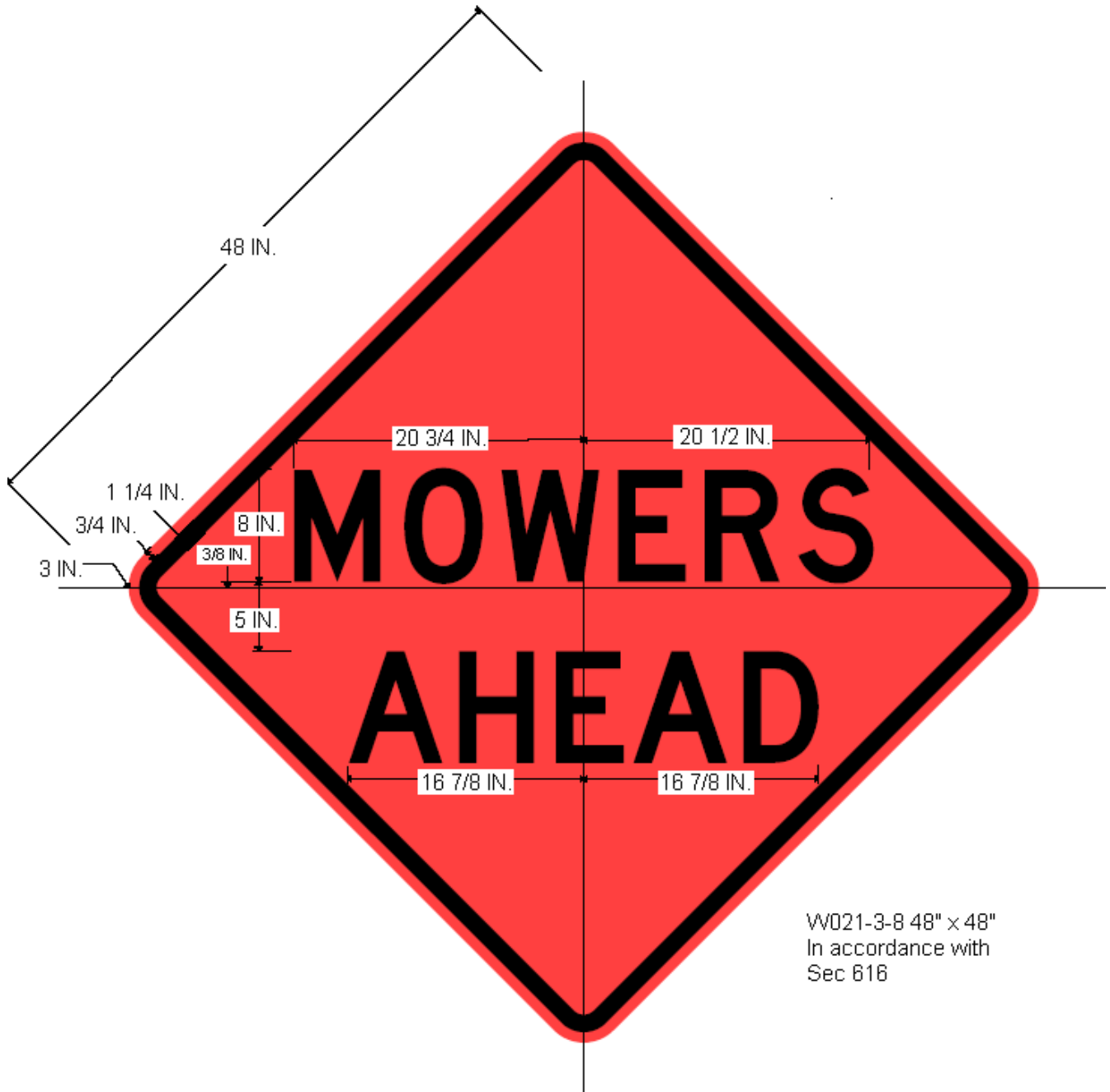
The contractor shall complete all work required through the entire contract limits within the working days specified below after the notice to proceed date.

**Mowing Cycle with Litter Removal Cycle:**  
216.01 Acre Cycle: 16 Working Days  
242.10 Acre Cycle: 17 Working Days

### Mowing Height & Special Equipment

- 1) Mowing equipment shall have a minimum adjustable height of 3 to 8 inches.
- 2) No special equipment or equipment restrictions are required for this contract.
- 3) All grass and vegetation shall be cut and trimmed to a height of six (6) inches unless otherwise directed by the engineer.

**Special Sign Detail**



W021-3-8 48" x 48"  
In accordance with  
Sec 616

**COLOR**

Legend & Border – Black  
Background – Orange

**SHEETING**

MoDOT Florescent Orange