

DESIGN DESIGNATION

A.A.D.T. - 2016 = 114074

D.H.V. = 14%
 T = 18%
 V = 55 M.P.H.
 D = 48%

FUNCTIONAL CLASSIFICATION- INTERSTATE

**NO ADDITIONAL
 RIGHT OF WAY NEEDED**

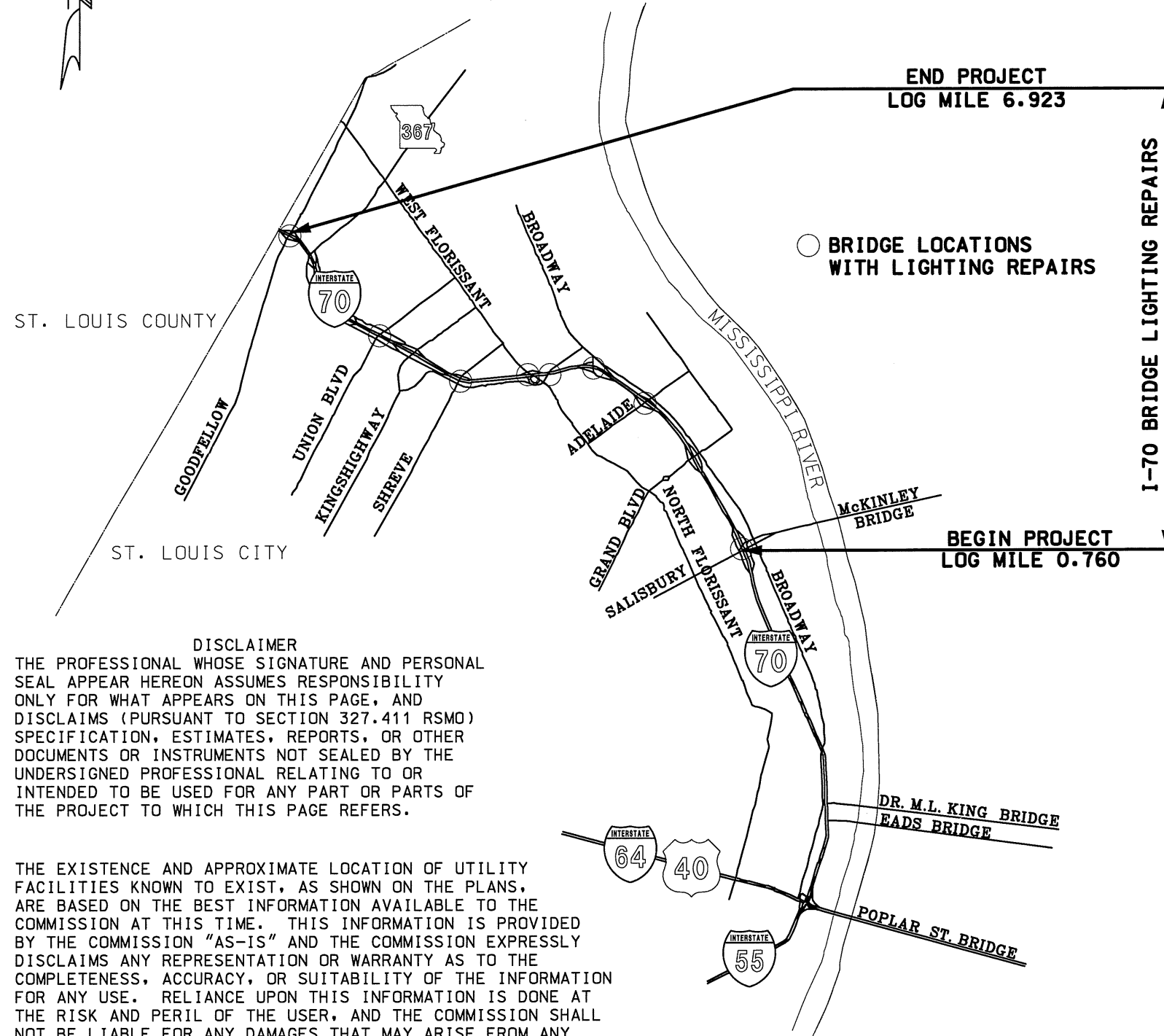
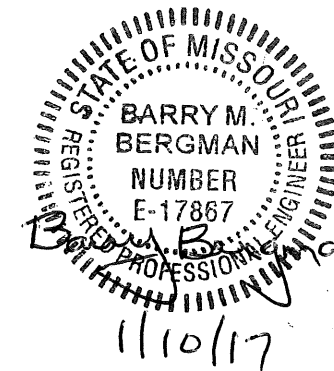
**MISSOURI HIGHWAYS AND TRANSPORTATION COMMISSION
 PLANS FOR PROPOSED
 STATE HIGHWAY
 ST. LOUIS CITY
 I-70
 (UNION BLVD TO BROADWAY ST.)
 (REVERSIBLE LANES)**

INDEX OF SHEETS

DESCRIPTION	SHEET NUMBER
TITLE SHEET	1
QUANTITIES (QU) (2 SHEETS)	3
PLAN-PROFILE (PP)	4-5
TRAFFIC CONTROL SHEETS (TC)	6-11

"THIS MEDIA SHOULD NOT BE CONSIDERED A CERTIFIED DOCUMENT."

DATE PREPARED 12/19/2016	
ROUTE I-70	STATE MO
DISTRICT SL	SHEET NO. 1
COUNTY ST. LOUIS CITY	
JOB NO. WRS1070A	
CONTRACT ID.	
PROJECT NO.	
BRIDGE NO.	



○ BRIDGE LOCATIONS WITH LIGHTING REPAIRS

I-70 BRIDGE LIGHTING REPAIRS

END PROJECT
LOG MILE 6.923

BEGIN PROJECT
LOG MILE 0.760

**CONVENTIONAL SYMBOLS
 (USED IN PLANS)**

	EXISTING	NEW
BUILDINGS AND STRUCTURES		
GUARD RAIL		
CONCRETE RIGHT-OF-WAY MARKER		
STEEL RIGHT-OF-WAY MARKER		
LOCATION SURVEY MARKER		
UTILITIES		
FIBER OPTICS		
OVERHEAD TELEPHONE		
UNDERGROUND TELEPHONE		
OVERHEAD POWER		
UNDERGROUND POWER		
GAS		
WATER		
MANHOLE		
FIRE HYDRANT		
WATER VALVE		
WATER METER		
DROP INLET		
DITCH BLOCK		
GROUND MOUNTED SIGN		
LIGHT POLE		
H-FRAME POWER POLE		
TELEPHONE PEDESTAL		
FENCE		
CHAIN LINK		
WOVEN WIRE		
GATE POST		
BENCHMARK		

DISCLAIMER
 THE PROFESSIONAL WHOSE SIGNATURE AND PERSONAL SEAL APPEAR HEREON ASSUMES RESPONSIBILITY ONLY FOR WHAT APPEARS ON THIS PAGE, AND DISCLAIMS (PURSUANT TO SECTION 327.411 RSMO) SPECIFICATION, ESTIMATES, REPORTS, OR OTHER DOCUMENTS OR INSTRUMENTS NOT SEALED BY THE UNDERSIGNED PROFESSIONAL RELATING TO OR INTENDED TO BE USED FOR ANY PART OR PARTS OF THE PROJECT TO WHICH THIS PAGE REFERS.

THE EXISTENCE AND APPROXIMATE LOCATION OF UTILITY FACILITIES KNOWN TO EXIST, AS SHOWN ON THE PLANS, ARE BASED ON THE BEST INFORMATION AVAILABLE TO THE COMMISSION AT THIS TIME. THIS INFORMATION IS PROVIDED BY THE COMMISSION "AS-IS" AND THE COMMISSION EXPRESSLY DISCLAIMS ANY REPRESENTATION OR WARRANTY AS TO THE COMPLETENESS, ACCURACY, OR SUITABILITY OF THE INFORMATION FOR ANY USE. RELIANCE UPON THIS INFORMATION IS DONE AT THE RISK AND PERIL OF THE USER, AND THE COMMISSION SHALL NOT BE LIABLE FOR ANY DAMAGES THAT MAY ARISE FROM ANY ERROR IN THE INFORMATION.

NOTE: DASHED OR OPEN SYMBOLS INDICATE EXISTING FEATURES

LENGTH OF PROJECT

BEGINNING OF PROJECT	LM 0.760
END OF PROJECT	LM 6.923
APPARENT LENGTH	32540.64 FEET

EQUATIONS AND EXCEPTIONS:

TOTAL CORRECTIONS	0.00 FEET
NET LENGTH OF PROJECT	32540.64 FEET
STATE LENGTH	6.163 MILES

NOT TO SCALE

DESCRIPTION

DATE

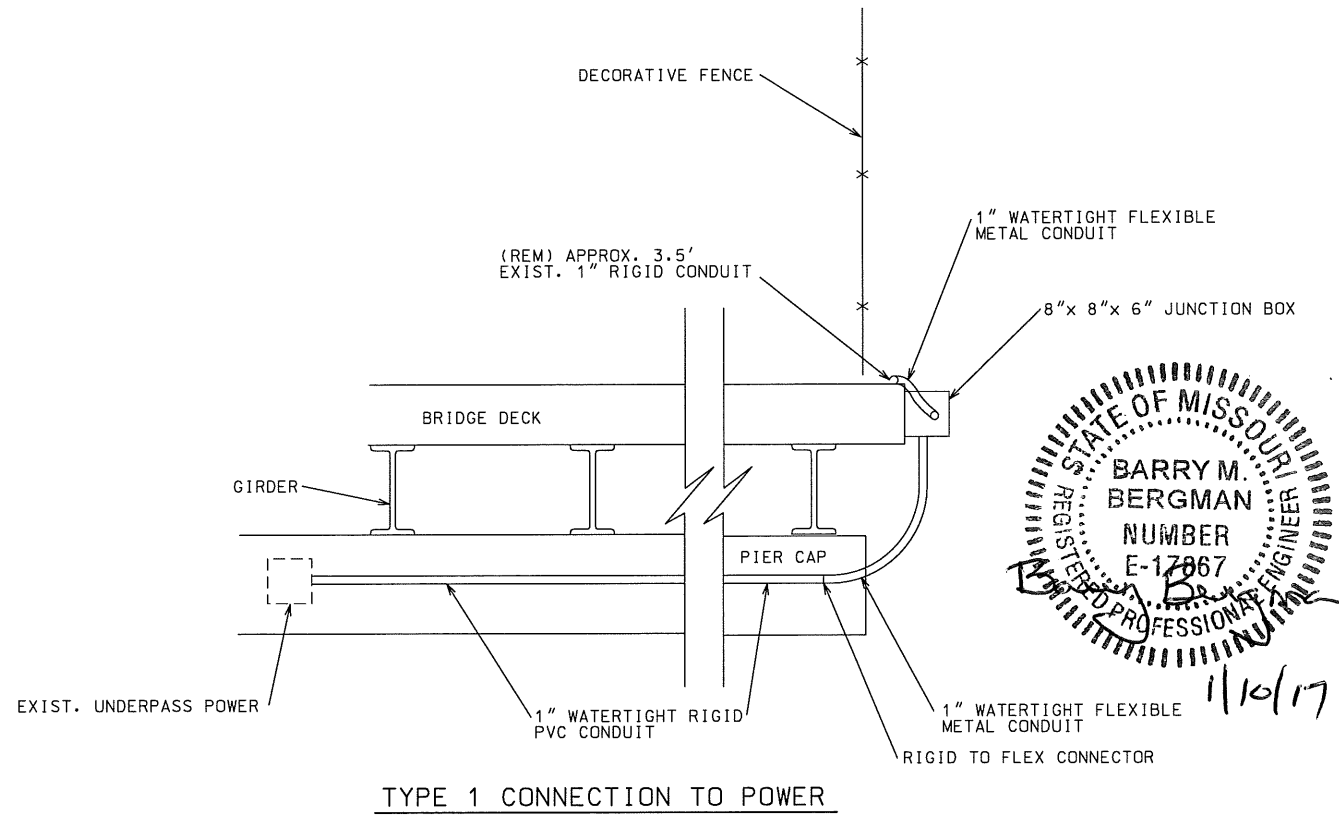
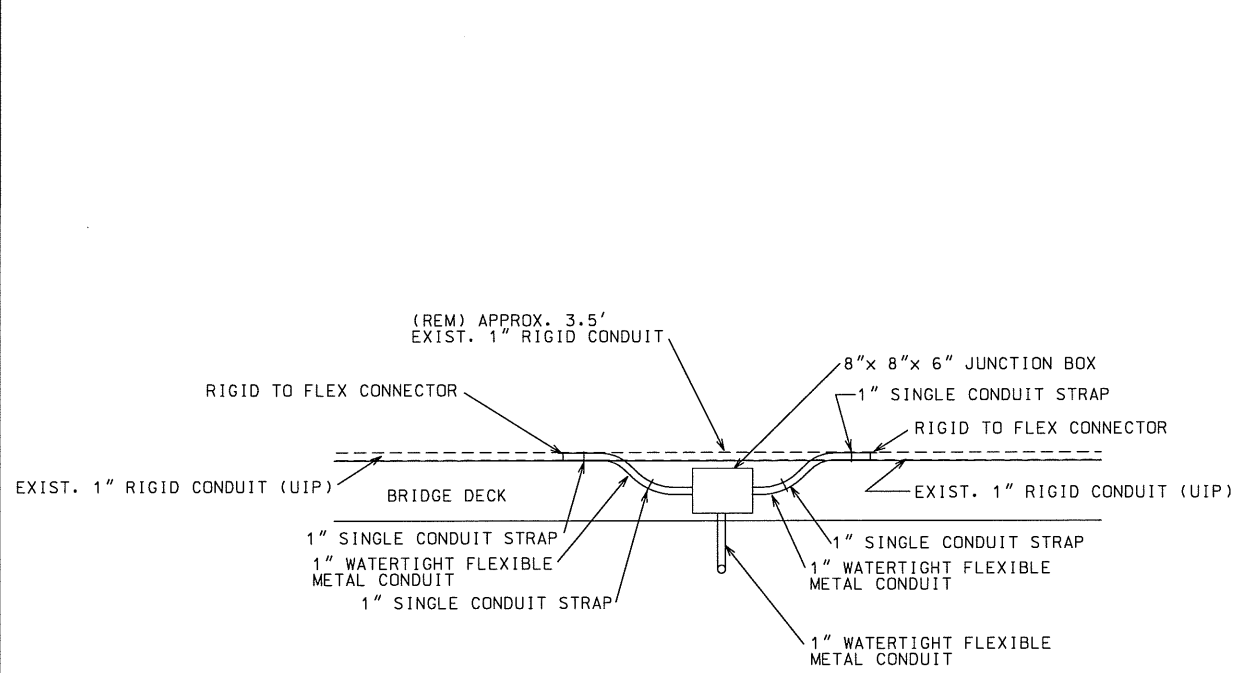
MISSOURI HIGHWAYS AND TRANSPORTATION COMMISSION



TITLE SHEET

105 WEST CAPITOL
 JEFFERSON CITY, MO 65102
 1-888-ASK-MODOT (1-888-275-6636)

IF A SEAL IS PRESENT ON THIS SHEET IT HAS BEEN ELECTRONICALLY SEALED AND DATED.



NOTE: SEE SPECIFICATION 902.16.6 FOR THE INSTALLATION OF THE EXTERNAL CONDUIT ON STRUCTURE

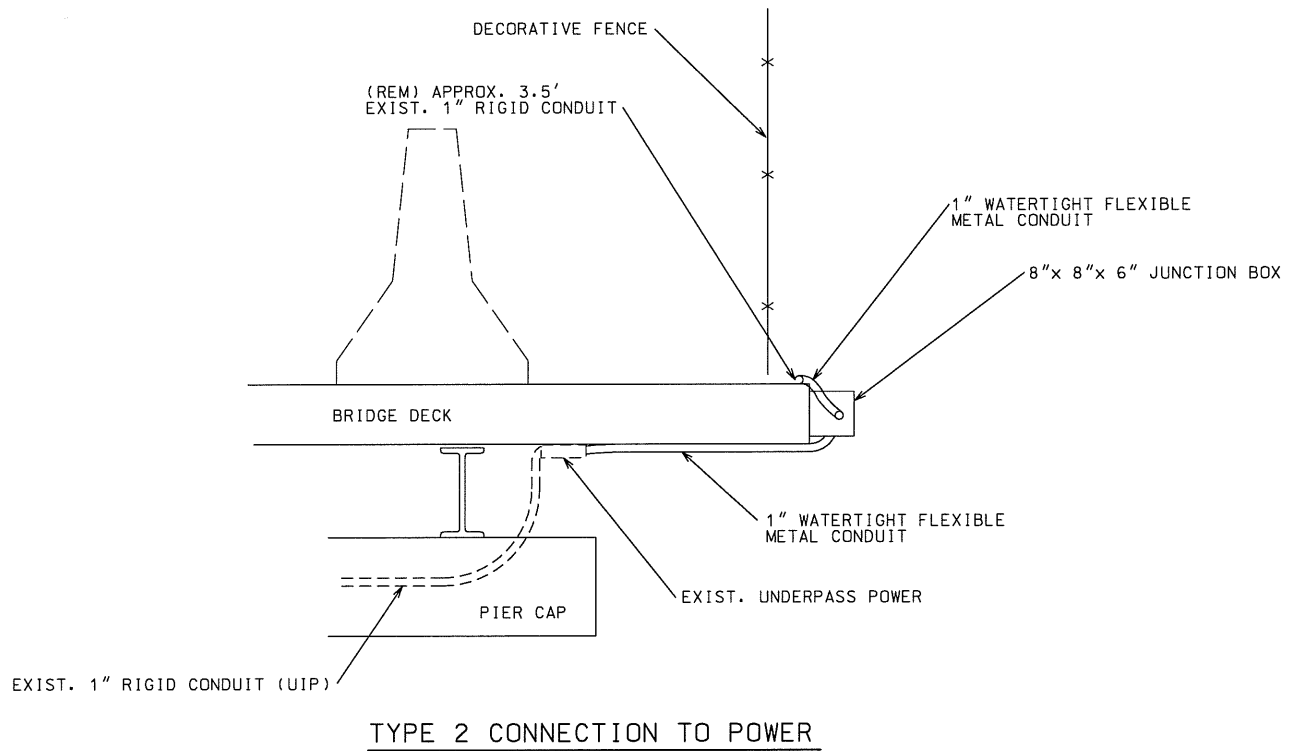
CONNECTION TO POWER - MATERIALS LISTING

TYPE 1

- (APPROX.) 30 LF - 1" WATERTIGHT RIGID PVC CONDUIT
- 1 EA - 8" x 8" x 6" METAL JUNCTION BOX
- (APPROX.) 5 EA - 1" DOUBLE CONDUIT STRAP
- 4 EA - 1" SINGLE CONDUIT STRAP
- 10 LF - 1" WATERTIGHT FLEXIBLE METAL CONDUIT
- 3 EA - 1" RIGID TO FLEX CONNECTOR

TYPE 2

- 1 EA - 8" x 8" x 6" METAL JUNCTION BOX
- 2 EA - 1" DOUBLE CONDUIT STRAP
- 4 EA - 1" SINGLE CONDUIT STRAP
- 12 LF - 1" WATERTIGHT FLEXIBLE METAL CONDUIT
- 2 EA - 1" RIGID TO FLEX CONNECTOR



CONNECTION TO POWER
UNDERPASS LIGHTING

REPAIRS INCLUDE ALL CONNECTIONS NECESSARY TO INSTALL CONDUIT AND JUNCTION BOXES. ANY OTHER ITEMS OR OPERATIONS NECESSARY FOR THIS WORK SHALL BE CONSIDERED INCIDENTAL AND INCLUDED IN THE PAY ITEMS - CONNECTION TO POWER, TYPE 1 - 1 EACH CONNECTION TO POWER, TYPE 2 - 1 EACH

"THIS MEDIA SHOULD NOT BE CONSIDERED A CERTIFIED DOCUMENT."

DATE PREPARED
12/19/2016

ROUTE I-70 STATE MO
DISTRICT SL SHEET NO. 5

COUNTY
ST. LOUIS CITY
JOB NO.
WRSI070A
CONTRACT ID.

PROJECT NO.
BRIDGE NO.

DESCRIPTION

DATE

MISSOURI HIGHWAYS AND TRANSPORTATION COMMISSION



PLAN DETAIL SHEET
SHEET 2 OF 2

IF A SEAL IS PRESENT ON THIS SHEET IT HAS BEEN ELECTRONICALLY SEALED AND DATED.

"THIS MEDIA SHOULD NOT BE CONSIDERED A CERTIFIED DOCUMENT."

DATE PREPARED
12/19/2016

ROUTE I-70 STATE MO
DISTRICT SL SHEET NO. 8

COUNTY
ST. LOUIS CITY
JOB NO.
WRS1070A
CONTRACT ID.

PROJECT NO.

BRIDGE NO.

DESCRIPTION

DATE

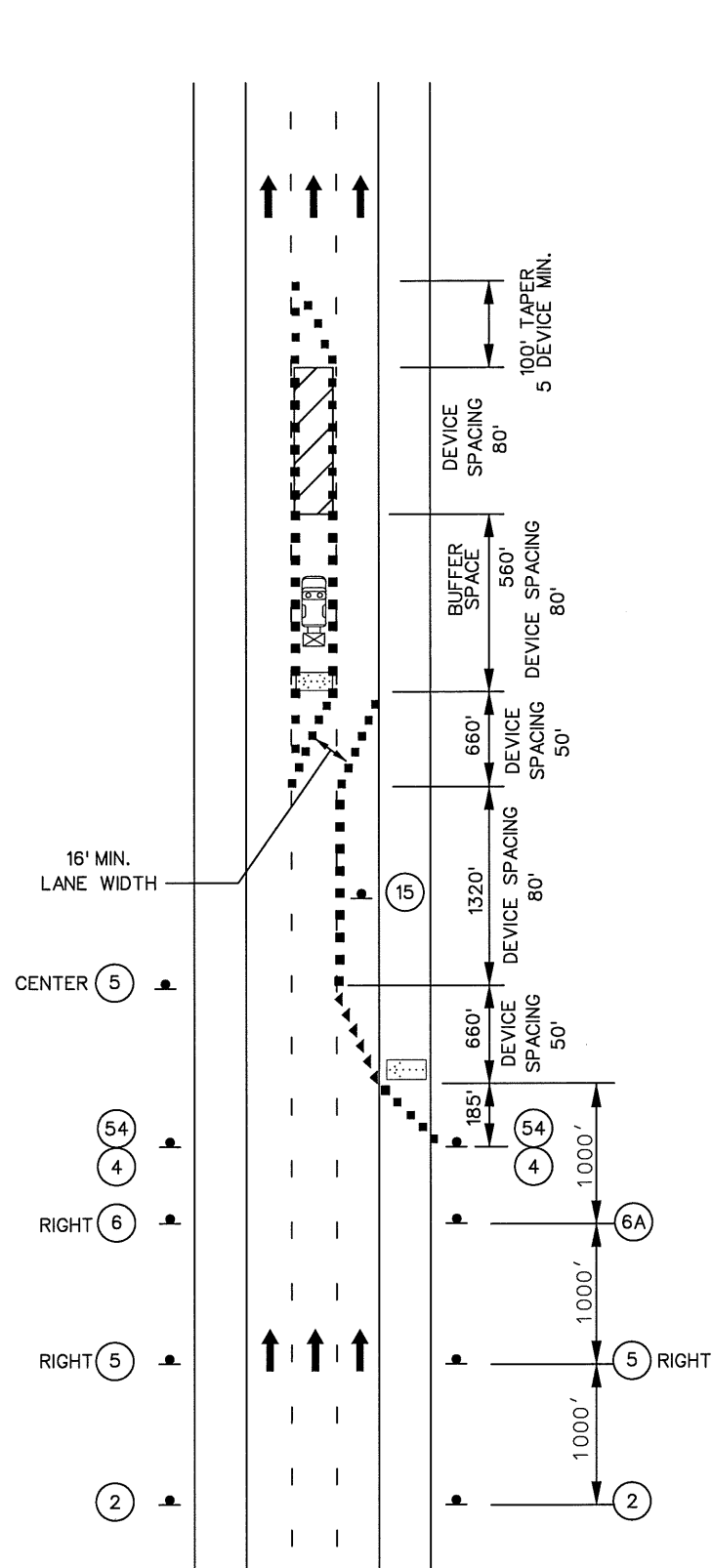
MISSOURI HIGHWAYS AND TRANSPORTATION COMMISSION



105 WEST CAPITOL JEFFERSON CITY, MO 65102
1-888-ASK-MODOT (1-888-275-6636)

TRAFFIC CONTROL SHEET
INTERIOR LANE CLOSURE
ON MULTI-LANE HIGHWAY

REV.



INTERIOR LANE CLOSURE ON MULTI-LANE HIGHWAY

TRAFFIC CONTROL LEGEND

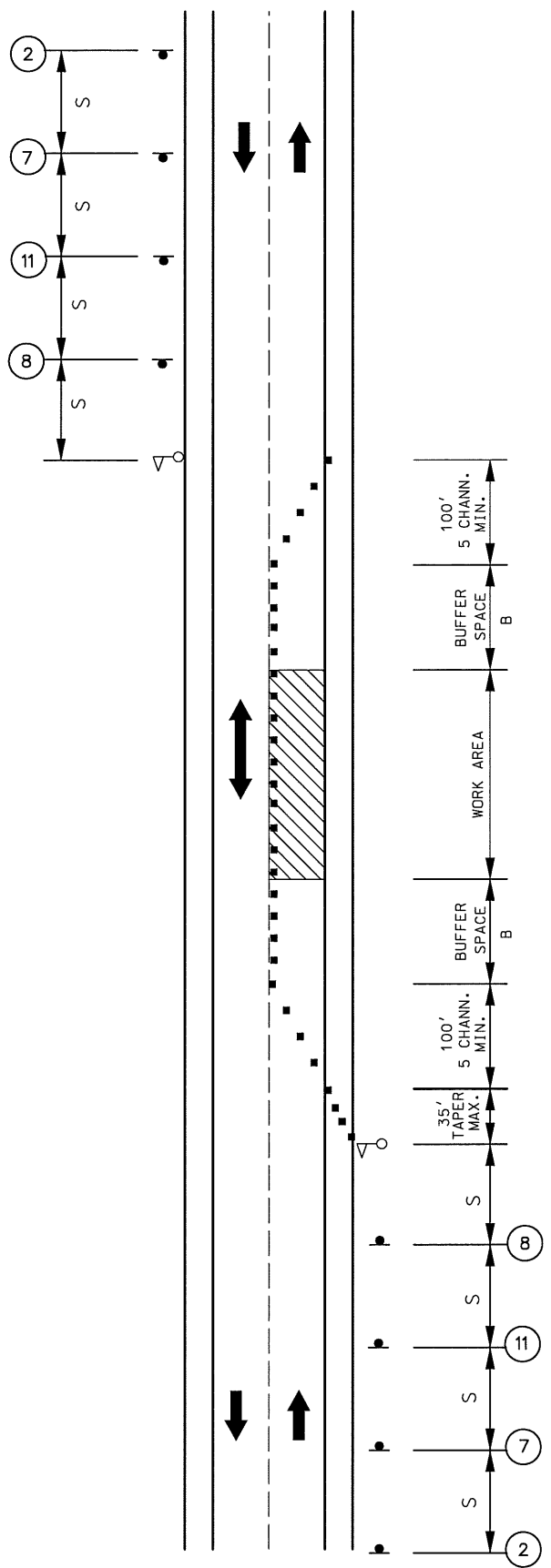
- SIGN (SINGLE SIDED)
- DIRECTIONAL INDICATOR BARRICADE
- CHANNELIZER (TRIM-LINE)
- WORK AREA
- FLASHING ARROW PANEL
- TRUCK MOUNTED ATTENUATOR (TMA)

NOTES:

- SEE EPG 616.12 WORK ZONE SPEED LIMITS FOR SPEED LIMIT GUIDELINES.
- REMOVE AND/OR MODIFY ANY EXISTING PAVEMENT MARKING AS NEEDED.
- TEMPORARY PAVEMENT MARKING REQUIRED WITH LONG TERM CLOSURES.
- ALTERNATIVE TEMPORARY TRAFFIC CONTROL SET-UPS SHOULD BE CONSIDERED WHEN REDUCTION IN CAPACITY CANNOT BE TOLERATED.
- FOR NIGHTTIME OPERATIONS, REVIEW EPG 616.6.83 WARNING LIGHTS FOR USE OF SEQUENTIAL LIGHTS.
- FOR FLAGS AND ADVANCE WARNING RAIL SYSTEM, REFER TO EPG 616.6.2.2 FLAGS AND ADVANCE WARNING RAIL SYSTEM.
- REVIEW EPG 616.6.63 CHANNELIZING DEVICES FOR DIFFERENT TYPES AND GUIDELINES FOR THE DEVICES.
- A FLASHING ARROW BOARD SHALL BE USED WHEN A FREEWAY LANE IS CLOSED. WHEN MORE THAN ONE FREEWAY LANE IS CLOSED, A SEPARATE FLASHING ARROW BOARD SHALL BE USED FOR EACH CLOSED LANE.



NOT TO SCALE



LANE CLOSURE ON TWO-LANE ROAD USING FLAGGERS

TRAFFIC CONTROL LEGEND

- SIGN (SINGLE SIDED)
- CHANNELIZER (TRIM-LINE)
- WORK AREA
- FLAGGER

NOTES:

AUTOMATED FLAGGER ASSISTANCE DEVICES (AFAD) AND PORTABLE SIGNAL FLAGGING DEVICES (PSFD) MAY BE USED AS AN ALTERNATIVE FLAGGING OPERATION.

AFAD AND PSFD TYPICAL APPLICATIONS AND CRITERIA ARE LOCATED AT THE FOLLOWING: EPG 616.8.10A (TA-10A) LANE CLOSURE ON TWO-LANE HIGHWAYS USING AUTOMATED FLAGGER ASSISTANCE DEVICE WITH RED AND AMBER SIGNAL SYSTEM & EPG 616.8.10C (TA-10C) LANE CLOSURE ON TWO-LANE HIGHWAYS USING PORTABLE SIGNAL FLAGGING DEVICE.

SEE EPG 616.12 WORK ZONE SPEED LIMITS FOR SPEED LIMIT GUIDELINES.

IF RUMBLE STRIPS ARE USED, REVIEW 616.6.87 RUMBLE STRIPS.

IF USED AT NIGHT, THE FLAGGER STATIONS SHALL BE ILLUMINATED WITH AN AVERAGE MAINTAINED INTENSITY OF 0.6 FOOTCANDLES (6.5 LUX).

SPEED	SIGN SPACING (ft.)		TAPER LENGTH (ft.)		OPTIONAL BUFFER LENGTH (ft.) (B)	CHANNELIZER SPACING (ft.) TAPERS	BUFFER/WORK AREAS
	UN-DIVIDED (S)	DIVIDED (S)	SHOULDER (1) (T1)	LANE (2) (T2)			
0-35	200	-	-	-	280	-	40
40-45	350	-	-	-	400	-	80
50-55	500	-	-	-	560	-	80
60-70	1000	-	-	-	840	-	120

1 Shoulder taper length based on 10 ft. (standard shoulder width) offset.
2. Lane taper length based on 12 ft. (standard lane width) offset.

NOT TO SCALE

"THIS MEDIA SHOULD NOT BE CONSIDERED A CERTIFIED DOCUMENT."

DATE PREPARED: 12/19/2016

ROUTE: I-70 STATE: MO

DISTRICT: SL SHEET NO.: 11

COUNTY: ST. LOUIS CITY

JOB NO.: WRS1070A

CONTRACT ID.:

PROJECT NO.:

BRIDGE NO.:

DESCRIPTION:

DATE:

MISSOURI HIGHWAYS AND TRANSPORTATION COMMISSION

105 WEST CAPITOL JEFFERSON CITY, MO 65102 1-888-ASK-MODOT (1-888-275-6636)

TRAFFIC CONTROL SHEET LANE CLOSURE ON TWO-LANE ROAD USING FLAGGERS

IF A SEAL IS PRESENT ON THIS SHEET IT HAS BEEN ELECTRONICALLY SEALED AND DATED.