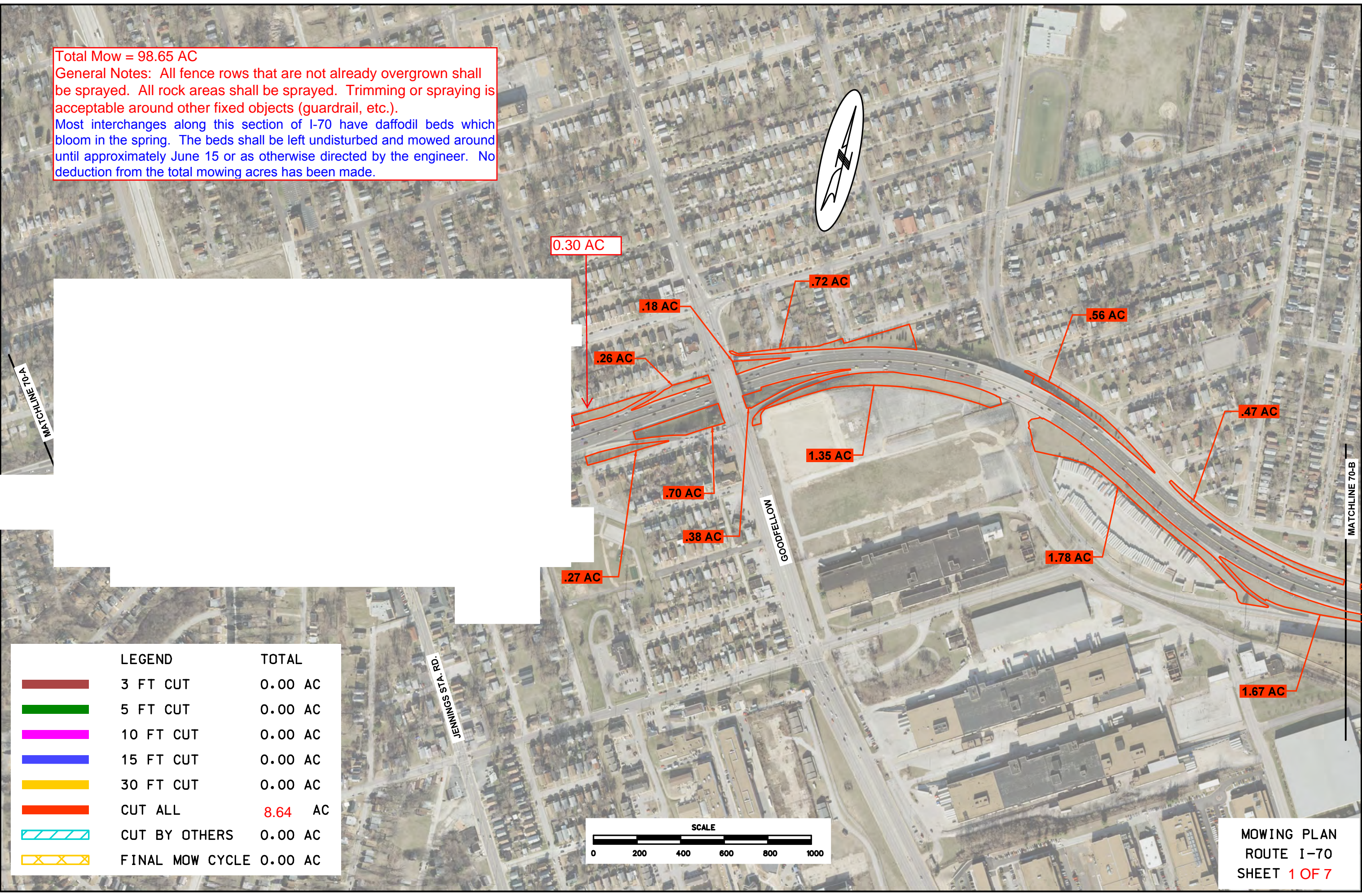


Total Mow = 98.65 AC

General Notes: All fence rows that are not already overgrown shall be sprayed. All rock areas shall be sprayed. Trimming or spraying is acceptable around other fixed objects (guardrail, etc.).









Most interchanges along this section of I-70 have daffodil beds which bloom in the spring. The beds shall be left undisturbed and mowed around until approximately June 15 or as otherwise directed by the engineer. No deduction from the total mowing acres has been made.

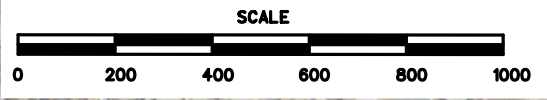


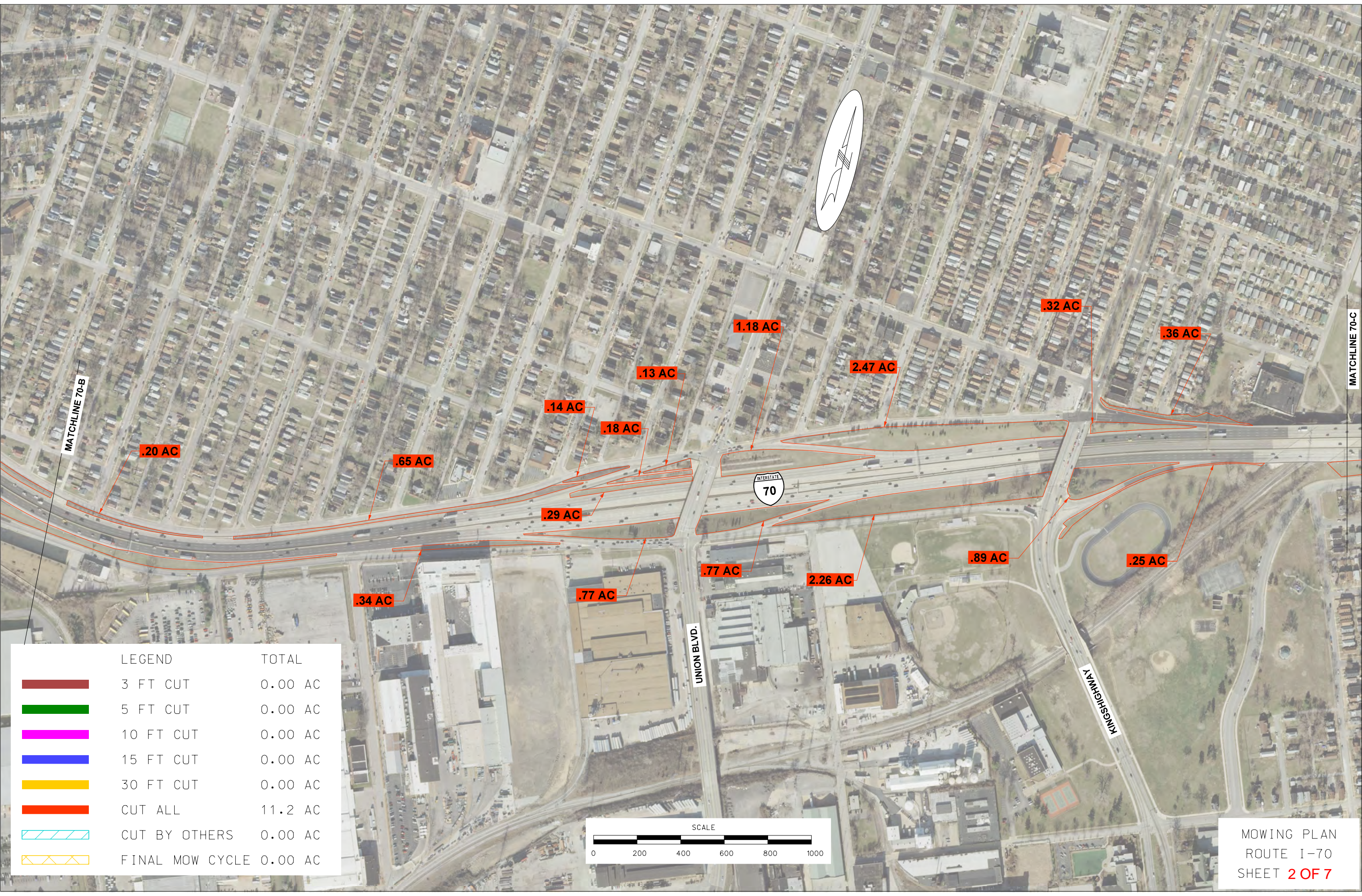
MATCHLINE 70-A









MATCHLINE 70-B

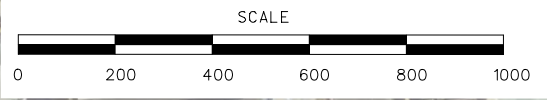
LEGEND

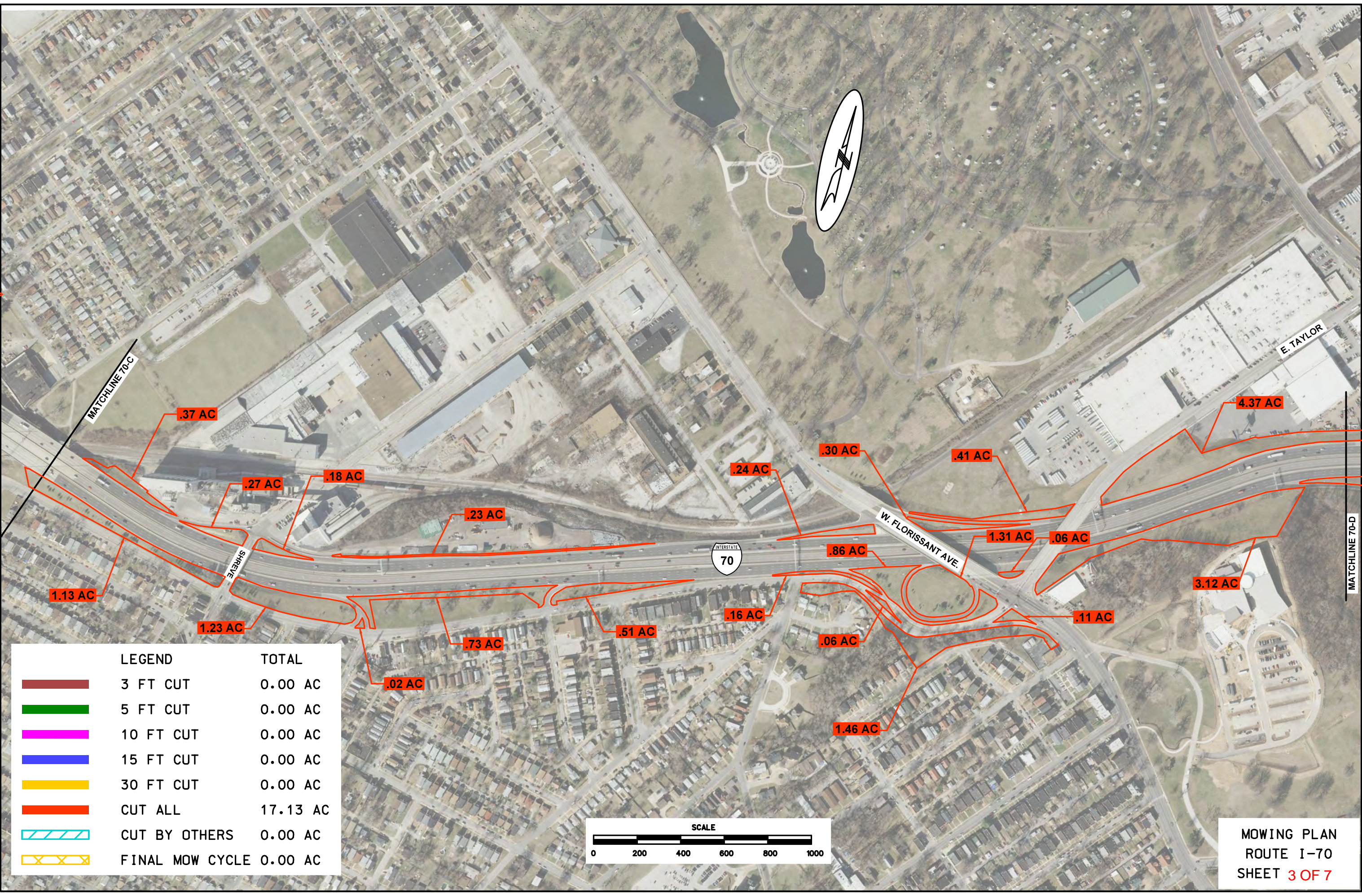
LEGEND	TOTAL
	3 FT CUT 0.00 AC
	5 FT CUT 0.00 AC
	10 FT CUT 0.00 AC
	15 FT CUT 0.00 AC
	30 FT CUT 0.00 AC
	CUT ALL 8.64 AC
	CUT BY OTHERS 0.00 AC
	FINAL MOW CYCLE 0.00 AC











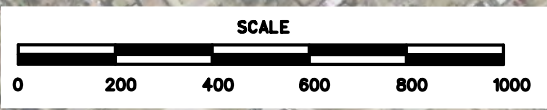


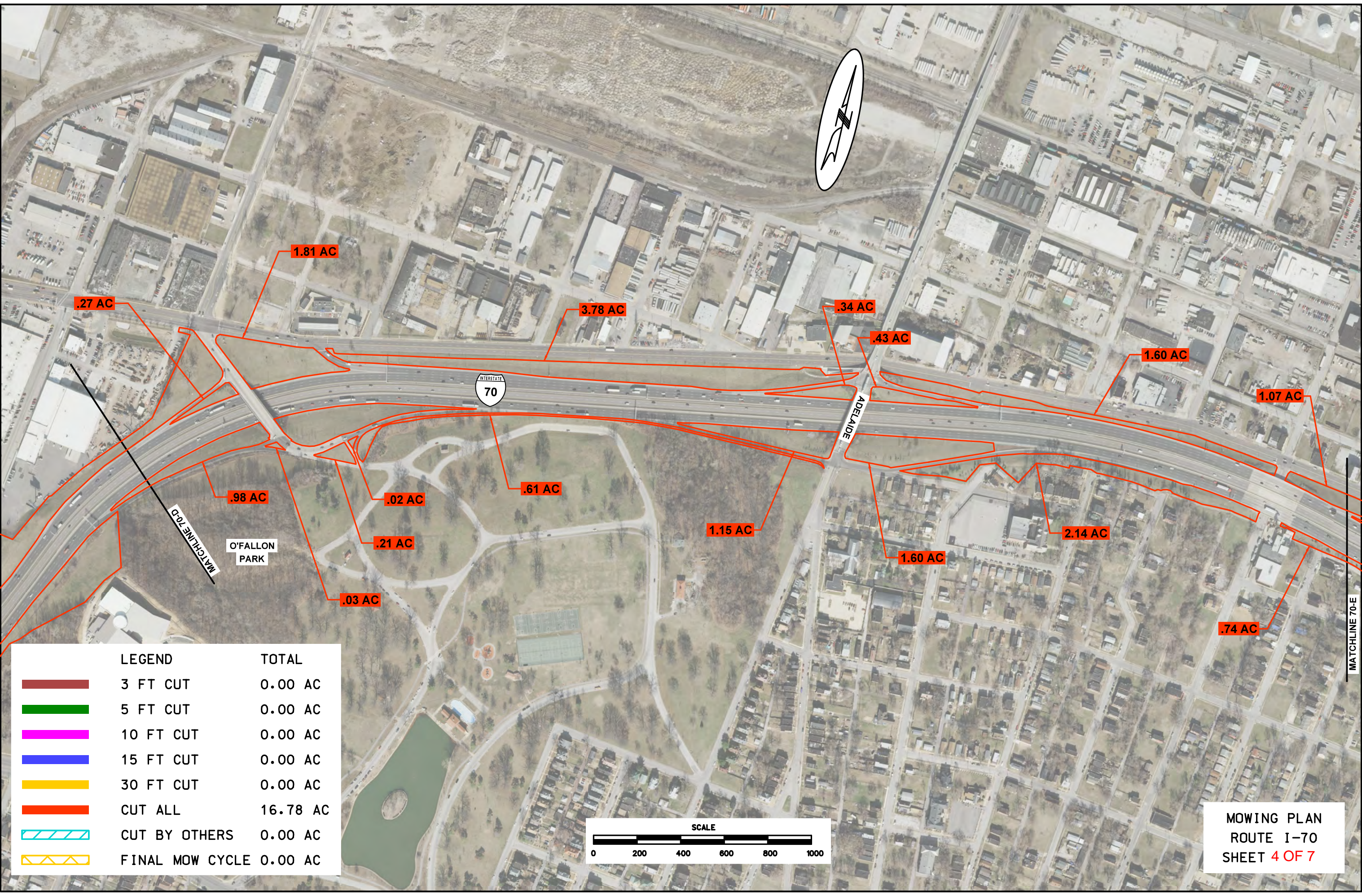
LEGEND		TOTAL
	3 FT CUT	0.00 AC
	5 FT CUT	0.00 AC
	10 FT CUT	0.00 AC
	15 FT CUT	0.00 AC
	30 FT CUT	0.00 AC
	CUT ALL	11.2 AC
	CUT BY OTHERS	0.00 AC
	FINAL MOW CYCLE	0.00 AC











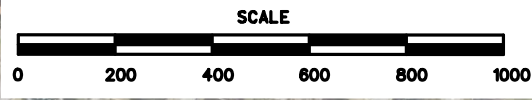


LEGEND		TOTAL
	3 FT CUT	0.00 AC
	5 FT CUT	0.00 AC
	10 FT CUT	0.00 AC
	15 FT CUT	0.00 AC
	30 FT CUT	0.00 AC
	CUT ALL	17.13 AC
	CUT BY OTHERS	0.00 AC
	FINAL MOW CYCLE	0.00 AC





LEGEND		TOTAL
	3 FT CUT	0.00 AC
	5 FT CUT	0.00 AC
	10 FT CUT	0.00 AC
	15 FT CUT	0.00 AC
	30 FT CUT	0.00 AC
	CUT ALL	16.78 AC
	CUT BY OTHERS	0.00 AC
	FINAL MOW CYCLE	0.00 AC



MOWING PLAN  
 ROUTE I-70  
 SHEET 4 OF 7

.27 AC

1.81 AC

3.78 AC

.34 AC

.43 AC

1.60 AC

1.07 AC

INTERSTATE  
70

ADELADE

MATCHLINE 70-D

O'FALLON  
PARK

.98 AC

.02 AC

.61 AC

1.15 AC

2.14 AC

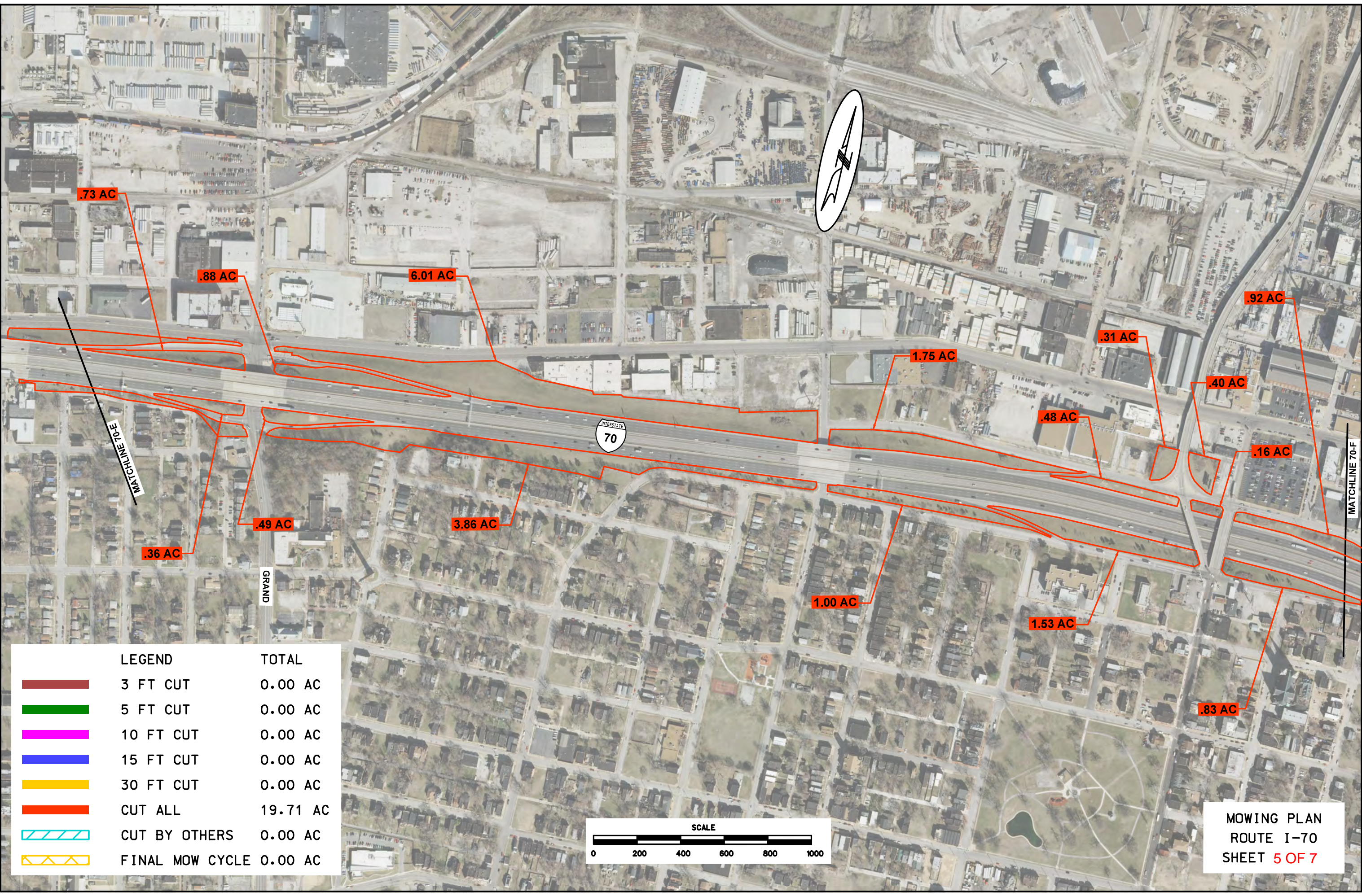
.21 AC

.03 AC

1.60 AC

.74 AC

MATCHLINE 70-E



.73 AC

.88 AC

6.01 AC

.92 AC

.31 AC

1.75 AC

.40 AC

.48 AC

.16 AC

.49 AC

3.86 AC

1.00 AC

1.53 AC

.83 AC









.36 AC

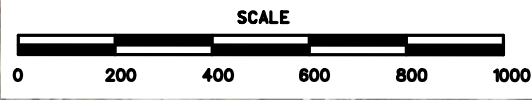
GRAND



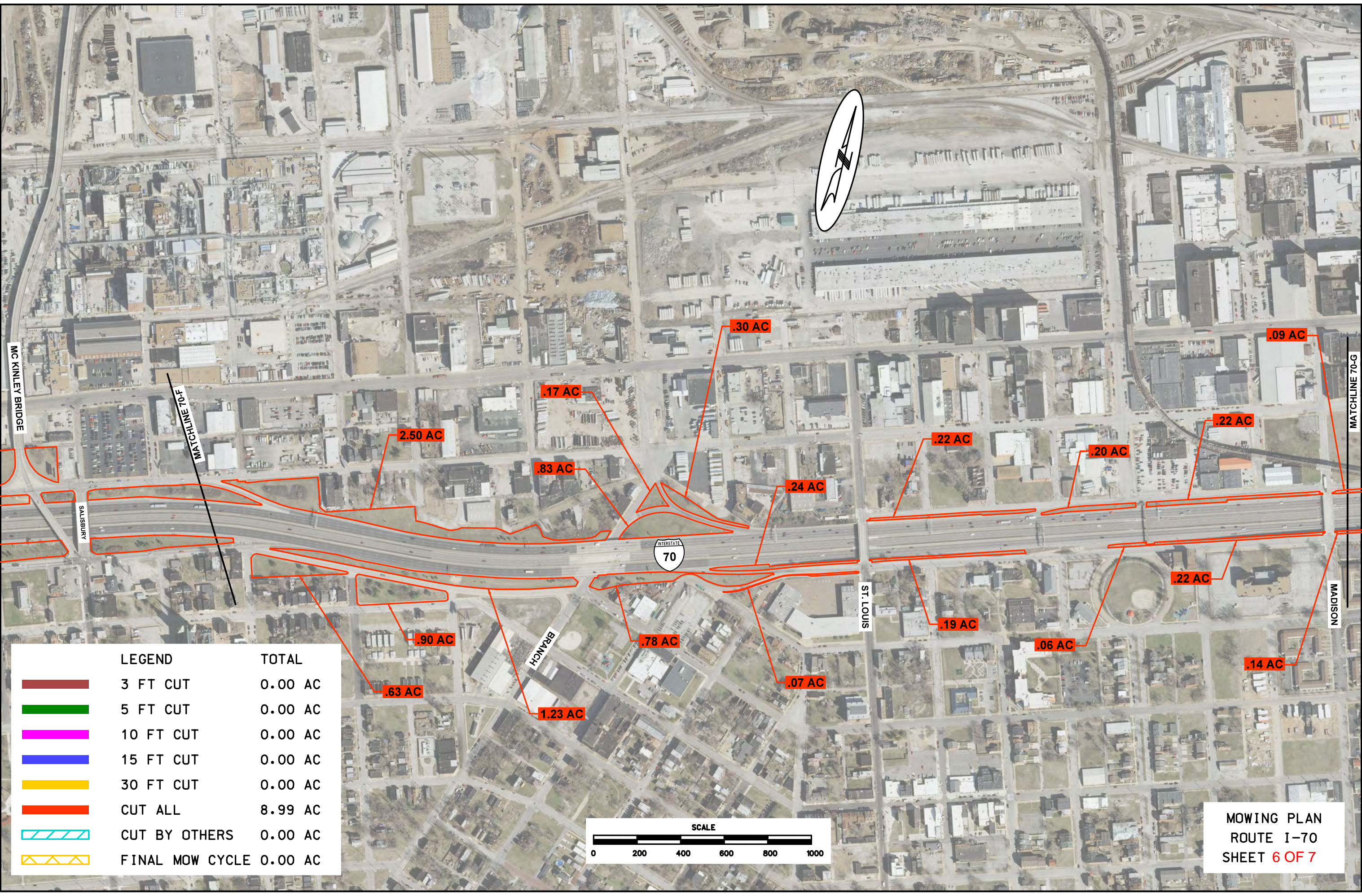
LEGEND









TOTAL

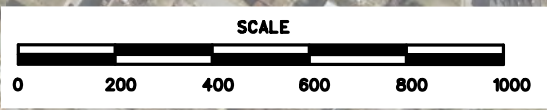
	3 FT CUT	0.00 AC
	5 FT CUT	0.00 AC
	10 FT CUT	0.00 AC
	15 FT CUT	0.00 AC
	30 FT CUT	0.00 AC
	CUT ALL	19.71 AC
	CUT BY OTHERS	0.00 AC
	FINAL MOW CYCLE	0.00 AC



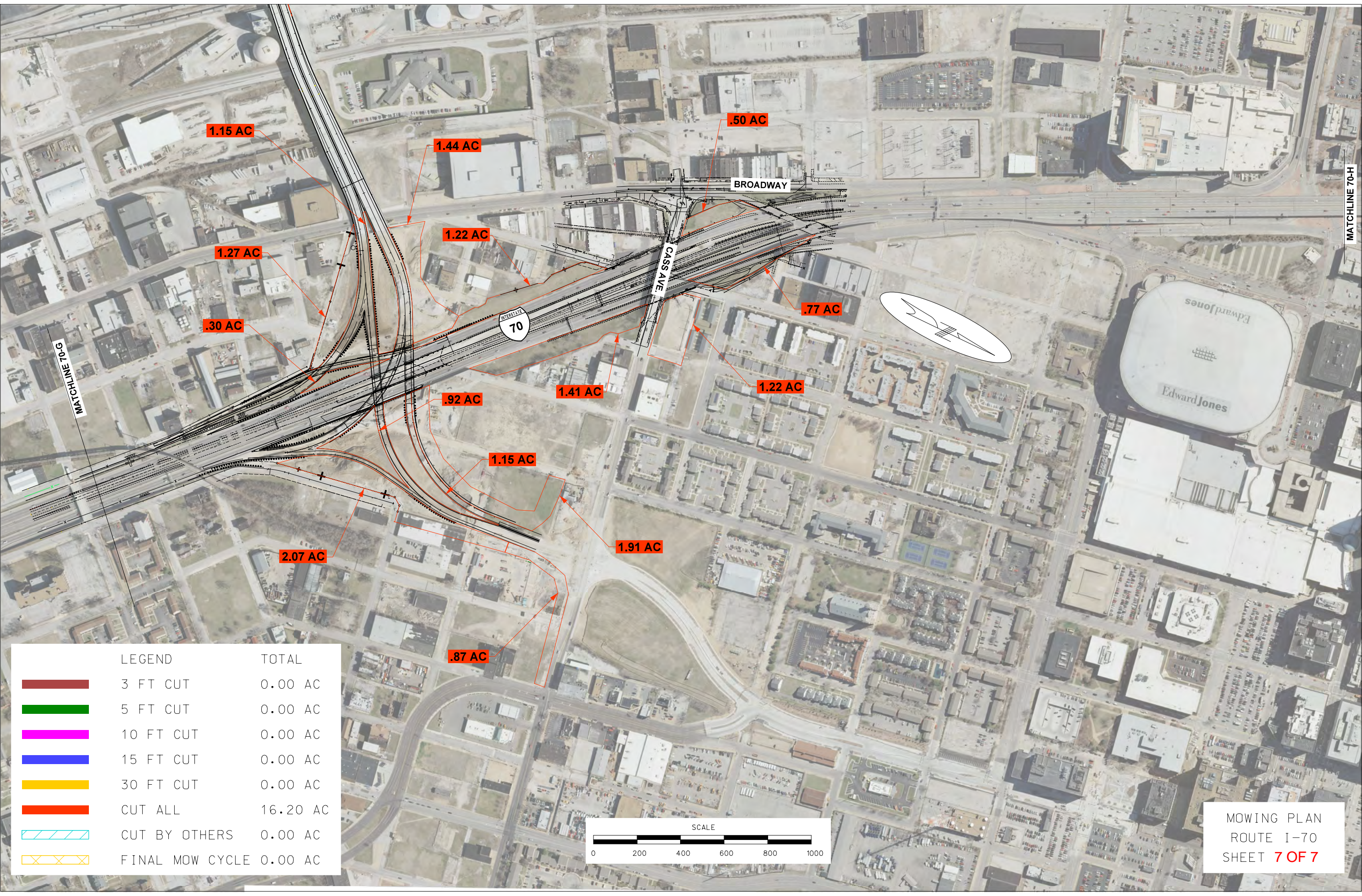
MOWING PLAN  
ROUTE I-70  
SHEET 5 OF 7



LEGEND		TOTAL
	3 FT CUT	0.00 AC
	5 FT CUT	0.00 AC
	10 FT CUT	0.00 AC
	15 FT CUT	0.00 AC
	30 FT CUT	0.00 AC
	CUT ALL	8.99 AC
	CUT BY OTHERS	0.00 AC
	FINAL MOW CYCLE	0.00 AC



MOWING PLAN  
ROUTE I-70  
SHEET 6 OF 7



1.15 AC

1.44 AC

.50 AC

1.27 AC

1.22 AC

BROADWAY

.30 AC

INTERSTATE  
70

.77 AC

MATCHLINE 70-H

CASS AVE

1.22 AC

.92 AC









1.41 AC

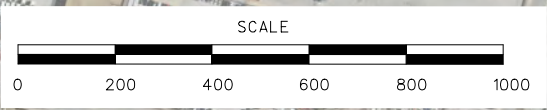
1.15 AC

1.91 AC

2.07 AC

.87 AC

LEGEND		TOTAL
	3 FT CUT	0.00 AC
	5 FT CUT	0.00 AC
	10 FT CUT	0.00 AC
	15 FT CUT	0.00 AC
	30 FT CUT	0.00 AC
	CUT ALL	16.20 AC
	CUT BY OTHERS	0.00 AC
	FINAL MOW CYCLE	0.00 AC



MOWING PLAN  
ROUTE I-70  
SHEET 7 OF 7