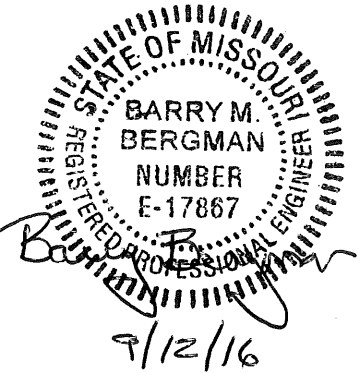
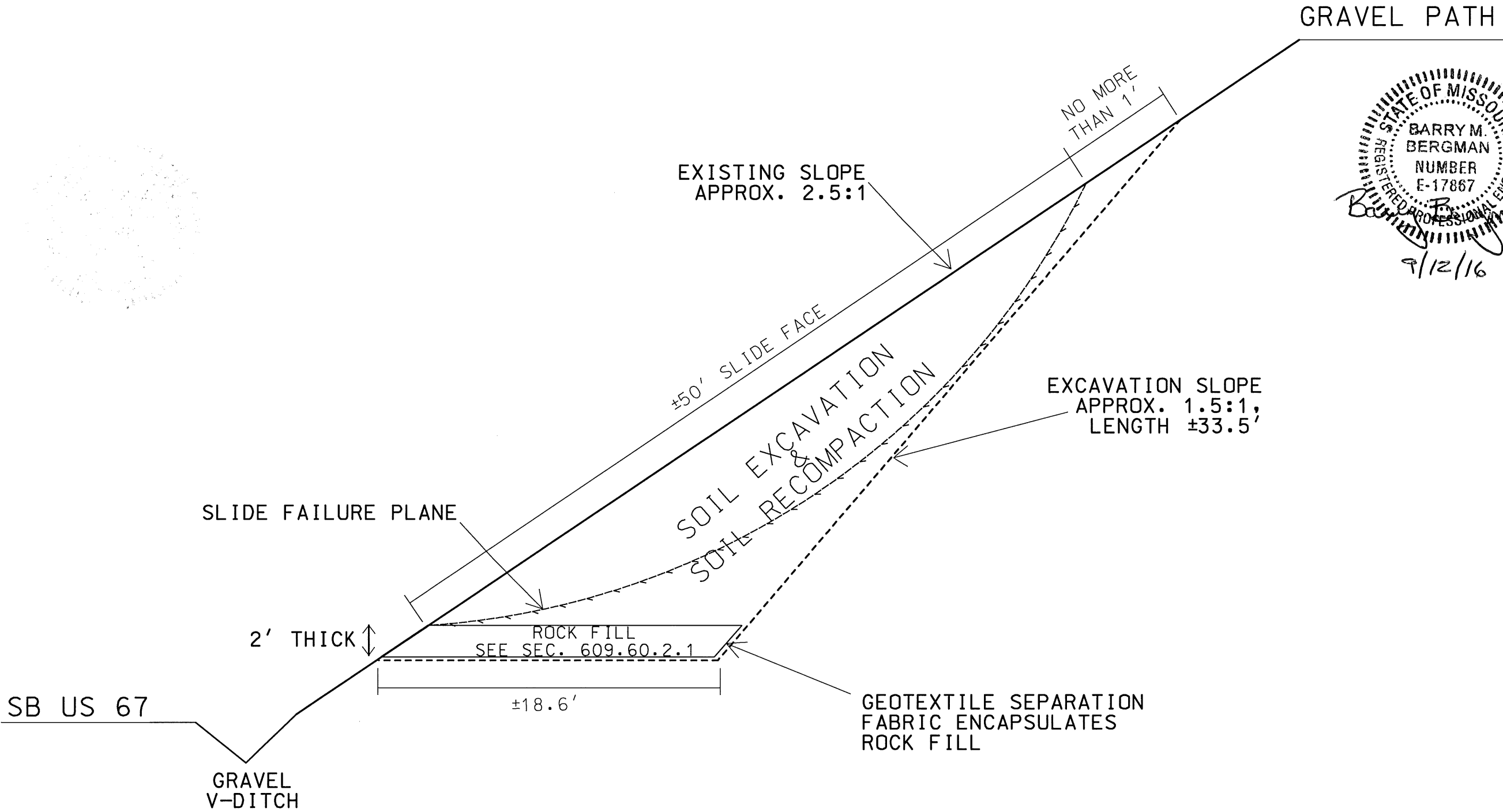




NOT TO SCALE

SOIL REPLACEMENT  
WITH DRAIN BLANKET



NOTE: DIMENSIONS ARE APPROXIMATE. LIMITS OF WORK TO BE DETERMINED BY ENGINEER OR GEOLOGIST. EXCAVATION AREA SHALL NOT EXTEND MORE THAN 1' BEYOND TOP OF SLIDE. SEE MISSOURI STANDARD SPECIFICATIONS FOR HIGHWAY CONSTRUCTION SECTION 609.60.2.1 FOR ROCK FILL DETAILS.

DISCLAIMER  
THE PROFESSIONAL WHOSE SIGNATURE AND PERSONAL SEAL APPEAR HEREON ASSUMES RESPONSIBILITY ONLY FOR WHAT APPEARS ON THIS PAGE, AND DISCLAIMS (PURSUANT TO SECTION 327.411 RSMO) SPECIFICATION, ESTIMATES, REPORTS, OR OTHER DOCUMENTS OR INSTRUMENTS NOT SEALED BY THE UNDERSIGNED PROFESSIONAL RELATING TO OR INTENDED TO BE USED FOR ANY PART OR PARTS OF THE PROJECT TO WHICH THIS PAGE REFERS.

|   |  |
|---|--|
| "THIS MEDIA SHOULD NOT BE CONSIDERED A CERTIFIED DOCUMENT." |  |
| DATE PREPARED<br>8/16/2016                                  |  |
| ROUTE<br>US 67 SB   | STATE<br>MO  |
| DISTRICT<br>SL  | SHEET NO.<br>2   |
| COUNTY<br>ST. LOUIS   |  |
| JOB NO.<br>WRSLO67D   |  |
| CONTRACT ID.  |  |
| PROJECT NO.   |  |
| BRIDGE NO.  |  |
| DESCRIPTION   | DATE   |
| MISSOURI HIGHWAYS AND TRANSPORTATION COMMISSION             | 105 WEST CAPITOL<br>JEFFERSON CITY, MO 65102<br>1-888-ASK-MODOT (1-888-275-6636) |
| TYPICAL SECTION<br>SHEET 1 OF 1                             |  |

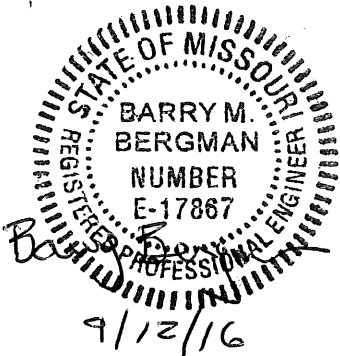
IF A SEAL IS PRESENT ON THIS SHEET IT HAS BEEN ELECTRONICALLY SEALED AND DATED.

MISSOURI HIGHWAYS AND TRANSPORTATION COMMISSION  
SUMMARY OF QUANTITIES

"THIS MEDIA SHOULD NOT BE CONSIDERED A CERTIFIED DOCUMENT."

|                            |                |
|----------------------------|----------------|
| DATE PREPARED<br>8/16/2016 |                |
| ROUTE<br>JS 67 SB          | STATE<br>MO    |
| DISTRICT<br>SL             | SHEET NO.<br>3 |
| COUNTY<br>ST. LOUIS        |                |
| JOB NO.<br>WRSL067D        |                |
| CONTRACT ID.               |                |
| PROJECT NO.                |                |
| BRIDGE NO.                 |                |

| EARTHWORK *    |                  |                    |                       |                      |                   |                         |
|----------------|------------------|--------------------|-----------------------|----------------------|-------------------|-------------------------|
| PLAN SHEET NO. | STATION          | CLASS A EXCAVATION | COMPACTING EMBANKMENT | FURNISHING ROCK FILL | PLACING ROCK FILL | GEOTEXTILE (SEPARATION) |
|                |                  | (CU YD)            | (CU YD)               | (CU YD)              | (CU YD)           | (SQ YD)                 |
| 4              | 106+43 TO 107+08 | 415.0              | 415.0                 | 172.9                | 172.9             | 326.3                   |
|                |                  |                    |                       |                      |                   |                         |
|                | SUBTOTAL         | 415.0              | 415.0                 | 172.9                | 172.9             | 326.3                   |
|                | TOTAL            | 415.0              | 415.0                 | 172.9                | 172.9             | 327.0                   |

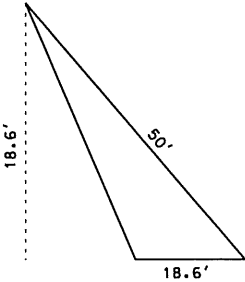


|              |            |
|--------------|------------|
| MOBILIZATION |            |
| PAY TOTAL    | 1 LUMP SUM |

| TEMPORARY EROSION CONTROL * |                  |                  |            |                     |
|-----------------------------|------------------|------------------|------------|---------------------|
| PLAN SHEET NO.              | STATION          | SEDIMENT REMOVAL | SILT FENCE | TYPE II DITCH CHECK |
|                             |                  | (CU YD)          | (LF)       | (LF)                |
| 7                           | 106+20 TO 110+56 | 5.0              | 100.0      | 24.0                |
|                             |                  |                  |            |                     |
|                             | SUBTOTAL         | 5.0              | 100.0      | 24.0                |
|                             | TOTAL            | 5.0              | 100.0      | 24.0                |

|                 |            |
|-----------------|------------|
| TRAFFIC CONTROL |            |
| PAY TOTAL       | 1 LUMP SUM |

|  |            |
|--|------------|
| COOL SEASON SEED WITH TYPE 1 EROSION CONTROL BLANKET |            |
| PAY TOTAL  | 1 LUMP SUM |



DISCLAIMER  
THE PROFESSIONAL WHOSE SIGNATURE AND PERSONAL SEAL APPEAR HEREON ASSUMES RESPONSIBILITY ONLY FOR WHAT APPEARS ON THIS PAGE, AND DISCLAIMS (PURSUANT TO SECTION 327.411 RSMO) SPECIFICATION, ESTIMATES, REPORTS, OR OTHER DOCUMENTS OR INSTRUMENTS NOT SEALED BY THE UNDERSIGNED PROFESSIONAL RELATING TO OR INTENDED TO BE USED FOR ANY PART OR PARTS OF THE PROJECT TO WHICH THIS PAGE REFERS.

\* STATIONS ARE APPROXIMATE. QUANTITIES BASED ON EXCAVATED AREA OF 18.6' BACKSIDE HEIGHT, 18.6' BASE, A REPAIR FACE OF 50', AND A REPAIR LENGTH OF 65'. THESE DIMENSIONS MAY BE INCREASED OR DECREASED BY THE ENGINEER BASED ON THE FIELD CONDITIONS. ADDITIONS OR DEDUCTIONS TO PLAN QUANTITIES WILL BE MADE AT THE CONTRACT UNIT PRICE.

| DESCRIPTION | DATE |
|-------------|------|
|             |      |
|             |      |
|             |      |
|             |      |
|             |      |
|             |      |
|             |      |
|             |      |
|             |      |

MISSOURI HIGHWAYS AND TRANSPORTATION COMMISSION



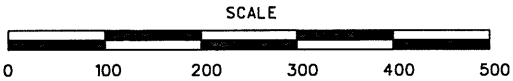
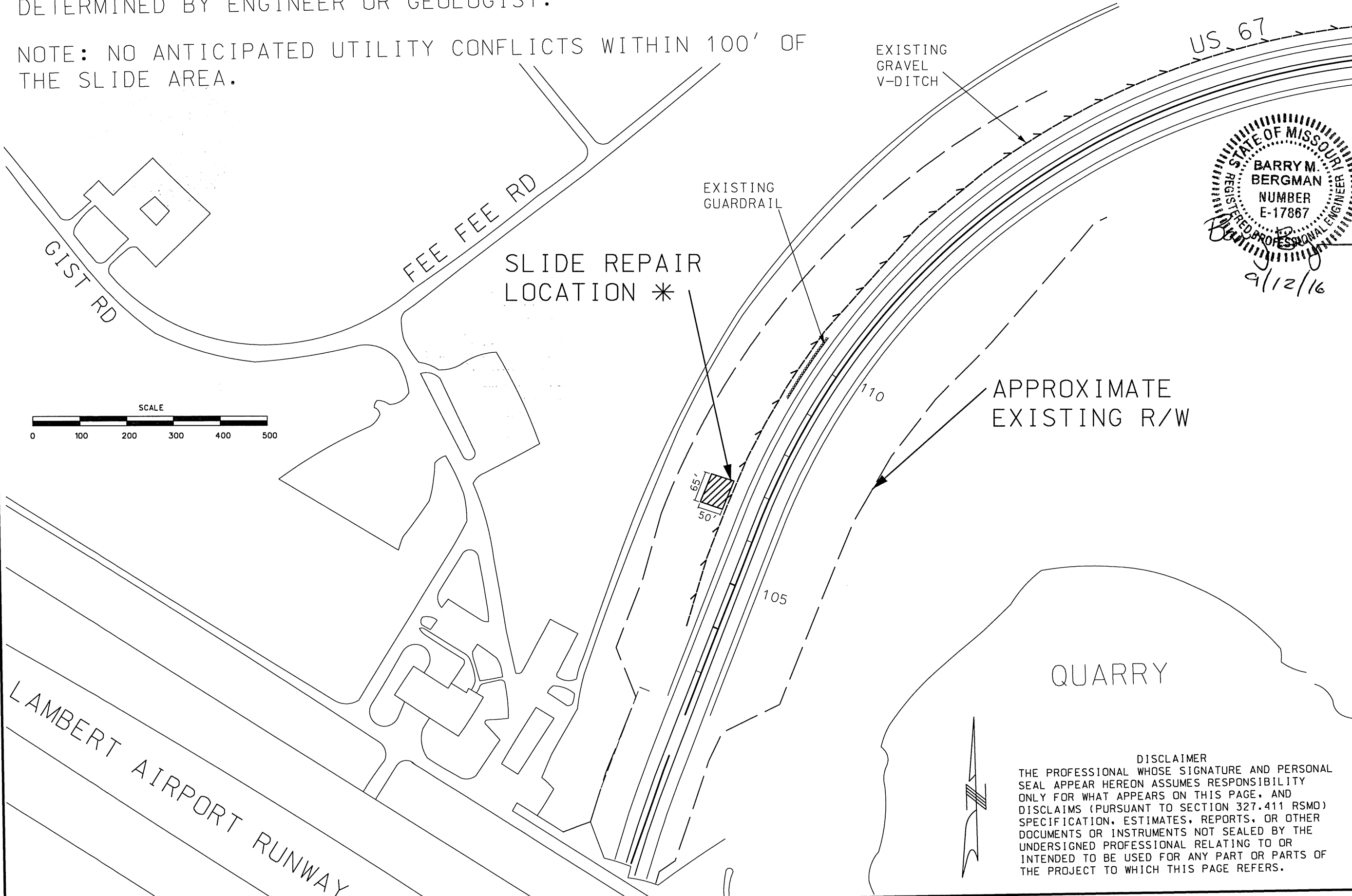
105 WEST CAPITOL  
JEFFERSON CITY, MO 65102  
1-888-ASK-MODOT (1-888-275-6636)

IF A SEAL IS PRESENT ON THIS SHEET IT HAS BEEN ELECTRONICALLY SEALED AND DATED.

|  |  |  |  |  |  |  |  |  |  |  |  |  |  |  |  |  |  |  |  |  |  |  |  |  |  |  |  |  |  |  |  |  |  |  |  |
|--|--|--|--|--|--|--|--|--|--|--|--|--|--|--|--|--|--|--|--|--|--|--|--|--|--|--|--|--|--|--|--|--|--|--|--|
| EFFECTIVE: 08-01-2012  |  |  |  |  |  |  |  |  |  |  |  | <div>DISCLAIMER</div> <div>THE PROFESSIONAL WHOSE SIGNATURE AND PERSONAL SEAL APPEAR HEREON ASSUMES RESPONSIBILITY ONLY FOR WHAT APPEARS ON THIS PAGE, AND DISCLAIMS (PURSUANT TO SECTION 327.411 RSMO) SPECIFICATION, ESTIMATES, REPORTS, OR OTHER DOCUMENTS OR INSTRUMENTS NOT SEALED BY THE UNDERSIGNED PROFESSIONAL RELATING TO OR INTENDED TO BE USED FOR ANY PART OR PARTS OF THE PROJECT TO WHICH THIS PAGE REFERS.</div> <div>DATE PREPARED<br/>8/16/2016</div> <div>ROUTE<br/>US 67 SB</div> <div>STATE<br/>MO</div> <div>DISTRICT<br/>SL</div> <div>SHEET NO.<br/>3</div> <div>COUNTY<br/>ST. LOUIS</div> <div>JOB NO.<br/>WRSLO67D</div> <div>CONTRACT ID.</div> <div>PROJECT NO.</div> <div>BRIDGE NO.</div> <div>DESCRIPTION</div> <div>DATE</div> <div>MISSOURI HIGHWAYS AND TRANSPORTATION COMMISSION</div> <div><div>105 WEST CAPITOL<br/>JEFFERSON CITY, MO 65102<br/>1-888-ASK-MODOT (1-888-275-6636)</div><div>QUANTITY SHEETS<br/>SHEET 1 OF 2</div></div> |  |  |  |  |  |  |  |  |  |  |  |  |  |  |  |  |  |  |  |  |  |  |  |
| "THIS MEDIA SHOULD NOT BE CONSIDERED A CERTIFIED DOCUMENT."  |  |  |  |  |  |  |  |  |  |  |  |  |  |  |  |  |  |  |  |  |  |  |  |  |  |  |  |  |  |  |  |  |  |  |  |
|  |  |  |  |  |  |  |  |  |  |  |  |  |  |  |  |  |  |  |  |  |  |  |  |  |  |  |  |  |  |  |  |  |  |  |  |
| WARNING SIGNS  |  |  |  |  |  |  |  |  |  |  |  | GUIDE SIGNS  |  |  |  |  |  |  |  |  |  |  |  |  |  |  |  |  |  |  |  |  |  |  |  |
| WO1-1L 48X48 16.00 |  |  |  |  |  |  |  |  |  |  |  |  |  |  |  |  |  |  |  |  |  |  |  |  |  |  |  |  |  |  |  |  |  |  |  |

\* SLOPE DIMENSIONS SHOWN ARE APPROXIMATE. ACTUAL SLOPE REPAIR LIMITS TO BE DETERMINED BY ENGINEER OR GEOLOGIST.

NOTE: NO ANTICIPATED UTILITY CONFLICTS WITHIN 100' OF THE SLIDE AREA.



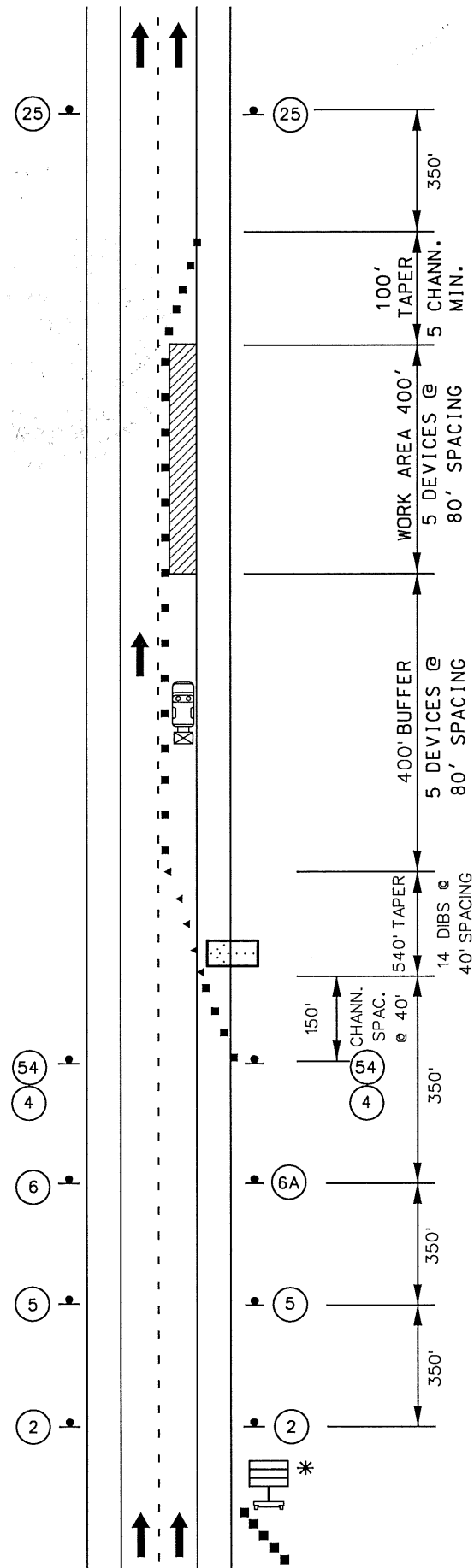
STATE OF MISSOURI  
REGISTERED PROFESSIONAL ENGINEER  
BARRY M. BERGMAN  
NUMBER E-17867  
9/12/16

|  |             |
|--|-------------|
| "THIS MEDIA SHOULD NOT BE CONSIDERED A CERTIFIED DOCUMENT."                |             |
| DATE PREPARED 8/16/2016  |             |
| ROUTE US 67 SB   | STATE MO    |
| DISTRICT SL  | SHEET NO. 4 |
| COUNTY ST. LOUIS   |             |
| JOB NO. WRSL067D   |             |
| CONTRACT ID.   |             |
| PROJECT NO.  |             |
| BRIDGE NO.   |             |
| DESCRIPTION  | DATE        |
| MISSOURI HIGHWAYS AND TRANSPORTATION COMMISSION                            |             |
| 105 WEST CAPITAL JEFFERSON CITY, MO 65102 1-888-ASK-MODOT (1-888-275-6636) |             |
| PLAN SHEET 1 OF 1  |             |

DISCLAIMER  
THE PROFESSIONAL WHOSE SIGNATURE AND PERSONAL SEAL APPEAR HEREON ASSUMES RESPONSIBILITY ONLY FOR WHAT APPEARS ON THIS PAGE, AND DISCLAIMS (PURSUANT TO SECTION 327.411 RSMO) SPECIFICATION, ESTIMATES, REPORTS, OR OTHER DOCUMENTS OR INSTRUMENTS NOT SEALED BY THE UNDERSIGNED PROFESSIONAL RELATING TO OR INTENDED TO BE USED FOR ANY PART OR PARTS OF THE PROJECT TO WHICH THIS PAGE REFERS.



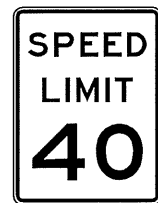
NOT TO SCALE



### STATIONARY LANE CLOSURE ON A DIVIDED HIGHWAY

#### TRAFFIC CONTROL LEGEND

- SIGN (SINGLE SIDED)
- DIRECTIONAL INDICATOR BARRICADE
- CHANNELIZER (TRIM-LINE)
- WORK AREA
- FLASHING ARROW PANEL
- ADVANCE WARNING RAILS
- TRUCK MOUNTED ATTENUATOR (TMA)
- CHANGEABLE MESSAGE SIGN (CMS)



R2-1

25

(NORMAL SPEED)



G020-5aP

54

R2-1

4



DISCLAIMER  
THE PROFESSIONAL WHOSE SIGNATURE AND PERSONAL SEAL APPEAR HEREON ASSUMES RESPONSIBILITY ONLY FOR WHAT APPEARS ON THIS PAGE, AND DISCLAIMS (PURSUANT TO SECTION 327.411 RSMO) SPECIFICATION, ESTIMATES, REPORTS, OR OTHER DOCUMENTS OR INSTRUMENTS NOT SEALED BY THE UNDERSIGNED PROFESSIONAL RELATING TO OR INTENDED TO BE USED FOR ANY PART OR PARTS OF THE PROJECT TO WHICH THIS PAGE REFERS.



2



5

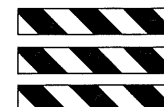


6

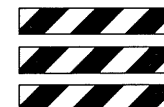


6A

#### ADVANCE WARNING RAIL SYSTEM



LEFT SIDE  
OF ROAD



RIGHT SIDE  
OF ROAD

#### NOTES:

- SEE EPG 616.12 WORK ZONE SPEED LIMITS FOR SPEED LIMIT GUIDELINES.
- TEMPORARY PAVEMENT MARKING REQUIRED WITH LONG TERM CLOSURES.
- REMOVE AND/OR MODIFY ANY EXISTING PAVEMENT MARKING AS NEEDED.
- REVIEW EPG 616.6.83 WARNING LIGHTS WHEN SEQUENTIAL OR WARNING LIGHTS SHOULD BE USED ON NIGHTTIME OPERATIONS.
- IF RUMBLE STRIPS ARE USED, REVIEW EPG 616.6.87 RUMBLE STRIPS.
- FOR FLAGS AND ADVANCE WARNING RAIL SYSTEMS, REFER TO EPG 616.6.2.2 FLAGS AND ADVANCE WARNING RAIL SYSTEM.
- REVIEW EPG 616.6.63 CHANNELIZING DEVICES FOR DIFFERENT TYPES AND GUIDELINES FOR THE DEVICES.

"THIS MEDIA SHOULD  
NOT BE CONSIDERED  
A CERTIFIED  
DOCUMENT."

DATE PREPARED  
8/16/2016

ROUTE  
US 67 SB

STATE  
MO

DISTRICT  
SL

SHEET NO.  
6

COUNTY  
ST. LOUIS

JOB NO.  
WRSLO67D

CONTRACT ID.

PROJECT NO.

BRIDGE NO.

DESCRIPTION

DATE

MISSOURI HIGHWAYS AND TRANSPORTATION  
COMMISSION



105 WEST CAPITOL  
JEFFERSON CITY, MO 65102  
1-888-ASK-MODOT (1-888-275-6636)

TRAFFIC CONTROL  
SHEET 2 OF 2

