

DESIGN DESIGNATION

FUNCTIONAL CLASSIFICATION-

MINOR ROAD

NO NEW RIGHT OF WAY
WILL BE REQUIRED FOR
THIS PROJECT.

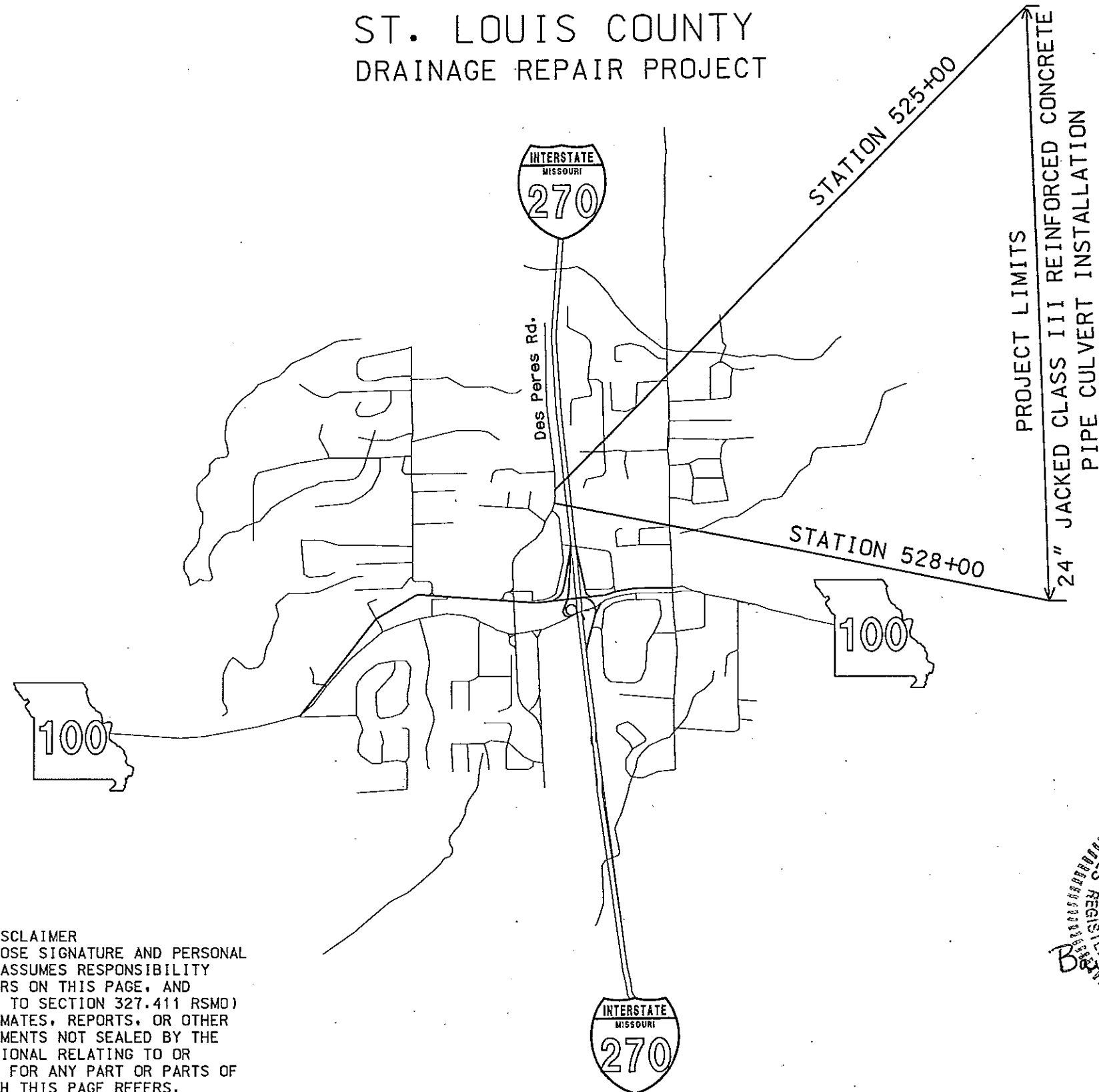
CONVENTIONAL SYMBOLS
(USED IN PLANS)

	EXISTING	NEW
BUILDINGS AND STRUCTURES		
GUARD RAIL		
CONCRETE RIGHT-OF-WAY MARKER		
STEEL RIGHT-OF-WAY MARKER		
LOCATION SURVEY MARKER		
UTILITIES		
FIBER OPTICS		
OVERHEAD TELEPHONE		
UNDERGROUND TELEPHONE		
OVERHEAD POWER		
UNDERGROUND POWER		
GAS		
WATER		
MANHOLE		
FIRE HYDRANT		
WATER VALVE		
WATER METER		
DROP INLET		
DITCH BLOCK		
GROUND MOUNTED SIGN		
LIGHT POLE		
H-FRAME POWER POLE		
TELEPHONE PEDESTAL		
FENCE		
CHAIN LINK		
WOVEN WIRE		
GATE POST		
BENCHMARK		

NOTE: DASHED OR OPEN SYMBOLS INDICATE
EXISTING FEATURES

MISSOURI HIGHWAYS AND TRANSPORTATION COMMISSION
PLANS FOR PROPOSED
STATE HIGHWAY

ST. LOUIS COUNTY
DRAINAGE REPAIR PROJECT



DISCLAIMER
THE PROFESSIONAL WHOSE SIGNATURE AND PERSONAL
SEAL APPEAR HEREON ASSUMES RESPONSIBILITY
ONLY FOR WHAT APPEARS ON THIS PAGE, AND
DISCLAIMS (PURSUANT TO SECTION 327.411 RSMO)
SPECIFICATION, ESTIMATES, REPORTS, OR OTHER
DOCUMENTS OR INSTRUMENTS NOT SEALED BY THE
UNDERSIGNED PROFESSIONAL RELATING TO OR
INTENDED TO BE USED FOR ANY PART OR PARTS OF
THE PROJECT TO WHICH THIS PAGE REFERS.

STATE OF MISSOURI
REGISTERED PROFESSIONAL ENGINEER
BARRY M. BERGMAN
NUMBER E-17887
1/31/14

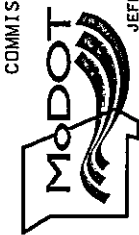
NOT TO SCALE

"THIS MEDIA SHOULD
NOT BE CONSIDERED
A CERTIFIED
DOCUMENT."

DATE PREPARED 1/28/2014	
ROUTE 270	STATE MO
DISTRICT SL	SHEET NO. 1
COUNTY ST. LOUIS	
JOB NO. WRSL270F	
CONTRACT ID.	
PROJECT NO.	
BRIDGE NO.	

DATE	DESCRIPTION

MISSOURI HIGHWAYS AND TRANSPORTATION
COMMISSION
105 WEST CAPITAL
JEFFERSON CITY, MO 65102
1-888-ASK-MODOT (1-888-275-6636)



LOCATION SKETCH

IF A SEAL IS PRESENT ON THIS SHEET IT HAS BEEN ELECTRONICALLY SEALED AND DATED.

DISCLAIMER

THE PROFESSIONAL WHOSE SIGNATURE AND PERSONAL SEAL APPEAR HEREON ASSUMES RESPONSIBILITY ONLY FOR WHAT APPEARS ON THIS PAGE, AND DISCLAIMS (PURSUANT TO SECTION 327.411 RSMO) SPECIFICATION, ESTIMATES, REPORTS, OR OTHER DOCUMENTS OR INSTRUMENTS NOT SEALED BY THE UNDERSIGNED PROFESSIONAL RELATING TO OR INTENDED TO BE USED FOR ANY PART OR PARTS OF THE PROJECT TO WHICH THIS PAGE REFERS.

"THIS MEDIA SHOULD NOT BE CONSIDERED A CERTIFIED DOCUMENT."

Table with columns: SIGN, SIZE (IN.), AREA (SQ. FT.), QTY, TOTAL AREA, QTY RELOC, TOTAL RELOC AREA, DESCRIPTION. Includes sections for WARNING SIGNS, GUIDE SIGNS, REGULATORY SIGNS, and MISCELLANEOUS SIGNS.

Table with columns: SIGN, SIZE (IN.), AREA (SQ. FT.), QTY, TOTAL AREA, QTY RELOC, TOTAL RELOC AREA, DESCRIPTION. Includes sections for WARNING SIGNS, GUIDE SIGNS, REGULATORY SIGNS, and MISCELLANEOUS SIGNS.

Table with columns: ITEM NUMBER, TOTAL QTY, DESCRIPTION. Lists various traffic control items and their quantities.

DATE PREPARED 1/28/2014

ROUTE 270 STATE MO DISTRICT SL SHEET NO. 2

COUNTY ST LOUIS

JOB NO. WRSL270F

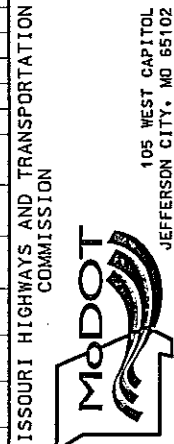
CONTRACT ID.

PROJECT NO.

BRIDGE NO.

Table with columns: DESCRIPTION, DATE. Lists dates for various items.

MISSOURI HIGHWAYS AND TRANSPORTATION COMMISSION



105 WEST CAPITOL JEFFERSON CITY, MO 65102 1-888-ASK-MODOT (1-888-275-6636)

TRAFFIC CONTROL QUANTITIES

Professional Engineer Seal for Barry M. Bergman, State of Missouri, License Number E-12867, dated 1/31/14.

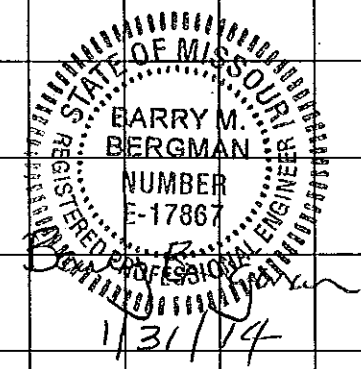
CONSTRUCTION SIGNS TOTAL 252

RELOCATED SIGNS TOTAL *

* NO DIRECT PAY WILL BE MADE FOR RELOCATION OF CONSTRUCTION SIGNING

IF A SEAL IS PRESENT ON THIS SHEET IT HAS BEEN ELECTRONICALLY SEALED AND DATED.

"THIS MEDIA SHOULD NOT BE CONSIDERED A CERTIFIED DOCUMENT."



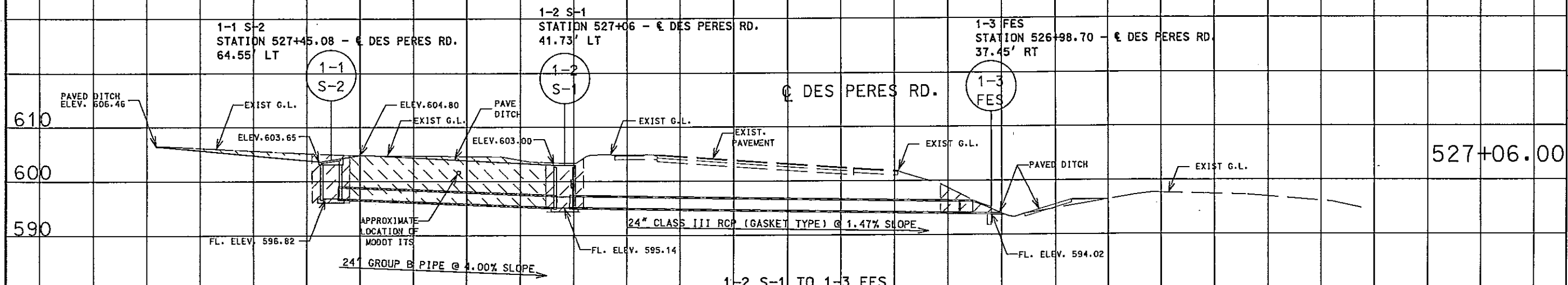
DATE PREPARED
1/28/2014

ROUTE	STATE
270	MO
DISTRICT	SHEET NO.
SL	4
COUNTY	
ST. LOUIS	
JOB NO.	
WRSL270F	
CONTRACT ID.	
PROJECT NO.	
BRIDGE NO.	

1-1 S2 INLET
STA 527+45.08 64.55' LT. OF C
5' X 3' PRECAST D.I. WITH
TYPE S2 COVER
D= 7'-0" WITH 1- 24"
PIPE OPENINGS
CL. 3 EXC. = 18.5 CY
1- 5' X 3' GRATE AND BEARING PLATE

1-2 S1 INLET
STA 527+06 41.73' LT. OF C
5' X 3' PRECAST D.I. WITH
TYPE S COVER
D= 8'-0" WITH 2- 24"
PIPE OPENINGS
CL. 3 EXC. = 18.9 CY
1- 5' X 3' GRATE AND BEARING PLATE

1-3 FES
STA 526+98.70 37.45' RT. OF C
FES WITH 2' PIPE OPENINGS
CL. 3 EXC. = 5.4 CY

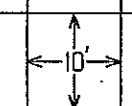


1-1 S-2 TO 1-2 S-1
1 - 41' X 24" GROUP B PIPE

1-2 S-1 TO 1-3 FES
1 - 76' X 24" CLASS III RCP (GASKET TYPE) JACKED

LEGEND

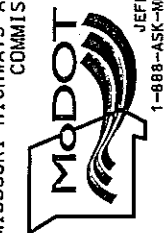
- CLASS III EXCAVATION CULVERTS
- CLASS III EXCAVATION STRUCTURES



DESCRIPTION

DATE

MISSOURI HIGHWAYS AND TRANSPORTATION COMMISSION

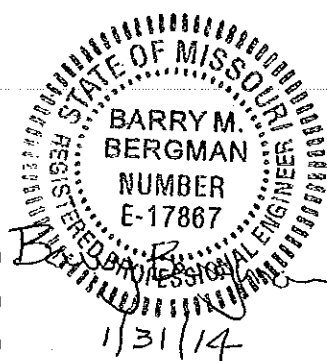


CULVERT SECTION
DES PERES ROAD

SHEET 1 OF 1

IF A SEAL IS PRESENT ON THIS SHEET IT HAS BEEN ELECTRONICALLY SEALED AND DATED.

THIS MEDIA SHOULD NOT BE CONSIDERED A CERTIFIED DOCUMENT.



DATE PREPARED
1/30/2014
ROUTE 270 STATE MO
DISTRICT SL SHEET NO. 6
COUNTY ST LOUIS
JOB NO. WRSL270F
CONTRACT ID.

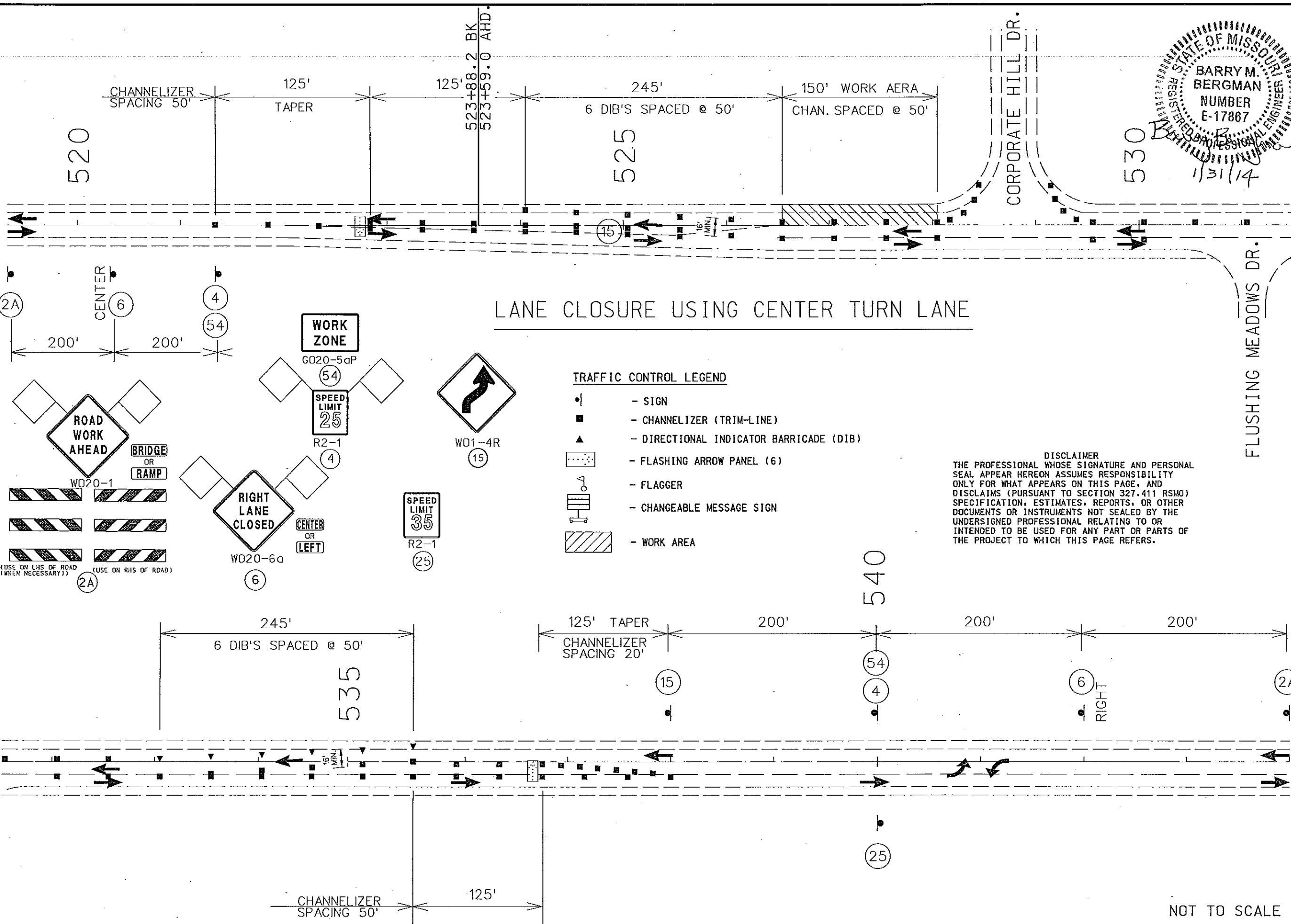
PROJECT NO.
BRIDGE NO.

DATE	DESCRIPTION

MISSOURI HIGHWAYS AND TRANSPORTATION COMMISSION

 105 WEST CAPITOL JEFFERSON CITY, MO 65102
 1-888-ASK-MODOT (1-888-275-6636)

DES PERES ROAD
 TRAFFIC CONTROL PLAN
 SHEET 2 OF 2



LANE CLOSURE USING CENTER TURN LANE

TRAFFIC CONTROL LEGEND

- - SIGN
- - CHANNELIZER (TRIM-LINE)
- ▲ - DIRECTIONAL INDICATOR BARRICADE (DIB)
- ⋯ - FLASHING ARROW PANEL (6)
- ⚡ - FLAGGER
- Ⓜ - CHANGEABLE MESSAGE SIGN
- ▨ - WORK AREA

DISCLAIMER
 THE PROFESSIONAL WHOSE SIGNATURE AND PERSONAL SEAL APPEAR HEREON ASSUMES RESPONSIBILITY ONLY FOR WHAT APPEARS ON THIS PAGE, AND DISCLAIMS (PURSUANT TO SECTION 327.411 RSMO) SPECIFICATION, ESTIMATES, REPORTS, OR OTHER DOCUMENTS OR INSTRUMENTS NOT SEALED BY THE UNDERSIGNED PROFESSIONAL RELATING TO OR INTENDED TO BE USED FOR ANY PART OR PARTS OF THE PROJECT TO WHICH THIS PAGE REFERS.

NOT TO SCALE

IF A SEAL IS PRESENT ON THIS SHEET IT HAS BEEN ELECTRONICALLY SEALED AND DATED.