

VOLVO DOUBLE DRUM COMPACTORS

DD25B

2.6 t 25 hp





PERFORMANCE YOU CAN COUNT ON.



360° visibility

With an optimally positioned sliding seat, angled drum mounts and a sloping hood design, the DD25B provides industry-leading, all-around visibility. Whether rolling forwards or in reverse, the operator has a clear view of the drum edges and surroundings – delivering precise compaction and improved safety.

Introducing the DD25B, a highly efficient double drum compactor designed to increase performance and reduce fuel consumption on small scale compaction projects. Featuring the new Volvo D1.7A engine, this machine meets the strict Stage IV/ Tier 4 Final emissions regulations without adding an exhaust after-treatment system. Experience increased machine performance and enhanced productivity with Volvo.



High performance

With Volvo's high frequency compaction, the DD25B can travel faster while still maintaining the correct impact spacing necessary for high productivity and a smooth finish. The frequency can be adjusted from 3,300 vpm to 4,000 vpm to cater for different applications.



Optimized for efficiency

The new Volvo D1.7A (18.5 kW/25 hp) engine effectively meets the stringent Stage IV/ Tier 4 Final emissions regulations without the cost or complexity of an exhaust after-treatment system. The optimized eccentric system ensures a powerful performance – equivalent to machines fitted with a bigger engine.



Pressurized water system

The DD25B boasts an industry-leading water tank capacity. A rust-proof, pressurized water system provides consistent flow to the front and rear drum surfaces – eliminating asphalt pick-up. Fine filters behind each of the eight spray nozzles minimize clogging and ensure correct fan spray coverage – providing ideal wetting of the drum surface.



Reduced fuel consumption

The Volvo D1.7A engine is perfectly matched to the DD25B's hydraulic system – delivering high performance and a 7% reduction in fuel consumption.

THE VOLVO EXPERIENCE.

Engine compartment

For easy maintenance access, the hinged engine hood tilts forward – providing wide access to the engine and hydraulic components at ground level.

Water level indicator

The operator can easily monitor the water tank level from the seat.

Intermittent water spray

The DD25B boasts an industry-leading water tank capacity. The operator can adjust the time between water sprays to the drums to conserve water and reduce refilling downtime.



Optimized for efficiency

The new Volvo D1.7A engine delivers high performance while meeting the stringent Stage IV/ Tier 4 Final emissions regulations without an exhaust after-treatment system.

Urethane drum wipers

Front and rear drum wipers are made of urethane – increasing effectiveness and component lifetime as well as reducing maintenance requirements.

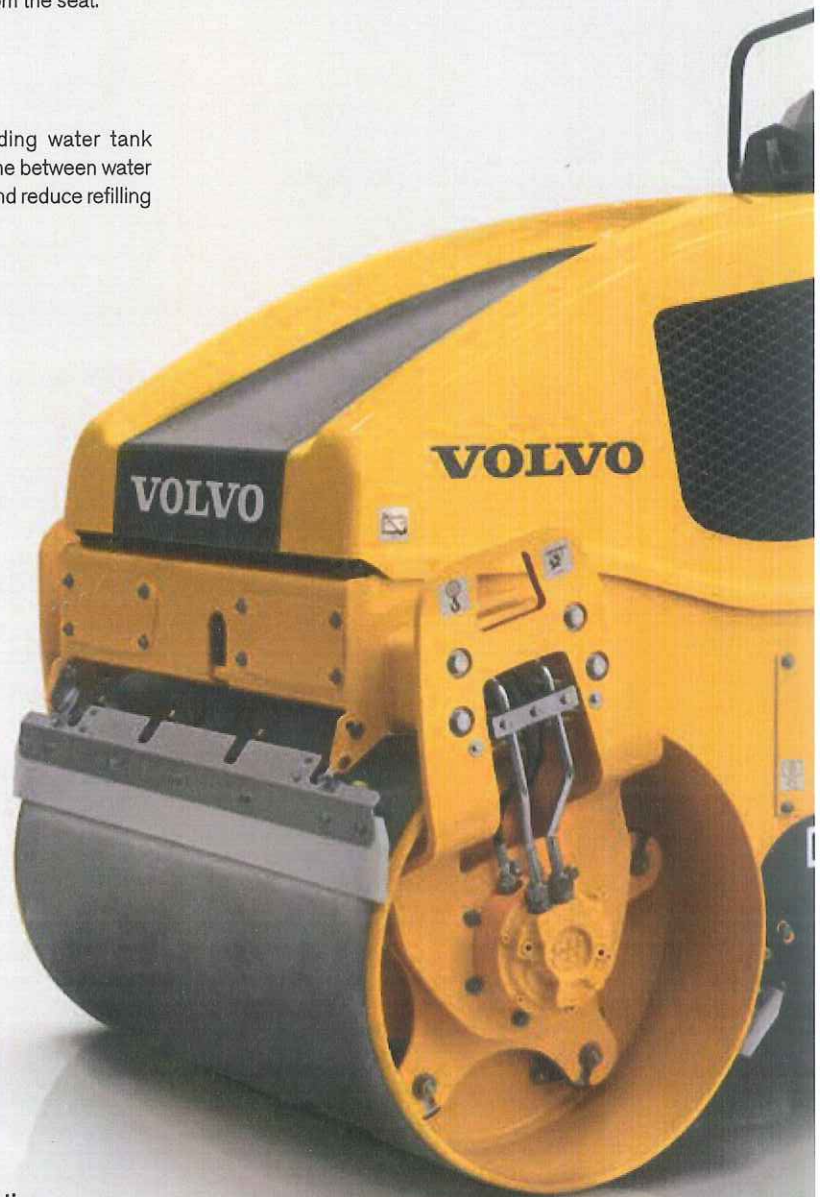
Auto start vibration

Vibration engages automatically when the FSR lever is moved out of neutral and disengages when the lever is put in the stop position. This eliminates the risk of accidental damage to the mat.



Reduced fuel consumption

The Volvo D1.7A engine is perfectly matched to the DD25B's hydraulic system – delivering high performance and a 7% reduction in fuel consumption.





Machined drums

Machined drums with chamfered edges are perfectly round in order to produce a smooth, mark-free mat.



360° visibility

With an optimally positioned sliding seat and a sloping engine hood design, the operator will experience industry-leading, all-around visibility.



High performance

With Volvo's high frequency compaction, the DD25B can travel faster while still maintaining the correct impact spacing necessary for high productivity and a smooth finish.

Quick removal of nozzles

Water nozzles can be quickly removed without the need for tools – increasing machine uptime and water system performance.

Maintenance-free bearings

Maintenance-free eccentric bearings are lubricated for life and built to tolerate high temperatures and rotation speeds.



Pressurized water system

A rust-proof, pressurized water system provides consistent flow to the drum surfaces – eliminating asphalt pick-up.

MAINTAIN YOUR PRODUCTIVITY.

Volvo machines are built to last. That's why all service points on the DD25B are easy to access for fast maintenance and reduced downtime. The lightweight engine hood opens effortlessly for daily inspection. Combined with Volvo's excellent service support, your DD25B will keep you rolling longer.



Easy-access engine compartment

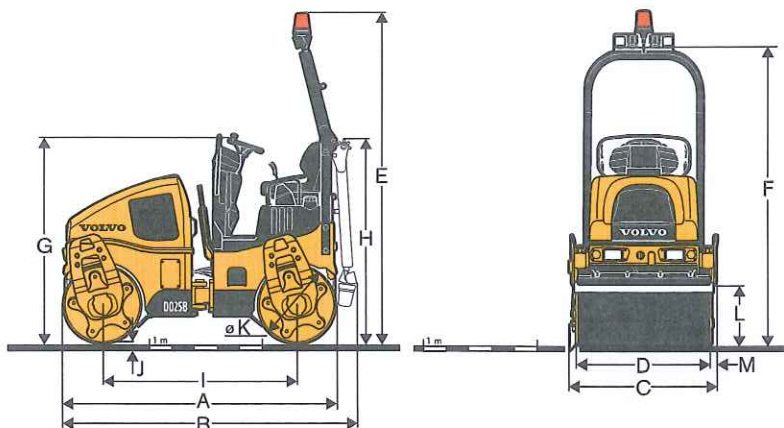
The engine hood can be easily opened for daily maintenance and inspection. The hinged engine hood design is lightweight and tilts forward with the aid of two gas struts giving wide access to the engine and hydraulic components.

Dealer support comes standard

Your local Volvo dealer backs you and your operation with a ready supply of genuine Volvo parts that are perfectly matched to your machine. Your dealer is also ready to help you stay working with expert, trained service and support.

SPECIFICATIONS.

Model			DD25B Narrow Drum		DD25B Wide Drum		
Machine weights (w/ ROPS)							
Operating weight	kg	lb	2 515	5,545	2 620	5,776	
Weight @ front drum	kg	lb	1 211	2,670	1 270	2,800	
Weight @ rear drum	kg	lb	1 304	2,875	1 360	2,998	
Shipping weight	kg	lb	2 359	5,201	2 470	5,445	
Drum							
Width	mm	in	1 000	39.4	1 200	47.2	
Diameter	mm	in	700	27.5	700	27.5	
Shell thickness	mm	in	13	0.51	13	0.51	
Finish	Machined						
Vibration							
Frequency	Hz	vpm	55/66.7	3,300/4,000	55/66.7	3,300/4,000	
Nominal amplitude	mm	in	0.54	0.0210	0.5	0.0197	
Centrifugal force	high	kN	lb	37.5	8,430	40.6	9,127
	low			25.5	5,732	27.7	6,227
Propulsion							
Type	Closed-loop hydrostatic						
Drum drive	Radial piston						
Travel speed	km/h	mph	0 – 10.3	0 – 6.4	0 – 10.3	0 – 6.4	
Engine							
Make / model	Engine Tier 4 Final - Volvo D1.7A						
Engine type	3-cylinder diesel						
Rated power @ installed speed	kW	hp	18.4 @ 2,200 rpm	25 @ 2,200 rpm	18.4 @ 2,200 rpm	25 @ 2,200 rpm	
Electrical	12 volts, 70 A alternator						
Brakes							
Service	Hydrostatic						
Parking secondary	Spring-applied, hydraulic release on each drum						
Water system							
Type	Pressurized						
Nozzles	4 per drum						
Filtration	Inlet and nozzle filtration						
Drum wipers	Spring-loaded, self-adjusting urethane wipers						
Water tank capacity	l	gal	260	69	260	69	
Miscellaneous							
Articulation angle				+ / - 30			
Oscillation angle				+ / - 10			
Inside turning radius (to drum edge)	mm	in	2 800	110	2 800	110	
Fuel tank capacity	l	gal	40	10.6	40	10.6	
Hydraulic oil capacity	l	gal	27	7.2	27	7.2	
Gradeability (theoretical)			%	30			



DIMENSIONS	DD25B Narrow Drum		DD25B Wide Drum	
	mm	in	mm	in
A	2 420	95.3	2 420	95.3
B	2 540	100.0	2 540	100.0
C	1 090	42.9	1 290	50.8
D	1 000	39.4	1 200	47.2
E	2 955	116.3	2 955	116.3
F	2 650	104.3	2 650	104.3
G	1 870	73.6	1 870	73.6
H	2 020	79.5	2 020	79.5
I	1 720	67.7	1 720	67.7
J	13	0.5	13	0.5
K	700	27.6	700	27.6
L	490	19.3	490	19.3
M	45	1.8	45	1.8



VOLVO CONSTRUCTION EQUIPMENT

Volvo Construction Equipment is different. Our machines are designed, built and supported in a different way. That difference comes from an engineering heritage of over 180 years. A heritage of thinking first about the people who actually use the machines. About how to help them be safer, more comfortable, more productive. About the environment we all share. The result of that thinking is a growing range of machines and a global support network dedicated to helping you do more. People around the world are proud to use Volvo.

Not all products are available in all markets. Under our policy of continuous improvement, we reserve the right to change specifications and design without prior notice. The illustrations do not necessarily show the standard version of the machine.

VOLVO

Volvo Construction Equipment
www.volvoce.com

Ref. No. VOE2210009320
Printed in USA, 01/2014
Volvo, Shippensburg
Copyright © 2014 Volvo

English-22
USA

Asphalt Compaction

DD70

OPTIONS

BASIC

High Frequency

High Frequency

DD18001

7,767.00

☐

-

ENG

Speedlimiter

Speed limiter

DD35001

155.00

☐

-

CAB

Steering Knob

Steering knob

DD43001

43.00

☐

-

EL

Gauges

Gauge package

DD52005

1,635.00

☐

-

Sensors

Infrared temperature sensor

DD53002

3,002.00

☐

-

Light Features

HID Lights

DD59905

6,894.00

☐

-

HYD

Hydraulic Oil

Biodegradable oil

DD60001

822.00

☐

-

SERV

Tool Kit

Tool kit (metric tools)

DD73001

2,353.00

☐

-

Language Operator's Manual

Manual, Spanish

DD74001

0.00

☐

-

Manual, French

DD74004

0.00

☐

-

OTHER

Scrapers

Inside urethane drum wiper assembly

DD80002

565.00

☐

-

Cocoa mats

DD80004

1,557.00

☐

-

Special Paint

Special paint

DD81001

2,125.00

☐

-

Offset Swivel

Offset drum swivel - standard unit (ROPS)

DD85001

4,136.00

☐

-

Decal Kit

French Decals

DD89108

0.00

☐

-

Spanish Decals

DD89114

0.00

☐

-

These prices are confidential and any unauthorized disclosure, use (whole or in part) is prohibited.
Prices and specifications are subject to change without notice.

STANDARD EQUIPMENT: DD70 (New)

Safety

Anti-slip steps and platform
Handrails on steps and platform
One Meter by One Meter Operator
visibility all around the unit
Horn
Emergency stop switch
Seat proximity switch
Retractable 3-inch safety belt
Roll over Protective Structure (ROPS)
Articulation lock bar

Engine

Kubota V3600 T-E3B Tier 3
4 Cylinder, Direct Injection
84.5 HP @ 2650 rpm

Electrical system

12 Volt
90 Amp alternator
800 CCA Battery
Battery disconnect switch
F & R ROPS mounted work lights

Brake system

Dynamic hydrostatic through
propulsion system
Spring-applied, hydraulically release (SAHR)
on front and rear drum
Parking brake with test switch

Drivetrain

Closed-loop hydrostatic parallel circuit
to both drums
LSHT drum drive motors

Comfort

Five-position rotating operator station
Fully adjustable sliding seat
Propulsion control lever with vibe on/off switch

Operator information interface

Instrument panel light
Fuel gauge
Check engine light
High water temperature indicator
Low engine oil pressure indicator
Low alternator charge indicator
Battery condition light
3 Position water flow control switch
Vibratory manual / automatic switch
Glow plug preheater indicator
Drum vibratory selector switch
Speedometer/impact meter/hourmeter
Frame offset indicator light - optional
Strobe light switch - optional
Hi/lo engine RPM selector switch
Work light switch
VPM gauge - optional
Battery volt meter - optional
Hyd oil temperature - optional
Engine oil pressure - optional
Engine water temp - optional
Engine tachometer - optional
Amplitude adjusting wheel

Water System

Water tank capacity 205 gallon
2 (per drum) Diaphragm pump
1.2 gpm @ 40psi
Filter - 80 mesh
Nozzles:
Primary - 7 per drum with 100 mesh screens
Aux - 5 per drum with 100 mesh screens
Tank inlet filter
Flow control lever

Drum

1448mm (57")

VOLVO DOUBLE DRUM COMPACTORS

DD70, DD70HF



MORE CARE. BUILT IN.



HIGH PERFORMANCE, HIGH VISIBILITY

It's easy to see why the DD70 and DD70HF vibratory asphalt compactors work so well on roadways and other medium-sized paving jobs. Both the standard model and the DD70HF feature unobstructed visibility of the drum edges and work surface, along with the highest rolling productivity in their weight class. These models are easy to operate, offer adjustable vibration speed settings, an ergonomic console, and the most reliable water spray system in the industry. The operating weight of the DD70 compactors also meets most government static rolling requirements, so you get the most out of your machines.

Performance Features

- High frequency vibration system offers faster rolling speeds for increased production while maintaining proper drum impact spacing
- Eight amplitude settings achieve required compaction throughout a range of lifts and/or stiffer mix designs
- Eccentric rotation automatically matches direction of travel, improving smoothness
- Patented Impact Spacing Meter provides a visual reference for speed control to maintain proper impact spacing, resulting in consistent smoothness
- Two complete, independent water systems include triple water filtration, four water pumps, four spray bars, and variable waterflow

Serviceability

- Engine, hydraulics, cooling package and electrical system components are easily accessed through strong, light-weight composite gull-wing doors
- Maintenance and service access is unobstructed and at ground level
- Color-coded service chart identifies check point locations, proper lubricants and service intervals

Visibility

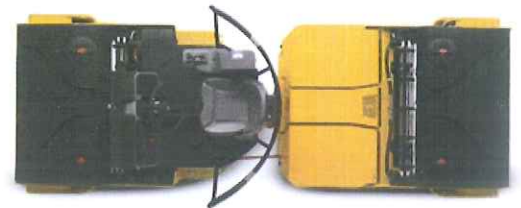
- Five-position rotating operator's station with an adjustable seat provides a smooth ride and comfortable operating environment
- ONE METER BY ONE METER visibility all around the unit

Additional Standard Features

- Four vibration speed settings for improved control
- Exclusive machined drums with chamfered, radius drum edges to maintain uniform smoothness
- High curb and narrow wall clearance
- ROPS / FOPS with integral work lights and operator seat belt
- Superior drum spray system for maximum productivity
 - Infinitely variable waterflow control to conserve water
 - Independent primary and secondary spray systems on each drum

Available Options

- | | |
|-------------------------------------|--------------------------|
| - Biodegradable oil | - Inside drum wiper bars |
| - Cocoa mats | - Mat temperature sensor |
| - Edge compactor, cutter | - Offset drum |
| - Gauge package | - Speed limiter |
| - High intensity discharge lighting | - Strobe light |
| | - Urethane wiper |



SPECIFICATIONS

Model		DD70	DD70HF
Machine Weight (w/ ROPS / FOPS)			
Operating Weight	kg (lb)	6 747 (14,875)	6 747 (14,875)
Static Weight @ Front Drum	kg (lb)	3 305 (7,286)	3 305 (7,286)
Static Weight @ Rear Drum	kg (lb)	3 442 (7,589)	3 442 (7,589)
Shipping Weight	kg (lb)	6 273 (13,830)	6 273 (13,830)
Dimensions			
Overall Length	mm (in)	4 470 (176)	4 470 (176)
Overall Width	mm (in)	1 626 (64)	1 626 (64)
Overall Height (top of steering wheel)	mm (in)	2 200 (86.6)	2 200 (86.6)
Overall Height (top of ROPS / FOPS)	mm (in)	2 832 (111.5)	2 832 (111.5)
Drum Base	mm (in)	2 972 (117)	2 972 (117)
Curb Clearance	mm (in)	559 (22)	559 (22)
Inside Turning Radius (to drum edge)	mm (in)	3 582 (141)	3 582 (141)
Drums			
Width	mm (in)	1 448 (57)	1 448 (57)
Diameter	mm (in)	1 046 (41.2)	1 046 (41.2)
Shell Thickness (nominal)	mm (in)	20 (0.8)	20 (0.8)
Finish		Machined surface; chamfered and radiused edges	
Vibration			
Frequency	Hz (vpm)	55 (3,300)	66,7 (4,000)
Amplitude	mm (in)	0,27 - 0,54 (0.011 - 0.021)	0,16 - 0,43 (0.006 - 0.017)
Centrifugal Force Range	kN (lb)	40 - 80 (8,940 - 17,970)	35 - 94 (7,820 - 21,080)
Amplitude Settings		8	8
Propulsion			
Type		Closed-loop hydrostatic, parallel circuit to both drums	
Drum Drive		Heavy-duty radial piston LSHT motors	
Travel Speed	km/h (mph)	0 - 11,3 (0 - 7)	0 - 11,3 (0 - 7)
Engine			
Make / Model		Kubota V3600 T-E3B Tier 3	
Engine Type		Turbocharged / cooled EGR, 4 cylinder	
Rated Power @ 2,600 rpm	kW (hp)	63 (84.5)	63 (84.5)
Electrical		12 volts DC, negative ground; 90 A alternator	
Battery		1 absorbed electrolytic, 800 CCA	
Brakes			
Service		Dynamic hydrostatic through propulsion system	
Parking / Secondary		SAHR on front-drum and rear-drum drive motors	
Water System			
Type		Pressure spray drum wetting system with LDPE water tanks	
Pumps		Diaphragm water pumps, primary and secondary for each drum	
Spray Bars		Primary and secondary spray bars for each drum	
Nozzles		Hand-serviceable fan spray nozzles; 5 per spray bar	
Filtration		Basket strainer each tank, water filter each pump, fine filter each nozzle	
Drum Wipers		Rubber wiper for each drum	
Water Tank Capacity	l (gal)	776 (205)	776 (205)
Miscellaneous			
Articulation Angle (center pivot steering)		+ / - 40°	+ / - 40°
Oscillation Angle		+ / - 10°	+ / - 10°
Fuel Capacity	l (gal)	140 (37)	140 (37)
Hydraulic Oil Capacity	l (gal)	64 (17)	64 (17)
Gradeability (theoretical)		40%	40%



Volvo Construction Equipment is different. Our machines are designed, built and supported in a different way. That difference comes from an engineering heritage of over 175 years. A heritage of thinking first about the people who actually use the machines. About how to help them be safer, more comfortable, more productive. About the environment we all share. The result of that thinking is a growing range of machines and a global support network dedicated to helping you do more. People around the world are proud to use Volvo. And we're proud of what makes Volvo different – **More care. Built in.**

Not all products are available in all markets. Under our policy of continuous improvement, we reserve the right to change specifications and design without prior notice. The illustrations do not necessarily show the standard version of the machine.

VOLVO

Volvo Construction Equipment
www.volvoce.com/na



Mixed Sources
 Product group from well-managed
 forests, controlled sources and
 recycled wood or fiber
www.fsc.org Cert no. SW-COC-003918
 © 1996 Forest Stewardship Council

Ref. No. VOE22C1004033
 Printed in USA 06/10
 Volvo, Asheville
 Copyright © 2010 Volvo

English
 USA

Asphalt Compaction

PT125

OPTIONS

Tire

Tires

Michelin radial tire, smooth asphalt

DD20001

5,745.00

☐

-

Engine

Precleaner

Air precleaner

DD34001

337.00

☐

-

Cab

Rops Selection

ROPS/FOPS (4-post) in lieu of ROPS arch

DD41003

4,084.00

☐

-

Electric

Lights

Turn signals/flashers/stop lights

DD50016

1,057.00

☐

-

Signal/Haz Lights-W/WO Stplght

DD50023

3,060.00

☐

-

Gauges

Speedometer

DD52001

1,312.00

☐

-

Hydraulic oil temp gauge

DD52002

488.00

☐

-

Electrical system voltage gauge

DD52003

473.00

☐

-

Fuel level gauge, electrical

DD52004

488.00

☐

-

Engine air filter restriction gauge

DD52006

188.00

☐

-

Engine coolant temperature gauge

DD52008

488.00

☐

-

Engine oil pressure gauge

DD52009

488.00

☐

-

Beacon

Beacon for small asphalt/FOPS Mounted

DD56001

1,260.00

☐

-

Strobe light

DD56002

441.00

☐

-

Worklights

Work Lights: (2 F & 2R), Frame Mounted

DD59101

1,166.00

☐

-

Hazard and Turn Signals

Hazard and turn signal option

DD59201

969.00

☐

-

Service

Tool Kit

Tool kit (metric tools)

DD73001

654.00

☐

-

Language Operator's Manual

Manual, Spanish

DD74001

48.00

☐

-

Other

Scrapers

Tire scrapers, nylon

DD80005

2,488.00

☐

-

Tire scrapers, steel

DD80006

1,872.00

☐

-

Special Paint

Special paint

DD81001

2,189.00

☐

-

Heat Shield

Heat retention skirts

DD84001

3,959.00

☐

-

These prices are confidential and any unauthorized disclosure, use (whole or in part) is prohibited.
Prices and specifications are subject to change without notice.

STANDARD EQUIPMENT: PT125

Safety

Anti-slip steps and platforms
Handrails on steps and platform
Horn
Emergency stop switch
Retractable 3-inch safety belt
Roll over Protective Structure (ROPS)

Drivetrain

2 speed hydrostatic drive acting on
four rear wheels

Tires

7.5 - 15 14ply bias tires smooth tread (9)
Cocoa mats on each tire

Engine

Kubota V3600-T-E3B Tier 3
4 Cylinder, Direct Injection
Turbocharged
84.5 HP @ 2820 rpm

Electrical system

12 Volt
90 A alternator
Battery disconnect switch
900 CCA Battery

Comfort

Adjustable seat

Operator information interface

Brake pressure indicator
High water temperature indicator
Low engine oil pressure indicator
Low alternator charge indicator
Hi-Low speed range indicator
Park brake switch
Water spray switch
Hourmeter

Water System

100 gal capacity
Diaphragm pump
1.2 gpm @ 40psi
Filter - 80 mesh
Nozzles - 1 per tire with 100 mesh screens
Tank inlet filter

Brake system

SAHR acting on rear drive tires

PNEUMATIC TIRE COMPACTOR
PT125R



MORE CARE. BUILT IN.



THE COMPACTOR FOR YOUR KNEADING REQUIREMENTS

The Volvo PT125R is a nine-wheel pneumatic tire compactor, typically utilized on hot mix asphalt and on chip-seal applications. The four front tires are staggered in position to provide overlap with the five rear tires, resulting in complete material coverage for consistent texture and appearance. Uniform compaction, even on irregular surfaces, is achieved using tire oscillation to maintain uniform tire contact pressure.

Performance Features

- Back-up alarm
- Lay-down ROPS for transport
- High wheel-loading capability with 14-ply tires
- Horn
- Hour meter
- Hydrostatic propulsion system
- Indicator lights for battery discharge, low engine oil pressure, high engine coolant temperature and parking brake engagement
- Pressurized water system with individual tire cocoa mats
- Seat belt

Selected Options

- Audible alarm
- Engine air precleaner
- Four-way flashers and turn signals
- Gauges for fuel level, voltmeter, hydraulic oil temperature, engine coolant temperature, engine oil pressure, air filter restriction
- Heat skirts
- Radial tires
- ROPS / FOPS
- Rotating beacon light
- Speedometer
- Tire scrapers
- Vandal cover for console and engine
- Work lights

Tires

The PT125R comes standard with four front and five rear 190,5 mm x 381 mm (**7.5 in x 15 in**), 14-ply tires. The front tire pairs each oscillate $\pm 3^\circ$.

Water System

The PT125R comes standard with a 379 l (**100 gal**) pressurized water system utilizing an electric diaphragm pump. Each tire has one spray nozzle with a 100 mesh filter in addition to the primary 80 mesh filter and tank inlet strainer.



SPECIFICATIONS

Model		PT125R	
Machine Weights (w/ ROPS / FOPS)			
Shipping Weight	kg (lb)	4 129 (9,105)	
Operating Weight	kg (lb) Unballasted	4 326 (9,540)	
	With water ballast	7 708 (17,156)	
	With wet sand ballast	11 242 (24,790)	
	With concentrate ballast	12 625 (27,840)	
Machine Dimensions			
Length	mm (in)	3 892 (153.2)	
Width	mm (in)	1 980 (78)	
Height	mm (in) Top of steering wheel	2 185 (86)	
	Top of ROPS	3 225 (127)	
	Top of ROPS / FOPS	2 912 (115)	
Wheelbase	mm (in)	2 921 (114.6)	
Curb Clearance	mm (in)	330 (13.0)	
Inside Turning Radius	mm (in)	3 848 (151.5)	
Compaction			
Rolling Width	mm (in)	1 727 (68)	
Tire Overlap	mm (in)	12 (0.5)	
Wheel Load Per Tire (avg)	kg (lb) Unballasted	480,8 (1,060)	
	With water ballast	866,4 (1,910)	
	With gravel	1 152,1 (2,540)	
	With wet sand ballast	1 252,0 (2,760)	
	With concentrate ballast	1 406,1 (3,100)	
Ballast Compartment	m³ (cu ft)	3,5 (122)	
Propulsion			
System Type		Hydrostatic drive	
Drive		Direct at 4 rear wheels	
Travel Speed	km/h (mph) High	24,8 (15.4)	
	Low	12,4 (7.7)	
Engine			
Make & Model		Kubota V3600-T-E3B Tier 3	
Electrical System		12 volts DC, negative ground, 90 A alternator	
Rated Power @ Installed Speed	kW (hp)	63 (84.5)	
Miscellaneous			
Fuel Capacity	l (gal)	102 (27)	
Hydraulic Oil Capacity	l (gal)	61 (16)	
Gradeability (theoretical)		31%	

GROUND CONTACT PRESSURES for 190,5 mm x 381 mm (7.50 in x 15 in) 14 Ply Smooth Tread Compactor Tires							
		Tire Pressure kPa (PSI)					
		241,3 (35)	344,7 (50)	482,6 (70)	620,5 (90)	758,4 (110)	896,3 (130)
Ballast	Wheel Load	Ground Contact Pressure					
None	480,8 kg (1,060 lb)	317,2 (46)	344,7 (50)	386,1 (56)	420,6 (61)	468,8 (68)	510,2 (74)
Water	866,4 kg (1,910 lb)	372,3 (54)	406,8 (59)	448,1 (65)	496,4 (72)	537,8 (78)	592,9 (86)
Gravel	1 152,1 kg (2,540 lb)	393,0 (57)	434,4 (63)	482,6 (70)	524,0 (76)	572,3 (83)	620,5 (90)
Wet Sand	1 252,0 kg (2,760 lb)	399,9 (58)	441,3 (64)	489,5 (71)	537,8 (78)	586,1 (85)	634,3 (92)
Concentrate	1 406,1 kg (3,100 lb)	413,7 (60)	455,1 (66)	503,3 (73)	551,6 (80)	599,8 (87)	648,1 (94)

Product improvement is a continuing goal at Volvo. Designs and specifications are subject to change without notice or obligation.



Volvo Construction Equipment is different. Our machines are designed, built and supported in a different way. That difference comes from an engineering heritage of over 175 years. A heritage of thinking first about the people who actually use the machines. About how to help them be safer, more comfortable, more productive. About the environment we all share. The result of that thinking is a growing range of machines and a global support network dedicated to helping you do more. People around the world are proud to use Volvo. And we're proud of what makes Volvo different – **More care. Built in.**

Not all products are available in all markets. Under our policy of continuous improvement, we reserve the right to change specifications and design without prior notice. The illustrations do not necessarily show the standard version of the machine.

VOLVO

Volvo Construction Equipment
www.volvoce.com/na

 **Mixed Sources**
 Product group from well-managed
 forests, controlled sources and
 recycled wood or fiber
www.fsc.org Cert no. SW-COC-009918
 © 1996 Forest Stewardship Council

Ref. No. VOE22B1004028
 Printed in USA 08/09 – 3,0
 Volvo, Asheville
 Copyright © 2009 Volvo

English
 USA