



Cat[®]

CB22B, CB24B, CB24B XT CB32B, CC24B

UTILITY COMPACTORS

FEATURES:

■ Simple Operation

- Easy access due to logically placed handles and lower platform height
- Sliding seat and spacious platform provide comfort and control
- Dual propel lever option enhances control from either side
- Intuitive, multi-function control panel with vandal protection enables good performance
- Easy viewing LCD display and vibrant LED lights on the control panel simplify operation for both day and night operation
- Easy folding ROPS and canopy, can be lowered without tools

■ Efficient Compaction Performance

- Excellent drum-edge visibility due to longitudinal engine mount and narrow frame design; improves control for better coverage and compaction results
- Increased drum diameter for smoother compaction performance
- High amplitude and three frequency selections deliver excellent compaction results and lower sound levels
- 50 mm (2") drum offset capability enhances control near curbs and other obstacles while offering more coverage
- Ballast options increase flexibility and compaction performance
- Extended 3 year/3,000 hour vibratory drum maintenance interval minimizes lifetime operating costs
- CC24B is equipped with pneumatic tires that provide a kneading action for a tight mat finish

■ Best-in-Class Water Spray System

- 235 L (62 gal) water tank can last up to 10 hours without refilling
* Note: CC24B water tank capacity is 195 L (52 gal)
- Variable spray modes optimize water usage
- Triple filtration delivers reliable performance and simplifies service
- Self-adjusting, spring-loaded scrapers keep the drum clean, distribute water, and lower water consumption
- Anti-freeze option provides protection in cool weather
- Single drain port simplifies service requirements

■ Optimized Power

- Powerful Cat[®] C1.5 engine
- Eco-mode and electronic engine control reduce fuel consumption
- Traction control option, pin-on design offers quick installation
- Fast travel speed of 12.5 kph (8 mph) for good mobility
* Note: CC24B maximum travel speed is 10.5 kph (6.5 mph)

■ Designed for Rental

- Easy operation with intuitive controls
- Extensive legroom to suit a variety of operators
- Durable components maximize uptime and lower lifetime operating costs
- Fuel efficient engine
- Low sound levels for nighttime operation
- Product Link[™] ready for simple remote monitoring

- 1 Intuitive Console with LCD Display
- 2 Narrow Frame Design Enhances Visibility
- 3 Eco-mode
- 4 Roomy Operating Environment
- 5 Dual Propel Lever (Option)
- 6 Ballast Addition (Option)
- 7 50 mm (2") Drum Offset
- 8 Reliable Water Spray System
- 9 Foldable ROPS and Canopy (Options)



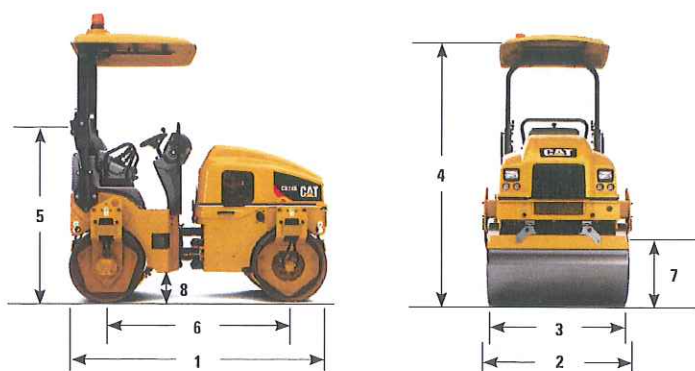
CB22B, CB24B, CB24B XT, CB32B, CC24B Utility Compactors

Specifications

	CB22B	CB24B	CB24B XT	CB32B	CB32B w/Ballast	CC24B
Cat C1.5 Engine - kW (hp)	27.0 (36.2)* / 24.4 (32.7)**					
Operating Weight - kg (lb)	2553 (5,629)	2723 (6,003)	3123 (6,885)	2808 (6,190)	3208 (7,071)	2441 (5,380)
Max. Operating Weight - kg (lb)	2731 (6,020)	2901 (6,395)	3301 (7,276)	2985 (6,581)	3385 (7,462)	2618 (5,772)
Static Linear Load - kg/cm (pli)	12.8 (72)	11.3 (63)	13.0 (73)	10.8 (61)	12.3 (69)	10.2 (57)
Amplitude - mm (in)	0.53 (0.021)					
Frequency - Hz (vpm)	63/52/42 (3,780/3,120/2,520)					
Centrifugal Force - kN (lbF)	High	28.8 (6,475)	34.7 (7,801)	34.7 (7,801)	37.1 (8,340)	34.7 (7,801)
	Med	19.6 (4,406)	23.7 (5,328)	23.7 (5,328)	25.3 (5,688)	23.7 (5,328)
	Low	12.8 (2,878)	15.4 (3,462)	15.4 (3,462)	16.5 (3,709)	15.4 (3,462)

* Turbo-charged, meets U.S. EPA Tier 4 Final emissions

** Meets emissions equivalent to U.S. EPA Tier 4 Interim and EU Stage IIIA standards; Note: E.U. Stage IIIB emissions standards do not apply to this power ratings class



OPTIONAL EQUIPMENT

- Antifreeze-ready, (water spray)
- Ballast
- Battery disconnect switch
- Bio-hydraulic oil
- Canopy, fixed
- Canopy, folding
- Cup holders
- Dual propel levers
- LED Lights
- Non-suspension seat
- Product Link
- ROPS, fixed
- ROPS, foldable
- Suspension seat w/safety switch
- Sliding seat
- Traction control (not available on CC24B)

Dimensions

	CB22B	CB24B	CB24B XT	CB32B	CC24B
1 Overall length - mm (in)	2575 (101)	2575 (101)	2575 (101)	2575 (101)	2575 (101)
2 Overall width - mm (in)	1112 (44)	1312 (52)	1312 (52)	1412 (56)	1312 (52)
3 Drum width - mm (in)	1000 (39")	1200 (47)	1200 (47)	1300 (51)	1200 (47)
Drum offset - mm (in)	50 (2)	50 (2)	50 (2)	50 (2)	50 (2)
Drum shell thickness - mm (in)	14 (0.6)	14 (0.6)	14 (0.6)	14 (0.6)	14 (0.6)
Drum diameter - mm (in)	720 (28)	720 (28)	720 (28)	720 (28)	720 (28)
4 Height at ROPS/FOPS w/canopy - mm (in)	2595 (102)	2595 (102)	2595 (102)	2595 (102)	2595 (102)
Height at ROPS/FOPS w/canopy - mm (in)	2700 (106)	2700 (106)	2700 (106)	2700 (106)	2700 (106)
5 Transport height (w/foldable ROPS) - mm (in)	1800 mm (71)	1800 mm (71)	1800 mm (71)	1800 mm (71)	1800 mm (71)
6 Wheelbase - mm (in)	1800 mm (71)	1800 mm (71)	1800 mm (71)	1800 mm (71)	1800 mm (71)
7 Curb clearance - mm (in)	500 mm (20)	500 mm (20)	500 mm (20)	500 mm (20)	500 mm (20)
8 Ground clearance - mm (in)	285 mm (11)	285 mm (11)	285 mm (11)	285 mm (11)	285 mm (11)

For more complete information on Cat products, dealer services, and industry solutions, visit us on the web at www.cat.com

QEHQ1699-03 (2/14)

Materials and specifications are subject to change without notice. Featured machines in photos may include additional equipment.

©2014 Caterpillar Inc.
All Rights Reserved.

CAT, CATERPILLAR, ACERT, BUILT FOR IT, SAFETY.CAT.COM, their respective logos, "Caterpillar Yellow" and the "Power Edge" trade dress, as well as corporate and product identity used herein, are trademarks of Caterpillar and may not be used without permission.



Product ID: CB24B

**CB32B VIBRATORY ASPHALT COMPACTOR
RANTIGNY, FRANCE**Ship Weight
lbsLIST PRICE
AT PO ENTRY

Standard Equipment:

Caterpillar O-ring face-seals couplings
Product link ready**POWERTRAIN**Hydrostatic transmission
Service and parking brakes**ELECTRICAL**Engine start switch with auto preheat
Backup alarm and warning horn
65-ampere alternator
12-volt electric starting
Maintenance free 70 AH battery, 880 amp
Light roading and working**OPERATOR ENVIRONMENT**Gauges : LCD display with fuel level,
hour meter, and engine coolant
temperature.
Operator warning system indicators :
Parking brake engaged
Hydraulic oil temperature high
Engine coolant temperature high
Electrical system voltage low
Engine oil pressure low
Vibration activated
Engine preheat
Lockable, vandalism guard for instrument
panel.
Travel control, single lever
Seat with :
Fore and aft adjustment
Draining capability
Retractable seat belt 50.8mm/2inch
Central and Side handrail for easy and
safe access to the machine
Steering wheel spinner
12-volt power points**DRUMS**Two smooth drums : 1300mm / 51.2 inch
wide x 720mm / 28.3 inch diameter
Selection of front drum, rear drum or
both drum vibration
Pressurized drum watering system with :
Continuous or intermittent modes
Water tank with low level sensor
2 x retractable, spring-loaded, self
adjusting scrapers per drum**OTHER STANDARD EQUIPMENT**Locking engine enclosure
Sight gauge for hyd. tank level
Air restriction indicator
Fuel tank
4 transport tie-down and 4 lift points
6 Quick connect hyd. pressure test ports
+ 1 SOS port

CB32B VIBRATORY ASPHALT COMPACTOR
RANTIGNY, FRANCEShip Weight
lbsLIST PRICE
AT PO ENTRY

ORDERING INSTRUCTIONS

For an explanation of Lane Strategy and ordering instructions please refer to the sales model "GENERAL" posted in the web price list.

You must order your machine from Lane 1 or Lane 3.
The lane you order from will determine capability to order additional attachments and service level you will receive.

LANE 1 DISTRIBUTION CENTER ARRANGEMENTS

If no reference number is listed, a Lane 1 configuration is not available.

Distribution Center Arrangement (DCA) reference numbers for this model may not be used to order machine from the factory, they are only valid to order machines from a Product Distribution Center (PDC).

LANE 3 FACTORY ARRANGEMENTS

If no reference number is listed, a Lane 3 Configuration is not available

364-2343	CB32B UTILITY COMPACTOR 4,312	\$52,350
	Double drum vibratory compactor with 1300mm / 51 inch drum width	
0G-0293	CB32B MISC MATERIAL CMR S.A. 0	NC
	Use this as the top level reference number when ordering miscellaneous material for CB32B without ordering a machine.	

NOTE: We recommend and strongly encourage any Misc. Matl. Order ship loose item, less than \$500 list price, be ordered through parts distribution system.

USE	REF NO.	LANE 2 / 3 MANDATORY	Ship Weight lbs	LIST PRICE AT PO ENTRY
-----	------------	----------------------	--------------------	---------------------------

LANE SELECTION

0P-9003 **LANE 3 ORDER** 0 NC

NOTE
IMPORTANT
Order must include one selection from every chapter of the following
Mandatory Attachments.
POWERTRAIN
HYDRAULICS
OPERATOR ENVIRONMENT
TECHNOLOGY PRODUCTS
OPERATION AND MAINTENANCE MANUAL
PICTOGRAPH FILMS
ASSOCIATED PACKING NUMBERS

POWERTRAIN**ENGINE-LANE 3 ONLY**

L 364-2272 **ENGINE T4F** 750 NC
Meets US EPA Tier 4 Final emissions, turbo-charged.
FOR USE WITH: LANE 3 ONLY

HYDRAULICS**PROPEL SELECTION-LANE 3 ONLY**

L 364-2353 **PROPEL, STANDARD** 245 NC
FOR USE WITH: LANE 3 ONLY
L 364-2354 **CONTROL, TRACTION** 276 \$1,680
Flow divider between front and rear drum for improved traction and
minimized drum spinning
FOR USE WITH: LANE 3 ONLY

OIL SELECTION-LANE 3 ONLY

L 364-2282 **HYDRAULIC OIL, STANDARD** 119 NC
Cat standard hydraulic oil.
FOR USE WITH: LANE 3 ONLY
L 364-2283 **OIL, BIO HYDR, FACTORY FILLED** 126 \$760
This Hydraulic Environmental Ester Synthetic oil is recommended
for hydraulic system when environmental compliance is required
or desired. Factory filled.
FOR USE WITH: LANE 3 ONLY

ELECTRICAL**LIGHTING**

L 432-6053 **LIGHTING PACKAGE, STANDARD** 11 NC
Standard halogen lighting package.
FOR USE WITH: LANE 3 ONLY

USE	REF NO.	LANE 2 / 3 MANDATORY	Ship Weight lbs	LIST PRICE AT PO ENTRY
-----	------------	----------------------	--------------------	---------------------------

ELECTRICAL (CONT.)**LIGHTING (Cont.)**

L	450-0906	LIGHTING PACKAGE, LED 13 LED lighting package consisting of two front LED headlights, one single LED rear working light, and two LED rear braking/turn signal lights. FOR USE WITH: LANE 3 ONLY		\$655
---	----------	--	--	-------

OPERATOR ENVIRONMENT**SEAT SELECTION-LANE 3 ONLY**

L	361-5825	SEAT, NON SUSPENSION 20 FOR USE WITH: LANE 3 ONLY CANNOT BE USED WITH: EC COUNTRIES		NC
L	364-2277	SEAT, WITH SAFETY SWITCH 24 Includes suspension seat with adjustable, foldable seat back and seat switch MANDATORY IN EC COUNTRIES FOR USE WITH: LANE 3 ONLY		\$540

SEAT BELT SELECTION-LANE 3 ONLY

L	376-7962	BELT, SEAT, 2" SUSPENSION 0 FOR USE WITH: LANE 3 ONLY		NC
L	276-6019	BELT, SEAT, 3" SUSPENSION 0 FOR USE WITH: LANE 3 ONLY		\$142

SEAT SUPPORT SELECTION-LANE 3 ONLY

L	364-2278	SUPPORT, FIXED FOR SEAT 44 FOR USE WITH: LANE 3 ONLY		NC
P	364-2279	SUPPORT, SLIDING FOR SEAT 49 Allows ability to slide seat laterally to either side of the machine providing better visibility on both drum edges FOR USE WITH: LANE 3 ONLY		\$730

ROPS SELECTION-LANE 3 ONLY

P	364-2292	ROPS, FIXED 119 FOR USE WITH: LANE 3 ONLY		\$1,450
P	364-2287	ROPS, FOLDABLE 121 FOR USE WITH: LANE 3 ONLY		\$1,735
P	364-2286	NO ROPS 0 FOR USE WITH: LANE 3 ONLY CANNOT BE USED WITH: EC COUNTRIES		NC

TECHNOLOGY PRODUCTS**TRAVEL CONTROL-LANE 3 ONLY**

L	432-8451	TRAVEL CONTROL, COVER GP 0 This package includes a left side cover. FOR USE WITH: LANE 3 ONLY		NC
---	----------	--	--	----

USE	REF NO.	LANE 2 / 3 MANDATORY	Ship Weight lbs	LIST PRICE AT PO ENTRY
-----	------------	----------------------	--------------------	---------------------------

TECHNOLOGY PRODUCTS (CONT.)**TRAVEL CONTROL-LANE 3 ONLY (Cont.)**

L	361-5794	TRAVEL CONTROL, DUAL LEVER	11 0	\$835 \$835 NI
		This package includes the left lever for speed control, on the left hand console FOR USE WITH: LANE 3 ONLY		
P	453-9461	TRAVEL CONTROL, CUP HOLDER	4 4	\$59 \$59 NI
		This package includes a left side cup holder. FOR USE WITH: LANE 3 ONLY		

INSTRUCTIONS

NOTE: Operation and Maintenance Manual will be included in language
requested below.
Select only one.

P	0F-4542	INSTRUCTIONS, ENGLISH	0	NC
		FOR USE WITH: LANE 3 ONLY		
P	0F-4548	INSTRUCTIONS, FRENCH	0	NC
		FOR USE WITH: LANE 3 ONLY		

SERVICE INSTRUCTIONS**PICTOGRAPH FILMS**

P	364-2281	INSTRUCTIONS, NORTH AMERICAN	0	NC
		Includes picto decals with "WARNING" as required for ANSI. FOR USE WITH: LANE 3 ONLY FOR USE WITH: NORTH AMERICA ONLY (EXCEPT FOR QUEBEC, CANADA)		

PACKING**Export Packing**

	0G-3305	ROLL ON-ROLL OFF	0	NC
	0F-4120	PACKING, CONTAINER	0	\$432 NET
		CANNOT BE USED WITH: ROPS, FIXED		

USE	REF NO.	LANE 2 / 3 OPTIONAL	Ship Weight lbs	LIST PRICE AT PO ENTRY
ELECTRICAL				
P	364-2297	SWITCH, BATTERY DISCONNECT 2 FOR USE WITH: LANE 3 ONLY		\$109
OPERATOR ENVIRONMENT				
CANOPY SELECTION-LANE 3 ONLY				
P	364-2289	CANOPY, FIXED 71 0 REQUIRES: ROPS, FIXED FOR USE WITH: LANE 3 ONLY		\$1,105 \$1,105 NI
P	364-2288	CANOPY, FOLDABLE 82 0 REQUIRES: ROPS, FOLDABLE FOR USE WITH: LANE 3 ONLY		\$1,600 \$1,600 NI
TECHNOLOGY PRODUCTS				
PRODUCT LINK COMMUNICATIONS				
Product Link enables the remote transmission of information about the location, operation, and condition of your equipment. Efficiently and effectively monitor performance of your assets to help keep your jobs on schedule, maintain equipment condition, and reduce the costs of owning and operating your fleet. Availability varies by country. Please contact your marketing representative with questions.				
L	463-3786	PRODUCT LINK INSTALLATION 0 FOR USE WITH: PRODUCT LINK, SATELLITE PL631 and PRODUCT LINK, CELLULAR PL641 FOR USE WITH: LANE 3 ONLY		NC
L	454-5453	PRODUCT LINK, SATELLITE PL631 9 Product link pro series PL631 uses a satellite network to transmit location, utilization and condition information for viewing in Product Link's remote monitoring web interface. For use in areas with poor or no cellular coverage. FOR USE WITH: LANE 3 ONLY		\$1,040 NET
L	454-5454	PRODUCT LINK, CELLULAR PL641 9 Product Link Pro series PL641 uses GSM and CDMA 3G cellular networks to transmit location, utilization and condition information for viewing in Product Link's remote monitoring web interface. Cellular technology provides capabilities for frequent transmission and larger volumes of data. FOR USE WITH: LANE 3 ONLY		\$870 NET
OTHER ATTACHMENTS				
L	0G-6201	SPECIAL PAINT, SMALL UNITS 0 NOTE: One color only (in place of Caterpillar yellow). Please precise the color (RAL) in the notes. FOR USE WITH: LANE 3 ONLY		\$1,810
P	457-9153	MATS, COCOA 31 31 FOR USE WITH: LANE 3 ONLY		\$785 \$785 NI

USE	REF NO.	LANE 2 / 3 OPTIONAL	Ship Weight lbs	LIST PRICE AT PO ENTRY
-----	------------	---------------------	--------------------	---------------------------

DRUMS

P	361-5797	BALLAST-STEEL	888 0	\$2,220 \$2,220 NI
		Provides 400kg (881.8lb) additional drum weights to provide maximum machine operating weight. FOR USE WITH: LANE 3 ONLY		

FLUIDS

P	364-2408	SYSTEM, ANTIFREEZE PREPARATION	2	\$113
		Includes preparation for a reservoir containing antifreeze liquid to protect pumps, filters, and nozzles from freezing FOR USE WITH: LANE 3 ONLY		

FIELD INSTALLED ATTACHMENTS

The following field attachments can be
ordered through Machine Order as a
miscellaneous order.

P	444-5549	CONTROL, TRACTION KIT	0	\$1,680 NI
		Flow divider between front and rear drum for improved traction& minimized drum spinning. FOR USE WITH: LANE 3 ONLY		
P	364-2319	ROAD, ITALIAN HOMOLOGATION	0	\$575 NI
		Includes rear view mirror, license plate light, ECE headlights and rotating beacon. Required to be compliant with Italian Roding regulations. FOR USE WITH: LANE 3 ONLY		

INSTRUCTIONS

P	0F-4542	INSTRUCTIONS, ENGLISH	0	\$46 NI NET
		FOR USE WITH: LANE 3 ONLY		
P	0F-4548	INSTRUCTIONS, FRENCH	0	\$46 NI NET
		FOR USE WITH: LANE 3 ONLY		

PACKING*Preparation*

	0P-2046	PREPARATION FOR INSPECTION	0	\$392 NET
		FOR USE WITH: LANE 3 ONLY		
P	0F-4109	DECALS, UNITED NATIONS	0	\$66 NET
		FOR USE WITH: LANE 3 ONLY		

USE	REF NO.	LANE 2 / 3 OPTIONAL	Ship Weight lbs	LIST PRICE AT PO ENTRY
-----	------------	---------------------	--------------------	---------------------------

PACKING (CONT.)**MISC MATERIAL**

0G-4081	PACK, MISCELLANEOUS MATERIAL	0	NC
---------	------------------------------------	---	----



Cat[®] CB44B

TANDEM VIBRATORY ROLLER

Top Features

The Cat[®] CB44B is a 7.5 ton roller with 1500 mm (59") tandem vibratory drums. It is available in solid or split drum models and excels on a variety of asphalt mix designs as well as other granular materials.

- **Exceptional Visibility and Control** with handwheel steering technology, touch-pad machine functions, ECO-mode operation, and automatic speed control. This machine can be equipped with a Cab or ROPS/FOPS.
- **Smooth Operating Powertrain** with C3.4B engine that meets U.S. EPA Tier 4 Interim and E.U. Stage IIIB emissions standards. The split drum or solid drum designs provide the contractor with options to meet paving requirements. The split drum delivers superior mat quality and smooth performance when turning.
- **Versatile Vibratory Systems** include choice of dual amplitude/dual frequency or 5-amplitude systems. Versatile systems for both thick and thin lifts as well as varying paving speeds.

- **Cat[®] Compaction Control** keeps the operator informed for higher performance and efficiency. Infrared temperature sensors combined with mapping keep the operator informed of when optimal temperatures exist and where compaction has taken place. Temperature Mapping records data for analysis, while Pass-Count Mapping keeps the operator informed of where mat coverage has taken place and the number of passes made.
- **Industry-Leading Water Spray System** features a single fill point, dual water pumps, triple filtration, intermittent operation and high capacity for optimal performance. An optional freeze protection kit offers protection in cold temperatures.
- **Best Lifetime Value** with ECO-mode operation that conserves fuel, while oil-bath lubrication extends vibratory drum service intervals and minimizes life-time operating costs.

Specifications

Weights

Operating Weight – Split Drum w/ROPS/FOPS/CAB

Standard machine	9330 kg	20,569 lb
Maximum machine	10 470 kg	23,082 lb
Static linear load	31.1 kg/cm	174 lb/in

Operating Weight – Solid Drum w/ROPS/FOPS/CAB

Standard machine	8190 kg	18,056 lb
Maximum machine	8940 kg	19,709 lb
Static linear load	26.9 kg/cm	151 lb/in

Operating Weight – Split Drum w/ROPS/FOPS/CANOPY

Standard machine	9030 kg	19,908 lb
Maximum machine	10 250 kg	22,597 lb
Static linear load	29.8 kg/cm	167 lb/in

Operating Weight – Solid Drum w/ROPS/FOPS/CANOPY

Standard machine	7990 kg	17,615 lb
Maximum machine	8720 kg	19,224 lb
Static linear load	26.3 kg	147 lb/in

Service Refill Capacities

Fuel Tank	208 L	55 gal
Fuel Usage (50% duty)	12 hours	
Cooling System	18 L	4.7 gal
Engine Oil	9 L	2.4 gal
Hydraulic Tank	36 L	9.5 gal
Water Tank	742 L	196 gal

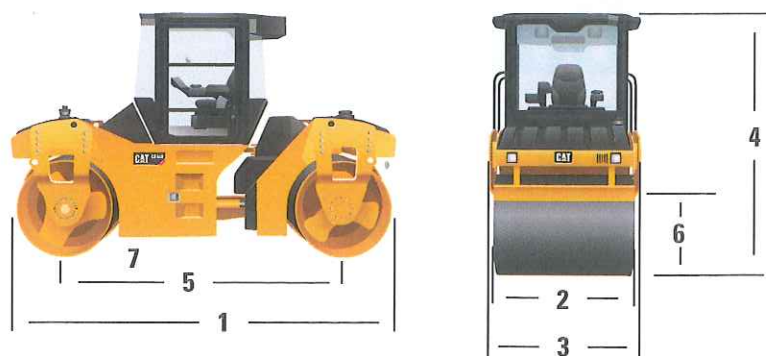
Engine – Powertrain

Engine Model	Cat [®] C3.4B	
Number of Cylinders	4	
Rated Speed	2200 rpm	
Bore	99 mm	3.89"
Stroke	110 mm	4.33"
Gross Power:		
Tier 4 Interim, Stage IIIB	75 kW	100 hp (l), 102 hp (m)
Speed Ranges:		
Low	0 - 7 km/hr	4.3 mph
High	0 - 12 km/hr	7.5 mph
Gradeability (no vibe):		
Solid drum	35°	
Split drum	38°	
Steering (Inside)	4.4 m	(14' 8")
Articulation Angle	35°	



CB44B Tandem Vibratory Roller

Dimensions



1 Overall Length	4565 mm	14' 5"
2 Drum Width	1500 mm	59"
Drum Offset	170 mm	6"
Drum Shell Thickness	16 mm	0.67"
Drum Diameter	1108 mm	44"
3 Overall width	1670 mm	5' 5"
4 Height at ROPS/FOPS	2980 mm	9' 9"
Height at Cab	2980 mm	9' 9"
5 Wheelbase	3300 mm	10' 10"
6 Curb Clearance	898 mm	35"
7 Ground Clearance	226 mm	9"

Vibratory Systems.

Dual Amplitude, Dual Frequency - Split Drum

Frequency – Hz (vpm)	42/53.3	(2520/3200)
Amplitude – mm (in)	0.62 - 0.31	(0.024 - 0.012)

Dual Amplitude, Dual Frequency - Solid Drum

Frequency – Hz (vpm)	53.3/63.3	(3200/3800)
Amplitude – mm (in)	0.65 - 0.31	(0.026 - 0.012)

Dual Amplitude, Dual Frequency - Solid Drum

Frequency – Hz (vpm)	45/53.3/57	(2700/3200/3420)
Amplitude – mm (in)	0.65 - 0.31	(0.026 - 0.012)

Five amplitude - Solid Drum

Frequency – Hz (vpm)	53.3	(3200)
Amplitude – mm (in)	high	0.64 (0.025)
	medium high	0.56 (0.022)
	medium	0.45 (0.018)
	medium low	0.35 (0.014)
	low	0.25 (0.010)

Standard and Optional Equipment

STANDARD EQUIPMENT:

- Front and Rear Solid Drums
- 5-Amplitude Vibratory System
- Sealed Pod Vibratory System
- ROPS/FOPS Platform
- Two-Speed Hydrostatic Transmission
- Locking Engine Compartment
- Triple Filtered Water Spray System
- 742 L Water Tank Capacity
- 12-Volt Electrical System
- 120 Amp Alternator
- Suspension Seat
- Working Lights

OPTIONAL EQUIPMENT:

- ROPS/FOPS Cab
- Roading Lights
- Air Conditioning
- Bio-Degradeable Oil
- Freeze Protection Kit
- Mirrors
- Warning Beacon
- Water Distribution Mats (cocoa)
- Water Distribution Mats (rubber)
- Product Link
- Recording Module (cab only)
- Edge Cutter
- Chip Spreader Ready (split drum)
- Air Suspension Seat w/Heat
- High Ambient Cooling System
- Temperature Gauge
- Cat Compaction Control (Temperature and Pass-Count Mapping)
- Halogen Lights w/Drum Edge Lights
- High Intensity Discharge (HID) w/ Drum Edge Lighting
- Temperature Gauge (single sensor)
- Front and Rear Split Drum

For more complete information on Cat products, dealer services, and industry solutions, visit us on the web at www.cat.com

QEHQ1584-01 (09-12)

© 2012 Caterpillar
All Rights Reserved

Materials and specifications are subject to change without notice. Featured machines in photos may include additional equipment. See your Cat dealer for available options.

CAT, CATERPILLAR, SAFETY.CAT.COM, their respective logos, "Caterpillar Yellow" and the "Power Edge" trade dress, as well as corporate and product identity used herein, are trademarks of Caterpillar and may not be used without permission.



**CB44B VIBRATORY ASPHALT COMPACTOR
RANTIGNY, FRANCE**Ship Weight
lbsLIST PRICE
AT PO ENTRY

Standard Equipment:

POWERTRAIN

Cat C3.4 ACERT Engine
(101 HP / 75 kW, four-cylinder turbo-
charged)
Cyclonic Air cleaner
Water separator
Ultra clean fuel filter with integrated
electric prime pump
ECO mode throttle system
Dual braking systems (service & parking)
Two-speed hydrostatic transmission

ELECTRICAL

12-volt electric starting
120 ampere alternator
Maintenance free battery - 1000 CCA
Halogen working lights - bumper mounted
(2 front-facing and 2 rear-facing)
Backup alarm and forward warning horn
Cat Engine and Vehicle ECM's - ET
compatible
Product Link ready

OPERATOR ENVIRONMENT

Isolated ROPS/FOPS structure
Platform handrails / guardrails
Four heavy-duty isolation mounts
Power steering
Adjustable, suspension, vinyl seat
76 mm (3") wide retractable seat belt
Adjustable, tilt-steering column/
instrument panel
Indicator light package with audible
warning alarm for:
-hydraulic oil pressure
-hydraulic oil temperature
-engine oil pressure
-engine coolant temperature
-glow plugs
-service fault indicator
Fuel level gauge
Water level gauge
Service hour meter
Lockable, vandalism guard for instrument
panel
Sliding, rotating seat
Automatic speed control
Auto-vibe with adjustable on/off control
Vibe tachometer
Speedometer

DRUMS

Smooth Solid drum
1500 mm (59") wide x 1100 mm (43")
diameter

Two amplitudes with two vibe frequencies
Front and Rear self adjusting scraper
blades
Pod-style eccentric weight housing

FLUIDS

Premixed 50% concentration of Extended
Life Coolant with freeze protection
to -37C (-35F)

OTHER STANDARD EQUIPMENT

Locking engine enclosure
Sealed for life hitch bearings
Sight gauges:
-hydraulic tank level
-air restriction indicator
Cap lock for hydraulic tank
Articulated frame with safety lock
Transport tie-down and lift points
55 gal (208 L) fuel tank capacity
197 gal (745 L) water tank capacity
Quick connect hydraulic pressure test
ports

Supersedes
US-A D Caterpillar: Confidential Green

Subject to change without notice
Printed in USA
U. S. DOLLAR CURRENCY

Effective 02JAN2015
CB44B-001

CB44B VIBRATORY ASPHALT COMPACTOR
RANTIGNY, FRANCE

Ship Weight
lbs

LIST PRICE
AT PO ENTRY

ORDERING INSTRUCTIONS

For an explanation of Lane Strategy and ordering instructions please refer to the sales model "GENERAL" posted in the web price list.

You must order your machine from Lane 1, Lane 2, or Lane 3. The lane you order from will determine capability to order additional attachments and service level you will receive.

LANE 1 DISTRIBUTION CENTER ARRANGEMENTS

If no reference number is listed, a Lane 1 configuration is not available.

Distribution Center Arrangement (DCA) reference numbers for this model may not be used to order machine from the factory, they are only valid to order machines from a Product Distribution Center (PDC).

389-0653	CB44B VIB COMPACTOR DCA-2 17,196 Available to ADSD-N from the Baltimore PDC INCLUDES: 341-8673 CB44B VIBRATORY COMPACTOR 360-5692 ENGINE, TIER 4I, STAGE 3B 341-8790 DRUM, SOLID 341-8800 HITCH, STANDARD 341-8765 SYSTEM, 2 AMP, 2 FREQ 351-3398 STD MACHINE 343-6157 OIL, HDR, FACTORY FILLED 341-8745 PLATFORM, ROPS/FOPS 356-0924 ROTATION, FULL 343-6129 SEAT, STD VINYL 356-0878 ELECTRICAL, PREMIER 379-9456 LIGHTS, WORKING 319-4492 NO PRODUCT LINK 343-6164 INSTRUCTIONS, NORTH AMERICAN 351-3443 LIGHT, ROTATING BEACON 375-0356 MATS, COCOA 351-3429 FREEZE PROTECTION, ROPS/FOPS	\$139,550
----------	---	-----------

LANE 2/3 FACTORY ARRANGEMENTS

If no reference number is listed, Lane 2 / Lane 3 configuration is not available.

341-8673	CB44B VIBRATORY COMPACTOR 5,558	\$130,820
----------	--	-----------

Supersedes
US-A D Caterpillar: Confidential Green

Subject to change without notice
Printed in USA
U. S. DOLLAR CURRENCY

Effective 02JAN2015
CB44B-002

CB44B VIBRATORY ASPHALT COMPACTOR
RANTIGNY, FRANCE**Ship Weight**
lbs**LIST PRICE**
AT PO ENTRY

0G-0286**CB44B MISC MATERIAL** 0**NC**Use this as the top level reference number when ordering
miscellaneous material without ordering a machine.

Supersedes**US-A D****Caterpillar: Confidential Green****Subject to change without notice****Printed in USA**
U. S. DOLLAR CURRENCY**Effective 02JAN2015****CB44B-003**

USE	REF NO.	LANE 1	Ship Weight lbs	LIST PRICE AT PO ENTRY
-----	------------	--------	--------------------	---------------------------

LANE 1 NACD MANDATORY ATTACHMENTS

(MUST CHOOSE ONE FROM EACH CATEGORY)

LANE SELECTION

YOU MUST SELECT THIS REFERENCE WHEN ORDERING FROM THE PDC

0P-9001	LANE 1 ORDER.	0	NC
---------	--------------------	---	----

OPERATION AND MAINTENANCE MANUEL**NOTE: Operation and Maintenance Manual will be included in language requested below.**

P	0F-4571	INSTRUCTIONS, ENGLISH	0	NC
---	---------	-----------------------------	---	----

P	0F-4570	INSTRUCTIONS, FRENCH	0	NC
---	---------	----------------------------	---	----

PACKING

0G-3305	ROLL ON-ROLL OFF	0	NC
---------	------------------------	---	----

Available for ADSD-N machine shipment from Rantigny (R9) source.

DOMESTIC PACKING**Available for Lane 1 machine shipment from Mpls PDC only.**

0P-0210	PACK, DOMESTIC TRUCK	0	NC
---------	----------------------------	---	----

USE	REF NO.	Ship Weight lbs	LIST PRICE AT PO ENTRY
-----	------------	--------------------	---------------------------

LANE 1 NACD FINISH TO ORDER

May select additional options (not required).

INSTRUCTIONS - PICTOGRAPH FILM

P	343-6165	INSTRUCTIONS, INTERNATIONAL 2	NC
		ISO picto warning decals using symbols only as required for all non-North American countries and Quebec, Canada	

CERTIFICATES

0G-6021	CERTIFICATE OF ORIGIN 0	\$34 NET
---------	-----------------------------------	----------

Supersedes

US-A D

Caterpillar: Confidential Green

Subject to change without notice

Printed in USA
U. S. DOLLAR CURRENCY

Effective 02JAN2015

CB44B-005

USE	REF NO.	LANE 2 / 3 MANDATORY	Ship Weight lbs	LIST PRICE AT PO ENTRY
-----	------------	----------------------	--------------------	---------------------------

LANE SELECTION**(MUST SELECT ONE)**

YOUR ORDER WILL BE LANE 2 UNLESS YOU SELECT A PACKAGE OR ATTACHMENT LISTED AS LANE 3 ONLY.

0P-9002	LANE 2 ORDER	0	NC
0P-9003	LANE 3 ORDER	0	NC

MUST SELECT ONE ITEM FROM EACH CATEGORY FOUND IN THE MANDATORY ATTACHMENT SECTION

POWERTRAIN**ENGINE**

L	360-5692	ENGINE, TIER 4I, STAGE 3B	1,157	NC
		FOR USE WITH LANE 3 ONLY		

DRUM TYPE

L	341-8790	DRUM, SOLID	6,263	NC
		FOR USE WITH LANE 3 ONLY		
		1500 mm (59") solid drums.		
L	341-8795	DRUM, SPLIT	7,873	\$28,640
		FOR USE WITH LANE 3 ONLY		
		1500 mm (59") split drums to minimize mat tearing while operating at maximum turning.		
		REQUIRES: ELECTRICAL, PREMIER		

HITCH

L	341-8800	HITCH, STANDARD	712	NC
		FOR USE WITH LANE 3 ONLY		
		Standard hitch without offset.		
L	341-8801	HITCH, OFFSET	831	\$3,335
		FOR USE WITH LANE 3 ONLY		
		Switch control on propel gives + / - 152 mm (6") of drum offset.		
		REQUIRES: ELECTRICAL, PREMIER		

HYDRAULICS**VIBRATORY HYDRAULICS**

L	341-8752	SYSTEM, 5 AMPLITUDE	1,578	\$860
		FOR USE WITH LANE 3 ONLY		
		Hand wheel control for vibratory amplitude.		
		Includes auto reversing weights.		
		Frequency of 53.3 Hz (3200 vpm).		
		REQUIRES: DRUM, SOLID		
L	341-8765	SYSTEM, 2 AMP, 2 FREQ	1,484	NC
		FOR USE WITH LANE 3 ONLY		
		Frequency of 53.3 Hz (3200 vpm) and 63.3 Hz (3800 vpm).		
		Console switch control for amplitude / frequency setting.		
		REQUIRES: DRUM, SOLID		

USE	REF NO.	LANE 2 / 3 MANDATORY	Ship Weight lbs	LIST PRICE AT PO ENTRY
-----	------------	----------------------	--------------------	---------------------------

HYDRAULICS (CONT.)***VIBRATORY HYDRAULICS (Cont.)***

L	341-8773	SYSTEM, 2 AMP, 2 FREQ 1,852 FOR USE WITH LANE 3 ONLY Frequency of 43 Hz (2520 vpm) and 53.3 Hz (3200 vpm). Console switch control for amplitude / frequency setting. REQUIRES: DRUM, SPLIT		\$11,020
---	----------	--	--	----------

AUXILIARY HYDRAULICS

L	351-3398	STD MACHINE 55 FOR USE WITH LANE 3 ONLY No chipsreader controls.		\$2,575
---	----------	--	--	---------

OILS

L	343-6157	OIL, HDR, FACTORY FILLED 311 FOR USE WITH LANE 3 ONLY		NC
L	343-6158	OIL, HDR, BIO, FACTORY FILLED 324 FOR USE WITH LANE 3 ONLY Bio degradable oil recommended for hydraulic system when environmental compliance is required or desired. Factory filled.		\$615
L	355-3086	OIL, HDR, HIGH AMBIENT 324 FOR USE WITH LANE 3 ONLY Hydraulic Oil recommended for machines operating in high temperature regions.		\$361

ELECTRICAL***CONTROLS***

L	356-0877	ELECTRICAL, BASIC 62 FOR USE WITH LANE 3 ONLY Includes vehicle wiring and basic 2 button propel lever for basic machine vibe and water functions.		NC
L	356-0878	ELECTRICAL, PREMIER 110 FOR USE WITH LANE 3 ONLY Includes premier wiring and premier 6 button propel lever needed for most options. The additional 4 buttons will control the offset hitch and edge cutter, if the machine is equipped with these options.		\$1,665

LIGHTING

L	379-9456	LIGHTS, WORKING 11 FOR USE WITH LANE 3 ONLY Includes 2 front and 2 rear facing clear lights located in the bumpers.		NC
L	341-8828	LIGHTS, ROADING AND WORKING 11 FOR USE WITH LANE 3 ONLY Includes 2 front high beam headlights, 2 rear facing flood lights, front and rear turn signals, and front and rear indicator/parking lights. All lights are attached to the bumpers. REQUIRES LIGHTING PREP		\$825

Supersedes
US-A D Caterpillar: Confidential Green

Subject to change without notice
Printed in USA
U. S. DOLLAR CURRENCY

Effective 02JAN2015
CB44B-007

USE	REF NO.	LANE 2 / 3 MANDATORY	Ship Weight lbs	LIST PRICE AT PO ENTRY
-----	------------	----------------------	--------------------	---------------------------

OPERATOR ENVIRONMENT

L	341-8745	PLATFORM, ROPS/FOPS 1,208 FOR USE WITH LANE 3 ONLY Includes grab handrails and foundation for the sliding and rotating operator station.		NC
L	344-0133	CAB, ROPS/FOPS 1,636 FOR USE WITH LANE 3 ONLY Includes grab handrails and foundation for the sliding and rotating operator station. REQUIRES: ELECTIRCAL, PREMIER		\$10,810

OPERATOR STATION

L	343-6115	ROTATION, HALF 40 FOR USE WITH LANE 3 ONLY Includes operator station controls, LCD display and station slide and 180 deg rotate levers.		NC
L	356-0924	ROTATION, FULL 75 FOR USE WITH LANE 3 ONLY Includes opearator station controls, LCD display and station slide and 359 deg rotate levers. REQUIRES: ELECTRICAL, PREMIER		\$2,010

SEAT SELECTION

L	343-6129	SEAT SUSPENSION (B) STD ROPS 157 FOR USE WITH LANE 3 ONLY Vinyl suspension seat with fold-up arm rests, retractable seat belt, weight adj., and tilt back.		NC
L	355-3084	SEAT, HEATED VINYL 163 FOR USE WITH LANE 3 ONLY Heated vinyl suspension seat with fold-up arms rests, retractable seat belt, weight adj., and tilt back.		\$309
L	344-0124	SEAT, STD CLOTH 157 FOR USE WITH LANE 3 ONLY Cloth suspension seat with fold-up arm rests, retractable seat belt, weight adj., and tilt back. REQUIRES: CAB, ROPS/FOPS		\$206
L	355-3085	SEAT, HEATED CLOTH 163 FOR USE WITH LANE 3 ONLY Heated cloth suspension seat with fold-up arm rests, retractable seat belt, weight adj., and tilt back. REQUIRES: CAB, ROPS/FOPS		\$361

TECHNOLOGY PRODUCTS**PRODUCT LINK (Must Select One)**

Product Link enables the remote transmission of information about the location, operation, and condition of your equipment. Efficiently and effectively monitor performance of your assets to help keep your jobs on schedule, maintain equipment condition, and reduce the cost of owning and operating your fleet. Availability varies by country. Please contact your Cat marketing representative with questions.

L	319-4492	NO PRODUCT LINK 0 FOR USE WITH LANE 3 ONLY		NC
---	----------	---	--	----

Supersedes
US-A D Caterpillar: Confidential Green

Subject to change without notice
Printed in USA
U. S. DOLLAR CURRENCY

Effective 02JAN2015
CB44B-008

USE	REF NO.	LANE 2 / 3 MANDATORY	Ship Weight lbs	LIST PRICE AT PO ENTRY
-----	------------	----------------------	--------------------	---------------------------

TECHNOLOGY PRODUCTS (CONT.)***PRODUCT LINK (Must Select One) (Cont.)***

L	424-0883	PRODUCT LINK, CELLULAR PL421 9		\$470 NET
		FOR USE WITH LANE 3 ONLY		
		Cellular Product Link uses GSM cellular networks to transmit information about the hours and location of your equipment. This Product Link offering may provide asset health and/or utilization information depending on machine capability. Cellular technology provides capabilities for frequent data transmission.		

INSTRUCTIONS***DECAL PACKAGES***

L	343-6164	INSTRUCTIONS, NORTH AMERICAN 2		NC
		FOR USE WITH LANE 3 ONLY		
		ANSI picto warning decals using symbols plus the word "WARNING" as required for North America (except Quebec, Canada).		

OPERATION AND MAINTENANCE MANUAL

NOTE: Operation and Maintenance Manual will be included in language requested below.
Select only one.

P	0F-4570	INSTRUCTIONS, FRENCH 0		NC
P	0F-4571	INSTRUCTIONS, ENGLISH 0		NC

USE	REF NO.	LANE 2 / 3 OPTIONAL	Ship Weight lbs	LIST PRICE AT PO ENTRY
ELECTRICAL				
L	356-0875	LIGHTING, PREP 13 FOR USE WITH LANE 3 ONLY Includes harnesses required for lighting options.		\$1,010
P	351-3443	LIGHT, ROTATING BEACON 4 FOR USE WITH LANE 3 ONLY Includes 1 rotating amber beacon light mounted on top of the machine. CANNOT BE USED WITH: ROAD HOMOLOGATION, ITALY INCLUDED IN: Road Homologation, Italy		\$620
P	356-1198	LIGHTS, HALOGEN, ROPS 35 0 FOR USE WITH LANE 3 ONLY Includes 2 front and 2 rear facing Halogen flood lamps mounted to the ROPS canopy and 4 drum edge lights. REQUIRES: PLATFORM, ROPS/FOPS; LIGHTING PREP CANNOT BE USED WITH: LIGHTS, HIGH INTENSITY, ROPS		\$1,140 \$1,140 NI
P	351-3439	LIGHTS, HALOGEN, CAB 31 0 FOR USE WITH LANE 3 ONLY Includes 2 front and 2 rear facing Halogen flood lamps mounted to the CAB and 4 drum edge lights. REQUIRES: CAB, ROPS/FOPS; LIGHTING PREP CANNOT BE USED WITH: LIGHTS, HIGH INTENSITY, CABS		\$1,140 \$1,140 NI
P	351-3440	LIGHTS, HIGH INTENSITY, ROPS 44 0 FOR USE WITH LANE 3 ONLY Includes 2 front and 2 rear facing High Intensity flood lamps mounted to the ROPS canopy and 4 drum edge lights. REQUIRES: PLATFORM, ROPS/FOPS; LIGHTING PREP CANNOT BE USED WITH: LIGHTS, HALOGEN, ROPS		\$3,600 \$3,600 NI
P	351-3441	LIGHTS, HIGH INTENSITY, CAB 35 0 FOR USE WITH LANE 3 ONLY Includes 2 front and 2 rear facing High Intensity flood lamps mounted to the CAB and 4 drum edge lights. REQUIRES: CAB, ROPS/FOPS; LIGHTING PREP CANNOT BE USED WITH: LIGHTS, HALOGEN, CAB		\$3,600 \$3,600 NI

USE	REF NO.	LANE 2 / 3 OPTIONAL	Ship Weight lbs	LIST PRICE AT PO ENTRY
-----	------------	---------------------	--------------------	---------------------------

TECHNOLOGY PRODUCTS**CAT COMPACTION CONTROL**

This is a factory designed and integrated SBAS accuracy level pass count and temperature mapping system which requires no off-board infrastructure.

For higher level accuracy consult your Dealer Technology Representative to order the necessary base station, data radio and option keys for RTK signal.

Antenna upgrade from L1 to Rugged Zephyr is required for RTK correction.

L	422-6860	SENSORS, MAT TEMPERATURE	0	\$3,410
		Includes front and rear bumper mounted infrared air purged temperature sensors.	0	\$3,410 NI
		REQUIRES: ELECTRICAL PREMIER		
		FOR USE WITH: LANE 3 ONLY		
L	351-3412	MAPPING, GNSS	26	\$14,840
		Factory install of all components needed for mapping of temperature and machine pass count. Includes front and rear bumper mounted infrared, air purged temperature sensors, harnesses, system electronic controls including CB450 (4.3IN/10.9CM) display and MS952 GPS receiver		
		REQUIRES: PLATFORM, ROPS/FOPS; ELECTRICAL, PREMIER		
		INCLUDES: SENSORS, MAT TEMPERATURE		
		FOR USE WITH: LANE 3 ONLY		
L	355-3141	MAPPING, GNSS, CAB	26	\$14,840
		Factory install of all components needed for mapping of temperature and machine pass count. Includes front and rear bumper mounted infrared, air purged temperature sensors, harnesses, system electronic controls including CB450 (4.3IN/10.9CM) display and MS952 GPS receiver		
		REQUIRES: CAB, ROPS/FOPS; ELECTRICAL, PREMIER		
		INCLUDES: SENSORS, MAT TEMPERATURE		
		FOR USE WITH: LANE 3 ONLY		

OTHER ATTACHMENTS

L	360-6861	AIR CONDITIONER	64	\$5,660
		FOR USE WITH LANE 3 ONLY		
		REQUIRES: CAB, ROPS/FOPS		
P	351-3438	SUN SCREEN	4	\$402
		FOR USE WITH LANE 3 ONLY		
		Sun screen/visor inside cab.		
		REQUIRES: CAB, ROPS/FOPS		
L	351-3422	EDGE CUTTER/COMPACTOR	256	\$10,810
		FOR USE WITH LANE 3 ONLY		
		Includes both cutting and compacting wheel attachments.		
		REQUIRES: DRUM, SOLID; ELECTRICAL, PREMIER		
L	363-8263	EDGE CUTTER/COMPACTOR	0	\$10,810
		FOR USE WITH LANE 3 ONLY		
		Includes both cutting and compacting wheel attachments.		
		REQUIRES: DRUM, SPLIT; ELECTRICAL, PREMIER		
P	375-0356	MATS, COCOA	26	\$1,275
		FOR USE WITH LANE 3 ONLY		
		CANNOT BE USED WITH: MATS, WATER DISTRIBUTION		

USE	REF NO.	LANE 2 / 3 OPTIONAL	Ship Weight lbs	LIST PRICE AT PO ENTRY
-----	------------	---------------------	--------------------	---------------------------

OTHER ATTACHMENTS (CONT.)

P	375-0357	MATS, WATER DISTRIBUTION 33 FOR USE WITH LANE 3 ONLY CANNOT BE USED WITH: MATS, COCOA		\$1,625
P	351-3429	FREEZE PROTECTION, ROPS/FOPS 1,279 FOR USE WITH LANE 3 ONLY Includes a reservoir that holds windshield washer or RV antifreeze that protects lines, pumps, filters, and nozzles from freezing. REQUIRES: PLATFORM, ROPS/FOPS		\$585
P	351-3427	FREEZE PROTECTION, CAB 4 FOR USE WITH LANE 3 ONLY Includes a reservoir that holds windshield washer or RV antifreeze that protects lines, pumps, filters, and nozzles from freezing. REQUIRES: CAB, ROPS/FOPS		\$585
P	462-0499	MIRRORS, EXTERNAL, FRONT 8,113 8,113 FOR USE WITH LANE 3 ONLY Includes 2 external, adjustable mirrors on the front of the cab. REQUIRES: CAB, ROPS/FOPS		\$225 \$225 NI
P	462-0500	MIRRORS, EXTERNAL, REAR 5,512 5,512 FOR USE WITH LANE 3 ONLY Includes 2 external, adjustable mirrors on the rear of the cab. FOR USE WITH: ROTATION, FULL REQUIRES: CAB, ROPS/FOPS		\$199 \$199 NI
P	351-3424	COVERS, DRUM 45 FOR USE WITH LANE 3 ONLY Helps keep debris out of drums.		\$870

FIELD INSTALLED ATTACHMENTS

P	351-3422	EDGE CUTTER/COMPACTOR 0 FOR USE WITH LANE 3 ONLY Includes both cutting and compacting wheel attachments. REQUIRES: Machine equipped with drum, solid; electrical, premier REQUIRES: Special tooling		\$10,810 NI
P	363-8263	EDGE CUTTER/COMPACTOR 0 FOR USE WITH LANE 3 ONLY Includes both cutting and compacting wheel attachments. REQUIRES: Machine equipped with drum, split; electrical, premier REQUIRES: Special tooling		\$10,810 NI

PACKING**PACKING**

0G-3305	ROLL ON-ROLL OFF 0	NC
---------	---------------------------------	----

MISC MATERIAL

0G-4081	PACK, MISCELLANEOUS MATERIAL 0	NC
---------	---	----



Cat® CW34

PNEUMATIC TIRE ROLLER

Top Features

The Cat® CW34 is an eight wheel pneumatic roller that features a modular ballast system and flexible operating weight of 10 000 kg to 27 000 kg (22,050 lb - 59,525 lb). This machine offers excellent visibility, ECO-mode operation, even compaction, and excels on a variety of materials due to its flexible air-on-the-run capability.

- **Exceptional Visibility and Control** with sliding and rotating operator's station, LCD display, touch-pad machine functions, and optional Compaction Control. This machine can be equipped with a Cab or ROPS.
- **Smooth Operating Powertrain** with electronic propel control and smooth braking system. The three speed hydrostatic propel system delivers excellent gradeability with speeds up to 19 km/hr (11.8 mph).

- **Versatile Compaction Performance** due to the flexible ballast system, oscillating front wheels, and optional air-on-the-run. Flexible ballast options include modular and non-modular steel, sand, and water. The modular steel ballast system can be easily added or removed, making it easy to adjust operating weights and match job site requirements.
- **Cat® Compaction Control** keeps the operator informed for higher performance and efficiency. Infrared temperature sensors combined with mapping keep the operator informed of when optimal conditions exist and where compaction has taken place. Temperature Mapping records data for future analysis, while Pass-Count Mapping keeps the operator informed of the number of passes made.
- **Best Lifetime Value** with ECO-mode operation, efficient engine, and durable rubber tires minimize life-time operating costs and maximize profit.

Specifications

Weights

Operating Weights*

			Load per Wheel
Base machine	10 000 kg	22,050 lb	1.25 mt
w/Water	13 000 kg	28,660 lb	1.62 mt
w/Wet sand	16 000 kg	35,275 lb	2.00 mt
w/Modular steel	16 450 kg	36,265 lb	2.05 mt
w/Modular steel w/water	19 450 kg	42,880 lb	2.43 mt
w/Modular steel w/wet sand	22 450 kg	49,495 lb	2.80 mt
w/Modular and non-modular steel	22 550 kg	49,715 lb	2.82 mt
w/Modular and non-modular steel w/water	24 700 kg	54,450 lb	3.08 mt
w/Modular and non-modular steel w/wet sand	27 000 kg	59,525 lb	3.38 mt

* Weights shown include 80 kg (176 lb) operator, full capacity fuel tank, full capacity water tank, Cab and all machine options. Weights are approximate and may vary by market due to standard and optional equipment requirements. Water and sand ballast are not supplied by the manufacturer.

Engine – Powertrain

Engine Model	Cat® C4.4 w/ACERT™ Technology	
Number of Cylinders	4	
Rated Speed	2200 rpm	
Bore	105 mm	4.13"
Stroke	127 mm	5"
Gross Power:		
Tier 4 Interim, Stage IIIB	98 kW	131 hp (I), 133.2 hp (m)
Tier 3, Stage IIIA Equivalent	96.5 kW	129 hp (I), 131.2 hp (m)

* Engine configuration varies by regional emission requirements.

Speed Ranges:

Low	0 - 6 km/hr	4 mph
Medium	0 - 12 km/hr	7 mph
High	0 - 19 km/hr	12 mph

Service Refill Capacities

Fuel Tank	270 L	71 gal
Cooling System	27 L	7 gal
Engine Oil	9 L	2.4 gal
Hydraulic Tank	32 L	8.5 gal
Water Tank	380 L	100 gal
Emulsion Tank	40 L	10.5 gal

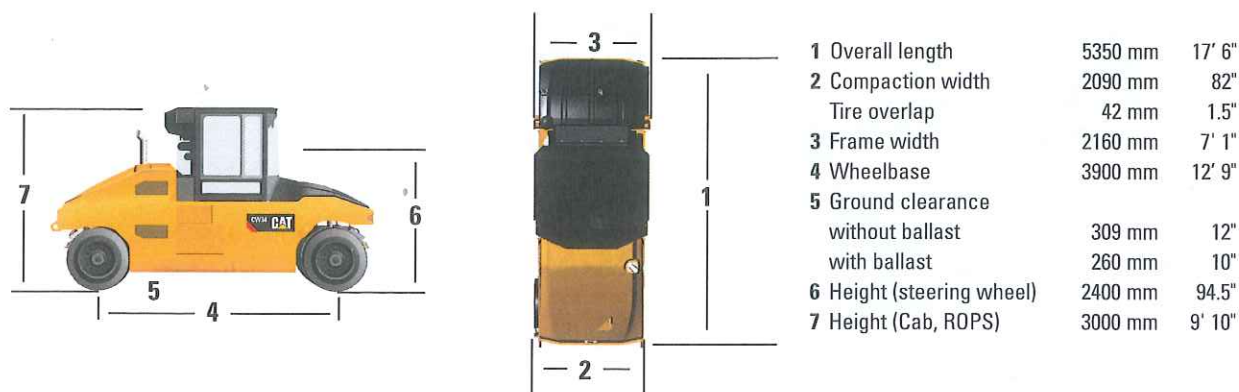
Standard Equipment

- 24-Volt Electrical System
- 3 m³ Water Tight Ballast Chamber
- 13/80-R20 Tires
- 100 Amp Alternator
- Eco-mode
- Front Wheel Suspension
- Halogen Working Lights
- LCD Operating Display
- Product Link Ready
- Pressurized Water Spray w/Triple Filtration
- Rooding Lights
- Sliding Station w/180° Rotation
- Three-Speed Propel System
- Vinyl Seat with 76 mm (3") Wide Belt
- Wheel Oscillation, (front and rear)



CW34 Pneumatic Tire Roller

Dimensions



Ground Contact Pressures

		Weight per Wheel							
Average Wheel Load	Tire Pressure	300 kpa 44 psi	400 kpa 58 psi	500 kpa 73 psi	600 kpa 87 psi	700 kpa 102 psi	800 kpa 116 psi	850 kpa 123 psi	900 kpa 131 psi
	1500 kg 3,307 lb	242 kPa 35 psi	309 kPa 45 psi	406 kPa 59 psi	612 kPa 89 psi	680 kPa 99 psi	1038 kPa 151 psi	1265 kPa 184 psi	1587 kPa 230 psi
	2000 kg 4,410 lb	260 kPa 38 psi	299 kPa 43 psi	357 kPa 52 psi	462 kPa 67 psi	498 kPa 72 psi	628 kPa 91 psi	691 kPa 100 psi	764 kPa 111 psi
	2500 kg 5,512 lb	308 kPa 45 psi	322 kPa 47 psi	360 kPa 52 psi	429 kPa 62 psi	458 kPa 66 psi	539 kPa 78 psi	577 kPa 84 psi	618 kPa 90 psi
	3000 kg 6,614 lb	397 kPa 58 psi	369 kPa 54 psi	386 kPa 56 psi	433 kPa 63 psi	457 kPa 66 psi	516 kPa 75 psi	543 kPa 79 psi	573 kPa 83 psi
	3375 kg 7,441 lb	518 kPa 75 psi	423 kPa 61 psi	418 kPa 61 psi	448 kPa 65 psi	469 kPa 68 psi	517 kPa 75 psi	539 kPa 78 psi	564 kPa 82 psi

For more complete information on Cat products, dealer services, and industry solutions, visit us on the web at www.cat.com

QEHO1595-03 (4-14)

© 2014 Caterpillar
All Rights Reserved

Materials and specifications are subject to change without notice. Featured machines in photos may include additional equipment. See your Cat dealer for available options.

CAT, CATERPILLAR, SAFETY.CAT.COM, their respective logos, "Caterpillar Yellow" and the "Power Edge" trade dress, as well as corporate and product identity used herein, are trademarks of Caterpillar and may not be used without permission.



CW34 PNEUMATIC TIRE COMPACTOR (XUZHOU)
XUZHOU, CHINA

Ship Weight
lbs

LIST PRICE
AT PO ENTRY

Standard Equipment:

POWERTRAIN

Cat C4.4 ACERT Engine
(T4i/Stage 3B 131 HP / 98 kW, four-
cylinder turbo-charged)
(T3/Stage 3A 130 HP / 96.5 kW, four-
cylinder turbo-charged)
Dual element cyclonic air cleaner
Fuel filter / water separator
Ultra clean fuel filter with integrated
prime pump
Fuel reducing, automotive style,
variable speed engine control
Automatic idle shutdown
Dual braking system (service & parking)
Continuously variable hydrostatic
transmission with seamless shifting
3 Speed ranges
Auto speed control (ASC) for lower noise
and fuel consumption

suspension
Single pump, triple filtration
pressurized water system
Dedicated system for each tire
Intermittent adjustable spray on/off
time
Water Capacity
Self adjusting, retractable, nylon tire
scrapering system
Manual brake release
Lockable fuel fill
Transport tie-down and lift points
High ambient capable (49 deg C)

ELECTRICAL

24-volt electric starting
100 - amp alternator
Two CAT Maintenance Free Batteries
Roading lights - turn signals and low
beam forward facing lights
Rear backup light and stop indication
lamps
Halogen working lights - bumper mounted
(2 front-facing and 2 rear-facing)
Backup alarm and forward warning horn
Product Link Ready

OPERATOR ENVIRONMENT

Side to side sliding and plus/minus 90
degree rotating operator station
Machine and operating functions are
integrated into 4" LCD display
Fore/Aft adjustable suspension seat
Oversized RH arm rest
3" wide belt
Vandalism protection
Power assisted steering
Tilt able steering column
Rubber floor mat

FLUIDS

Premixed 50% concentration of Extended
Life Coolant with freeze protection
to -37C (-35F)

OTHER STANDARD EQUIPMENT

Locking fiberglass engine enclosure
All wheel oscillation - front and rear
Front wheel vertical equalizing

Supersedes
US-A D Caterpillar: Confidential Green

Subject to change without notice
Printed in USA
U. S. DOLLAR CURRENCY

Effective 02JAN2015
CW34NN-001

CW34 PNEUMATIC TIRE COMPACTOR (XUZHOU)
XUZHOU, CHINA

Ship Weight
lbs

LIST PRICE
AT PO ENTRY

ORDERING INSTRUCTIONS

For an explanation of Lane Strategy and ordering instructions please refer to the sales model "GENERAL" posted in the price list.

You must order your machine Lane 1, Lane 2, or Lane 3.
The lane you order from will determine capability to order additional attachments and service level you will receive.

LANE 1 DISTRIBUTION CENTER ARRANGEMENTS

If no reference number is listed, a Lane 1 configuration is not available.

Distribution Center Arrangement (DCA) reference numbers for this model may not be used to order a machine from the factory, they are only valid to order machines from a Product Distribution Center (PDC)

LANE 2/ LANE 3 FACTORY ARRANGEMENTS

If no reference number is listed, a Lane 2/ Lane 3 configuration is not available.

441-7585	CW34 EASY ORDER CONFIG-1 74,679 INCLUDES: 392-7190 CW34 PNEUMATIC COMPACTOR 351-8385 ENGINE, TIER 4I, STAGE 3B 355-1670 BELT, ENG, NO AC 368-9296 BASE, OPERATOR STATION 364-6748 SEAT, STD VINYL, BSC 367-3672 CONTROL, PREMIUM 359-7788 TIRES, MICHELIN 364-8437 OIL, HDR, FACTORY FILLED 319-4492 NO PRODUCT LINK 364-6752 INSTRUCTIONS, NORTH AMERICAN 364-6757 LIGHTS, HALOGEN 359-7792 ROPS 364-6759 CANOPY, SUN, ROPS 359-7796 INFLATION GROUP 359-7794 SKIRT, TIRE 359-7795 BALLAST, MODULAR 388-7112 COCOA MAT SCRAPER, TIRE, SECONDARY	\$230,760
----------	---	-----------

**CW34 PNEUMATIC TIRE COMPACTOR (XUZHOU)
XUZHOU, CHINA**Ship Weight
lbsLIST PRICE
AT PO ENTRY

441-7587	CW34 EASY ORDER CONFIG-7 43,766	\$182,340
	INCLUDES:	
	392-7190 CW34 PNEUMATIC COMPACTOR	
	351-8385 ENGINE, TIER 4I, STAGE 3B	
	355-1670 BELT, ENGINE, NO AC	
	368-9296 BASE, OPERATOR STATION	
	364-6748 SEAT, STD VINYL, BSC	
	367-3671 CONTROL, STD	
	359-7789 TIRES, STD	
	364-8437 OIL, HDR, FACTORY FILLED	
	319-4492 NO PRODUCT LINK	
	364-6752 INSTRUCTION,NORTH AMERICAN	
	359-7792 ROPS	
	364-6759 CANOPY, SUN, ROPS	
392-7190	CW34 PNEUMATIC COMPACTOR 18,739	\$177,490
0P-2788	CW34 MISC MATERIAL 0	NC
	Use this as the top level reference number when ordering miscellaneous material without ordering a machine.	

Supersedes

US-A D

Caterpillar: Confidential Green

Subject to change without notice

Printed in USA
U. S. DOLLAR CURRENCY

Effective 02JAN2015

CW34NN-003

USE	REF NO.	LANE 2 / 3 MANDATORY	Ship Weight lbs	LIST PRICE AT PO ENTRY
-----	------------	----------------------	--------------------	---------------------------

LANE SELECTION**(Must select One)**

YOUR ORDER WILL BE LANE 2 UNLESS YOU SELECT A PACKAGE OR ATTACHMENT LISTED AS LANE 3 ONLY.

0P-9002	LANE 2 ORDER	0	NC
0P-9003	LANE 3 ORDER	0	NC
0P-9004	LANE 4 ORDER	0	NC
	Custom Products Orders Only		

MUST SELECT ONE ITEM FROM EACH CATEGORY FOUND IN THE MANDATORY ATTACHMENT SELECTION**POWERTRAIN****ENGINE**

L	351-8385	ENGINE, TIER 4I, STAGE 3B	0	NC
		FOR USE WITH LANE 3 ONLY		

SERPENTINE BELT OR AIR CONDITIONING

L	355-1670	BELT, ENG	2	NC
		FOR USE WITH LANE 3 ONLY		
		Serpentine belt for standard machine without air conditioning.		
L	364-6761	AIR CONDITIONER	55	\$2,160
		FOR USE WITH LANE 3 ONLY		
		REQUIRES: CAB, ROPS w/HEATER & DEFROSTER; LINES, HEATER, HRC		

OPERATOR ENVIRONMENT**OPERATOR STATION**

L	368-9296	BASE, OPERATOR STATION	0	NC
		FOR USE WITH LANE 3 ONLY		
		Includes grab handrails and other operator station.		
		FOR USE WITH: ROPS AND CANOPY, SUN		
L	359-7793	CAB, ROPS W/HEATER & DEFROSTER	2,315	\$26,270
		FOR USE WITH LANE 3 ONLY		
		ROPS Cab enclosure w/heater.		
		REQUIRES: LINES, HEATER, HRC OR LINES, HEATER, LRC		

SEAT SELECTION

L	364-6748	SEAT, STD VINYL, BSC	0	NC
		FOR USE WITH LANE 3 ONLY		
		Vinyl suspension seat with fold-up arm rests, retractable seat belt, weight adj., and tilt back.		
L	364-6750	SEAT, HEATED VINYL, DLX	0	\$315
		FOR USE WITH LANE 3 ONLY		
		Heater vinyl suspension seat with fold-up arm rests, retractable seat belt, weight adj., and tilt back.		

USE	REF NO.	LANE 2 / 3 MANDATORY	Ship Weight lbs	LIST PRICE AT PO ENTRY
-----	------------	----------------------	--------------------	---------------------------

OPERATOR ENVIRONMENT (CONT.)**SEAT SELECTION (Cont.)**

L	364-6749	SEAT, STD CLOTH, BSC 0 FOR USE WITH LANE 3 ONLY Cloth suspension seat with fold-up arm rests, retractable seat belt, weight adj., and tilt back. REQUIRES: CAB, ROPS w/HEATER & DEFROSTER		\$210
L	364-6751	SEAT, HEATED CLOTH, DLX 0 FOR USE WITH LANE 3 ONLY Heater cloth suspension seat with fold-up arm rests, retractable seat belt, weight adj., and tilt back. REQUIRES: CAB, ROPS w/HEATER & DEFROSTER		\$368

CONTROLS

L	367-3671	CONTROL, STD 0 FOR USE WITH LANE 3 ONLY Includes basic controls and vehicle wiring for base machine functions.		NC
L	367-3672	CONTROL, PREMIUM 22 FOR USE WITH LANE 3 ONLY Includes premier controls and wiring needed for most options.		\$1,340

TECHNOLOGY PRODUCTS**PRODUCT LINK COMMUNICATIONS**

Product Link enables the remote transmission of information about the location, operation, and condition of your equipment. Efficiently and effectively monitor performance of your assets to help keep your jobs on schedule, maintain equipment condition, and reduce the costs of owning and operating your fleet. Availability varies by country. Please contact your Cat marketing representative with questions.

P	364-6766	PRODUCT LINK, SATELLITE PL321 9 FOR USE WITH LANE 3 ONLY Satellite Product Link uses a satellite network for transmission of asset information including location, utilization and condition. For use in areas with poor or no cellular coverage.		\$1,475 NET
P	319-4492	NO PRODUCT LINK 0 FOR USE WITH LANE 3 ONLY		NC

TIRES, RIMS, AND WHEELS

L	359-7789	TIRES, STD 0 FOR USE WITH LANE 3 ONLY Eight x 13/80-R20, 20 ply tires. Inflation pressures range 35-110 PSI.		\$-1,810
L	359-7788	TIRES, MICHELIN 0 FOR USE WITH LANE 3 ONLY Eight x 13/80-R20, 20 ply tires, Michelin brand. Inflation pressures range from 35-110 PSI.		\$7,230

USE	REF NO.	LANE 2 / 3 MANDATORY	Ship Weight lbs	LIST PRICE AT PO ENTRY
-----	------------	----------------------	--------------------	---------------------------

OTHER ATTACHMENTS***OIL***

L	364-8437	OIL, HDR, FACTORY FILLED 0	NC
		FOR USE WITH LANE 3 ONLY	
L	364-8438	OIL, HDR, BIO, FACTORY FILLED 0	\$615
		FOR USE WITH LANE 3 ONLY	
		Bio degradable oil recommended for hydraulic system when environmental compliance is required or desired. Factor filled.	

INSTRUCTIONS***DECAL PACKAGES***

P	364-6752	INSTRUCTIONS, NORTH AMERICAN 0	NC
		FOR USE WITH LANE 3 ONLY	
		ANSI picto warning decals using symbols plus the word "WARNING" as required for North America (except Quebec, Canada).	

USE	REF NO.	LANE 2 / 3 OPTIONAL	Ship Weight lbs	LIST PRICE AT PO ENTRY
-----	------------	---------------------	--------------------	---------------------------

ELECTRICAL

P	364-6757	LIGHTS, HALOGEN	7 0	\$1,165 \$1,165 NI
		FOR USE WITH LANE 3 ONLY Includes 2 front and 2 rear facing Halogen flood lamps mounted to the ROPS canopy. REQUIRES: ROPS; CANOPY, SUN or CANOPY, SUN, ROPS CANNOT BE USED WITH: LIGHTS, HIGH INTENSITY		
P	367-3674	LIGHTS, HALOGEN, CAB	11 0	\$1,165 \$1,165 NI
		FOR USE WITH LANE 3 ONLY Includes 2 front and 2 rear facing Halogen flood lamps mounted to the CAB. REQUIRES: CAB, ROPS w/HEATER & DEFROSTER CANNOT BE USED WITH: LIGHTS, HIGH INTENSITY, CAB		
P	364-6755	LIGHTS, HIGH INTENSITY	11 0	\$3,675 \$3,675 NI
		FOR USE WITH LANE 3 ONLY Includes 2 front and 2 rear facing HID flood lamps mounted to the ROPS canopy. REQUIRES: ROPS; CANOPY, SUN or CANOPY, SUN, ROPS CANNOT BE USED WITH: LIGHTS, HALOGEN		
P	367-3673	LIGHTS, HIGH INTENSITY, CAB	15 0	\$3,675 \$3,675 NI
		FOR USE WITH LANE 3 ONLY Includes 2 front and 2 rear facing HID flood lamps mounted to the CAB. REQUIRES: CAB, ROPS w/HEATER & DEFROSTER CANNOT BE USED WITH: LIGHTS, HALOGEN, CAB		

OPERATOR ENVIRONMENT

P	351-3438	SUN SCREEN	4	\$402
		FOR USE WITH LANE 3 ONLY Sun screen/visor inside cab. REQUIRES: CAB, ROPS w/HEATER & DEFROSTER		
P	359-7792	ROPS	959 0	\$5,300 \$5,300 NI
		FOR USE WITH LANE 3 ONLY Includes ROPS protective structure. CANNOT BE USED WITH: CAB, ROPS w/HEATER & DEFROSTER; CANOPY, SUN		
L	369-6932	LINES, HEATER, HRC	4	\$350
		FOR USE WITH LANE 3 ONLY Includes heater lines from the engine to cab required for heating.		
P	364-6759	CANOPY, SUN, ROPS	154 0	\$1,360 \$1,360 NI
		FOR USE WITH LANE 3 ONLY Sun canopy added to ROPS machines. REQUIRES: ROPS		

USE	REF NO.	LANE 2 / 3 OPTIONAL	Ship Weight lbs	LIST PRICE AT PO ENTRY
OTHER ATTACHMENTS				
L	359-7796	INFLATION GROUP	772	\$11,530
		FOR USE WITH LANE 3 ONLY Automatic or manual air on the run system for tire inflation. REQUIRES: CONTROL, PREMIUM		
P	359-7794	SKIRT, TIRE	0 403	\$4,330 \$4,330 NI
		FOR USE WITH LANE 3 ONLY Provides wind protection to tires to retain heat.		
L	359-7790	SPRAY, EMULSION	55	\$1,960
		FOR USE WITH LANE 3 ONLY Provides emulsion tank, electric pump, and spray nozzles for each tire AND the standard water spray system. REQUIRES: CONTROL, PREMIUM		
L	364-6772	EDGE CUTTER	518 0	\$12,580 \$12,580 NI
		FOR USE WITH LANE 3 ONLY Devise for cutting and compacting material. REQUIRES: CONTROL, PREMIUM		
P	364-6763	MIRRORS, EXTERNAL	33 0	\$417 \$417 NI
		FOR USE WITH LANE 3 ONLY Includes 4 external rear-view adjustable mirrors.		
P	388-7112	COCOA MAT W/SCRAPER	44 0	\$1,750 \$1,750 NI
		FOR USE WITH LANE 3 ONLY Additional tire scraper complete with cocoa mat for water retention.		
P	359-7795	BALLAST, MODULAR	14,330 14,330	\$19,260 \$19,260 NI
		FOR USE WITH LANE 3 ONLY Modular steel adds 6.5T of weight to machine. Select to achieve 2.5T per tire load with water.		
L	364-5884	BALLAST, INTERNAL	9,480	\$14,520
		FOR USE WITH LANE 3 ONLY Steel ballast adding 4.3T of weight to machine. Select to achieve 2T per tire load with water.		
L	393-7382	BALLAST, INTERNAL, MAX	3,748	\$5,810
		FOR USE WITH LANE 3 ONLY Steel ballast adding 1.7T of weight to machine. Used to achieve 27T max machine weight when combined with Ballast, Modular and wet sand. REQUIRES: BALLAST, INTERNAL		
P	361-7380	SPARE, TIRE & WHEEL	300	\$4,925 NI
		FOR USE WITH LANE 3 ONLY Includes: 13/80-R20, 20ply tire & rim, Michelin brand. FOR USE WITH MICHELIN TIRES		
P	361-7381	SPARE, TIRE & WHEEL	300	\$2,325 NI
		FOR USE WITH LANE 3 ONLY Includes: 13/80-R20, 20ply tire & rim FOR USE WITH STD TIRES		

USE	REF NO.	LANE 2 / 3 OPTIONAL	Ship Weight lbs	LIST PRICE AT PO ENTRY
-----	------------	---------------------	--------------------	---------------------------

DOCUMENTATION***CERTIFICATES***

P	0P-4990	CERTIFICATE OF ORIGIN	0	\$165
P	354-8706	YEAR OF MANUFACTURE PLATE	0	NC
Plate attached to PIN plate showing year of Final Plant Shipping date. Required for all machines shipping to Brazil. CANNOT BE USED WITH: CE CERTIFICATION				

PACKING***EXPORT PACKING***

0P-4507	ROLL ON-ROLL OFF	0	\$575 NET
0P-6706	BUNDLE EXPORT PACKING	0	NC
This OP should be ordered for all miscellaneous orders.			

C-Series

Split-Drum Static Rollers



Model	C307	C310	C315
Drum Width	127 cm (50")	127 cm (50")	137 cm (54")
Wheelbase	335 cm (132")	335 cm (132")	355 cm (141")
Maximum kg/linear cm (lbs/inch) (Without optional weights)	41.6 (233)	53 (297)	63 (353)

Weiler Split-Drum Static Rollers

Compaction with a twist.

Weiler split-drum static rollers provide the compaction pressure you need, whether working on base materials or an asphalt mat.

The split front drums enable the outer half of the drum to rotate faster than the inner half. The result: quick work on corners and curves—without mat tearing.

OPERATOR COMFORT/ERGONOMICS

- 3-position pivot steering wheel (right, center, left) enhances operator's sight lines and speeds close work along obstacles, such as curbs
- Additional external steps and handles make it easier to enter and exit the machine
- Optional air-suspension seat keeps operators fresh during a shift
- Controls in easy-to-reach places reduce fatigue and enhance productivity and safety
- Optimal operator visibility improves comfort and safety

SERVICE AND MAINTENANCE

- Service and parts provided through Cat® Dealers
- Plastic fuel tank prevents rusting
- Sealed, braided harnesses help protect wires
- Wiring is color-coded and numbered, facilitating diagnostics
- Engine and hydraulic remote drains are easily accessible for ecology-conscious draining
- Routine service and grease points are easy to access
- Fuel and water tanks easily accessible for quick cleaning

PRESSURIZED WATER SPRAY SYSTEM

- Four nozzles at front and rear optimize water coverage on drums
- Pressurized feed system and eight intermittent spray settings provide even drum coverage
- Two 379 L (100-gallon) tanks extend time between refills
- Water spray components feature corrosion-proof materials
- Extended-life water pump standard
- Large water-tank fill port with filter enables easy and fast refilling
- Triple-filtered system reduces nozzle clogging
- Grouped ports facilitate system draining from a single location
- Easy-to-clean spray bars feature hand-removable caps
- Spray nozzles and filters can be removed by hand for periodic cleaning

OTHER KEY FEATURES

- Weiler rollers feature quality, reliable Cat® engines
- Front and rear cocoa mats
- Low-profile hood also enhances edge visibility in tight turns
- All-weather connectors

CLEARED FOR TAKEOFF

Weiler rollers were designed with optimum ground clearance for loading. An operator simply drives the roller up a trailer ramp, and it's off to the next jobsite.





Front and rear nozzles optimize drum coverage



Routine service points are easy to access



High-Pressure Jobs

Compaction comparisons between models.

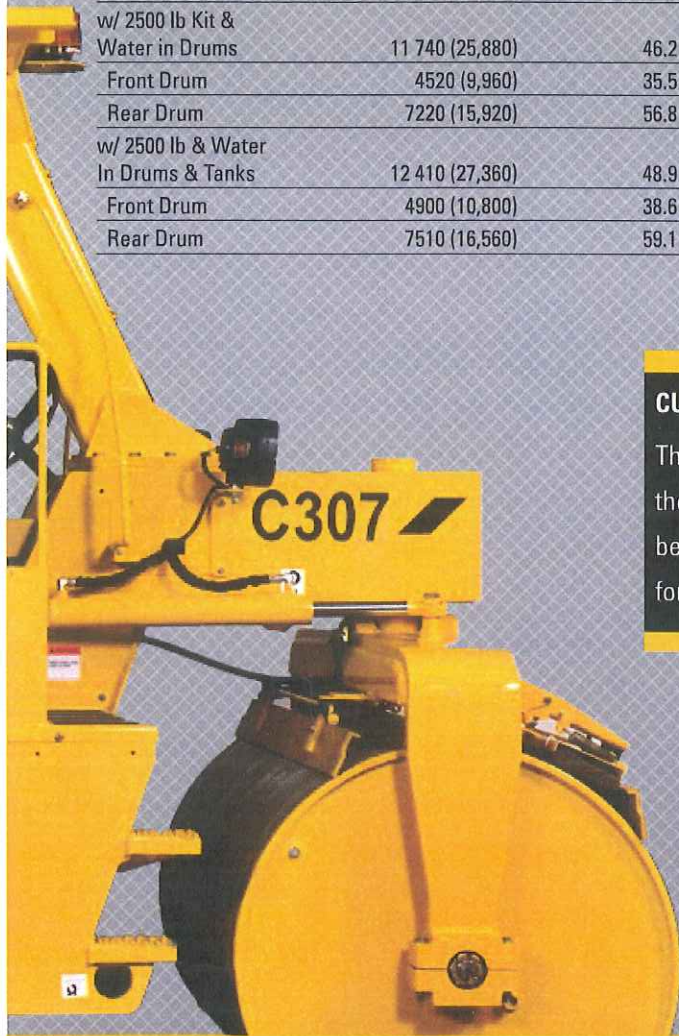
C307	Weight	Force/Linear Drum Length
	kg (lb)	kg/cm (lb/in)
Base Weight	6260 (13,800)	24.6 (138)
Front Drum	2650 (5,840)	20.9 (117)
Rear Drum	3610 (7,960)	28.4 (159)
w/ Water In Drums	8500 (18,740)	33.4 (187)
Front Drum	3500 (7,720)	27.5 (154)
Rear Drum	5000 (11,020)	39.3 (220)
w/ Water In Drums & Water Tanks	9170 (20,220)	36.1 (202)
Front Drum	3880 (8,560)	30.5 (171)
Rear Drum	5290 (11,660)	41.6 (233)
w/ 2500 lb Weight Kit	7360 (16,220)	28.9 (162)
Front Drum	2980 (6,560)	23.4 (131)
Rear Drum	4380 (9,660)	34.5 (193)
w/ 2500 lb Kit & Water in Drums	9600 (21,160)	37.8 (212)
Front Drum	3830 (8,440)	30.2 (169)
Rear Drum	5770 (12,720)	45.4 (254)
w/ 2500 lb & Water In Drums & Tanks	10 270 (22,640)	40.4 (226)
Front Drum	4210 (9,280)	33.2 (186)
Rear Drum	6060 (13,360)	47.7 (267)
w/ 5000 lb Kit	8400 (18,520)	33.0 (185)
Front Drum	3340 (7,360)	26.2 (147)
Rear Drum	5060 (11,160)	39.8 (223)
w/ 5000 lb Kit & Water In Drums	10 640 (23,460)	42.0 (235)
Front Drum	4190 (9,240)	33.0 (185)
Rear Drum	6450 (14,220)	50.7 (284)

	Weight	Force/Linear Drum Length
	kg (lb)	kg/cm (lb/in)
w/ 5000 lb Kit & Water in Drums & Tank	11 310 (24,940)	44.5 (249)
Front Drum	4570 (10,080)	36.1 (202)
Rear Drum	6740 (14,860)	53.0 (297)
w/ Both Weight Kits	9500 (20,940)	37.3 (209)
Front Drum	3670 (8,080)	28.9 (162)
Rear Drum	5830 (12,860)	45.9 (257)
w/ Both Wgt Kits & Water in Drums/Tanks	12 410 (27,360)	48.9 (274)
Front Drum	4900 (10,800)	38.6 (216)
Rear Drum	7510 (16,560)	59.1 (331)



C310	Weight	Force/Linear Drum Length
	kg (lb)	kg/cm (lb/in)
Base Weight w/ Standard 5000 lb Weight Kit	8400 (18,520)	33.0 (185)
Front Drum	3340 (7,360)	26.2 (147)
Rear Drum	5060 (11,160)	39.8 (223)
w/ Water In Drums	10 640 (23,460)	42.0 (235)
Front Drum	4190 (9,240)	33.0 (185)
Rear Drum	6450 (14,220)	50.7 (284)
w/ Water In Drums & Water Tanks	11 310 (24,940)	44.5 (249)
Front Drum	4570 (10,080)	36.1 (202)
Rear Drum	6740 (14,860)	53.0 (297)
w/ 2500 lb Weight Kit	9500 (20,940)	37.3 (209)
Front Drum	3670 (8,080)	28.9 (162)
Rear Drum	5830 (12,860)	45.9 (257)
w/ 2500 lb Kit & Water in Drums	11 740 (25,880)	46.2 (259)
Front Drum	4520 (9,960)	35.5 (199)
Rear Drum	7220 (15,920)	56.8 (318)
w/ 2500 lb & Water In Drums & Tanks	12 410 (27,360)	48.9 (274)
Front Drum	4900 (10,800)	38.6 (216)
Rear Drum	7510 (16,560)	59.1 (331)

C315	Weight	Force/Linear Drum Length
	kg (lb)	kg/cm (lb/in)
Base Weight w/ Standard Weight	9290 (20,480)	36.6 (205)
Front Drum	3560 (7,850)	28.0 (157)
Rear Drum	5730 (12,630)	45.2 (253)
w/ Water In Drums	12 460 (27,470)	49.1 (275)
Front Drum	4840 (10,660)	38.0 (213)
Rear Drum	7620 (16,810)	60.0 (336)
w/ Water In Drums & Water Tanks	13 220 (29,150)	52.1 (292)
Front Drum	5220 (11,500)	41.1 (230)
Rear Drum	8000 (17,650)	63.0 (353)



CUSTOMIZE YOUR ROLLER

The linear force of your roller can be easily adjusted by adding (or reducing) the amount of water in the drums. This simple modification helps your roller be at the most efficient, productive weight necessary to deliver the linear force you need.

Specifications

C-Series Split-Drum Static Rollers

	C307	C310	C315
Height	271 cm (106.7")	271 cm (106.7")	282 cm (111")
Length	472 cm (185.7")	472 cm (185.7")	512 cm (201.5")
Width	152 cm (63.6")	152 cm (63.6")	152 cm (63.6")
Ground Clearance	42 cm (16.5")	42 cm (16.5")	51 cm (20.0")
Wheel Base	335 cm (132")	335 cm (132")	355 cm (141")
Front Drum Diameter	102 cm (40")	102 cm (40")	122 cm (48")
Rear Drum Diameter	135 cm (53")	135 cm (53")	152 cm (60")
Front Drum Width	127 cm (50")	127 cm (50")	137 cm (54")
Rear Drum Width	127 cm (50")	127 cm (50")	137 cm (54")
Front Drum Oscillation (each way)	21	21	21
Front Drum Oscillation in Maximum Turn (each way)	2	2	2
Maximum Turn Angle (each way)	45°	45°	45°
Inside Turning Radius	12' 6"	12' 6"	12' 6"
Outside Turning Radius	19' 9"	19' 9"	19' 9"
Engine	Cat 3.4T	Cat 3.4T	Cat 3.4T
HP	63 kW (84 hp)	63 kW (84 hp)	63 kW (84 hp)
Fuel Capacity (gal)	159 L (42 gal)	159 L (42 gal)	159 L (42 gal)
Low Range Speed (mph)	8.4 kph (5.25 mph)	8.4 kph (5.25 mph)	8.4 kph (5.25 mph)
High Range Speed (mph)	16.9 kph (10.5 mph)	16.9 kph (10.5 mph)	16.9 kph (10.5 mph)
Hydraulic Tank Capacity	49 L (13 gal)	49 L (13 gal)	49 L (13 gal)
Pump Type	Closed Loop	Closed Loop	Closed Loop
Motor Type	Radial Piston	Radial Piston	Radial Piston
Water Pump Type	Diaphragm	Diaphragm	Diaphragm
Tank Fill Filtration	100 Mesh	100 Mesh	100 Mesh
Suction Filtration	100 Mesh	100 Mesh	100 Mesh
Nozzle Quantity	5 frt, 5 rear	5 frt, 5 rear	5 frt, 5 rear
Tank Capacity	756 L (200 gal)	756 L (200 gal)	756 L (200 gal)

APPLICATIONS

- Commercial and residential paving
- Highway construction
- Shoulder work
- Parking lots
- Driveways
- Asphalt resurfacing
- Confined spaces
- Curb edges
- Compacting base and finish layers of asphalt
- Compacting granular sub-base material in confined areas



Weiler Paving Solutions

The tools you need for more profitable paving.



REMIXING TRANSFER VEHICLES



ROAD WIDENERS



WINDROW ELEVATORS



ASPHALT PAVER

	E2850	E1250A
Engine	Cat C9	Cat C7
Power	300 hp (224 kW)	250 hp (186 kW)
Weight	74,500 lb (33792 kg)	51,000 lb (23000 kg)
Height (Operating)	16' (4.88 m)	11'6" (3.5 m)
Length (Shipping)	55'3" (16.8 m)	44' (13.4 m)

	W330	W430	W530	W730A
Engine	Cat C2.2	Cat C3.4	Cat C4.4	Cat C6.6
Power	49 hp (36 kW)	83 hp (62 kW)	114 hp (85 kW)	174 hp (130kW)
Weight	12,200 lb (5545 kg)	18,500 lb (8391 kg)	23,500 lb (10659 kg)	33,500 lb (15195 kg)
Max. Working Width	6' (1.8 m)	8' (2.4 m)	10' (3.0 m)	14' (4.3 m)
Max. Working Speed	150 fpm (46 mpm)	650 fpm (198 mpm)	730 fpm (222 mpm)	350 fpm (106 mpm)
Transport Speed	8 mph (12.8 km/hr)	11 mph (17.7 km/hr)	16 mph (25.7 km/hr)	14 mph (22.5 km/hr)

	E550B	E650B
Engine	Cat C4.4 Tier IVi	Cat C4.4 Tier IVi
Power	115 hp (85 kW)	115 hp (85 kW)
Weight	17,600 lb (7895 kg)	20,300 lb (9200 kg)
Height	124" (3150 mm)	124" (3150 mm)
Length	230" (5842 mm)	230" (5842 mm)

	P385
Engine	Cat C3.4
Power	83 hp (62 kW)
Weight	18,000 lb (8165 kg)
Screed Weight	3,000 lb (1361 kg)
Length	13'2" (4000 mm)
Height	70" (1778 mm)
Transport Width	102" (2591 mm)
Track Length	90" (2286 mm)
Paving Range	8'-5'8" (2.44-4.78 m)
With Cut-Off Doors	0-3'10" (0-1.1 m)

Customer Support Second to None

Value-added services that can boost your bottom line.

Your paving operation demands more than just quality products.

You can count on us, as your Cat Dealer, to provide Weiler expertise and a full range of support services that add value and contribute to your success in many ways including:

- Product and application assistance from certified paving specialists
- Training that elevates your operators to higher levels of proficiency
- Availability of off-the-shelf OE parts that meet precise specifications
- Off-season maintenance and rebuild programs to assure continued reliability and productivity
- S.O.SSM Services that help you avoid unplanned repairs and costly downtime by monitoring all key fluids
- Financing options that are matched to your operating needs and help you maximize the return on your investment



Materials and specifications are subject to change without notice. Featured machines and photos may include optional equipment. See your Cat Dealer for complete product and application information including available options. All rights reserved.

© 2014 Weiler

QEHQ1632-01

SIMPLE OPERATION. PROVEN PERFORMANCE. POWERFUL RESULTS.

C-Series Split-Drum, Static Rollers

2015 Pricing



Base Unit Description	Product Code	List Price
C307 Seven Ton Split-Drum, Static Roller Base Machine	C307-001	\$82,880.00
C310 Ten Ton Split-Drum, Static Roller Base Machine	C310-001	\$89,935.00
C315 Fifteen Ton Split-Drum, Static Roller Base Machine	C315-001	\$96,935.00
Cat C3.4 Tier III Engine w/ 84 HP		
53" Diameter, 50" Wide Rear Drum (54" Wide on C315)		
Front and Rear Cocoa Mats		
Dual, 100 Gallon Poly (HDPE) Tanks		
Five (5) Nozzles on Front and Rear Drum		
Water Pump		
Non-Required Options	Product Code	List Price
Air Suspension Seat Group	C3-100	\$1,467.00
Dual Water Pump Group	C3-112	\$647.00
Cat® Water Mat Group (Replaces Cocoa Mat)	C3-114	\$71.00
Lighting Group	C3-115	\$1,080.00
5,000 LB Weight Group (C307 Only)	C3-120	\$7,200.00
2,500 LB Weight Group (C307 and C310 Only)	C3-121	\$3,600.00