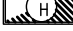





A  
7

## ELECTRICAL PLAN

SCALE: 1/8" = 1'-0"



ELECTRIC SCHEDULE						
MANUF.	MODEL	#	LAMPS TYPE	W	MNT	REMARKS
	GL-4-L200/840-EM-BSL310-WG11-DRV-UNV	LED		174	CLG	14-3/16 X 48 DIE-FORMED ALUMINUM HOUSING WITH WIRE GUARD/ BACK MOUNTED EMERGENCY LED DRIVER
ATLAS 	WLM43LED	1	LED	43	WALL	EXTERIOR, SURFACE MOUNT LIGHT FIXTURE, WITH ALUMINUM HOUSING. GLARE FREE LENS.
	SQUARE "D" NQOD OR EQUAL W/ NEUTRAL BUS & GROUNDING BUS CIRCUIT BREAKERS BOLT-IN 0000 AIC					100 AMP PANEL, FEED FROM EXISTING LP2
	INDICATES DEDICATED CIRCUIT TO LP3					

ELECTRICAL FIXTURES AND EQUIPMENT ARE SCHEDULED BY MANUFACTURER AND MODEL NUMBER FOR DESIGNINTENT ONLY. APPROVED EQUALS MAY BE SUBSTITUTED

## ELECTRICAL NOTES

- DRAWINGS AND DIAGRAMS ARE DIAGRAMMATIC AND SHALL NOT BE SCALED. REFER TO ARCHITECTURAL DRAWINGS FOR DIMENSIONS.
- ELECTRICAL WORK SHALL BE INSTALLED IN STRICT COMPLIANCE WITH THE LATEST EDITION OF THE NATIONAL ELECTRIC CODE (N.E.C.).
- PROVIDE ELECTRICAL EQUIPMENT AND ACCESSORIES REQUIRED FOR A COMPLETE AND OPERATIONAL ELECTRICAL SYSTEM AS REQUIRED BY MANUFACTURER'S INSTRUCTIONS AND DIRECTIONS FOR SYSTEMS SPECIFIED.
- SWITCHES AND RECEPTACLES SHALL BE EQUAL TO THE AMPERE RATING SHOWN IN THE PANEL SCHEDULE. RECEPTACLES SHALL BE GROUND-FAULT INTERRUPTION TYPE WHERE SHOWN OR AS REQUIRED BY CODE.
- SEE HVAC SCHEDULE FOR EQUIPMENT TO BE HARD WIRED, PROVIDE SERVICE DISCONNECT AT EACH.
- COORDINATE WORK WITH OTHER TRADES PRIOR TO COMMENCING WITH ELECTRICAL WORK.
- CONDUCTOR AND BREAKER SIZE MAY VARY PER MANUFACTURER ON THE EQUIPMENT SPECIFIED. ELECTRIC CONTRACTOR TO VERIFY SIZES WITH EXACT EQUIPMENT ORDERED PRIOR TO PURCHASING ELECTRICAL SUPPLIES.
- FIXTURE LOCATIONS ARE APPROXIMATE, EXACT LOCATIONS TO BE DETERMINED AFTER COLLABORATION WITH THE OWNER AND OTHER TRADES.
- CONTRACTOR SHALL PROVIDE SERVICE DISCONNECTS AS REQUIRED AT EXTERIOR OF BUILDING.
- PROVIDE BLOCKING FOR ELECTRICAL DEVICES AS REQUIRED FOR A SECURE APPLICATION.

## ELECTRICAL PLAN

MISSOURI DEPARTMENT  
OF TRANSPORTATION

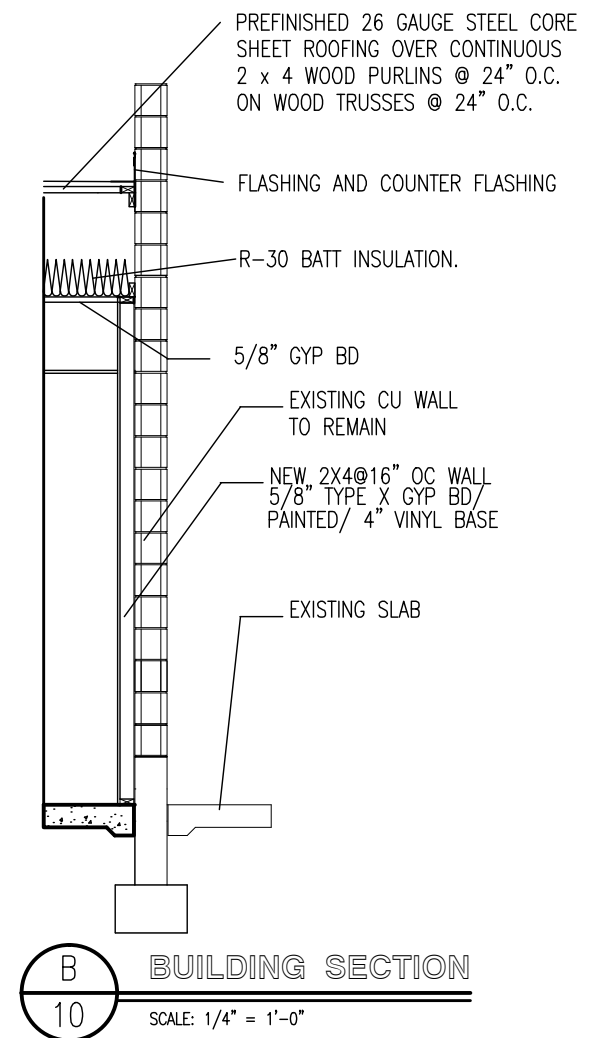
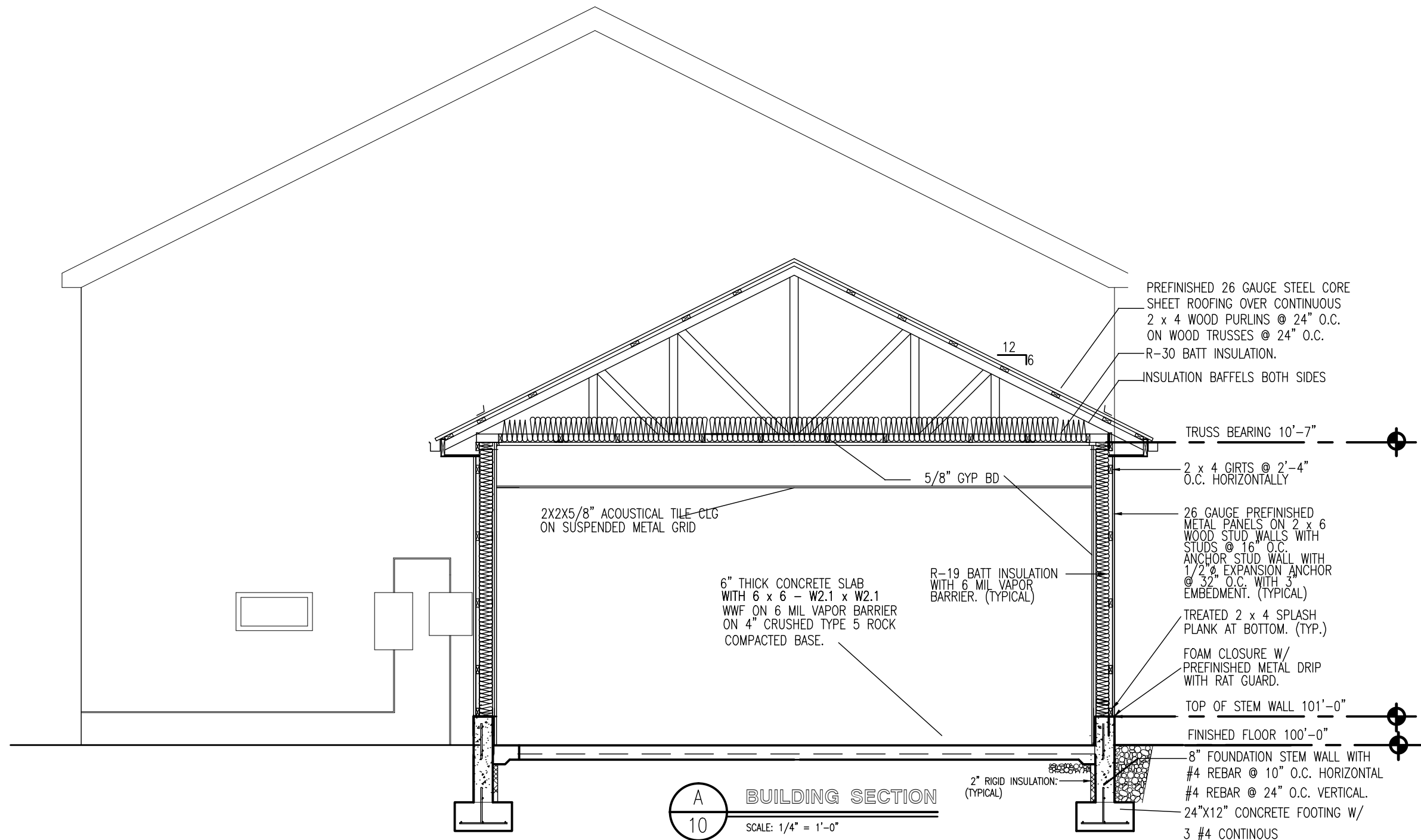
DIVISION OF GENERAL SERVICES  
FACILITIES MANAGEMENT

OSCEOLA MAINTENANCE BUILDING ADDITION

5371 NE BUS HWY 82  
OSCEOLA, MO 64776

DESIGN BY: TOM HALL  
DRAWN BY: TOM HALL  
DATE: 02/15/2016

7 OF16



# BUILDING SECTION

MISSOURI DEPARTMENT  
OF TRANSPORTATION

DIVISION OF GENERAL SERVICES  
FACILITIES MANAGEMENT

OSCEOLA MAINTENANCE BUILDING ADDITION

5371 NE BUS HWY 82

OSCEOLA, MO 64776

DESIGN BY: TOM HALL

DRAWN BY: TOM HALL

DATE: 01/15/2016

10 of 16

