

A
3 FOUNDATION PLAN
SCALE: 1/8" = 1'-0"

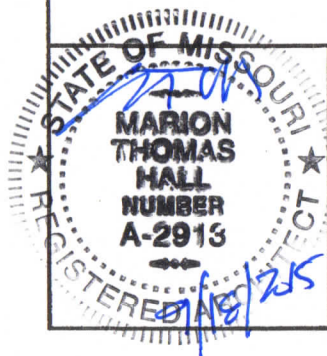


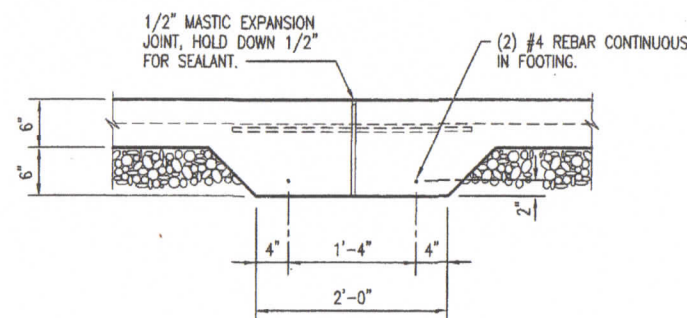
FOUNDATION PLAN

MISSOURI DEPARTMENT
OF TRANSPORTATION
DIVISION OF GENERAL SERVICES
FACILITIES MANAGEMENT

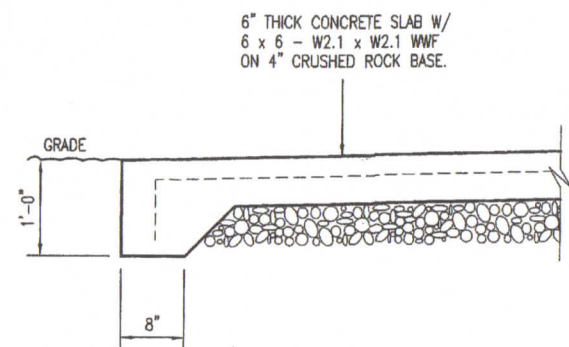
Osage Beach Project Office
749 State Highway 42, Osage Beach, MO 65065
Central District - Miller County

DESIGN BY: LARRY CARVER
DRAWN BY: LARRY CARVER
DATE: 9-11-15
Sheet
3 of 21

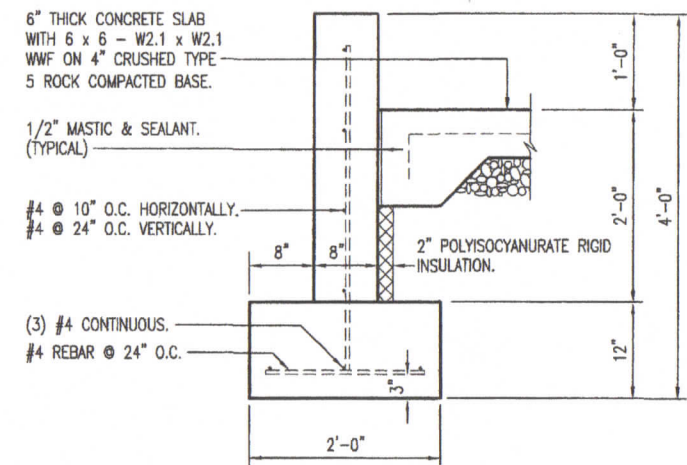




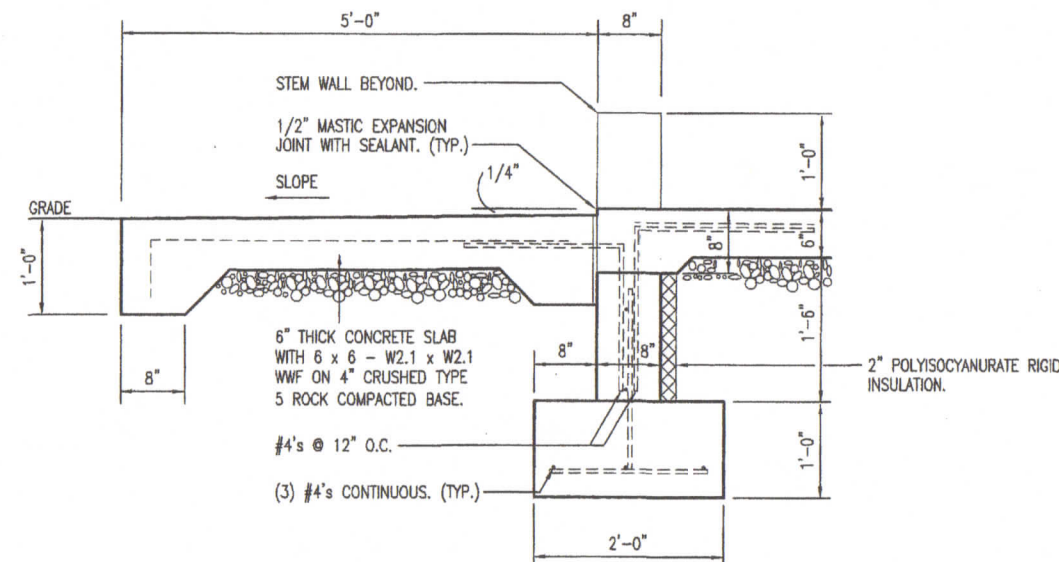
D
4
EXPANSION JOINT
SCALE: 1/2" = 1'-0"



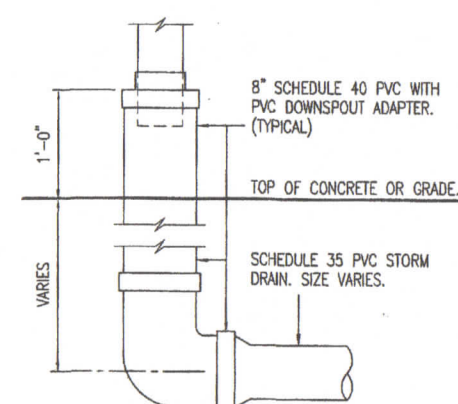
E
4
SIDEWALK SECTION
SCALE: 1/2" = 1'-0"



A
4
WALL SECTION
SCALE: 1/2" = 1'-0"



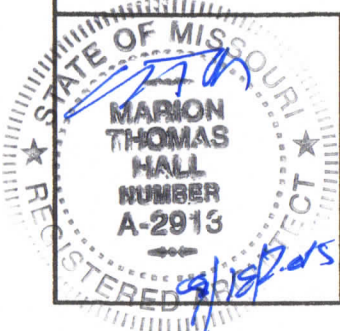
B
4
CONCRETE STOOP SECTION
SCALE: 1/2" = 1'-0"



C
4
DOWNSPOUT ADAPTER
SCALE: 1/2" = 1'-0"

CONCRETE NOTES

1. CONCRETE WORK SHALL BE EXECUTED IN STRICT COMPLIANCE WITH THE LATEST EDITION OF THE AMERICAN CONCRETE INSTITUTE (A.C.I.) MANUAL OF CONCRETE PRACTICE.
2. FOUNDATION DESIGN IS BASED UPON AN ASSUMED SOIL BEARING CAPACITY OF 2,000 PSF. IF WET OR UNUSUAL SOIL CONDITIONS ARE ENCOUNTERED, NOTIFY THE DESIGNER AND CONSTRUCTION INSPECTOR BEFORE PROCEEDING WITH THE WORK.
3. IF CONDITIONS REQUIRING ROCK EXCAVATION ARE ENCOUNTERED, NOTIFY THE DESIGNER AND CONSTRUCTION INSPECTOR BEFORE PROCEEDING WITH THE WORK.
4. ALL CONCRETE SHALL BE TYPE 1 CEMENT WITH A COMPRESSIVE STRENGTH OF 4,000 PSI @ 28 DAYS AND NOT TO EXCEED 4" SLUMP.
5. FOUNDATION PIERS AND FOOTINGS SHALL BEAR A MINIMUM OF 12 INCHES INTO UNDISTURBED SOIL AND 36 INCHES MINIMUM BELOW FINISH GRADE.
6. DEFORMED STEEL REINFORCING BARS SHALL BE: #4 AND LARGER ASTM A615 GRADE 60.
7. SEE SPECIFICATION SECTION 03300 CONCRETE FOR ADDITIONAL INFORMATION.
8. CONCRETE EXPOSED TO THE EXTERIOR SHALL RECEIVE AIR ENTRAINMENT 6% +/- 2%.
9. PROVIDE CORNER REINFORCING BARS WITH 12" MINIMUM LAP EQUAL IN SIZE AND GRADE TO CONNECTING BARS.
10. EXTERIOR CONCRETE FLATWORK SHALL HAVE A LIGHT BROOM FINISH.
11. COORDINATE WORK OF OTHER TRADES REQUIRED TO BE INSTALLED IN, UNDER, OR THROUGH CONCRETE PRIOR TO PLACEMENT OF CONCRETE. INSTALL ALL ANCHORAGES AND SLEEVES REQUIRED FOR THE INSTALLATION OF WORK BY OTHER TRADES.
12. ENTIRE PERIMETER OF BUILDING TO RECEIVE 2" POLYISOCYANURATE RIGID INSULATION BOARD.
13. SAWED CONTROL JOINTS SHALL BE CLEANED FREE OF ALL DEBRIS AND FILLED WITH SEALANT. SEE SECTION 07900.
14. COPPER PIPING RUN THROUGH CONCRETE WORK SHALL BE RUN THROUGH PVC SLEEVES.
15. ALL CONCRETE STEM WALLS TO MONOLITHICALLY POURED.

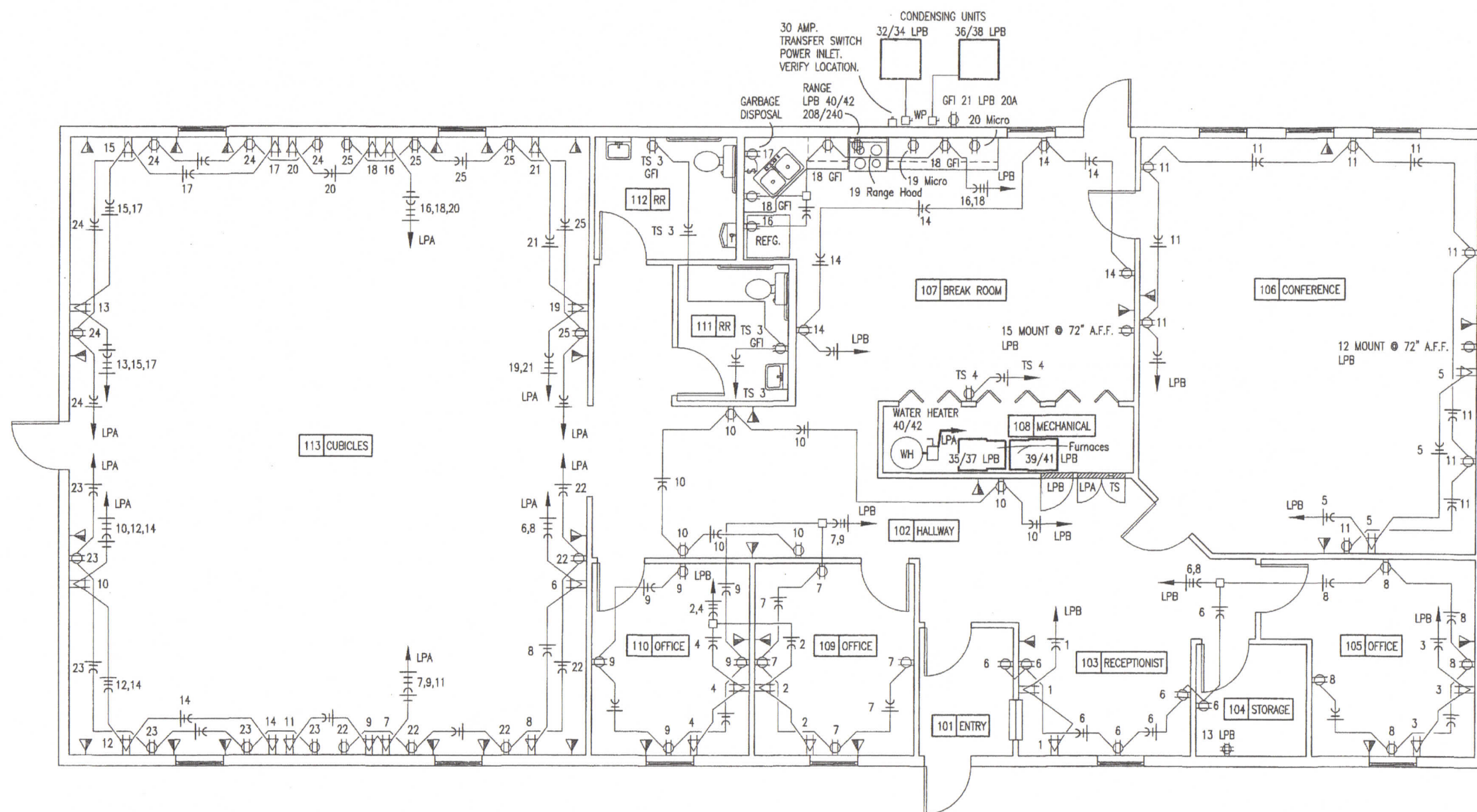


FOUNDATION DETAILS

MISSOURI DEPARTMENT
OF TRANSPORTATION
DIVISION OF GENERAL SERVICES
FACILITIES MANAGEMENT

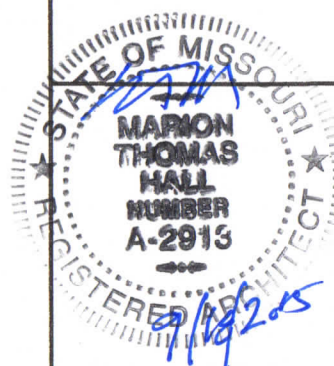
Osage Beach Project Office
749 State Highway 42, Osage Beach, MO 65065
Central District - Miller County

DESIGN BY: LARRY CARVER
DRAWN BY: LARRY CARVER
DATE: 9-11-15
Sheet
4 of 21



SEE ELECTRICAL SCHEDULE
& NOTES SHEET 21.

A POWER PLAN
20 SCALE: 1/8" = 1'-0"



POWER PLAN

MISSOURI DEPARTMENT
OF TRANSPORTATION
DIVISION OF GENERAL SERVICES
FACILITIES MANAGEMENT

Osage Beach Project Office
749 State Highway 42, Osage Beach, MO 65065
Central District - Miller County

DESIGN BY: LARRY CARVER
DRAWN BY: LARRY CARVER
DATE: 9-11-15
Sheet
20 of 21