

INDEX OF DRAWINGS

- 1 -16 COVER SHEET
- 2 -16 EXISTING FLOOR PLAN
- 3 -16 EXISTING ELEVATIONS
- 4 -16 FOUNDATION PLAN
- 5 -16 NEW FLOOR PLAN
- 6 -16 ROOF FRAMING PLAN
- 7 -16 ELECTRICAL PLAN
- 8 -16 NEW ELLEVATIONS
- 9 -16 NEW ELEVATIONS
- 10-16 BUILDING SECTION
- 11-16 WALL SECTIONS
- 12-16 DETAILS
- 13-16 SCHEDULES
- 14-16 WALL SECTIONS
- 15-16 HVAC PLAN
- 16-16 HVAC SCHEDULE

MISSOURI DEPARTMENT  
OF TRANSPORTATION  
  
OSCEOLA MAINTENANCE BUILDING ADDITION  
SOUTHWEST DISTRICT  
OSCEOLA, MISSOURI 64776  
5371 NE BUSINESS HY 82  
OSCEOLA MO,

CODE REQUIREMENTS

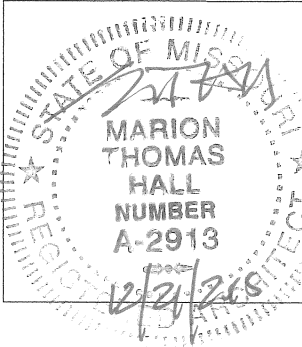
- BUILDING CODE - CURRENT IBC
- PLUMBING CODE - CURRENT IBC
- MECHANICAL CODE - CURRENT IBC
- ELECTRICAL CODE - CURRENT N.E.C.

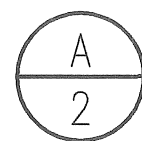
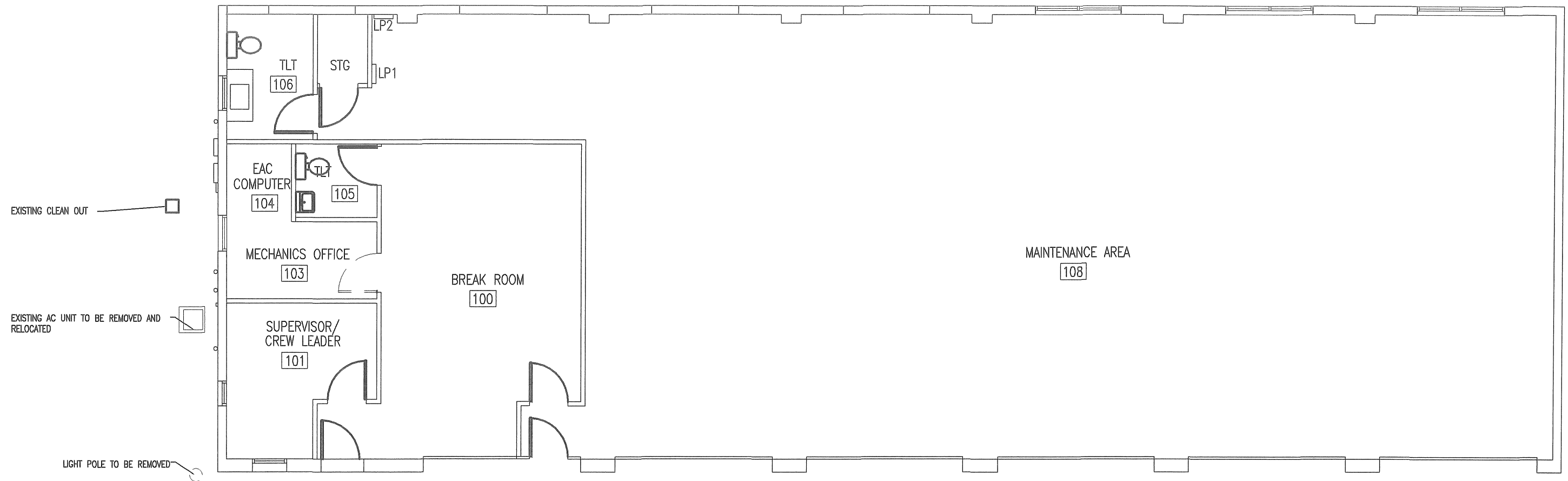
COVER SHEET

MISSOURI DEPARTMENT  
OF TRANSPORTATION  
  
DIVISION OF GENERAL SERVICES  
FACILITIES MANAGEMENT

OSCEOLA MAINTENANCE BUILDING ADDITIONL  
5371 NE BUS HWY 82  
OSCEOLA, MO 64776

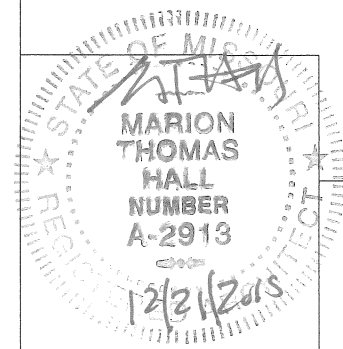
DESIGN BY: TOM HALL  
DRAWN BY: TOM HALL  
DATE: 12/21/2015  
  
1 of 16





# EXISTING FLOOR PLAN

SCALE: 1/8" = 1'-0"



EXISTING PLAN

MISSOURI DEPARTMENT  
OF TRANSPORTATION

DIVISION OF GENERAL SERVICES  
FACILITIES MANAGEMENT

OSCEOLA MAINTENANCE BUILDING ADDITION

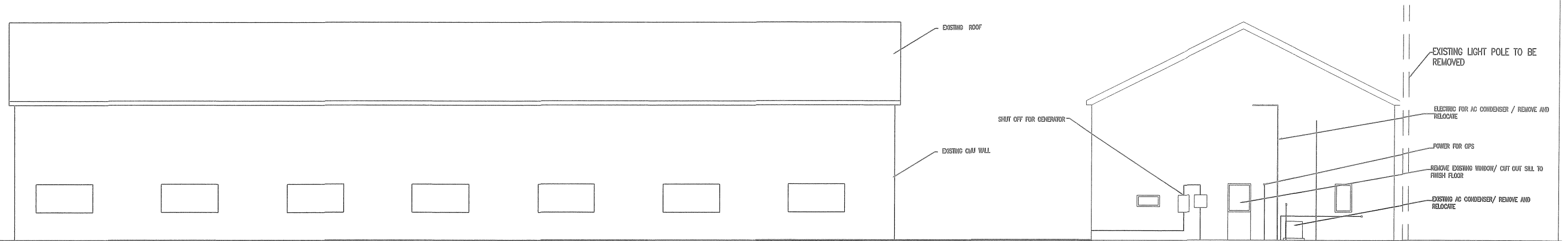
5371 NE BUS HWY 82  
OSCEOLA MO, 64776

DESIGN BY: TOM HALL

DRAWN BY: TOM HALL

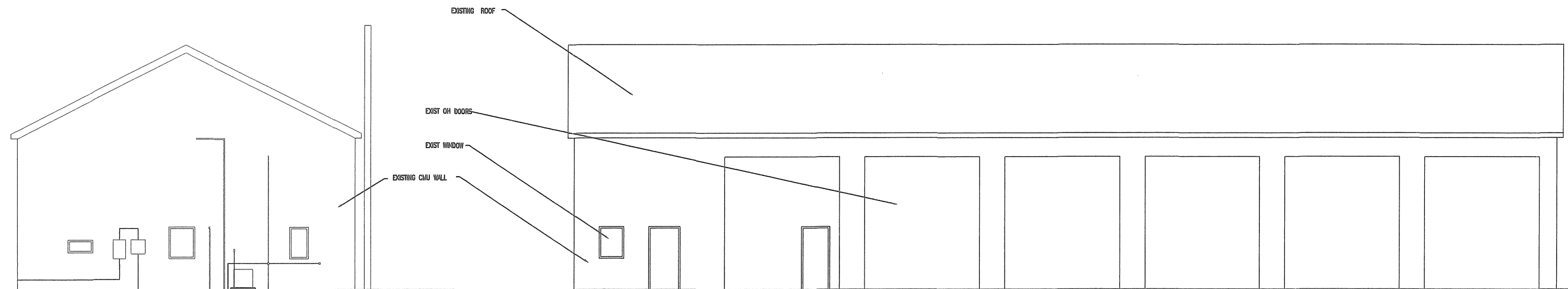
DATE: 12/21/2015

2 OF 16



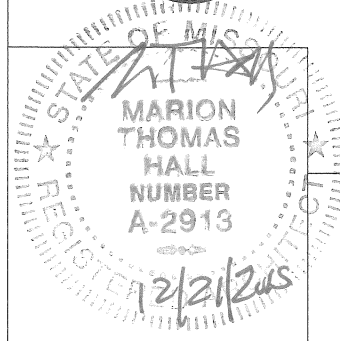
**A**  
3  
**EXISTING NORTH ELEVATION**  
SCALE: 3/32" = 1'-0"

**D**  
3  
**WEST ELEVATION/DEMO**  
SCALE: 1/16" = 1'-0"



**B**  
3  
**EXISTING WEST ELEVATION**  
SCALE: 1/16" = 1'-0"

**C**  
3  
**EXISTING SOUTH ELEVATION**  
SCALE: 1/16" = 1'-0"

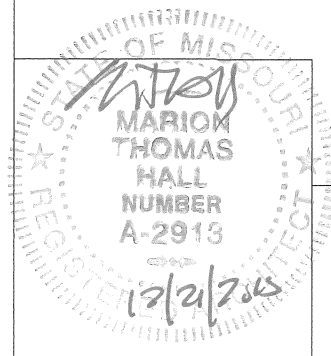
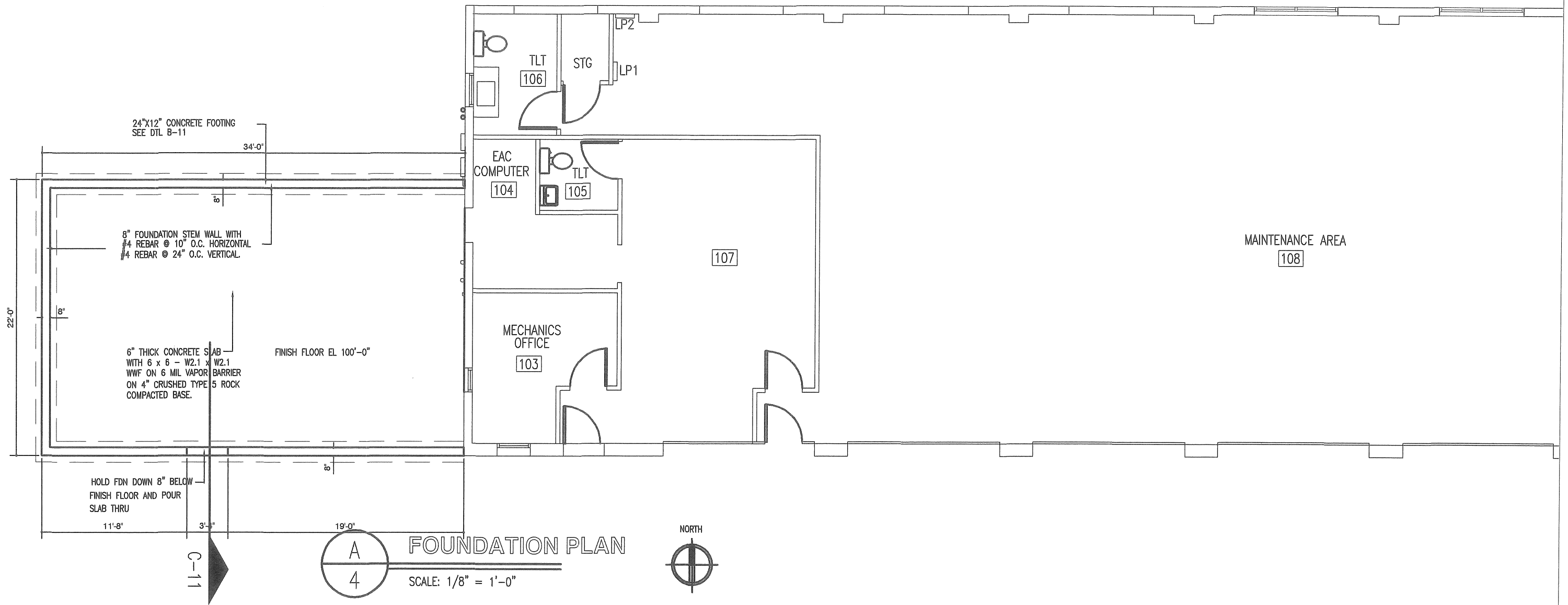


## EXISTING ELEVATIONS

MISSOURI DEPARTMENT  
OF TRANSPORTATION  
DIVISION OF GENERAL SERVICES  
FACILITIES MANAGEMENT

OSCEOLA MAINTENANCE BUILDING ADDITION  
5371 NE BUS HWY 82  
OSCEOLA, MO 64776

DESIGN BY: TOM HALL  
DRAWN BY: TOM HALL  
DATE: 12/21/2015



# FOUNDATION PLAN

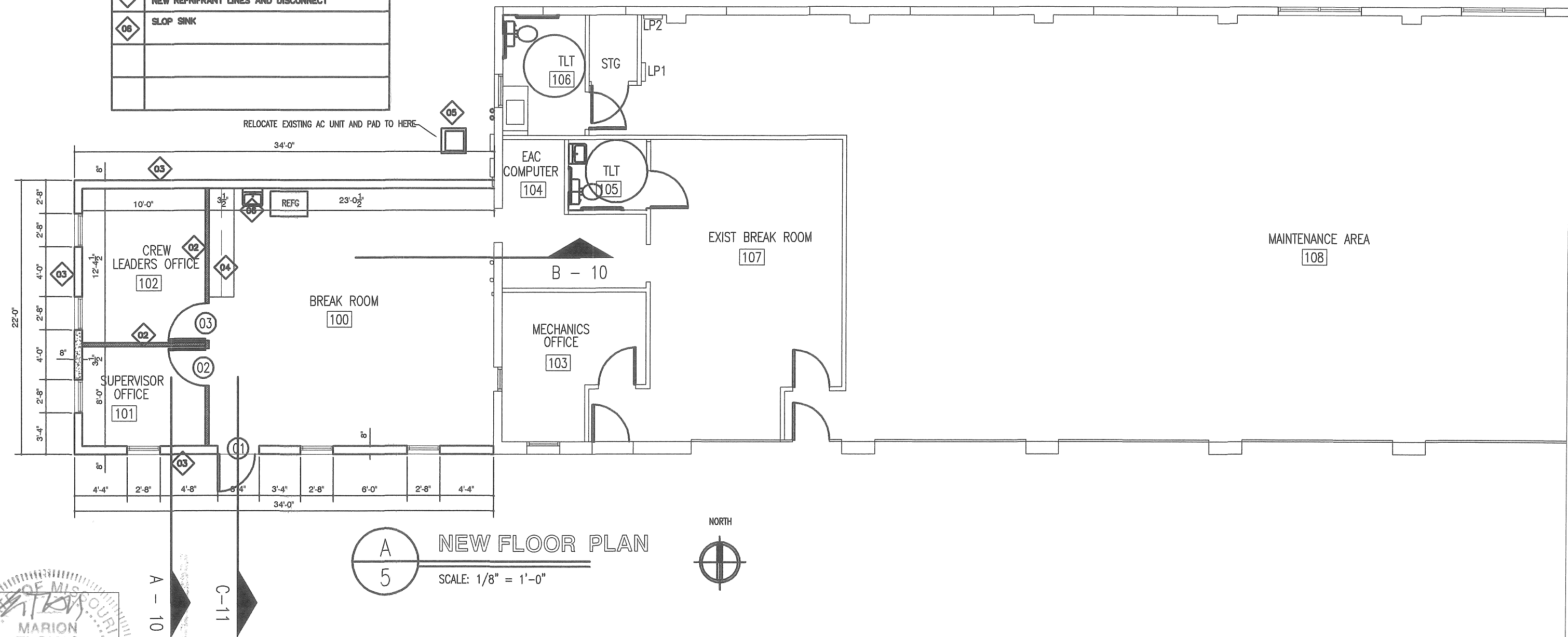
MISSOURI DEPARTMENT  
OF TRANSPORTATION  
DIVISION OF GENERAL SERVICES  
FACILITIES MANAGEMENT

OSCEOLA MAINTENANCE BUILDING ADDITION  
5371 NE BUS HWY 82  
OSCEOLA, MO 64776

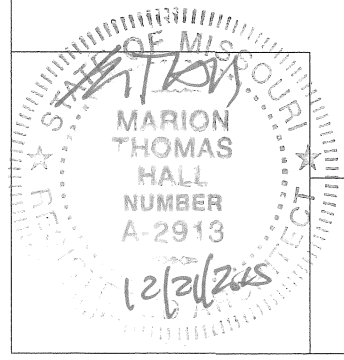
DESIGN BY: TOM HALL  
DRAWN BY: TOM HALL  
DATE: 12/21/2015  
4 of 16



PLAN KEY NOTES	
01	INDICATES EXISTING WALLS TO REMAIN
02	INDICATES NEW WALL / 2X4 @ 16" OC / TYPE X GYP BD EACH SIDE / PAINTED 2 COATS / 8' HIGH WALL
03	WOOD STUD WALLS WITH STUDS @ 16" O.C.
04	NEW PLASTIC LAMINATE COUNTER TOP W/ UPPER AND LOWER CABINETS
05	RELOCATE EXIST AIR CONDITIONER TO HERE NEW REFRIGRANT LINES AND DISCONNECT
06	SLOP SINK



**NEW FLOOR PLAN**  
 SCALE: 1/8" = 1'-0"



**NEW FLOOR PLAN**

MISSOURI DEPARTMENT  
 OF TRANSPORTATION  
 DIVISION OF GENERAL SERVICES  
 FACILITIES MANAGEMENT

OSCEOLA MAINTENANCE BUILDING ADDITION  
 5371 NE BUS HWY 82  
 OSCEOLA MO, 64776

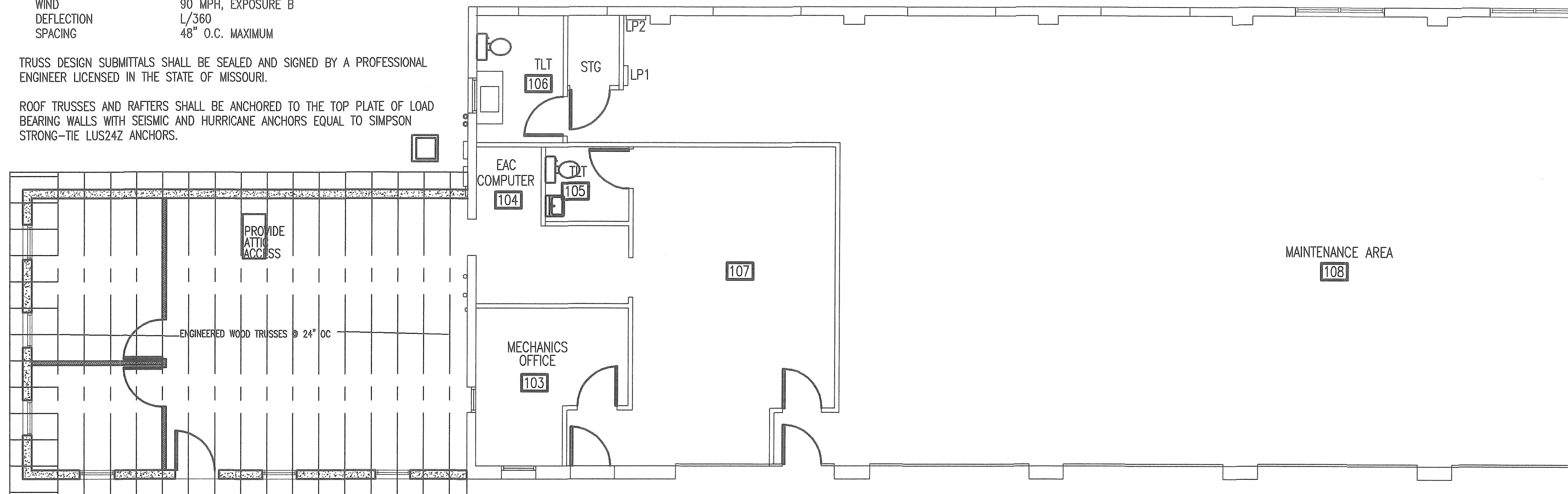
DESIGN BY: TOM HALL
DRAWN BY: TOM HALL
DATE: 12/21/2015
5 of 16

DESIGN LOADING FOR ROOF TRUSSES SHALL MEET THE FOLLOWING CRITERIA:

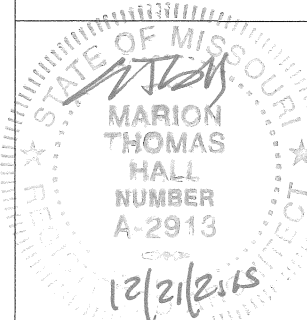
ROOF LIVE LOAD 25 PSF  
ROOF DEAD LOAD 4 PSF  
BOTTOM CORD DEAD LOAD 5 PSF  
EARTHQUAKE ZONE 1, LATEST EDITION IBC  
WIND 90 MPH, EXPOSURE B  
DEFLECTION L/360  
SPACING 48" O.C. MAXIMUM

TRUSS DESIGN SUBMITTALS SHALL BE SEALED AND SIGNED BY A PROFESSIONAL ENGINEER LICENSED IN THE STATE OF MISSOURI.

ROOF TRUSSES AND RAFTERS SHALL BE ANCHORED TO THE TOP PLATE OF LOAD BEARING WALLS WITH SEISMIC AND HURRICANE ANCHORS EQUAL TO SIMPSON STRONG-TIE LUS24Z ANCHORS.



A  
6  
ROOF FRAMING PLAN  
SCALE: 1/8" = 1'-0"



# ROOF FRAMING PLAN

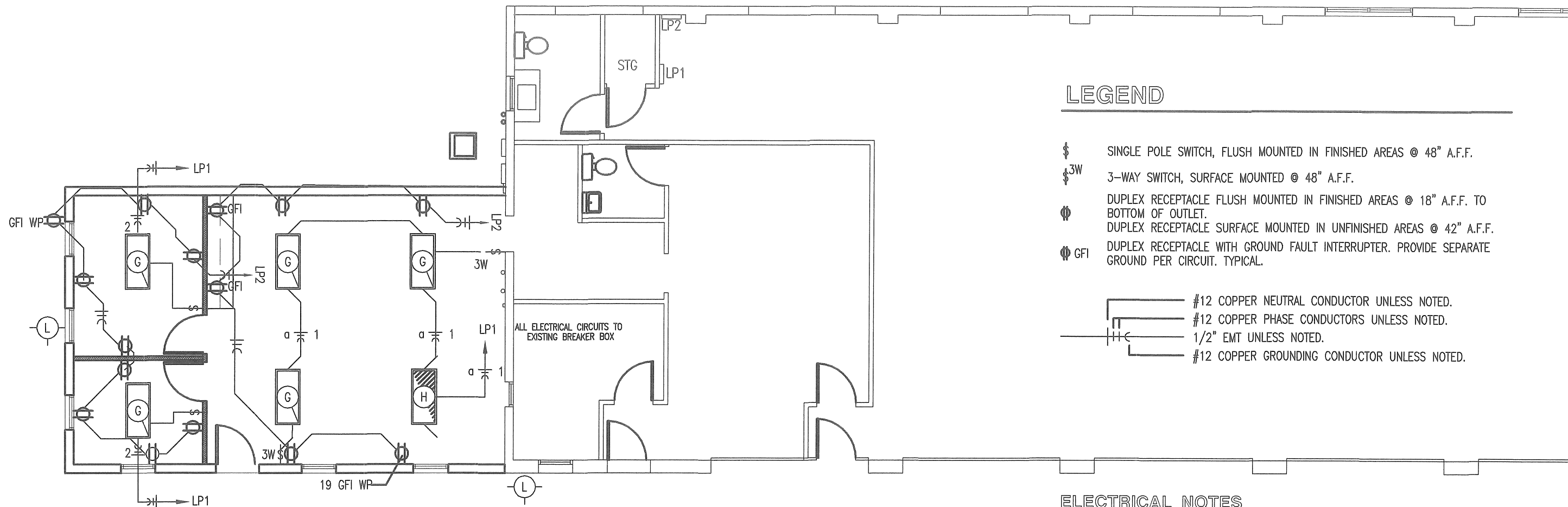
MISSOURI DEPARTMENT  
OF TRANSPORTATION  
DIVISION OF GENERAL SERVICES  
FACILITIES MANAGEMENT

OSCEOLA MAINTENANCE BUILDING ADDITION  
5371 NE BUS HWY 82  
OSCEOLA, MO 64776

DESIGN BY: TOM HALL

DRAWN BY: TOM HALL

DATE: 12/21/2015


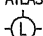



LEGEND

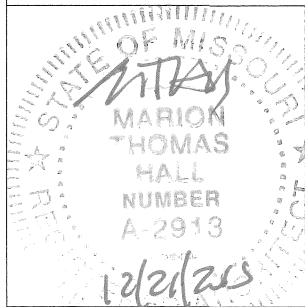
- § SINGLE POLE SWITCH, FLUSH MOUNTED IN FINISHED AREAS @ 48" A.F.F.
- §3W 3-WAY SWITCH, SURFACE MOUNTED @ 48" A.F.F.
- ⦿ DUPLEX RECEPTACLE FLUSH MOUNTED IN FINISHED AREAS @ 18" A.F.F. TO BOTTOM OF OUTLET.  
⦿ DUPLEX RECEPTACLE SURFACE MOUNTED IN UNFINISHED AREAS @ 42" A.F.F.
- ⦿ GFI DUPLEX RECEPTACLE WITH GROUND FAULT INTERRUPTER. PROVIDE SEPARATE GROUND PER CIRCUIT. TYPICAL.
- #12 COPPER NEUTRAL CONDUCTOR UNLESS NOTED.
- #12 COPPER PHASE CONDUCTORS UNLESS NOTED.
- 1/2" EMT UNLESS NOTED.
- #12 COPPER GROUNDING CONDUCTOR UNLESS NOTED.

ELECTRICAL NOTES

- DRAWINGS AND DIAGRAMS ARE DIAGRAMMATIC AND SHALL NOT BE SCALED. REFER TO ARCHITECTURAL DRAWINGS FOR DIMENSIONS.
- ELECTRICAL WORK SHALL BE INSTALLED IN STRICT COMPLIANCE WITH THE LATEST EDITION OF THE NATIONAL ELECTRIC CODE (N.E.C.).
- PROVIDE ELECTRICAL EQUIPMENT AND ACCESSORIES REQUIRED FOR A COMPLETE AND OPERATIONAL ELECTRICAL SYSTEM AS REQUIRED BY MANUFACTURER'S INSTRUCTIONS AND DIRECTIONS FOR SYSTEMS SPECIFIED.
- SWITCHES AND RECEPTACLES SHALL BE EQUAL TO THE AMPERE RATING SHOWN IN THE PANEL SCHEDULE. RECEPTACLES SHALL BE GROUND-FAULT INTERRUPTION TYPE WHERE SHOWN OR AS REQUIRED BY CODE.
- SEE HVAC SCHEDULE FOR EQUIPMENT TO BE HARD WIRED, PROVIDE SERVICE DISCONNECT AT EACH.
- COORDINATE WORK WITH OTHER TRADES PRIOR TO COMMENCING WITH ELECTRICAL WORK.
- CONDUCTOR AND BREAKER SIZE MAY VARY PER MANUFACTURER ON THE EQUIPMENT SPECIFIED. ELECTRIC CONTRACTOR TO VERIFY SIZES WITH EXACT EQUIPMENT ORDERED PRIOR TO PURCHASING ELECTRICAL SUPPLIES.
- FIXTURE LOCATIONS ARE APPROXIMATE, EXACT LOCATIONS TO BE DETERMINED AFTER COLLABORATION WITH THE OWNER AND OTHER TRADES.
- CONTRACTOR SHALL PROVIDE SERVICE DISCONNECTS AS REQUIRED AT EXTERIOR OF BUILDING.
- PROVIDE BLOCKING FOR ELECTRICAL DEVICES AS REQUIRED FOR A SECURE APPLICATION.

ELECTRIC SCHEDULE						
MANUF.	MODEL	#	LAMPS TYPE	W	MNT	REMARKS
	GL-4-L200/840-EM-BSL310-WG11-DRV-UNV	1	LED	174	CLG	14-3/16 X 48 DIE-FORMED ALUMINUM HOUSING WITH WIRE GUARD/ BACK MOUNTED EMERGENCY LED DRIVER
ATLAS 	WLM43LED	1	LED	43	WALL	EXTERIOR, SURFACE MOUNT LIGHT FIXTURE, WITH ALUMINUM HOUSING. GLARE FREE LENS.
WILLIAMS 	GL-4-L200/840-EM-BSL310-WG11-DRV-UNV	5	LED	174	CLG	14-3/16 X 48 DIE-FORMED ALUMINUM HOUSING WITH WIRE GUARD/

ELECTRICAL FIXTURES AND EQUIPMENT ARE SCHEDULED BY MANUFACTURER AND MODEL NUMBER FOR DESIGNINTEENT ONLY. APPROVED EQUALS MAY BE SUBSTITUTED

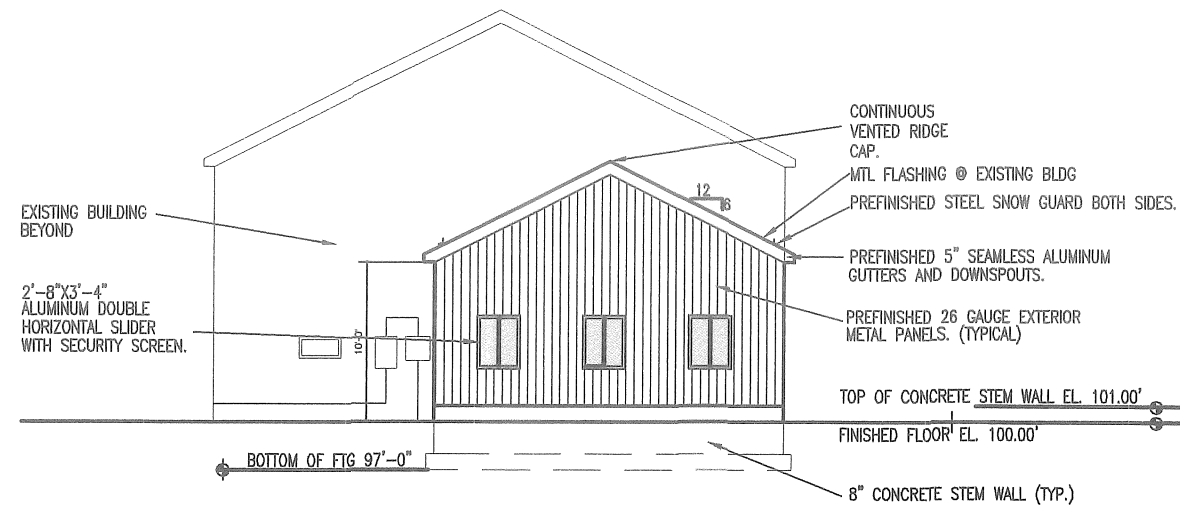


ELECTRICAL PLAN

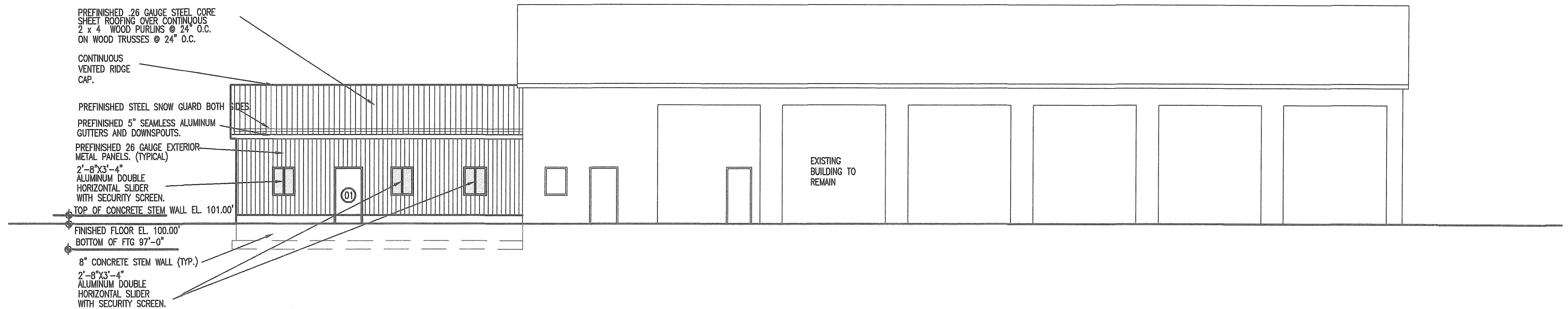
MISSOURI DEPARTMENT  
OF TRANSPORTATION  
DIVISION OF GENERAL SERVICES  
FACILITIES MANAGEMENT

OSCEOLA MAINTENANCE BUILDING ADDITION  
5371 NE BUS HWY 82  
OSCEOLA, MO 64776

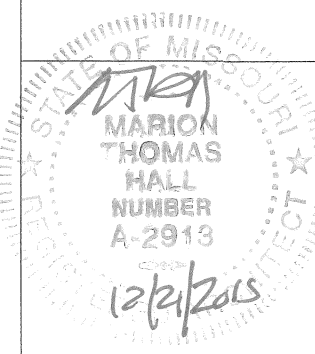
DESIGN BY: TOM HALL
DRAWN BY: TOM HALL
DATE: 12/21/2015
7 OF16



**B**  
8  
**NEW WEST ELEVATION**  
SCALE: 1/8" = 1'-0"



**A**  
8  
**NEW SOUTH ELEVATION**  
SCALE: 1/8" = 1'-0"



**NEW ELEVATIONS**

**MISSOURI DEPARTMENT  
OF TRANSPORTATION**  
DIVISION OF GENERAL SERVICES  
FACILITIES MANAGEMENT

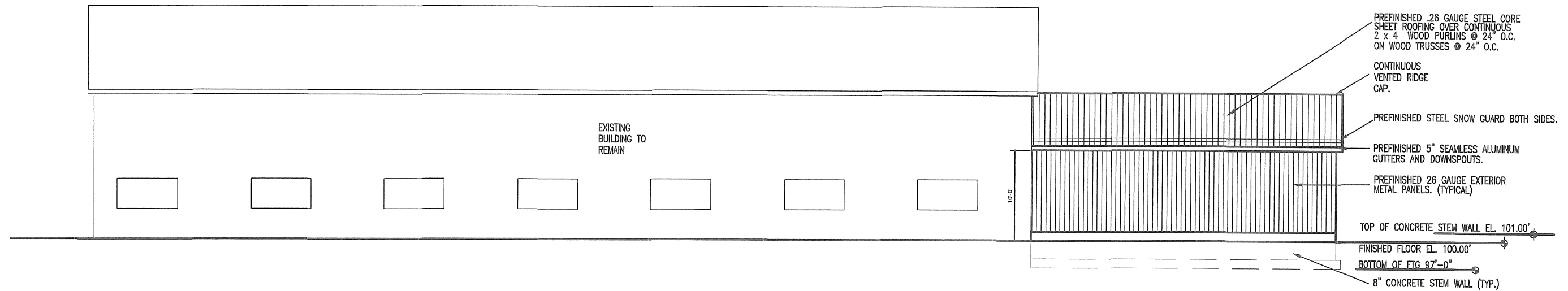
**OSCEOLA MAINTENANCE BUILDING ADDITION**  
5371 NE BUS HWY 82  
OSCEOLA, MO 64776

DESIGN BY: TOM HALL

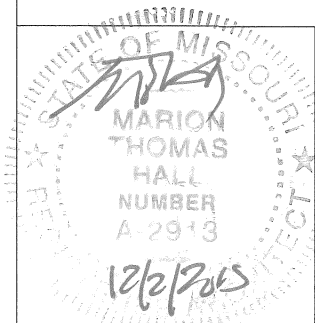
DRAWN BY: TOM HALL

DATE: 12/21/2015

8 of 16



A  
9 NEW NORTH ELEVATION  
SCALE: 1/8" = 1'-0"



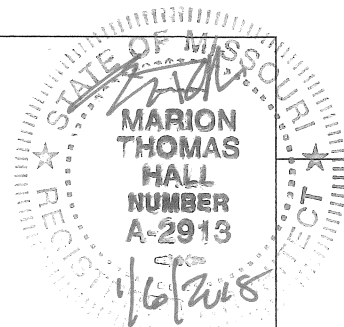
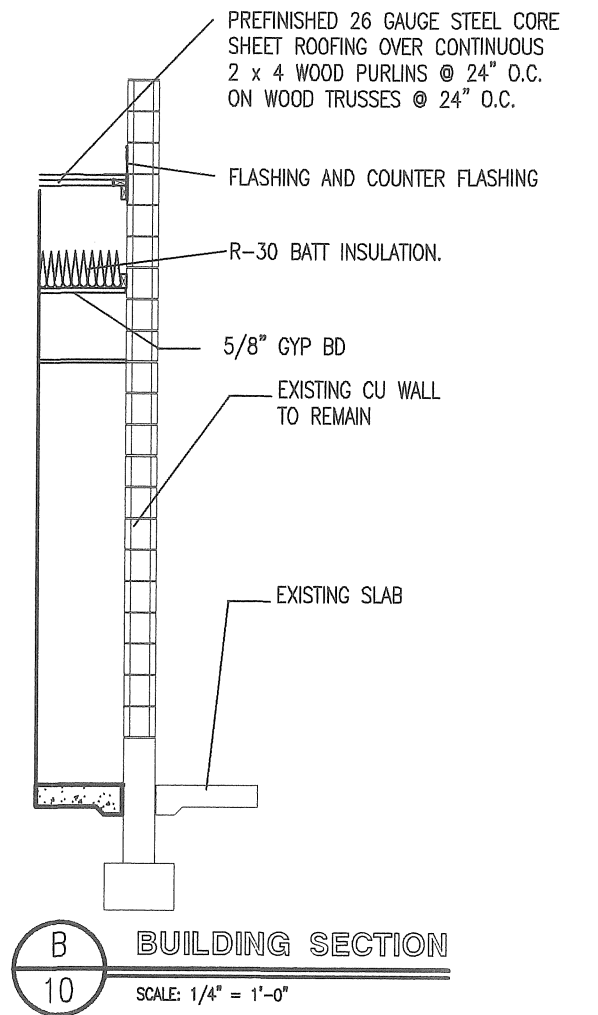
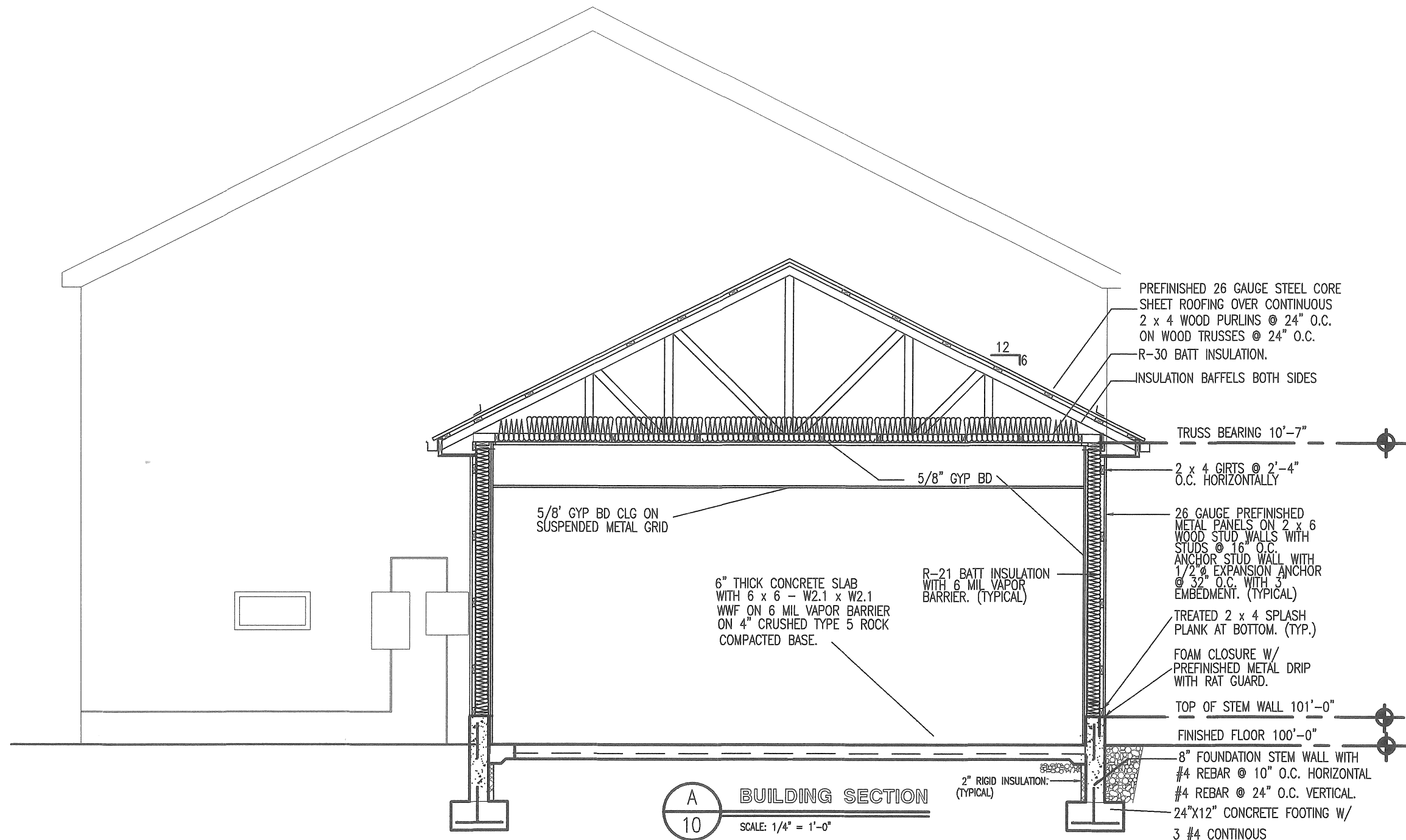
NEW ELEVATIONS

MISSOURI DEPARTMENT  
OF TRANSPORTATION  
DIVISION OF GENERAL SERVICES  
FACILITIES MANAGEMENT

OSCEOLA MAINTENANCE BUILDING ADDITION  
5371 NE BUS HWY 82  
OSCEOLA, MO 64476

DESIGN BY: TOM HALL  
DRAWN BY: TOM HALL  
DATE: 12/21/2015

9 of 16

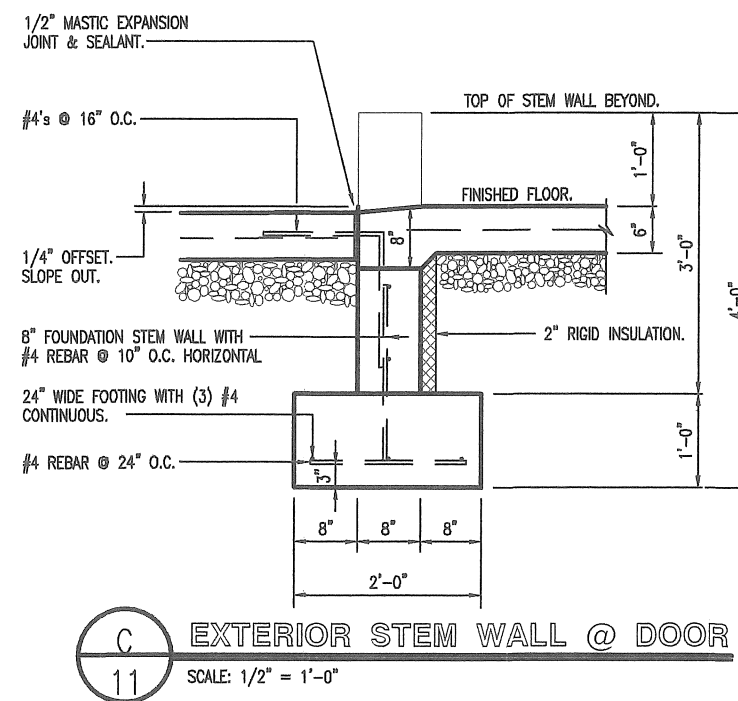
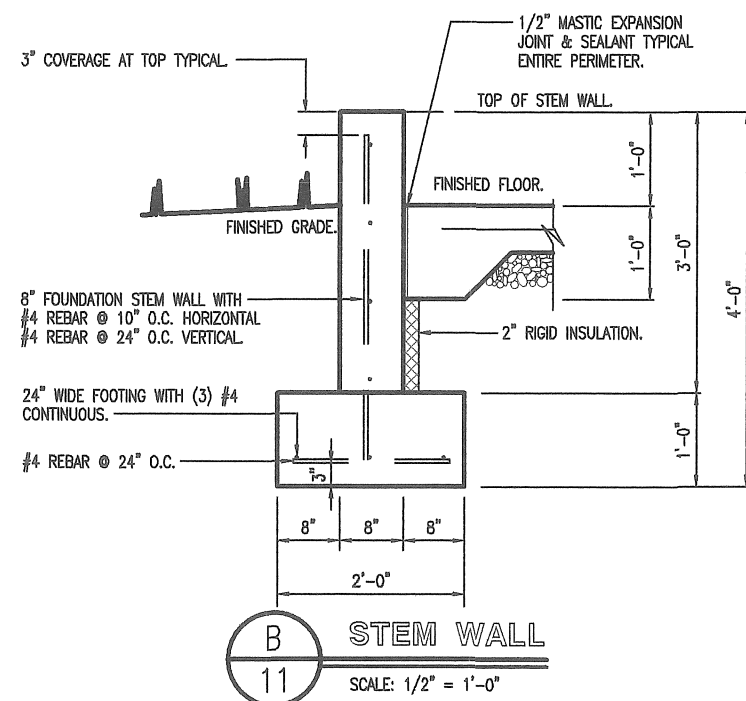
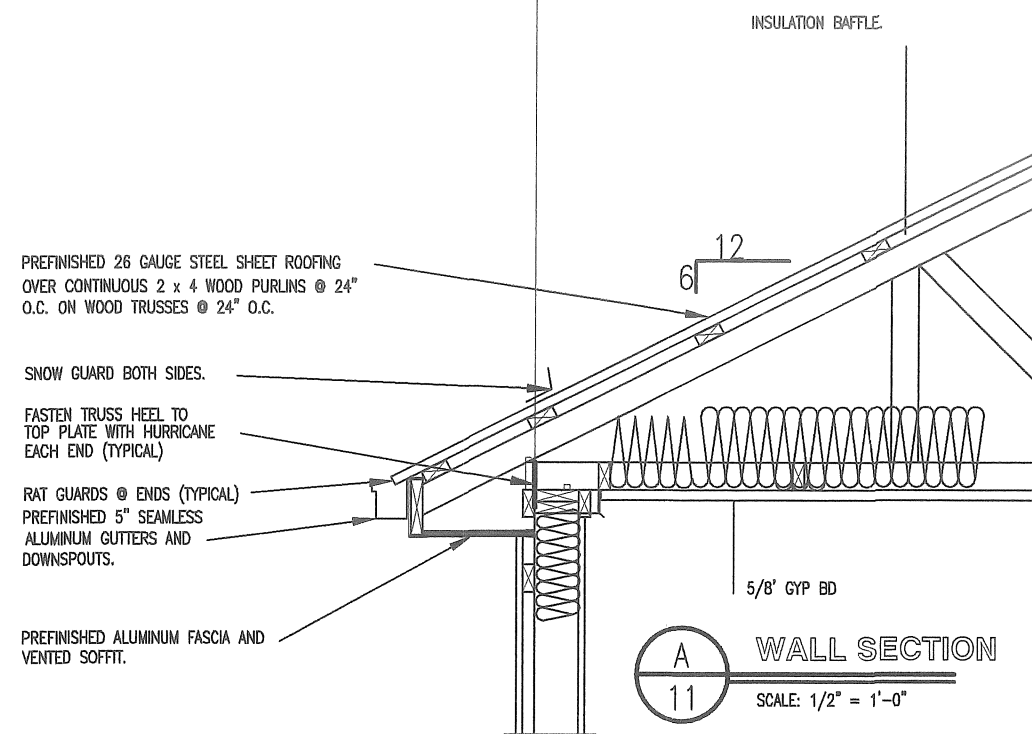


## BUILDING SECTION

MISSOURI DEPARTMENT  
OF TRANSPORTATION  
DIVISION OF GENERAL SERVICES  
FACILITIES MANAGEMENT

OSCEOLA MAINTENANCE BUILDING ADDITION  
5371 NE BUS HWY 82  
OSCEOLA, MO 64776

DESIGN BY: TOM HALL  
DRAWN BY: TOM HALL  
DATE: 12/03/2015



## CONCRETE NOTES

1. CONCRETE WORK SHALL BE EXECUTED IN STRICT COMPLIANCE WITH THE LATEST EDITION OF THE AMERICAN CONCRETE INSTITUTE (A.C.I.) MANUAL OF CONCRETE PRACTICE.
2. FOUNDATION DESIGN IS BASED UPON AN ASSUMED SOIL BEARING CAPACITY OF 2,000 PSF. IF WET OR UNUSUAL SOIL CONDITIONS ARE ENCOUNTERED, NOTIFY THE DESIGNER AND CONSTRUCTION INSPECTOR BEFORE PROCEEDING WITH THE WORK.
3. IF CONDITIONS REQUIRING ROCK EXCAVATION ARE ENCOUNTERED, NOTIFY THE DESIGNER AND CONSTRUCTION INSPECTOR BEFORE PROCEEDING WITH THE WORK.
4. ALL CONCRETE SHALL BE TYPE 1 CEMENT WITH A COMPRESSIVE STRENGTH OF 4,000 PSI @ 28 DAYS AND NOT TO EXCEED 4" SLUMP.
5. FOUNDATION PIERS AND FOOTINGS SHALL BEAR A MINIMUM OF 12 INCHES INTO UNDISTURBED SOIL AND 36 INCHES MINIMUM BELOW FINISH GRADE.
6. DEFORMED STEEL REINFORCING BARS SHALL BE: #4 AND LARGER ASTM A615 GRADE 60.
7. SEE SPECIFICATION SECTION 03300 CONCRETE FOR ADDITIONAL INFORMATION.
8. CONCRETE EXPOSED TO THE EXTERIOR SHALL RECEIVE AIR ENTRAINMENT 6% +/- 2%.
9. PROVIDE CORNER REINFORCING BARS WITH 12" MINIMUM LAP EQUAL IN SIZE AND GRADE TO CONNECTING BARS.
10. EXTERIOR CONCRETE FLATWORK SHALL HAVE A LIGHT BROOM FINISH.
11. COORDINATE WORK OF OTHER TRADES REQUIRED TO BE INSTALLED IN, UNDER, OR THROUGH CONCRETE PRIOR TO PLACEMENT OF CONCRETE. INSTALL ALL ANCHORAGES AND SLEEVES REQUIRED FOR THE INSTALLATION OF WORK BY OTHER TRADES.
12. ENTIRE PERIMETER OF BUILDING TO RECEIVE 2" POLYISOCYANURATE RIGID INSULATION BOARD.
13. SAWED CONTROL JOINTS SHALL BE CLEANED FREE OF ALL DEBRIS AND FILLED WITH SEALANT. SEE SECTION 07900.
14. ALL EXPOSED INTERIOR CONCRETE FLOORS SHALL RECEIVE A CURING/SEALING FINISH PER SPECIFICATION SECTION 03346.
15. COPPER PIPING RUN THROUGH CONCRETE WORK SHALL BE RUN THROUGH PVC SLEEVES.

## WALL SECTIONS

MISSOURI DEPARTMENT  
OF TRANSPORTATION

DIVISION OF GENERAL SERVICES  
FACILITIES MANAGEMENT

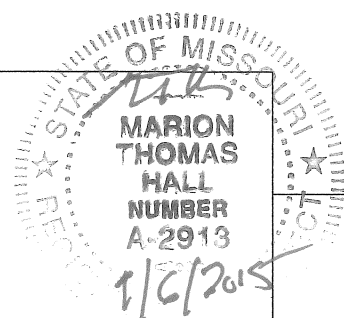
OSCEOLA MAINTENANCE BUILDING ADDITION  
5371 NE BUS HWY 82  
OSCEOLA, MO 64776

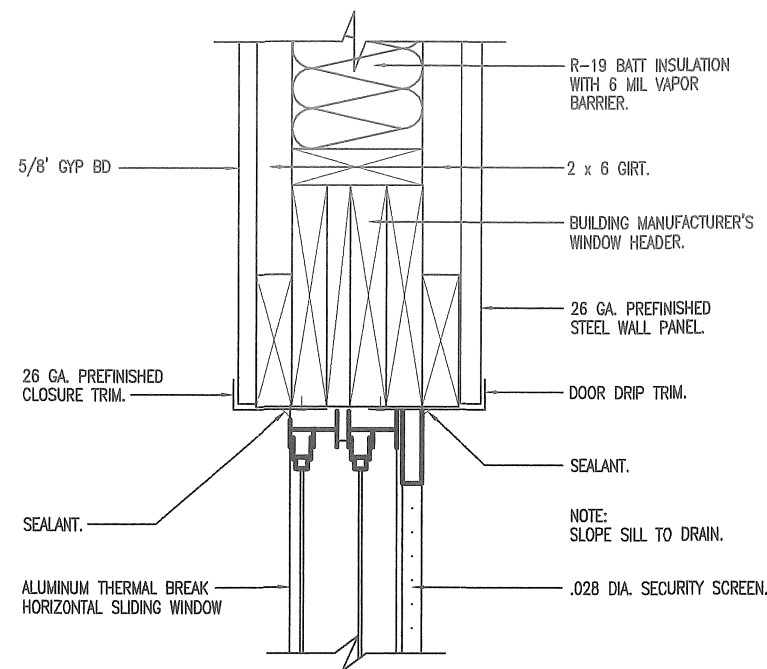
DESIGN BY: TOM HALL

DRAWN BY: TOM HALL

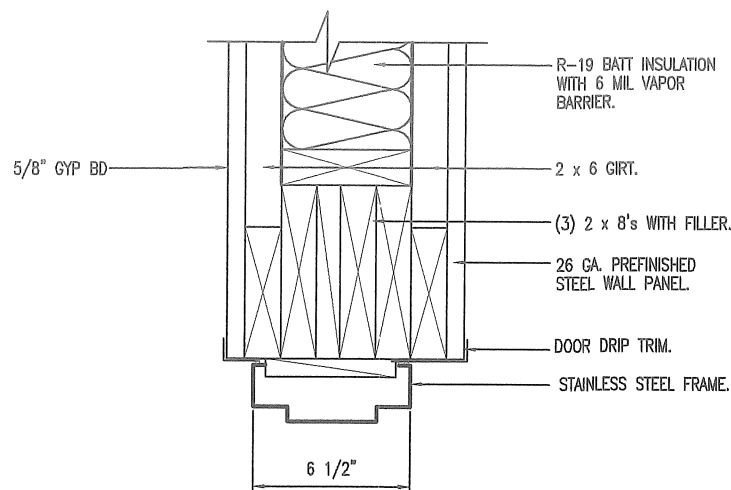
DATE: 12/03/2015

11 of 16

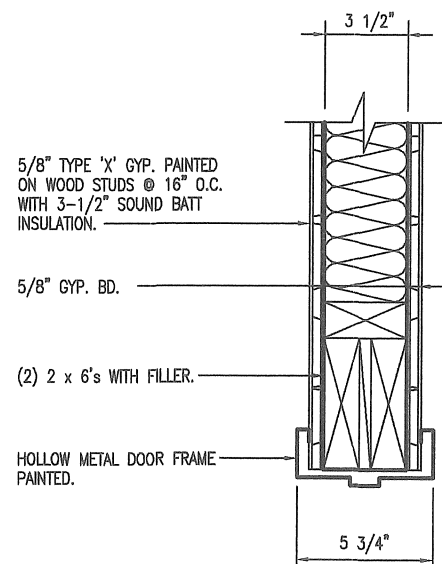




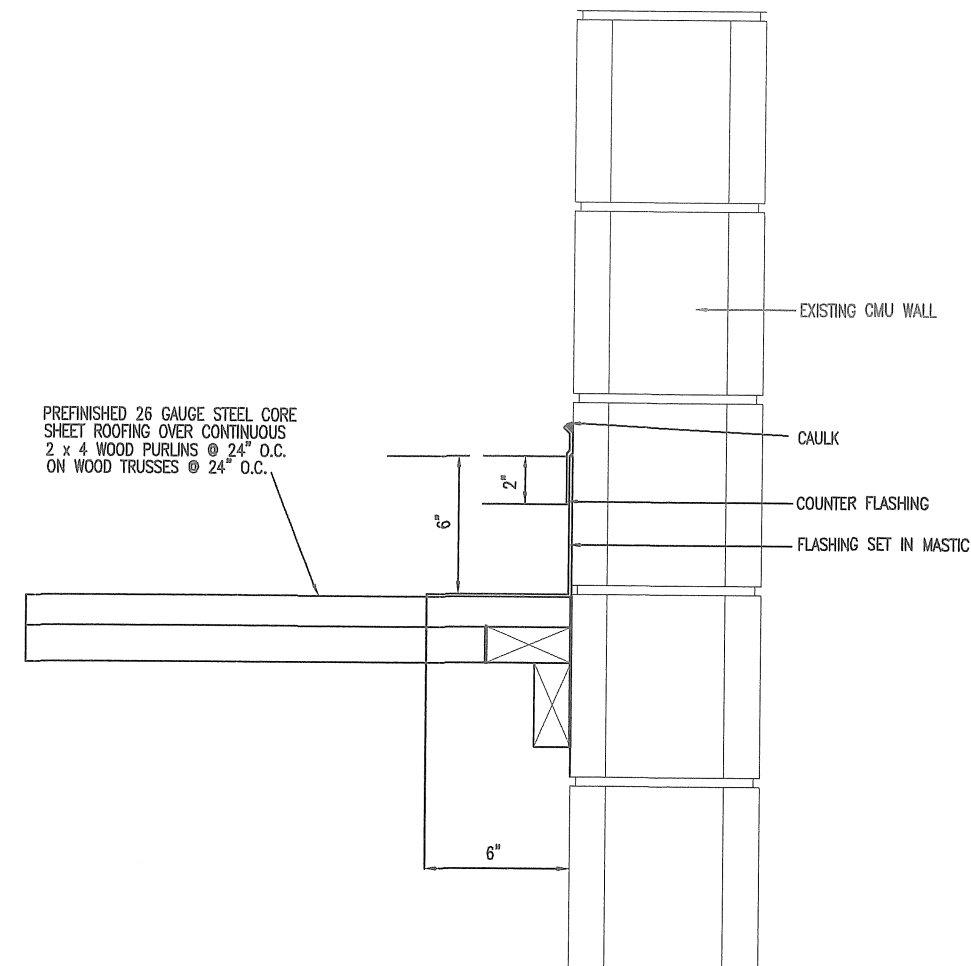
AT OFFICE AREA  
**WINDOW HEAD/JAMB**  
 A  
 12  
 SCALE: 1-1/2" = 1'-0"



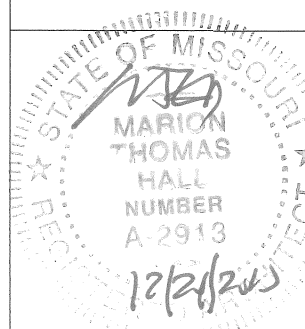
**DOOR HEAD**  
 C  
 12  
 SCALE: 1-1/2" = 1'-0"



JAMB SIMILAR  
**DOOR HEAD**  
 D  
 12  
 SCALE: 1-1/2" = 1'-0"



**FLASHING DTL**  
 E  
 12  
 SCALE: 1-1/2" = 1'-0"



DETAILS

MISSOURI DEPARTMENT  
 OF TRANSPORTATION  
 DIVISION OF GENERAL SERVICES  
 FACILITIES MANAGEMENT

OSCEOLA MAINTENANCE BUILDING ADDITION  
 5371 NE BUS HWY 82  
 OSCEOLA, MO 64776

DESIGN BY: TOM HALL  
 DRAWN BY: TOM HALL  
 DATE: 12/21/2015  
 12 of 16



FINISH SCHEDULE

ROOM NO	ROOM NAME	WALLS				FLOOR	BASE	CEILING	CLG HT	REMARKS
		NORTH	SOUTH	EAST	WEST					
100	NEW BREAK ROOM	GYP BD/PAINTED	GYP BD/PAINTED	EXIST CMU/PAINTED	GYP BD/PAINTED	CONCRETE W/SEALER	4' VINYL	2X4X5/8 ACOUS TILE		
101	SUPERVISORS OFFICE	GYP BD/PAINTED	GYP BD/PAINTED	GYP BD/PAINTED	CMU/PAINTED	CONCRETE W/SEALER	4' VINYL	2X4X5/8 ACOUS TILE		
102	CREW LEADERS OFF	GYP BD/PAINTED	GYP BD/PAINTED	GYP BD/PAINTED	GYP BD/PAINTED	CONCRETE W/SEALER	4' VINYL	2X4X5/8 ACOUS TILE		
103	EXISTING MECHANICS OFF	EXIST	EXIST	EXIST	EXIST	EXIST	EXIST	EXIST		
104	EAC COMPUTER	EXIST	EXIST	EXIST	EXIST	EXIST	EXIST	EXIST		
105	EXIST TLT	EXIST	EXIST	EXIST	EXIST	EXIST	EXIST	EXIST		
106	EXIST TLT	EXIST	EXIST	EXIST	EXIST	EXIST	EXIST	EXIST		
106	EXIST TLT	EXIST	EXIST	EXIST	EXIST	EXIST	EXIST	EXIST		

INSULATED H.M.  
DOOR AND FRAME  
PAINTED



A

DOOR SCHEDULE

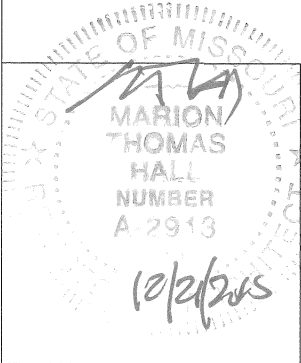
DOORS											
NO	OPG	TYPE	SIZE			HARDWARE REMARKS	TYPE	FR	NOTES		NO
			WIDTH	HEIGHT	THK						
01	3'-4"x7'-2"	A	3'-0"	7'-0"		1 1/2 PAIR BUTTS/LOCLSET, ADA APPROVED LEVER HANDLE/ CLOSER/ THRESHOLD/WEATHER STRIP		H.M.	INSULATED DOOR AND FRAME/ PAINTED/ 2 COATS		
02	3'-4"x7'-2"	A	3'-0"	7'-0"		1 1/2 PAIR BUTTS/PRIVACY LOCKT, ADA APPROVED LEVER HANDLE		H.M.	DOOR AND FRAME PAINTED/ 2 COATS		
03	3'-4"x7'-2"	A	3'-0"	7'-0"		1 1/2 PAIR BUTTS/PRIVACY LOCKT, ADA APPROVED LEVER HANDLE		H.M.	DOOR AND FRAME PAINTED/ 2 COATS		

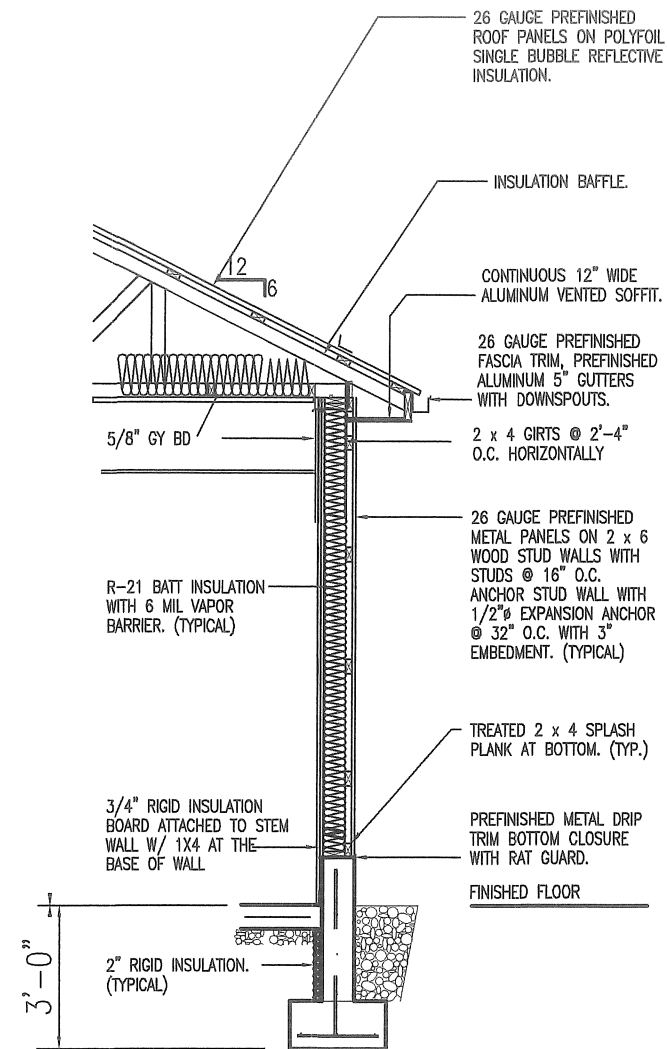
SCHEDULES

MISSOURI DEPARTMENT  
OF TRANSPORTATION  
DIVISION OF GENERAL SERVICES  
FACILITIES MANAGEMENT

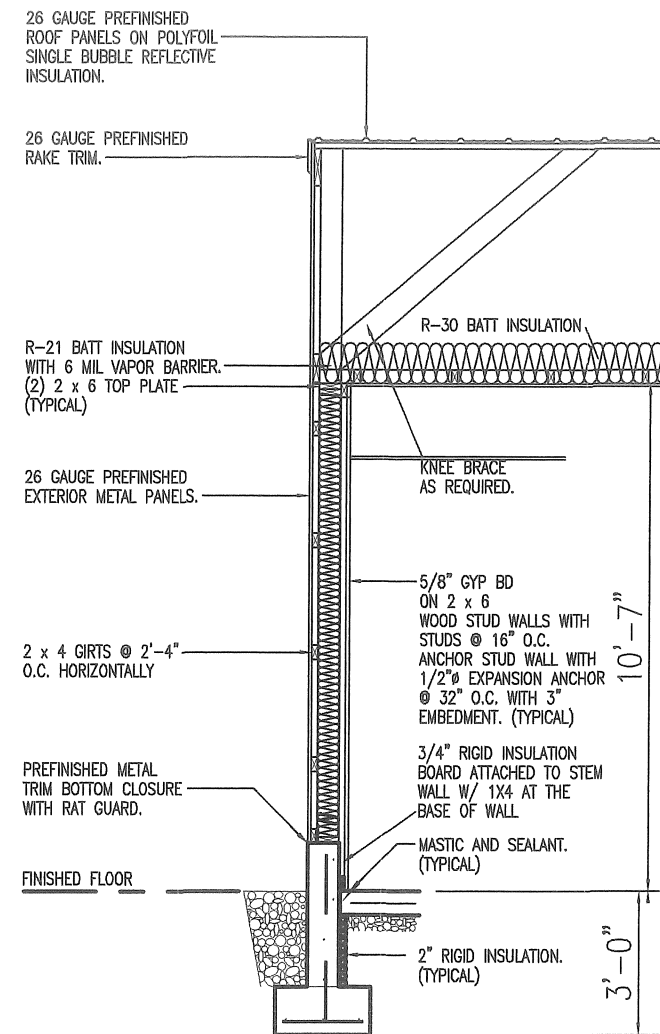
OSCEOLA MAINTENANCE BUILDING ADDITION  
5371 NE BUS HWY 82  
OSCEOLA, MO 64776

DESIGN BY: TOM HALL  
DRAWN BY: TOM HALL  
DATE: 12/21/2015  
13 of 16





**A** SIDEWALL SECTION  
14 SCALE: 1/4" = 1'-0"



**B** ENDWALL SECTION  
14 SCALE: 1/4" = 1'-0"

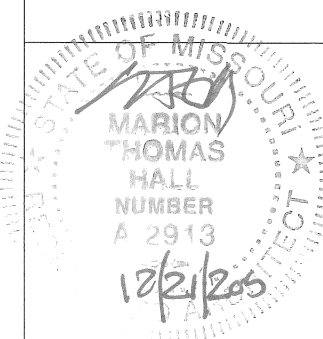
## WALL SECTIONS

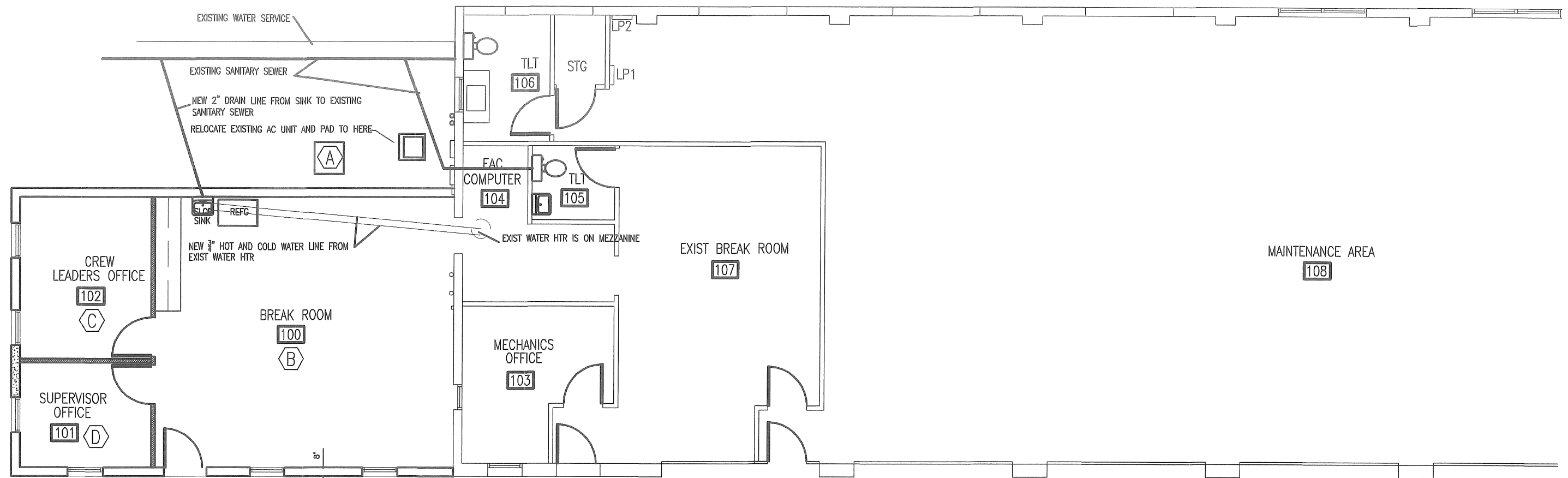
MISSOURI DEPARTMENT  
OF TRANSPORTATION  
DIVISION OF GENERAL SERVICES  
FACILITIES MANAGEMENT

OSCEOLA MAINTENANCE BUILDING ADDITION  
5371 NE BUS HWY 82  
OSCEOLA, MO 64776

DESIGN BY: TOM HALL  
DRAWN BY: TOM HALL  
DATE: 12/21/2015

14 of 16



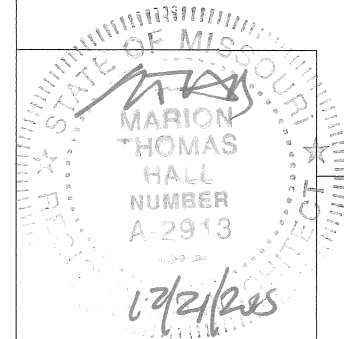


**A**  
**5**  
**MECHANICAL PLAN**  
SCALE: 1/8" = 1'-0"



## MECHANICAL NOTES

1. DRAWINGS AND DIAGRAMS ARE DIAGRAMMATIC AND SHALL NOT BE SCALED. REFER TO ARCHITECTURAL DRAWINGS FOR DIMENSIONS.
2. MECHANICAL WORK SHALL BE INSTALLED IN STRICT COMPLIANCE WITH THE LATEST EDITION OF THE IBC MECHANICAL CODE.
3. PROVIDE EQUIPMENT AND APPURTENANCES NOT NECESSARILY SHOWN OR SPECIFIED BUT NEEDED FOR COMPLETE AND PROPER INSTALLATION.
4. ALL EQUIPMENT AND MATERIALS, IN PARTICULAR VALVES, FILTERS, MOTORS, AND CONTROLS SHALL BE ARRANGED TO PROVIDE PROPER CLEARANCE FOR SERVICE, MAINTENANCE AND INSPECTION.
5. MECHANICAL SUBCONTRACTOR SHALL FULLY COORDINATE ALL WORK WITH PLUMBING AND ELECTRICAL WORKERS PRIOR TO COMMENCING OF THE MECHANICAL INSTALLATION.
6. PROVIDE BLOCKING TO HVAC DEVICES AS REQUIRED FOR A SECURE APPLICATION.



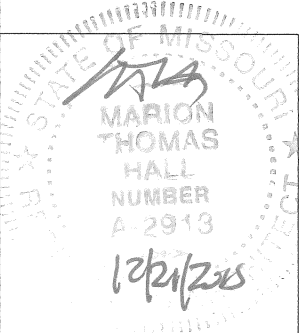
**HVAC PLAN**

**MISSOURI DEPARTMENT  
OF TRANSPORTATION**  
DIVISION OF GENERAL SERVICES  
FACILITIES MANAGEMENT

**OSCEOLA MAINTENANCE BUILDING ADDITION**  
5371 NE BUS HWY 82  
OSCEOLA, MO 64776

DESIGN BY: TOM HALL  
DRAWN BY: TOM HALL  
DATE: 12/21/2015  
15 of 16

HVAC SCHEDULE						
SYM.	UNIT	MANUFACTURER	BTU OUTPUT	FUEL	VOLTAGE	REMARKS
A	38MGQF36-3COND UNIT 53DA-900CONDESATE PUMP (4)MS141225 25' INSULATED LINE SET	CARRIER		ELECTRIC	115	
B	BREAK ROOM (2)MBQB12C-3 1 TON CEILING CASSETT (2)40MBQB01C CASSETT GRILL	CARRIER			115	
C	LEAD OFFICE (1)40MBQB09C-3 3/4 TON CLG CASSETT (1)40MBQB01CCASSETT GRILL	CARRIER			115	
D	SUPERVISOR OFFICE (1)40MBQB09C-3 3(3/4 TON CLG CASSETT (1) 40MBQB01C (CASSETT GRILL	CARRIER			115	
E						



HVAC SCHEDULE

MISSOURI DEPARTMENT  
OF TRANSPORTATION  
DIVISION OF GENERAL SERVICES  
FACILITIES MANAGEMENT

OSCEOLA MAINTENANCE BUILDING ADDITION  
5371 NE BUS HWY 82  
OSCEOLA, MO 64776

DESIGN BY: TOM HALL  
DRAWN BY: TOM HALL  
DATE: 12/21/2015  
16 of 16