

INDEX OF DRAWINGS

| | |
|---------|-----------------------------|
| 1 - 21 | COVER SHEET |
| 2 - 21 | SITE PLAN |
| 3 - 21 | FOUNDATION PLAN |
| 4 - 21 | FOUNDATION DETAILS |
| 5 - 21 | FLOOR PLAN |
| 6 - 21 | SCHEDULES |
| 7 - 21 | EAST & WEST ELEVATIONS |
| 8 - 21 | NORTH & SOUTH ELEVATIONS |
| 9 - 21 | INTERIOR ELEVATIONS |
| 10 - 21 | HEAD & JAMB DETAILS |
| 11 - 21 | HEAD & JAMB DETAILS |
| 12 - 21 | BUILDING SECTION |
| 13 - 21 | REFLECTED CEILING PLAN |
| 14 - 21 | WALL SECTIONS |
| 15 - 21 | ROOF FRAMING PLAN |
| 16 - 21 | PLUMBING PLAN |
| 17 - 21 | MECHANICAL PLAN |
| 18 - 21 | PLUMBING & MECHANICAL NOTES |
| 19 - 21 | LIGHTING PLAN |
| 20 - 21 | POWER PLAN |
| 21 - 21 | ELECTRICAL PANELS |

MISSOURI DEPARTMENT OF TRANSPORTATION

CENTRAL DISTRICT
OSAGE BEACH PROJECT OFFICE
749 State Highway 42
OSAGE BEACH, MISSOURI 65065
Miller County

CODE REQUIREMENTS

BUILDING CODE: ANALYSIS BASED ON 2013 INTERNATIONAL BUILDING CODE
2013 INTERNATIONAL PLUMBING CODE
2013 INTERNATIONAL MECHANICAL CODE
2013 NATIONAL ELECTRICAL CODE

USE GROUP; B (BUSINESS)
S-1 (MODERATE HAZARD STORAGE)

DESIGNED AS NON-SEPERATED USE GROUPS

CONSTRUCTION TYPE: VB COMBUSTIBLE, NON PROTECTED

ALLOWABLE AREA: 3600 SF
BUSINESS: 3460 SF
STORAGE: 140 SF

ALLOWABLE HEIGHT: 1 STORY
PROPOSED HEIGHT: 1 STORY

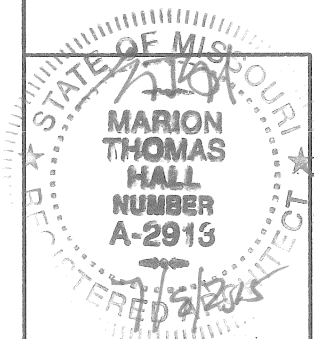
OCCUPANT LOAD:
BUSINESS: 1000SF/100SF PER OCCUPANT = 10 OCCUPANTS
STORAGE: 8000SF/4000SF PER OCCUPANT = 2 OCCUPANTS
TOTAL: 19 OCCUPANTS

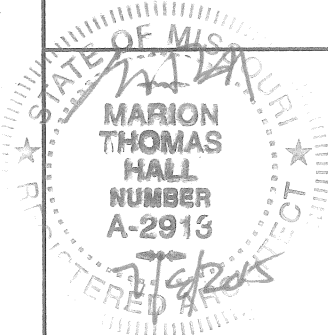
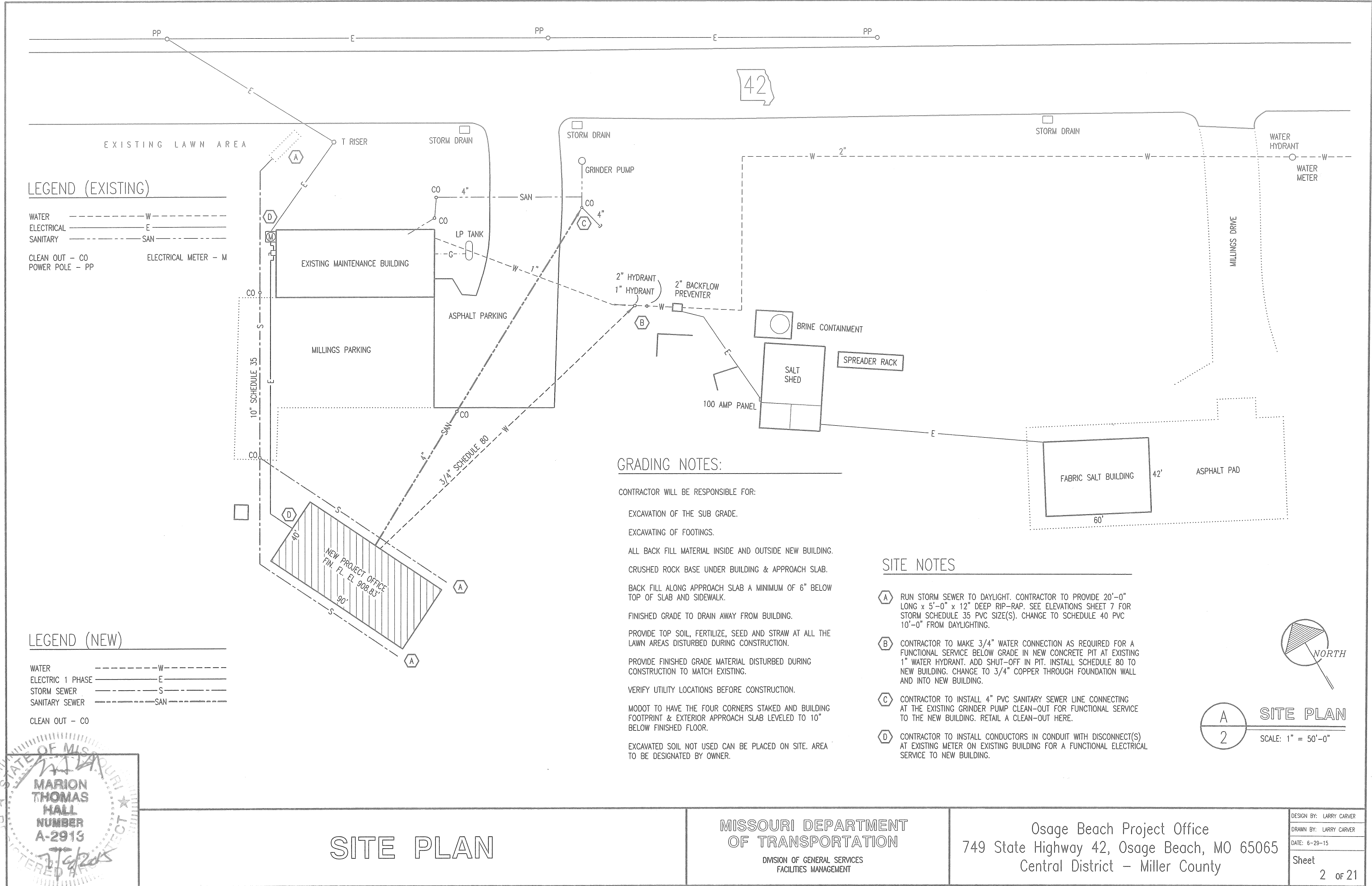
COVER SHEET

MISSOURI DEPARTMENT
OF TRANSPORTATION
DIVISION OF GENERAL SERVICES
FACILITIES MANAGEMENT

Osage Beach Project Office
749 State Highway 42, Osage Beach, MO 65065
Central District - Miller County

DESIGN BY: LARRY CARVER
DRAWN BY: LARRY CARVER
DATE: 7-2-15
Sheet
1 of 21



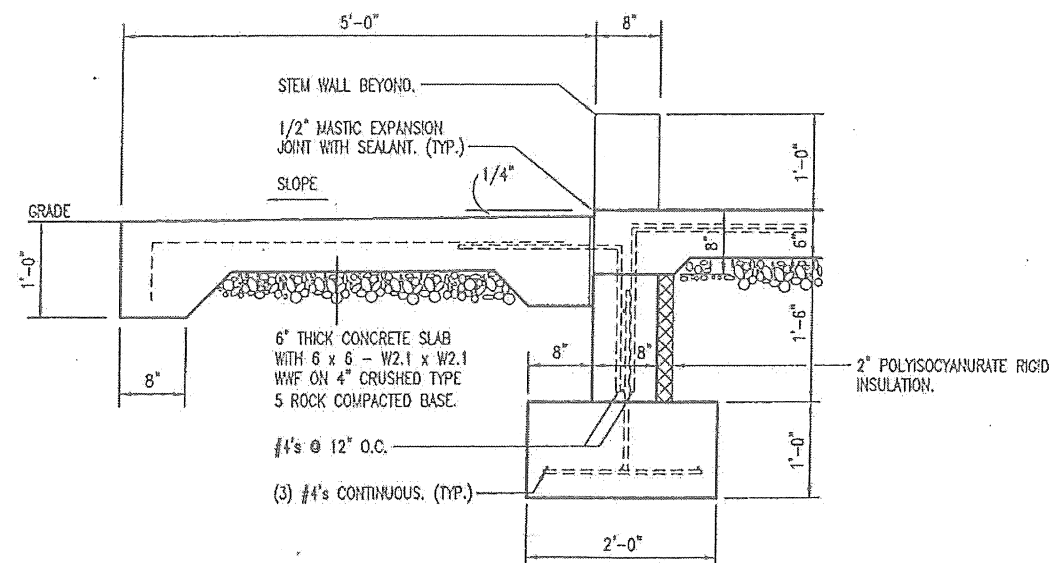
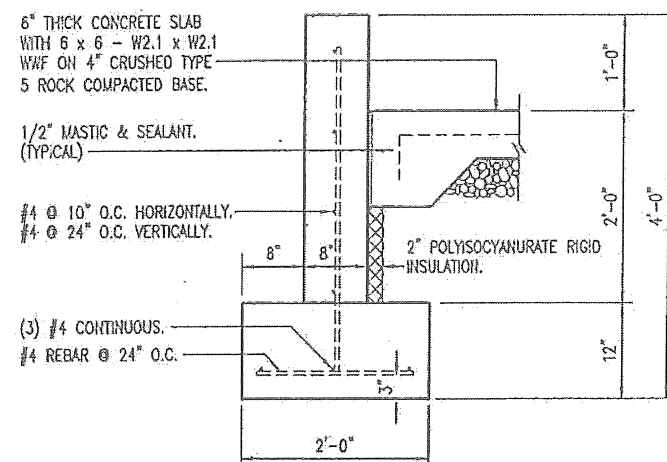
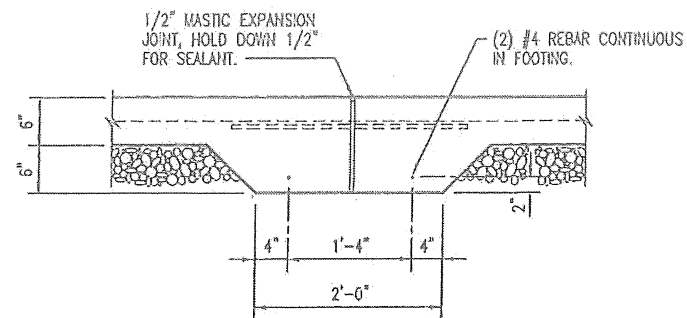
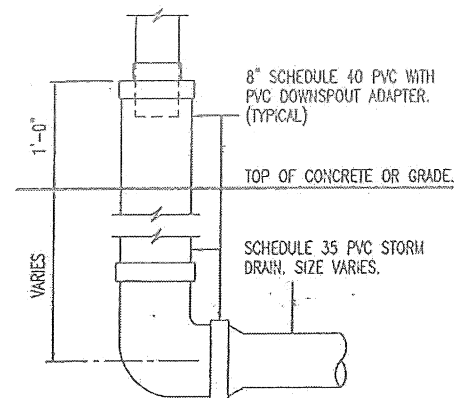


SITE PLAN

MISSOURI DEPARTMENT
OF TRANSPORTATION
DIVISION OF GENERAL SERVICES
FACILITIES MANAGEMENT

Osage Beach Project Office
749 State Highway 42, Osage Beach, MO 65065
Central District – Miller County

| |
|-------------------------|
| DESIGN BY: LARRY CARVER |
| DRAWN BY: LARRY CARVER |
| DATE: 6-29-15 |
| Sheet |
| 2 of 21 |



- ## CONCRETE NOTES

1. CONCRETE WORK SHALL BE EXECUTED IN STRICT COMPLIANCE WITH THE LATEST EDITION OF THE AMERICAN CONCRETE INSTITUTE (A.C.I.) MANUAL OF CONCRETE PRACTICE.
2. FOUNDATION DESIGN IS BASED UPON AN ASSUMED SOIL BEARING CAPACITY OF 2,000 PSF. IF WET OR UNUSUAL SOIL CONDITIONS ARE ENCOUNTERED, NOTIFY THE DESIGNER AND CONSTRUCTION INSPECTOR BEFORE PROCEEDING WITH THE WORK.
3. IF CONDITIONS REQUIRING ROCK EXCAVATION ARE ENCOUNTERED, NOTIFY THE DESIGNER AND CONSTRUCTION INSPECTOR BEFORE PROCEEDING WITH THE WORK.
4. ALL CONCRETE SHALL BE TYPE 1 CEMENT WITH A COMPRESSIVE STRENGTH OF 4,000 PSI @ 28 DAYS AND NOT TO EXCEED 4" SLUMP.
5. FOUNDATION PIERS AND FOOTINGS SHALL BEAR A MINIMUM OF 12 INCHES INTO UNDISTURBED SOIL AND 36 INCHES MINIMUM BELOW FINISH GRADE.
6. DEFORMED STEEL REINFORCING BARS SHALL BE: #4 AND LARGER ASTM A615 GRADE 60.
7. SEE SPECIFICATION SECTION 03300 CONCRETE FOR ADDITIONAL INFORMATION.
8. CONCRETE EXPOSED TO THE EXTERIOR SHALL RECEIVE AIR ENTRAINMENT 6% +/- 2%.
9. PROVIDE CORNER REINFORCING BARS WITH 12" MINIMUM LAP EQUAL IN SIZE AND GRADE TO CONNECTING BARS.
10. EXTERIOR CONCRETE FLATWORK SHALL HAVE A LIGHT BROOM FINISH.
11. COORDINATE WORK OF OTHER TRADES REQUIRED TO BE INSTALLED IN, UNDER, OR THROUGH CONCRETE PRIOR TO PLACEMENT OF CONCRETE. INSTALL ALL ANCHORAGES AND SLEEVES REQUIRED FOR THE INSTALLATION OF WORK BY OTHER TRADES.
12. ENTIRE PERIMETER OF BUILDING TO RECEIVE 2" POLYISOCYANURATE RIGID INSULATION BOARD.
13. SAWED CONTROL JOINTS SHALL BE CLEANED FREE OF ALL DEBRIS AND FILLED WITH SEALANT. SEE SECTION 07900.
14. COPPER PIPING RUN THROUGH CONCRETE WORK SHALL BE RUN THROUGH PVC SLEEVES.
15. ALL CONCRETE STEM WALLS TO MONOLITHICALLY POURED.



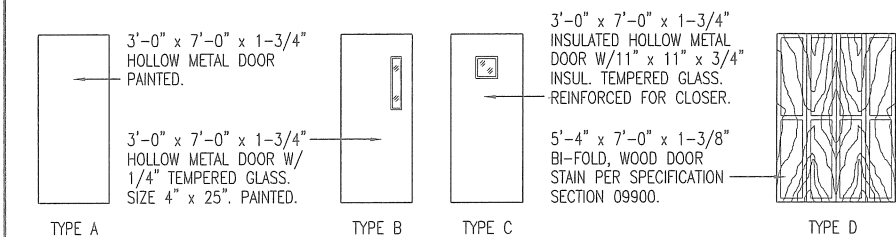
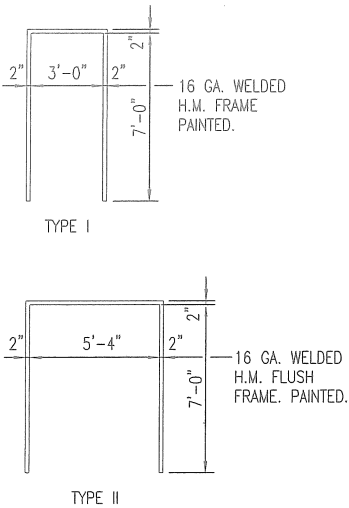
FOUNDATION DETAILS

MISSOURI DEPARTMENT
OF TRANSPORTATION
DIVISION OF GENERAL SERVICES
FACILITIES MANAGEMENT

Osage Beach Project Office
749 State Highway 42, Osage Beach, MO 65065
Central District - Miller County

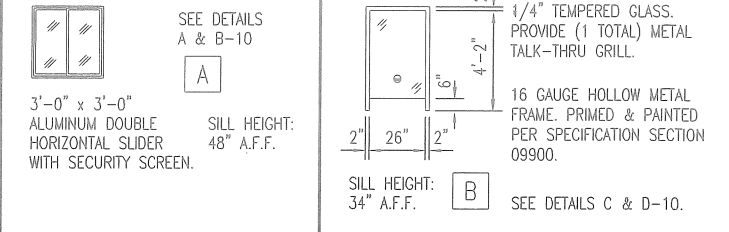
| |
|-------------------------|
| DESIGN BY: LARRY CARVER |
| DRAWN BY: LARRY CARVER |
| DATE: 6-29-15 |
| Sheet 4 of 21 |

| DOOR SCHEDULE | | | | | | | |
|---------------|----------------------------|--------|----------|-----------|--------|--------|------------|
| NO. | SIZE | SWING | DR. TYPE | FRM. TYPE | DETAIL | DEPTH | HDWR. GRP. |
| 1 | 3'-0" x 7'-0" x 1-3/4" | LHR | C | I | A-11 | 5-7/8" | 1 |
| 2 | 3'-0" x 7'-0" x 1-3/4" | LHR | B | I | E-10 | 5-7/8" | 4 |
| 3 | 3'-0" x 7'-0" x 1-3/4" | RH | A | I | E-10 | 5-7/8" | 3 |
| 4 | 3'-0" x 7'-0" x 1-3/4" | LH | B | I | E-10 | 5-7/8" | 3 |
| 5 | 3'-0" x 7'-0" x 1-3/4" | LHR | B | I | E-10 | 5-7/8" | 4 |
| 6 | (4) 1'-0" x 7'-0" x 1-3/8" | BIFOLD | D | II | F-10 | 5-7/8" | 5 |
| 7 | (4) 1'-0" x 7'-0" x 1-3/8" | BIFOLD | D | II | F-10 | 5-7/8" | 5 |
| 8 | (4) 1'-0" x 7'-0" x 1-3/8" | BIFOLD | D | II | F-10 | 5-7/8" | 5 |
| 9 | 3'-0" x 7'-0" x 1-3/4" | LHR | B | I | A-11 | 5-7/8" | 1 |
| 10 | 3'-0" x 7'-0" x 1-3/4" | LH | B | I | E-10 | 5-7/8" | 3 |
| 11 | 3'-0" x 7'-0" x 1-3/4" | RH | B | I | E-10 | 5-7/8" | 3 |
| 12 | 3'-0" x 7'-0" x 1-3/4" | RH | A | I | G-10 | 5-7/8" | 2 |
| 13 | 3'-0" x 7'-0" x 1-3/4" | RH | A | I | G-10 | 5-7/8" | 2 |
| 14 | 3'-0" x 7'-0" x 1-3/4" | LHR | B | I | A-11 | 5-7/8" | 1 |
| 15 | 3'-0" x 7'-0" x 1-3/4" | LHR | B | I | E-10 | 5-7/8" | 4 |



| FINISH SCHEDULE | | | | | | |
|-----------------|----------------|-------------|------------------------------|---|----------|--|
| NO. | ROOM | FLOOR | WALLS | BASE | CEILING | |
| | | CARPET TILE | VINYL COMPOSITION TILE (VCT) | 5/8" GYPSUM BOARD, 5/8" GREEN GYP. BD. PAINTED. | 4" VINYL | ACOUSTICAL CEILING TILE @ 8'-0" A.F.F. |
| 101 | ENTRY | | • | • | • | • |
| 102 | HALLWAY | | • | • | • | • |
| 103 | RECEPTIONIST | | • | • | • | • |
| 104 | STORAGE | | • | • | • | • |
| 105 | OFFICE | | • | • | • | • |
| 106 | CONFERENCE | • | • | • | • | • |
| 107 | BREAK ROOM | | • | • | • | • |
| 108 | MECHANICAL | | • | • | • | • |
| 109 | OFFICE | | • | • | • | • |
| 110 | OFFICE | | • | • | • | • |
| 111 | REST ROOM (RR) | | • | • | • | • |
| 112 | REST ROOM (RR) | | • | • | • | • |
| 113 | CUBICLES | | • | • | • | • |

WINDOW SCHEDULE



GENERAL NOTES:

CONTRACTOR TO FURNISH ALL NECESSARY FLASHING AND TRIM TO PROVIDE A NEAT, WEATHERPROOF FIT AT ALL DOORS, WINDOWS, CORNERS & ANY LOCATION WHERE THE METAL PANELS MAY BE CUT.

HVAC SCHEDULE

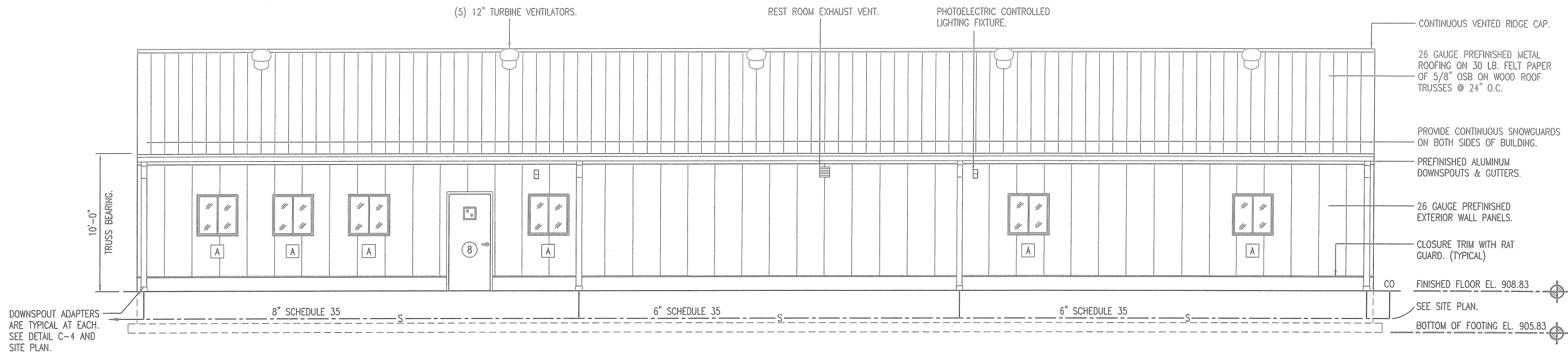
| SYM. | UNIT | MANUFACTURER | BTU OUTPUT | FUEL | VOLTAGE | REMARKS |
|------|--|-----------------------------------|------------|----------|---------|---|
| A | UP FLOW, SPLIT SYSTEM ELECTRIC AIR HANDLER | TRANE GAM2AOC060SE1SE OR EQUAL. | 60,000 | ELECTRIC | 208/230 | 5-TON, 16 SEER, 60A BREAKER. HEATER BAYEAAC10BK1BA |
| B | CONDENSING UNIT | TRANE MODEL 4TR6061C1000 OR EQUAL | 60,000 | ELECTRIC | 208/230 | 3-TON, PURON 208/1-PHASE. 16 SEER. 77 RL-LR AMPS, 30A BREAKER |
| C | THERMOSTAT TCONT802AS32DA | TRANE OR EQUAL | -- | -- | -- | 7 DAY PROGRAMMABLE. |

SCHEDULES

MISSOURI DEPARTMENT
OF TRANSPORTATION
DIVISION OF GENERAL SERVICES
FACILITIES MANAGEMENT

Osage Beach Project Office
749 State Highway 42, Osage Beach, MO 65065
Central District - Miller County

DESIGN BY: LARRY CARVER
DRAWN BY: LARRY CARVER
DATE: 6-29-15
Sheet
6 of 21



B
7
WEST ELEVATION
SCALE: 1/8" = 1'-0"



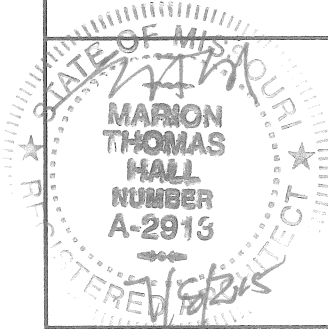
A
7
EAST ELEVATION
SCALE: 1/8" = 1'-0"

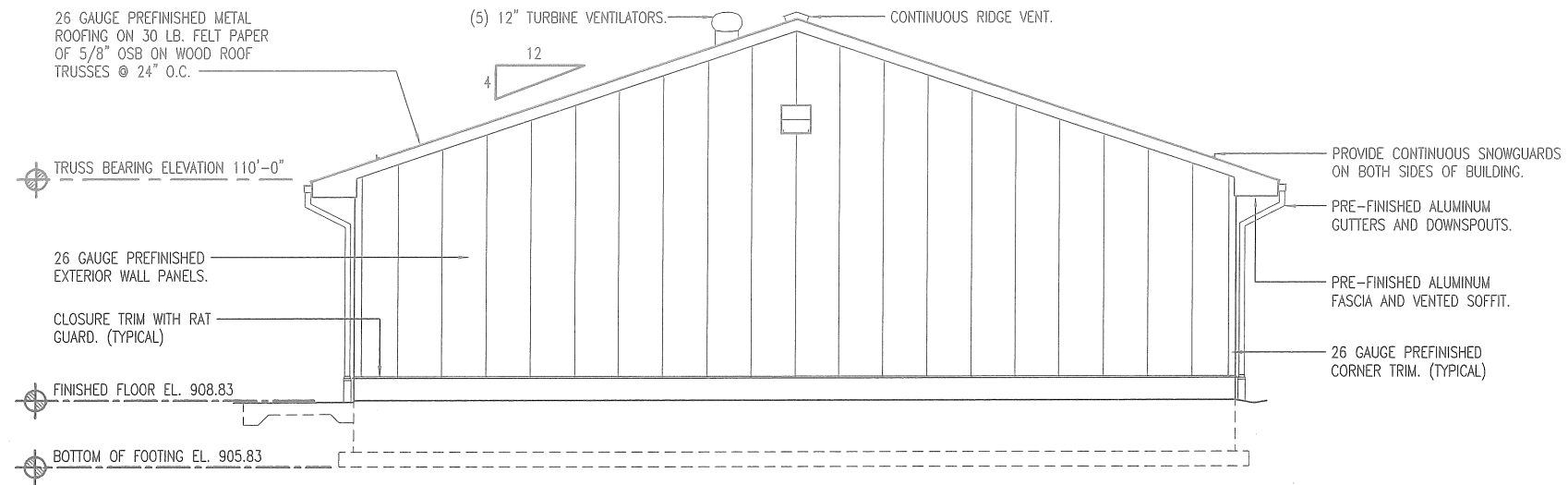
EAST & WEST ELEVATIONS

MISSOURI DEPARTMENT
OF TRANSPORTATION
DIVISION OF GENERAL SERVICES
FACILITIES MANAGEMENT

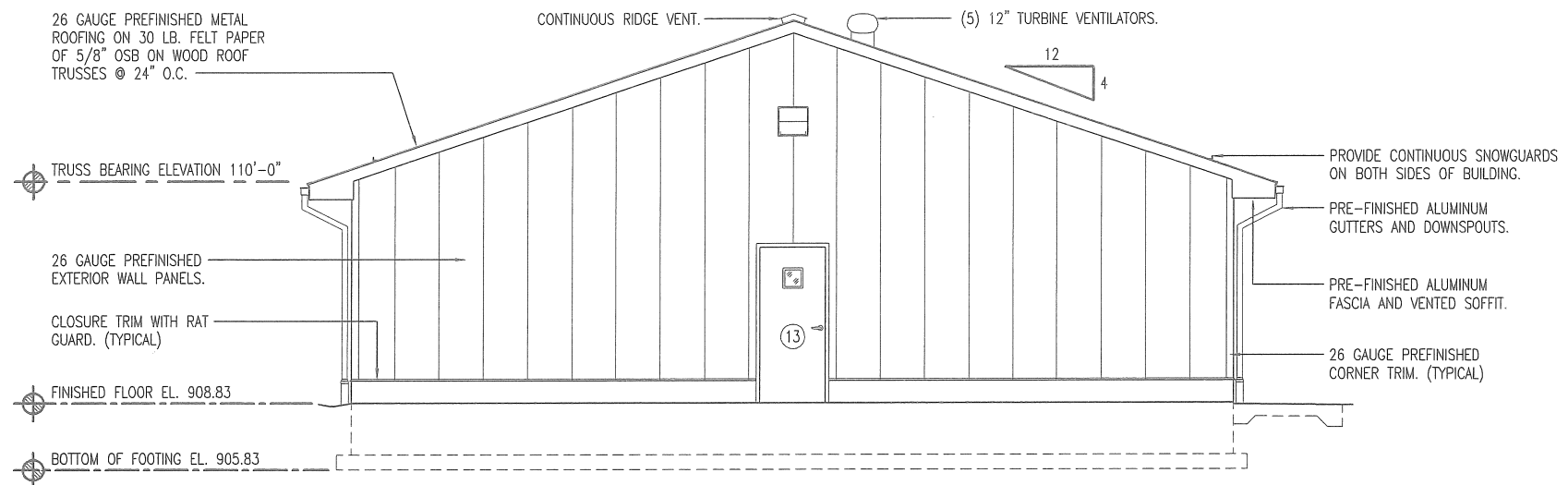
Osage Beach Project Office
749 State Highway 42, Osage Beach, MO 65065
Central District - Miller County

DESIGN BY: LARRY CARVER
DRAWN BY: LARRY CARVER
DATE: 6-29-15
Sheet
7 of 21

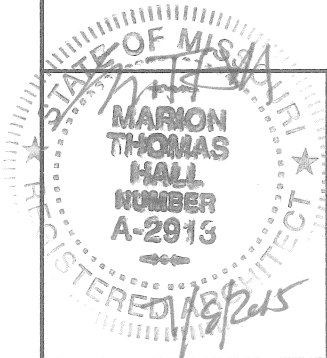




B
8
NORTH ELEVATION
SCALE: 1/8" = 1'-0"



A
8
SOUTH ELEVATION
SCALE: 1/8" = 1'-0"

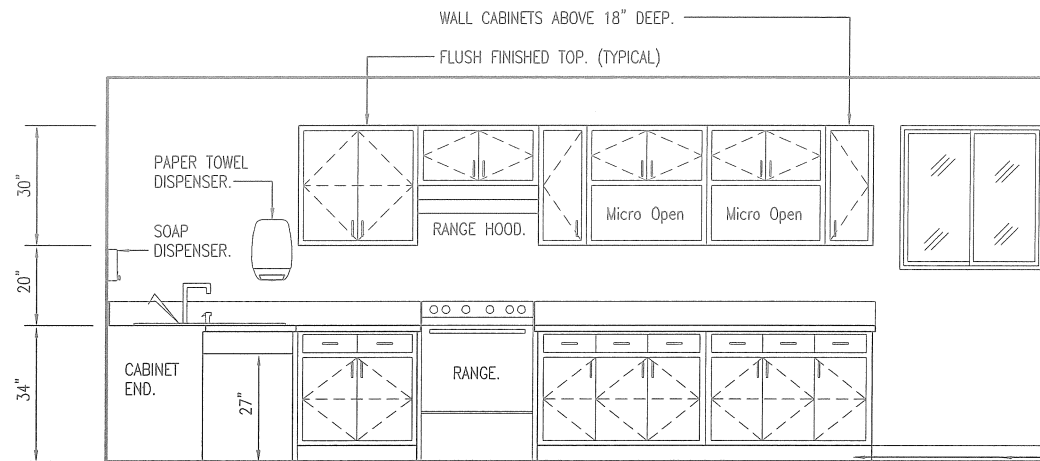


NORTH & SOUTH ELEVATIONS

MISSOURI DEPARTMENT
OF TRANSPORTATION
DIVISION OF GENERAL SERVICES
FACILITIES MANAGEMENT

Osage Beach Project Office
749 State Highway 42, Osage Beach, MO 65065
Central District – Miller County

DESIGN BY: LARRY CARVER
DRAWN BY: LARRY CARVER
DATE: 6-29-15
Sheet
8 of 21



48" SINK CORNER CABINET WITH ADA OPEN SPACE FRONT.
30" UPPER 2-DOOR
30" UPPER 2-DOOR
30" UPPER, 12" UPPER 2-DOOR 1-DOOR
30" UPPER, 12" UPPER 2-DOOR 1-DOOR
30" BASE 2-DRAWER 2-DOOR
42" BASE 3-DRAWER 3-DOOR
42" BASE 3-DRAWER 3-DOOR

PROVIDE DRAIN PIPE INSULATION KIT.
PROVIDE GARBAGE DISPOSAL. SEE PLUMBING FIXTURE SCHEDULE.

E
9
CASEWORK ELEVATION
SCALE: 1/4" = 1'-0"

CABINET CONSTRUCTION

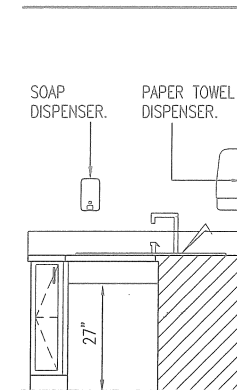
CABINETS - PLASTIC LAMINATE ON 3/4" HIGH DENSITY PARTICLE BOARD WITH WHITE MELAMINE INTERIORS, WIRE PULLS AND ADJUSTABLE SHELVES.

ALL DRAWERS TO HAVE METAL GLIDES, WIRE PULLS AND MELAMINE INTERIORS.
POST FORM COUNTER WITH THAT HAS AN INTEGRAL 4" BACKSPLASH.

GENERAL CONTRACTOR TO PROVIDE MOUNTING BLOCKING AS REQUIRED BEFORE INSTALLATION OF GYPSUM BOARD.

LOWER CABINETS ARE 24" DEEP.

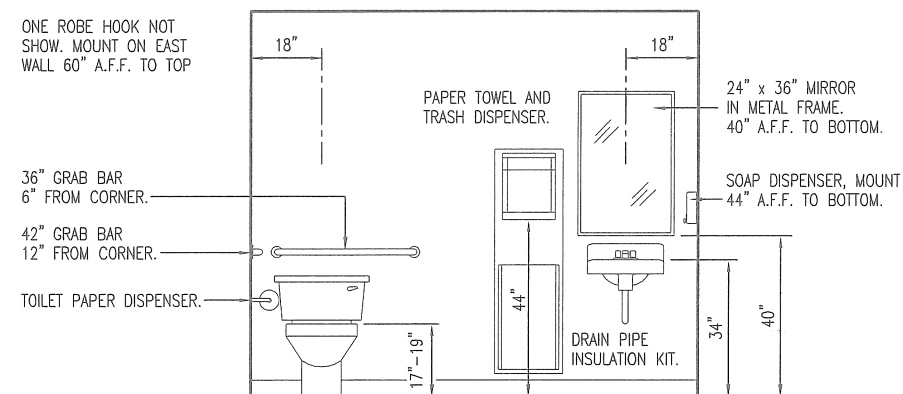
4" VINYL BASE. (TYPICAL)



8" BASE 1-DOOR
48" SINK CORNER CABINET WITH ADA OPEN SPACE FRONT.

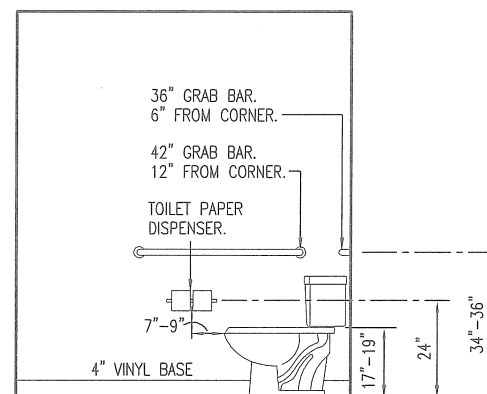
F
9
CASEWORK ELEVATION
SCALE: 1/4" = 1'-0"

ONE ROBE HOOK NOT SHOW. MOUNT ON EAST WALL 60" A.F.F. TO TOP



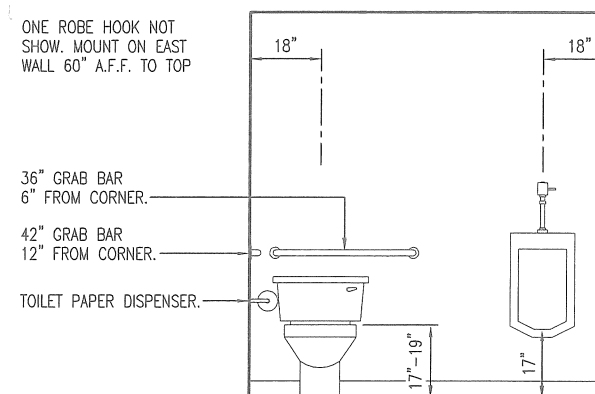
A
9
RESTROOM ELEVATION
SCALE: 1/4" = 1'-0"

PROVIDE BLOCKING FOR ALL ACCESSORIES COMPLY WITH 2010 ADA MOUNTING HEIGHTS



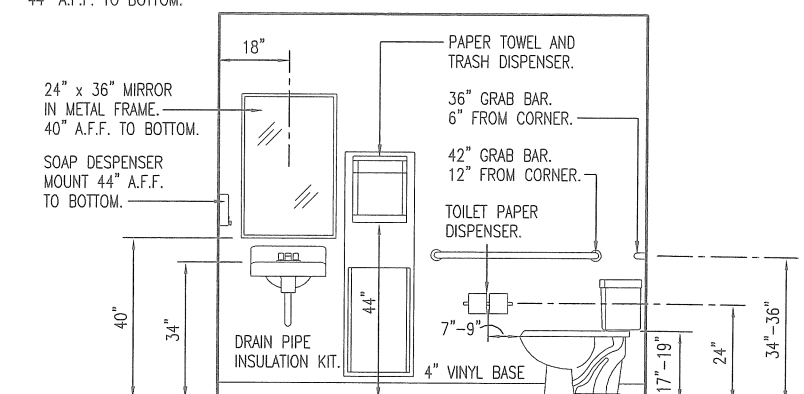
B
9
REST ROOM ELEVATION
SCALE: 1/4" = 1'-0"

ONE ROBE HOOK NOT SHOW. MOUNT ON EAST WALL 60" A.F.F. TO TOP

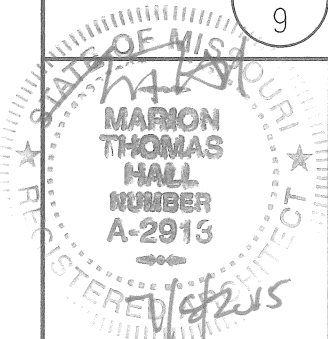


C
9
RESTROOM ELEVATION
SCALE: 1/4" = 1'-0"

SOAP DISPENSER, MOUNT 44" A.F.F. TO BOTTOM.



D
9
REST ROOM ELEVATION
SCALE: 1/4" = 1'-0"

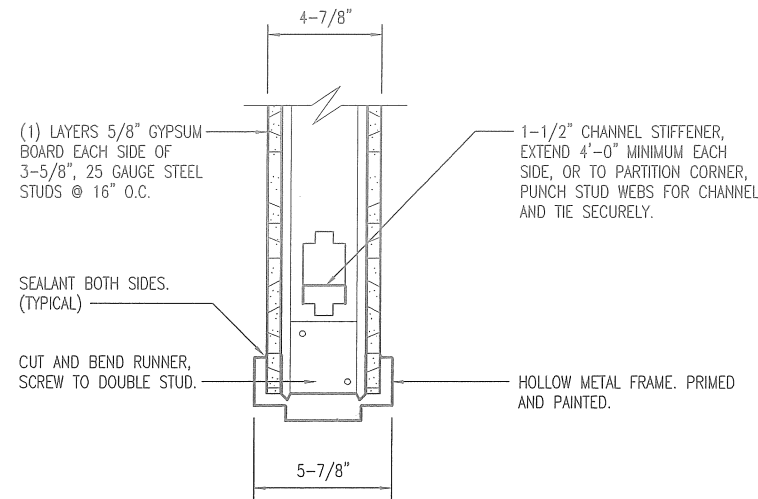


INTERIOR ELEVATIONS

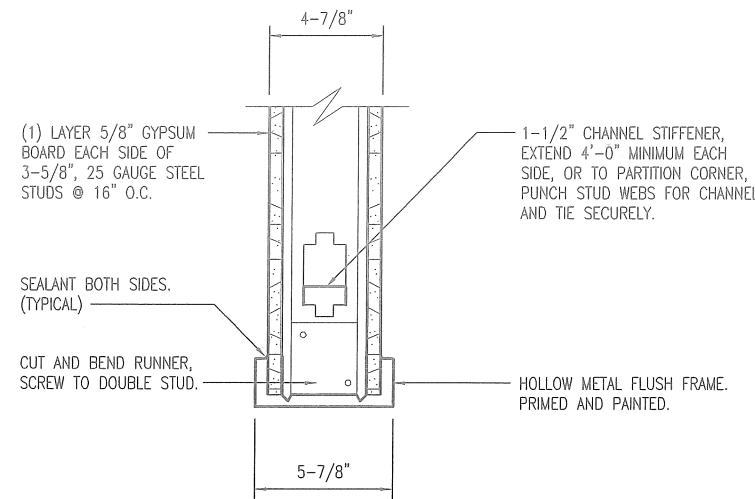
MISSOURI DEPARTMENT
OF TRANSPORTATION
DIVISION OF GENERAL SERVICES
FACILITIES MANAGEMENT

Osage Beach Project Office
749 State Highway 42, Osage Beach, MO 65065
Central District - Miller County

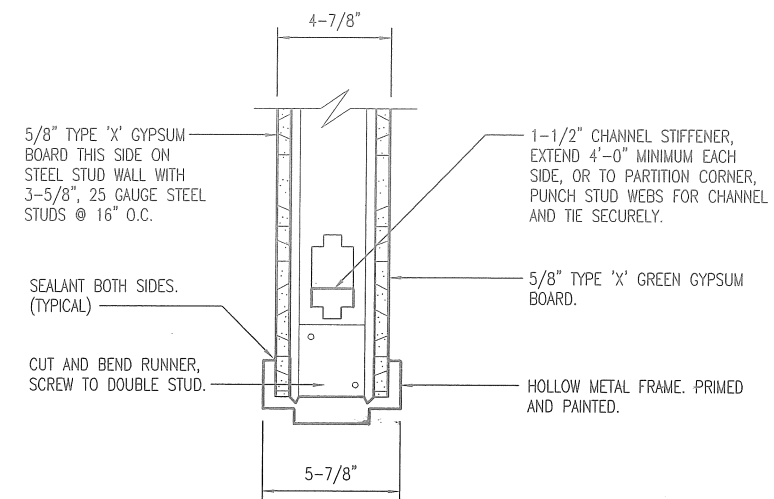
DESIGN BY: LARRY CARVER
DRAWN BY: LARRY CARVER
DATE: 6-5-15
Sheet
9 of 21



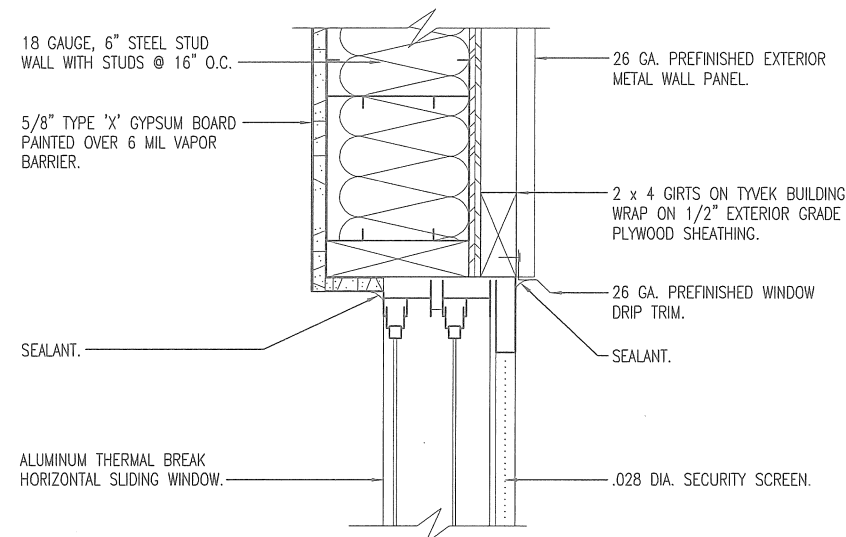
E
10
DOOR HEAD/JAMB
SCALE: 1-1/2" = 1'-0"



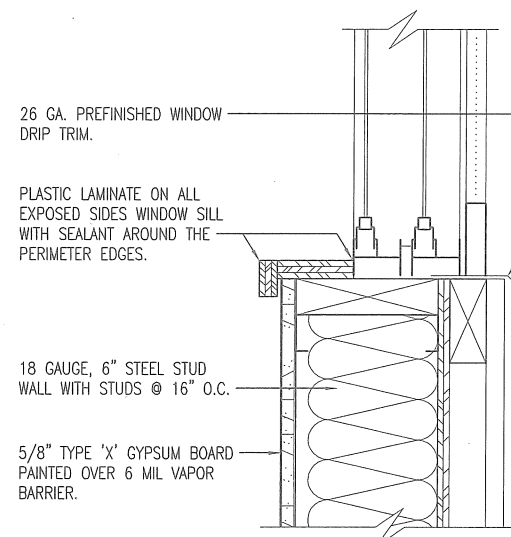
F
10
DOOR HEAD/JAMB
SCALE: 1-1/2" = 1'-0"



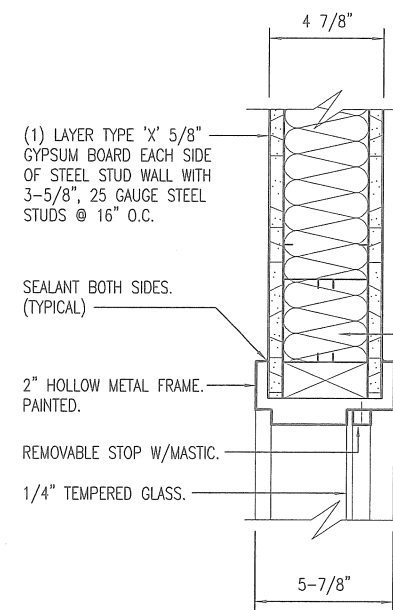
G
10
DOOR HEAD/JAMB
SCALE: 1-1/2" = 1'-0"



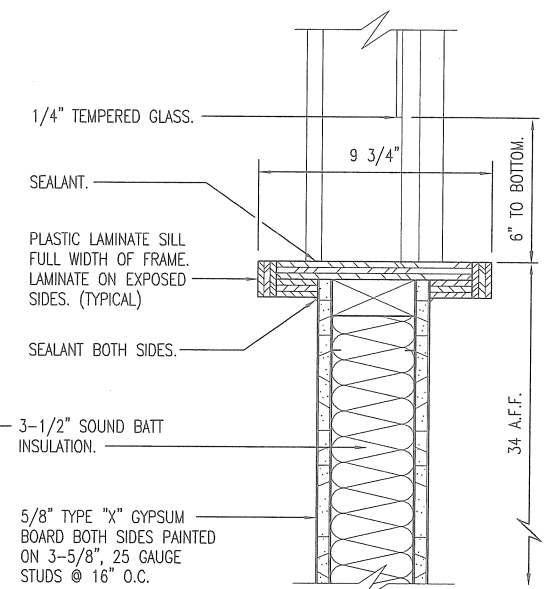
A
10
WINDOW HEAD/JAMB
SCALE: 1-1/2" = 1'-0"



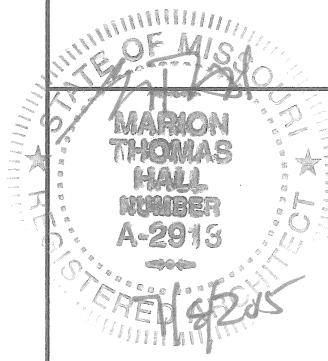
B
10
WINDOW SILL
SCALE: 1-1/2" = 1'-0"



C
10
RECEPTIONIST WINDOW WINDOW HEAD/JAMB
SCALE: 1-1/2" = 1'-0"



D
10
RECEPTIONIST WINDOW WINDOW SILL
SCALE: 1-1/2" = 1'-0"

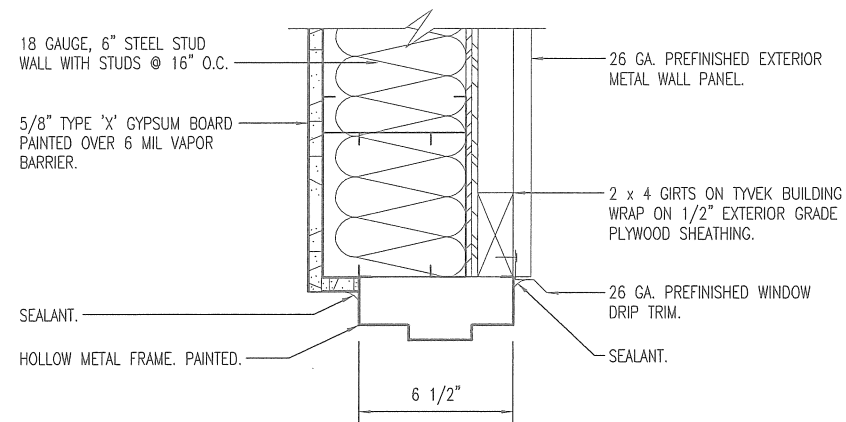


HEAD & JAMB DETAILS

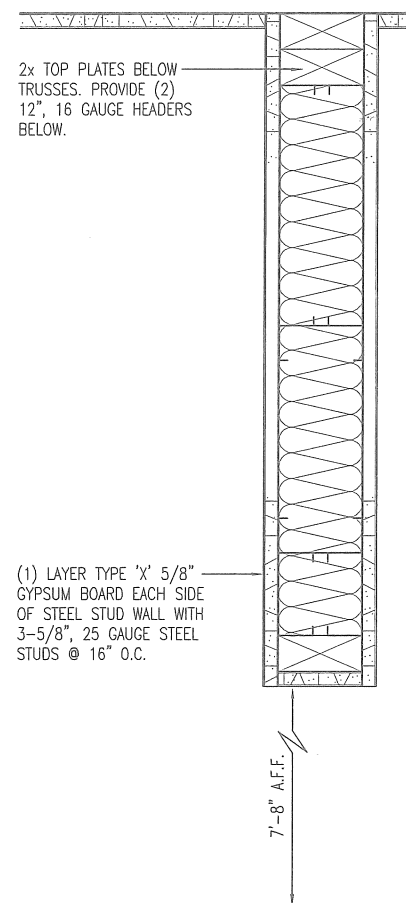
MISSOURI DEPARTMENT
OF TRANSPORTATION
DIVISION OF GENERAL SERVICES
FACILITIES MANAGEMENT

Osage Beach Project Office
749 State Highway 42, Osage Beach, MO 65065
Central District - Miller County

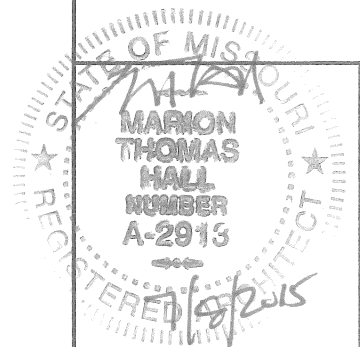
DESIGN BY: LARRY CARVER
DRAWN BY: LARRY CARVER
DATE: 5-8-15
Sheet
10 of 21



A
DOOR HEAD/JAMB
SCALE: 1-1/2" = 1'-0"



B
CEILING HEADER
SCALE: 1-1/2" = 1'-0"

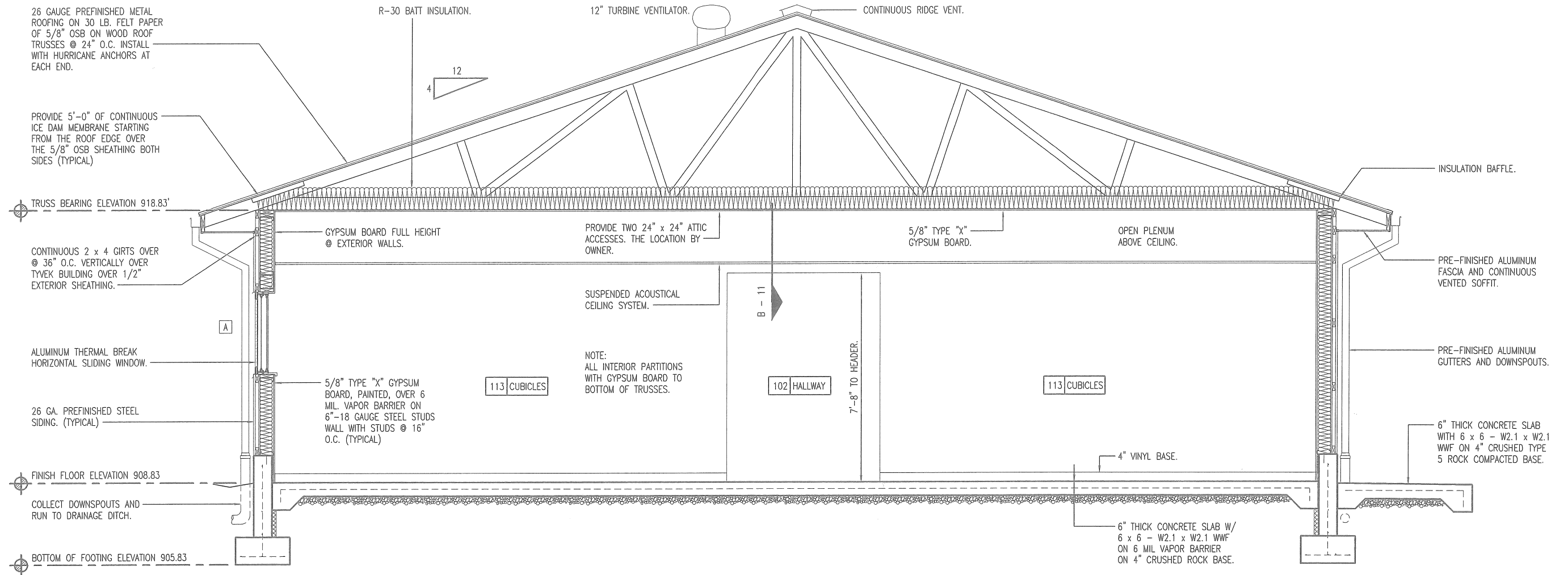


HEAD & JAMB DETAILS

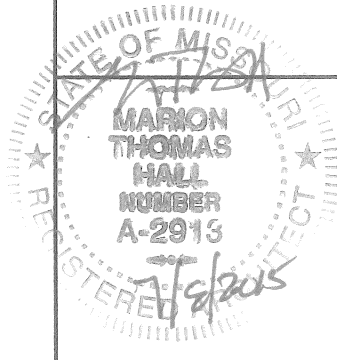
MISSOURI DEPARTMENT
OF TRANSPORTATION
DIVISION OF GENERAL SERVICES
FACILITIES MANAGEMENT

Osage Beach Project Office
749 State Highway 42, Osage Beach, MO 65065
Central District - Miller County

DESIGN BY: LARRY CARVER
DRAWN BY: LARRY CARVER
DATE: 6-5-15
Sheet
11 of 21



A
12 **BUILDING SECTION**
SCALE: 1/4" = 1'-0"

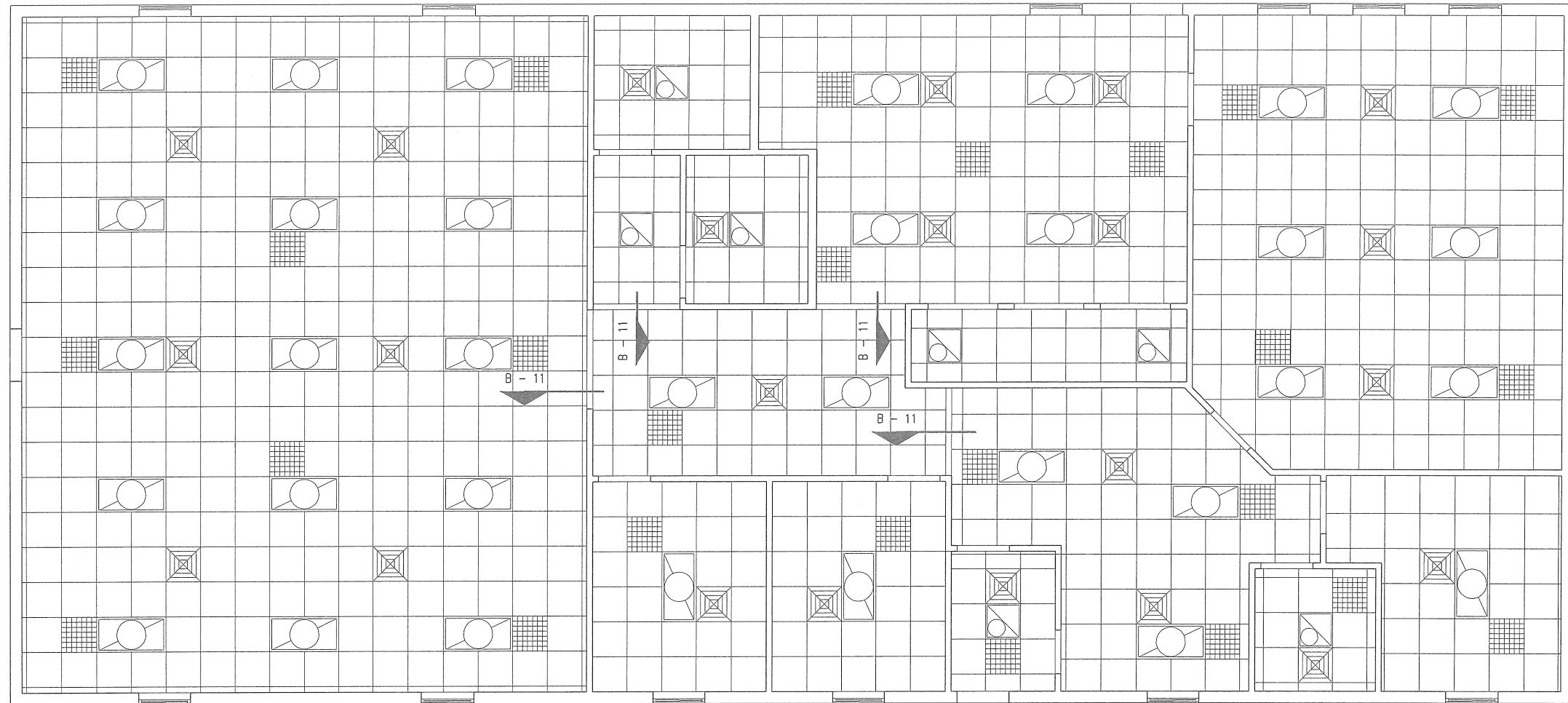


BUILDING SECTION

MISSOURI DEPARTMENT
OF TRANSPORTATION
DIVISION OF GENERAL SERVICES
FACILITIES MANAGEMENT

Osage Beach Project Office
749 State Highway 42, Osage Beach, MO 65065
Central District - Miller County

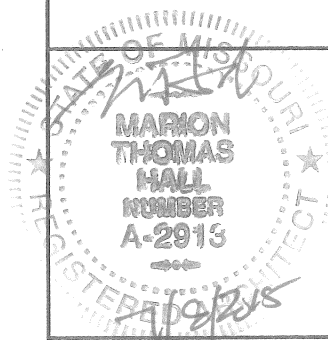
DESIGN BY: LARRY CARVER
DRAWN BY: LARRY CARVER
DATE: 6-29-15
Sheet
12 of 21



A
13

REFLECTED CEILING PLAN

SCALE: 1/8" = 1'-0"

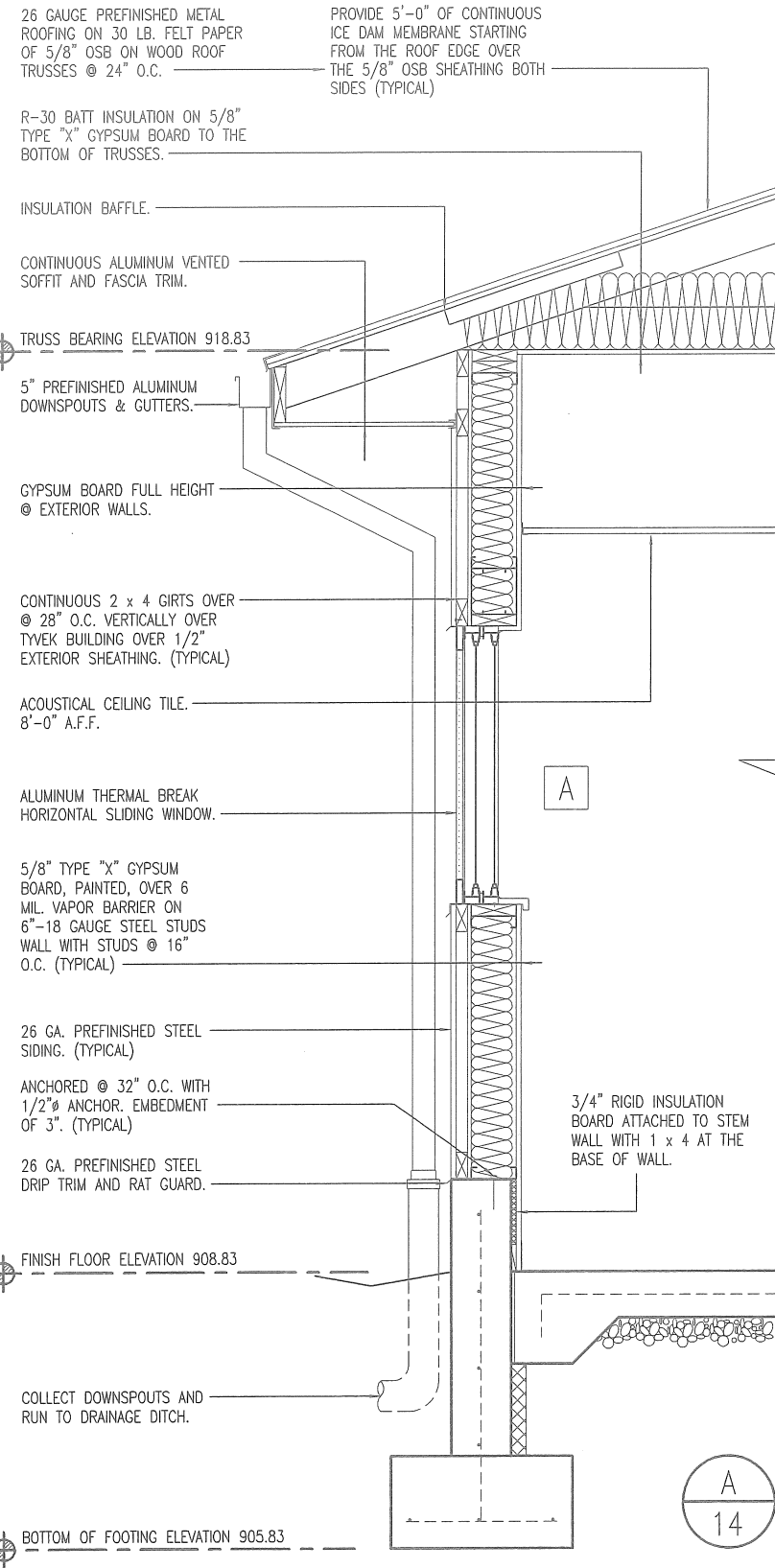


REFLECTED CEILING PLAN

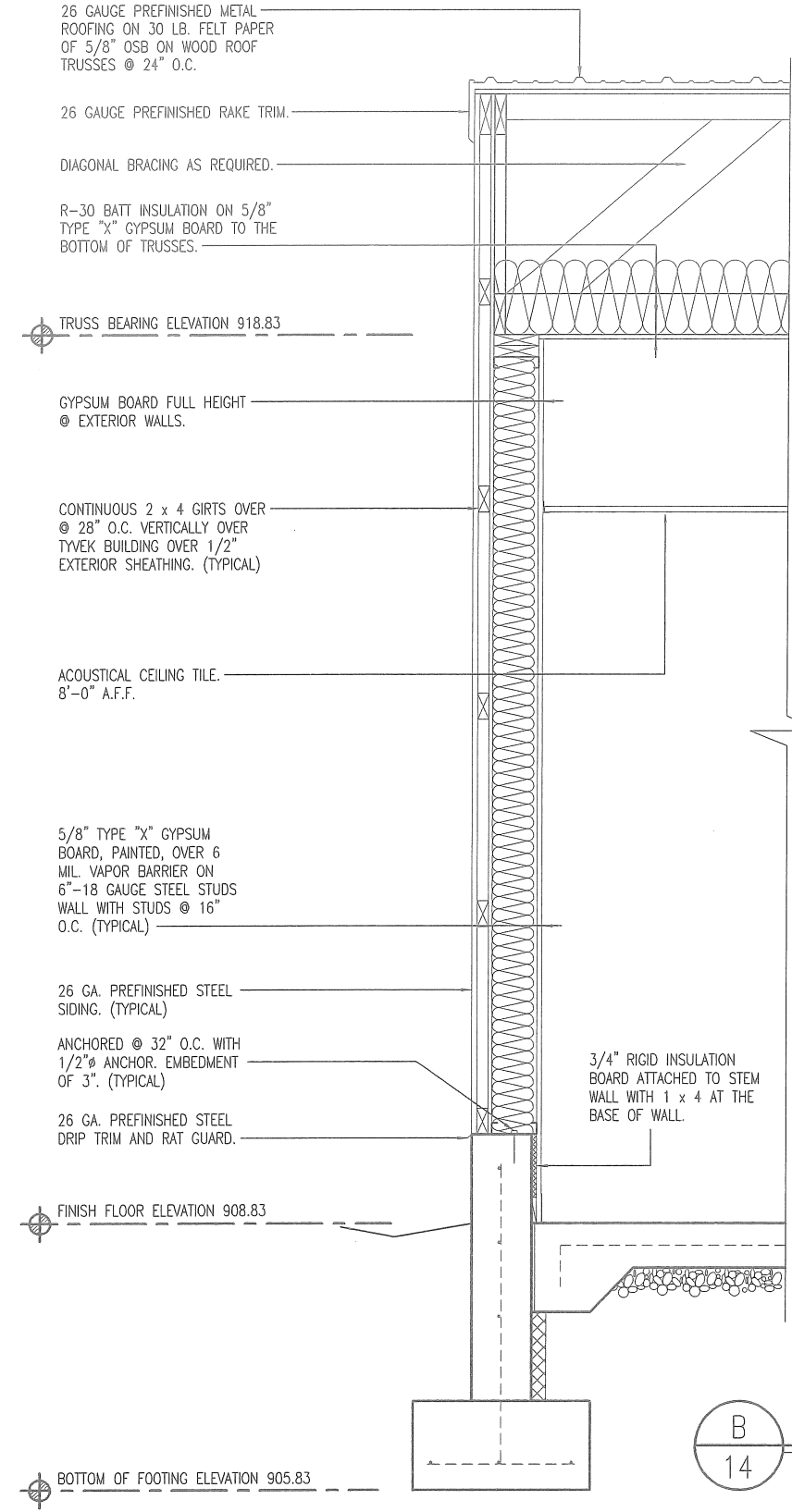
MISSOURI DEPARTMENT
OF TRANSPORTATION
DIVISION OF GENERAL SERVICES
FACILITIES MANAGEMENT

Osage Beach Project Office
749 State Highway 42, Osage Beach, MO 65065
Central District - Miller County

DESIGN BY: LARRY CARVER
DRAWN BY: LARRY CARVER
DATE: 6-29-15
Sheet
13 of 21



A
14
WALL SECTION
SCALE: 1/2" = 1'-0"



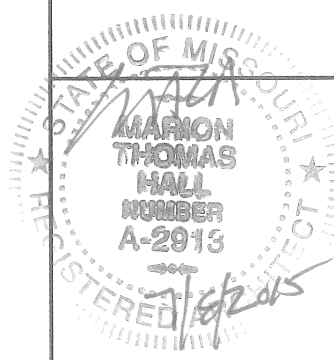
B
14
WALL SECTION
SCALE: 1/2" = 1'-0"

WALL SECTIONS

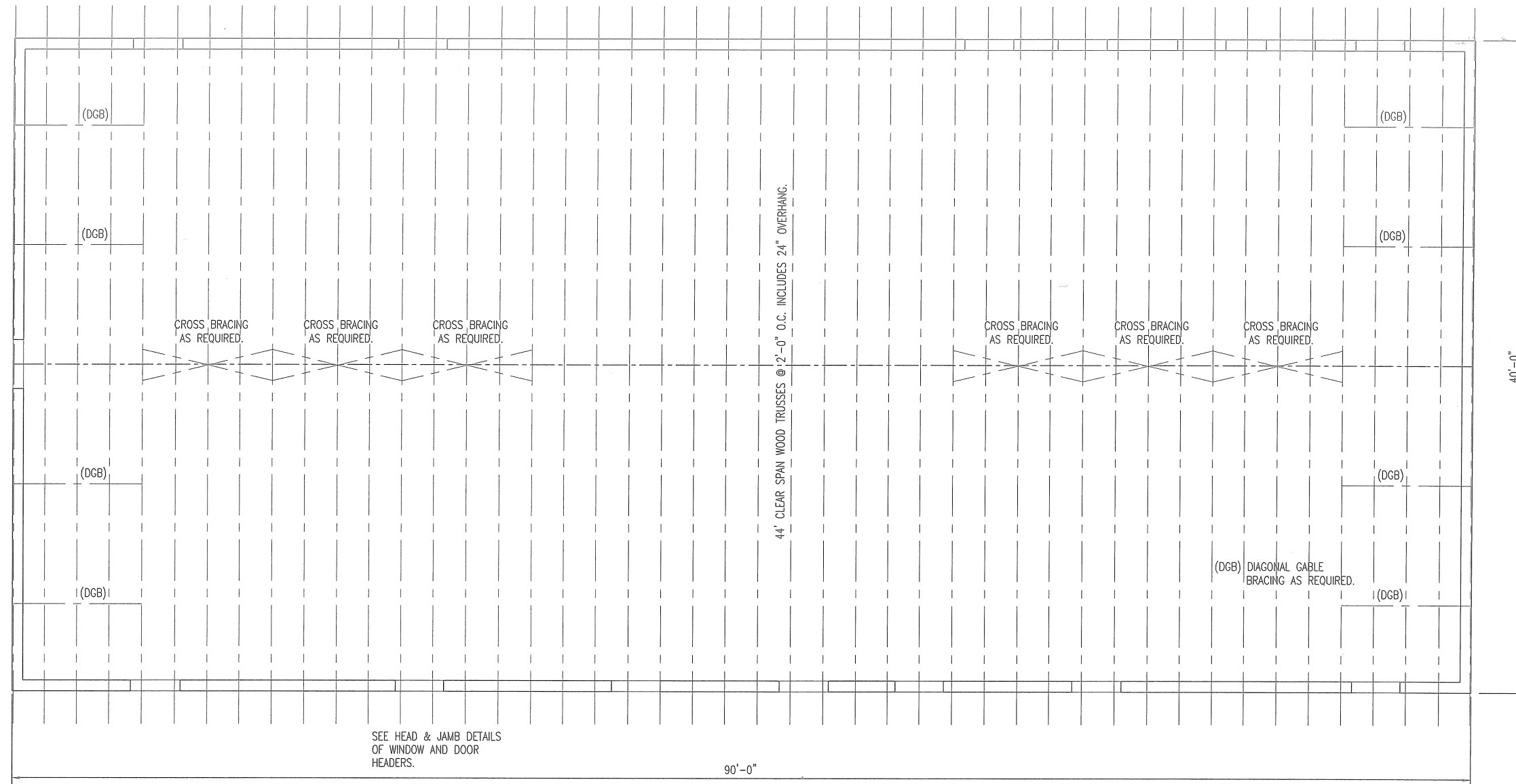
MISSOURI DEPARTMENT
OF TRANSPORTATION
DIVISION OF GENERAL SERVICES
FACILITIES MANAGEMENT

Osage Beach Project Office
749 State Highway 42, Osage Beach, MO 65065
Central District - Miller County

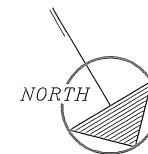
DESIGN BY: LARRY CARVER
DRAWN BY: LARRY CARVER
DATE: 6-29-15
Sheet
14 of 21



SEE HEAD & JAMB DETAILS
OF WINDOW AND DOOR
HEADERS.

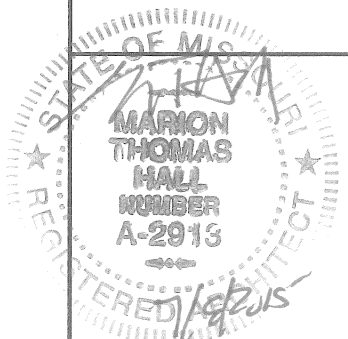


A
15 **ROOF FRAMING PLAN**
SCALE: 1/8" = 1'-0"



ROOF FRAMING NOTES

- DESIGN LOADING FOR ROOF TRUSSES SHALL MEET THE FOLLOWING CRITERIA:
 ROOF LIVE LOAD 25 PSF
 ROOF DEAD LOAD 4 PSF
 BOTTOM CORD DEAD LOAD 5 PSF
 EARTHQUAKE ZONE 1, LATEST EDITION IBC
 WIND 90 MPH, EXPOSURE B
 DEFLECTION L/360
 SPACING 24" O.C. MAXIMUM
- TRUSS DESIGN SUBMITTALS SHALL BE SEALED AND SIGNED BY A PROFESSIONAL ENGINEER LICENSED IN THE STATE OF MISSOURI.
- ROOF TRUSSES AND RAFTERS SHALL BE ANCHORED TO THE TOP PLATE OF LOAD BEARING WALLS WITH SEISMIC AND HURRICANE ANCHORS EQUAL TO SIMPSON STRONG-TIE LUS24Z ANCHORS.

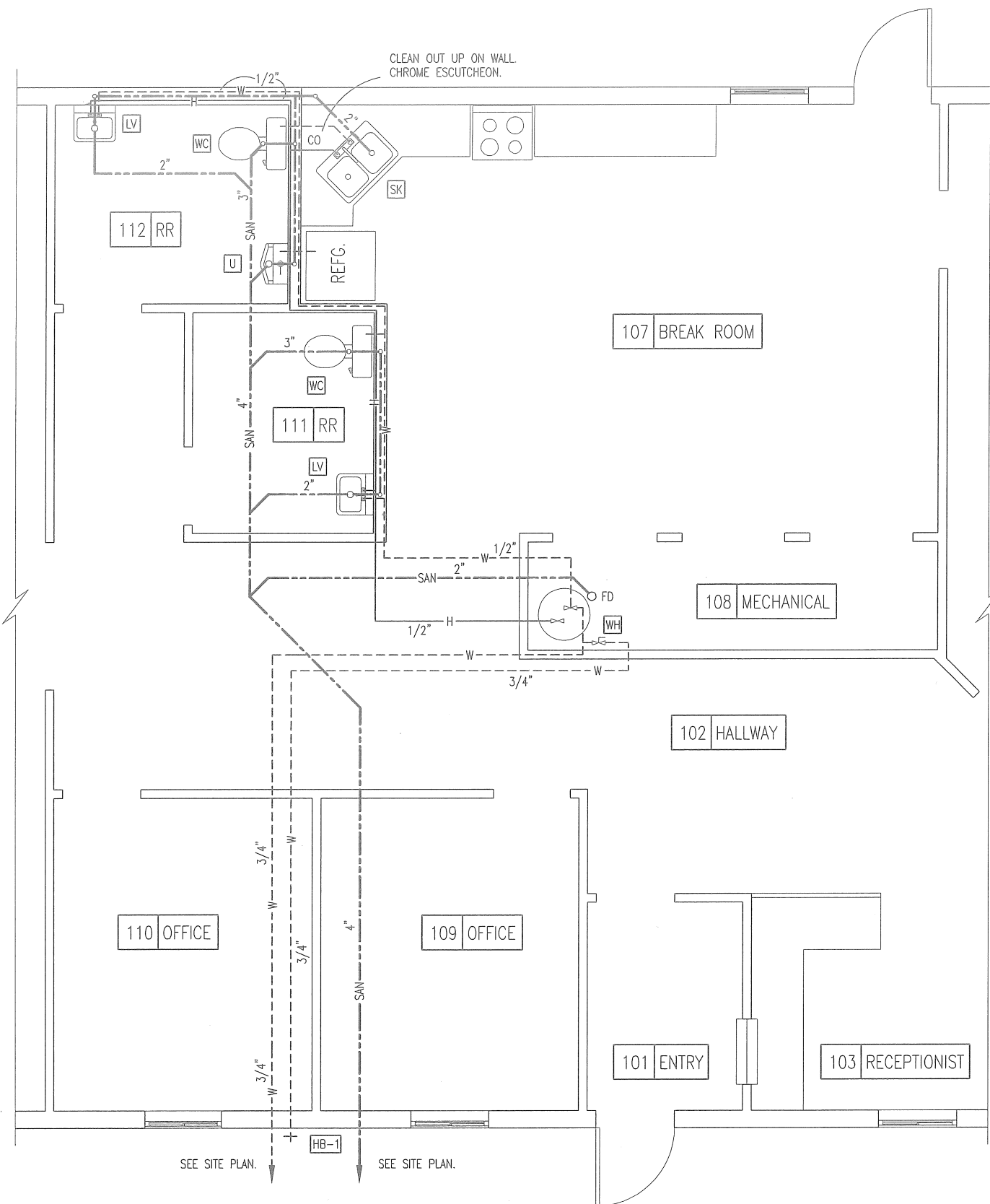


ROOF FRAMING PLAN

MISSOURI DEPARTMENT
OF TRANSPORTATION
DIVISION OF GENERAL SERVICES
FACILITIES MANAGEMENT

Osage Beach Project Office
749 State Highway 42, Osage Beach, MO 65065
Central District – Miller County

DESIGN BY: LARRY CARVER
DRAWN BY: LARRY CARVER
DATE: 5-1-15
Sheet
15 of 21



SEE SHEET 18 FOR PLUMBING SCHEDULE & NOTES.

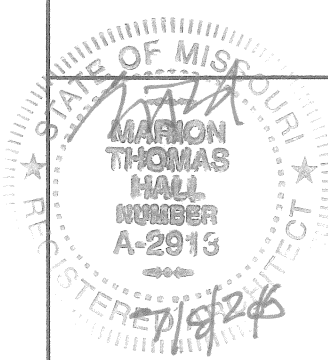
LEGEND

| | |
|----------------|----------|
| HOT WATER | — H — |
| WATER | — W — |
| SANITARY SEWER | — SAN — |
| CLEANOUT | — C.O. — |

A
16

PLUMBING PLAN

SCALE: 3/16" = 1'-0"

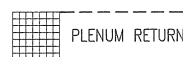
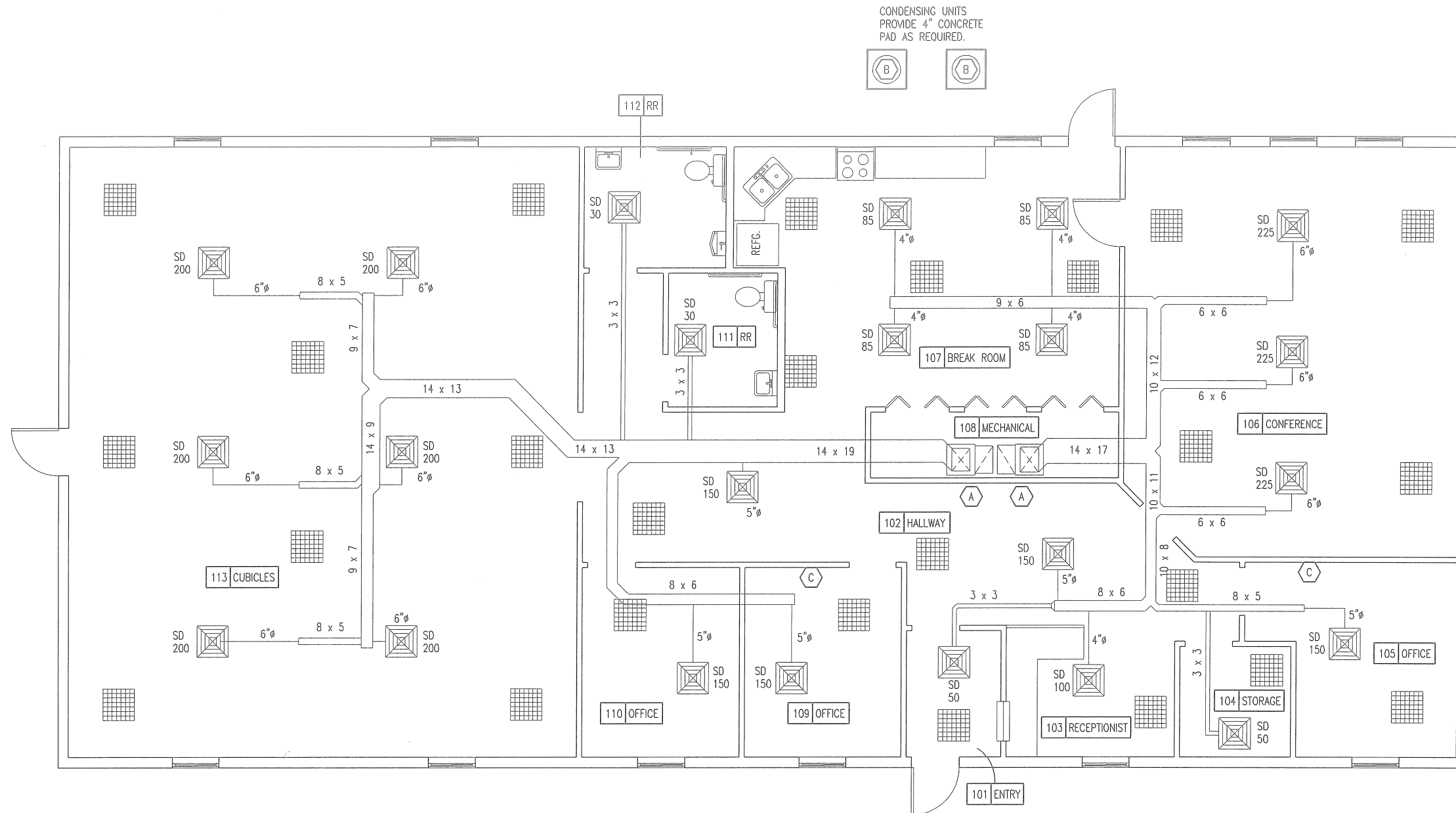


PLUMBING PLAN

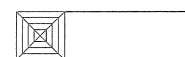
MISSOURI DEPARTMENT
OF TRANSPORTATION
DIVISION OF GENERAL SERVICES
FACILITIES MANAGEMENT

Osage Beach Project Office
749 State Highway 42, Osage Beach, MO 65065
Central District — Miller County

DESIGN BY: LARRY CARVER
DRAWN BY: LARRY CARVER
DATE: 6-29-15
Sheet
16 of 21



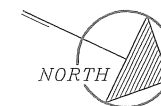
24" x 24"
RETURN GRILL
HART & COOLEY
OR EQUAL.



A
17

MECHANICAL PLAN

SCALE: 1/8" = 1'-0"



SEE SHEET 6 FOR HVAC
FIXTURE SCHEDULE.

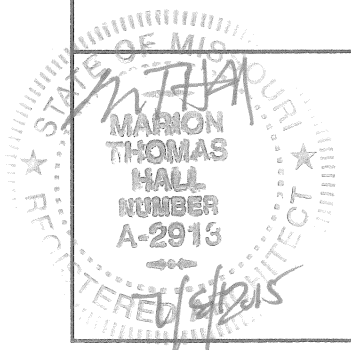
SEE SHEET 18 FOR THE
MECHANICAL NOTES.

MECHANICAL PLAN

MISSOURI DEPARTMENT
OF TRANSPORTATION
DIVISION OF GENERAL SERVICES
FACILITIES MANAGEMENT

Osage Beach Project Office
749 State Highway 42, Osage Beach, MO 65065
Central District - Miller County

DESIGN BY: LARRY CARVER
DRAWN BY: LARRY CARVER
DATE: 6-29-15
Sheet
17 of 21



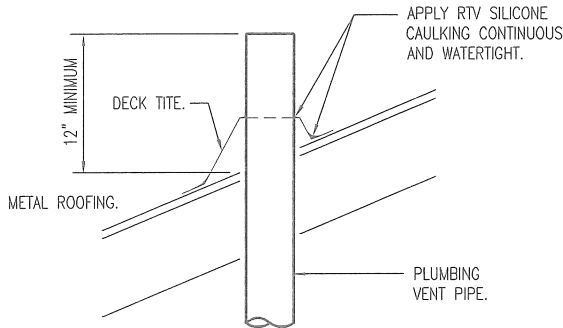
| PLUMBING SCHEDULE | | | | | | |
|-------------------|--------------|-----------------|------|--------|--------|---|
| SYM. | FIXTURE | PIPE CONNECTION | | | | REMARKS |
| | | CW | HW | S&W | VENT | |
| WC | WATER CLOSET | 1/2" | | 3" | 2" | EQUAL TO AMERICAN STANDARD #2377.100 FLOOR MOUNT. PRESSURE ASSISTED, ELONGATED WATER-SAVER "CADET" WATER CLOSET. 16-1/2" HIGH 3109.016 BOWL, 4098.100 TANK. INCLUDE OPEN FRONT SEAT WITH LID. (WHITE) |
| U | URINAL | 3/4" | | 1-1/2" | 1-1/2" | EQUAL TO AMERICAN STANDARD #6601.021 "LYNBROOK" 1.0 GALLON URINAL WITH SLOAN ROYAL 180-1 FLUSH VALVE. |
| LV | LAVATORY | 1/2" | 1/2" | 2" | 2" | EQUAL TO AMERICAN STANDARD #4867.024, 20" x 18" ENAMELED, CAST IRON "REGALYN" WALL MOUNT LAVATORY WITH 4" CENTERSET SYMMONS SYMMETRIX S-20-2-BH SINGLE LEVER LAVATORY FAUCET. INCLUDE AN ADA APPROVED INSULATION KIT. |
| WH | WATER HEATER | 3/4" | 3/4" | | | A.O. SMITH MODEL NUMBER EES-30 (2) 4500 WATT, 240 VOLT ELEMENTS, 30 GALLON ELECTRIC WITH PRESSURE RELIEF VALVE OR EQUAL. |
| HB-1 | HOSE BIBB | 3/4" | | | | EXTERIOR - EQUAL TO WOODFORD MODEL 67 FREEZELESS WALL HYDRANT WITH 3/4" H.P.T. OUTLET, INTEGRAL VACUUM BREAKER-BACK FLOW PREVENTER. (N.I.C.) |
| FD | FLOOR DRAIN | | | 2" | | PVC FLOOR DRAIN WITH P-TRAP, 6-1/2" DIA. NICKLE-BRONZE STRAINER, 2" FIP THREADED THROAT-BALL BACKWATER DEVICE. 1-1/2" PRE-INSTALLED FIP CLEAN-OUT THREADS. |
| CO | CLEAN OUT | | | | | BRASS WITH ADAPTER AND CAP EQUAL TO PIPE SIZE SHOWN. |
| SK | SINK | 1/2" | 1/2" | 2" | 2" | EQUAL TO ELKAY MODEL PSR-3321 DOUBLE BOWL SINK WITH STANDARD 4 HOLE PATTERN AND ELKAY MODEL LK-4301-F CHROME FAUCET, SPOUT, SWIVEL AERATOR AND SPRAY. PROVIDE INSINKERATOR EVOLUTION 3/4 HP, 8.1 AMP, GARBAGE DISPOSAL. |

MECHANICAL NOTES

- DRAWINGS AND DIAGRAMS ARE DIAGRAMMATIC AND SHALL NOT BE SCALED. REFER TO ARCHITECTURAL DRAWINGS FOR DIMENSIONS.
- MECHANICAL WORK SHALL BE INSTALLED IN STRICT COMPLIANCE WITH THE LATEST EDITION OF THE IBC MECHANICAL CODE.
- PROVIDE EQUIPMENT AND APPURTENANCES NOT NECESSARILY SHOWN OR SPECIFIED BUT NEEDED FOR COMPLETE AND PROPER INSTALLATION.
- ALL EQUIPMENT AND MATERIALS, IN PARTICULAR VALVES, FILTERS, MOTORS, AND CONTROLS SHALL BE ARRANGED TO PROVIDE PROPER CLEARANCE FOR SERVICE, MAINTENANCE AND INSPECTION.
- MECHANICAL SUBCONTRACTOR SHALL FULLY COORDINATE ALL WORK WITH PLUMBING AND ELECTRICAL WORKERS PRIOR TO COMMENCING OF THE MECHANICAL INSTALLATION.
- PROVIDE BLOCKING TO HVAC DEVICES AS REQUIRED FOR A SECURE APPLICATION.
- MECHANICAL CONTRACTOR TO PROVIDE ALL DEVICES REQUIRED FOR A FUNCTIONAL SYSTEM.
- BOTH AIR HANDLERS TO HAVE BUILT-IN HUMIDIFIER AND ELECTRONIC AIR FILTERS. WATER TO HUMIDIFIERS AS REQUIRED. DRAINAGE TO THE 108 MECHANICAL FLOOR DRAIN IN PVC AS REQUIRED.

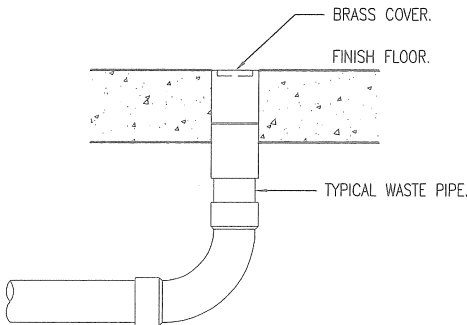
PLUMBING NOTES

- DRAWINGS AND DIAGRAMS ARE DIAGRAMMATIC AND SHALL NOT BE SCALED. REFER TO ARCHITECTURAL DRAWINGS FOR DIMENSIONS.
- PLUMBING SHALL BE INSTALLED IN STRICT COMPLIANCE WITH THE LATEST EDITION OF THE INTERNATIONAL PLUMBING CODE.
- PLUMBING SHALL BE LOCATED AND PLACED UNDER THE SLAB PRIOR TO POURING OF CONCRETE. PIPING SHALL BE RUN IN SAND FILLED TRENCH UNDER THE BASE ROCK AND SLEEVED WITH PVC WHENEVER RUN THROUGH CONCRETE.
- PROVIDE PLUMBING EQUIPMENT AND ACCESSORIES REQUIRED FOR COMPLETE AND OPERATIONAL PLUMBING SYSTEMS AS REQUIRED BY MANUFACTURER'S INSTRUCTIONS AND DIRECTIONS FOR SYSTEMS SPECIFIED.
- PLUMBING VENTS ARE NOT SHOWN ON THE PLANS. ALL FIXTURES SHALL BE PROPERLY VENTED AS PER IBC PLUMBING CODE.
- ROOF VENTS SHALL BE COMBINED WHEREVER IN COMPLIANCE WITH THE NATIONAL PLUMBING CODE TO MINIMIZE ROOF PENETRATIONS.
- PROVIDE SHUT OFF VALVES AT EACH FIXTURE.
- PROVIDE SHOCK ABSORBERS AS REQUIRED AT EACH FAUCET.
- SEE MECHANICAL PLAN FOR GAS PIPING AND MECHANICAL REQUIREMENTS.
- CONTRACTOR TO PROVIDE CAST IRON VENT PIPING IN PLENUM AS REQUIRED BY CODE. SECURE AS REQUIRED.
- EXTERIOR BELOW GROUND WATER DISTRIBUTION PIPING SHALL RUN A MINIMUM OF 36" BELOW FINISH GRADE.
- PROVIDE BLOCKING TO ALL FIXTURES AS REQUIRED FOR A SECURE APPLICATION.
- PROVIDE 3/8" COPPER WATER LINE TO REFRIGERATOR WITH SHUT-OFF AS REQ'D. FOR THE REFRIGERATOR'S ICE MAKER. SHUT-OFF TO BE INSIDE WALL COVERED BY KARP BRAND 8" x 8" HANDI-ACCESS PLASTIC ACCESS PANEL. WATER LINE TO BE THROUGH FINISHED WALL WITH CHROME ESCUTCHEON.



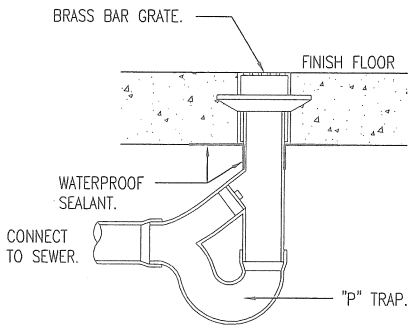
VENT THROUGH ROOF DETAIL

SCALE: NONE



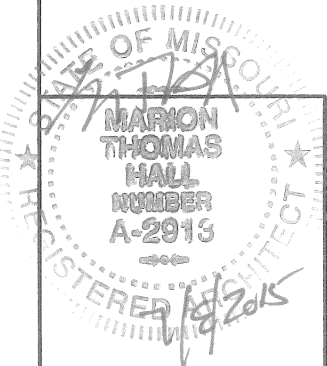
FLOOR CLEANOUT DETAIL

SCALE: NONE



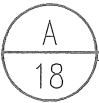
FLOOR DRAIN DETAIL

SCALE: NONE



Plumbing & Mechanical Notes

MISSOURI DEPARTMENT
OF TRANSPORTATION
DIVISION OF GENERAL SERVICES
FACILITIES MANAGEMENT



PLUMBING & MECHANICAL NOTES

SCALE: NONE

Osage Beach Project Office
749 State Highway 42, Osage Beach, MO 65065
Central District – Miller County

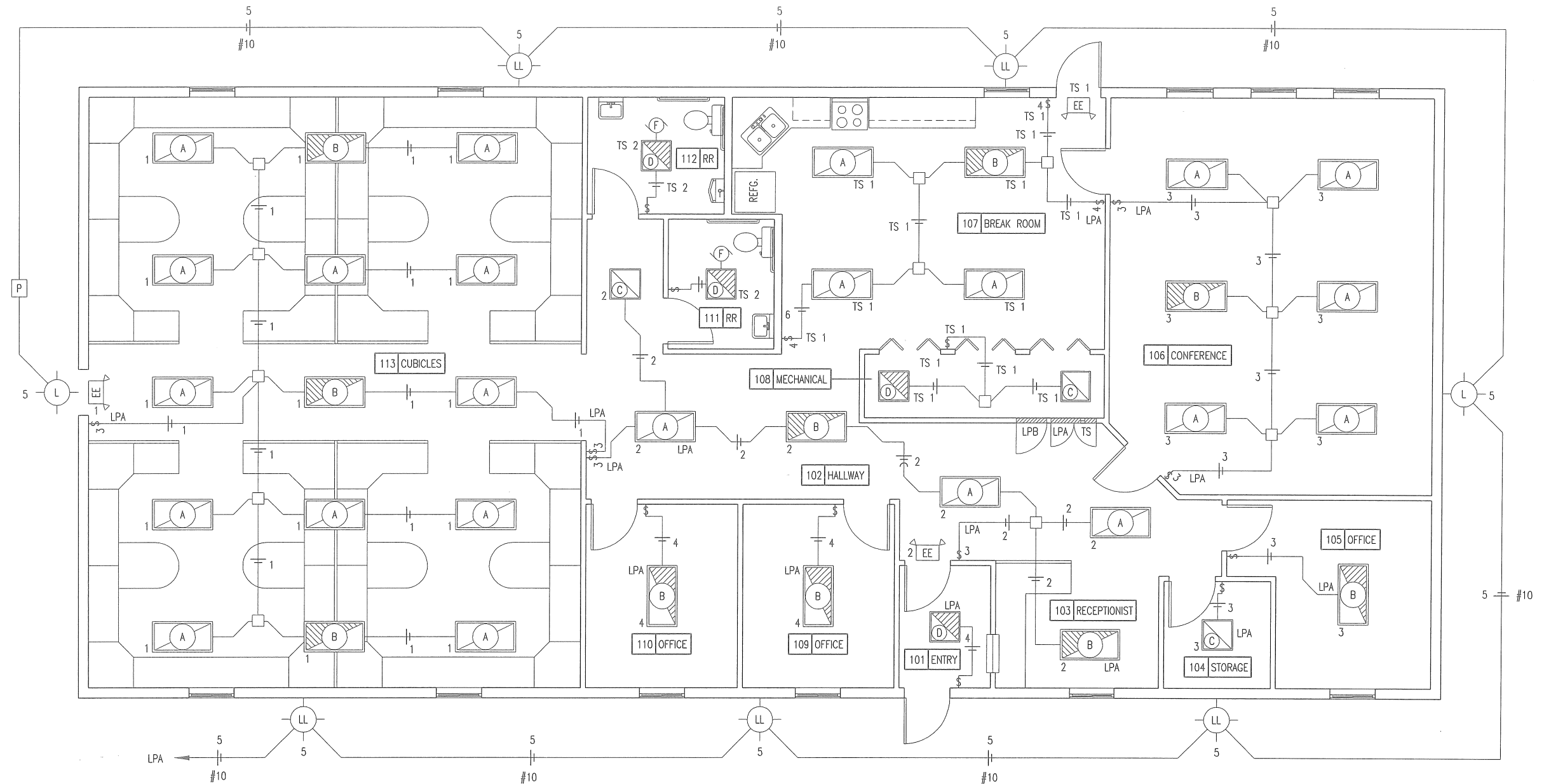
| |
|-------------------------|
| DESIGN BY: LARRY CARVER |
| DRAWN BY: LARRY CARVER |
| DATE: 6-29-15 |
| Sheet |
| 18 of 21 |

LEGEND

- \$ SINGLE POLE SWITCH, FLUSH MOUNTED IN FINISHED AREAS @ 48" A.F.F.
- \$3 3-WAY SWITCH, FLUSH MOUNTED IN FINISHED AREAS @ 48" A.F.F.,
- \$4 4-WAY SWITCH, FLUSH MOUNTED IN FINISHED AREAS @ 48" A.F.F.,
- ⊕ QUAD-PLEX RECEPTACLE FLUSH MOUNTED IN FINISHED AREAS @ 42" A.F.F. TO BOTTOM OF OUTLET.
- ⊕ DUPLEX RECEPTACLE FLUSH MOUNTED IN FINISHED AREAS @ 18" A.F.F. TO BOTTOM OF OUTLET.

- ⊕ DEDICATED RECEPTACLE FLUSH MOUNTED IN FINISHED AREAS @ 18" A.F.F. TO BOTTOM OF OUTLET.
- ⊕ GFI DUPLEX RECEPTACLE WITH GROUND FAULT INTERRUPTER.
- ⊕ VOICE AND DATA OUTLET FLUSH MOUNTED IN FINISHED AREAS @ 18" A.F.F. TO BOTTOM OF OUTLET.
- ⊕ NO FUSED DISCONNECT SWITCH.
- ⊕ JUNCTION BOX, SIZE FOR WIRE, FILL ACCORDING TO ARTICLE 314-16 OF THE N.E.C.

- ⊕ 240 OUTLET FOR STOVE. CONDUCTORS IN CONDUIT AS REQUIRED. MOUNT AS REQUIRED.
- #12 COPPER NEUTRAL CONDUCTOR UNLESS NOTED.
- #12 COPPER PHASE CONDUCTORS UNLESS NOTED.
- 1/2" EMT UNLESS NOTED.
- #12 COPPER GROUNDING CONDUCTOR UNLESS NOTED.



A
19
LIGHTING PLAN
SCALE: 1/8" = 1'-0"



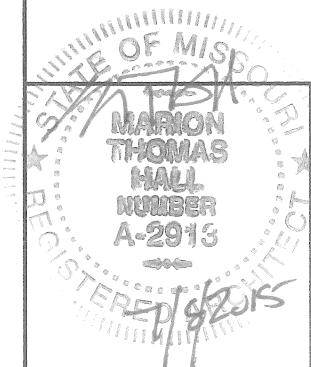
SEE ELECTRICAL SCHEDULE
& NOTES SHEET 21.

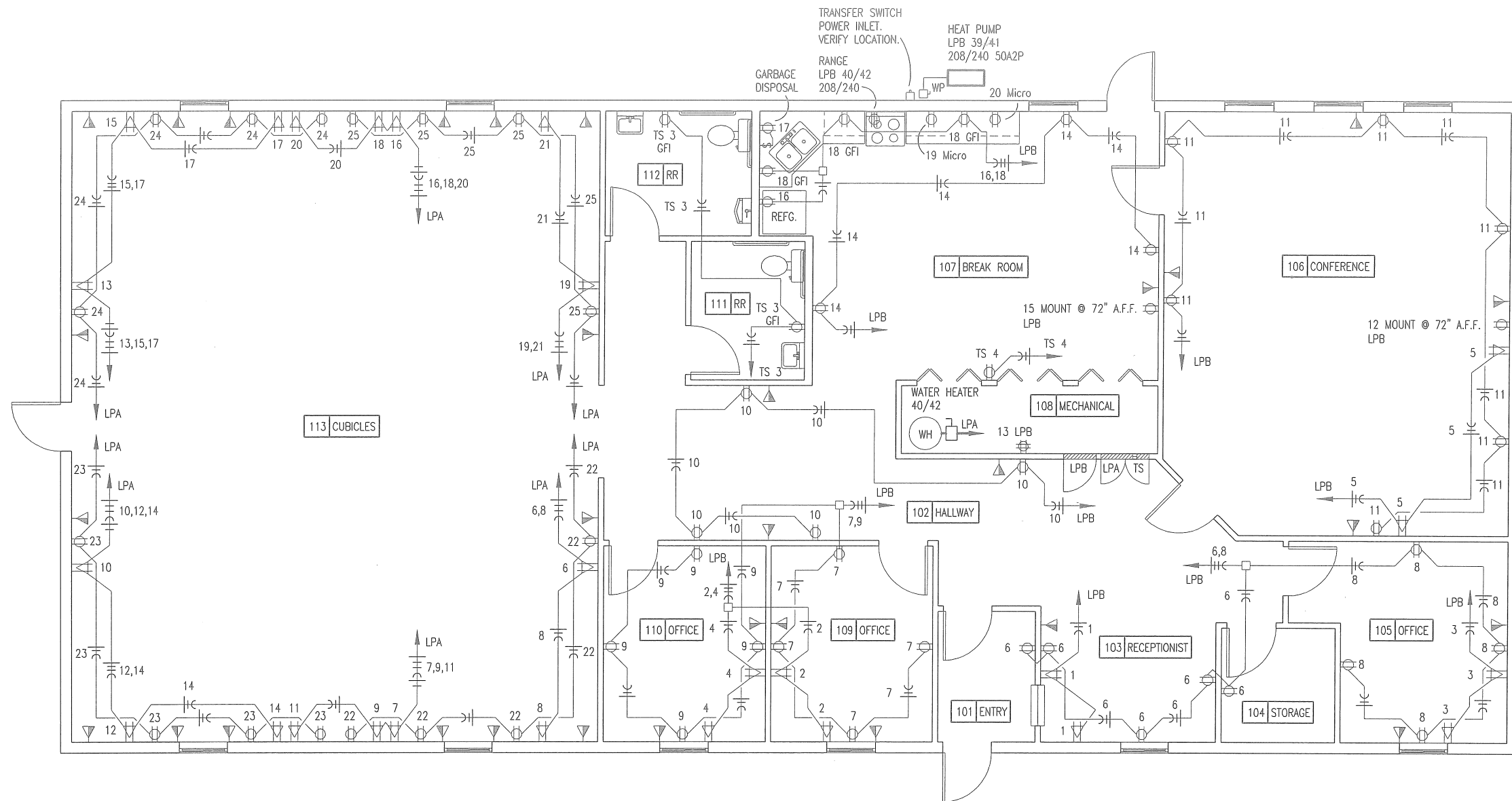
LIGHTING PLAN

MISSOURI DEPARTMENT
OF TRANSPORTATION
DIVISION OF GENERAL SERVICES
FACILITIES MANAGEMENT

Osage Beach Project Office
749 State Highway 42, Osage Beach, MO 65065
Central District - Miller County

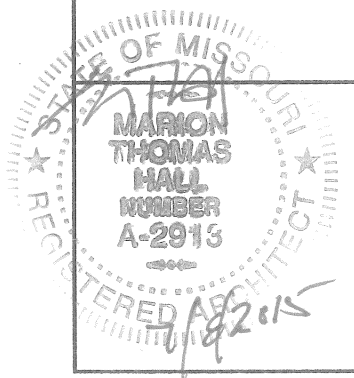
DESIGN BY: LARRY CARVER
DRAWN BY: LARRY CARVER
DATE: 6-26-15
Sheet
19 of 21





SEE ELECTRICAL SCHEDULE
& NOTES SHEET 21.

A
20
POWER PLAN
SCALE: 1/8" = 1'-0"



POWER PLAN

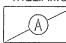



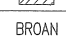


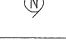
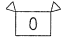

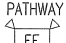
MISSOURI DEPARTMENT
OF TRANSPORTATION
DIVISION OF GENERAL SERVICES
FACILITIES MANAGEMENT

Osage Beach Project Office
749 State Highway 42, Osage Beach, MO 65065
Central District - Miller County

DESIGN BY: LARRY CARVER
DRAWN BY: LARRY CARVER
DATE: 6-29-15
Sheet
20 of 21

| SERVICE PANEL LPA | | | | | | | | | |
|--|----------------------------|-----|--|---|-------|--|----------------------------|--|-----|
| MAIN BUS: 225A MLO VOLTS: 240/120, 1PH, 3-WIRE BUS MATERIAL: COPPER MOUNTING: SURFACE | | | SQUARE "D" NOOD OR EQUAL W/ NEUTRAL BUS & GROUNDING BUS CIRCUIT BREAKERS BOLT-IN 10000 AIC | | | CONNECTED LOAD A PHASE 7123 VA B PHASE 6424 VA TOTAL 13547 VA 56 A | | | |
| CIR | SERVICE | VA | BKR | | BKR | VA | SERVICE | | CIR |
| 1 | LIGHTS - 113 | 766 | 20A1P | A | 20A1P | 281 | LIGHTS - 103 | | 2 |
| 3 | LIGHTS - 105 105 & 106 | 382 | 20A1P | B | 20A1P | 127 | LIGHTS - 101, 109 & 110 | | 4 |
| 5 | EXTERIOR LIGHTS | 161 | 20A1P | A | 20A1P | 180 | DEDICATED RECEPTACLE | | 6 |
| 7 | 113 - DEDICATED RECEPTACLE | 180 | 20A1P | B | 20A1P | 180 | 113 - DEDICATED RECEPTACLE | | 8 |
| 9 | 113 - DEDICATED RECEPTACLE | 180 | 20A1P | A | 20A1P | 180 | 113 - DEDICATED RECEPTACLE | | 10 |
| 11 | 113 - DEDICATED RECEPTACLE | 180 | 20A1P | B | 20A1P | 180 | 113 - DEDICATED RECEPTACLE | | 12 |
| 13 | 113 - DEDICATED RECEPTACLE | 180 | 20A1P | A | 20A1P | 180 | 113 - DEDICATED RECEPTACLE | | 14 |
| 15 | 113 - DEDICATED RECEPTACLE | 180 | 20A1P | B | 20A1P | 180 | 113 - DEDICATED RECEPTACLE | | 16 |
| 17 | 113 - DEDICATED RECEPTACLE | 180 | 20A1P | A | 20A1P | 180 | 113 - DEDICATED RECEPTACLE | | 18 |
| 19 | 113 - DEDICATED RECEPTACLE | 180 | 20A1P | B | 20A1P | 180 | 113 - DEDICATED RECEPTACLE | | 20 |
| 21 | 113 - DEDICATED RECEPTACLE | 180 | 20A1P | A | 20A1P | 720 | 113 - RECEPTACLES | | 22 |
| 23 | 113 - RECEPTACLES | 720 | 20A1P | B | 20A1P | 720 | 113 - RECEPTACLES | | 24 |
| 25 | 113 - RECEPTACLES | 720 | 20A1P | A | | | | | 26 |
| 27 | | | | B | | | | | 28 |
| 29 | | | | A | | | | | 30 |
| 31 | | | | B | | | | | 32 |
| 33 | | | | A | | | | | 34 |
| 35 | TRANSFER SWITCH | 435 | 30A2P | B | | | | | 36 |
| 37 | | 435 | | A | | | | | 38 |
| 39 | TRANSFER SWITCH | 435 | 30A2P | B | 30A2P | 2600 | WATER HEATER | | 40 |
| 41 | | 435 | | A | | 2600 | | | 42 |

| SERVICE PANEL LPB | | | | | | | | | |
|--|---------------------------|------|--|---|-------|---|---------------------------|--|-----|
| MAIN BUS: 225A MLO VOLTS: 240/120, 1PH, 3-WIRE BUS MATERIAL: COPPER MOUNTING: SURFACE | | | SQUARE "D" NOOD OR EQUAL W/ NEUTRAL BUS & GROUNDING BUS CIRCUIT BREAKERS BOLT-IN 10000 AIC | | | CONNECTED LOAD A PHASE 24284 VA B PHASE 24432 VA TOTAL 48716 VA 203 A | | | |
| CIR | SERVICE | VA | BKR | | BKR | VA | SERVICE | | CIR |
| 1 | 103-DEDICATED RECEPTACLES | 180 | 20A1P | A | 20A1P | 360 | 109-DEDICATED RECEPTACLES | | 2 |
| 3 | 105-DEDICATED RECEPTACLES | 360 | 20A1P | B | 20A1P | 360 | 109-DEDICATED RECEPTACLES | | 4 |
| 5 | 106-DEDICATED RECEPTACLES | 360 | 20A1P | A | 20A1P | 900 | 101,103,104 - RECEPTACLES | | 6 |
| 7 | 109 - RECEPTACLES | 720 | 20A1P | B | 20A1P | 720 | 105 - RECEPTACLES | | 8 |
| 9 | 110 - RECEPTACLES | 720 | 20A1P | A | 20A1P | 720 | 102 - RECEPTACLES | | 10 |
| 11 | 106 - RECEPTACLES | 1080 | 20A1P | B | 20A1P | 180 | 106 - TV RECEPTACLE | | 12 |
| 13 | 108 - DATA DUPLEX | 360 | 20A1P | A | 20A1P | 540 | 102 - RECEPTACLES | | 14 |
| 15 | 107 - TV RECEPTACLE | 180 | 20A1P | B | 20A1P | 600 | REFRIGERATOR | | 16 |
| 17 | GARBAGE DISPOSAL | 972 | 20A1P | A | 20A1P | 540 | 107 - GFI RECEPTACLES | | 18 |
| 19 | MICROWAVE - SOUTH | 800 | 20A1P | B | 20A1P | 800 | MICROWAVE - NORTH | | 20 |
| 21 | | | | A | | | | | 22 |
| 23 | | | | B | | | | | 24 |
| 25 | | | | A | | | | | 26 |
| 27 | | | | B | | | | | 28 |
| 29 | | | | A | | | | | 30 |
| 31 | | | | B | 30A2P | 1456 | AIR CONDENSER | | 32 |
| 33 | | | | A | | 1456 | | | 34 |
| 35 | FURNACE | 6360 | 60A2P | B | 30A2P | 1456 | AIR CONDENSER | | 36 |
| 37 | | 6360 | | A | | 1456 | | | 38 |
| 39 | FURNACE | 6360 | 60A2P | B | 30A2P | 3000 | RANGE | | 40 |
| 41 | | 6360 | | A | | 3000 | | | 42 |

| ELECTRIC SCHEDULE | | | | | | |
|---|--|---|---------------|----|------|--|
| MANUF. | MODEL | # | LAMPS TYPE | W | MNT | REMARKS |
|  WILLIAMS | 50G-S24-LED*UT 50/835-RPC12125-ED*UT-UNV | | LED | 51 | CLG | 24" x 48" STATIC TROFFER FIXTURE, HOUSING: 22 GAUGE DIE FORMED C.R.S. SHIELDING: FROSTED ACRYLIC, PATTERN #12. |
|  WILLIAMS | 50G-S24-LED*UT 50/835-RPC12125-EM/BSL310-ED*UT-UNV | | LED | 51 | CLG | 24" x 48" STATIC TROFFER FIXTURE, HOUSING: 22 GAUGE DIE FORMED C.R.S. SHIELDING: FROSTED PATTERN #12 & EMERGENCY DRIVER. |
|  WILLIAMS | 50G-S22-LED*UT30/85-RPC12125-ED*UT-UNV | | LED | 25 | CLG | 24" x 24" STATIC TROFFER FIXTURE, HOUSING: 22 GAUGE DIE FORMED C.R.S. SHIELDING: FROSTED PATTERN #12. |
|  WILLIAMS | 50G-S22-LED*UT30/85-RPC12125-EM/BSL310-ED*UT-UNV | | LED | 25 | CLG | 24" x 24" STATIC TROFFER FIXTURE, HOUSING: 22 GAUGE DIE FORMED C.R.S. SHIELDING: FROSTED PATTERN #12 & EMERGENCY DRIVER. |
|  BROAN | GRAINGER #4C772 | | | | CLG | 80 CFM CEILING MOUNT BATHROOM VENTILATOR. |
|  LITHONIA | TWR1LED 1 40K MVOLT | | LED | 33 | WALL | EXTERIOR, SURFACE MOUNT LIGHT FIXTURE, WITH ALUMINUM HOUSING. PRISMATIC GLASS LENS. |
|  LITHONIA | OVERHEAD DOOR OPERATOR | | | | WALL | 115V, 1-PH, TROLLEY TYPE. SEE SPECIFICATION SECTION 08720. |
|  LITHONIA | LHQM P W3 R N | | | | WALL | QUANTUM THERMOPLASTIC EXIT/UNIT COMBO (2) LED 5.4 KRYPTON LAMPS. |
|  TORK | 2001 | | | | WALL | 120V PHOTO ELECTRIC CONTROL OF EXTERIOR LIGHTS. |
|  PATHWAY | PLEXLEDXUR | | | | WALL | SOLID STATE 2-RATE CHARGER. NI-CAD BATTERY (2) LED LAMPS. 3.7 WATTS. 0.040 A. |
|  LITHONIA | TWS LED 1 50K 120 | | LED | 19 | WALL | DIE-CAST ALUMINUM WITH IMPACT RESISTANT POLYCARBONATE FULLY GASKETED LENS. |
| ELECTRICAL FIXTURES AND EQUIPMENT ARE SCHEDULED BY MANUFACTURER AND MODEL NUMBER FOR DESIGN INTENT ONLY, APPROVED EQUALS MAY BE SUBSTITUTED. | | | | | | |

| TRANSFER SWITCH | | | | | | | | | |
|-----------------|---------------------------|-----|--|---|-------|---|-------------------------|--|----|
| | | | TRANSFER SWITCH EQUAL TO SQUARE "D" MODEL Q0112L125G LOAD CENTER BOX Q0C16US COVER, Q02DTI MECHANICAL INTERLOCK ATTACHMENT U030N POWER INLET 120/240V, 12 CIRCUIT | | | CONNECTED LOAD A PH. 329VA B PH. 540VA TOTAL 869VA | | | |
| 1 | 107 - LIGHTS | 255 | 20A1P | A | 20A1P | 74 | 111 & 112 - LIGHTS/FANS | | 2 |
| 3 | 111 & 112 GFI RECEPTACLES | 360 | 20A1P | B | 20A1P | 180 | 107 RECEPTACLE | | 4 |
| 5 | - | - | - | A | - | - | | | 6 |
| 7 | - | - | - | B | - | - | | | 8 |
| 9 | - | - | - | A | - | - | | | 10 |
| 11 | - | - | - | B | - | - | | | 12 |

ELECTRICAL NOTES

1. DRAWINGS AND DIAGRAMS ARE DIAGRAMMATIC AND SHALL NOT BE SCALED. REFER TO ARCHITECTURAL DRAWINGS FOR DIMENSIONS.

2. ELECTRICAL WORK SHALL BE INSTALLED IN STRICT COMPLIANCE WITH THE LATEST EDITION OF THE NATIONAL ELECTRIC CODE (N.E.C.).

3. PROVIDE ELECTRICAL EQUIPMENT AND ACCESSORIES REQUIRED FOR A COMPLETE AND OPERATIONAL ELECTRICAL SYSTEM AS REQUIRED BY MANUFACTURER'S INSTRUCTIONS AND DIRECTIONS FOR SYSTEMS SPECIFIED.

4. SWITCHES AND RECEPTACLES SHALL BE EQUAL TO THE AMPERE RATING SHOWN IN THE PANEL SCHEDULE. RECEPTACLES SHALL BE GROUND-FAULT INTERRUPTION TYPE WHERE SHOWN OR AS REQUIRED BY CODE.

5. BATHROOM EXHAUST FAN IS TO BE PROVIDED AND INSTALLED BY THE ELECTRICAL CONTRACTOR.

6. SEE HVAC SCHEDULE FOR EQUIPMENT TO BE HARD WIRED, PROVIDE SERVICE DISCONNECT AT EACH.

7. ALL RECEPTACLES IN GARAGE AREA TO BE MOUNTED AT 48" A.F.F.

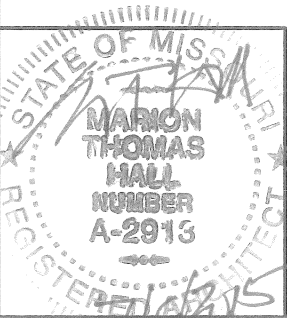
8. COORDINATE WORK WITH OTHER TRADES PRIOR TO COMMENCING WITH ELECTRICAL WORK.
9. CONDUCTOR AND BREAKER SIZE MAY VARY PER MANUFACTURER ON THE EQUIPMENT SPECIFIED. ELECTRIC CONTRACTOR TO VERIFY SIZES WITH EXACT EQUIPMENT ORDERED PRIOR TO PURCHASING ELECTRICAL SUPPLIES. USE ONLY COPPER INSIDE BUILDING.

10. FIXTURE LOCATIONS ARE APPROXIMATE, EXACT LOCATIONS TO BE DETERMINED AFTER COLLABORATION WITH THE OWNER AND OTHER TRADES.

11. CONTRACTOR SHALL PROVIDE SERVICE DISCONNECTS AS REQUIRED AT EXTERIOR OF BUILDING.

12. PROVIDE BLOCKING FOR ELECTRICAL DEVICES AS REQUIRED FOR A SECURE APPLICATION.

13. CONTRACTOR TO INSTALL CONDUCTORS IN CONDUIT WITH DISCONNECT(S) AT EXISTING METER ON EXISTING MAINTENANCE BUILDING FOR A FUNCTIONAL ELECTRICAL SERVICE TO NEW BUILDING. SEE SITE PLAN.



ELECTRICAL PANELS

MISSOURI DEPARTMENT
OF TRANSPORTATION

DIVISION OF GENERAL SERVICES
FACILITIES MANAGEMENT

Osage Beach Project Office
749 State Highway 42, Osage Beach, MO 65065
Central District - Miller County

| |
|-------------------------|
| DESIGN BY: LARRY CARVER |
| DRAWN BY: LARRY CARVER |
| DATE: 6-26-15 |
| Sheet |
| 21 of 21 |