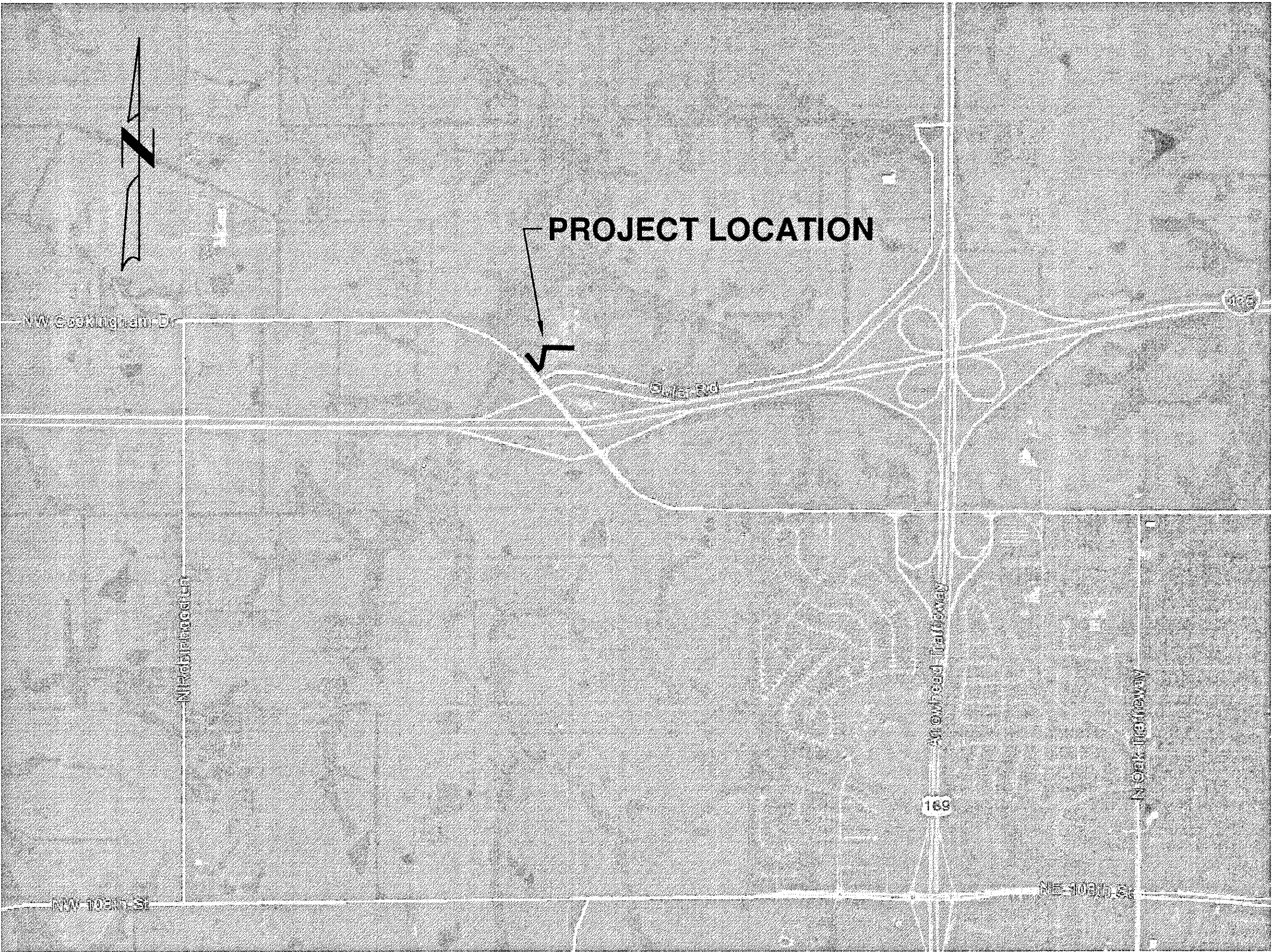


PLANS FOR
NASHUA MODOT MAINTENANCE FACILITY
SANITARY SEWER SYSTEM
KANSAS CITY, MISSOURI
2015

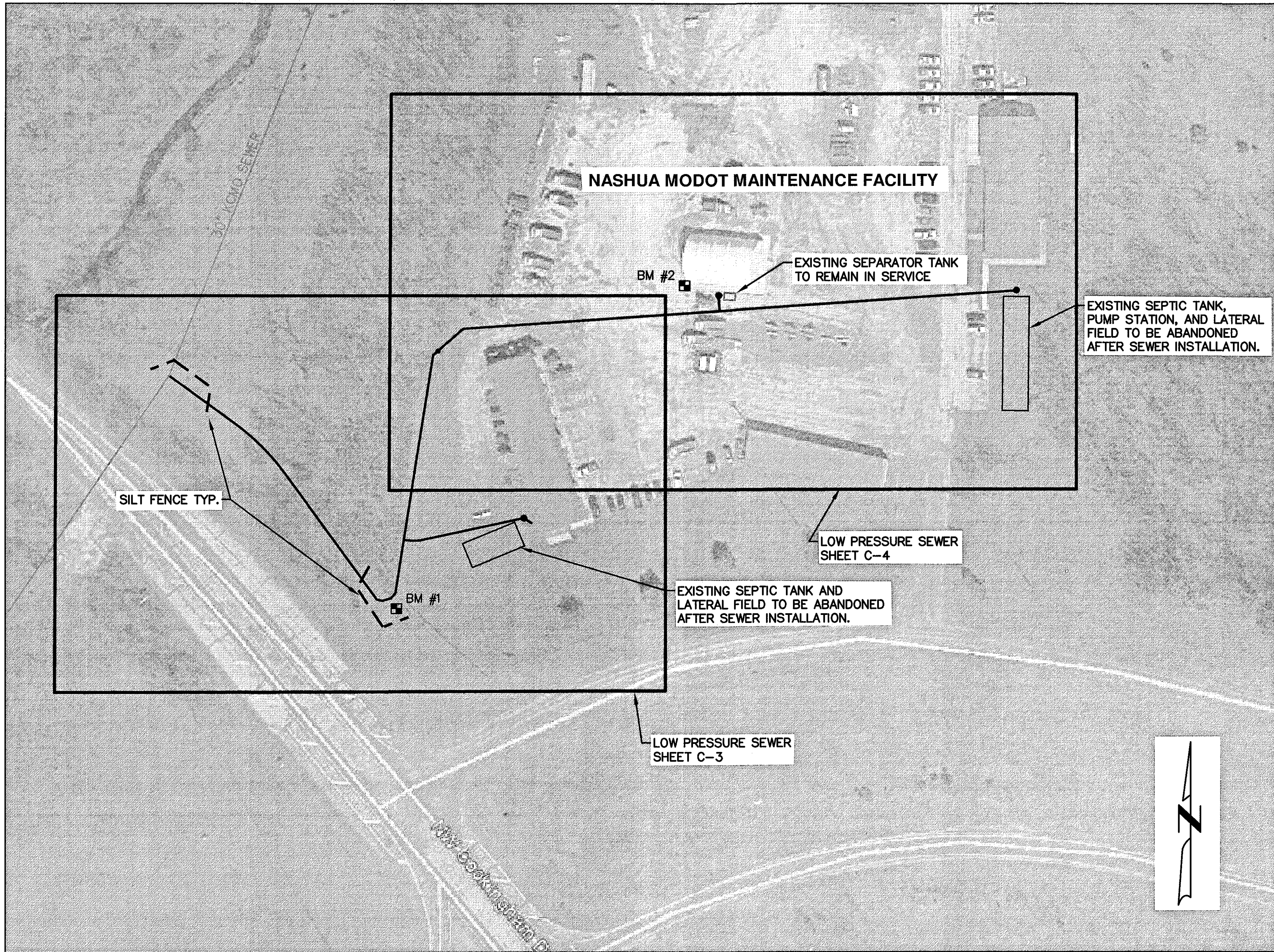
NOTES:

1. INFORMATION AND REFERENCES TO EXISTING CONDITIONS SHOWN ON THESE PLANS ARE THE BEST INFORMATION AND REFERENCES AVAILABLE TO SHAFER, KLINE & WARREN, INC., AT THE TIME OF PLAN PREPARATION. THE PLANS REFLECT INFORMATION PROVIDED BY FIELD SURVEYS, PLATS AND PLANS FURNISHED BY OTHERS WHO LIMIT THEIR GUARANTEES AND RESPONSIBILITIES.
2. BY USE OF THESE PLANS THE CONTRACTOR AGREES THAT HE SHALL BE SOLELY RESPONSIBLE FOR THE SAFETY OF THE CONSTRUCTION WORKERS AND OF THE PUBLIC.
3. ALL CONSTRUCTION PERFORMED ON THIS PROJECT SHALL CONFORM TO THE SPECIFICATIONS AND STANDARDS OF MODOT AND THE CITY OF KANSAS CITY, MISSOURI.
4. THE CONTRACTOR SHALL THOROUGHLY REVIEW AND BECOME FAMILIAR WITH THE SPECIFICATIONS AND SPECIAL CONDITIONS OF THE CONTRACT DOCUMENTS, PRIOR TO BEGINNING CONSTRUCTION ON THIS PROJECT.
5. THE CONTRACTOR SHALL HAVE ONE (1) SIGNED COPY OF THE PLANS (APPROVED BY THE MODOT) AND ONE (1) COPY OF THE SPECIFICATIONS AT THE JOB SITE AT ALL TIMES.
6. ALL TRAFFIC CONTROL IN CONJUNCTION WITH CONSTRUCTION IN THE RIGHT-OF-WAY SHALL BE THE RESPONSIBILITY OF THE CONTRACTOR. THE CONTRACTOR SHALL BE RESPONSIBLE FOR MAINTAINING ALL TRAFFIC SIGNAGE DURING THE PROGRESS OF THE PROJECT. SIGNS THAT ARE IN CONFLICT WITH THE PROPOSED IMPROVEMENTS SHALL BE REMOVED AND REPLACED BY THE CONTRACTOR IN CONFORMANCE WITH THE MANUAL OF UNIFORM TRAFFIC CONTROL DEVICES.
7. SILTATION AND EROSION CONTROL MEASURES SHALL BE IN PLACE PRIOR TO THE DISTURBANCE OF THE GROUND.
8. THE CONTRACTOR IS RESPONSIBLE FOR PROVIDING BERMS, SILT FENCES, STRAW BALES, OR OTHER MEANS TO PREVENT EROSION FROM REACHING THE PUBLIC RIGHT-OF-WAY. IN THE EVENT THE PREVENTION MEASURES ARE NOT EFFECTIVE, THE CONTRACTOR SHALL REMOVE ANY DEBRIS AND EROSION AND RESTORE THE RIGHT-OF-WAY TO ORIGINAL OR BETTER CONDITION.
9. THE CONTRACTOR SHALL BE SOLELY RESPONSIBLE FOR ALL AREAS THAT THEY OR THEIR SUBCONTRACTORS DISTURB, BOTH WITHIN AND BEYOND THE PROJECT LIMITS. THESE AREAS SHALL BE RESTORED, RESEED, OR RESEED TO A STATE THAT IS EQUAL TO OR BETTER THAN THE PRIOR CONDITION. THE CONTRACTOR SHALL BEAR THE RELATED EXPENSES, UNLESS DENOTED OTHERWISE WITHIN THE CONTRACT DOCUMENTS. ALL DISTURBED AREAS WITHIN THE PROJECT LIMITS WILL BE SEED AND MULCHED.
10. ALL TREES, SHRUBS, BUSHES, AND BRUSH, WITHIN THE GRADING LIMITS MARKED WITH AN "X" ON THE PLANS, MAY BE REMOVED BY THE CONTRACTOR. LARGE TREES, WITHIN THE CONSTRUCTION EASEMENTS THAT ARE NOT SHOWN ON THE PLANS, SHALL BE BROUGHT TO THE ATTENTION OF THE ENGINEER PRIOR TO DISTURBANCE. EXCEPTIONALLY GOOD TREES SHALL BE SPARED BY ADJUSTING GRADING DURING CONSTRUCTION, AS DIRECTED BY THE ENGINEER. ALL TREES, WITHIN THE CONSTRUCTION LIMITS, TO BE SAVED SHALL HAVE THEIR TRUNKS PHYSICALLY PROTECTED, PRIOR TO CONSTRUCTION OPERATIONS, BY METHODS APPROVED BY THE ENGINEER.
11. NO GEOLOGICAL INFORMATION IS SHOWN ON THESE PLANS.
12. ALL EXCAVATION SHALL BE UNCLASSIFIED. NO SEPARATE PAYMENT WILL BE MADE FOR ROCK EXCAVATION.
13. PROPERTY PINS DISTURBED DURING CONSTRUCTION SHALL BE RESTORED BY A LICENSED SURVEYOR AT CONTRACTOR EXPENSE.
14. ALL PUBLIC OR PRIVATE PROPERTY SUCH AS UTILITIES, ROADS, DRIVES, MAIL BOXES, FENCES, POLES, ETC., DAMAGED AS A RESULT OF CONSTRUCTION SHALL BE RESTORED TO ORIGINAL CONDITIONS.
15. THE COMPLETED PUMP STATIONS AND LOW PRESSURE SEWER SHALL BE OWNED AND OPERATED BY THE MISSOURI DEPARTMENT OF TRANSPORTATION.
16. SITE CLEAN-UP SHALL OCCUR DAILY.
17. ALL EXCAVATIONS SHALL BE PROTECTED.

T52N, R33W, S15,16,21,22



L:\150258-010_CAD\CIVIL\150258-010 COVER.DWG	DATE: 9/17/2015
LAYOUT: C-101	BY: BEAM
XREF DWG1: NONE	XREF DWG2: NONE
XREF DWG3: NONE	XREF DWG4: NONE



SITE LAYOUT
NOT TO SCALE

NOTE:
EXISTING SEPTIC TANKS AND LATERAL FIELDS SHALL BE ABANDONED IN PLACE. SEE SECTION 13330, WASTE HOLDING TANK AND SEPTIC TANK DECOMMISSIONING TO ABANDON THE SEPTIC TANKS IN PLACE.



LEGEND	
TV	BURIED CABLE TELEVISION
YEP	BURIED TELEPHONE
YEP	TELEPHONE PEDESTAL
F.F.E.	FENCE
Y	FINISHED FLOOR ELEVATION (FIRST FLOOR)
Y	FIRE HYDRANT
Y	FLOWLINE SWALE
Y	GAS MAIN
Y	GAS OR WATER METER
Y	GAS OR WATER VALVE
Y	GUARD RAIL
Y	GUY ANCHOR
Y	LIGHT POLE
Y	MAIL BOX
Y	MANHOLE
Y	OVERHEAD POWER
Y	BORE LOCATION
Y	PROPERTY OWNERSHIP LINE
Y	RIP RIP MAT
Y	EXISTING SANITARY SEWER
Y	SHRUB
Y	PERMANENT EASEMENT
Y	STORM SEWER
Y	TEMPORARY CONSTRUCTION EASEMENT
Y	TREE
Y	TREE REMOVAL
Y	POWER POLE
Y	POWER POLE W/LIGHT
Y	EXISTING WATER MAIN
Y	UNDERGROUND POWER
Y	ABANDON EXISTING PIPE
Y	EXISTING WATER METER
Y	POWER RISER
Y	GPS POINT
Y	EXISTING CONTOUR
Y	GATE VALVE
Y	REDUCER
Y	PROPOSED SILT FENCE

BENCHMARKS

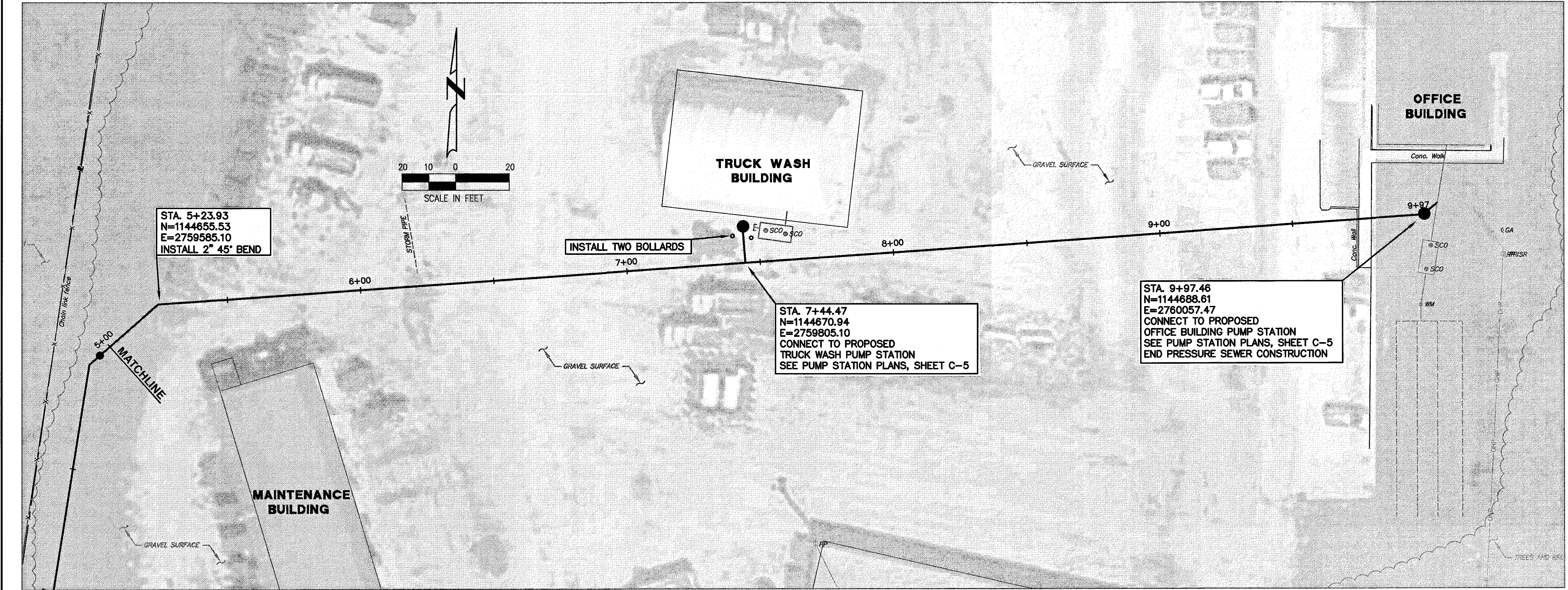
BENCHMARK #1
SOUTHWEST CORNER OF CONCRETE PAD AT TRUCK WASH.
N=1144692.17 E=2759773.76
ELEV = 969.40

BENCHMARK #2
100D NAIL NEAR RIGHT OF WAY MARKER
N=1144428.17 E=2759515.07
ELEV = 970.98

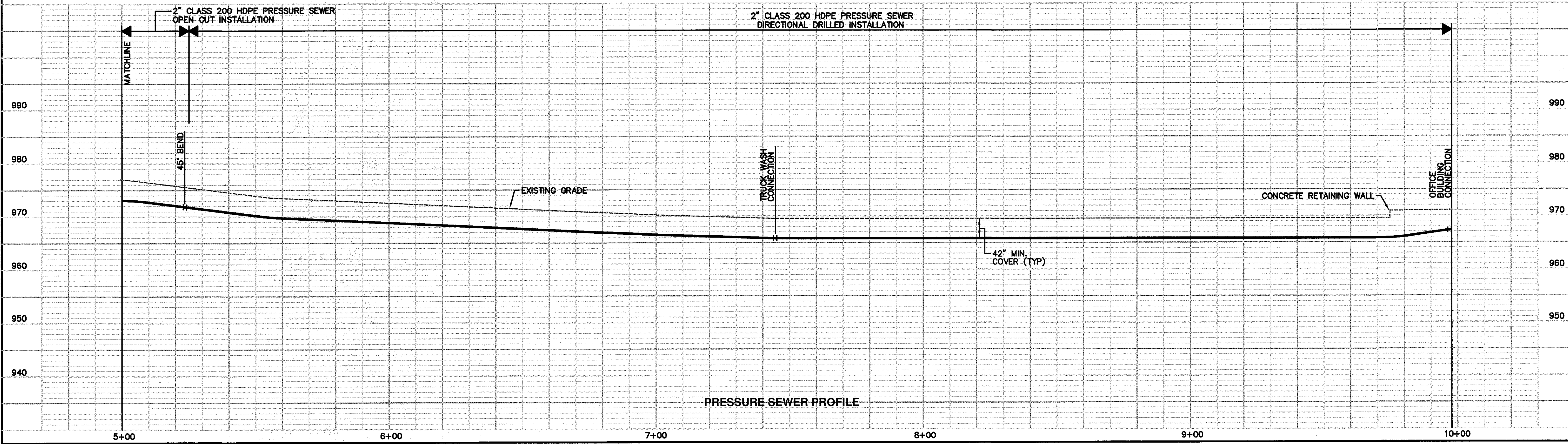
PROJECT SUMMARY:
THE PROJECT CONSISTS OF THE INSTALLATION OF THREE (3) SIMPLEX, GRINDER PUMP STATIONS WITH A COMMON 2-INCH FORCE MAIN THAT WILL DISCHARGE WASTEWATER INTO AN EXISTING MANHOLE OF THE KCMO SECOND CREEK INTERCEPTOR SEWER. EACH GRINDER PUMP STATION WILL INCLUDE A 1 HP MOTOR AND PUMP (WITH 1 PUMP PROVIDED FOR FUTURE USE) WITH A RATED CAPACITY AS SPECIFIED; INSTALLED INTO A 40 GALLON WETWELL, AS SPECIFIED AND RECOMMENDED BY THE PUMP MANUFACTURER. ALL THE NECESSARY APPURTENANCES SHALL BE FURNISHED AND INSTALLED TO PROVIDE A COMPLETE AND FUNCTIONAL PRESSURE SEWER SYSTEM. THE TWO EXISTING SEPTIC TANKS AND PUMP STATION WILL BE REMOVED FROM SERVICE IN ACCORDANCE WITH THE PROJECT DOCUMENTS.

NASHUA MODOT MAINTENANCE FACILITY KANSAS CITY, MISSOURI		SANITARY SEWER SYSTEM SITE LAYOUT SHEET		150258-010 SHEET NO.		C-2	
<div><div>SHAFER, KLINE & WARREN, INC. 11250 Corporate Avenue, Lenexa, KS 66219-1392 913/888-7800 FAX: 913/888-7868</div><div>OFFICE LOCATIONS: COLUMBIA, MO HOUSTON, TX LENEXA, KS MACON, MO NORTH KANSAS CITY, MO TULSA, OK</div><div>CIVIL ENGINEERS ELECTRICAL ENGINEERS MECHANICAL ENGINEERS STRUCTURAL ENGINEERS LANDSCAPE ARCHITECTS LAND SURVEYORS LAND PLANNERS</div></div>				<div><div>DESIGNED BY: <u>DAB</u> DRAWN BY: <u>DAB</u> CHECKED BY: <u>STB</u> ISSUE DATE: <u>9/17/15</u></div><div>COPYRIGHT © - 2015 - SHAFER, KLINE & WARREN INC. MISSOURI CERTIFICATE OF AUTHORITY: 000143</div></div>			

L: 150258-010_CAD\CIVIL\COPY 150258-010_SUR.DWG	DATE: 9/17/2015
LAYOUT: LAYOUT1	BY: BEAM
XREF DWG1: NONE	XREF DWG2: NONE
XREF DWG3: NONE	XREF DWG4: NONE

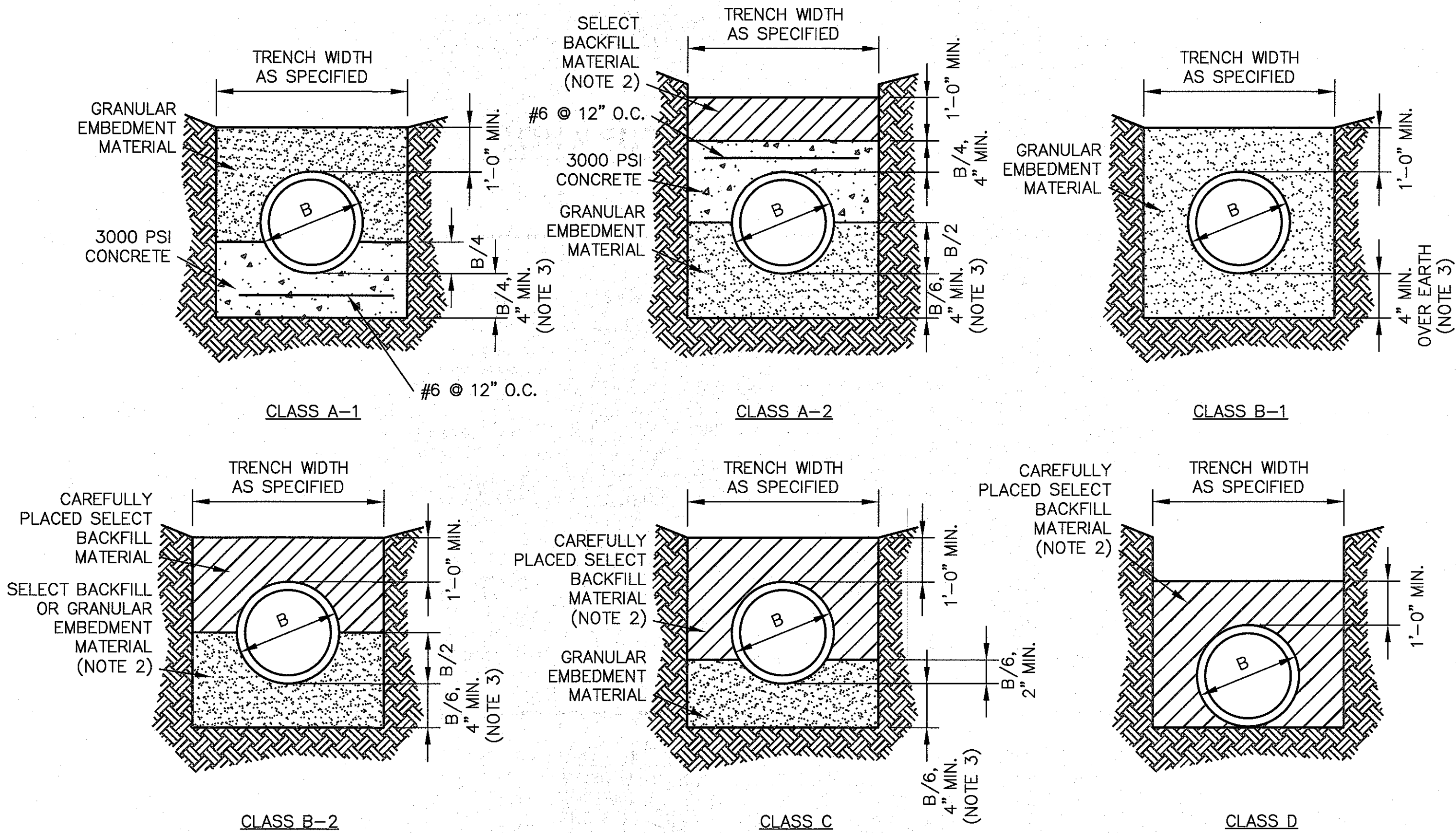


PRESSURE SEWER PLAN



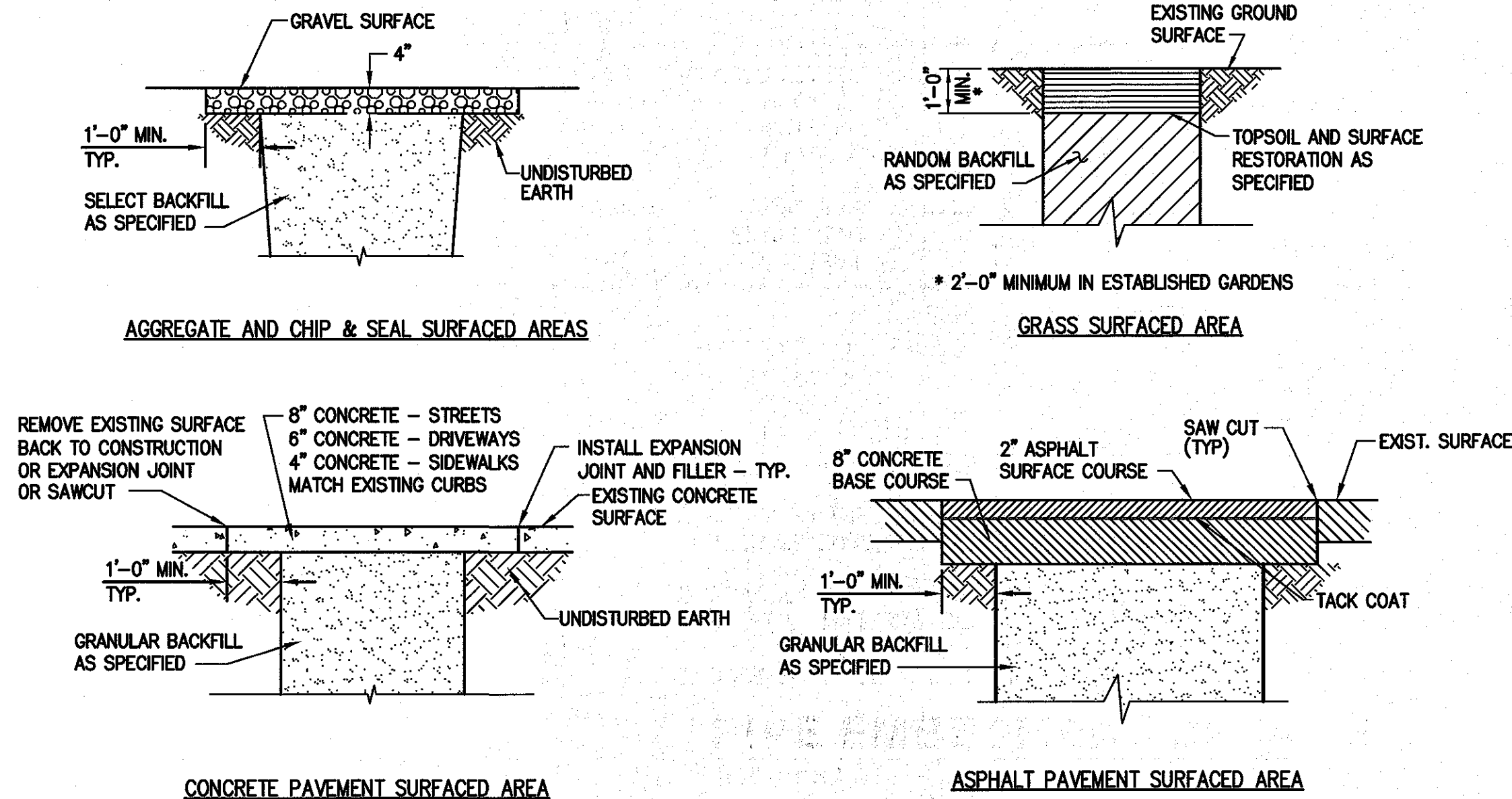
PRESSURE SEWER PROFILE

NASHUA MODOT MAINTENANCE FACILITY KANSAS CITY, MISSOURI SANITARY SEWER SYSTEM SEWER PLAN AND PROFILE	SHAFER, KLINE & WARREN, INC. 11250 Corporate Avenue, Lenexa, KS 66219-1392 913/888-7800 FAX: 913/888-7868 OFFICE LOCATIONS: COLUMBIA, MO HOUSTON, TX LENEXA, KS MACON, MO NORTH KANSAS CITY, MO TULSA, OK CIVIL ENGINEERS ELECTRICAL ENGINEERS MECHANICAL ENGINEERS STRUCTURAL ENGINEERS LANDSCAPE ARCHITECTS LAND SURVEYORS LAND PLANNERS			
	LAYOUT: LAYOUT1 XREF DWG1: NONE XREF DWG2: NONE XREF DWG3: NONE XREF DWG4: NONE	DATE: 9/17/2015 BY: BEAM	DESIGNED BY: DAB DRAWN BY: DAB CHECKED BY: STB ISSUE DATE: 9/17/15	REVISIONS 1 2 3 4 5
	MISSOURI CERTIFICATE OF AUTHORITY: 000143 COPYRIGHT © - 2015 - SHAFER, KLINE & WARREN INC. BY: APFD			
	STATE OF MISSOURI ENGINEER STEPHEN T. BAKER PE-02844			
	SHEET NO. 150258-010 C-4			

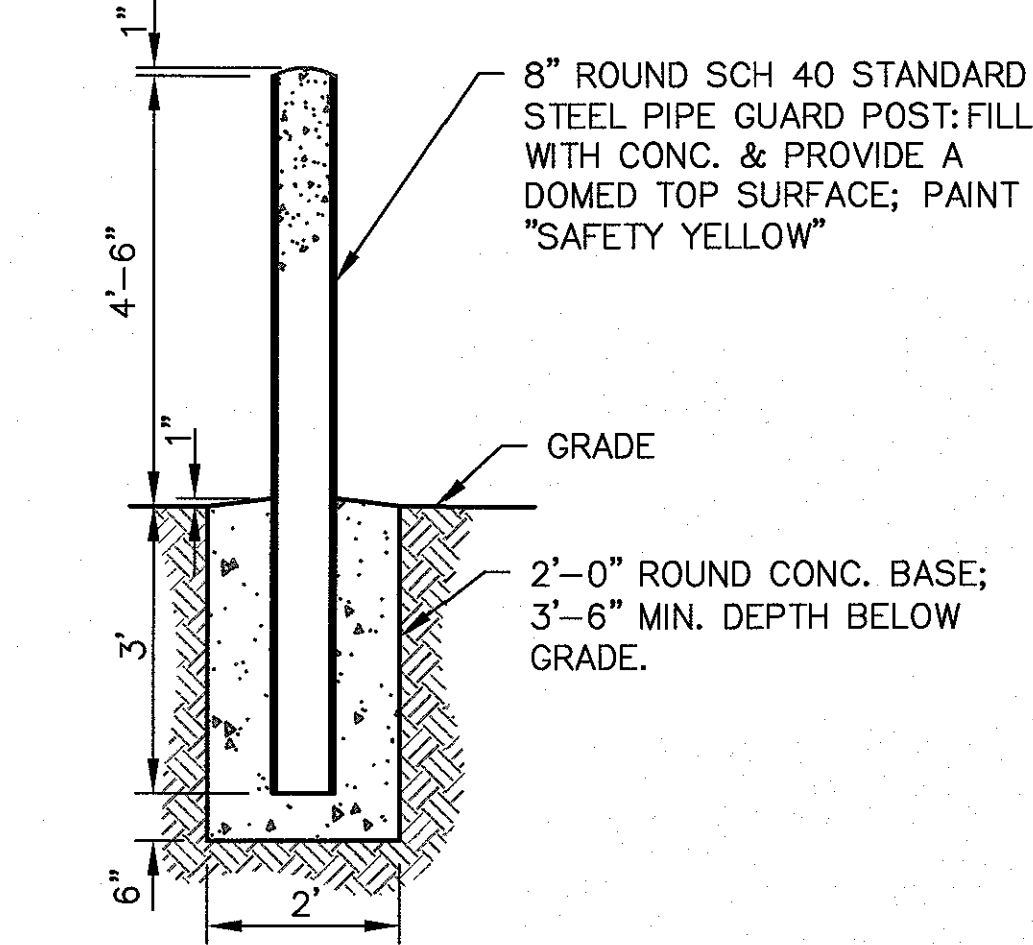


- NOTES:
- REFER TO THE PROJECT MANUAL FOR TRENCH WIDTH, COMPACTION REQUIREMENTS, AND EMBEDMENT CLASS SCHEDULE.
 - GRANULAR BACKFILL MATERIAL SHALL BE USED IN PLACE OF SELECT BACKFILL MATERIAL BENEATH STRUCTURES AND PAVED AREAS.
 - DIMENSION OVER ROCK SHALL BE B/4, 6" MIN.

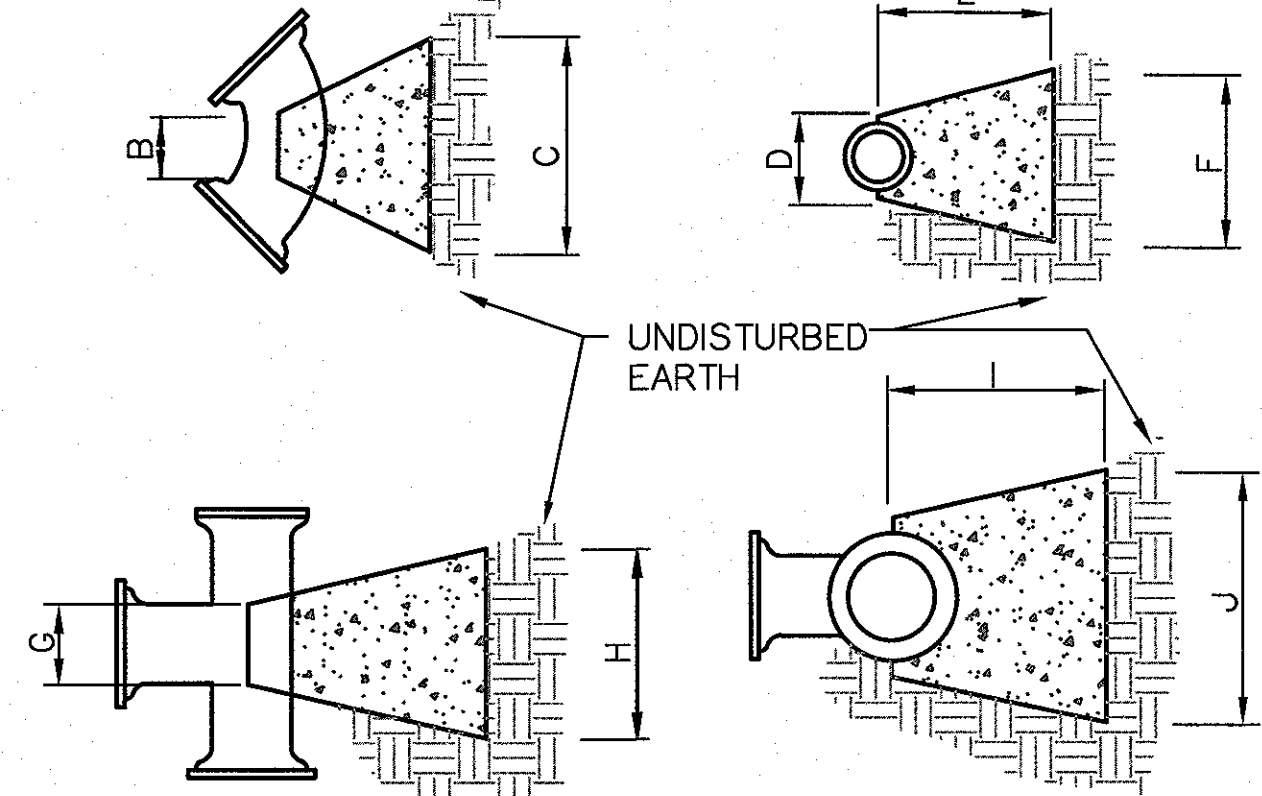
PIPE EMBEDMENT DETAILS
NOT TO SCALE



TRENCH RESTORATION DETAILS
NOT TO SCALE

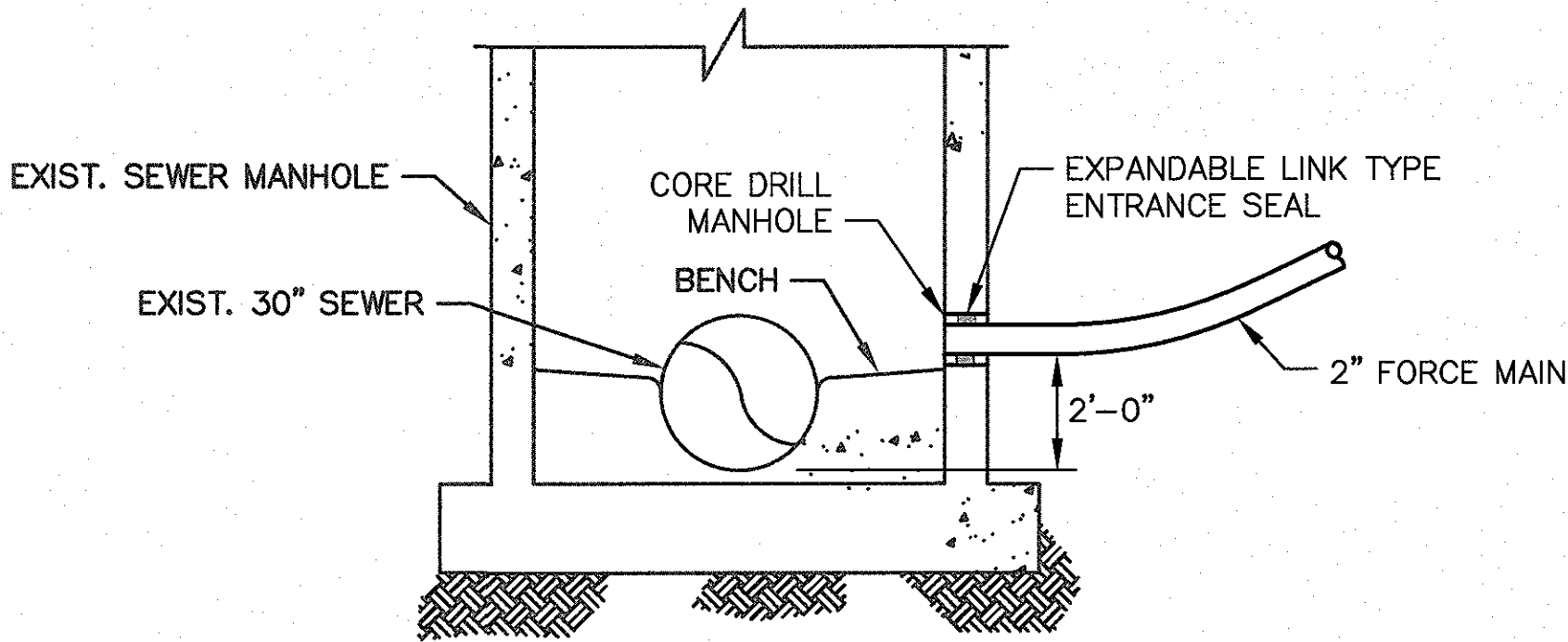


BOLLARD DETAIL
NOT TO SCALE





BENDS	B	C	D	E	F	BENDS	B	C	D	E	F
3" 11 1/4 DEG	8"	5"	8"	24"	12"	3" 45 DEG.	8"	20"	8"	24"	12"
3" 22 1/2 DEG	8"	19"	8"	24"	14"	3" 90 DEG.	8"	30"	8"	24"	14"
4" 11 1/4 DEG	8"	19"	8"	24"	12"	4" 45 DEG.	8"	20"	8"	24"	14"
4" 22 1/2 DEG	8"	19"	8"	24"	14"	4" 90 DEG.	8"	30"	8"	24"	14"
6" 11 1/4 DEG	8"	12"	8"	24"	12"	6" 45 DEG.	8"	20"	8"	24"	12"
6" 22 1/2 DEG	8"	12"	8"	24"	14"	6" 90 DEG.	8"	30"	8"	24"	14"
8" 11 1/4 DEG	8"	16"	10"	24"	12"	8" 45 DEG.	8"	23"	10"	24"	16"
8" 22 1/2 DEG	8"	16"	10"	24"	16"	8" 90 DEG.	8"	34"	10"	24"	20"
12" 11 1/4 DEG	8"	26"	12"	24"	16"	12" 45 DEG.	8"	34"	12"	24"	24"
12" 22 1/2 DEG	8"	34"	12"	24"	24"	12" 90 DEG.	8"	50"	12"	24"	30"
16" 11 1/4 DEG	8"	20"	16"	24"	16"	16" 45 DEG.	8"	42"	16"	30"	30"
16" 22 1/2 DEG	8"	32"	16"	24"	20"	16" 90 DEG.	8"	58"	16"	36"	42"
TEES	G	H	I	J		TEES	G	H	I	J	
6" X 6" X 6"	8"	30"	24"	18"		12" X 12" X 12"	12"	54"	30"	40"	
8" X 8" X 6"	12"	40"	24"	24"		16" X 16" X 16"	12"	65"	36"	60"	

TYPICAL CONCRETE BACKING BLOCKS
NOT TO SCALE

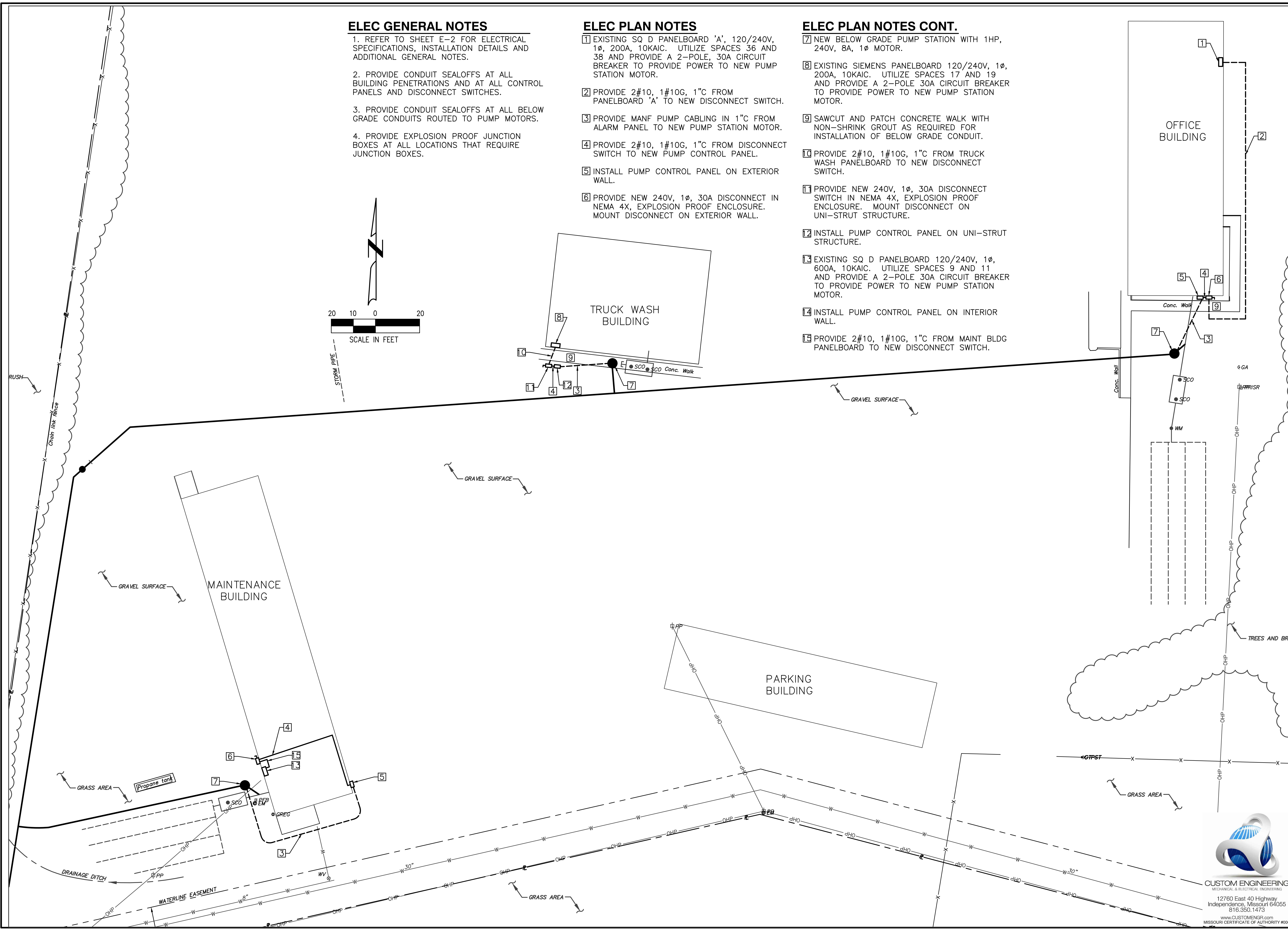


NOTE:
KCMO WATER SERVICES DEPARTMENT LINE MAINTENANCE SHALL INSPECT THE CONNECTION TO MANHOLE CONSTRUCTION. CONTRACTOR SHALL CALL SEWER DISPATCH AT 816-513-4810 TO SCHEDULE INSPECTIONS.

CONNECTION TO EXISTING MANHOLE
NOT TO SCALE

150258--010 SHEET NO.		C-7	
NASHUA MODOT MAINTENANCE FACILITY KANSAS CITY, MISSOURI		 SHAHER, KLINE & WARREN, INC. 11250 Corporate Avenue, Lenexa, KS 66219-1392 913/888-7800 FAX: 913/888-7868 OFFICE LOCATIONS: COLUMBIA, MO HOUSTON, TX LENEXA, KS MACON, MO NORTH KANSAS CITY, MO TULSA, OK CIVIL ENGINEERS ELECTRICAL ENGINEERS MECHANICAL ENGINEERS STRUCTURAL ENGINEERS LANDSCAPE ARCHITECTS LAND SURVEYORS LAND PLANNERS	
SANITARY SEWER SYSTEM EROSION CONTROL DETAILS		DESIGNED BY: DAB DRAWN BY: DAB CHECKED BY: STB ISSUE DATE: 9/17/15 REV. DATE REVISIONS BY APP'D 5 4 3 2 1	
		 STATE OF MISSOURI PROFESSIONAL ENGINEER STEPHEN J. KLINE NO. 102294 EXPIRATION DATE 12/31/2016	
		COPYRIGHT © - 2015 - SHAHER, KLINE & WARREN INC. MISSOURI CERTIFICATE OF AUTHORITY: 000143	

P:\PROJ\2015\A15052 - MODOT NASHUA PUMP STATIONS\CAD\ELEC\E-1 SITE POWER PLAN.dwg
DATE: 9/17/2015
BY: CKB
XREF DWG2: NONE
XREF DWG3: NONE
XREF DWG4: NONE



ELEC GENERAL NOTES

1. REFER TO SHEET E-2 FOR ELECTRICAL SPECIFICATIONS, INSTALLATION DETAILS AND ADDITIONAL GENERAL NOTES.
2. PROVIDE CONDUIT SEALOFFS AT ALL BUILDING PENETRATIONS AND AT ALL CONTROL PANELS AND DISCONNECT SWITCHES.
3. PROVIDE CONDUIT SEALOFFS AT ALL BELOW GRADE CONDUITS ROUTED TO PUMP MOTORS.
4. PROVIDE EXPLOSION PROOF JUNCTION BOXES AT ALL LOCATIONS THAT REQUIRE JUNCTION BOXES.

ELEC PLAN NOTES

- 1 EXISTING SQ D PANELBOARD 'A', 120/240V, 1Ø, 200A, 10KAIC. UTILIZE SPACES 36 AND 38 AND PROVIDE A 2-POLE, 30A CIRCUIT BREAKER TO PROVIDE POWER TO NEW PUMP STATION MOTOR.
- 2 PROVIDE 2#10, 1#10G, 1" C FROM PANELBOARD 'A' TO NEW DISCONNECT SWITCH.
- 3 PROVIDE MANF PUMP CABLING IN 1" C FROM ALARM PANEL TO NEW PUMP STATION MOTOR.
- 4 PROVIDE 2#10, 1#10G, 1" C FROM DISCONNECT SWITCH TO NEW PUMP CONTROL PANEL.
- 5 INSTALL PUMP CONTROL PANEL ON EXTERIOR WALL.
- 6 PROVIDE NEW 240V, 1Ø, 30A DISCONNECT IN NEMA 4X, EXPLOSION PROOF ENCLOSURE. MOUNT DISCONNECT ON EXTERIOR WALL.

ELEC PLAN NOTES CONT.

- 7 NEW BELOW GRADE PUMP STATION WITH 1HP, 240V, 8A, 1Ø MOTOR.
- 8 EXISTING SIEMENS PANELBOARD 120/240V, 1Ø, 200A, 10KAIC. UTILIZE SPACES 17 AND 19 AND PROVIDE A 2-POLE 30A CIRCUIT BREAKER TO PROVIDE POWER TO NEW PUMP STATION MOTOR.
- 9 SAWCUT AND PATCH CONCRETE WALK WITH NON-SHRINK GROUT AS REQUIRED FOR INSTALLATION OF BELOW GRADE CONDUIT.
- 10 PROVIDE 2#10, 1#10G, 1" C FROM TRUCK WASH PANELBOARD TO NEW DISCONNECT SWITCH.
- 11 PROVIDE NEW 240V, 1Ø, 30A DISCONNECT SWITCH IN NEMA 4X, EXPLOSION PROOF ENCLOSURE. MOUNT DISCONNECT ON UNI-STRUT STRUCTURE.
- 12 INSTALL PUMP CONTROL PANEL ON UNI-STRUT STRUCTURE.
- 13 EXISTING SQ D PANELBOARD 120/240V, 1Ø, 600A, 10KAIC. UTILIZE SPACES 9 AND 11 AND PROVIDE A 2-POLE 30A CIRCUIT BREAKER TO PROVIDE POWER TO NEW PUMP STATION MOTOR.
- 14 INSTALL PUMP CONTROL PANEL ON INTERIOR WALL.
- 15 PROVIDE 2#10, 1#10G, 1" C FROM MAINT BLDG PANELBOARD TO NEW DISCONNECT SWITCH.

5		4		3		2		1		REV.		DATE		BY		APP'D	
Designed By: CKB		Drawn By: CKB		Checked By: TRW		Issue Date: 9-17-2015		COPYRIGHT © 2015-SHAFER, KLINE & WARREN INC.		REVISIONS		DATE		BY		APP'D	
SHAVER, KLINE & WARREN, INC.		11250 Corporate Avenue, Lenexa, KS 66219-1392		913/888-7800		FAX: 913/888-7868		OFFICE LOCATIONS:		TULSA, OK		MACON, MO		NORTH KANSAS CITY, MO		LENEXA, KS	
SHAVER, KLINE & WARREN, INC.		11250 Corporate Avenue, Lenexa, KS 66219-1392		913/888-7800		FAX: 913/888-7868		OFFICE LOCATIONS:		TULSA, OK		MACON, MO		NORTH KANSAS CITY, MO		LENEXA, KS	
SHAVER, KLINE & WARREN, INC.		11250 Corporate Avenue, Lenexa, KS 66219-1392		913/888-7800		FAX: 913/888-7868		OFFICE LOCATIONS:		TULSA, OK		MACON, MO		NORTH KANSAS CITY, MO		LENEXA, KS	
SHAVER, KLINE & WARREN, INC.		11250 Corporate Avenue, Lenexa, KS 66219-1392		913/888-7800		FAX: 913/888-7868		OFFICE LOCATIONS:		TULSA, OK		MACON, MO		NORTH KANSAS CITY, MO		LENEXA, KS	
SHAVER, KLINE & WARREN, INC.		11250 Corporate Avenue, Lenexa, KS 66219-1392		913/888-7800		FAX: 913/888-7868		OFFICE LOCATIONS:		TULSA, OK		MACON, MO		NORTH KANSAS CITY, MO		LENEXA, KS	
SHAVER, KLINE & WARREN, INC.		11250 Corporate Avenue, Lenexa, KS 66219-1392		913/888-7800		FAX: 913/888-7868		OFFICE LOCATIONS:		TULSA, OK		MACON, MO		NORTH KANSAS CITY, MO		LENEXA, KS	
SHAVER, KLINE & WARREN, INC.		11250 Corporate Avenue, Lenexa, KS 66219-1392		913/888-7800		FAX: 913/888-7868		OFFICE LOCATIONS:		TULSA, OK		MACON, MO		NORTH KANSAS CITY, MO		LENEXA, KS	
SHAVER, KLINE & WARREN, INC.		11250 Corporate Avenue, Lenexa, KS 66219-1392		913/888-7800		FAX: 913/888-7868		OFFICE LOCATIONS:		TULSA, OK		MACON, MO		NORTH KANSAS CITY, MO		LENEXA, KS	
SHAVER, KLINE & WARREN, INC.		11250 Corporate Avenue, Lenexa, KS 66219-1392		913/888-7800		FAX: 913/888-7868		OFFICE LOCATIONS:		TULSA, OK		MACON, MO		NORTH KANSAS CITY, MO		LENEXA, KS	
SHAVER, KLINE & WARREN, INC.		11250 Corporate Avenue, Lenexa, KS 66219-1392		913/888-7800		FAX: 913/888-7868		OFFICE LOCATIONS:		TULSA, OK		MACON, MO		NORTH KANSAS CITY, MO		LENEXA, KS	
SHAVER, KLINE & WARREN, INC.		11250 Corporate Avenue, Lenexa, KS 66219-1392		913/888-7800		FAX: 913/888-7868		OFFICE LOCATIONS:		TULSA, OK		MACON, MO		NORTH KANSAS CITY, MO		LENEXA, KS	
SHAVER, KLINE & WARREN, INC.		11250 Corporate Avenue, Lenexa, KS 66219-1392		913/888-7800		FAX: 913/888-7868		OFFICE LOCATIONS:		TULSA, OK		MACON, MO		NORTH KANSAS CITY, MO		LENEXA, KS	
SHAVER, KLINE & WARREN, INC.		11250 Corporate Avenue, Lenexa, KS 66219-1392		913/888-7800		FAX: 913/888-7868		OFFICE LOCATIONS:		TULSA, OK		MACON, MO		NORTH KANSAS CITY, MO		LENEXA, KS	
SHAVER, KLINE & WARREN, INC.		11250 Corporate Avenue, Lenexa, KS 66219-1392		913/888-7800		FAX: 913/888-7868		OFFICE LOCATIONS:		TULSA, OK		MACON, MO		NORTH KANSAS CITY, MO		LENEXA, KS	
SHAVER, KLINE & WARREN, INC.		11250 Corporate Avenue, Lenexa, KS 66219-1392		913/888-7800		FAX: 913/888-7868		OFFICE LOCATIONS:		TULSA, OK		MACON, MO		NORTH KANSAS CITY, MO		LENEXA, KS	
SHAVER, KLINE & WARREN, INC.		11250 Corporate Avenue, Lenexa, KS 66219-1392		913/888-7800		FAX: 913/888-7868		OFFICE LOCATIONS:		TULSA, OK		MACON, MO		NORTH KANSAS CITY, MO		LENEXA, KS	
SHAVER, KLINE & WARREN, INC.		11250 Corporate Avenue, Lenexa, KS 66219-1392		913/888-7800		FAX: 913/888-7868		OFFICE LOCATIONS:		TULSA, OK		MACON, MO		NORTH KANSAS CITY, MO		LENEXA, KS	
SHAVER, KLINE & WARREN, INC.		11250 Corporate Avenue, Lenexa, KS 66219-1392		913/888-7800		FAX: 913/888-7868		OFFICE LOCATIONS:		TULSA, OK		MACON, MO		NORTH KANSAS CITY, MO		LENEXA, KS	
SHAVER, KLINE & WARREN, INC.		11250 Corporate Avenue, Lenexa, KS 66219-1392		913/888-7800		FAX: 913/888-7868		OFFICE LOCATIONS:		TULSA, OK		MACON, MO		NORTH KANSAS CITY, MO		LENEXA, KS	
SHAVER, KLINE & WARREN, INC.		11250 Corporate Avenue, Lenexa, KS 66219-1392		913/888-7800		FAX: 913/888-7868		OFFICE LOCATIONS:		TULSA, OK		MACON, MO		NORTH KANSAS CITY, MO		LENEXA, KS	
SHAVER, KLINE & WARREN, INC.		11250 Corporate Avenue, Lenexa, KS 66219-1392		913/888-7800		FAX: 913/888-7868		OFFICE LOCATIONS:		TULSA, OK		MACON, MO		NORTH KANSAS CITY, MO		LENEXA, KS	
SHAVER, KLINE & WARREN, INC.		11250 Corporate Avenue, Lenexa, KS 66219-1392		913/888-7800		FAX: 913/888-7868		OFFICE LOCATIONS:		TULSA, OK		MACON, MO		NORTH KANSAS CITY, MO		LENEXA, KS	
SHAVER, KLINE & WARREN, INC.		11250 Corporate Avenue, Lenexa, KS 66219-1392		913/888-7800		FAX: 913/888-7868		OFFICE LOCATIONS:		TULSA, OK		MACON, MO		NORTH KANSAS CITY, MO		LENEXA, KS	
SHAVER, KLINE & WARREN, INC.		11250 Corporate Avenue, Lenexa, KS 66219-1392		913/888-7800		FAX: 913/888-7868		OFFICE LOCATIONS:		TULSA, OK		MACON, MO		NORTH KANSAS CITY, MO		LENEXA, KS	
SHAVER, KLINE & WARREN, INC.		11250 Corporate Avenue, Lenexa, KS 66219-1392		913/888-7800		FAX: 913/888-7868		OFFICE LOCATIONS:		TULSA, OK		MACON, MO		NORTH KANSAS CITY, MO		LENEXA, KS	
SHAVER, KLINE & WARREN, INC.		11250 Corporate Avenue, Lenexa, KS 66219-1392		913/888-7800		FAX: 913/888-7868		OFFICE LOCATIONS:		TULSA, OK		MACON, MO		NORTH KANSAS CITY, MO		LENEXA, KS	
SHAVER, KLINE & WARREN, INC.		11250 Corporate Avenue, Lenexa, KS 66219-1392		913/888-7800		FAX: 913/888-7868		OFFICE LOCATIONS:		TULSA, OK		MACON, MO		NORTH KANSAS CITY, MO		LENEXA, KS	
SHAVER, KLINE & WARREN, INC.		11250 Corporate Avenue, Lenexa, KS 66219-1392		913/888-7800		FAX: 913/888-7868		OFFICE LOCATIONS:		TULSA, OK		MACON, MO		NORTH KANSAS CITY, MO		LENEXA, KS	
SHAVER, KLINE & WARREN, INC.		11250 Corporate Avenue, Lenexa, KS 66219-1392		913/888-7800		FAX: 913/888-7868		OFFICE LOCATIONS:		TULSA, OK		MACON, MO		NORTH KANSAS CITY, MO		LENEXA, KS	
SHAVER, KLINE & WARREN, INC.		11250 Corporate Avenue, Lenexa, KS 66219-1392		913/888-7800		FAX: 913/888-7868		OFFICE LOCATIONS:		TULSA, OK		MACON, MO		NORTH KANSAS CITY, MO		LENEXA, KS	
SHAVER, KLINE & WARREN, INC.		11250 Corporate Avenue, Lenexa, KS 66219-1392		913/888-7800		FAX: 913/888-7868		OFFICE LOCATIONS:		TULSA, OK		MACON, MO		NORTH KANSAS CITY, MO		LENEXA, KS	
SHAVER, KLINE & WARREN, INC.		11250 Corporate Avenue, Lenexa, KS 66219-1392		913/888-7800		FAX: 913/888-7868		OFFICE LOCATIONS:		TULSA, OK		MACON, MO		NORTH KANSAS CITY, MO		LENEXA, KS	
SHAVER, KLINE & WARREN, INC.		11250 Corporate Avenue, Lenexa, KS 66219-1392		913/888-7800		FAX: 913/888-7868		OFFICE LOCATIONS:		TULSA, OK		MACON, MO		NORTH KANSAS CITY, MO		LENEXA, KS	
SHAVER, KLINE & WARREN, INC.		11250 Corporate Avenue, Lenexa, KS 66219-1392		913/888-7800		FAX: 913/888-7868		OFFICE LOCATIONS:		TULSA, OK		MACON, MO		NORTH KANSAS CITY, MO		LENEXA, KS	
SHAVER, KLINE & WARREN, INC.		11250 Corporate Avenue, Lenexa, KS 66219-1392		913/888-7800		FAX: 913/888-7868		OFFICE LOCATIONS:		TULSA, OK		MACON, MO		NORTH KANSAS CITY, MO		LENEXA, KS	
SHAVER, KLINE & WARREN, INC.		11250 Corporate Avenue, Lenexa, KS 66219-1392		913/888-7800		FAX: 913/888-7868		OFFICE LOCATIONS:		TULSA, OK		MACON, MO		NORTH KANSAS CITY, MO		LENEXA, KS	
SHAVER, KLINE & WARREN, INC.		11250 Corporate Avenue, Lenexa, KS 66219-1392		913/888-7800		FAX: 913/888-7868		OFFICE LOCATIONS:		TULSA, OK		MACON, MO		NORTH KANSAS CITY, MO		LENEXA, KS	
SHAVER, KLINE & WARREN, INC.		11250 Corporate Avenue, Lenexa, KS 66219-1392		913/888-7800		FAX: 913/888-7868		OFFICE LOCATIONS:		TULSA, OK		MACON, MO		NORTH KANSAS CITY, MO		LENEXA, KS	
SHAVER, KLINE & WARREN, INC.		11250 Corporate Avenue, Lenexa, KS 66219-1392		913/888-7800		FAX: 913/888-7868		OFFICE LOCATIONS:		TULSA, OK		MACON, MO		NORTH KANSAS CITY, MO		LENEXA, KS	
SHAVER, KLINE & WARREN, INC.		11250 Corporate Avenue, Lenexa, KS 66219-1392		913/888-7800		FAX: 913/888-7868		OFFICE LOCATIONS:		TULSA, OK		MACON, MO		NORTH KANSAS CITY, MO		LENEXA, KS	
SHAVER, KLINE & WARREN, INC.		11250 Corporate Avenue, Lenexa, KS 66219-1392		913/888-7800		FAX: 913/888-7868		OFFICE LOCATIONS:		TULSA, OK		MACON, MO		NORTH KANSAS CITY, MO		LENEXA, KS	
SHAVER, KLINE & WARREN, INC.		11250 Corporate Avenue, Lenexa, KS 66219-1392		913/888-7800		FAX: 913/888-7868		OFFICE LOCATIONS:		TULSA, OK		MACON, MO		NORTH KANSAS CITY, MO		LENEXA, KS	
SHAVER, KLINE & WARREN, INC.		11250 Corporate Avenue, Lenexa, KS 66219-1392		913/888-7800		FAX: 913/888-7868		OFFICE LOCATIONS:		TULSA, OK		MACON, MO		NORTH KANSAS CITY, MO		LENEXA, KS	
SHAVER, KLINE & WARREN, INC.		11250 Corporate Avenue, Lenexa, KS 66219-1392		913/888-7800		FAX: 913/888-7868		OFFICE LOCATIONS:		TULSA, OK		MACON, MO		NORTH KANSAS CITY, MO		LENEXA, KS	
SHAVER, KLINE & WARREN, INC.		11250 Corporate Avenue, Lenexa, KS 66219-1392		913/888-7800		FAX: 913/888-7868		OFFICE LOCATIONS:		TULSA, OK		MACON, MO		NORTH KANSAS CITY, MO		LENEXA, KS	
SHAVER, KLINE & WARREN, INC.		11250 Corporate Avenue, Lenexa, KS 66219-1392		913/888-7800		FAX: 913/888-7868		OFFICE LOCATIONS:		TULSA, OK		MACON, MO		NORTH KANSAS CITY, MO		LENEXA, KS	
SHAVER, KLINE & WARREN, INC.		11250 Corporate Avenue, Lenexa, KS 66219-1392		913/888-7800		FAX: 913/888-7868		OFFICE LOCATIONS:		TULSA, OK		MACON, MO		NORTH KANSAS CITY, MO		LENEXA, KS	
SHAVER, KLINE & WARREN, INC.		11250 Corporate Avenue, Lenexa, KS 66219-1392		913/888-7800		FAX: 913/888-7868		OFFICE LOCATIONS:		TULSA, OK		MACON, MO		NORTH KANSAS CITY, MO		LENEXA, KS	
SHAVER, KLINE & WARREN, INC.		11250 Corporate Avenue, Lenexa, KS 66219-1392		913/888-7800		FAX: 913/888-7868		OFFICE LOCATIONS:		TULSA, OK		MACON, MO		NORTH KANSAS CITY, MO		LENEXA, KS	
SHAVER, KLINE & WARREN, INC.		11250 Corporate Avenue, Lenexa, KS 66219-1392		913/888-7800		FAX: 913/888-7868		OFFICE LOCATIONS:		TULSA, OK		MACON, MO		NORTH KANSAS CITY, MO		LENEXA, KS	
SHAVER, KLINE & WARREN, INC.		11250 Corporate Avenue, Lenexa, KS 66219-1392		913/888-7800		FAX: 913/888-7868		OFFICE LOCATIONS:		TULSA, OK		MACON, MO		NORTH KANSAS CITY, MO		LENEXA, KS	
SHAVER, KLINE & WARREN, INC.		11250 Corporate Avenue, Lenexa, KS 66219-1392		913/888-7800		FAX: 913/888-7868		OFFICE LOCATIONS:		TULSA, OK		MACON, MO		NORTH KANSAS CITY, MO		LENEXA, KS	
SHAVER, KLINE & WARREN, INC.		11250 Corporate Avenue, Lenexa, KS 66219-1392		913/888-7800		FAX: 913/888-7868		OFFICE LOCATIONS:		TULSA, OK		MACON, MO		NORTH KANSAS CITY, MO		LENEXA, KS	
SHAVER, KLINE & WARREN, INC.		11250 Corporate Avenue, Lenexa, KS 66219-1392		913/888-7800		FAX: 913/888-7868		OFFICE LOCATIONS:		TULSA, OK		MACON, MO		NORTH KANSAS CITY, MO		LENEXA, KS	
SHAVER, KLINE & WARREN, INC.		11250 Corporate Avenue, Lenexa, KS 66219-1392		913/888-7800		FAX: 913/888-7868		OFFICE LOCATIONS:		TULSA, OK		MACON, MO		NORTH KANSAS CITY, MO		LENEXA, KS	
SHAVER, KLINE & WARREN, INC.		11250 Corporate Avenue, Lenexa, KS 66219-1392		913/888-7800		FAX: 913/888-7868		OFFICE LOCATIONS:		TULSA, OK		MACON, MO		NORTH KANSAS CITY, MO		LENEXA, KS	
SHAVER, KLINE & WARREN, INC.		11250 Corporate Avenue, Lenexa, KS 66219-1392		913/888-7800		FAX: 913/888-7868		OFFICE LOCATIONS:		TULSA, OK		MACON, MO		NORTH KANSAS CITY, MO		LENEXA, KS	
SHAVER, KLINE & WARREN, INC.		11250 Corporate Avenue, Lenexa, KS 66219-1392		913/888-7800		FAX: 913/888-7868		OFFICE LOCATIONS:		TULSA, OK		MACON, MO		NORTH KANSAS CITY, MO		LENEXA, KS	
SHAVER, KLINE & WARREN, INC.		11250 Corporate Avenue, Lenexa, KS 66219-1392		913/888-7800		FAX: 913/888-7868		OFFICE LOCATIONS:		TULSA, OK		MACON, MO		NORTH KANSAS CITY, MO		LENEXA, KS	
SHAVER, KLINE & WARREN, INC.		11250 Corporate Avenue, Lenexa, KS 66219-1392		913/888-7800		FAX: 913/888-7868		OFFICE LOCATIONS:		TULSA, OK		MACON, MO		NORTH KANSAS CITY, MO		LENEXA, KS	
SHAVER, KLINE & WARREN, INC.		11250 Corporate Avenue, Lenexa, KS 66219-1392		913/888-7800		FAX: 913/888-7868		OFFICE LOCATIONS:		TULSA, OK		MACON, MO		NORTH KANSAS CITY, MO		LENEXA, KS	
SHAVER, KLINE & WARREN, INC.		11250 Corporate Avenue, Lenexa, KS 66219-1392		913/888-7800		FAX: 913/888-7868		OFFICE LOCATIONS:		TULSA, OK		MACON, MO		NORTH KANSAS CITY, MO		LENEXA, KS	
SHAVER, KLINE & WARREN, INC.		11250 Corporate Avenue, Lenexa, KS 66219-1392		913/888-7800		FAX: 913/888-7868		OFFICE LOCATIONS:		TULSA, OK		MACON, MO		NORTH KANSAS CITY, MO		LENEXA, KS	
SHAVER, KLINE & WARREN, INC.		11250 Corporate Avenue, Lenexa, KS 66219-1392		913/888-7800		FAX: 913/888-7868		OFFICE LOCATIONS:		TULSA, OK		MACON, MO		NORTH KANSAS CITY, MO		LENEXA, KS	
SHAVER, KLINE & WARREN, INC.																	

1. ALL WORK SHALL CONFORM WITH THE NATIONAL ELECTRICAL CODE AND ALL STATE AND LOCAL CODES AND ORDINANCES AND O.S.H.A. WHERE MINIMUM CODE REQUIREMENTS ARE EXCEEDED BY THE REQUIREMENTS INDICATED IN THE SPECIFICATIONS AND ON THESE DRAWINGS, THE DRAWINGS AND SPECIFICATIONS SHALL TAKE PRECEDENCE. (IN THE CASE OF CODE CONFLICT DIRECTION SHALL BE TAKEN FROM THE MORE STRICT OF THE CONFLICTING CODES).

3. FOR ANY DISRUPTION OF THE ELECTRICAL SERVICE TO THE BUILDING, THE CONTRACTOR SHALL PROVIDE TWO WEEKS NOTICE TO THE OWNER.

5. VERIFY ALL CONDUIT INTERIORS ARE CLEAN AND FREE OF DEBRIS BEFORE PULLING CONDUCTORS.

7. FIELD VERIFY EXACT LOCATION OF ALL WALL PENETRATIONS WITH OWNER'S REPRESENTATIVE PRIOR TO ROUGH-IN INSTALLATION.

8. ALL ELECTRICAL DEVICES IN PUBLIC AREAS SHALL BE MOUNTED PER A.D.A. REQUIREMENTS.

9. OPENINGS SHALL BE CUT TO THE EXACT SIZE
REQUIRED IN ORDER TO MAINTAIN ANY MATERIAL RATINGS
AND SEALED TO MAINTAIN RATING.

11. ELECTRICAL DESIGN HAS BEEN BASED ON THE INSTALLATION OF 75 DEGREES C CONDUCTORS CONNECTED TO TERMINAL LUGS & EQUIPMENT, U.L. LISTED AND LABELED FOR A MINIMUM OF 75 DEGREES C. CONDUCTORS TERMINATED ON EQUIPMENT WITH A LOWER RATING (60 DEGREES C) OR NO RATING SHOWN, SHALL HAVE CONDUCTOR SIZE INCREASED TO CONFORM TO N.E.C. TABLE 310-16 & U.L. NO. 489 REQUIREMENTS.

12. INSTALL ANY/ALL CORD SETS SUPPLIED WITH THE EQUIPMENT.

13. ALL EXTERIOR MOUNTED ELECTRICAL DEVICES AND EQUIPMENT SHALL BE IN WEATHERPROOF ENCLOSURE AND U.L. LISTED FOR WET LOCATION AND NEMA 4X LISTED AND EXPLOSION PROOF RATED. DEVICES SHALL BE APPLETON OR APPROVED EQUAL.

14. PROVIDE FIRESTOPPING TO MAINTAIN FIRE RATINGS AT ALL PENETRATIONS OF RATED CONSTRUCTION.

16. PROVIDE ALL NECESSARY WALL CUTTING/PENETRATIONS AND ALL OF THE REPATCHING NECESSARY FOR THE PROPER EXECUTION OF THIS WORK.

17. ALL SAFETY DISCONNECT SWITCHES SHALL BE HEAVY-DUTY GRADE, SQUARE D OR APPROVED EQUAL.

18. ALL SAFETY SWITCHES SHALL HAVE A DURABLE LABEL PERMANENTLY ATTACHED TO THE INSIDE COVER DESCRIBING TYPE, CURRENT LIMITING ABILITY AND DEVICES CONTROLLED.

19. ALL SAFETY SWITCHES SHALL HAVE A GROUNDING BAR.

GROUNDING CONDUCTOR INSTALLED. IN NO CASE SHALL THE CONDUIT OR RACEWAY BE USED AS THE GROUNDING CONDUCTOR.

21. CONDUCTORS SHALL BE COPPER, THHN/THWN, 75 DEG C, SOUTHWIRE OR APPROVED EQUAL.

22. BELOW GRADE CONDUIT IN GRASSY AREAS SHALL BE SCHEDULE 40, ALLIED TUBE & CONDUIT OR APPROVED EQUAL.

23. BELOW GRADE CONDUIT IN GRAVEL AREAS SHALL BE PVC COATED RGS WITH THREADED SEALED FITTINGS, ALLIED TUBE & CONDUIT OR APPROVED EQUAL.

24. EXTERIOR EXPOSED CONDUIT SHALL BE RGS WITH
THREADED SEALED FITTINGS, ALLIED TUBE & CONDUIT OR
APPROVED EQUAL.

25. INTERIOR EXPOSED CONDUIT SHALL BE EMT WITH COMPRESSION FITTINGS, ALLIED TUBE & CONDUIT OR APPROVED EQUAL.

26. CIRCUIT BREAKERS SHALL BE OF SAME MANUFACTURER AND AIC RATING AS EXISTING PANELBOARDS.



NOTES:

1. STRUT PRODUCT NUMBERS SHOWN ARE BY UNISTRUT CORP.
2. ALL HARDWARE AND STRUT SHALL BE STAINLESS STEEL


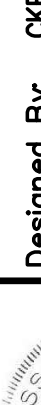


NOTE: PROVIDE QUANTITY OF CONDUITS AND CONDUCTORS
AS INDICATED ON SHEET E-1.



NOT TO SCALE



1502558-010 SHEET NO.		NASHUA MODOT MAINTENANCE FACILITY KANSAS CITY, MISSOURI		 SHAFER, KLINE & WARREN, INC. 11250 Corporate Avenue, Lenexa, KS 66219-1392 913/888-7800 FAX: 913/888-7868 OFFICE LOCATIONS: DUBUQUE, IA HOUSTON, TX LENEXA, KS MACON, MO NORTH KANSAS CITY, MO TULSA, OK				Designed By: <u>CKB</u> Drawn By: <u>CKB</u> Checked By: <u>TRW</u> Issue Date: <u>9-17-2015</u> COPYRIGHT © 2015-SHAFER, KLINE & WARREN INC. MISSOURI CERTIFICATE OF AUTHORITY: 000143		CIVIL ENGINEERS ELECTRICAL ENGINEERS MECHANICAL ENGINEERS LANDSCAPE ARCHITECTS LAND SURVEYORS LAND PLANNERS	
		ELECTRICAL DETAIL PLAN				5 4 3 2 1		REV. DATE REVISIONS		BY APP'D	