

INDEX OF DRAWINGS

- 1 - 6 COVER SHEET
- 2 - 6 FLOOR PLAN
- 3 - 6 DETAILS
- 4 - 6 ELEVATIONS
- 5 - 6 ROOF FRAMING PLAN
- 6 - 6 WALL SECTIONS

CODE REQUIREMENTS

BUILDING CODE - CURRENT IBC

ALTERNATE CONDITIONS:

THE VARYING MAKEUP OF SOILS AND OCCURRENCE OF ROCK IN MANY MODOT DISTRICTS MAY REQUIRE CONSIDERABLE REDESIGN OF THE POST PLACEMENT BELOW GRADE FROM THAT SHOWN IN THESE DRAWINGS. THE BIDDER WILL BE RESPONSIBLE FOR OBTAINING ACCURATE INFORMATION FROM THE DISTRICTS FACILITIES MANAGER (I.E. DRILLINGS OR BORINGS INFORMATION 5'-0" DEEP AT EACH BUILDING CORNER AND AT LEAST ONE INTERMEDIATE SAMPLE TO THIS DEPTH ON THE LONG SIDES OF THE PROPOSED STRUCTURE) SO THAT THE BID WILL REFLECT ANY FOUNDATION REQUIREMENTS BEYOND THOSE SHOWN HERE. INFORMATION COULD INCLUDE PREVIOUS EXCAVATIONS THAT VERIFY FOOTING CONDITIONS THAT WILL BE ENCOUNTERED BY THIS CONTRACTOR.

MISSOURI DEPARTMENT  
OF TRANSPORTATION

150' x 50' POLE BARN  
1600 Christopher Drive, Mexico, Missouri 65265  
NORTHEAST DISTRICT  
Audrain County

REQUIRED BUILDING ELEMENTS:

- 2 x 4 WALL GIRTS - #2 SYP OR EQUAL.
- POSTS TO BE A MINIMUM OF 4'-0" BELOW GRADE IN COMPACTED SOIL.

FABRICATOR NOTES:

THESE DRAWINGS ARE FURNISHED AS A GUIDE TO BIDDERS IN SUBMITTING THE COMPLETE PACKAGE OF DETAILED DRAWINGS OF THEIR PROPOSED STRUCTURE TO BE SEALED BY AN ARCHITECT/ENGINEER. WHERE "AS REQUIRED" IS USED THE BIDDER MUST FURNISH A DETAILED DESCRIPTION OF THE BUILDING ELEMENT TO BE FURNISHED.

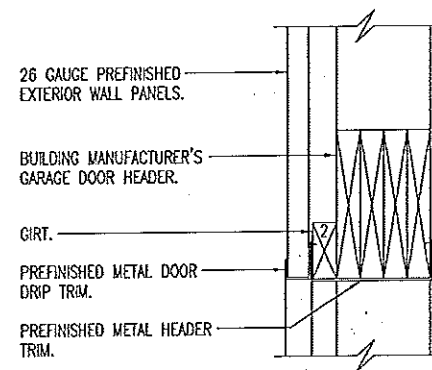
COVER SHEET

MISSOURI DEPARTMENT  
OF TRANSPORTATION  
DIVISION OF GENERAL SERVICES  
FACILITIES MANAGEMENT

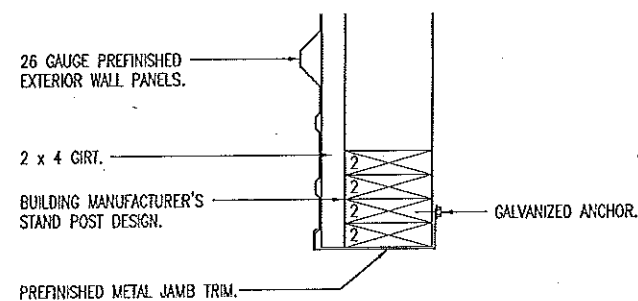
Mexico 150' x 50' Pole Barn  
1600 Christopher Drive, Mexico, MO 65265  
Northeast District - Audrain County

DESIGN BY: LARRY CARVER  
DRAWN BY: LARRY CARVER  
DATE: 4-17-15  
Sheet  
1 of 6





**A**  
**3** **GARAGE DOOR HEAD**  
SCALE: 1" = 1'-0"



**B**  
**3** **GARAGE DOOR JAMB**  
SCALE: 1" = 1'-0"

## CONCRETE NOTES

1. CONCRETE WORK SHALL BE EXECUTED IN STRICT COMPLIANCE WITH THE LATEST EDITION OF THE AMERICAN CONCRETE INSTITUTE (A.C.I.) MANUAL OF CONCRETE PRACTICE.
2. FOUNDATION DESIGN IS BASED UPON AN ASSUMED SOIL BEARING CAPACITY OF 2000 PSF. IF WET OR UNUSUAL SOIL CONDITIONS ARE ENCOUNTERED, NOTIFY THE DESIGNER AND CONSTRUCTION INSPECTOR BEFORE PROCEEDING WITH THE WORK.
3. IF CONDITIONS REQUIRING ROCK EXCAVATION ARE ENCOUNTERED, NOTIFY THE DESIGNER AND CONSTRUCTION INSPECTOR BEFORE PROCEEDING WITH THE WORK.
4. ALL CONCRETE SHALL BE TYPE 1 CEMENT WITH A COMPRESSIVE STRENGTH OF 4,000 PSI @ 28 DAYS AND NOT TO EXCEED 4" SLUMP.
5. MODOT TO STAKE CORNERS ON LEVEL SITE.

## CONTRACTOR NOTES

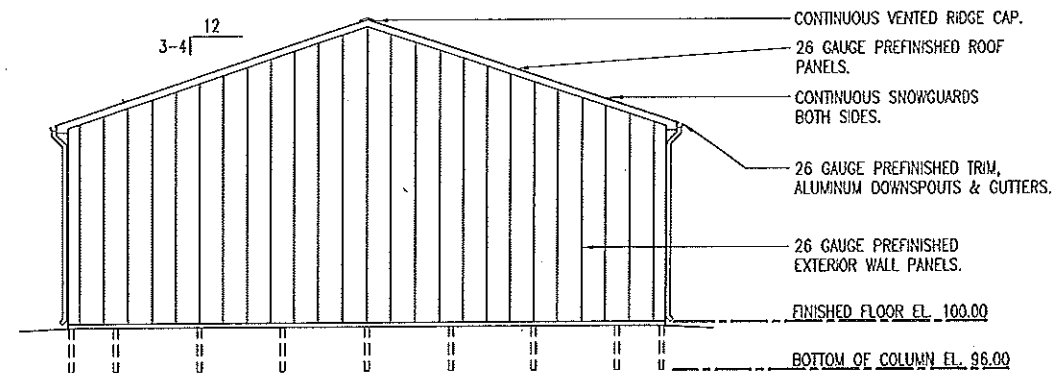
1. MODOT TO STAKE FOUR CORNERS OF BUILDING ON LEVEL SITE.
2. CONTRACTOR TO SLOPE FINISHED GRADE TO DRAIN AWAY FROM BUILDING ON THE FOUR SIDES WITH LIKE MATERIALS.

DETAILS

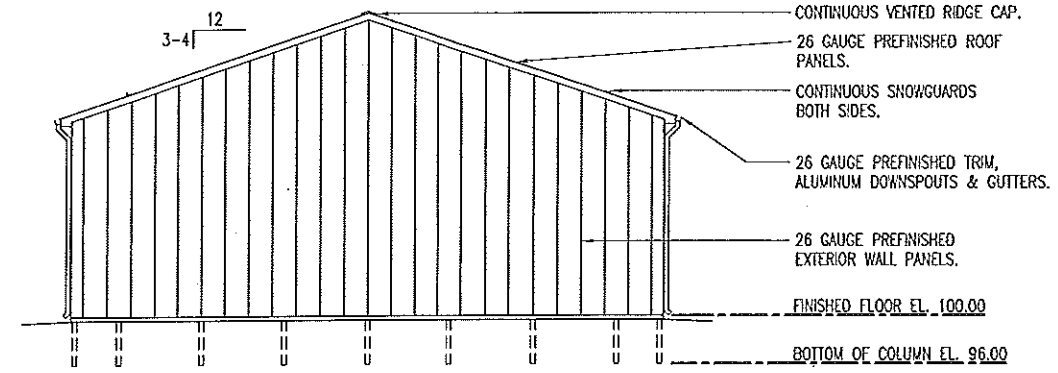
MISSOURI DEPARTMENT  
OF TRANSPORTATION  
DIVISION OF GENERAL SERVICES  
FACILITIES MANAGEMENT

Mexico 150' x 50' Pole Barn  
1600 Christopher Drive, Mexico, MO 65265  
Northeast District - Audrain County

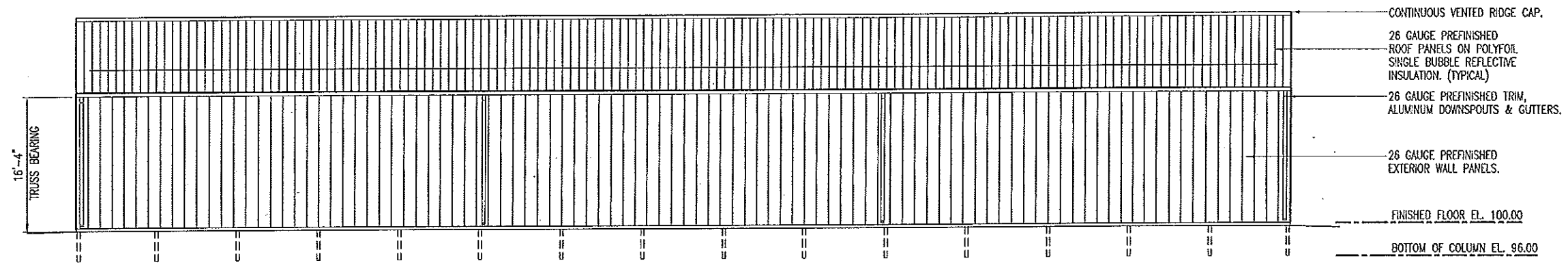
DESIGN BY: LARRY CARVER  
DRAWN BY: LARRY CARVER  
DATE: 4-17-15  
Sheet  
3 of 6



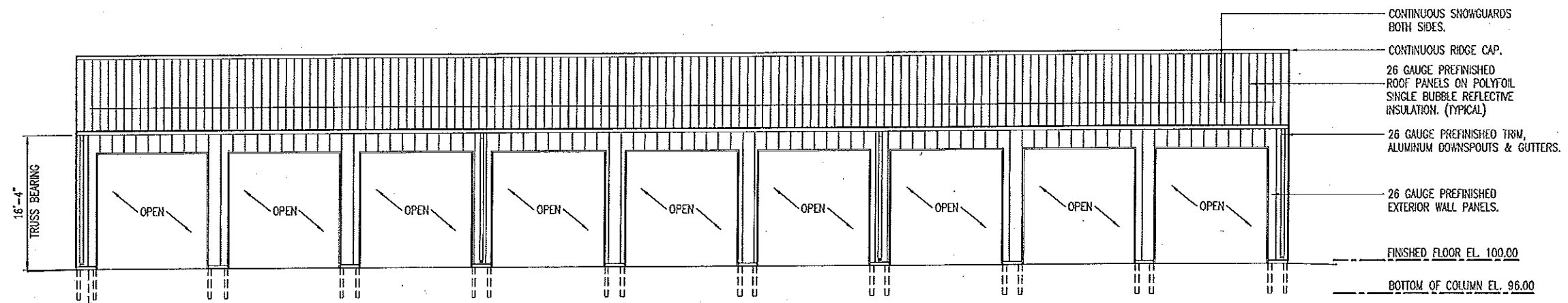
**C LEFT ELEVATION**  
SCALE: 1/16" = 1'-0"



**D RIGHT ELEVATION**  
SCALE: 1/16" = 1'-0"



**B REAR ELEVATION**  
SCALE: 1/16" = 1'-0"



**A FRONT ELEVATION**  
SCALE: 1/16" = 1'-0"

# ELEVATIONS

MISSOURI DEPARTMENT  
OF TRANSPORTATION  
DIVISION OF GENERAL SERVICES  
FACILITIES MANAGEMENT

Mexico 150' x 50' Pole Barn  
1600 Christopher Drive, Mexico, MO 65265  
Northeast District - Audrain County

DESIGN BY: LARRY CARVER  
DRAWN BY: LARRY CARVER  
DATE: 4-17-15  
Sheet  
4 of 6

## ROOF FRAMING NOTES

### 1. DESIGN LOADING FOR ROOF TRUSSES SHALL MEET THE FOLLOWING CRITERIA:

ROOF LIVE LOAD	25 PSF
ROOF DEAD LOAD	4 PSF
BOTTOM CORD DEAD LOAD	5 PSF
EARTHQUAKE	ZONE 1, LATEST EDITION IBC
WIND	90 MPH, EXPOSURE B
DEFLECTION	L/360
SPACING	10'-0" O.C.

### 2. TRUSS DESIGN SUBMITTALS SHALL BE SEALED AND SIGNED BY A PROFESSIONAL ENGINEER LICENSED IN THE STATE OF MISSOURI.

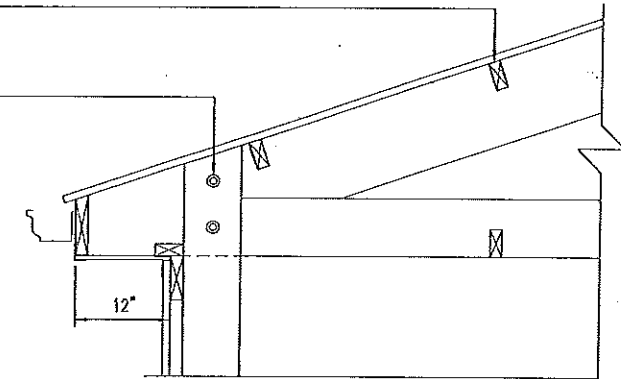
### 3. ROOF TRUSSES AND RAFTERS SHALL BE ANCHORED TO THE TOP PLATE OF LOAD BEARING WALLS WITH SEISMIC AND HURRICANE ANCHORS EQUAL TO SIMPSON STRONG-TIE LUS24Z ANCHORS AS REQUIRED. ANCHOR EACH 2x PURLINS TO TRUSSES WITH SIMPSON STRONG-TIE H1.

### 4. ROOF TRUSSES TO BE EACH CENTERED IN A POCKET WHICH IS THE DEPTH OF THE BOTTOM CHORD, MINIMUM, ON THE BACK WALL LAMINATED 2x POST(S) THAT ARE 10'-0" O.C. (TYPICAL) SEE DETAIL B-5.

2 x 4 PURLINS @ 24" O.C. ATTACH  
W/SIMPSON STRONG-TIE LUS24Z. (TYP.)

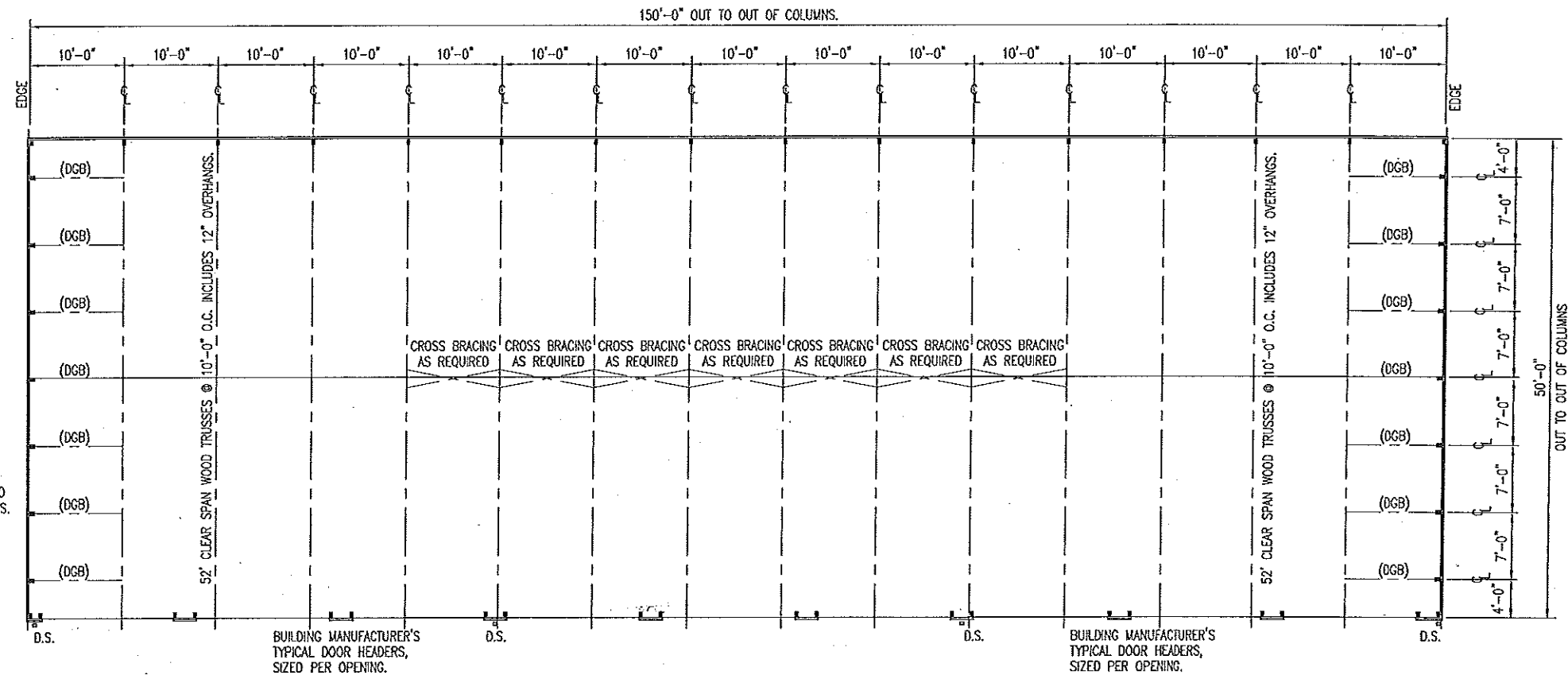
TRUSS SECURED IN COLUMN POCKET  
WITH (2) 1/2" x 5-1/2" H. BOLTS &  
(8) 16d THS NAILS. TRUSS SITS IN  
CENTER OF (3) LAMINATED 2 x 6's.  
(8) 16d THS NAILS. TYPICAL AT BOTH  
ENDS OF TRUSS.

**B** TRUSS POCKET  
5 SCALE: 1/2" = 1'-0"



(DGB) DIAGONAL GABLE  
BRACING AS REQUIRED.

NOTE:  
INSTALL BIRD NETTING TO  
BOTTOM OF THE TRUSSES.



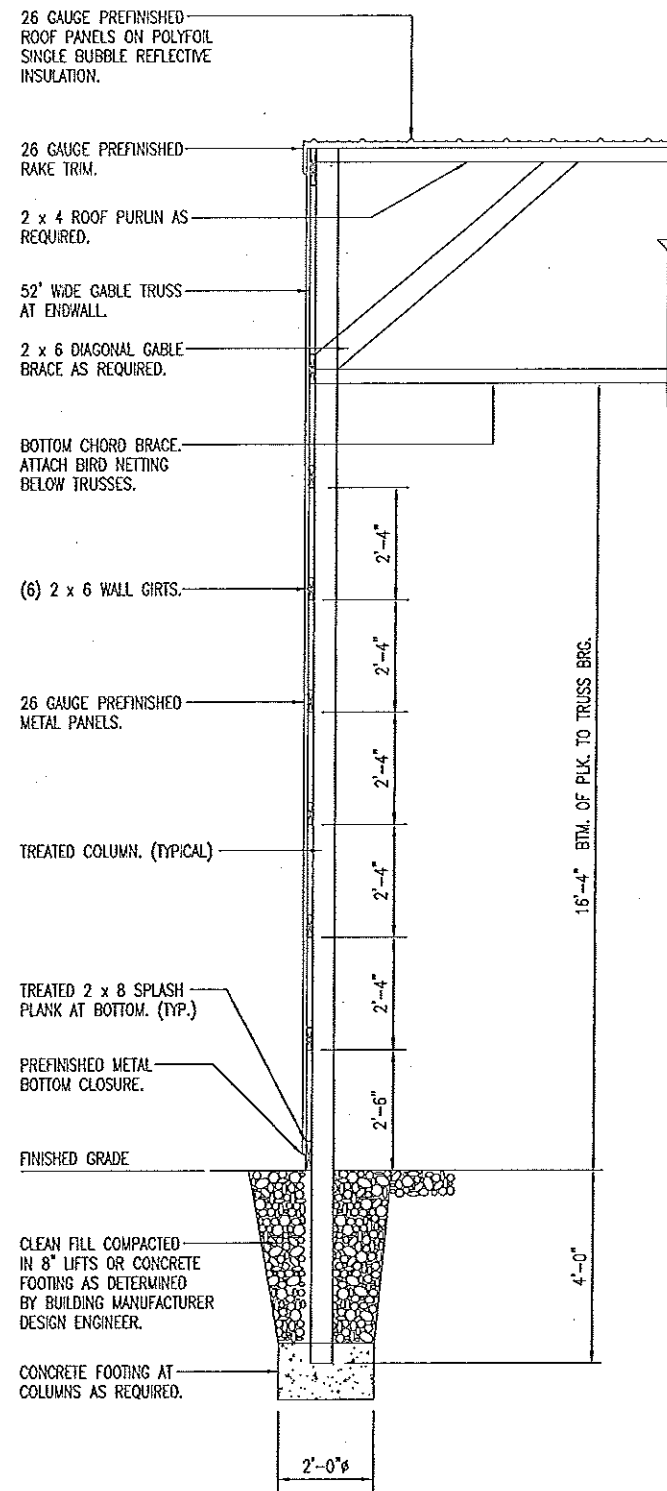
**A** ROOF FRAMING PLAN  
5 SCALE: 1/16" = 1'-0"

# ROOF FRAMING PLAN

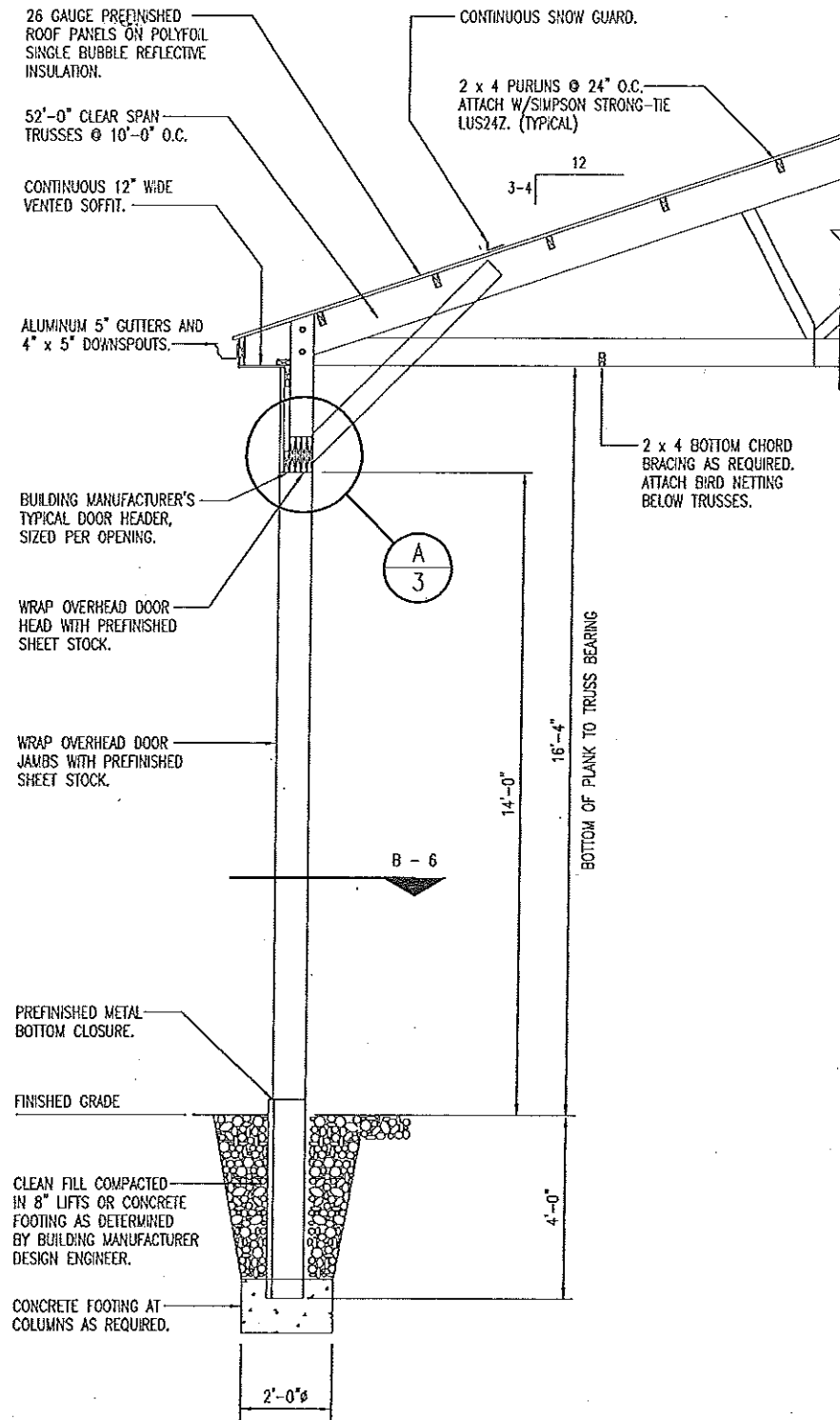
MISSOURI DEPARTMENT  
OF TRANSPORTATION  
DIVISION OF GENERAL SERVICES  
FACILITIES MANAGEMENT

Mexico 150' x 50' Pole Barn  
1600 Christopher Drive, Mexico, MO 65265  
Northeast District - Audrain County

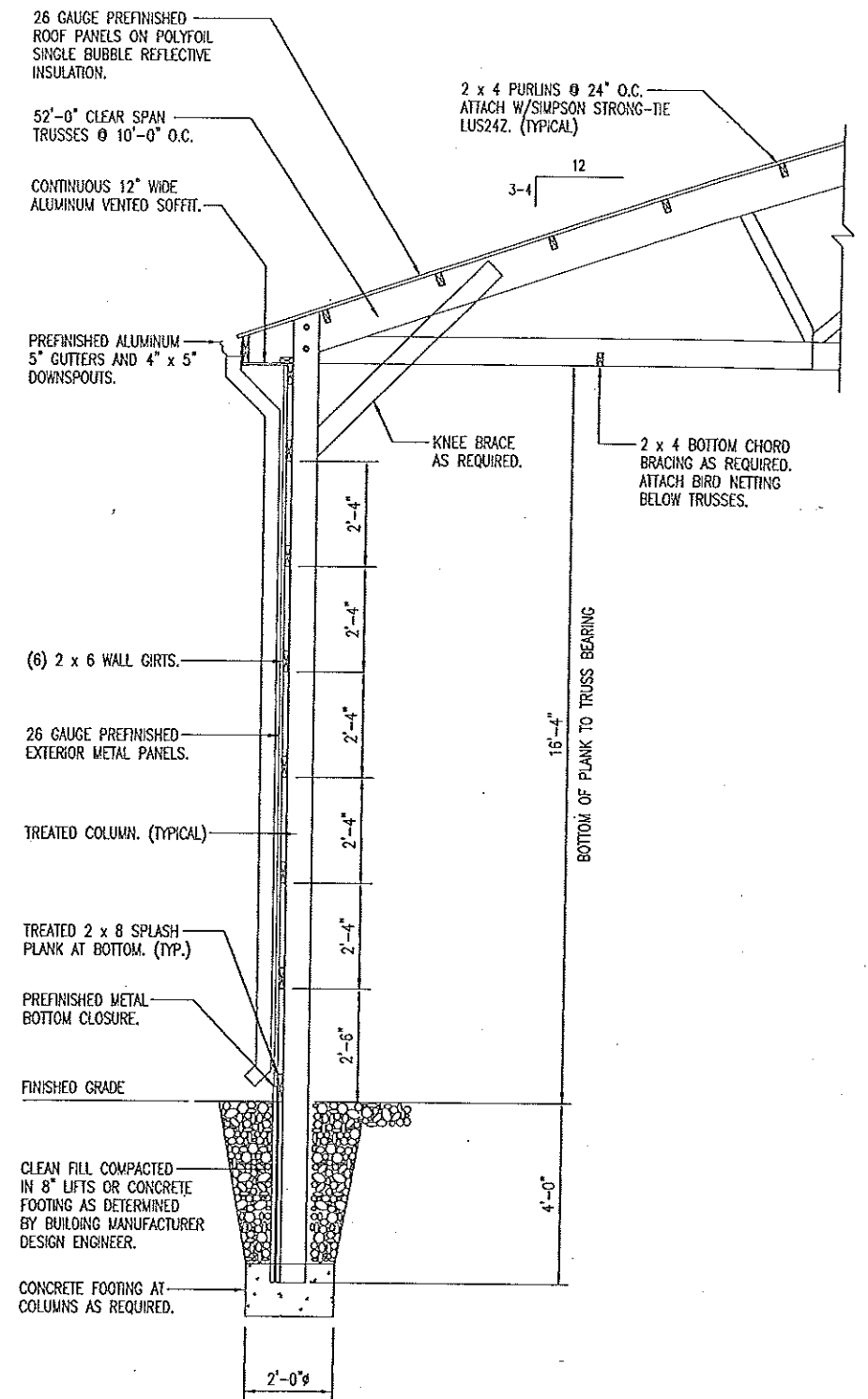
DESIGN BY: LARRY CARVER  
DRAWN BY: LARRY CARVER  
DATE: 4-17-15  
Sheet  
5 of 6



**A**  
6  
ENDWALL SECTION  
SCALE: 1/4" = 1'-0"



**B**  
6  
OVERHEAD DOOR SECTION  
SCALE: 1/4" = 1'-0"



**C**  
6  
SIDEWALL SECTION  
SCALE: 1/4" = 1'-0"

# WALL SECTIONS

MISSOURI DEPARTMENT  
OF TRANSPORTATION  
DIVISION OF GENERAL SERVICES  
FACILITIES MANAGEMENT

Mexico 150' x 50' Pole Barn  
1600 Christopher Drive, Mexico, MO 65265  
Northeast District - Audrain County

DESIGN BY: LARRY CARVER  
DRAWN BY: LARRY CARVER  
DATE: 4-17-15  
Sheet  
6 of 6