

INDEX OF DRAWINGS

- 1 -7 COVER SHEET
- 2 -7 CONCRETE PAD
- 3 -7 CONCRETE DETAILS
- 4 -7 FLOOR PLAN
- 5 -7 END WALL ELEVATION
- 6 -7 SIDE WALL ELEVATION
- 7 -7 SECTION

CODE REQUIREMENTS

BUILDING CODE - CURRENT IBC

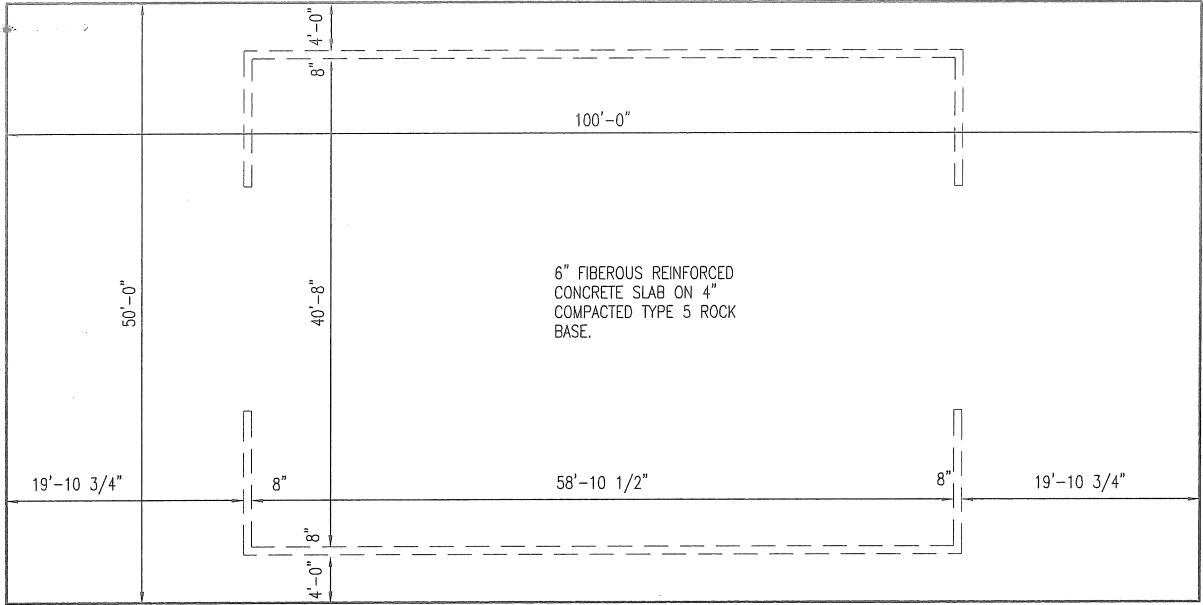
MISSOURI DEPARTMENT OF TRANSPORTATION  
NORTHEAST DISTRICT - KEYTESVILLE FABRIC SALT STRUCTURE  
220 EAST JACKSON, KEYTESVILLE, MO 65261  
CHARITON COUNTY

DESIGN BY LARRY CARVER  
DATE 4-29-16

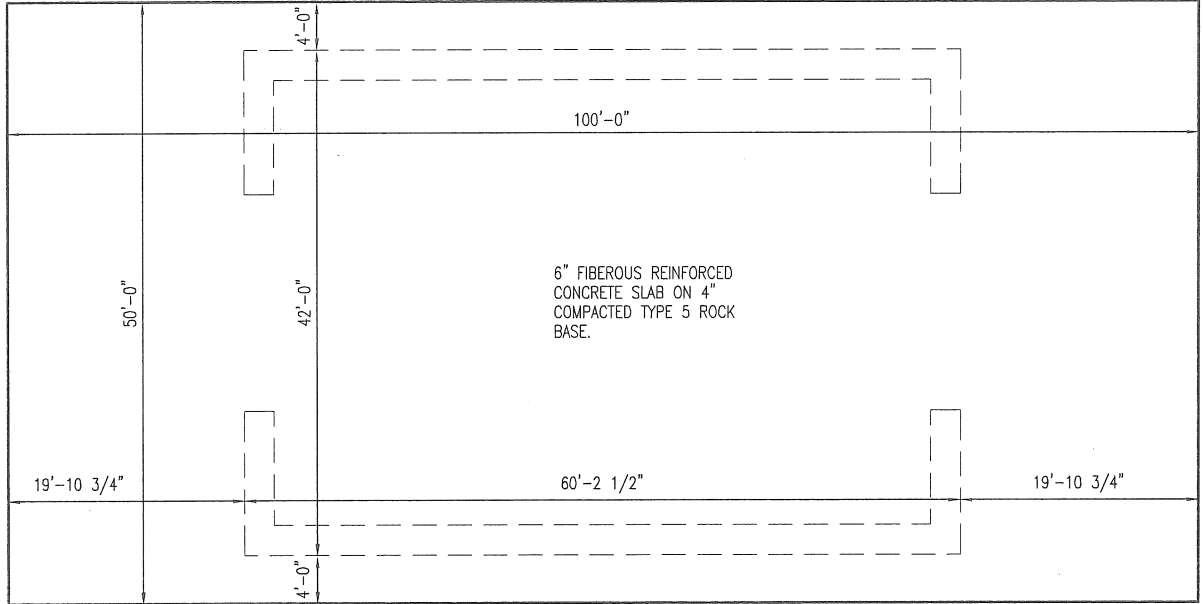
KEYTESVILLE FABRIC  
SALT STRUCTURE  
Keytesville, MO - Chariton County

MISSOURI DEPARTMENT  
OF TRANSPORTATION  
GENERAL SERVICES  
FACILITIES MANAGEMENT

COVER SHEET



OPTION #2  
**CONCRETE PAD WITH FOUNDATION WALL**  
SCALE: 1/16" = 1'-0"

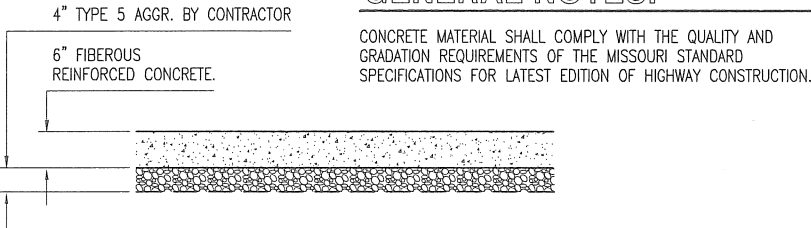


OPTION #1  
**CONCRETE PAD WITH LEGO BLOCKS**  
SCALE: 1/16" = 1'-0"

**CONCRETE/SITE NOTES**

1. CONCRETE WORK SHALL BE EXECUTED IN STRICT COMPLIANCE WITH THE LATEST EDITION OF THE AMERICAN CONCRETE INSTITUTE (A.C.I.) MANUAL OF CONCRETE PRACTICE.
2. CONTRACTOR SHALL ASSUME A SOIL BEARING CAPACITY OF 2000 PSF. IF WET OR UNUSUAL CONDITIONS ARE ENCOUNTERED, NOTIFY THE DESIGNER AND CONSTRUCTION INSPECTOR BEFORE PROCEEDING WITH THE WORK.
3. BUILDING LOCATION HAS BEEN STAKED AND EXCAVATED TO 10" BELOW FINISH GRADE.
4. ALL CONCRETE SHALL BE TYPE 1 CEMENT WITH A COMPRESSIVE STRENGTH OF 4,000 PSI @ 28 DAYS AND NOT TO EXCEED 4" SLUMP.
5. CONCRETE EXPOSED TO THE EXTERIOR SHALL RECEIVE AIR ENTRAINMENT 6% +/- 2%.
6. CONCRETE FLATWORK SHALL HAVE A LIGHT POWER TROWELED FINISH.
7. SAWED CONTROL JOINTS SHALL BE CUT @ 15'-0" O.C. EACH WAY x 2" DEEP, CLEANED FREE OF ALL DEBRIS AND FILLED WITH PRC PERMAPOL "RC-550" JOINT SEALANT OR APPROVED EQUAL SEALANT TO BE HELD DOWN 1/4" BELOW FINISHED SURFACE.
8. SEE SPECIFICATION SECTION 03300 CONCRETE FOR ADDITIONAL INFORMATION.
9. PROVIDE CORNER REINFORCING BARS WITH 12" MINIMUM LAP EQUAL IN SIZE AND GRADE TO CONNECTING BARS.
10. ALL CONCRETE FLOORS AND SLABS SHALL RECEIVE A CURING/SEALING FINISH PER THE SPECIFICATION SECTION 03346.
11. ALL CONCRETE FOUNDATION WALLS TO MONOLITHICALLY POURED.
12. DEFORMED STEEL REINFORCING BARS SHALL BE: #4 AND LARGER ASTM A615 GRADE 60.

**GENERAL NOTES:**

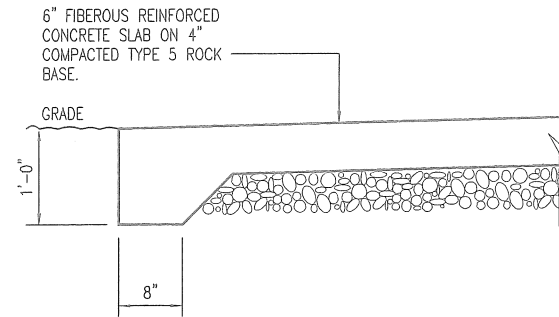


DESIGN BY LARRY CARVER  
DATE 4-22-16

KEYTESVILLE FABRIC  
SALT STRUCTURE  
Keytesville, MO - Chariton County

MISSOURI DEPARTMENT  
OF TRANSPORTATION  
GENERAL SERVICES  
FACILITIES MANAGEMENT

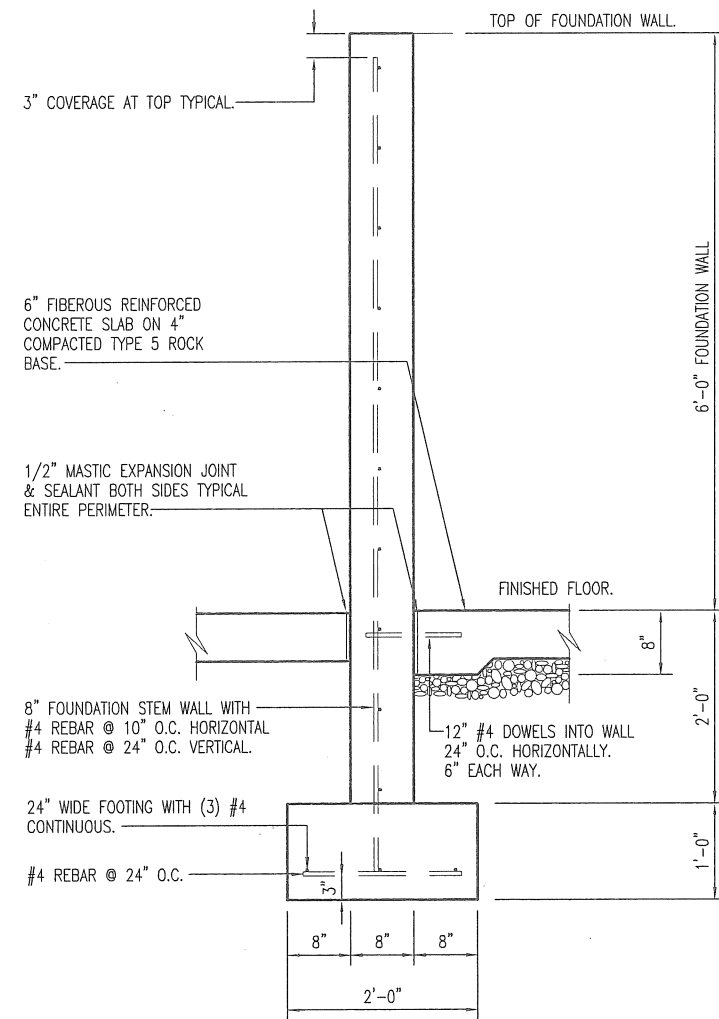
CONCRETE PAD



**B**  
3

**SLAB SECTION**

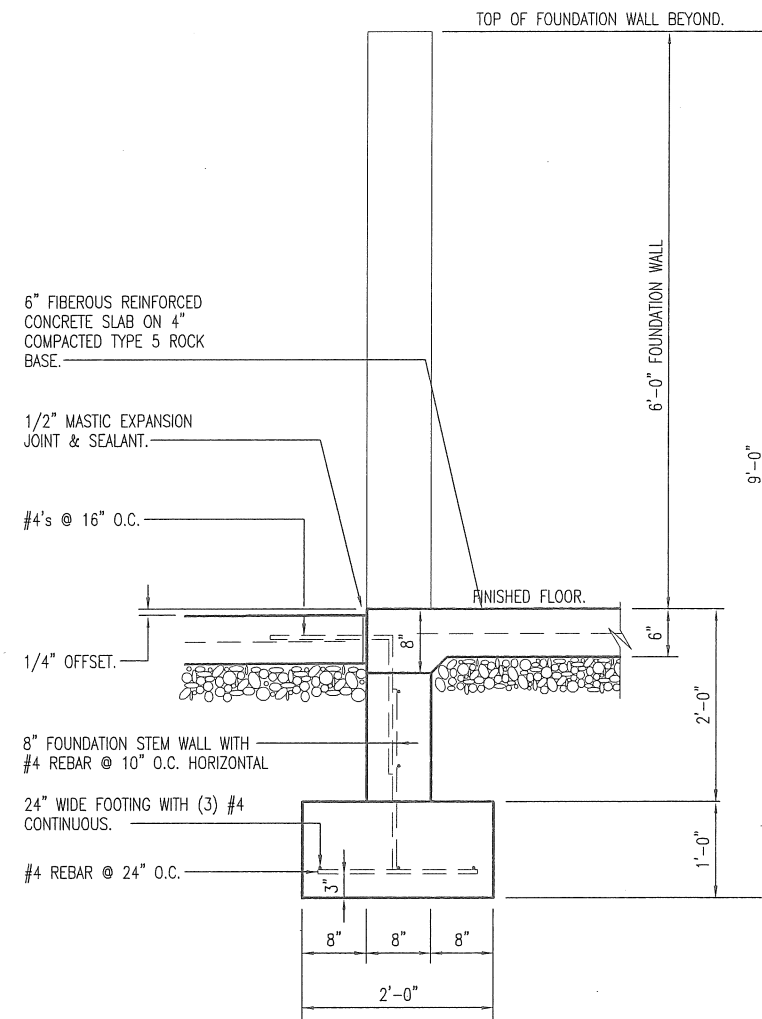
SCALE: 1/2" = 1'-0"



**A**  
3

**OPTION #2  
FOUNDATION WALL**

SCALE: 1/2" = 1'-0"



**C**  
3

**OPTION #2  
EXTERIOR FOUNDATION WALL @ DOOR**

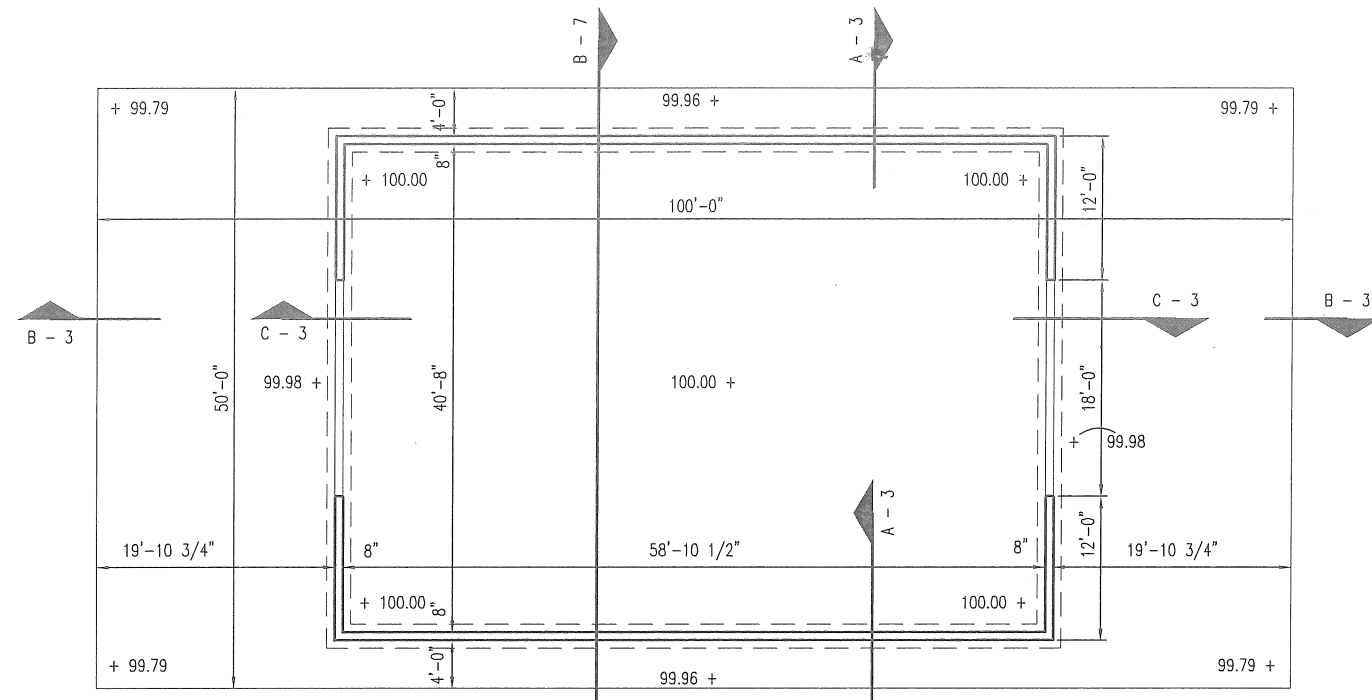
SCALE: 1/2" = 1'-0"

DESIGN BY LARRY CARVER  
DATE 4-22-16

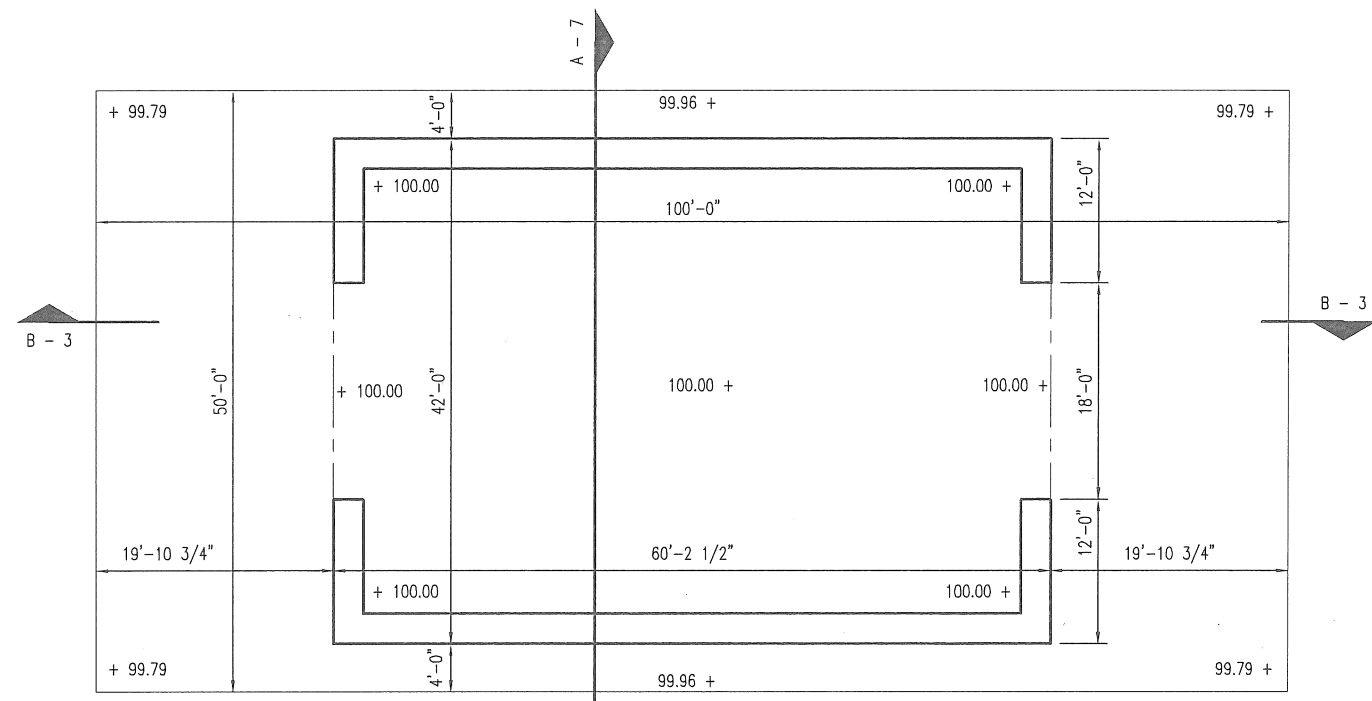
**KEYTESVILLE FABRIC  
SALT STRUCTURE**  
Keytesville, MO - Chariton County

**MISSOURI DEPARTMENT  
OF TRANSPORTATION**  
GENERAL SERVICES  
FACILITIES MANAGEMENT

**CONCRETE DETAILS**



OPTION #2  
**B**  
 4  
 FLOOR PLAN WITH FOUNDATION WALL  
 SCALE: 1/16" = 1'-0"



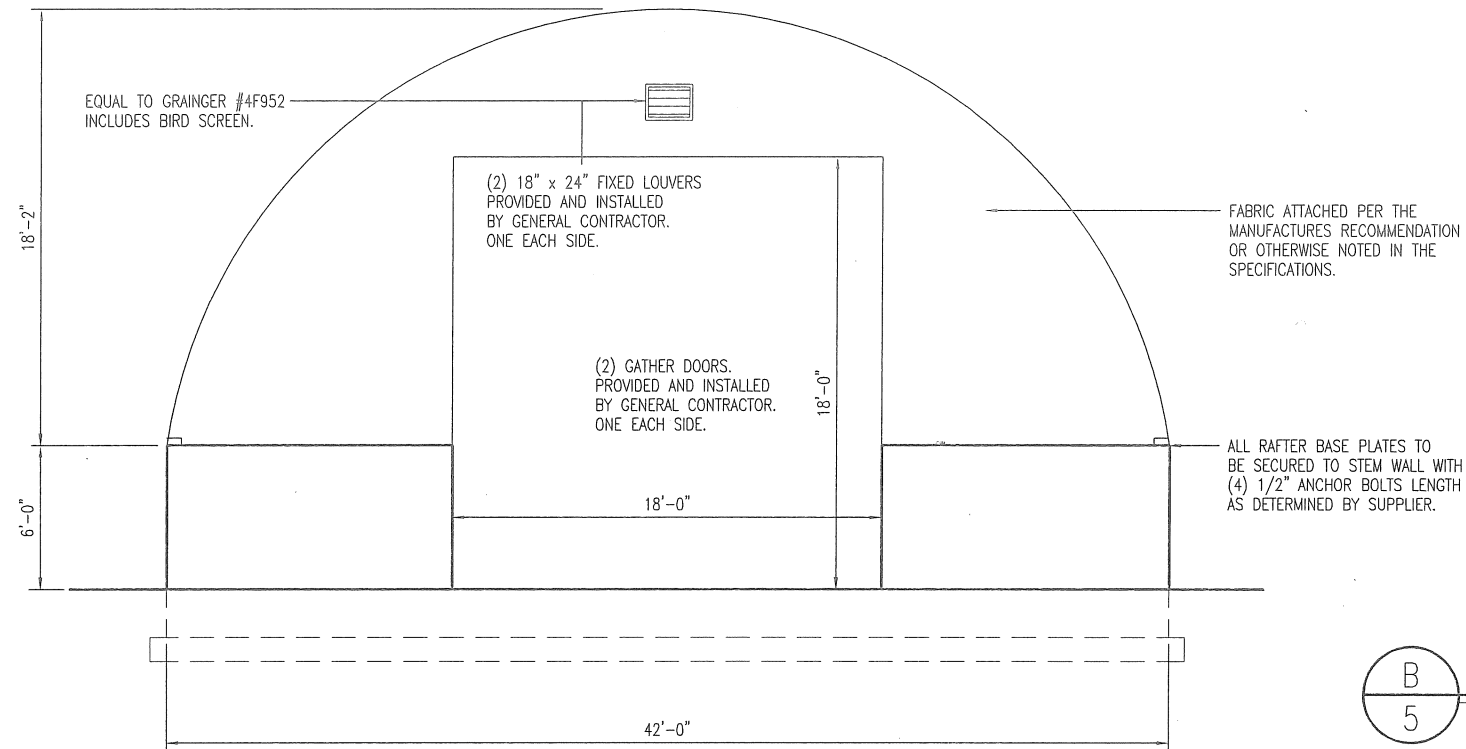
OPTION #1  
**A**  
 4  
 FLOOR PLAN WITH LEGO BLOCKS  
 SCALE: 1/16" = 1'-0"

DESIGN BY LARRY CARVER  
 DATE 4-22-16

KEYTESVILLE FABRIC  
 SALT STRUCTURE  
 Keytesville, MO - Chariton County

MISSOURI DEPARTMENT  
 OF TRANSPORTATION  
 GENERAL SERVICES  
 FACILITIES MANAGEMENT

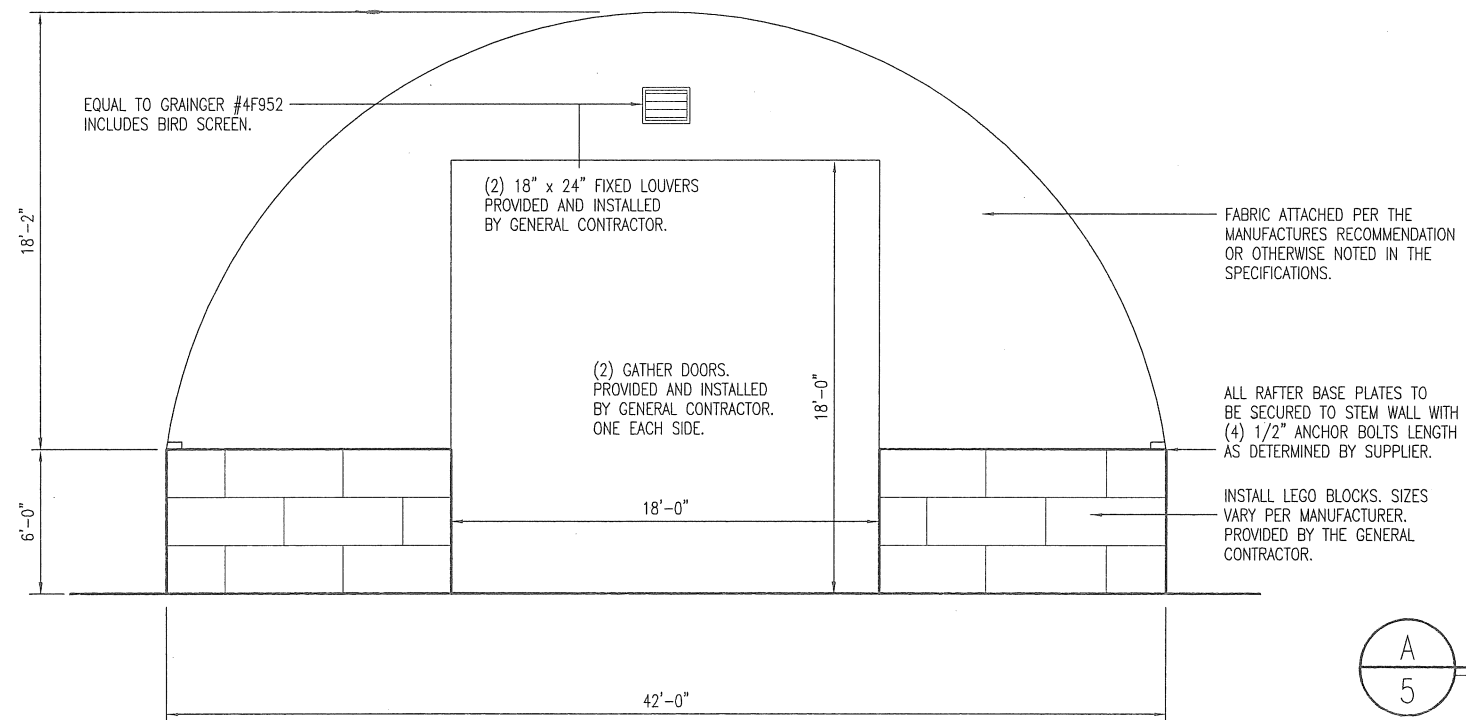
FLOOR PLAN



B  
5

OPTION #2 CONCRETE FOUNDATION WALL  
**END WALL ELEVATION**

SCALE: 1/8" = 1'-0"



A  
5

OPTION #1 LEGO BLOCKS  
**END WALL ELEVATION**

SCALE: 1/8" = 1'-0"

DESIGN BY LARRY CARVER  
DATE 4-29-16

KEYTESVILLE FABRIC  
SALT STRUCTURE  
Keytesville, MO - Chariton County

MISSOURI DEPARTMENT  
OF TRANSPORTATION  
GENERAL SERVICES  
FACILITIES MANAGEMENT

**END WALL ELEVATION**

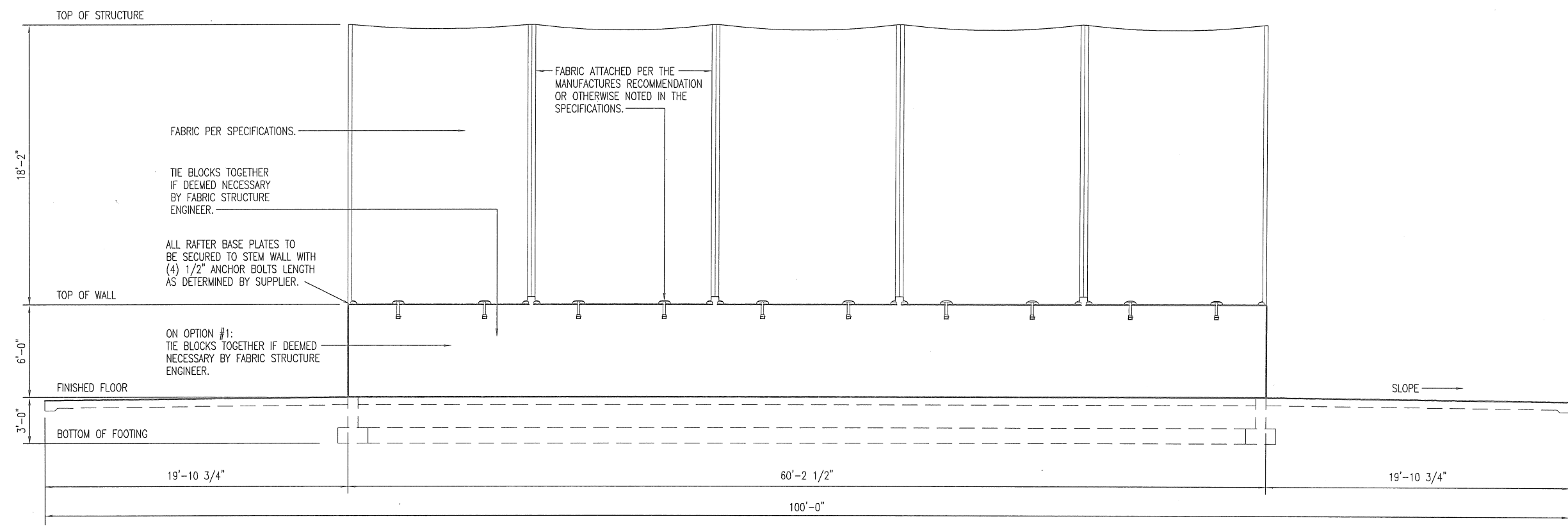
DESIGN BY LARRY CARVER  
DATE 4-29-16

KEYTESVILLE FABRIC  
SALT STRUCTURE  
Keytesville, MO - Chariton County

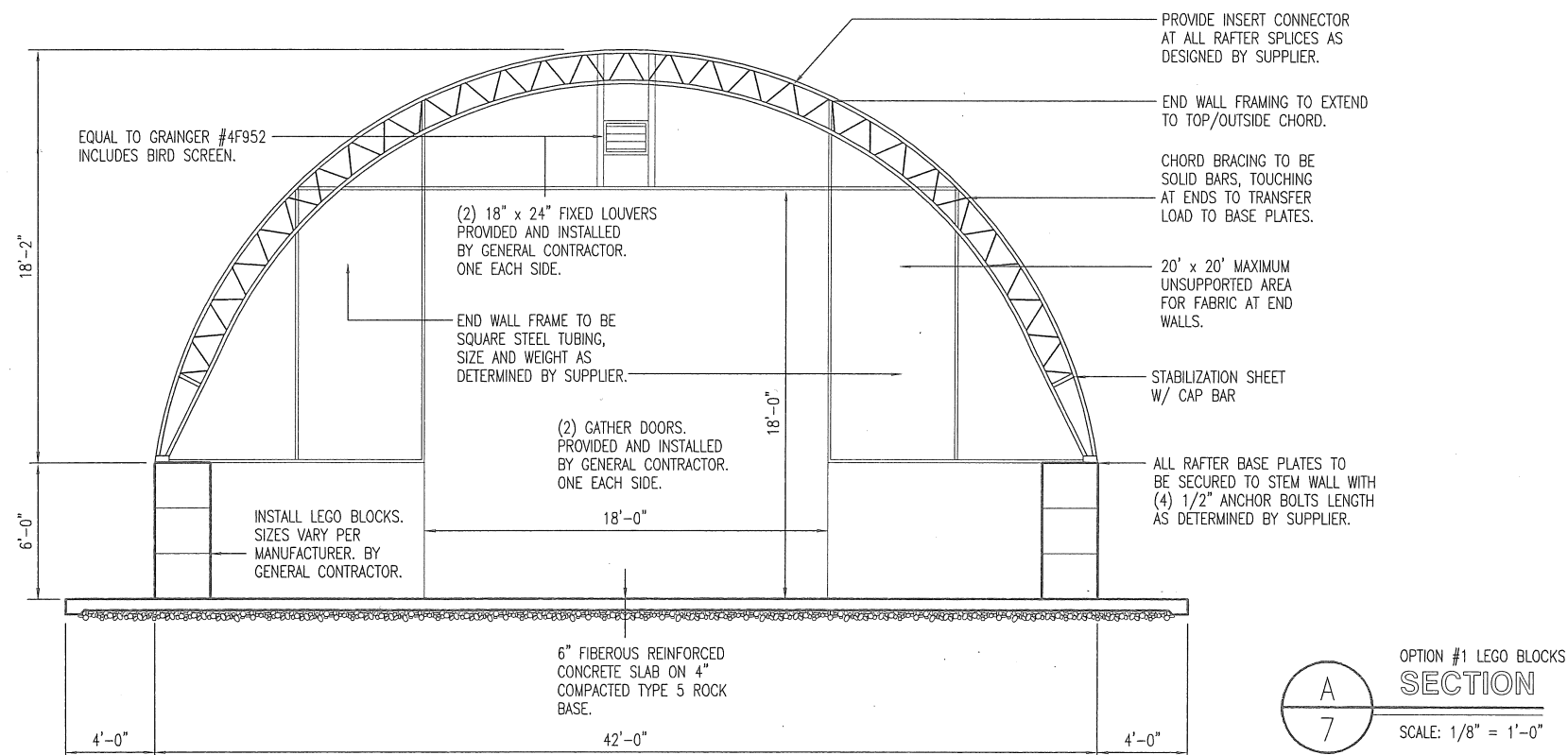
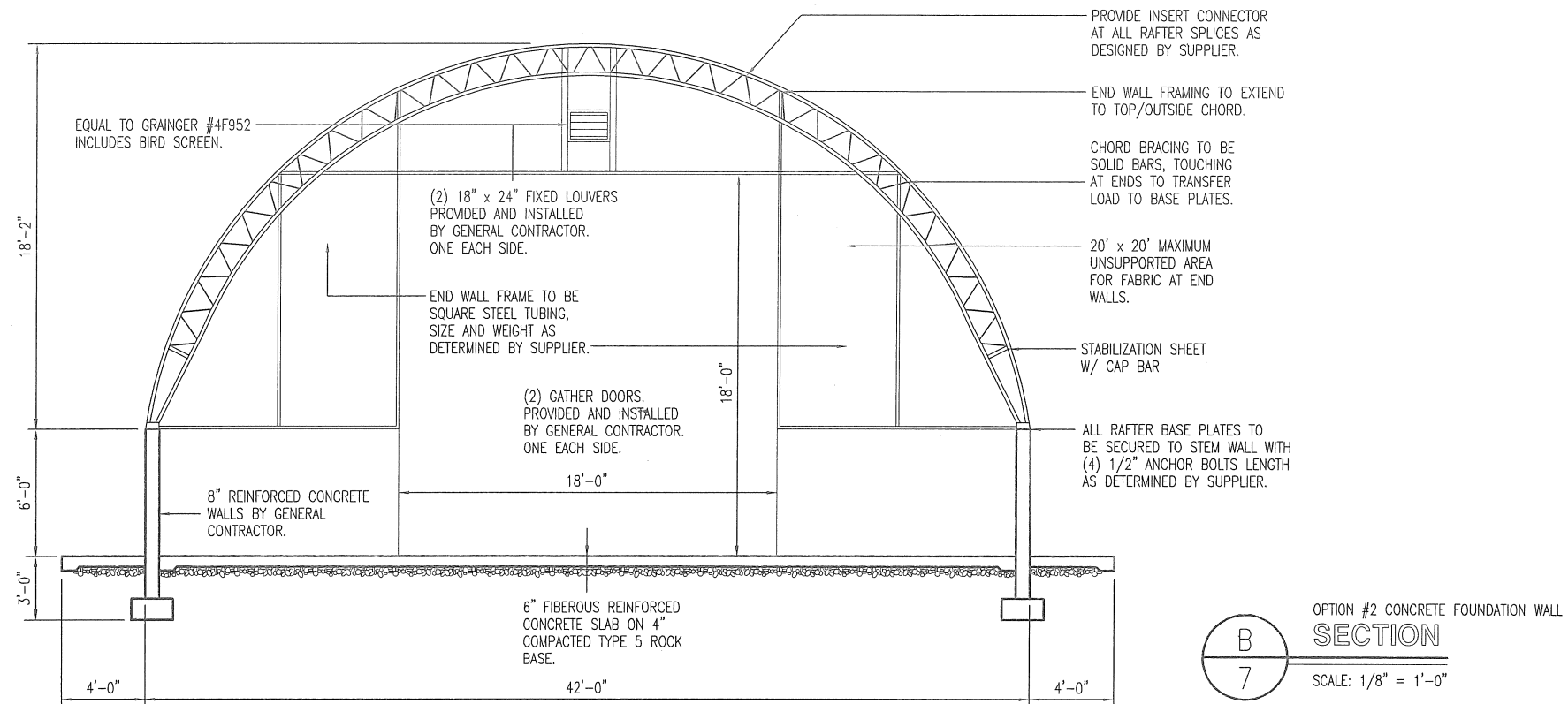
MISSOURI DEPARTMENT  
OF TRANSPORTATION  
GENERAL SERVICES  
FACILITIES MANAGEMENT

SIDE WALL ELEVATION

Sheet 6 of 7



OPTION #1 LEGO BLOCKS (SIMILAR)  
OPTION #2 (SHOWN) FOUNDATION WALL  
SIDE WALL ELEVATION  
SCALE: 1/8" = 1'-0"



DESIGN BY LARRY CARVER  
DATE 4-22-16

KEYTESVILLE FABRIC  
SALT STRUCTURE  
Keytesville, MO - Chariton County

MISSOURI DEPARTMENT  
OF TRANSPORTATION  
GENERAL SERVICES  
FACILITIES MANAGEMENT

SECTION