

Catalog Number:

**CP3B01C1PCAOMO2-UPS-SP**

120/240 VAC, 1-phase, 3-wire; 100 Amps Maximum, (see Main circuit breaker rating)

Rainproof - Type 3R, Aluminum Enclosure

Enclosed Industrial Control - Suitable ONLY for Use as Service Equipment

The short circuit current rating is 10,000 RMS symmetrical amperes maximum at 240volts maximum, in accordance with the table below, but is limited to the lowest short circuit rating of any installed circuit breaker. Watthour meter is not included in the short circuit rating. Replacement circuit breakers must be of the same type and rating.

**UNMETERED NODE CABINET / RECEPTACLE / CIRCUIT DIRECTORY**

No.	Amp.	Poles	Circuit Description	Label (1046983) "UNMETERED"	
1	40	1	ALPHA POWER		
2	20	1	GFI RECEPTACLE		
3			(PROVISIONS FOR C/B ONLY)		
4			(PROVISIONS FOR C/B ONLY)		
5			(PROVISIONS FOR C/B ONLY)		
6	30	1	SIGNAL		

**UNMETERED AUXILIARY CIRCUIT DIRECTORY**

No.	Amp.	Poles	Circuit Description	Label (1046983) "UNMETERED"	
1			(PROVISIONS FOR C/B ONLY)		
2			(PROVISIONS FOR C/B ONLY)		
3			(PROVISIONS FOR C/B ONLY)		
4			(PROVISIONS FOR C/B ONLY)		
5	15	1	FAN		
6			(PROVISIONS FOR C/B ONLY)		

DISTRIBUTION DOOR  
LOCKED BY MEANS OF  
CORBIN LOCK INTEGRATED  
WITH 3-POINT LATCH

BATTERY SHELVES SHALL BE  
MOUNTED TO ROLL OUT SLIDE  
BRACKETS KV8525B-20 (1154379)

THE FOLLOWING COMPONENTS ARE SUPPLIED  
AND INSTALLED BY MILBANK:

- (1) FXM 1100 w/Ethernet port (017-230-23)
- (1) Mounting Bracket Kit (740-697-21)
- (1) Alpha Acsy w/UATS & UGTS, 120V (020-168-23)
- (1) 48B Alpha Guard (012-306-21)
- (1) Battery Harness Kit (740-628-27)
- (4) Gel Cell Batteries (195-GXL-5)
- (2) Battery Heater Mats (189-236-10)

CUSTOMER DOOR MUST HAVE LABEL 1161776 WITH  
YELLOW FINISH AND BLACK LETTERING AS NOTED BELOW

**WARNING**  
**UNINTERRUPTIBLE POWER SUPPLY**  
THIS UNIT MAY REMAIN LIVE EVEN  
WITH THE MAIN BREAKER TURNED OFF.  
  
VERIFY VOLTAGE IS NOT PRESENT AT  
ALL OUTPUTS BEFORE SERVICING  
EQUIPMENT FED BY THIS POWER SUPPLY.

AIC RATING	MAIN	BRANCHES
10	MILBANK TYPE MBQ, SIEMENS TYPE BQ	MILBANK TYPE MBQ, SIEMENS TYPE: BQ (1-POLE 70A MAX), QT, QPF;

Circuit breaker handle trip position is between "ON" and "OFF". To reset breaker, move handle to the full "OFF" position, then to full "ON".

**Terminal Information, Use AL/CU conductors**

FIELD WIRED CONNECTORS				BUS CONNECTIONS				For Equipment Ground ONLY, multiple conductors in a single opening are permissible as indicated below		
Socket Size	Torque Lb.-In.	SLOTTED HEAD SCREWS		THREADFORMING SCREWS		Torque, Lb.-In.	AWG Wire Size	Small Hole	Large Hole	
		AWG Wire Size	Torque, Lb.-In. Small Hole	Large Hole	SCREW	MAT'L				
5/16"	275	#14-10	20	35	10-24	AL	30			
3/8"	375	#8	25	40	10-24	CU	50			
1/2"	500	#6	35	45	1/4-20	AL	50			
9/16"	600	#4	-	45	1/4-20	CU	72			
		#3-1/0	-	50						
								#14-10	1-2	1-2
								#10	1	3
								#8 - 6	1	1
								#4 - 1/0	1	1

Shipping may loosen electrical connections. CHECK TIGHTNESS BEFORE ENERGIZING.

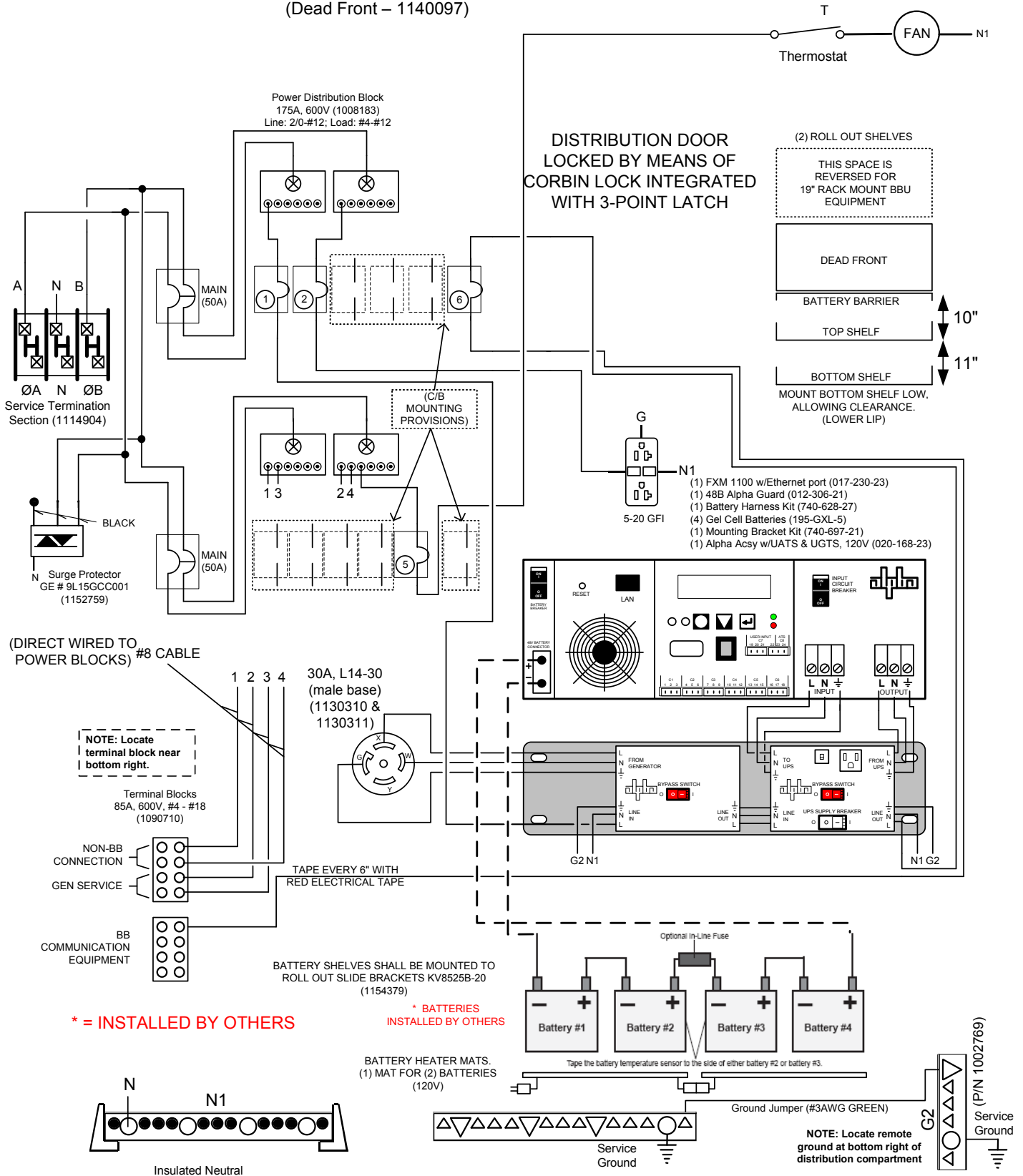
BONDED NEUTRAL – Remove neutral load conductors for test purposes only!  
FIELD INSTALLED conductors shall be 60°C, 75°C, or 90°C, sized to 60°C rating for 110 amps or less; and 75°C or 90°C for 125 amps and above.



Catalog Number:  
**CP3B01C1PCAOM02-UPS-SP\_**

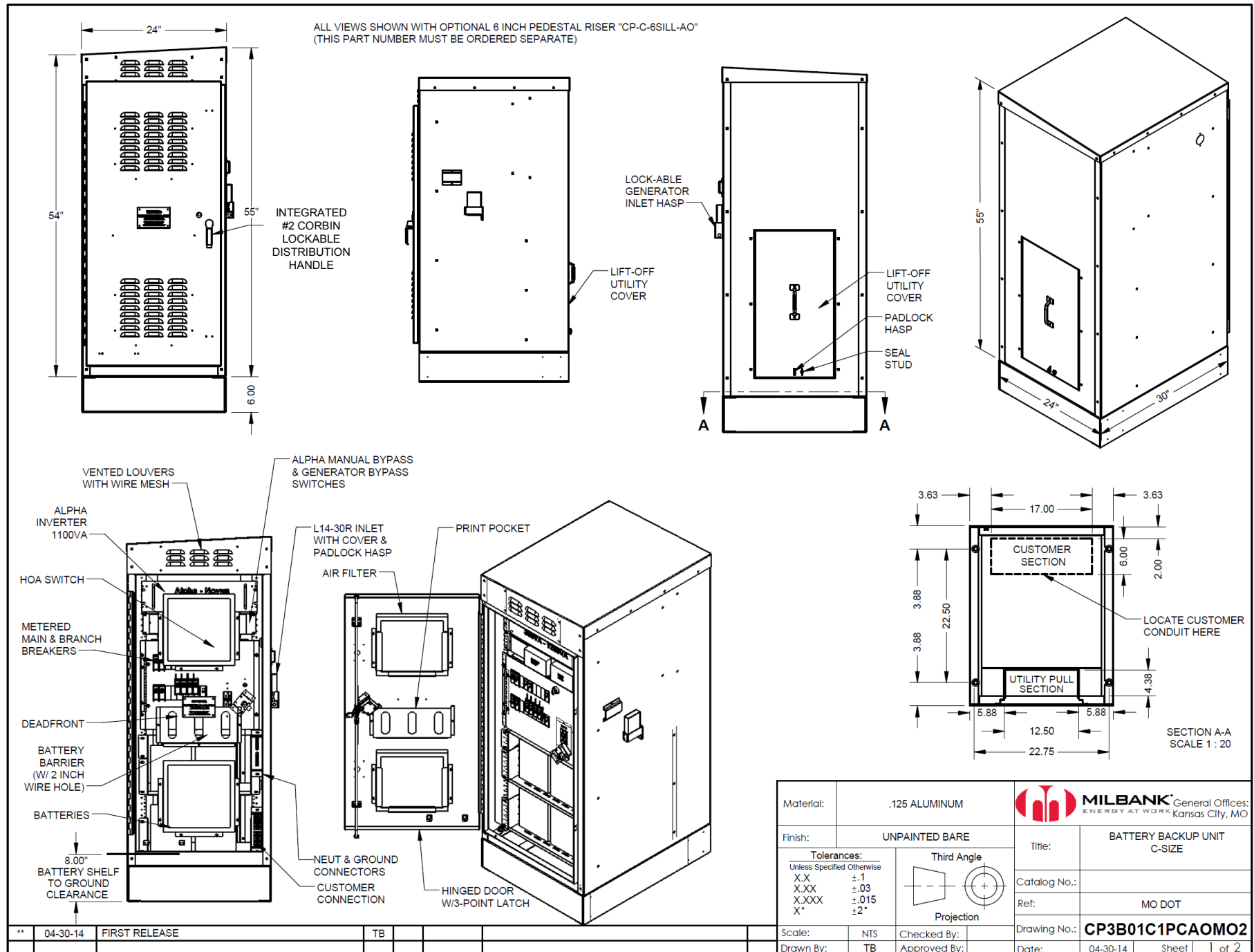
120/240 VAC, 1-phase, 3-wire; 100 Amps Maximum, (see Main circuit breaker rating)  
Rainproof - Type 3R, Aluminum Enclosure  
Enclosed Industrial Control - Suitable ONLY for Use as Service Equipment

(Dead Front – 1140097)



# CP3B01C1PCAOMO2-UPS-SP\_

CP3B01C1PCAOMO2



CP3B01C1PCAOMO2-UPS-SP\_

