

INDEX OF DRAWINGS

- 1 -6 COVER SHEET
- 2 -6 SITE PLAN
- 3 -6 NORTH & WEST ELEVATIONS
- 4 -6 SOUTH & EAST ELEVATIONS
- 5 -6 DETAILS
- 6 -6 ROOF SECTION

MISSOURI DEPARTMENT
OF TRANSPORTATION

HAMPTON PROJECT OFFICE
REROOF

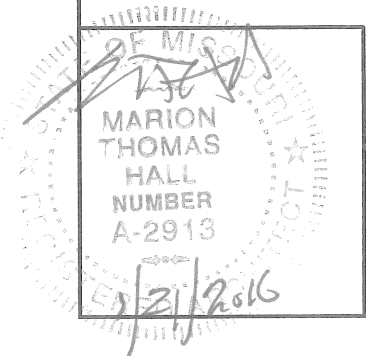
CODE REQUIREMENTS

BUILDING CODE - CURRENT IBC

PLUMBING CODE - CURRENT IBC

ST. LOUIS COUNTY

ST. LOUIS DISTRICT - ST. LOUIS, MO
6138 Wilson Avenue



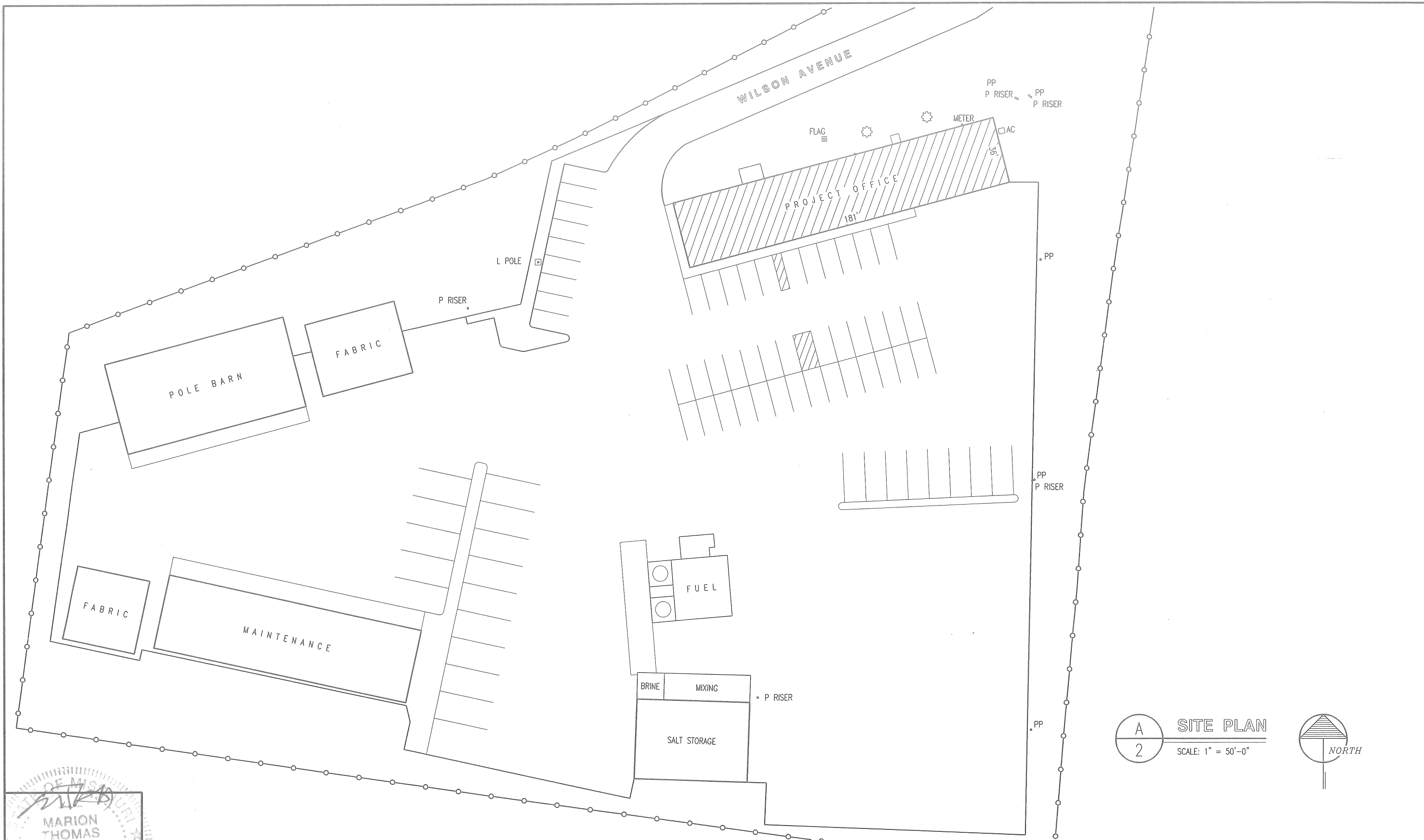
COVER SHEET

MISSOURI DEPARTMENT
OF TRANSPORTATION
DIVISION OF GENERAL SERVICES
FACILITIES MANAGEMENT

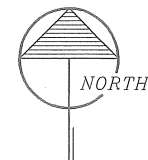
Hampton Project Office Reroof
St. Louis District - St. Louis County
6138 Wilson Avenue, St. Louis, MO

DRAWN BY: LARRY CARVER
DATE: 1-15-16

Sheet
1 of 6



A
2
SITE PLAN
 SCALE: 1" = 50'-0"



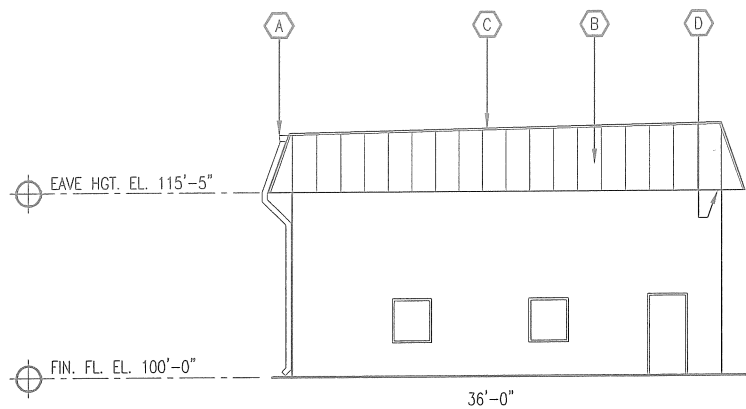
MISSOURI
 MARION THOMAS
 HALL
 NUMBER
 A-2913
 1/24/2016

SITE PLAN

MISSOURI DEPARTMENT
 OF TRANSPORTATION
 DIVISION OF GENERAL SERVICES
 FACILITIES MANAGEMENT

Hampton Project Office Reroof
 St. Louis District – St. Louis County
 6138 Wilson Avenue, St. Louis, MO

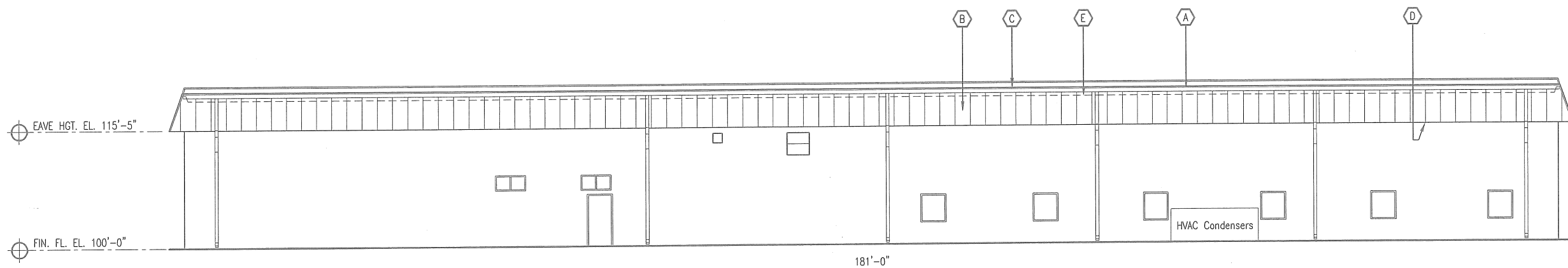
DRAWN BY: LARRY CARVER
 DATE: 1-15-16
 Sheet
 2 of 6



B
3 **WEST ELEVATION**
SCALE: 1/16" = 1'-0"

CONTRACTOR NOTES:

- (A) NEW SEAMLESS ALUMINUM GUTTER AT TOP OF EXTENDED MANSARD ROOF. SECURELY ATTACH AS REQUIRED. BACK-PAINTED NEXT TO STEEL ROOFING.
- (B) REMOVE EXISTING SHINGLES & FELT PAPER DOWN TO THE EXISTING ROOF SHEATHING. DISCARD ALL THE DEBRIS OFF-SITE. EXTEND 3/4" PLYWOOD ROOF SHEATHING TO MATCH EXISTING MANSARD SLOPE. INSTALL SYNTHETIC FELT PAPER OVER ALL THE MANSARD SHEATHING. INSTALL 26 GA. PREFINISHED METAL SHEET ROOFING ON 2 x 4 NAILERS @ 24" O.C.
- (C) INSTALL NEW 26 GA. PREFINISHED DRIP EDGE AT ROOF EDGE. REMOVE THE EXISTING SOFFIT AND DISCARD OFF-SITE. INSTALL NEW VENTED ALUMINUM SOFFIT.
- (D) REMOVE SEVEN EXISTING THRU-SOFFIT DOWNSPOUTS DISCARD OFF-SITE. PROVIDE AND INSTALL SEVEN (7) NEW ALUMINUM DOWNSPOUTS & CONCRETE SPLASH BLOCKS. BACK-PAINT AS REQUIRED DUE TO PREFINISHED ALUMINUM IS IN CONTACT WITH WITH PREFINISHED STEEL.
- (E) TOP OF EXISTING MANSARD ROOF DRIP EDGE SHOWN DASHED. THE ENTIRE ROOF SLOPES TOWARDS THE BACK OF THE BUILDING.



A
3 **NORTH ELEVATION**
SCALE: 1/16" = 1'-0"

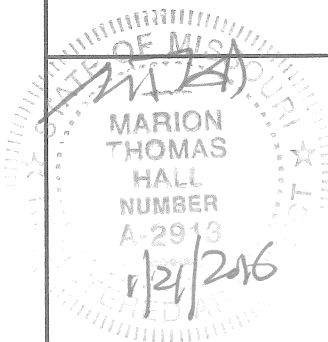
NORTH & WEST ELEVATIONS

**MISSOURI DEPARTMENT
OF TRANSPORTATION**
DIVISION OF GENERAL SERVICES
FACILITIES MANAGEMENT

Hampton Project Office Reroof
St. Louis District – St. Louis County
6138 Wilson Avenue, St. Louis, MO

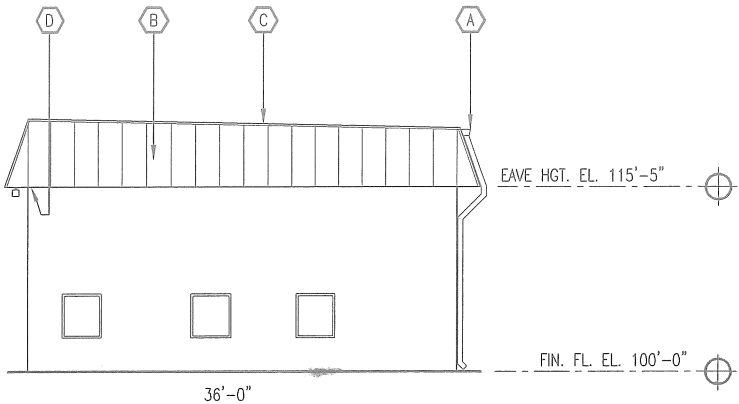
DRAWN BY: LARRY CARVER
DATE: 1-15-16

Sheet
3 of 6

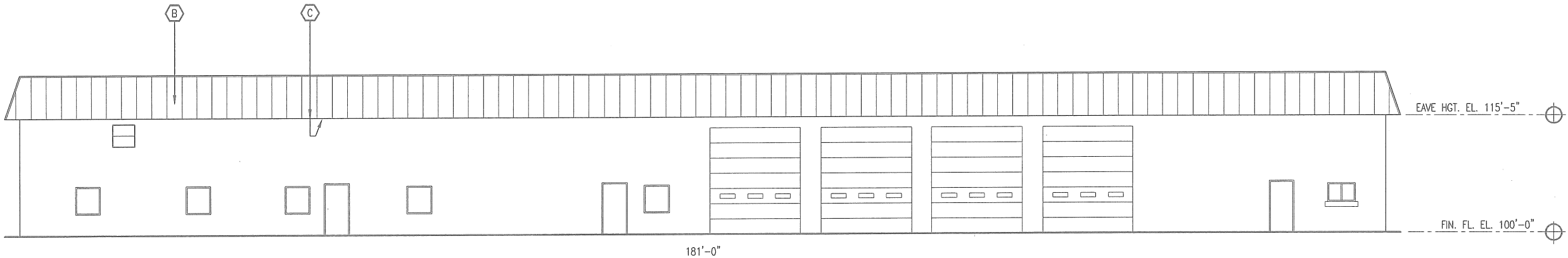


CONTRACTOR NOTES:

- B REMOVE EXISTING SHINGLES & FELT PAPER DOWN TO THE EXISTING ROOF SHEATHING. DISCARD ALL THE DEBRIS OFF-SITE. EXTEND 3/4" PLYWOOD ROOF SHEATHING TO MATCH EXISTING MANSARD SLOPE. INSTALL SYNTHETIC FELT PAPER OVER ALL THE MANSARD SHEATHING. INSTALL 26 GA. PREFINISHED METAL SHEET ROOFING ON 2 x 4 NAILERS @ 24" O.C.
- C INSTALL NEW 26 GA. PREFINISHED DRIP EDGE AT ROOF EDGE. REMOVE THE EXISTING SOFFIT AND DISCARD OFF-SITE. INSTALL NEW VENTED ALUMINUM SOFFIT.



B EAST ELEVATION
4 SCALE: 1/16" = 1'-0"



A SOUTH ELEVATION
4 SCALE: 1/16" = 1'-0"

SOUTH & EAST ELEVATIONS

MISSOURI DEPARTMENT
OF TRANSPORTATION
DIVISION OF GENERAL SERVICES
FACILITIES MANAGEMENT

Hampton Project Office Reroof
St. Louis District - St. Louis County
6138 Wilson Avenue, St. Louis, MO

DRAWN BY: LARRY CARVER
DATE: 1-15-16

Sheet
4 OF 6

MARION
THOMAS
HALL
NUMBER
A-2913

1/21/2018

CONTINUOUS 2 x 4's @ 24" O.C. ATTACHED
AS REQUIRED ALONG TOP OF 2 x 10's.

CONTRACTOR NOTE:

REMOVE SEVEN CAST METAL ROOF DRAINS
NEAR REAR PARAPET & PATCH/BLOCK IN
FLUSH THE HOLES LEFT & COVER WITH ICE
& WATER SHIELD UNDERLAYMENT MATERIAL.

26 GA. PREFINISHED STEEL METAL ROOFING.

PREFINISHED STEEL EDGE TRIM AS REQUIRED.

PROVIDE NEW EXTERIOR SHEATHING ON ALL
SIDES OF THE ROOF'S EXTENSION TO MATCH
EXISTING WITH BLOCKING AS REQUIRED.

REMOVE EXISTING SHINGLES AND FELT PAPER.
DISCARD OFF-SITE. ATTACH CONTINUOUS 2 x 4
BLOCKING AS SHOWN @ 24" O.C. ON NEW
SYNTHETIC FELT PAPER ON EXISTING SHEATHING.

26 GA. PREFINISHED STEEL METAL ROOFING.

PREFINISHED 5" SEAMLESS ALUMINUM GUTTERS
AND SEVEN (7) DOWNSPOUTS. BACK-PAINTED
NEXT TO STEEL ROOFING.

FOAM CLOSURE WITH PREFINISHED RAT
GUARD TRIM AT EDGE.

EXISTING SOFFIT TO BE REMOVED. DISPOSE
OF EXISTING SOFFIT MATERIAL OFF-SITE.
INSTALL PREFINISHED ALUMINUM VENTED
SOFFIT. INSTALL 'F' CHANNEL AT EXISTING
WALL. (TYPICAL)

CONTINUOUS 2 x 4's @ 48" O.C. ATTACHED
WITH 8" DECK SCREWS THROUGH EXISTING
SINGLE-PLY TO REMAIN ONTO EXISTING WOOD
RAFTERS BELOW. VERIFY LOCATION.

SLOPE

2 x 10's @ 4'-0" O.C.

EXISTING CONDITION TO REMAIN
RETAIN SINGLE-PLY ROOFING IN PLACE. PROTECT DURING CONSTRUCTION.

A
5 ROOF DETAIL
SCALE: 1/2" = 1'-0"

MISSOURI DEPARTMENT
OF TRANSPORTATION
DIVISION OF GENERAL SERVICES
FACILITIES MANAGEMENT

Hampton Project Office Reroof
St. Louis District - St. Louis County
6138 Wilson Avenue, St. Louis, MO

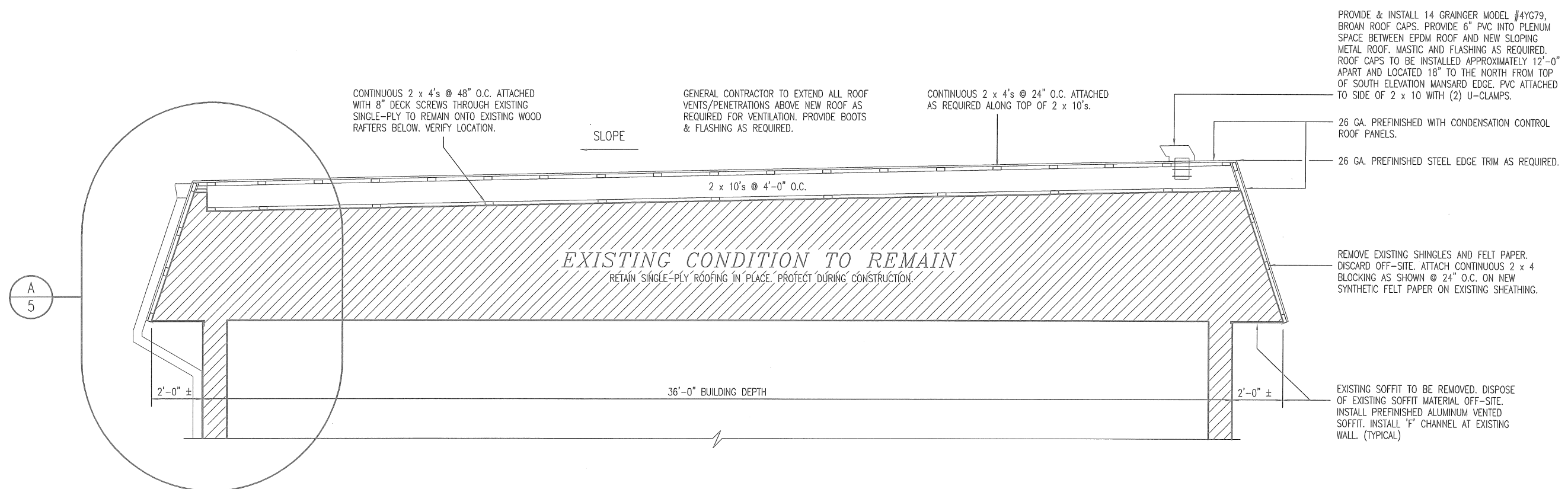
DRAWN BY: LARRY CARVER
DATE: 1-15-16

Sheet
5 of 6

DETAILS

MARION
THOMAS
HALL
NUMBER
A-2913

1/21/2016



ROOF SECTION
 SCALE: 1/4" = 1'-0"

STATE OF MISSOURI
 MARION THOMAS
 HALL
 NUMBER
 A-2913
 4/21/2016

ROOF SECTION

MISSOURI DEPARTMENT
 OF TRANSPORTATION
 DIVISION OF GENERAL SERVICES
 FACILITIES MANAGEMENT

Hampton Project Office Reroof
 St. Louis District – St. Louis County
 6138 Wilson Avenue, St. Louis, MO

DRAWN BY: LARRY CARVER
 DATE: 1-15-16
 Sheet
 6 of 6