

What's Covered

If a defect in material or workmanship is found in a unit and reported during the Warranty Period, NHCE will pay parts and labor costs to repair the defect if the services are performed by an authorized NHCE dealer at the dealer's location. If parts are needed during the repair, NHCE will, at its option, use genuine NHCE new or remanufactured parts. NHCE replacement parts that are used in a warranty repair are warranted until the end of the machine warranty or to the end of the NHCE Replacement Parts Warranty, whichever is longer.

NHCE PROVIDES NO WARRANTY, EXPRESS OR IMPLIED, FOR A COMPONENT OR OTHER ITEM THAT IS SEPARATELY WARRANTED TO THE PURCHASER BY ITS MANUFACTURER, SUCH AS TIRES, BATTERIES AND FUEL INJECTION COMPONENTS. CHECK WITH YOUR DEALER FOR DETAILS

No Modification or Extension of Warranty Period

The NHCE Warranty is limited to the written terms in this document. NHCE does not authorize any person, dealer or agent to change or extend the terms of this warranty in any manner. Any assistance to the purchaser in the repair or operation of any NHCE product outside the terms or limitations or exclusions of this warranty will not constitute a waiver of the terms, limitations or exclusions of this warranty, nor will such assistance extend or re-establish the warranty.

EXCLUSIVE REMEDY

THE REMEDY OF REPAIRING A DEFECT IN MATERIALS OR WORKMANSHIP AT A NHCE DEALERSHIP UNDER THE TERMS OF THIS WARRANTY IS THE PURCHASER'S EXCLUSIVE REMEDY AND IS IN LIEU OF ANY OTHER REMEDY OTHERWISE AVAILABLE.

This Warranty is Void If

The unit's hour meter is changed or altered, unless a NHCE dealer, at the direction of NHCE, changed the meter. If the unit is used in an application for which it is not designed or the unit has been scrapped, salvaged, stolen, junked or totaled.

Limitation and Exclusions

The NHCE Warranty gives you specific legal rights and you may also have other rights, which vary, from region to region.

THIS DOCUMENT CONTAINS THE ENTIRE NHCE WARRANTY. NHCE MAKES NO OTHER REPRESENTATIONS OR WARRANTIES, EXPRESSED OR IMPLIED, AND SPECIFICALLY EXCLUDES THE IMPLIED WARRANTIES OF MERCHANTABILITY AND FITNESS FOR PARTICULAR PURPOSE.* NHCE WILL NOT BE LIABLE FOR INCIDENTAL OR CONSEQUENTIAL DAMAGES RESULTING FROM A BREACH OF THE WRITTEN WARRANTY OR ANY IMPLIED WARRANTY IMPOSED BY LAW.*

Owner's Responsibility

The NHCE warranty remains in effect during the Warranty Period if the owner performs the required maintenance at the recommended intervals outlined in the product operator's manual and the unit is operated within its rated capacity. Genuine NHCE service parts or NHCE approved service parts that meet NHCE specifications must be used for maintenance and repair.

What's Not Covered

- Cost associated with performing pre-delivery or scheduled inspection service.
- Repairs arising from storage deterioration, failure to maintain the equipment, negligence, alteration, improper use of the equipment, collision or other accident, vandalism, or other casualty, or operation beyond rated capacity or specification.
- Repairs arising from abuse or neglect, including but not limited to: operation without adequate coolant or lubricants, adjustments to the fuel system outside equipment specifications, over-speeding, improper storage, starting, warm-up, or shutdown practices, incorrect fuel or contaminated fuel, oil or other fluids.
- Normal maintenance services, such as engine tune-ups, engine fuel system cleaning, checks, adjustments, shimming, etc.
- Replacement of non-defective wear items expected to be replaced during the warranty period, including but not limited to: light bulbs, spark plugs, ignition points, brake or clutch linings, slip clutches, belts, chains, knives, bucket cutting edges and teeth, crawler track pads and track components, crop processing and cutting components, external drive sprockets and chains, soil engaging tools and accessories.
- Items replaced due to customer demand.
- Labor charges performed by anyone except a dealer authorized by contract to repair the equipment, unless they qualify under special provisions (i.e.; outside labor).
- Any and all travel costs for items such as towing, service calls, or transporting a unit to and from the place where the warranty service is performed, unless specifically covered by a campaign or program.
- Claims involving loss or damage during shipment or handling, including units subsequently sold as a "salvage" unit.
- "Salvage" or other units sold on an "as is" basis, unless otherwise specified in writing at the time of sale.
- Normal maintenance costs, including but not limited to: lubricants, coolants, fluids, fuel, filters, and associated labor. Lubricants, filters, and coolants may qualify for warranty reimbursement if they require replacement as a DIRECT RESULT of a defect in material or workmanship.
- Claims involving the inspection or reconditioning of units after storage or prior use.
- Components or items that are separately warranted directly by the manufacturer including but are not limited to: tires, tracks, engines, transmissions, batteries, fuel injection pumps, fuel injectors, etc.
- Shop comebacks: any duplicate, repeat, or comeback repair resulting from improper diagnosis, testing, or service work. This also includes repairs arising from service performed by agents not approved by NHCE.
- Repairs arising from any unauthorized modification to the product or the use of non-NHCE parts, implements or attachments.
- Removal, replacement, or installation of non-NHCE optional equipment, attachments or components.
- Premiums charged for overtime labor costs or out of shop expenses.
- Economic loss including lost profits, crop loss, equipment rental, or other expense.
- Unauthorized modification or updating machines without a warrantable failure based on Service Bulletin information or production changes.
- Any and all costs of special tools
- Any and all costs of dealer shop supplies incurred with repairs, including but not limited to: solvents, cleaners, anti-seize lubricants, loctite, sealant, adhesive, oil-dry, shop towels, etc. Sealant or adhesive may qualify for warranty reimbursement in certain applications requiring a large volume of sealant/ adhesive.
- Failure of the machine, its implements or attachments caused by improper field application or loading.
- Any and all costs for coolant, fuel, or lube (oil) analysis including supplies and lab recommendations.
- Cost of initial setup or installation of any optional equipment or attachments to a unit
- Cost associated with cleaning of machine in preparation for servicing

USA mail original to CNH Industrial Capital America LLC, Attn: WLL Agreement, PO Box 3700, Lancaster, PA 17604-3700 USA
Overnight courier mail original to CNH Industrial Capital America LLC, Attn: WLL Agreement, 100 Brubaker Ave., New Holland, PA 17557
Canada mail original to CNH Industrial Capital America LLC, Attn: WLL Agreement, 4475 North Service Rd, Suite 301, Burlington, ON L7L4X7 Canada



CNH Industrial America LLC
and CNH Industrial Canada, Ltd.

WARRANTY AND LIMITATION OF LIABILITY AGREEMENT NEW HOLLAND CONSTRUCTION EQUIPMENT

The NHCE Warranty

The NHCE Warranty is a limited warranty that is provided to the initial retail purchaser in return for consideration paid as part of the purchase price of the product. The selling dealer must review the warranty coverage with the initial retail purchaser and obtain signature on this document.

New Limited Warranty

The warranty described here is from CNH Industrial America LLC and in Canada, CNH Industrial Canada Ltd., both of which are referred to in this agreement as "NHCE". This warranty is for NHCE products sold and registered in the United States or Canada and normally operated in the United States or Canada. This warranty does NOT apply to any product normally operated outside of the United States and/or Canada, or to any unit purchased outside of the United States or Canada and imported in for any reason other than a customer relocation/personal move.

Warranty Period

For the products listed below, the Warranty Period for all coverage begins at the time that any person, dealer or agent first places the unit into service. At the latest, a unit is considered to be placed into service when purchased or delivered to an initial retail purchaser. Certain demonstration, rental, lease, and other used units may be eligible for a portion of a new unit warranty. The availability of the remaining portion of a new unit warranty does not mean that a unit is new or unused. The Warranty Period ends when either the month or machine hour limit is reached, whichever limit occurs first.

PRODUCT	WARRANTY COVERAGE
SKID STEER / COMPACT TRACK LOADERS	12 Months / Unlimited Hours
CRAWLER DOZERS ¹	12 Months / Unlimited Hours
LOADER BACKHOES / TRACTOR LOADERS	12 Months / Unlimited Hours
WHEEL LOADERS	12 Months / Unlimited Hours
COMPACT WHEEL LOADERS	12 Months / Unlimited Hours
MOTOR GRADERS ¹	12 Months / Unlimited Hours
EXCAVATORS ²	12 Months / 2000 Hours
COMPACT EXCAVATORS	12 Months / Unlimited Hours
TELESCOPIC HANDLERS	12 Months / Unlimited Hours
SEVERE APPLICATIONS (for all of the above)	6 Months / 1000 Hours

1) Engine coverage is provided by directly by the engine manufacturer.

2) Warranty does not cover any configuration excavator equipped with feller buncher/accumulator attachments.

Definition of Severe Application: Severe duty applications include equipment used in Forestry, Demolition, Scrap & Waste Recycling, Mining and Landfills. Misrepresenting the application in which the product will be used on the Warranty Registration, will void Warranty.

Operator's Manual / Warranty Receipt Verification

The selling dealer has reviewed the correct operator's manual with me and will provide upon delivery of the product. YES ☐ / NO ☐

The selling dealer explained safety precautions to me. YES ☐ / NO ☐

The selling dealer explained the warranty terms and coverage to me. YES ☐ / NO ☐

The selling dealer explained Purchased Protection Plan options for additional coverage on select components. YES ☐ / NO ☐

I wish to be part of future NHCE communications, offers or events. YES ☐ / NO ☐

Model:	Serial Number:
Retail DATE / HOURS:	Operator Manual Number:
Purchaser Name (please print):	Dealer Name:
Address:	Address:
City / State:	City / State:
Zip code:	Zip code:
Phone Number:	Phone Number:

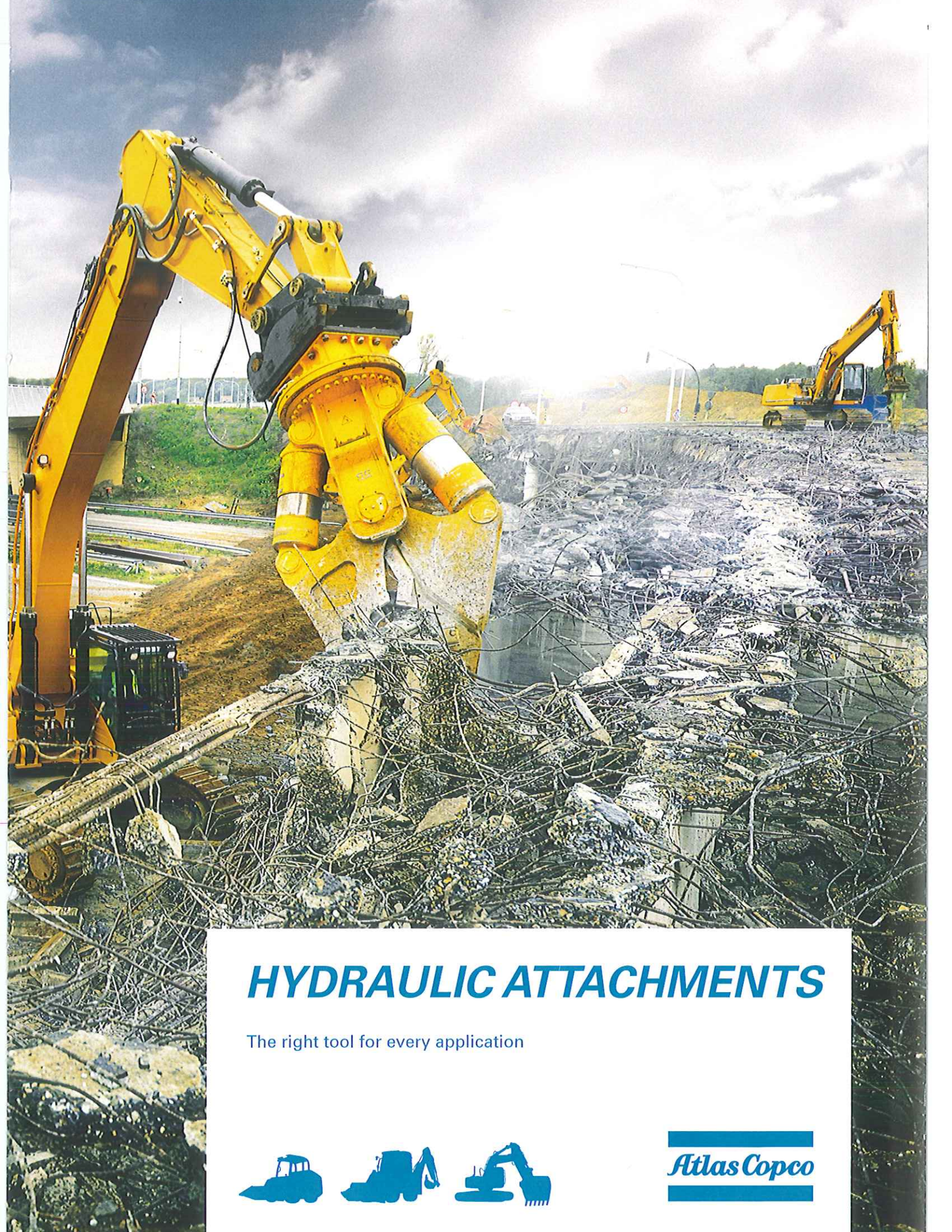
The answers checked above are correct. I acknowledge that I have read and I accept this warranty policy statement.

Purchaser Signature _____ Date _____

Dealer Signature _____ Date _____

USA mail original to CNH Industrial Capital America LLC, Attn: WLL Agreement, PO Box 3700, Lancaster, PA 17604-3700 USA
Overnight courier mail original to CNH Industrial Capital America LLC, Attn: WLL Agreement, 100 Brubaker Ave., New Holland, PA 17557
Canada mail original to CNH Industrial Capital America LLC, Attn: WLL Agreement, 4475 North Service Rd, Suite 301, Burlington, ON L7L4X7 Canada

NHCE is a trademark in the United States and many other countries, owned by or licensed to CNH Industrial N.V., its subsidiaries or affiliates
Original - CNH Copy 2 - Purchaser Copy 3 - Dealer



HYDRAULIC ATTACHMENTS

The right tool for every application



Atlas Copco

Hydraulic attachments for small carriers



Model	Carrier weight	Service weight
COMBI CUTTERS	t	kg
CC 350	2.5–5.0	320
CC 650	5.0–14.0	630
CC 950 U	9.0–16.0	920



Model	Carrier weight	Service weight
DRUM CUTTERS	t	kg
DC 200	1.0–3.0	200
DC 400	3.0–7.0	400
DC 600	8.0–15.0	600



Model	Carrier weight	Service weight	Tool diameter
HYDRAULIC BREAKERS	t	kg	mm
SB 52	0.7–1.1	55	40
SB 102	1.1–3.0	90	45
SB 152	1.9–4.5	140	50
SB 202	2.5–6.0	200	65
SB 302 / SB 302 Scaler	4.5–9.0	300	80
SB 452 / SB 452 Scaler	6.5–13.0	440	95
SB 552	9.0–15.0	520	100





up to 10t



Model	Carrier weight	Service weight
HYDRAULIC COMPACTORS	t	kg
HC 150	1.0–3.0	160
HC 350	3.0–8.0	320
HC 450	4.0–9.0	430
HC 850	9.0–20.0	880

Scan the code
and watch the
video of our
hydraulic
attachment



MULTI GRAPPLES	t	kg
MG 100	0.7–1.2	90
MG 200	1.2–3.0	175
MG 300	2.0–5.0	290
MG 400	4.0–8.0	450
MG 500	5.0–9.0	460



POST HOLE BORER	t	kg
LPHB-M	1.0–3.0	31



SCRAP CUTTERS	t	kg
SC 270	4.0–5.0	385
SC 600	5.5–6.5	645



Hydraulic attachments for medium carriers

Scan the code
and watch videos
of our hydraulic
attachments



Model	Carrier weight	Service weight
BUCKET CRUSHERS	t	kg
BC 1500	12.0–25.0	1,500
BC 2250	17.0–34.0	2,250
BC 3500	25.0–34.0	3,500



Model	Carrier weight	Service weight
BULK PULVERIZERS	t	kg
BP 2050	18.0–27.0	2,050
BP 2050 R	22.0–27.0	2,600
BP 3050	25.0–40.0	3,050



Model	Carrier weight	Service weight
COMBI CUTTERS	t	kg
CC 650	5.0–14.0	630
CC 950 U	9.0–16.0	920
CC 1700 U	15.0–25.0	1,900
CC 1700 S	15.0–25.0	1,750
CC 2500 U	22.0–35.0	2,840
CC 2500 S	22.0–35.0	2,550



Model	Carrier weight	Service weight
DEMOLITION PULVERIZERS	t	kg
DP 2000	18.0–27.0	2,070
DP 2800	25.0–35.0	2,930



Model	Carrier weight	Service weight
DRUM CUTTERS	t	kg
DC 600	8.0–15.0	600
DC 1000	10.0–18.0	1,000
DC 1200	15.0–23.0	1,200
DC 2000	20.0–35.0	2,000
DC 2100	25.0–40.0	2,100



from 10 to 30t



Model	Carrier weight	Service weight	Tool diameter
HYDRAULIC BREAKERS	t	kg	mm
SB 452 / SB 452 Scaler	6.5–13.0	440	95
SB 552	9.0–15.0	520	100
SB 702	10.0–17.0	720	105
MB 750 / MB 750 Dust	10.0–17.0	750	100
MB 1000 / MB 1000 Dust	12.0–21.0	1,000	110
MB 1200 / MB 1200 Dust	15.0–26.0	1,200	120
MB 1500 / MB 1500 Dust	17.0–29.0	1,500	135
MB 1700 / MB 1700 Dust	19.0–32.0	1,700	140
HB 2000 / HB 2000 Dust	22.0–38.0	2,000	145
HB 2500 / HB 2500 Dust	27.0–46.0	2,500	155



HYDRAULIC COMPACTORS	t	kg
HC 850	9.0–20.0	880
HC 1050	20.0–40.0	1,130
HC 1055	20.0–40.0	1,135



HYDRO MAGNETS	t	kg
HM 1500 F / HM 1500 M	12.0–30.0	1,550
HM 2000 F / HM 2000 M	15.0–45.0	2,000



MULTI GRAPPLES	t	kg
MG 800	10.0–16.0	825
MG 1000	12.0–20.0	1,150
MG 1500	17.0–28.0	1,700
MG 1800	20.0–28.0	1,800
MG 2300	25.0–38.0	2,280
MG 2700	28.0–50.0	2,750



Hydraulic attachments for large carriers

Scan the code
and watch videos
of our hydraulic
attachments



Model	Carrier weight	Service weight
BUCKET CRUSHERS	t	kg
BC 2250	17.0–34.0	2,250
BC 3500	25.0–34.0	3,500
BC 4900	34.0–60.0	4,900



BULK PULVERIZERS	t	kg
BP 3050	25.0–40.0	3,050
BP 3050 R	30.0–40.0	3,850



COMBI CUTTERS	t	kg
CC 2500 U	22.0–35.0	2,840
CC 2500 S	22.0–35.0	2,550
CC 3300 U	30.0–50.0	3,480
CC 3300 S	30.0–50.0	3,280
CC 3300 B	38.0–55.0	4,400
CC 4700 U	45.0–65.0	4,750
CC 4700 S	45.0–65.0	4,500
CC 6000 U	58.0–85.0	6,500
CC 6000 S	58.0–85.0	6,300



DEMOLITION PULVERIZERS	t	kg
DP 2800	25.0–35.0	2,930



DRUM CUTTERS	t	kg
DC 2000	20.0–35.0	2,000
DC 2100	25.0–40.0	2,100
DC 2900	35.0–50.0	2,900



from 30 t on



Model	Carrier weight	Service weight	Tool diameter
HYDRAULIC BREAKERS	t	kg	mm
MB 1700 / MB 1700 Dust	19.0–32.0	1,700	140
HB 2000 / HB 2000 Dust	22.0–38.0	2,000	145
HB 2500 / HB 2500 Dust	27.0–46.0	2,500	155
HB 3100 / HB 3100 Dust	32.0–52.0	3,100	165
HB 3600 / HB 3600 Dust	35.0–63.0	3,600	170
HB 4100 / HB 4100 Dust	40.0–70.0	4,100	180
HB 4700 / HB 4700 Dust	45.0–80.0	4,700	190
HB 5800 / HB 5800 Dust	58.0–100.0	5,800	200
HB 7000 / HB 7000 Dust	70.0–120.0	7,000	210
HB 10000 Dust	85.0–140.0	10,000	240



HYDRAULIC COMPACTORS	t	kg
HC 1050	20.0–40.0	1,130
HC 1055	20.0–40.0	1,135



HYDRO MAGNETS	t	kg
HM 2000 F / HM 2000 M	15.0–45.0	2,000



MULTI GRAPPLES	t	kg
MG 2300	25.0–38.0	2,280
MG 2700	28.0–50.0	2,750
MG 3000	35.0–50.0	3,250
MG 5000	50.0–80.0	5,300





PAT KELLY EQUIPMENT CO., INC
314-895-9500
5920 N LINDBERGH BLVD
HAZELWOOD, MO 63042-3124

COMMITTED TO SUSTAINABLE PRODUCTIVITY

We stand by our responsibilities towards our customers,
towards the environment and the people around us.
We make performance stand the test of time.
This is what we call – Sustainable Productivity.

www.atlascopco.com

Atlas Copco



HYDRAULIC BREAKERS EC RANGE

Your durable and reliable choice
for day-to-day demolition, trenching,
earthworks and quarrying jobs.



Atlas Copco

Looking for a reliable rig-mounted breaker for day-to-day jobs?

Check out our EC breaker range

Offering a good price performance ratio, our new EC breakers are specifically designed to meet these needs. They not only offer the reliability that you expect of an Atlas Copco breaker, but also many of the well-known features and benefits.

Whatever the job ...

EC breakers are durable workhorses that will just go on working. They will give you good results and are an excellent choice for a wide range of day-to-day breaking tasks. Use EC breakers for demolition, trenching, earthworks, quarrying and other jobs.

EC 100 T – EC 135 T

Advanced control technology

The integrated control valve optimizes efficiency; the EnergyRecovery system increases operating efficiency and lowers vibrations

Monoblock design

Combined cylinder & tool holder section eliminating the need for tie rods for higher reliability; replaceable piston liner for cost-effective repairs

Percussion chamber ventilation

The built-in check valve reduces dust intake into the tool guiding area and the percussion chamber

Double tool retainer bars

Two oval shaped locking bars for optimum tool guidance and higher durability

ContiLube™ II

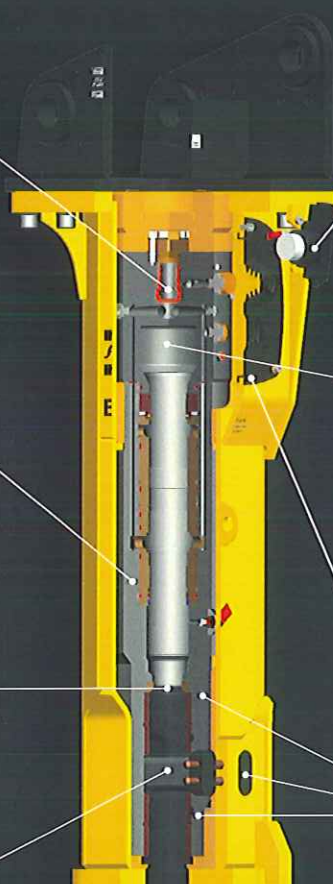
Optional self-bleeding automatic lubrication device for optimized grease consumption and continuous lubrication

Hybrid technology

Integrated nitrogen piston accumulator for constantly high impact energy, safe start-up and smooth operation

VibroSilenced Plus

Non-metallic suspension arrangements to isolate percussion mechanism from breaker box and sealing of all openings for lower noise and vibration levels





Technical data	EC 100 T		EC 120 T		EC 135 T	
Carrier weight class ¹⁾	12–19 t	26,455–41,887 lbs	15–24 t	33,069–52,910 lbs	17–28 t	37,478–61,729 lbs
Service weight ²⁾	800 kg	1,764 lbs	1,200 kg	2,646 lbs	1,500 kg	3,307 lbs
Oil flow	100–120 l/min	26.4–31.7 gpm	120–140 l/min	31.7–37 gpm	140–160 l/min	37–42.3 gpm
Operating pressure	150–170 bar	2,175–2,465 psi	150–170 bar	2,175–2,465 psi	150–170 bar	2,175–2,465 psi
Max. hydraulic input	34 kW		40 kW		45 kW	
Impact rate (AutoStop mode)	650–850 bpm		550–720 bpm		520–680 bpm	
Tool diameter	100 mm	3.94 in	120 mm	4.72 in	135 mm	5.31 in
Sound power level guaranteed ³⁾	118 dB(A)		121 dB(A)		122 dB(A)	
Sound pressure level (r=10m) ³⁾	88 dB(A)		92 dB(A)		93 dB(A)	

1) Weights apply to standard carriers only. Any variances must be agreed with Atlas Copco and/or the carrier manufacturer prior to attachment. 2) Breaker and breaker box with standard adapter plus working tool.
3) Important: EN ISO 3744 in accordance with directive 2000/14/EC. Full details of measurement are available in the Safety and Operating instruction of the product. It can be found on www.acprintshop.com

Durable and reliable

EC 140 T – EC 155 T

ContiLube™ II

Optional self-bleeding automatic lubrication device for optimized grease consumption and continuous lubrication

StrokeControl valve

The combined stroke length and start-up mode switching valve enables the operator to adjust the breaker operation mode to the application for optimum performance

VibroSilenced Plus

Non-metallic suspension arrangements to isolate percussion mechanism from breaker box and sealing of all openings for lower noise and vibration levels

Advanced control technology

The integrated control valve optimizes efficiency; the EnergyRecovery system increases operating efficiency and lowers vibrations

Hybrid technology

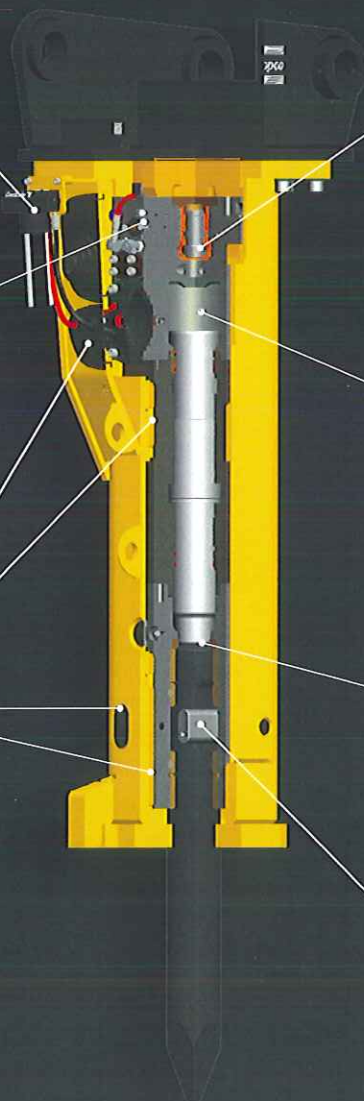
Integrated nitrogen piston accumulator for constantly high impact energy, safe start-up and smooth operation

Percussion chamber ventilation

The built-in check valve reduces dust intake into the tool guiding area and the percussion chamber

Double tool retainer bars

Two oval shaped locking bars for optimum tool guidance and higher durability





Technical data	EC 140 T		EC 150 T		EC 155 T	
Carrier weight class ¹⁾	20–33 t	44,092–72,752 lbs	25–40 t	55,115–88,184 lbs	30–45 t	66,138–99,207 lbs
Service weight ²⁾	1.800 kg	3,968 lbs	2.200 kg	4,850 lbs	2.600 kg	5,732 lbs
Oil flow	130–180 l/min	34.3–47.6 gpm	150–200 l/min	39.6–52.8 gpm	180–220 l/min	47.6–58.1 gpm
Operating pressure	150–170 bar	2,175–2,465 psi	150–170 bar	2,175–2,465 psi	160–180 bar	2,320–2,610 psi
Max. hydraulic input	51 kW		57 kW		66 kW	
Impact rate (AutoStop mode)	380–650 bpm		380–620 bpm		380–590 bpm	
Impact rate (AutoStart mode)	400–800 bpm		450–800 bpm		530–800 bpm	
Tool diameter	140 mm	5.51 in	150 mm	5.91 in	155 mm	6.10 in
Sound power level guaranteed ³⁾	120 dB(A)		120 dB(A)		122 dB(A)	
Sound pressure level (r=10m) ³⁾	90 dB(A)		91 dB(A)		92 dB(A)	

¹⁾Weights apply to standard carriers only. Any variances must be agreed with Atlas Copco and/or the carrier manufacturer prior to attachment. ²⁾Breaker and breaker box with standard adapter plus working tool.
³⁾Important: EN ISO 3744 in accordance with directive 2000/14/EC. Full details of measurement are available in the Safety and Operating instruction of the product. It can be found on www.acprintshop.com



Working tools



Moil point

For sedimentary & soft-medium hard metamorphic rock and non-reinforced concrete



Chisel

For sedimentary & soft-medium hard metamorphic rock and re-inforced concrete



Blunt tool

For igneous & medium hard – hard metamorphic rock

Model	Tool type	Tool width		Working length		Total length	
		mm	in	mm	in	mm	in
EC 100 T	Moil point (conical)	–	–	495	19.49	895	35.24
	Chisel (cross)	100	3.94	495	19.49	895	35.24
	Blunt tool	–	–	495	19.49	895	35.24
EC 120 T	Moil point (conical)	–	–	540	21.26	995	39.17
	Chisel (cross)	120	4.72	540	21.26	995	39.17
	Blunt tool	–	–	540	21.26	995	39.17
EC 135 T	Moil point (conical)	–	–	565	22.24	1.050	41.34
	Chisel (cross)	135	5.31	565	22.24	1.050	41.34
	Blunt tool	–	–	565	22.24	1.050	41.34
EC 140 T	Moil point (conical)	–	–	670	26.38	1.200	47.24
	Chisel (cross)	140	5.51	670	26.38	1.200	47.24
	Blunt tool	–	–	670	26.38	1.200	47.24
EC 150 T	Moil point (conical)	–	–	665	26.18	1.300	51.18
	Chisel (cross)	150	5.91	665	26.18	1.300	51.18
	Blunt tool	–	–	665	26.18	1.300	51.18
EC 155 T	Moil point (conical)	–	–	695	27.36	1.350	53.15
	Chisel (cross)	155	6.10	695	27.36	1.350	53.15
	Blunt tool	–	–	695	27.36	1.350	53.15

ContiLube™ II

Positioned directly on the hydraulic breaker, the unit is self-sufficient, easy to access and allows the operator to monitor the grease levels at all times. Cartridges can be changed quickly without need for special tools.



Fluids

When operating a hydraulic breaker it is essential to use the right grease. Our special hydraulic breaker chisel paste provides excellent properties in a wide temperature range.





PAT KELLY EQUIPMENT CO., INC
314-895-9500
5920 N LINDBERGH BLVD
HAZELWOOD, MO 63042-3124

COMMITTED TO SUSTAINABLE PRODUCTIVITY

We stand by our responsibilities towards our customers,
towards the environment and the people around us.
We make performance stand the test of time.
This is what we call – Sustainable Productivity.

www.atlascopco.com

Atlas Copco

BROCHURE

B SERIES COMPACT EXCAVATORS

E30_B

E35_B

E55_{BX}



- Responsive, fuel-saving power
- Superior 360° visibility
- iNDR System for cool, quiet comfort
- Dig, grade and level for jobsite versatility
- Rugged design for extreme reliability

NEW HOLLAND
CONSTRUCTION

ADD MORE MINUTES TO YOUR DAY.

Get ready to boost your daily productivity with the smooth, responsive power of compact excavators from New Holland. Comfort and versatility are part of their design. New Holland compact excavators not only allow you to excavate, grade and backfill with one machine, they allow you to save fuel and time while doing it.

RESTRICTED AREAS? NO SWEAT.

New Holland compact excavators put big digging power into tight spaces. The center-swing boom arm lets you dig, fill and grade along near-perpendicular angles like footings, curbs and foundations. The boom light is now positioned snugly under the boom, not on the side where it could be damaged. And, zero tail swing means you operate in confidence, knowing your machine always operates within the track footprint.



• NEW! Integrated Noise and Dust Reduction (iNDR) cooling system makes the New Holland cab even more pleasant and quiet.



• Center-swing boom means you can work right next to obstacles.

• Zero tail swing allows for no-worry operation in tight spots.



• Optional 4-way blade provides better control to follow changing terrain, helping to eliminate the windrowing effect that can occur with standard dozer blades.

• iNDR+E option with downward exhaust saves plants and shrubs from drying heat and exhaust.

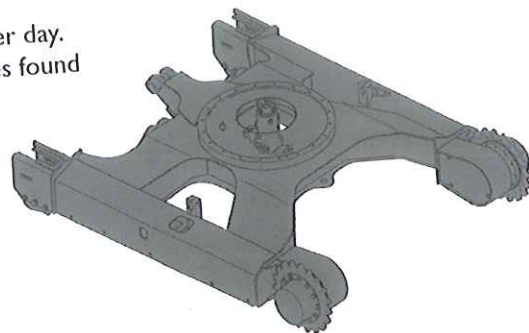
HEAVY-DUTY BY DESIGN

These excavators are ruggedly built to deliver outstanding performance, day after day. In fact, these heavy-duty models feature many of the same robust design features found only on larger excavators:

- Long X-frame that provides excellent stability and support
- Thick gauge steel booms and arms that deliver superior strength
- Sealed rollers, sprockets and travel motors that extend undercarriage life

Auxiliary hydraulics are standard equipment so New Holland compact excavators are factory-ready for grapples, breakers and specialized attachments that expand on-the-job versatility and improve your bottom line.

Ground-level maintenance checkpoints are easy to access with convenient swing-out panels.



Hydraulically controlled dozer blade is standard to give you added versatility for site prep, backfilling and general grading. The unique blade profile efficiently rolls dirt as it pushes, creating a smooth surface.

New, clean-running Tier 4 Final engines reduce emissions while saving you fuel.

COMPLETE COMFORT & VISIBILITY. TOTAL CONTROL.

With New Holland, operators come first, so New Holland compact excavators are designed for maximum control and comfort.

AN EASY VIEW

Choose a 4-post ROPS/canopy or fully enclosed cab with standard air conditioning. Either choice gives you a clear all-direction view for confident, relaxed operation. On cab models, the air conditioner unit is positioned out of your line of sight.



AN OPEN DESIGN WITH CONVENIENT SLIDING DOOR

A wide entry welcomes you to the operator station, and you'll appreciate the foot and shoulder room New Holland excavators offer. The adjustable seat and wrist supports allow for personalized comfort. The convenient sliding cab door (models E30B and E35B) maintains your excavator's footprint by gliding open within the machine frame so it's never in the way.



NEW! FOR THE FIRST TIME IN COMPACT EXCAVATORS: iNDR for quiet comfort

Here's something you won't find on most compact excavators—an Integrated Noise and Dust Reduction (iNDR) cooling system. The system reduces noise by up to 9 dB—a difference you'll notice. The filter located in front of the radiator is easy to remove and clean with compressed air and reduces the need for direct cleaning of the radiator.

NEW! Fuel-saving mode delivers 23 to 25% fuel savings

New Holland compact excavators now feature a new fuel-saving mode that reduces fuel consumption drastically compared to high-idle mode. You position the throttle to one of three positions—low, "S" for fuel-saving, and "H" for high idle.





NEW! Downward exhaust protects plants

Specify the iNDR+E option to eliminate worry that plants, trees or structures will be damaged by heated exhaust. Instead of discharging heated exhaust wind and exhaust gas to the side where it can dry nearby shrubs and plants, the design of the new +E option draws air from the front of the machine and discharges it under the machine using a diffusion muffler for reduced air force.

Smart integrated-flow hydraulic system

The new 2-pump integrated-flow hydraulic system directs power only where you need it for maximum efficiency. Power is automatically sent to bucket and arm when excavating, to the boom when raising and swinging, and to the tracks and dozer blade when grading.

Natural controls

Precision controls are positioned ergonomically—for instinctive operation. Operators can toggle between ISO (excavator) and SAE (backhoe) control patterns to match their preference. The pattern selector and auxiliary hydraulic selector (breaker/nibbler) are positioned under the front of the operator station for convenient changes.

Automatic 2-speed selection

Your compact excavator automatically chooses the speed that matches jobsite conditions, so you can concentrate on the work at hand.

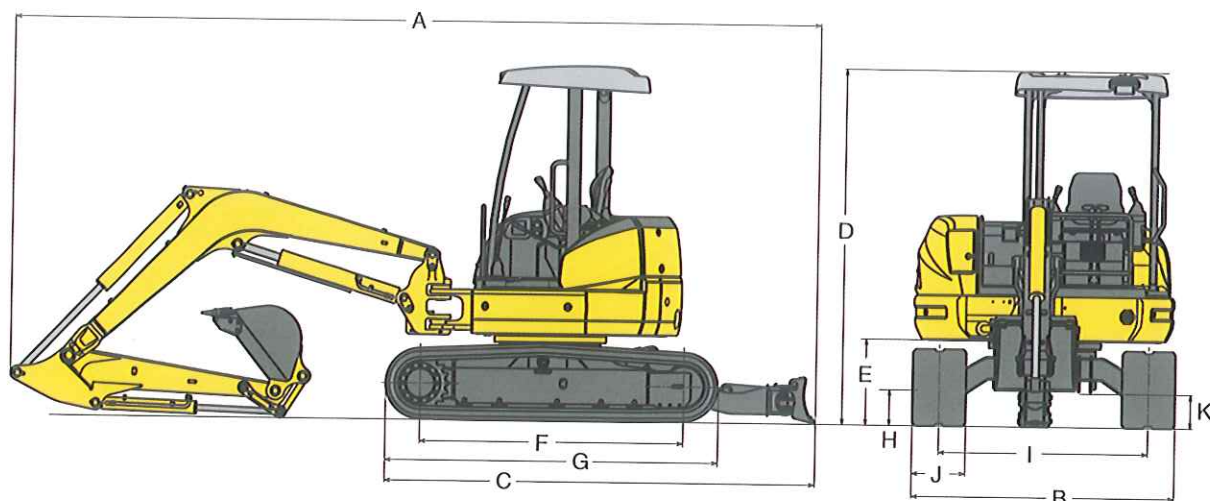


NEW! LCD color display option

Choose conventional analog gauges or the optional new LCD color monitor that provides easy tracking of operations and maintenance.

- Operational achievement of past 3 months
- Fuel and water temperature gauges
- Replacement indicators for engine oil, fuel filter, hydraulic oil filter and hydraulic oil

SPECIFICATIONS



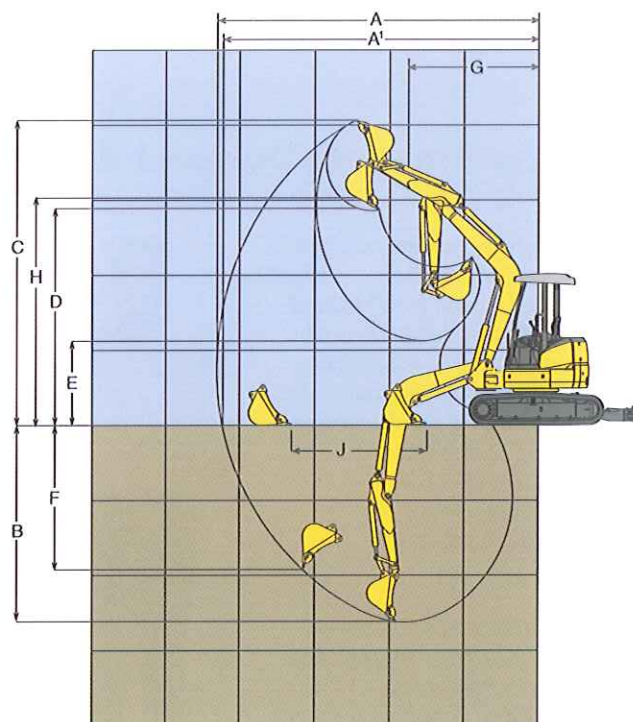
DIMENSIONS, ft. (m)		E30B	E35B	E55Bx
	Arm length	4' 4" (1.32)	4' 4" (1.32)	5' 6.5" (1.69)
	Boom length	7' 7" (2.31)	8' 2" (2.50)	9' 6" (2.89)
A.	Overall length	15' 6" (4.73)	15' 9" (4.82)	18' (5.5)
B.	Overall width	5' 1" (1.55)	5' 7" (1.70)	6' 5" (1.96)
C.	Base machine length	8' 8" (2.64)	8' 8" (2.64)	9' 7" (2.92)
D.	Overall height (to top of canopy)	8' 3" (2.51)	8' 3" (2.51)	8' 3" (2.53)
E.	Ground clearance of rear end	1' 10" (0.57)	1' 10" (0.57)	2' 0.5" (0.625)
F.	Center distance of tumbler	5' 7" (1.70)	5' 7" (1.70)	6' 6" (2.0)
G.	Overall length of crawler	7' 1" (2.16)	7' 1" (2.16)	8' 2" (2.5)
H.	Crawler height at tumbler center (less grouser bar)	1' 8" (0.50)	1' 8" (0.50)	1' 9" (0.53)
I.	Track gauge	4' 1" (1.25)	4' 7" (1.40)	5' 1" (1.56)
J.	Width of crawler shoe (rubber)	11.8" (0.30)	11.8" (0.30)	15.7" (0.40)
K.	Ground clearance of undercarriage	11.8" (0.30)	11.8" (0.30)	12" (0.32)

ENGINE		E30B	E35B	E55Bx
	Model	Yanmar 3TNV88F-E	Yanmar 3TNV88F-E	Yanmar 4TNV88C-PYB
	Displacement, cu in (l)	100.2 (1.642)	100.2 (1.642)	133.5 (2.2)
	Horsepower ISO NET, hp (kW) @ rpm	23.1 (17.2) @ 2,400	23.1 (17.2) @ 2,400	37.4 (27.9) @ 2,400

PERFORMANCE		E30B	E35B	E55Bx
	Base machine weight, lb (kg)	7,319 (3320)	8,212 (3725)	11,309 (5130)
	Travel speed (turtle), mph (km/h)	1.6 (2.50)	1.6 (2.50)	1.4 (2.2)
	Travel speed (rabbit), mph (km/h)	2.7 (4.40)	2.7 (4.40)	2.5 (4.0)
	Drawbar pull force, lb (kN)	8,632 (38.4)	8,588 (38.2)	12,342 (54.9)
	Swing speed, rpm	8.4	8.4	8.5
	Gradeability, degrees (%)	30 (58)	30 (58)	30 (58)

BREAKOUT FORCES		E30B	E35B	E55Bx
	Arm breakout force, SAE lbf (kN)	4,092 (18.2)	4,811 (21.4)	5,328 (23.7)
	Bucket breakout force, SAE lbf (kN)	5,418 (24.1)	5,418 (24.1)	6,992 (31.1)

SERVICE CAPACITIES		E30B	E35B	E55Bx
	Fuel tank capacity, gal (l)	11 (42)	11 (42)	19.8 (75)
	Hydraulic oil reservoir, gal (l)	5.4 (20.4)	5.4 (20.4)	7.3 (27.9)
	Hydraulic system including oil reservoir, gal (l)	11.8 (44.8)	11.8 (44.8)	15.2 (57.7)
	Cooling system, gal (l)	1 (3.6)	1 (3.6)	1.5 (6)
	Lubrication: engine oil, gal (l)	1.5 (5.5)	1.5 (5.5)	1.9 (7.4)



WORKING RANGES, ft. (m)		E30B		E35B		E55Bx
		Standard Arm	Long Arm	Standard Arm	Long Arm	
A.	Max digging reach	17' 6" (5.20)	18' 0" (5.49)	17' 6" (5.35)	18' 6" (5.64)	20' 5" (6.24)
A1.	Max digging reach at ground level	16' 6" (5.04)	17' 6" (5.34)	17' 1" (5.20)	18' 0" (5.49)	20' (6.10)
B.	Max digging depth	9' 3" (2.82)	10' 3" (3.13)	10' (3.05)	12' 0" (3.35)	12' 9" (3.90)
C.	Max digging height	15' 9" (4.80)	16' 5" (5.00)	15' 11" (4.87)	16' 7" (5.05)	19' 5" (5.93)
D.	Max dumping clearance	11' 3" (3.42)	11' 10" (3.60)	11' 5" (3.49)	12' 0" (3.67)	14' 3" (4.35)
E.	Min dumping clearance	4' 3" (1.30)	3' 3" (0.995)	4' 3" (1.31)	3' 4" (1.01)	5' 2" (1.58)
F.	Max vertical wall digging depth	7' 9" (2.36)	9' 6" (2.86)	8' 1" (2.47)	9' 1" (2.76)	10' 3" (3.14)
G.	Min front swing radius	7' 6" (2.30)	7' 8" (2.34)	7' 7" (2.32)	7' 8" (2.33)	7' 4" (2.25)
H.	Height at min front swing radius	12' 2" (3.70)	12' 2" (3.70)	12' 5" (3.79)	12' 6" (3.80)	14' 8" (4.48)
J.	Horizontal digging stroke - ground level	5' 7" (1.71)	8' 8" (2.64)	7' 10" (2.40)	9' 5" (2.86)	9' 10" (3.00)
Ground pressure, psi (kPa)		4.19 (28.9)	—	4.69 (32.4)	—	4.19 (28.9)



COMPACT EXCAVATORS

E30B

Operating Weight
7,319 lbs (3320 kg)

SAE NET Horsepower
23.1 (17.2 kW) @ 2,400 rpm

Max Digging Depth
9' 3" (2.82 m)

Bucket Breakout Force
(SAE) 5,418 lbf (24.1 kN)

E35B

Operating Weight
8,212 lbs (3725 kg)

SAE NET Horsepower
23.1 (17.2 kW) @ 2,400 rpm

Max Digging Depth
10' (3.05 m)

Bucket Breakout Force
(SAE) 5,418 lbf (24.1 kN)

E55Bx

Operating Weight
11,309 lbs (5130 kg)

SAE NET Horsepower
37.4 (27.9 kW) @ 2,400 rpm

Max Digging Depth
12' 9" (3.90 m)

Bucket Breakout Force
(SAE) 6,992 lbf (31.1 kN)

World Class Products Demand World Class Dealers

The purchase of a New Holland machine is just the beginning of our relationship together. Consider your experienced New Holland Construction equipment dealer as your local partner in productivity. Assistance in selecting the right model for your operation and developing an affordable leasing or financing plan through New Holland's financing division, CNH Industrial Capital, are just a few advantages your local dealer can provide.

Your New Holland dealer's full service capabilities bring you responsive support with genuine New Holland parts and all makes coverage. More importantly, we are there wherever and whenever you need us with our fully equipped service vehicles. From customized maintenance programs to professional operator and technical training, our factory-trained service and parts experts are there to assist you with any of your equipment support needs.

Your business deserves nothing less than world class product, supported by a world class business partner. That's your New Holland Construction Equipment dealer — your partner in productivity.



PAT KELLY EQUIPMENT CO., INC
314-895-9500
5920 N LINDBERGH BLVD
HAZELWOOD, MO 63042-3124



New Holland Construction
500 Diller Ave.
New Holland, PA 17557

www.newholland.com

Design, materials and/or specifications are subject to change without notice and without liability therefor. Specifications are applicable to units sold in Canada, the United States, its territories and possessions, and may vary outside these areas.

© 2015 CNH Industrial America LLC. All rights reserved. New Holland is a trademark in the United States and many other countries, owned by or licensed to CNH Industrial N.V., its subsidiaries or affiliates. Any trademarks referred to herein, in association with goods and/or services of companies other than CNH America LLC, are the property of those respective



Safety begins with a thorough understanding of the equipment. Always make sure you and your operators read the Operator's Manual before using the equipment. Pay close attention to all safety and operating decals and never operate machinery without all shields, protective devices and structures in place. This is a one-person machine. Never allow riders in the cab, outside the machine, or in/on any bucket or attachment.



New Holland Construction Equipment is backed with a Limited Warranty for 1-Year/Unlimited Hours. See the Warranty and Limitation of Liability for warranty details and terms.