

TB210R - TB216 - TB230 - TB240 - TB260 - TB290 - TB280FR - TB1140 SERIES 2

TAKEUCHI

Those in the know, know Takeuchi

EXCAVATORS



Features & Benefits

TAKEUCHI

Takeuchi was the first company to introduce compact excavators to the North American market, setting the stage for one of the fastest growing product segments ever released in the compact construction equipment industry.

Takeuchi offers conventional and full rotation models that range in operating weight from 2,370 lbs to 34,116 lbs.

All Takeuchi excavators are rugged, dependable and productive. They provide exceptional value, demonstrate outstanding performance, and are measured by their longevity in the field.

The Takeuchi design philosophy is centered on Four Pillars: Performance, Durability, Operator Comfort, and Serviceability. The engineering focus of Takeuchi is to build machines to the highest standards of quality and performance, machines that incorporate solutions into each and every component and feature.

When you invest in Takeuchi, you receive over five decades of equipment innovation, the quality assurance of ISO-9001 certification and timely after sales support from an industry innovator and leader.



Powerful & Reliable



Compact Mini Excavators

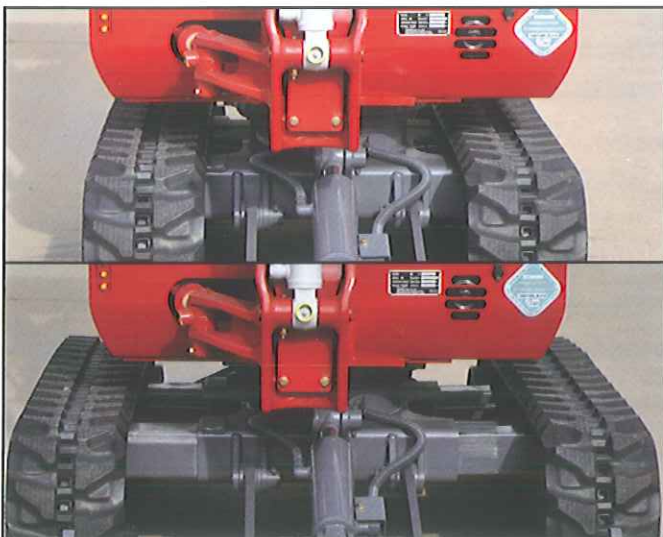
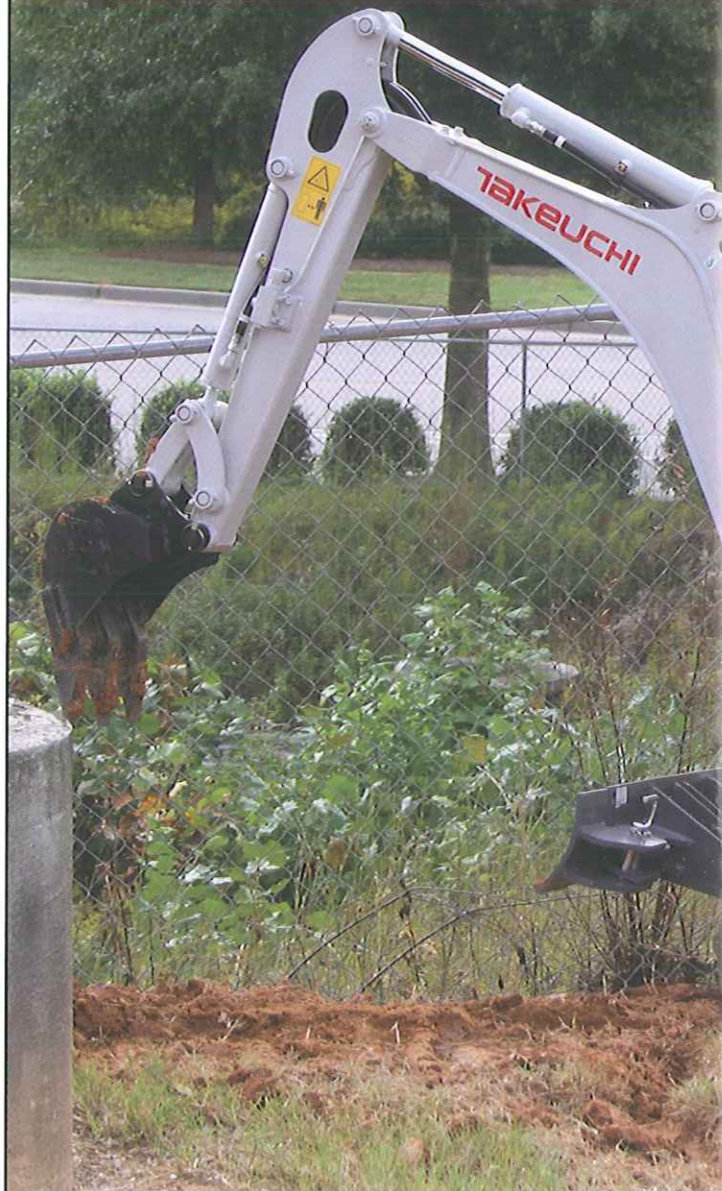
The TB210R has many new and exciting features that will enhance performance, comfort, and serviceability. A new Kubota D722-E4B three cylinder engine powers the TB210R and delivers nearly 22% more power than its predecessor the TB108.

Key upgrades include pilot operated joystick controls, a control pattern change valve for ISO/SAE controls enabling the operator to choose a preferred operational pattern, selector valve for one-way and two-way auxiliary hydraulic flow, and a pilot accumulator that allows residual pressure in the auxiliary hydraulic lines to be released, and enables the work equipment to be lowered to the ground with the engine off.

The TB210R is a minimal tail-swing machine with a foldable ROPS/TOPS, retractable undercarriage and blade, and a boom cylinder that has been repositioned to the top of the boom for greater visibility. If your application requires a machine that will excel in the most confined applications then look no further than the Takeuchi TB210R compact excavator.



Operator's station TB210R.



Hydraulically retractable (TB210R: 29.5" to 40.2", and TB216: 39" to 51") track frame allows operation in confined areas and access through narrow openings.

TB210R & TB216

With many new features, the TB216 replaces the TB016 and provides the operator with a nice blend of power and functionality.

The exterior and interior have been updated to improve functionality, enhance operator comfort, and simplify service and maintenance access.

The operator's station features a new multi-function monitor panel that provides the operator with greater versatility and valuable machine information. Pilot controls provide smooth and precise operation and help reduce operator fatigue.

The engine delivers smooth, efficient power, and meets EPA Final Tier 4 emissions requirements.



Standard long arm allows for greater reach and less time repositioning.



The operator's station of the TB216 offers excellent room and easy operation with its precision pilot controls.

Compact Excavators



The TB230, TB240 and TB260 excavators represent our commitment to providing the highest quality machine in the compact construction equipment industry.

They range in weight from 6,100 lbs to over 12,500 lbs, and are loaded with standard features that will enhance performance, increase durability, improve operator comfort, and simplify maintenance.

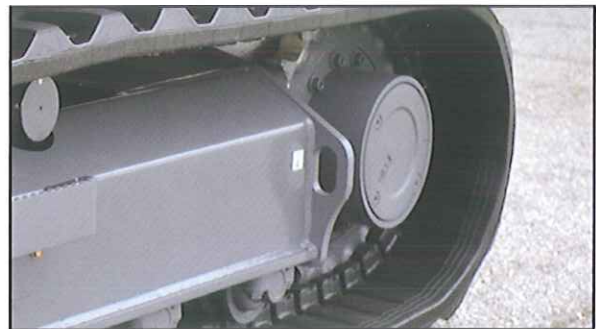
EPA certified engines offer an unprecedented blend of clean and quiet operation, powerful performance, and excellent fuel efficiency.

The advanced four pump hydraulic system enable these machines to operate smoothly and perform multiple functions with ease resulting in faster cycle times and increased production while being very fuel efficient. To enhance fuel efficiency and further reduce operating costs, these models feature an automatic idle system.

Their conventional tail swing design ensures these excavators are well balanced, provide exceptional stability and lifting strength. They deliver extraordinary bucket and crowd forces allowing the operator to excavate in the most

demanding applications. Cushioned cylinders not only reduce shock and extend component life, but they also contribute to smoother operation allowing the operator to keep more material in the bucket where it belongs.

Planetary drives with automatic step down travel motors generate a great deal of traction force to power through difficult terrain. Automatic, load sensing two-speed travel allows the machine to



Two-speed travel with automatic shift down for turning and ascending grades.

shift from high speed travel to low speed, high torque mode automatically when under load.

Durability is a cornerstone to the success of Takeuchi excavator products. While it is easy to see many of the components and features that make a Takeuchi excavator so durable, there are also many that go unseen. Takeuchi manufactures excavators that will provide more uptime and higher resale values. Heavy gauge steel is used throughout, oversized pins are utilized from the bucket link all the way to the boom swing, and heavy duty components can be found throughout the machine. Attention to detail along with quality parts are why Takeuchi has a reputation for providing highly reliable products.

Triple flange track rollers help maintain multiple points of contact between the track lugs and rollers reducing the likelihood of de-tracking when working on a slope or in difficult material. Short pitch rubber tracks increase roller to rail contact resulting in smoother travel.

TB230, TB240 & TB260

The heavy-duty dozer blade features large gusset reinforcements, and a square tube frame to withstand many hours in the field. Float position is provided as a standard feature and will simplify backfilling and grading operations. An optional power angle blade features a reversible, two



Triple flange track rollers and the short pitch rubber tracks allow for increased roller/rail contact and smoother traveling.

piece bolt-on edge and is available on the TB230, TB240, and TB260 and it can angle 25 degrees to the right and left enhancing the machine's performance.

The spacious operator's station found in Takeuchi excavators features a high level of comfort and functionality. Increased interior volume, outstanding visibility, improved foot space,



The heavy duty frame and components provide long term durability and up time.

foldable travel pedals, large adjustable arm rests, and an isolation mounted platform to minimize vibration and noise are some of the features that we have incorporated into our products to help reduce fatigue and enhance operator comfort.

A deluxe high-back suspension seat is standard and features a retractable seat belt and three height adjustments, improving visibility, comfort and placing the operator in the optimum operating position.

An electronic engine monitoring system has been incorporated to ensure uninterrupted machine operation, along with a gauge cluster that clearly displays visual warnings as well as audible alerts for low engine oil pressure and coolant temperature.



For added safety the operator's station is ROPS, TOPS, and FOPS certified, and features large grab handles and steps allowing the operator to easily enter and exit the machine.

For year round comfort an optional enclosed cab that includes standard high capacity air conditioning and heat, deluxe AM / FM radio with MP3 connection, convenient storage compartments and a front window with cylinder assisted lift is available.

Compact Excavators

Serviceability is important, and each Takeuchi compact excavator is designed to simplify service access reducing downtime, and saving you valuable time and money. The wide opening engine hood and side cover provide outstanding access to key inspection and maintenance points. While grease points are clearly marked and easy to service.

The TB240 and TB260 feature a high capacity, side-by-side radiator and oil cooler allowing them to operate more efficiently. Component life and cooling capacity is improved due to improved air flow, and inspection and cleaning of the cooling module is easy to perform.

Large fuel filters ensure the fuel system stays clean for efficient operation. If the excavator is

run out of fuel, an electric pump and self priming technology allow the fuel system to bleed off air by turning the key to the on position. This feature eliminates the need for tools or a possible service call.

Blade and boom cylinders feature segmented hoses that are easily replaced if damaged.

The ignition and all compartments are lockable using one key to protect against vandalism.

Takeuchi sets the bar higher with a standard two year / 2,000 hour full machine warranty providing additional value and peace of mind. So operate with confidence knowing that Takeuchi provides one of the most comprehensive warranties in the industry today.



Spacious automotive styled interiors.

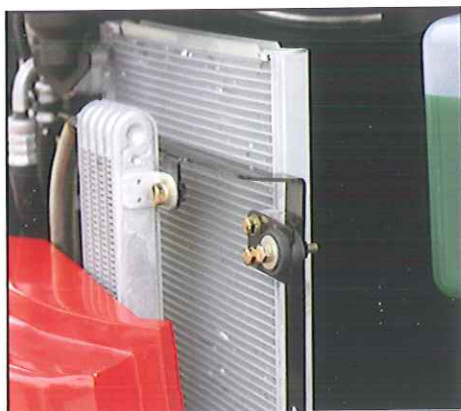
TB230, TB240 & TB260



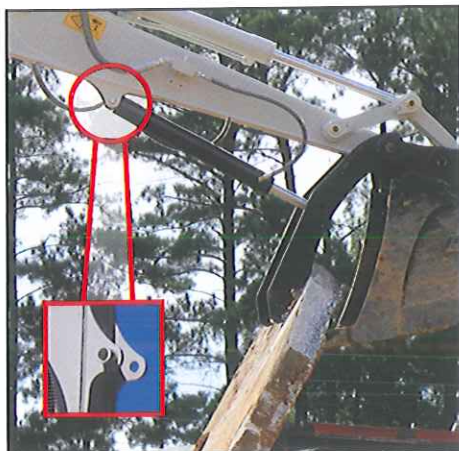
Large doors provide easy access to all major engine and hydraulic components.



Low effort pilot controls and simple switches are easy to use.



Heavy duty cooling system provides greater cooling capacity and extended component life.



Thumb cylinder mount incorporated into the arm for easy pin on installation.



Mid-Size Compact Excavators

If you desire a feature packed mid-size excavator with the speed and power to move large volumes of material in a short amount of time, you should look no further than Takeuchi. The TB290 and the TB1140 SERIES 2 are the largest conventional excavators in the Takeuchi line and weigh 18,630 lbs to 34,700 lbs. These machines take on the big jobs and are primarily used in pool excavation, landscaping, highway and bridge construction, demolition, recycling and remediation applications.



Spacious automotive styled interiors.

The TB290 and TB1140 SERIES 2 are equipped with large spacious cabs that offer excellent visibility and comfort, and feature a deluxe high back suspension seat, arm rests and easy to operate pilot controls with standard pattern selector valve. For year round operator comfort each cab is equipped with air conditioner, heater, defrost, windshield wiper, deluxe AM / FM radio with MP3 connection, sunshade, stow-able front glass, and sliding side windows. For added peace of mind these cabs provide additional safety and security with their certified ROPS, FOPS structure.

Advanced hydraulic systems provide smooth, synchronized control of the boom, arm, and swivel with no reduction in working speed. This enables the engine to work more efficiently, resulting in faster cycle times and increased production. Twin heavy duty boom cylinders provide the strength needed for lifting and additional clearance for buckets and attachments. Cushioned cylinders equate to smoother operation and reduced stress on the frame and other components.



Both the TB290 and TB1140 have primary and secondary circuits with independent proportional control.

The elevated K-frame design gives the operator a stable platform when digging over the side of the tracks and provides better ground clearance. The sloped design limits the accumulation of dirt and debris on the undercarriage.



Elevated K-frame design.

TB290 & TB1140 SERIES 2



Heavy duty dozer blade with integrated anchor points.

A standard heavy duty dozer blade features integrated gusset reinforcements for superior strength and durability. The blade and frame feature large anchor points to easily secure the machine for transport.



Two boom cylinders provide the strength needed for lifting, while the independent boom swing allows both excavators to dig offset over the left or right track.



TB1140 SERIES 2 Hydraulic Excavator.

Full Rotation Excavator

The Takeuchi Full Rotation excavator is the result of years of extensive research, field testing, evaluation and product refinement.

The new EPA certified engine offers an unprecedented mix of clean and quiet operation, powerful performance, and excellent fuel efficiency.

A unique four pump hydraulic system provides a machine that runs smoothly and can perform multiple functions easily, resulting in faster cycle times and increased production. And the standard control pattern selector valve is easy to change for operator preference.

Cushioned hydraulic cylinders reduces shock which improves component life and operator comfort, and contributes to smoothness and ease of operation.

The TB280FR features an attachment interference system which prevents larger attachments from coming into contact with the cab when the boom is fully raised in the offset position.



Exceptional stability and lifting capability are trademarks of the TB280FR, and powerful digging forces provide the power to excavate the toughest materials.

The patented STS (side-to-side) boom system and zero swing capabilities allow 360° slewing, making the FR the most versatile excavator available today.

Planetary final drives provide the most efficient and durable method of speed reduction and

torque amplification. The drive system utilizes spring applied, hydraulically released, multiple wet friction disk parking brake for strong and reliable holding power.

Triple flange track rollers and short pitch rubber tracks allow for increased roller/rail contact and smoother travel. Additional track options include steel and road liner tracks.



A large, wrap around heavy-duty counterweight keeps the machine stable while protecting key engine and hydraulic components.

TB280FR

A heavy-duty dozer blade with float function is standard equipment, and allows the operator to easily backfill and perform finish work on job sites.

Step-down travel motors automatically shift from high to low range travel when turning or climbing a steep grade. Once the turn is complete or the ground levels out, the travel motors automatically return to high range travel.

The spacious cab provides outstanding visibility to the job site and work equipment. While the new interior provides greater functionality with the addition of a multi-function color LCD monitor panel, function switches, and new blade control lever. A high back suspension seat with height adjustments allow the operator to remain comfortable, and place themselves in an optimal operational position for improved safety and productivity.

The TB280FR features a side-by-side radiator and hydraulic oil cooler that provides greater cooling capacity. The design of the cooling module ensures that each component is exposed to fresh clean air allowing the excavator to run more efficiently enhancing performance and extending component life.

Large fuel filters ensure the fuel system stays clean for efficient operation. If the excavator is run out of fuel, an electric pump and self priming technology allows the fuel system to bleed off air by turning the key to the on position. This feature eliminates the need for tools or a possible service call.

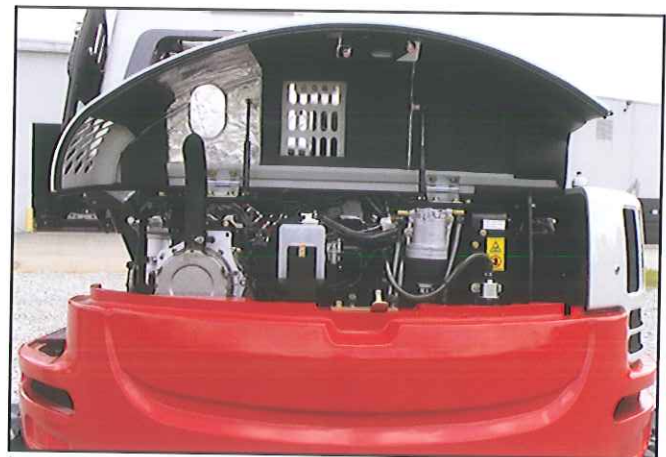
For added convenience and serviceability the operator's station tilts forward providing access to key hydraulic components: control valve, hydraulic lines, swing motor, and swivel joint. It also provides access to the back of the engine making it easier to service the starter and alternator.



Tilt-up operator's platform provides improved access to all major hydraulic components.



Unique Side-to-Side (STS) boom design enables this machine to work in confined work spaces.



Large rear door allows for easy access to key engine components

Specifications

OPERATING PERFORMANCE

	TB210R	TB216	TB230	Canop Ca
Operating Weight	Canopy 2,370 lbs (1,075 kg)	Canopy 3,902 lbs (1,770 kg)	Canopy 6,360 lbs (2,885 kg)	
Maximum Digging Depth	5 ft 9.1 in (1,755 mm)	7 ft 10 in (2,390 mm)	9 ft 3.6 in (2,835 mm)	
Maximum Dump Height	6 ft 11.5 in (2,120 mm)	8 ft 10.5 in (2,705 mm)	10 ft 7.2 in (3,230 mm)	
Maximum Reach	10 ft 9.4 in (3,285 mm)	13 ft 5 in (4,090 mm)	15 ft 10.9 in (4,850 mm)	
Maximum Bucket Breakout Force	2,518 lbs (1,142 kg)	4,250 lbs (1,928 kg)	6,471 lbs (2,935 kg)	
Maximum Arm Digging Force	1,439 lbs (653 kg)	1,843 lbs (836 kg)	2,900 lbs (1,325 kg)	
Arm Length	2 ft 10.6 in (880 mm)	3 ft 8.5 in (1,130 mm)	4 ft 9 in (1,445 mm)	
Slew Speed	10.0 rpm	9.2 rpm	10.3 rpm	
Traction Force (lbs)	2,878 lbs (1,305 kg)	4,361 lbs (1,978 kg)	6,340 lbs (2,876 kg)	

ENGINE

	TB210R	TB216	TB230	
Make / Model	Kubota / D722-E4B	Yanmar / 3TNV74	Yanmar / 3TNV88F	
Tier Rating	EPA Final Tier 4	EPA Final Tier 4	EPA Final Tier 4	
Cylinders / Displacement	3 / 43.9 cu in (.72 L)	3 / 60.6 cu in (.99 L)	3 / 81 cu in (1.3 L)	
Horsepower Gross	11.7 hp (8.7 kW)	15.0 hp (11.2 kW)	24.4 hp (18.2 kW)	
Rated Engine Speed	2,200 rpm	2,400 rpm	2,400 rpm	
Maximum Torque	26.4 ft-lb @ 1,900 rpm (35.8 Nm)	38.2 ft-lb @ 1,800 rpm (51.8 Nm)	63 ft-lb @ 1,440 rpm (85.3 Nm)	102.6 ft-lb @
Engine Lubrication	3.0 qt (2.8 L)	4.5 qt (4.3 L)	5.0 qt (4.7 L)	
Cooling System	4.2 qt (4.0 L)	4.0 qt (3.8 L)	4.2 qt (4.0 L)	
Fuel Tank Capacity	3.3 gal (12.4 L)	5.8 gal (22.0 L)	14.0 gal (53.0 L)	
Fuel Consumption (65% of full load)	NA	0.63 gal / hr (2.4 L / hr)	0.8 gal / hr (3.3 L / hr)	
Electrical System	12 volts / 40 amps	12 volts / 40 amps	12 volts / 40 amps	

UNDERCARRIAGE

	TB210R	TB216	TB230	
Track Rollers (per side)	3	3	3	
Track Width	Rubber 7.1 in (180 mm)	Rubber 9.0 in (230 mm)	Rubber / Steel 11.8 in (300 mm)	Rubber /
Track Ground Contact Length	3 ft 3.6 in (1,005 mm)	3 ft 9.5 in (1,155 mm)	4 ft 8.7 in (1,440 mm)	
Ground Pressure	4.1 psi (28 kPa)	4.3 psi (29.6 kPa)	4.3 psi (29.6 kPa)	Can
Maximum Travel Speed				
Low Range	1.2 mph (2.0 km / hr)	1.4 mph (2.2 km / hr)	1.8 mph (2.9 km / hr)	
High Range	2.3 mph (3.7 km / hr)	2.6 mph (4.2 km / hr)	3.2 mph (5.2 km / hr)	

HYDRAULIC SYSTEM

	TB210R	TB216	TB230	
Total Hydraulic Flow (gpm)	5.9 gal / min (22.2 L / min)	13.45 gal / min (50.9 L / min)	24.2 gal / min (91.6 L / min)	30.6
Auxiliary Hydraulic Flow - Primary	5.9 gal / min (22.2 L / min)	8.9 gal / min (33.6 L / min)	13.4 gal / min (50.6 L / min)	17.1
Auxiliary Hydraulic Flow - Secondary				
Auxiliary Hydraulic Pressure (adjustable)	2,640 psi (18.2 MPa)	3,046 psi (21.0 MPa)	3,046 psi (21.0 MPa)	
Hydraulic Reservoir Capacity	2.3 gal (9.0 L)	4.2 gal (16.0 L)	9.2 gal (35.0 L)	
Hydraulic System Capacity	4.0 gal (15.0 L)	6.5 gal (24.5 L)	14.8 gal (56.0 L)	

DIMENSIONS

	TB210R	TB216	TB230
Maximum Dig Depth	5 ft 9.1 in (1,755 mm)	7 ft 10 in (2,390 mm)	9 ft 3.6 in (2,835 mm)
Maximum Dump Height	6 ft 11.5 in (2,120 mm)	8 ft 10.5 in (2,705 mm)	10 ft 7.2 in (3,230 mm)
Maximum Reach Ground Level	13 ft 2.9 in (4,035 mm)	13 ft 2.9 in (4,035 mm)	15 ft 5.4 in (4,710 mm)
Maximum Vertical Dig Depth	4 ft 10.0 in (1,475 mm)	6 ft 9 in (2,060 mm)	7 ft 0.8 in (2,153 mm)
Undercarriage Width	Retracted 29.5 in (750 mm) Extended 40.2 in (1,020 mm)	Retracted 38.6 in (980 mm) Extended 51.2 in (1,300 mm)	4 ft 9.5 in (1,460 mm)
Height	7 ft 2.6 in (2,200 mm)	7 ft 5.8 in (2,281 mm)	8 ft 3.9 in (2,540 mm)
Length (Transport)	9 ft 8.3 in (2,955 mm)	12 ft 8.3 in (3,870 mm)	15 ft 0.9 in (4,595 mm)
Ground Clearance	6.2 in (157 mm)	8.1 in (205 mm)	11.9 in (305 mm)
Dozer Blade Height	7.9 in (200 mm)	12.2 in (310 mm)	14.0 in (300 mm)
Independent Boom Swing Angle	85° Left / 85° Right	80° Left / 50° Right	78° Left / 58° Right
Minimum Front Radius (offset)	3 ft 2.9 in (980 mm)	3 ft 9.5 in (1,155 mm)	4 ft 11.2 in (1,505 mm)
Tail Swing Radius	2 ft 0 in (610 mm)	3 ft 6.3 in (1,075 mm)	4 ft 4.4 in (1,330 mm)

TB240

y 8,570 lbs (3,890 kg)
 ab 8,990 lbs (4,080 kg)
 11 ft 4.4 in (3,465 mm)
 12 ft 6.7 in (3,828 mm)
 18 ft 2.3 in (5,545 mm)
 9,959 lbs (4,517 kg)
 4,110 lbs (1,864 kg)
 5 ft 3 in (1,600 mm)
 9.6 rpm
 9,533 lbs (4,324 kg)

TB260

Canopy 12,125 lbs (5,500 kg)
 Cab 12,645 lbs (5,735 kg)
 12 ft 9.4 in (3,895 mm)
 13 ft 10.1 in (4,220 mm)
 20 ft 6.9 in (6,270 mm)
 12,756 lbs (5,786 kg)
 5,755 lbs (2,610 kg)
 5 ft 10.1 in (1,780 mm)
 9.4 rpm
 14,006 lbs (6,353 kg)

TB290

Cab Rubber 18,630 lbs (8,450 kg)
 Cab Steel 19,145 lbs (8,685 kg)
 15 ft 0 in (4,570 mm)
 17 ft 3 in (5,270 mm)
 24 ft 5 in (7,435 mm)
 16,565 lbs (7,514 kg)
 8,161 lbs (3,702 kg)
 7 ft 0 in (2,130 mm)
 10.3 rpm
 19,780 lbs (8,972 kg)

TB1140 SERIES 2

Cab Rubber 34,116 lbs (15,475 kg)
 Cab Steel 34,700 lbs (15,740 kg)
 18 ft 0 in (5,485 mm)
 20 ft 4 in (6,220 mm)
 28 ft 9 in (8,755 mm)
 22,188 lbs (10,064 kg)
 12,634 lbs (5,730 kg)
 8 ft 5 in (2,750 mm)
 13.4 rpm
 32,555 lbs (14,767 kg)

TB280FR

Cab Rubber 18,810 lbs (8,530 kg)
 Cab Steel 19,240 lbs (8,730 kg)
 14 ft 11 in (4,540 mm)
 14 ft 8.4 in (4,480 mm)
 23 ft 7.2 in (7,195 mm)
 16,335 lbs (7,409 kg)
 7,037 lbs (3,192 kg)
 6 ft 7 in (2,000 mm)
 10.0 rpm
 19,783 lbs (8,973 kg)

Yanmar / 4TNV88C

EPA Final Tier 4
 4 / 133.6 cu in (2.2 L)
 35.8 hp (26.7 kW)
 2,200 rpm
 1,430 rpm (139.1 Nm)
 7.8 qt (7.4 L)
 9.5 qt (9.0 L)
 18.5 gal (70.0 L)
 1.2 gal / hr (4.8 L / hr)
 12 volts / 40 amps

Yanmar / 4TNV86CT

EPA Final Tier 4
 4 / 127.6 cu in (2.1 L)
 47.6 hp (35.5 kW)
 2,400 rpm
 130.5 ft-lb @ 1,560 rpm (177.0 Nm)
 7.8 qt (7.4 L)
 11.6 qt (11.0 L)
 21.3 gal (81.0 L)
 1.6 gal / hr (6.3 L / hr)
 12 volts / 55 amps

Yanmar / 4TNV98CT

EPA Final Tier 4
 4 / 202 cu in (3.3 L)
 69.2 hp (51.6 kW)
 2,000 rpm
 227.2 ft-lb @ 1,300 rpm (308 Nm)
 10.8 qt (10.2 L)
 14.8 qt (14.0 L)
 33.8 gal (128.0 L)
 2.4 gal / hr (9.1 L / hr)
 12 volts / 80 amps

Isuzu / AM-4JJ1X Turbo-Intercooled

EPA Interim Tier 4
 4 / 183 cu in (3.0 L)
 103.3 hp (77.0 kW)
 2,000 rpm
 284 ft-lb @ 1,600 rpm (385.0 Nm)
 18.0 qt (17.0 L)
 19.5 qt (18.5 L)
 61.5 gal (233.0 L)
 3.32 gal / hr (12.6 L / hr)
 24 volts / 50 amps

Yanmar / 4TNV98CT

EPA Final Tier 4
 4 / 202 cu in (3.3 L)
 69.2 hp (51.6 kW)
 2,000 rpm
 227.2 ft-lb @ 1,300 rpm (308 Nm)
 9.9 qt (9.4 L)
 14.8 qt (14.0 L)
 26.3 gal (100.0 L)
 2.4 gal / hr (9.1 L / hr)
 12 volts / 80 amps

4

Steel 13.8 in (350 mm)

5 ft 5.1 in (1,653 mm)

opy 4.4 psi (30.2 kPa)

Cab 4.6 psi (31.6 kPa)

1.8 mph (2.9 km / hr)

3.3 mph (5.3 km / hr)

gal / min (115.8 L / min)

gal / min (64.9 L / min)

3,481 psi (24.0 MPa)

10.8 gal (41.0 L)

19.5 gal (74.0 L)

11 ft 4.3 in (3,462 mm)

12 ft 6.7 in (3,828 mm)

17 ft 9.6 in (5,425 mm)

8 ft 8.9 in (2,665 mm)

5 ft 8.5 in (1,740 mm)

8 ft 2.6 in (2,505 mm)

16 ft 8.2 in (5,085 mm)

11.6 in (295 mm)

1 ft 3.5 in (395 mm)

76° Left / 58° Right

5 ft 4 in (1,626 mm)

4 ft 5.7 in (1,365 mm)

5

Rubber 15.7 in (400 mm)

6 ft 8.7 in (2,050 mm)

Canopy 4.4 psi (30.2 kPa)

Cab 4.6 psi (31.5 kPa)

1.7 mph (2.8 km / hr)

3.0 mph (4.9 km / hr)

45.3 gal / min (171.5 L / min)

27.0 gal / min (102.2 L / min)

11.6 gal / min (43.9 L / min)

3,480 psi (24.0 MPa)

12.9 gal (49.0 L)

23.8 gal (90.0 L)

12 ft 9.4 in (3,895 mm)

13 ft 10.1 in (4,220 mm)

20 ft 1.4 in (6,130 mm)

9 ft 9.3 in (2,980 mm)

Rubber 6 ft 6.7 in (2,000 mm)

8 ft 5.4 in (2,575 mm)

18 ft 2.5 in (5,550 mm)

1 ft 1.1 in (330 mm)

1 ft 5 in (430 mm)

78° Left / 55° Right

6 ft 5.8 in (1,975 mm)

4 ft 3.1 in (1,300 mm)

5

Rubber 17.7 in (450 mm)

Steel 21.7 in (550 mm)

7 ft 3 in (2,210 mm)

Rubber 5.5 psi (37.8 kPa)

Steel 5.6 psi (38.9 kPa)

1.6 mph (2.6 km / hr)

3.1 mph (5.0 km / hr)

62.5 gal / min (236.6 L / min)

26.4 gal / min (100.0 L / min)

14.5 gal / min (55.0 L / min)

3,990 psi (27.5 MPa)

19.3 gal (73.0 L)

37.0 gal (140.0 L)

15 ft 0 in (4,580 mm)

17 ft 3 in (5,260 mm)

23 ft 11.1 in (7,290 mm)

12 ft 6.4 in (3,820 mm)

Rubber 7 ft 3 in (2,200 mm)

Steel 7 ft 7 in (2,300 mm)

8 ft 5 in (2,550 mm)

21 ft 10 in (6,660 mm)

1 ft 3 in (385 mm)

1 ft 8 in (500 mm)

70° Left / 60° Right

6 ft 8 in (2,030 mm)

5 ft 5 in (1,650 mm)

7

Rubber 20.0 in (500 mm)

Steel 24.0 in (600 mm)

9 ft 6 in (2,900 mm)

Rubber 6.57 psi (45.3 kPa)

Steel 6.80 psi (46.9 kPa)

1.9 mph (3.0 km / hr)

3.3 mph (5.3 km / hr)

75.3 gal / min (285.0 L / min)

59.0 gal / min (224.0 L / min)

14.5 gal / min (55.0 L / min)

4,977 psi (34.3 MPa)

25.1 gal (95.0 L)

56.8 gal (215.0 L)

18 ft 0 in (5,485 mm)

20 ft 4.9 in (6,220 mm)

28 ft 1 in (8,570 mm)

15 ft 2 in (4,620 mm)

Rubber 8 ft 2 in (2,490 mm)

Steel 8 ft 6 in (2,590 mm)

9 ft 3 in (2,815 mm)

25 ft 8 in (7,815 mm)

1 ft 6.7 in (465 mm)

1 ft 9.6 in (550 mm)

77° Left / 53° Right

7 ft 10 in (2,405 mm)

6 ft 9 in (2,057 mm)

5

Rubber 17.7 in (450 mm)

Steel 21.7 in (550 mm)

7 ft 3 in (2,210 mm)

Rubber 5.5 psi (38.1 kPa)

Steel 5.7 psi (39.5 kPa)

1.7 mph (2.7 km / hr)

3.4 mph (5.2 km / hr)

52.5 gal / min (198.0 L / min)

39.0 gal / min (148.0 L / min)

15.0 gal / min (58.0 L / min)

3,990 psi (27.5 MPa)

18.7 gal (71.0 L)

31.7 gal (120.0 L)

14 ft 11 in (4,540 mm)

14 ft 8.4 in (4,480 mm)

23 ft 1 in (7,045 mm)

11 ft 5.5 in (3,495 mm)

Rubber 7 ft 3 in (2,200 mm)

Steel 7 ft 7 in (2,300 mm)

8 ft 11.4 in (2,725 mm)

20 ft 7.4 in (6,285 mm)

1 ft 0.3 in (315 mm)

1 ft 7.6 in (500 mm)

30° Left / 15° Right

5 ft 3.5 in (1,610 mm)

4 ft 2.4 in (1,280 mm)



TAKEUCHI

US Headquarters
Pendergrass, Georgia
706.693.3600
sales@takeuchi-us.com

www.takeuchi-us.com

© 2015 Takeuchi Manufacturing (U.S.), Ltd. All Rights Reserved.
Printed in the U.S.A. In accordance with our established policy of
continued improvement, specifications and features are subject to
change without notice. Pictures may show optional equipment.
FORM: Excavators FB Dec. 2015

