

Kubota



KUBOTA COMPACT EXCAVATOR

KX

KX057-4

Superior 5-ton compact excavator with the right power and flexibility for most all of your needs.



Set to redefine the entire 5-ton class, this Kubota compact excavator with a deluxe cab puts you in luxury and on top of almost any challenge.

HYDRAULIC ANGLE BLADE

Save time and work more efficiently. With a simple movement of the dozer lever, the hydraulic angle blade can be angled to the right or left to push soil to the side as the machine moves forward, eliminating the need for repetitive repositioning at right angles when backfilling trenches.

25° Pivot Angle

1. Bolt-on Cutting Edge*

The cutting edge protects the angle blade during heavy-duty dozing operations. The reversible cutting edge is divided into two sections to easily invert the edge for continued use.

**Standard on Angle Blade models.*

2. Durable Fixed Hook

The thick side plate of the angle blade enhances the strength of the fixed hook. The hole is enlarged to accommodate thicker chains for a more secured tie-down.

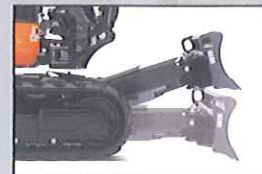


Hydraulic Dozer Control Lever

A hydraulic-type dozer control lever provides smooth and easy operation.

Generous Approach Angle

The angle blade boasts an approach angle of 28°, allowing the KX057-4 to climb over obstacles with ease.



Tight Spots

The angle blade lets you work efficiently in confined spaces, alongside walls, and near busy roads. No wider than the tracks, it's also easy to transport between jobs.



Easy Operation

Angle blade operation has been enhanced for easier control. Up, down and float movements are made with a single lever, while left and right angle positioning is made by the rocker switch on top of the lever.



Float Position

The float function is a standard feature on the KX057-4*. Ground finishing work can be completed quickly and simply without the need to adjust the dozer height. After backfilling, simply travel backwards along the covered ditch with the dozer in the float position.

**Standard on both angle blade & standard blade models.*





DELUXE INTERIOR

On the KX057-4, your comfort truly comes first. The luxurious cab features a wider entrance, generous legroom and a deluxe seat. The Roll-over Protective Structure (ROPS) and Falling Object Protection Structure (FOPS) maximize safety. Operability is greatly enhanced with more easy-to-use features than ever before.

Easy-open Front Slide Window

Unlike many excavator windows, the front glass window of the KX057-4 opens with ease. Just flip the latches on the window sides and slide it up. A gas-assist mechanism makes this action almost effortless.



Wider Entrance

The KX057-4 features a much wider door and more ample foot space, making it a breeze to get on and off the excavator.





Kubota

A

A. Deluxe Suspension Seat

Designed and engineered to fit better and to keep you working longer comfortably, Kubota's high-back suspension seat reduces strain and minimizes operator fatigue. It reclines to accommodate your individual posture, and offers weight compensation, firm and adjustable wrist support and retractable seat belts.

B. 2-speed Travel Switch

By placing the 2-speed travel switch on the dozer lever, dozing operations can be done faster and easier.



C. Cup Holder

With the convenience of a bigger cup holder, you can quench your thirst and work longer without leaving the cab.

D. Adjustable Wrist Rest

A thoughtfully designed wrist rest enhances operation and reduces operator fatigue.

E. Air Conditioning

The overall air circulation in the cab has been improved, thanks to a stronger cooling/heating unit and the positioning of six vents around the operator to offer better all-round comfort.



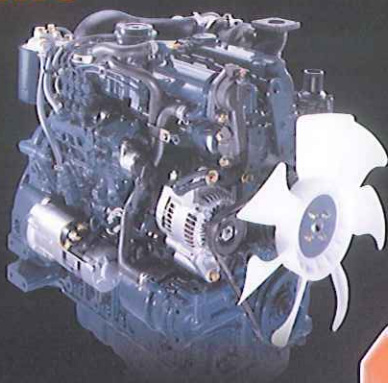
TPSS

The Two-Pattern Selection System positioned under the seat allows the operator to shift control styles conveniently while seated. A simple turn of a switch is all it takes to select between the ISO pattern and the SAE backhoe pattern.



Kubota Original Direct Injection Engine

The KX057-4 is powered by Kubota's impressive 47.6 HP direct injection engine. Engineered with the power to maximize digging and lifting performance, it also delivers minimized noise, vibration and fuel consumption.



Adjustable Maximum Oil Flow Control For Auxiliary Circuits 1 & 2 (Optional)

The maximum oil flow settings of both circuits are conveniently adjustable from the digital panel – no additional tools or complex manual adjusting procedures are necessary. You can even program up to five oil flow rates corresponding to specific attachments into memory on the digital panel.



SUPERIOR PERFORMANCE

Combining the power for demanding jobs and the versatility to work in any condition, the Kubota KX057-4 is ready to take on most challenges. It's designed with excellent stability to work with a variety of attachments. Versatility is greatly enhanced with precise oil flow control for auxiliary circuits. With upgraded digging and lifting power, smoother travel performance and improved versatility, this Kubota truly has what you need to get the job done well.



Increased Boom Lifting Capacity

The KX057-4 features a significantly improved boom lifting capacity.

Enhanced Digging Force

The KX057-4 delivers an impressive bucket digging force of 11,177 lbs. Its powerful and well-balanced arm and bucket allow the operator to dig faster and more efficiently even in the toughest conditions.

Thumb Bracket And Relief Valves

The hydraulic thumb makes short work of a variety of loading and material handling jobs. The factory installed mount brackets and hydraulics significantly reduce the time needed to mount accessories.

Increased Travel Speed

Featuring increased maximum high and low travel speeds of 3.1 mph and 1.8 mph respectively, the KX057-4 truly takes productivity to new heights.

Increased Traction Force

The traction, when operating in low speed, has been increased to 14,480 lbs. This helps ensure an efficient and productive day on the job.

Load Sensing Hydraulic System

Kubota's improved 3-pump load sensing hydraulic system ensures smoother operation, regardless of load size. It allows hydraulic oil to flow according to the specific range of the operator's lever motion. The result is greater fuel economy and smoother travelling.

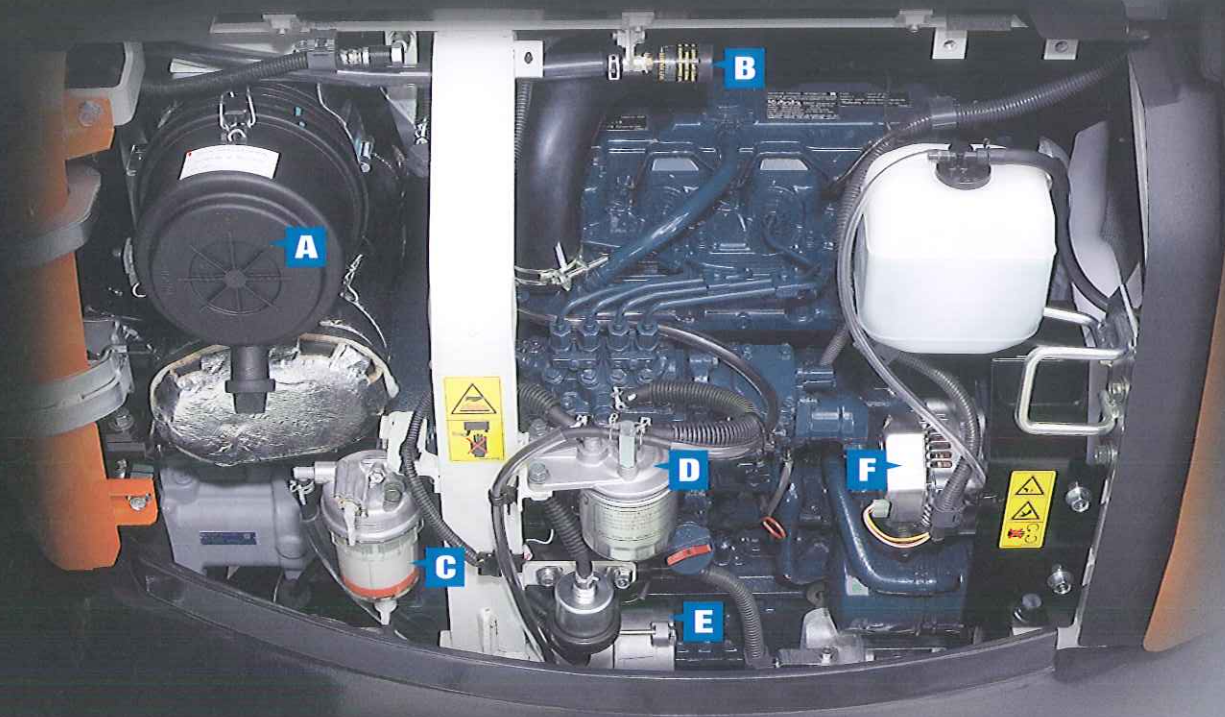
Auto-shift

The auto-shift system enables automatic travel shift from high to low depending on traction effort and terrain. This gives smoother simultaneous operations when dozing and turning.

One-sided Engine Maintenance

Kubota has made routine maintenance extremely simple by consolidating primary engine components onto one side for easier access. Engine and other vital components can be inspected quickly and easily.

- A.** Dual Element Air Cleaner
- B.** Air Cleaner Monitor
- C.** Water Separator
- D.** Fuel Filter
- E.** Starter Motor
- F.** Alternator



Tool Box

A large tool box is positioned within the side hood so necessary tools for small checkups are always within easy reach.



Refuelling

When refuelling, simply press the refuelling signal button to monitor the progress. The beeping signal accelerates as the fuel approaches full and thus avoiding spillage.



MAINTENANCE & SAFETY

Although your Kubota excavator is state-of-the-art, its maintenance doesn't get much easier. Thanks to the full-opening rear and right side hoods, engine, control valves and various components are accessible for easy inspection and repair.

Steel Panels

The KX057-4 features long-lasting side panels that open easily for quick inspection and routine maintenance. The panels are located inside the counterweight edge for protection and durability.

Parking Brake

A travel negative brake comes as a standard safety feature on the KX057-4 for added peace of mind during transportation or parking on hilly areas.

Grease Gun Holder

A convenient space within the side hood is designed to keep the grease gun handy for daily servicing.



NEW DIGITAL PANEL

Standard Mode



Following the excellence of Kubota's Intelligent Control System, the new digital panel puts convenience at the operator's fingertips. Featuring easier button operation, the user-friendly digital panel is positioned to the front right corner of the operator. This operator-facing wider display greatly improves visibility. With easier access, simpler settings, easy-to-read indicators and alerts, you'll always be aware of the excavator's functioning status.

Operation History Record

Operation history is automatically recorded on the KX057-4. You can trace back up to 90 days of the machine's usage dates by simply checking the built-in calendar.



Service Mode



Warning Mode



Operation History Record



Max. Oil Flow Setting (AUX1 and optional AUX2)

Convenient Pre-installed Attachment Icons



AUX (Standard)



Tilt Bucket



Breaker



Clamshell



Auger



Grapple



Rotary Grapple



Brush Cutter

Kubota Original Anti-theft System

Your KX057-4 is protected by Kubota's industry-leading anti-theft system. Only programmed keys will enable the engine to start up. Attempting to start with an un-programmed key will activate the alarm. Newly enhanced features include an alert to remind the operator to extract the key after operation, and an LED to alert potential thieves that the system is activated.

Protected by KUBOTA
ANTI-THEFT
SYSTEM



The red programming key programs the individual keys. The individual black keys start the engine.

KX057-4 OPTIONS

STANDARD EQUIPMENT

Safety system

- Engine start safety system
- Travel motor with disc brake
- Swivel motor with disc brake
- Kubota original anti-theft system
- All hydraulic control

Working equipment

- Auxiliary hydraulic circuit 1
- 2 working lights on cab and 1 light on the boom
- Dozer blade with float function
- Thumb bracket and relief valve

Operator's space

- ROPS/FOPS canopy
- Weight-adjustable full suspension seat
- Retractable seat belt
- Hydraulic pilot control levers with wrist rests
- Travel levers with foot pedals
- Two pattern selection system
- Digital panel
- 12V power source
- Cup holder
- Horn

Engine/Fuel system

- Double element air filter
- Auto idling system
- Water separator with drain cock

Undercarriage

- Dozer blade with float
- 400 mm rubber track
- 1 × upper track roller
- 5 double-flange track rollers on each side
- 2-speed travel switch on dozer lever
- 2-speed travel with auto-shift

Hydraulic system

- Pressure accumulator
- Hydraulic pressure checking ports
- Straight travel circuit
- Third line hydraulic return
- 3-pump load sensing system
- Adjustable maximum oil flow on auxiliary hydraulic circuits 1 (and 2)
- Auxiliary switch (AUX1) on right control lever

Others

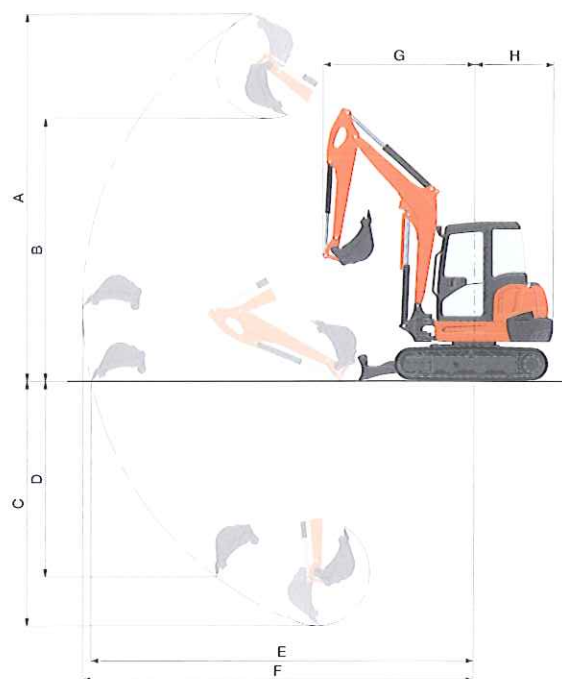
- Tool box
- Grease gun holder

OPTIONAL EQUIPMENT

- Cab with A/C
- Canopy lights
- Rear working lights
- Beacon lights
- 1'3.7" (400 mm) steel track for Angle blade model
- Additional auxiliary hydraulic circuit 2 (adjustable max. oil flow control)
- Angle blade with float function and BOE
- Travel alarm
- Spark arrest muffler

WORKING RANGE

Model				KX057-4
A	Max. digging height	ft. in. (mm)		18'10" (5740)
B	Max. dumping height	ft. in. (mm)		13'8.6" (4180)
C	Max. digging depth	ft. in. (mm)		12'8.2" (3865)
D	Max. vertical digging depth	ft. in. (mm)		5'7.3" (1710)
E	Max. digging radius at ground	ft. in. (mm)		20'0.5" (6110)
F	Max. digging radius	ft. in. (mm)		20'5.7" (6240)
G	Min. turning radius	W/O swing	ft. in. (mm)	7'11.3" (2420)
		W swing	ft. in. (mm)	6'9.1" (2060)
H	Min. tail turning radius	ft. in. (mm)		4'2" (1270)

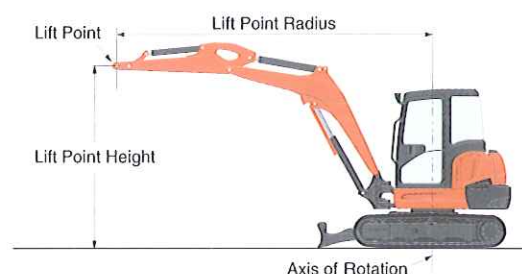


LIFTING CAPACITY

Canopy rubber

LIFT POINT HEIGHT (ft)		LIFTING CAPACITY OVER-FRONT BLADE DOWN unit=1000 lbs			LIFTING CAPACITY OVER-SIDE unit=1000 lbs		
		LIFT POINT RADIUS (ft)			LIFT POINT RADIUS (ft)		
		12	16	MAX	12	16	MAX
GL	10	2.33	2.28	1.96	2.30	1.43	1.36
	8	2.63	2.33	1.95	2.24	1.42	1.26
	4	3.41	2.55	2.05	2.09	1.36	1.16
	0	3.89	2.67	2.37	1.96	1.31	1.19

Machine with canopy and rubber crawler, without bucket

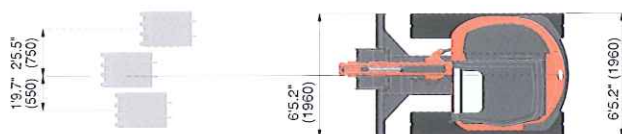


SPECIFICATIONS

Model				KX057-4	KX057-4 Angle Blade
Type of ROPS / FOPS				Canopy / Cab	
Type of tracks				Rubber	Rubber / Steel
Engine	Model			Kubota V2607-DI	
	Output (SAE J1995 gross)		HP (kW) / rpm	47.6 (35.5) / 2200	
	Output (SAE J1349 net)		HP (kW) / rpm	45.4 (33.8) / 2200	
	Displacement		cu. in. (cc)	159.6 (2615)	
Dimensions	Overall length		ft. in. (mm)	18'1.3" (5520)	
	Overall height		ft. in. (mm)	8'4.4" (2550)	
	Overall width		ft. in. (mm)	6'5.2" (1960)	
	Min. ground clearance		ft. in. (mm)	1'0.2" (310)	
Hydraulic system	Pump capacity		GPM (ℓ/min)	14.8 (56.1) Variable × 2 / 9.8 (37.0) Gear × 1	
	Auxiliary hydraulic flow	AUX1 / AUX2	GPM (ℓ/min)	19.8 (75) / 9.8 (37)	
	Max. breakout force	Bucket / Arm	lbs. (kgf)	11177 (5070) / 5644 (2560)	
Drive system	Travel speed		Low / High	mph (km/h)	
	Max. traction force		Low speed	lbs. (kgf)	
	Tumbler distance		ft. in. (mm)	6'6.3" (1990)	
	Crawler length		ft. in. (mm)	8'2.4" (2500)	
	Shoe width	Rubber / Steel	ft. in. (mm)	1'3.7" (400)	
	Ground contact pressure	Rubber Canopy / Cab	psi (kgf/cm²)	4.52 (0.318) / 4.59 (0.323)	
		Steel Canopy / Cab	psi (kgf/cm²)	- / 4.76 (0.335) / 4.83 (0.340)	
Swing system	Unit swing speed		rpm	9.3	
	Boom swing angle	Left / Right	degree	70 / 55	
Blade	Dimensions	Width	ft. in. (mm)	6'5.2" (1960)	
		Height	ft. in. (mm)	1'4.1" (410)	1'4.7" (425)
	Max. lift above ground		in. (mm)	17.3" (440)	
	Max. drop below ground		in. (mm)	16.1" (410)	
	Angle	Left / Right	degree	- / 25	
Hydraulic oil (Reservoir / System)			gal (ℓ)	11.9 (45) / 20.9 (79)	
Fuel reservoir			gal (ℓ)	19.8 (75)	
Operating weight (Including operator's weight @ 175 lbs.)	Rubber	Canopy / Cab	lbs. (kgf)	12150 (5510) / 12345 (5600)	
	Steel	Canopy / Cab	lbs. (kgf)	- / 12790 (5800) / 12985 (5890)	

The company reserves the right to change the above specifications without notice. This brochure is for descriptive purposes only. Please contact your local Kubota dealer for warranty information. For your safety, Kubota strongly recommends the use of a Rollover Protective Structure (ROPS) and seat belt for almost all applications.

DIMENSIONS



Unit: ft. in. (mm)



KUBOTA TRACTOR CORPORATION

Kubota Tractor Corporation, 3401 Del Amo Boulevard, Torrance CA 90503
 Western Division: 1175 S. Guild Ave., Lodi, CA 95240 Tel (209) 334-9910
 Central Division: 14855 FAA Boulevard, Fort Worth, TX 76155 Tel (817) 571-0900
 Northern Division: 6300 at One Kubota Way, Groveport, OH 43125 Tel (614) 835-1100
 Southeast Division: 1025 Northbrook Parkway, Suwanee, GA 30024 Tel (770) 995-8855

Visit our web site at: www.kubota.com



Kubota®

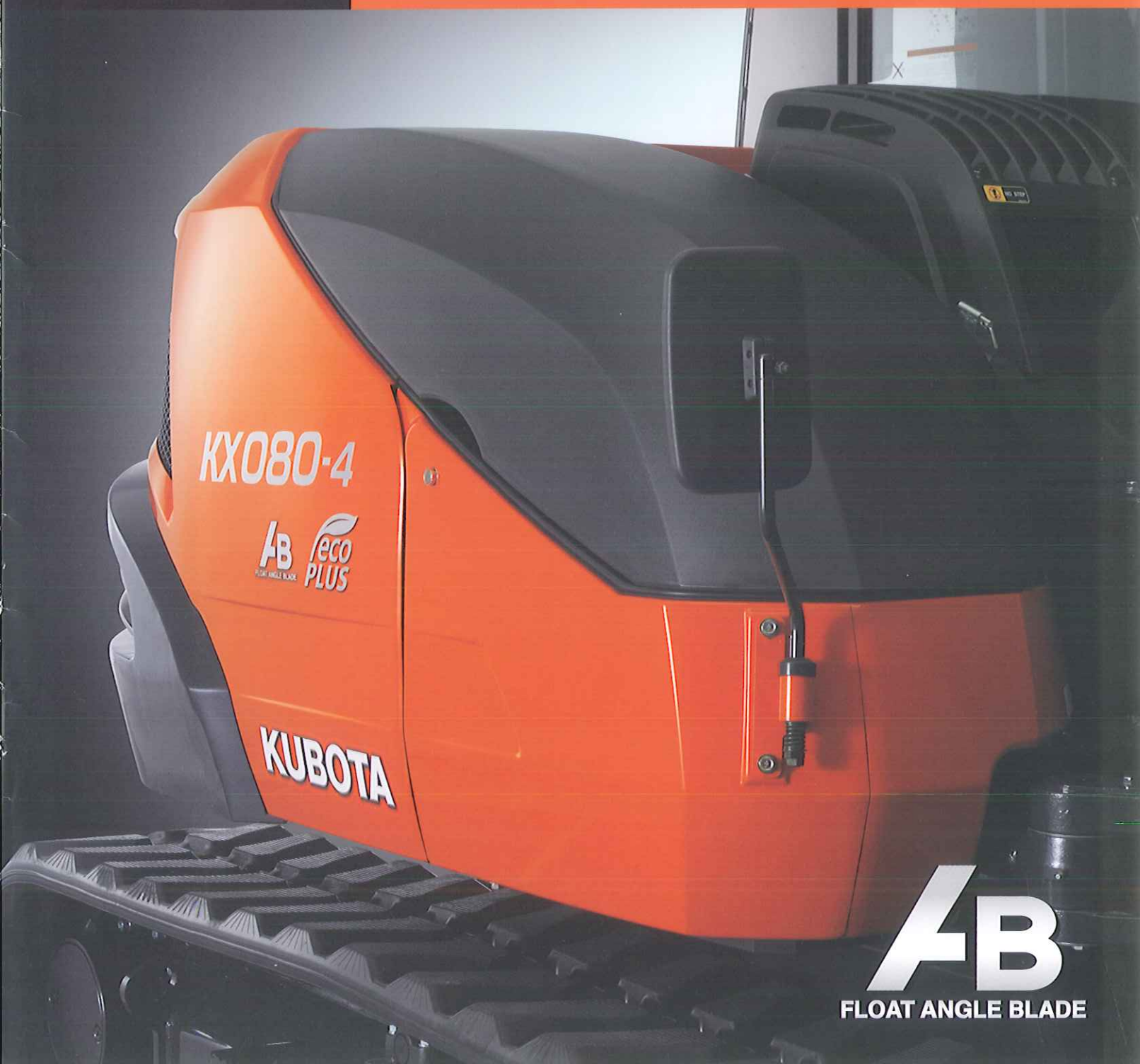


KUBOTA POWER UTILITY EXCAVATOR

KX

KX080-4

Kubota's flagship 8-ton Power Utility Excavator combines performance with superior digging force.



AB

FLOAT ANGLE BLADE

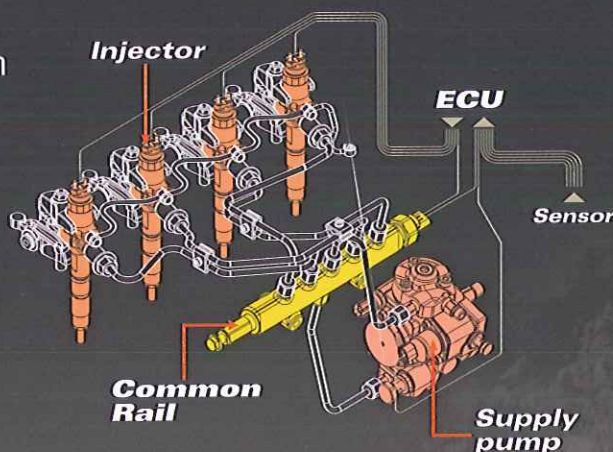
**Kubota's largest and most advanced
Power Utility Excavator. Heavy-duty
strength meets clean-running performance!**

CLEAN AND POWERFUL EXC

Kubota's CRS engine gives you the high torque you need to power through any tough task. The CRS electronically controls the timing and amount of fuel injection to lead to less engine noise and better fuel efficiency. In addition, the CRS helps reduce emissions and makes the KX080-4 EPA Tier IV-compliant.

Common Rail System and Diesel Particulate Filter (DPF) Muffler

The Common Rail System (CRS) electronically controls the fuel injection timing and amount in stages rather than all at once for optimal combustion. The results are great efficiency, better fuel economy and less engine noise. Its combination with the Exhaust Gas Recirculation (EGR) and Diesel Particulate Filter (DPF) Muffler reduces emissions to make the KX080-4 Tier IV-compliant.



Automatic regeneration system

Kubota's original automatic regeneration system automatically burns accumulated particulate matter (soot) in the DPF muffler to keep the muffler clean for longer operation. For safety reasons, automatic regeneration can be turned off with the inhibit switch when the excavator is operating in areas that are prone to fires.



KUBOTA

AVATOR



Introducing ECO PLUS

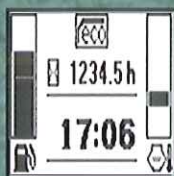
Kubota's original ECO PLUS prioritizes fuel economy, and supports the environment.

For tough digging applications, use Standard Mode and experience a 5% productivity improvement over the prior model and use less fuel, up to 12% less.

Activate Eco Mode with the flick of a switch for up to 7% fuel savings over Standard Mode.



Eco Mode Switch



Eco Mode Indicator

STANDARD MODE

- Improved Productivity • Lower Fuel Consumption

Compared to Prior Model



ECO MODE

- Focus on Lower Fuel Consumption



**Compared to Standard Mode*

An array of functions makes operations easier for a variety of tasks.

WORKING PERFORMANCE

Proportional Flow Control of Auxiliary Circuits (AUX1/2) and Maximum Oil Flow Settings

An auxiliary circuit (AUX2) comes standard on the KX080-4. The convenient thumb-operated switch allows easy proportional flow control of the auxiliary circuit, while a forefinger-operated on/off switch enables simple operation of special applications that require a constant oil flow. The maximum oil flow setting is conveniently adjustable from the digital panel. You can even program up to five oil flow rates corresponding to specific attachments so they can be quickly retrieved for the next job.



Adjustable Maximum Oil Flow Control for Auxiliary Port

This unique function lets you control the oil flow and eliminates the hassle of using tools to change settings manually. The system will even store your settings for the next time you need it. Adjustable oil flow enhances performance and saves fuel.

Auto Idling System

Save fuel with Kubota's Auto Idle. Reduce engine RPM instinctively when high engine speed isn't needed. When the control levers are in neutral for more than 4 seconds, the engine RPM automatically idles. Move any control lever and the engine RPM immediately returns. This innovative feature reduces noise and exhaust emissions while reducing operating costs.



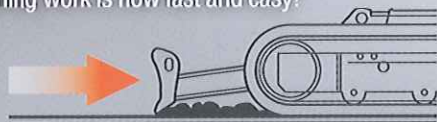
AB
FLOAT ANGLE BLADE

Hydraulic Angle Blade (option)

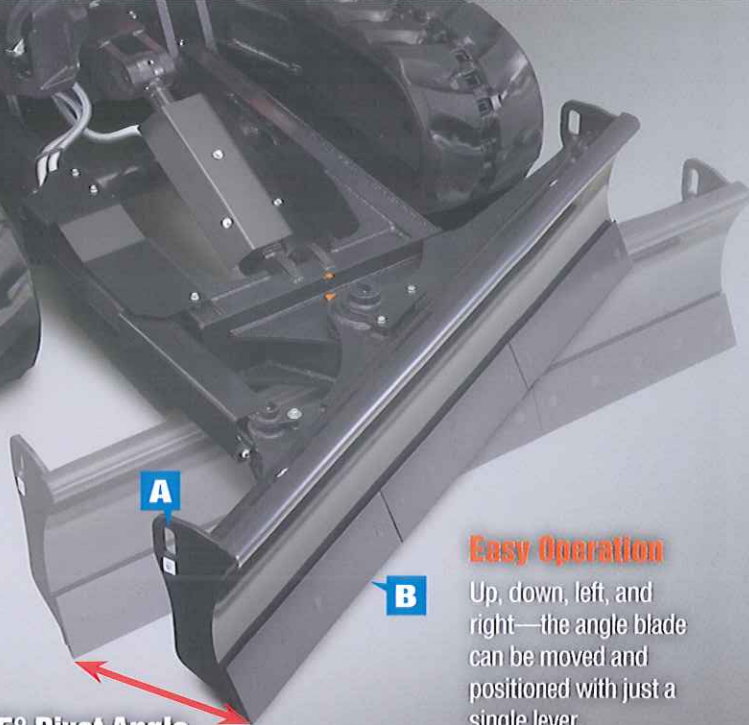
Save time and work more efficiently. With a simple movement of the dozer lever, the hydraulic angle blade can be angled to the right or left to push soil to the side as the machine moves forward, eliminating the need for repetitive repositioning at right angles when backfilling trenches.

Float Position

You don't need to adjust the dozer height to make a clean ground surface—after backfilling, just travel backward along the covered ditch with the dozer in the float position. Ground finishing work is now fast and easy!



25° Pivot Angle



Easy Operation

Up, down, left, and right—the angle blade can be moved and positioned with just a single lever.

A. Durable Fixed Hook

The thick side plate of the angle blade enhances the strength of the fixed hook. The hole is enlarged to accommodate thicker chains for a more secured tie-down.

B. Bolt-on Cutting Edge*

The cutting edge protects the angle blade during heavy-duty dozing operations. The reversible cutting edge is divided into three sections to easily invert the edge for continued use.

**Standard on Angle Blade models.*



Tight Tail Swing and Compact Machine Width

Thanks to its contoured, tight tail design created by the shorter rear overhang, the KX080-4 has excellent stability, can handle a wider range of loads, and can work in more restrictive spaces. The compact 7'2.6" width of the under-carriage makes it ideal for working in close conditions, and much easier to transport between job sites.

Industrial Digging Force

You need exceptional power when trenching through compacted soil. With the KX080-4, elevated productivity levels are certain with the combination of 14,660 lbs. bucket force and 8,554 lbs. arm forces. The KX080-4 powers through those demanding applications so that you can quickly move on to the next job.

Auto-Shift

Now your excavator moves how you want it to—even at high speeds. When working with heavy loads, making turns or backfilling trenches, the system automatically downshifts for more torque. This shift is so smooth and seamless you'll feel as though you've never left high speed.

3-pump Load-Sensing Hydraulic System

Kubota's load-sensing hydraulic system guarantees smoother handling, regardless of load size. It allows hydraulic oil to flow according to your precise needs. The KX080-4's new 3-pump load-sensing system also allows you to perform simultaneous operations, such as dozing and utilizing front attachments, without losing speed.

7' 2.6" (2,200 mm)

New Digital Panel

Informative, interactive and functional, Kubota's Intelligent Control System LCD panel accurately displays timely diagnostic readings and routine maintenance alerts. You'll be kept informed of your current working conditions, engine RPM, temperature and oil levels. These new features help reduce downtime and costly repair fees.



DELUXE INTERIOR

A spacious cab and new digital panel bring comfort to any job.

Easy-open Front Window

Unlike many excavator windows, the front glass window of the KX080-4 opens with ease. Just flip the latch on the side of the window and slide it up. A gas-assist mechanism makes this action almost effortless.



New Air Conditioner

Overall air circulation in the cab has been improved, thanks to a stronger cooling/heating unit and the positioning of six vents. Airflow is also directed towards the operator's face for better all-round comfort.



A. Deluxe Suspension Seat

Designed and engineered with comfort in mind, Kubota's high-back suspension seat reduces strain and minimizes operator fatigue. It reclines to accommodate your individual posture, and offers weight compensation, firm wrist support and retractable seat belts.

B. Cup Holder

With the convenience of a bigger cup holder, you can quench your thirst and work longer without leaving the cab. Or store your cell phone. The charging port is located conveniently close by.

C. Movable Console

Raise the safety control lever and the console moves with it, providing more room for entry and exit. To prevent unexpected machine movement during entry or exit, all control levers are then disabled until the console is back in place.

D. TPSS

The Two-Pattern Selection System can shift control styles, whether it's the ISO pattern or the SAE backhoe pattern, with the simple turn of a switch.



Window Guard (Optional)

Operators need protection from flying chips and debris when using some attachments. On some sites anti-vandalism is important. Kubota provides the window guard mounting points around the front window as a standard feature.

Advanced Visibility Mirrors

Kubota has reshaped the rear-view mirror to offer a wider range of visibility. Together with the two side-view mirrors, you get a better view of your worksite, as well as your immediate surroundings.



Cab Guttering

The KX080-4 now features a guttering system to the cab's roof. This helps prevent rainwater from entering the cab, even when the window is open on a rainy day.

Two-Piece Hose Design

Kubota's innovative two-piece hose design for the dozer blade reduces hose replacement time by nearly 60% compared to non-joint types. This design virtually eliminates the need to enter the machine for maintenance.

Underbody Cover

The underbody beneath the engine features a mesh cover to prevent gravel and soil from entering.

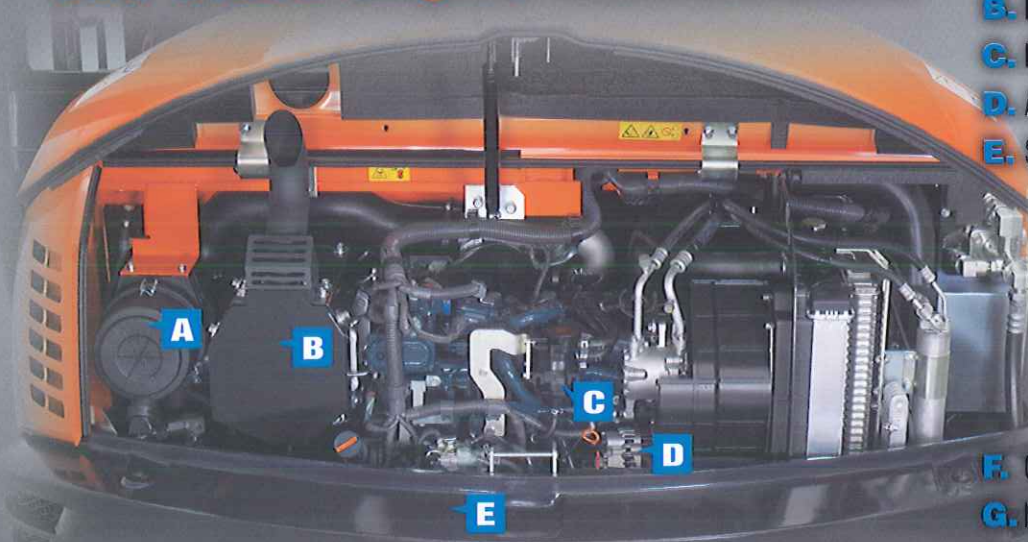
Steel Crawler (Optional)

A rugged steel crawler is an excellent option for using your KX080-4 on worksites that may compromise the durability or integrity of the standard rubber crawler. In addition to an 18-inch crawler, an extra-wide 24-inch model is available for increased floatation.

MAINTENANCE & SAFETY

Designed for dependability, built to last.

One-sided Engine Maintenance

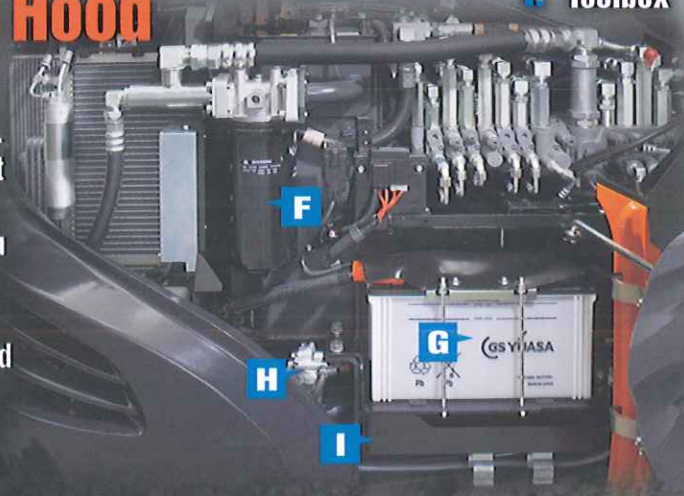


- A. Dual Element Air Cleaner
- B. DPF Muffler
- C. Fuel Filter
- D. Alternator
- E. Starter Motor

- F. Oil Filter
- G. Battery
- H. Water Separator
- I. Toolbox

Triple Opening Hood

All three of the excavator's access panels can open at once. This allows you to easily inspect and view the centrally located components of the KX080-4. You can easily access the hydraulic components under the center hood, or the battery, oil filter and tool box under the right hood. Maintaining your excavator has never been this easy.



Swivel Negative Brake

The swivel negative brake automatically locks the swivel function in its current position. This prevents unexpected machine movement. It's particularly useful during work on inclines or when transporting the excavator between worksites.

Variable Speed Fan

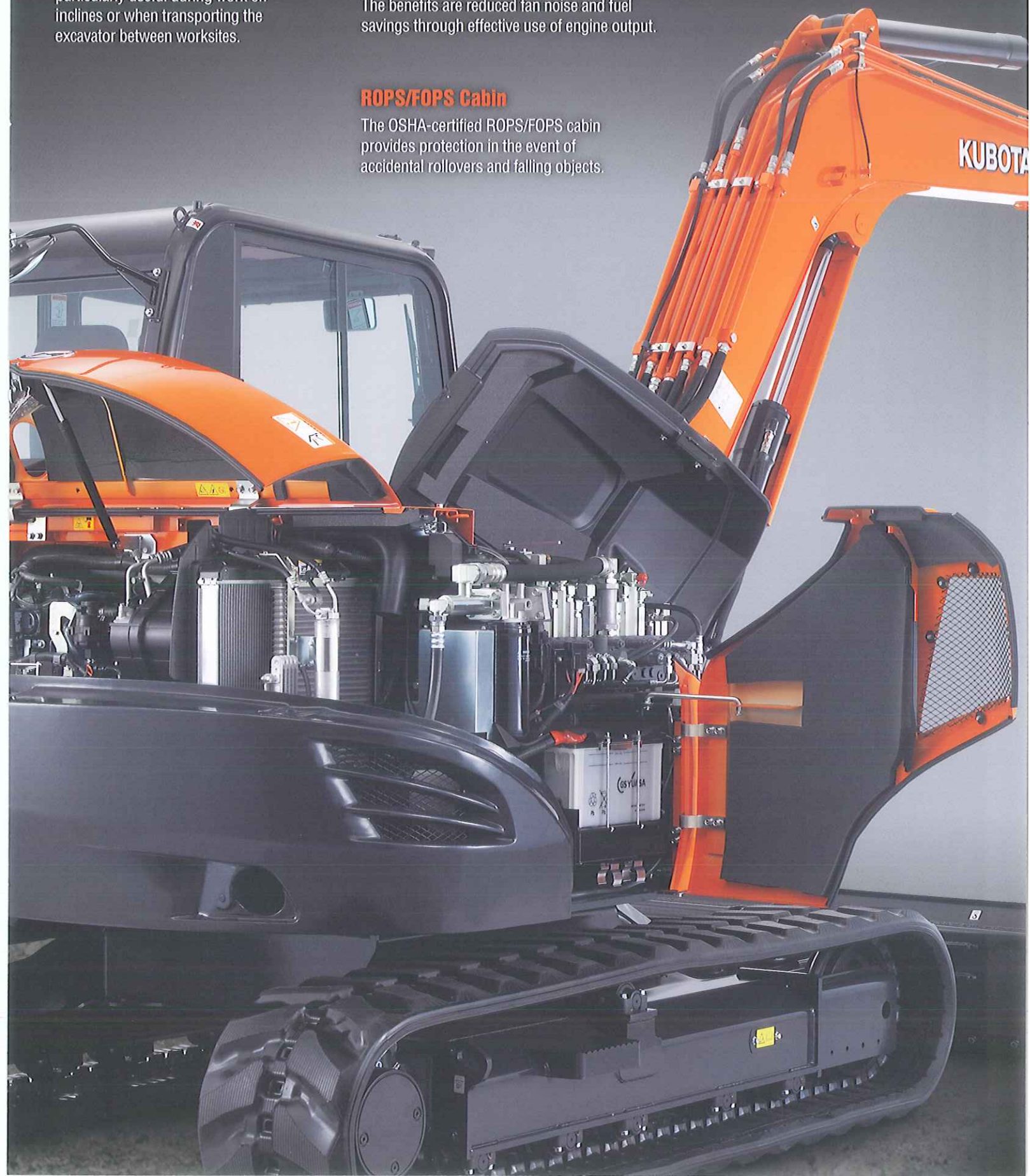
The variable speed fan drive provides the right amount of cooling efficiency by regulating the engine fan speed according to the ambient temperature after the air passes through the radiator. The benefits are reduced fan noise and fuel savings through effective use of engine output.

Double Structure Muffler

The double structure muffler controls increases in muffler temperature caused by automatic regeneration of the DPF.

ROPS/FOPS Cabin

The OSHA-certified ROPS/FOPS cabin provides protection in the event of accidental rollovers and falling objects.



NEW DIGITAL PANEL



Standard Mode

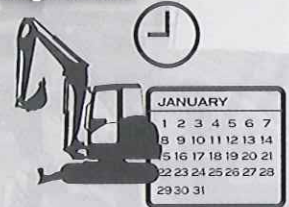
- A. Hour Meter
- B. Coolant Temperature
- C. Clock
- D. Fuel Level
- E. Engine RPM



Following the excellence of Kubota's Intelligent Control System, the new digital panel puts convenience at the operator's fingertips. Featuring easier button operation, the user-friendly digital panel is positioned to the front right corner of the operator. This operator-facing wider display greatly improves visibility. With easier access, simpler settings, easy-to-read indicators and alerts, you'll always be aware of the excavator's functioning status.

Operation History Record

Operation history is automatically recorded on the KX080-4. You can trace back up to 90 days of the machine's usage dates by simply checking the built-in calendar.



Service Mode



Warning Mode



Operation History Record



**Max. Oil Flow Setting
(AUX1 and AUX2)**

Automatic regeneration mode

The automatic regeneration system automatically burns particulate matter (soot) that accumulates in the diesel particulate filter (DPF) muffler. The soot is burned when the engine is operating at sufficient speed for regeneration. If the engine speed is lower than the required level for regeneration, the indicator requests an increase in the engine speed to keep the accumulation level low and the DPF clean. A service call or DPF filter replacement is required when the accumulated soot reaches a level that reduces the engine speed.



KX080-4 OPTIONS

STANDARD EQUIPMENT

Safety system

- Engine start safety system
- Travel motor with disc brake
- Swivel motor with disc brake
- All hydraulic control

Working equipment

- Auxiliary hydraulic circuit 1 and 2 (proportional control)
- 2 working lights on cab and 1 light on the boom
- Thumb bracket and relief valve

Operator's space

- ROPS/FOPS cab with A/C
- Digital panel with diagnosis function
- Weight-adjustable full suspension seat
- Retractable seat belt

- Hydraulic pilot control levers with wrist rests
- Travel levers with foot pedals
- Two pattern selection system
- 12V power source
- Cup holder
- Horn

Engine/Fuel system

- Double element air filter
- Auto idling system
- Water separator with drain cock

Undercarriage

- Dozer blade with float function
- 17.7" (450mm) rubber track
- 1 x upper track roller
- 5 double-flange track rollers on each side
- 2-speed travel switch on dozer lever
- 2-speed travel with auto-shift

Hydraulic system

- 3-pump load sensing system
- Pressure accumulator
- Hydraulic pressure checking ports
- Third line hydraulic return
- Adjustable maximum oil flow on auxiliary hydraulic circuits 1 and 2

Others

- Tool box
- Grease gun holder

OPTIONAL EQUIPMENT

- Beacon lights
- 17.7" (450mm) steel track
- 23.6" (600mm) steel track
- Angle blade with float function and BOE
- Travel alarm

The possibilities are nearly endless with our full range of implements.

Implements are the key to getting the most out of your excavator. Use the ones listed below to greatly expand your machine's capabilities. Or, use your own. The Kubota KX080-4 allows you to attach excavator implements you may already have—even ones without a Kubota name on it.



● Hydraulic Thumb



● Excavating Rake



● Grading Bucket



● Ripper

● Hydraulic Breaker

● Grading Blade

● Compaction Wheel

● Vibratory Compactor

● Tilt Bucket

● Auger

● Grapple

● Brush Cutter

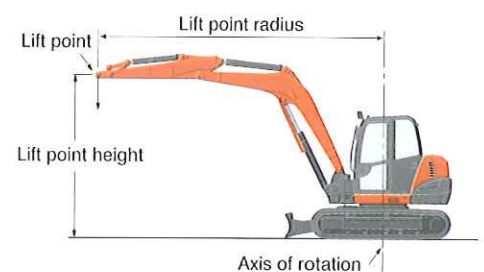
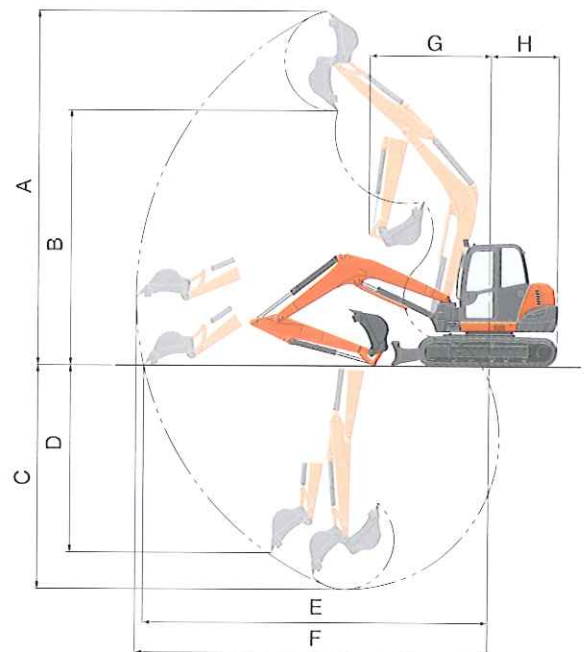
WORKING RANGE

Model			KX080-3
A	Max. digging height	ft. in. (mm)	23'11.4" (7300)
B	Max. dumping height	ft. in. (mm)	17'2.7" (5250)
C	Max. digging depth	ft. in. (mm)	15'1.1" (4600)
D	Max. vertical digging depth	ft. in. (mm)	12'7.6" (3850)
E	Max. digging radius at ground	ft. in. (mm)	23'6.3" (7170)
F	Max. digging radius	ft. in. (mm)	24'0.6" (7330)
G	Min. turning radius	W/O swing ft. in. (mm)	8'2.0" (2490)
		W swing ft. in. (mm)	6'6.7" (2000)
H	Min. tail turning radius	ft. in. (mm)	4'9.5" (1460)

LIFTING CAPACITY

LIFT POINT HEIGHT (ft)		LIFTING CAPACITY OVER-FRONT BLADE DOWN unit=1000 lbs			LIFTING CAPACITY OVER-SIDE unit=1000 lbs		
		LIFT POINT RADIUS (ft)			LIFT POINT RADIUS (ft)		
		12	18	MAX	12	18	MAX
GL	12	3.6	3.4	3.4	3.6	2.1	1.9
	8	5.0	3.7	3.5	3.6	2.0	1.6
	4	6.5	4.0	3.5	3.5	1.9	1.5
	0	7.2	4.2	3.6	3.2	1.8	1.6

Machine with cabin and rubber crawler, without bucket

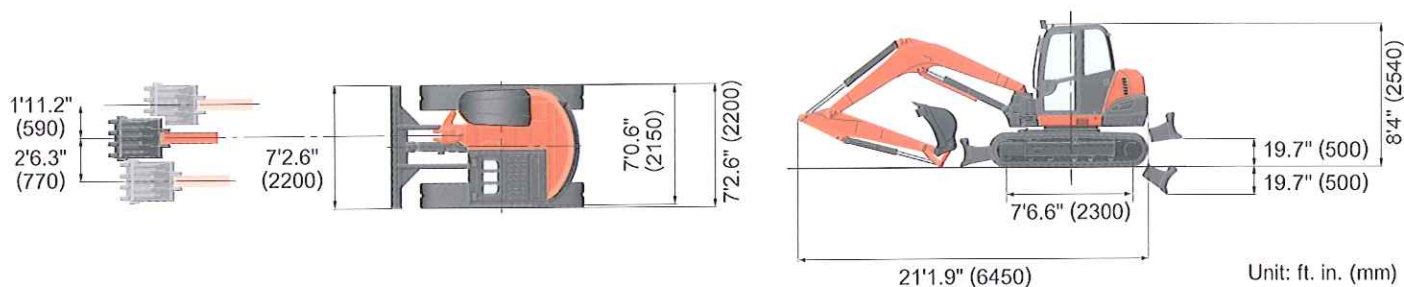


SPECIFICATIONS

Model				KX080-4		KX080-4 Angle Blade	
Type of cabin				ROPS / FOPS cabin			
Type of tracks				Rubber / Steel			
Engine	Model			Kubota V3307 DI-T4			
	Output (SAE J1995 gross)		HP (kW)/rpm	70.0 (52.2) / 2000			
	Output (SAE J1349 net)		HP (kW)/rpm	67.3 (50.2) / 2000			
	Displacement		cu. in. (cc)	203.3 (3331)			
Dimensions	Overall length		ft. in. (mm)	21'1.9" (6450)			
	Overall height		ft. in. (mm)	8'4" (2540)			
	Overall width		ft. in. (mm)	7'2.6" (2200)			
	Min. ground clearance		in. (mm)	15.4" (390)			
Hydraulic system	Pump capacity		GPM (ℓ/min)	19.0 (72.0) Variable × 2 / 17.6 (66.6) Gear × 1			
	Auxiliary hydraulic flow		GPM (ℓ/min)	26.4 (100) / 17.6 (66.6)			
	Max. breakout force	Bucket / Arm	lbs. (kgf)	14660 (6650) / 8554 (3880)			
Drive system	Travel speed	Low / High	mph (km/h)	1.7 (2.7) / 3.1 (4.9)			
	Max. traction force	Low speed	lbs. (kgf)	14615 (6630)			
	Tumbler distance		ft. in. (mm)	7'6.6" (2300)			
	Crawler length		ft. in. (mm)	9'6.2" (2900)			
	Shoe width	Rubber / Steel	in. (mm)	17.7" (450) / 17.7" (450)			
	Ground contact pressure	Rubber / Steel	psi (kgf/cm ²)	5.22 (0.367) / 5.25 (0.369)		5.44 (0.382) / 5.47 (0.384)	
Swing system	Unit swing speed		rpm	9.5			
	Boom swing angle	Left / Right	degree	70 / 60			
Blade	Dimensions	Width	ft. in. (mm)	7'2.6" (2200)			
		Height	ft. in. (mm)	1'7.7" (500)		1'8" (510)	
	Max. lift above ground		in. (mm)	19.7" (500)		22.8" (580)	
	Max. drop below ground		in. (mm)	19.7" (500)		25.2" (640)	
	Angle		degree	—		25	
Hydraulic oil (reservoir / system)			gal (ℓ)	19.8 (75) / 35.7 (135)			
Fuel reservoir			gal (ℓ)	30.4 (115)			
Operating weight (Including operator's weight @ 175 lbs.)		Rubber / Steel	lbs. (kgf)	18254 (8280) / 18364 (8330)		19026 (8630) / 19136 (8680)	

The company reserves the right to change the above specifications without notice. This brochure is for descriptive purposes only. Please contact your local Kubota dealer for warranty information. For your safety, Kubota strongly recommends the use of a Roll-over Protective Structure (ROPS) and seat belt for almost all applications.

DIMENSIONS



©2012 Kubota Corporation



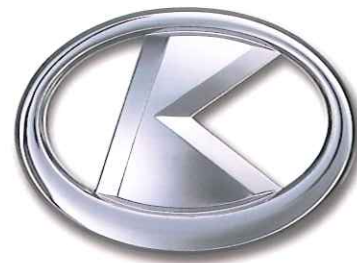
KUBOTA TRACTOR CORPORATION

Kubota Tractor Corporation, 3401 Del Amo Boulevard, Torrance CA 90503
 Western Division: 1175 S. Guild Ave., Lodi, CA 95240 Tel (209) 334-9910
 Central Division: 14855 FAA Boulevard, Fort Worth, TX 76155 Tel (817) 571-0900
 Northern Division: 6300 at One Kubota Way, Groveport, OH 43125 Tel (614) 835-1100
 Southeast Division: 1025 Northbrook Parkway, Suwanee, GA 30024 Tel (770) 995-8855

Visit our web site at: www.kubota.com



Kubota



KUBOTA COMPACT EXCAVATOR

KX

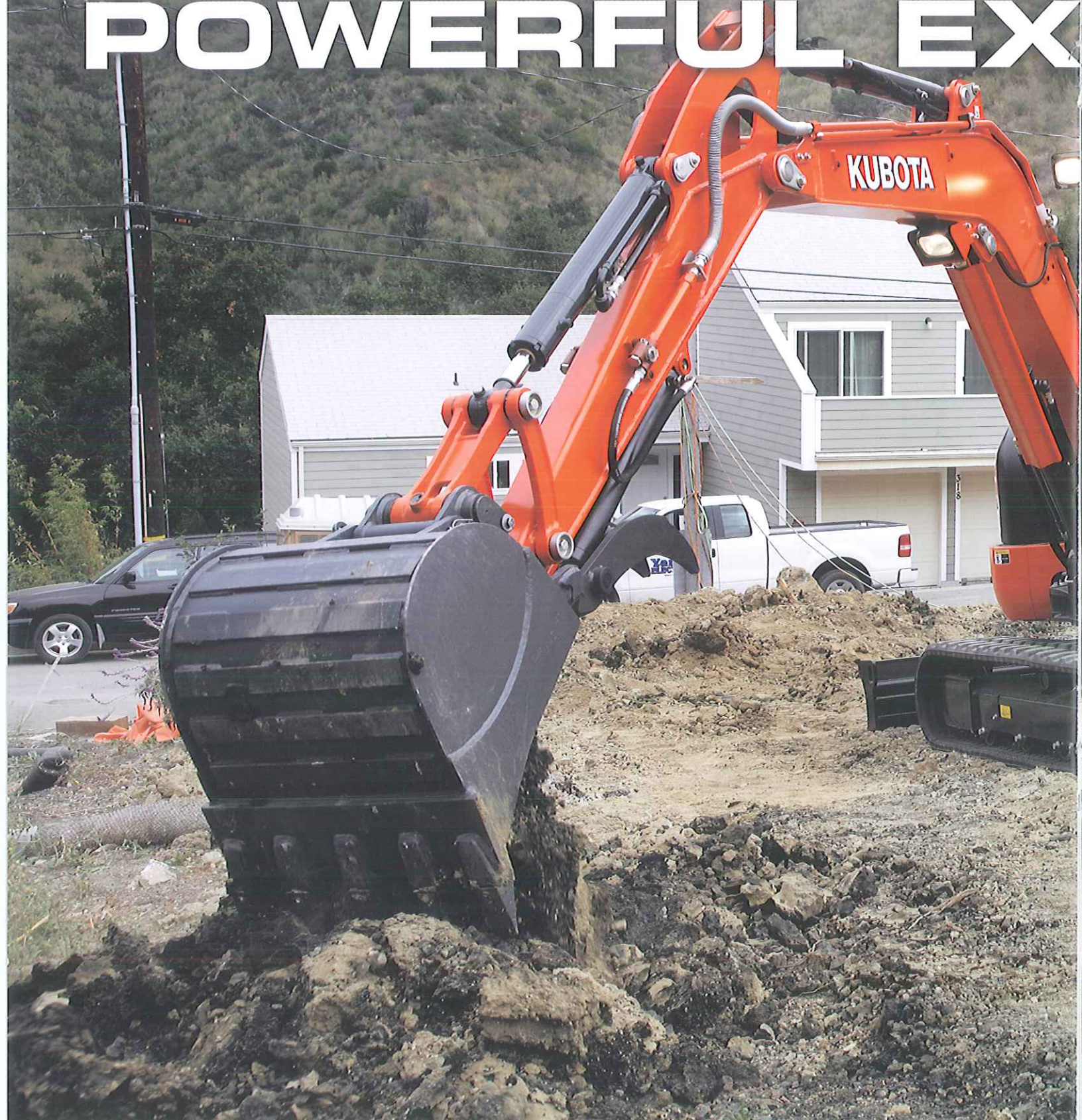
KX040-4

The superior compact excavator that combines superior strength and versatility with performance and user-friendly operation.



Superior 4-ton muscle and clean engine performance
make the KX040-4 the ideal choice for the urban jungle.

CLEAN AND POWERFUL EX



Kubota's CRS engine gives you the high torque you need to power through any tough task. The CRS electronically controls the timing and amount of fuel injection to lead to less engine noise and better fuel efficiency. In addition, the CRS helps reduce emissions and makes the KX040-4 EPA Tier IV-compliant.

CAVATOR

Common Rail System and Diesel Particulate Filter (DPF) Muffler

The Common Rail System (CRS) electronically controls the fuel injection timing and amount in stages rather than all at once for optimal combustion. The results are great efficiency, better fuel economy and less engine noise. Its combination with the Exhaust Gas Recirculation (EGR) and Diesel Particulate Filter (DPF) Muffler reduces harmful emissions to make the KX040-4 Tier IV-compliant.

Automatic regeneration system

Kubota's original automatic regeneration system automatically burns accumulated particulate matter (soot) in the DPF muffler to keep the muffler clean for longer operation. For safety reasons, automatic regeneration can be turned off with the inhibit switch when the excavator is operating in areas that are prone to fires.



Introducing ECO PLUS

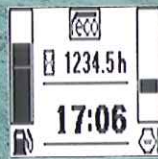
Kubota's original ECO PLUS prioritizes fuel economy, and supports the environment.

For tough digging applications, use Standard Mode and experience a 3% productivity improvement over the prior model and use less fuel, up to 12% less.

Activate Eco Mode with the flick of a switch for up to 9% fuel savings over Standard Mode.



Eco Mode Switch



Eco Mode Indicator

STANDARD MODE

- Improved Productivity
 - Lower Fuel Consumption
- Compared to Prior Model



Save
12%*

ECO MODE

- Focus on Lower Fuel Consumption



Save
9%*

*Compared to Standard Mode

DELUXE INTERIOR

The KX040-4 raises the standard in 4-ton excavator comfort with a spacious cab that rivals 5-ton excavators. The luxurious cab features a wider entrance, greater legroom and a deluxe seat. Operability is greatly enhanced with more easy-to-use features than ever before.

New Spacious Cab

Designed for greater comfort, the new large cab with a fully flat floor provides more legroom to minimise fatigue.

Easy-open Front Slide Window

Unlike many excavator windows, the front glass window of the KX040-4 opens with ease. Just flip the latches on the window sides and slide it up. A gas-assist mechanism makes this action almost effortless.



Wider Entrance

The KX040-4's larger cab provides a much wider door and more ample foot space, to make getting on and off the excavator a breeze.





Kubota

A. Deluxe Suspension Seat

Designed and engineered to fit better and to keep you working longer comfortably, Kubota's high-back suspension seat reduces strain and minimizes operator fatigue. It reclines to accommodate your individual posture, and offers weight compensation, firm and adjustable wrist support and retractable seat belts.

B. 2-speed Travel Switch

By placing the 2-speed travel switch on the dozer lever, dozing operations can be done faster and easier.



C. Cup Holder

With the convenience of a bigger cup holder, you can quench your thirst and work longer without leaving the cab. Or store your cell phone. The charging port is located conveniently close by.

D. Wrist Rest

A thoughtfully designed wrist rest enhances operation and reduces operator fatigue.

E. Air Conditioning

The overall air circulation in the cab has been improved, thanks to a stronger cooling/heating unit and the positioning of six vents around the operator to offer better all-round comfort.



Fully Flat Floor

For added comfort, the cabin floor is completely flat for greater legroom and a more spacious feel.



TPSS

The Two-Pattern Selection System positioned under the seat allows the operator to shift control styles conveniently while seated. A simple turn of a switch is all it takes to select between the ISO pattern and the SAE backhoe pattern.



SUPERIOR PERFORMANCE

KUBOTA

Proportional flow control of auxiliary circuit (AUX1/2) and maximum oil flow setting

The KX040-4 is available with a standard AUX1 and optional AUX2 auxiliary circuits. The convenient thumb-operated switch on the lever allows easy proportional flow control of the auxiliary circuit, while a forefinger-operated on/off switch enables simple operation of special applications that require a constant oil flow. The maximum oil flow setting is conveniently adjustable from the digital panel. Up to five flow rates corresponding to specific attachments can be programmed in the memory on the digital panel for easy retrieval for the next job.



AUX1 diverter valve

With the AUX1 diverter valve, the AUX oil supply can be changed without having to remove the thumb pipeline when the operator wants to use a hydraulic attachment.



Strong bucket breakout

Even when heavily loaded, the KX040-4 won't slow down, thanks to its powerful breakout force. With the pin-on or quick coupler bucket, the bucket breakout force is more than enough for even the toughest excavating jobs.

Auto-shift

The auto-shift system enables automatic travel shift from high to low depending on traction effort and terrain. This gives smoother simultaneous operations when dozing and turning.

Auto idling system

Save fuel with Kubota's Auto Idle. When the control levers are in neutral for more than 4 seconds, the engine RPM automatically idles. Move any control lever and the engine RPM immediately returns. This innovative feature reduces noise and exhaust emissions while reducing operating costs.

Thumb Bracket And Relief Valves

The hydraulic thumb makes short work of a variety of loading and material handling jobs. The factory installed mount brackets and hydraulics significantly reduce the time needed to mount accessories.

The KX040-4 has the power and versatility to take on almost any task even in the toughest conditions. Combined with improved digging and lifting power, and smoother travel performance, it can get the job done right!

Hydraulic Angle Blade

Save time and work more efficiently. With a simple movement of the dozer lever, the hydraulic angle blade can be angled to the right or left to push soil to the side as the machine moves forward, eliminating the need for repetitive repositioning at right angles when backfilling trenches.



Bolt-on cutting edge for angle blade

The bolt-on cutting edge of the dozer's angle blade allows the cutting edge to be replaced easily and inexpensively.



Tight spots

The angle blade lets you work efficiently in confined spaces, alongside walls, and near busy roads. No wider than the tracks, it's also easy to transport between jobs.

Easy operation

Angle blade operation has been enhanced for easier control. Up, down and float movements are made with a single lever, while left and right angle positioning is made by the rocker switch on top of the lever.



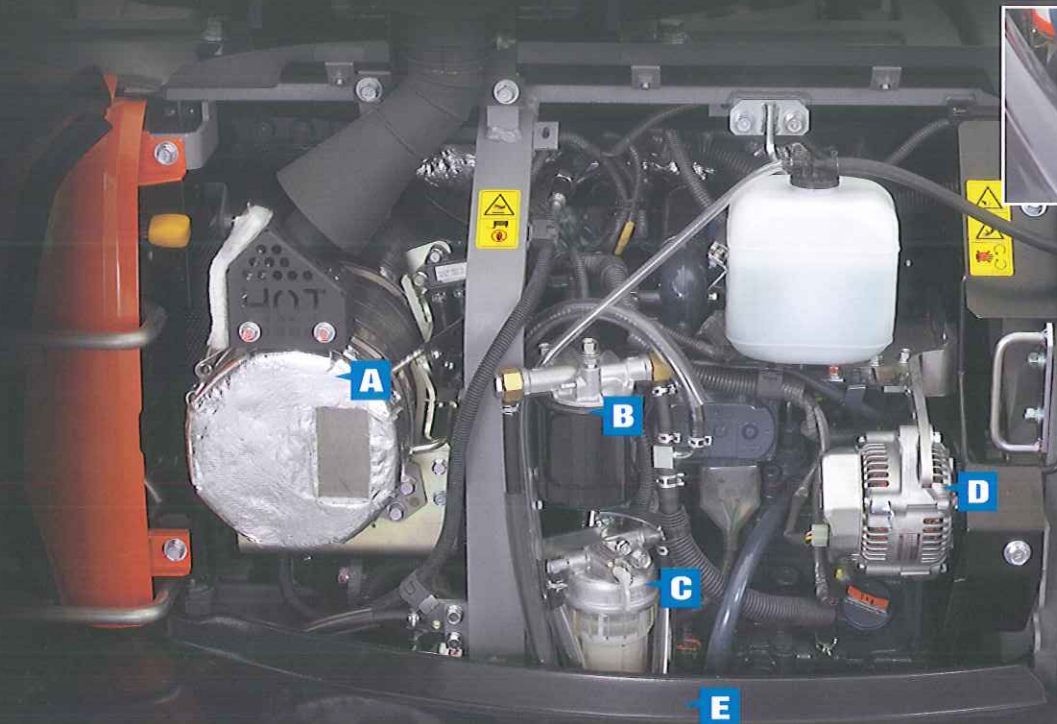
Float position

You don't need to adjust the dozer height to make a clean ground surface—after backfilling, just travel backward along the covered ditch with the dozer in the float position. The float function is also standard on the straight blade making ground-finishing work fast and easy!

One-sided Engine Maintenance

Kubota makes it easier for you to keep the KX040-4 in tip-top condition. Full-opening rear and right side hoods make access to the engine, control valves and various components easier for inspections and repairs.

- A.** DPF Muffler
- B.** Fuel Filter
- C.** Water Separator
- D.** Alternator
- E.** Starter Motor



Two-piece hose design

The two-piece hose connections for the dozer and boom cylinder hoses simplify hose replacement and reduce downtime.

Protected cylinder hoses

The bucket cylinder hoses are located inside the arm. And the boom cylinder hoses are routed under the boom bottom.

Centralized swivel bearing lubrication

Grease ports for the swivel bearing, gear teeth, and swing cylinder pin are conveniently grouped on the front of the house.

Front pin bushings

To maximize durability, we've introduced bushings on all of the pivot points on the front attachment and connecting points on the swing bracket.



MAINTENANCE & SAFETY

Although your Kubota excavator is state-of-the-art, its maintenance doesn't get much easier. Thanks to the full-opening rear and right side hoods, engine, control valves and various components are accessible for easy inspection and repair.

Accumulator

The accumulator makes replacing attachments safer and more efficient. Turning the key to the "on" position clears residual pressure in the auxiliary hydraulic hose. If the engine is accidentally shut off while the front attachment is raised, turning the key to the "on" position allows you to safely lower it.

Safety

Safety is designed into every detail of the KX040-4. An Engine Start Lockout System prevents the engine from starting when the safety levers are lowered. A Safety Lever Lockout System helps prevent unexpected excavator and attachment movement when entering or exiting the machine. An Auto House Parking Brake automatically locks the house in the position it was in when the engine was shut off, eliminating the need for a swing lock pin. It also makes the excavator more compact during transport and more secure when parked on an incline.



NEW DIGITAL PANEL

Standard Mode



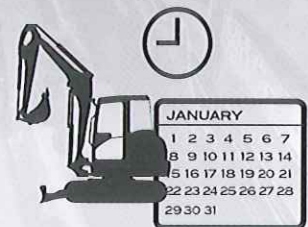
- A.** Hour Meter
- B.** Coolant Temperature
- C.** Clock
- D.** Fuel Level
- E.** Engine RPM



Following the excellence of Kubota's Intelligent Control System, the new digital panel puts convenience at the operator's fingertips. Featuring easier button operation, the user-friendly digital panel is positioned to the front right corner of the operator. This operator-facing wider display greatly improves visibility. With easier access, simpler settings, easy-to-read indicators and alerts, you'll always be aware of the excavator's functioning status.

Operation History Record

Operation history is automatically recorded on the KX040-4. You can trace back up to 90 days of the machine's usage dates by simply checking the built-in calendar.



Service Mode



Warning Mode



Operation History Record



Max. Oil Flow Setting (AUX1 and optional AUX2)

Automatic regeneration mode

The automatic regeneration system automatically burns particulate matter (soot) that accumulates in the diesel particulate filter (DPF) muffler. The soot is burned when the engine is operating at sufficient engine speed for regeneration. If the engine speed is lower than the required level for regeneration, the indicator requests an increase in the engine speed to keep the accumulation level low and the DPF clean. A service call or DPF filter replacement is required when the accumulated soot reaches a level that reduces the engine speed.



KX040-4 OPTIONS

STANDARD EQUIPMENT

Safety system

- Engine start safety system
- Travel motor with disc brake
- Swivel motor with disc brake
- All hydraulic control

Working equipment

- Auxiliary hydraulic circuit 1
- 2 working lights on cab and 1 light on the boom
- Dozer blade with float function
- Thumb bracket and relief valve

Operator's space

- ROPS/FOPS canopy
- Weight-adjustable full suspension seat
- Retractable seat belt
- Hydraulic pilot control levers with wrist rests
- Travel levers with foot pedals
- Two pattern selection system
- Digital panel
- 12V power source
- Cup holder
- Horn

Engine/Fuel system

- Double element air filter
- Auto idling system
- Water separator with drain cock

Undercarriage

- Dozer blade with float
- 350 mm rubber track
- 1 × upper track roller
- 4 double-flange track rollers on each side
- 2-speed travel switch on dozer lever
- 2-speed travel with auto-shift

Hydraulic system

- 1-pump load sensing system
- Pressure accumulator
- Hydraulic pressure checking ports
- Straight travel circuit
- Third line hydraulic return
- Auxiliary switch (AUX1)
- Adjustable maximum oil flow on auxiliary hydraulic circuits 1

Others

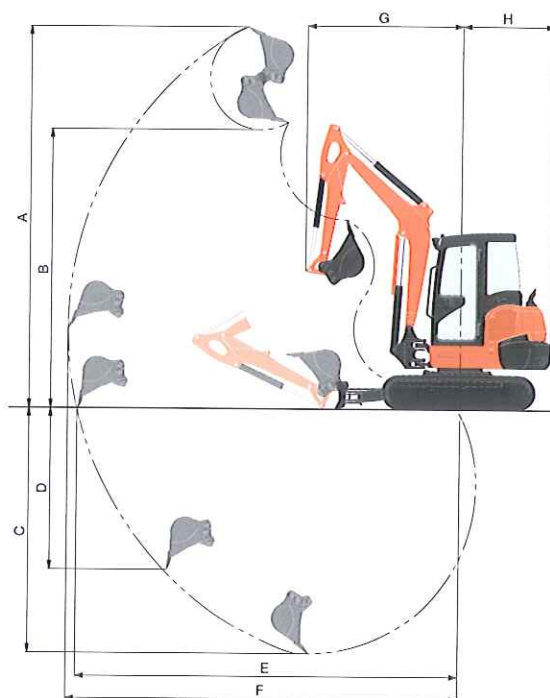
- Tool box
- Grease gun holder

OPTIONAL EQUIPMENT

- Cab with A/C
- Canopy lights
- Beacon lights
- 1'1.8"(350mm) steel track
- Additional auxiliary hydraulic circuit 2 (adjustable max. oil flow control)
- Angle blade with float function and BOE
- Travel alarm

WORKING RANGE

Model			KX040-4
A	Max. digging height	ft. in. (mm)	17'6" (5335)
B	Max. dumping height	ft. in. (mm)	12'9.5" (3900)
C	Max. digging depth	ft. in. (mm)	11'2.6" (3420)
D	Max. vertical digging depth	ft. in. (mm)	7'4.8" (2255)
E	Max. digging radius, at ground level	ft. in. (mm)	17'9" (5410)
F	Max. digging radius	ft. in. (mm)	18'2.1" (5540)
G	Min. turning radius	W/o swing ft. in. (mm)	7'0.8" (2155)
		W swing ft. in. (mm)	5'11.1" (1805)
H	Min. tail turning radius	ft. in. (mm)	4'3.2" (1300)

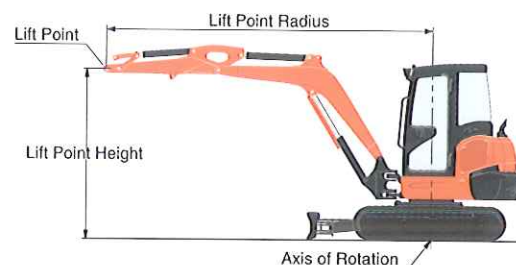


LIFTING CAPACITY

Cab rubber

LIFT POINT HEIGHT (ft)		LIFTING CAPACITY OVER-FRONT BLADE DOWN unit=1000 lbs			LIFTING CAPACITY OVER-SIDE unit=1000 lbs		
		LIFT POINT RADIUS (ft)			LIFT POINT RADIUS (ft)		
		8	12	14	8	12	14
GL	6	2.70	1.90	1.74	2.70	1.68	1.34
	4	3.52	2.11	1.85	2.91	1.64	1.31
	2	4.06	2.30	1.95	2.80	1.59	1.29
	0	4.23	2.41	1.99	2.75	1.57	1.27

Machine with cab and rubber crawler, without bucket

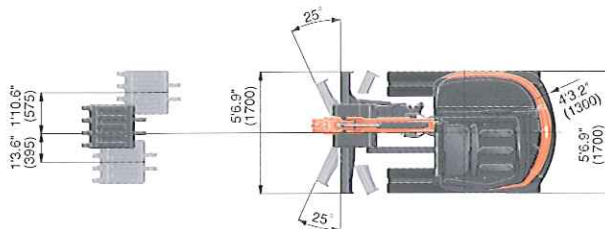


SPECIFICATIONS

Model				KX040-4	KX040-4 Angle Blade
Type of ROPS / FOPS				Canopy / Cab	
Type of tracks				Rubber / Steel	
Engine	Model			Kubota D1803-CR-TE4	
	Output (SAE J1995 gross)		HP (kW) / rpm	42.4 (31.6) / 2200	
	Output (SAE J1349 net)		HP (kW) / rpm	40.9 (30.5) / 2200	
	Displacement		cu. in. (cc)	111.4 (1826)	
Dimensions	Overall length		ft. in. (mm)	16'8.1" (5085)	
	Overall height		Rubber / Steel ft. in. (mm)	8'1.8" (2485) / 8'1.8" (2485)	
	Overall width		ft. in. (mm)	5'6.9" (1700)	
	Min. ground clearance		in. (mm)	12.99" (330)	
Hydraulic system	Pump capacity		GPM (ℓ/min)	24.4 (92.4)	
	Auxiliary hydraulic flow	AUX1 / AUX2	GPM (ℓ/min)	17.2 (65) / 9.8 (37)	
	Max. breakout force	Bucket / Arm	lbs. (kgf)	9535 (4325) / 4112 (1865)	
Drive system	Travel speed		Low / High mph (km/h)	1.8 (2.9) / 3.1 (5.0)	
	Max. traction force		Low speed lbs. (kgf)	9747 (4421)	
	Tumbler distance		ft. in. (mm)	5'7.3" (1710)	
	Crawler length		ft. in. (mm)	7'1.6" (2175)	
	Shoe width		ft. in. (mm)	1'1.8" (350)	
	Ground contact pressure	Canopy	psi (kPa)	4.33 (29.9) / 4.41 (30.4)	
		Cab	psi (kPa)	4.48 (30.9) / 4.56 (31.5)	
Swing system	Unit swing speed		rpm	9.2	
	Boom swing angle	Left / Right	degree	70 / 55	
Blade	Dimensions	Width	ft. in. (mm)	5'6.9" (1700)	
		Height	in. (mm)	15.75" (350)	15.16" (385)
	Max. lift above ground		in. (mm)	15.17" (400)	16.54" (420)
	Max. drop below ground		in. (mm)	15.94" (405)	20.08" (510)
	Angle	Left / Right	degree	-	25 / 25
Hydraulic oil (Reservoir / System)			gal (ℓ)	11.1 (42) / 19.6 (74)	
Fuel reservoir			gal (ℓ)	16.9 (64)	
Operating weight (Including operator's weight @ 175 lbs.)	Rubber	Canopy / Cab	lbs. (kgf)	9017 (4090) / 9326 (4230)	9370 (4250) / 9678 (4390)
	Steel	Canopy / Cab	lbs. (kgf)	9171 (4160) / 9480 (4300)	9524 (4320) / 9833 (4460)

The company reserves the right to change the above specifications without notice. This brochure is for descriptive purposes only. Please contact your local Kubota dealer for warranty information. For your safety, Kubota strongly recommends the use of a Rollover Protective Structure (ROPS) and seat belt for almost all applications.

DIMENSIONS



Unit: ft. in. (mm)



KUBOTA TRACTOR CORPORATION

Kubota Tractor Corporation, 3401 Del Amo Boulevard, Torrance CA 90503
 Western Division: 1175 S. Guild Ave., Lodi, CA 95240 Tel (209) 334-9910
 Central Division: 14855 FAA Boulevard, Fort Worth, TX 76155 Tel (817) 571-0900
 Northern Division: 6300 at One Kubota Way, Groveport, OH 43125 Tel (614) 835-1100
 Southeast Division: 1025 Northbrook Parkway, Suwanee, GA 30024 Tel (770) 995-8855

Visit our web site at: www.kubota.com



Kubota



KUBOTA COMPACT EXCAVATOR

KX

KX91-3 SUPER SERIES 2

The KX91-3S2 takes you to a new level of performance, so you can dig deeper, reach farther and work more efficiently.



AB

FLOAT ANGLE BLADE

T4

INTERIM TIER



With its wide assortment of innovative features, including Kubota's Float Angle Blade, the compact KX91-3 Super Series 2 is the ideal choice for the job.

The KX91-3S2 is loaded with features that make it the smart choice for your digging or dozing needs. Now, an exclusive hydraulic Float Angle Blade is available, so you'll complete your backfilling chores quickly and easily. Plus, with its hydraulic versatility, powerful and clean-running engine, and more, the KX91-3S2 will boost your efficiency and productivity. It offers all the tools you need to get the job done in comfort, and on time.

AB
FLOAT ANGLE BLADE

AB Hydraulic Angle Blade

FLOAT ANGLE BLADE

Save time and work more efficiently. With a simple movement of the dozer lever, the hydraulic angle blade can be angled to the right or left to push soil to the side as the machine moves forward, eliminating the need for repetitive repositioning at right angles when backfilling trenches.

Tight spots

The angle blade lets you work efficiently in confined spaces, alongside walls, and near busy roads. No wider than the tracks, it's also easy to transport between jobs.



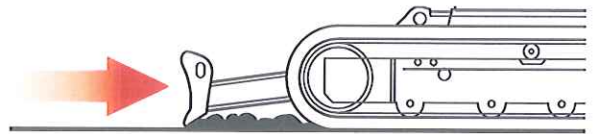
Easy operation

Up, down, left and right—the angle blade can be moved and positioned with just a single lever.

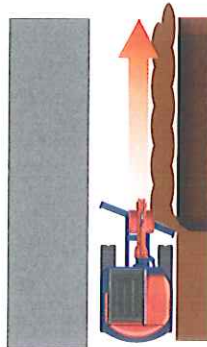


Float position

You don't need to adjust the dozer height to make a clean ground surface—after backfilling, just travel backward along the covered ditch with the dozer in the float position. Ground finishing work is now fast and easy!

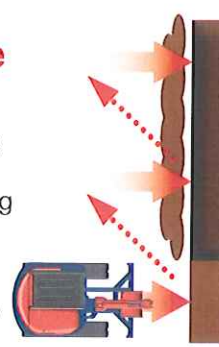


What makes our KX91-3S2 Angle Blade excavator so productive? Check it out.



With Angle Blade

Moving only in a forward direction one time, which is equivalent to a trencher backfilling its one side, the KX91-3S2 Angle Blade excavator backfills smoothly and efficiently.



Without Angle Blade

Without the angle blade feature, time-consuming, repetitive repositioning at right angles to the trench is required.

Comfort that keeps you working at peak efficiency.

Spacious operating area with deluxe suspension seat

More spacious than standard tail-swing excavators, the KX91-3S2's comfortable operating area helps reduce operator fatigue. The high-back deluxe suspension seat is equipped with wrist rests. Moreover, the height and spring firmness are adjustable, ensuring optimum comfort for every operator.

Convenient Two-pattern Selection System (TPSS)

Change between ISO and SAE operating patterns with a quick flip of the TPSS switch, without tools or leaving your seat.



User-friendly operation



1. Simple forefinger operation

Used for some special applications that require continuous oil flow, such as a brush cutter. The on/off button controlled by the forefinger reduces operator fatigue.

2. Short stroke operating levers

The operating levers require less effort and shorter movements,

ensuring improved control, responsiveness and comfort, and reduced operator fatigue. Only a flick of the wrist is needed for smooth excavator operation.

3. Proportional flow auxiliary switch

A convenient bi-directional switch enables easy operation of hydraulic thumbs and other hydraulic attachments such as augers and breakers.

4. 2-speed travel switch

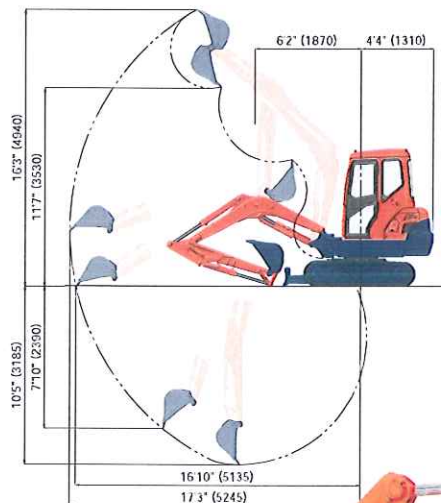
The 2-speed travel switch is mounted on the dozer lever for easy operation and control, and advanced, user-friendly travel speed changes.

5. Wrist rests

Adjust the custom wrist rests to your favorite position, or just move them aside. Either way, they help reduce arm movement and operator fatigue for increased job efficiency.



The power and versatility to take on a variety of tough jobs.



Wide working range

The KX91-3S2's powerful and responsive front working group can handle all your digging, lifting, and loading jobs. With its increased bucket capacity and improved reach and digging depth, the KX91-3S2 meets or exceeds most job requirements on the construction site.



Strong bucket breakout force

Even when heavily loaded, the KX91-3S2 won't slow down, thanks to its class-leading breakout force. With the dedicated or quick coupler bucket, the bucket breakout force is 8,059 lbs. That's more than enough for even the tough excavating jobs.



Clean-running Kubota Engine

Powerful and dependable, the KX91-3S2's diesel engine delivers superior horsepower and performance. It offers low noise and vibration levels, exceptional fuel efficiency, and complies with the EPA's 2008 interim Tier IV emissions regulations.



Complies with Interim Tier IV!

Auto idling system

Save fuel with Kubota's Auto Idle. Reduce engine RPM instinctively when high engine speed isn't needed. When the control levers are in neutral for more than 4 seconds, the engine RPM automatically idles. Move any control lever and the engine RPM immediately returns. This innovative feature reduces noise and exhaust emissions while reducing operating costs.



Adjustable maximum oil flow control for auxiliary port

This unique function lets you control the oil flow according to your needs or the attachment in use. It eliminates the hassle of using tools to change settings manually, so you don't have to leave the cabin. When using a tilt bucket, you can slow the flow to get just the right control to gently shape a swale.

Alternatively, for a brush cutter, direct the oil flow to one side of the excavator arm. The system will even store your settings for the next time you need it, saving time and quickly regulating the flow requirements. Adjustable oil flow enhances performance and saves fuel.



Digital panel

A digital panel and the Kubota Intelligent Control System (KICS) help reduce excavator downtime and repair fees by providing accurate and timely diagnostic readings and routine maintenance alerts. The panel not only lets you know when fuel is running low, but warns you during refueling when the tank is nearly full.



Routine maintenance alert display



Low fuel display

Value Thumb bracket

The factory-installed thumb bracket and relief valve significantly reduce the time needed to mount the optional hydraulic thumb, which makes short work of a variety of loading and material handling jobs.



Extraordinary stability and lifting capacity

Innovative counter balancing technology provides superior excavator stability. Long tumbler distance, a lower center of gravity and Double Flanged Lower Track Rollers combine to deliver safe and effective performance when working to the side, with hydraulic attachments, or lifting heavy objects.

Rear corner protectors

Two heavy-duty protectors—one on each rear corner—protect the engine hood and side covers from damage when working in tight spaces.



Simple maintenance keeps the KX91-3S2 working longer.

ROPS/OPG (TOP Guard, Level I) canopy and cab

The ROPS/OPG (TOP Guard, Level I) canopy and cab provide complete protection from accidental rollovers and falling objects. Both the ROPS and the OPG (TOP Guard, Level I) meet the applicable, ISO, SAE, and OSHA standards to ensure an extra level of safety and security on the job.

Two-piece hose design

The two-piece hose connections for the dozer and boom cylinder hoses simplify hose replacement and reduce downtime.

Protected cylinder hoses

The bucket cylinder hoses are located inside the arm. And the boom cylinder hoses are routed under the boom bottom.

Centralized swivel bearing lubrication

Grease ports for the swivel bearing, gear teeth, and swing cylinder pin are conveniently grouped on the front of the house.

Steel-plated panels

The KX91-3S2 features long-lasting rear and side panels that open easily for quick inspection and routine maintenance. These panels are made of steel for enhanced strength and durability.

Front bush pins

To maximize durability, we've introduced bushings on all of the pivot points on the front attachment and connecting points on the swing bracket.

Third-line hydraulic return

When working with one-way hydraulic attachments, such as a breaker or brush cutter, the standard third-line hydraulic return system allows oil to flow directly back to the tank without running through the control valves. This contributes to less oil contamination, reduced back pressure, and greater oil flow efficiency.



Easy maintenance

The KX91-3S2 is a breeze to maintain. The side and rear covers open wide and the main components are centrally located, giving you quick and easy access to all vital areas, including the engine, fuel tank, water separator, radiator, coolant reservoir, air filter, control valve and hydraulic tank.



Safety

Safety is designed into every detail of the KX91-3S2. An Engine Start Lockout System prevents the engine from starting when the safety levers are lowered. A Safety Lever Lockout System helps prevent unexpected excavator and attachment movement when entering or exiting the machine. An Auto House Parking Brake automatically locks the house in the position it was in when the engine was shut off, eliminating the need for a swing lock pin. It also makes the excavator more compact during transport and more secure when parked on an incline.

Travel negative brake

The travel negative brake locks the tracks to prevent unwanted movement. This keeps the excavator secure while transporting it on the back of trucks or parking it on slopes.

Swivel negative brake

The swivel negative brake automatically locks the swivel function in its current position. This prevents unexpected machine movement. It's particularly useful during work on slopes or when towing the excavator between worksites.

Accumulator

The accumulator makes replacing attachments safer and more efficient. Turning the key to the "on" position clears residual pressure in the auxiliary hydraulic hose. If the engine is accidentally shut off while the front attachment is raised, turning the key to the "on" position allows you to safely lower it.



KX91-3S2 OPTIONS

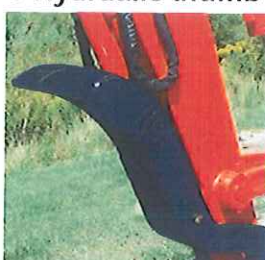
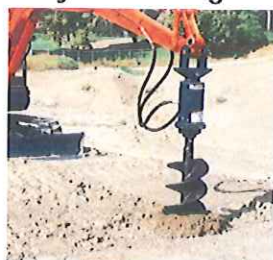
● Buckets ● Spark arrest muffler ● Travel alarm

● Hydraulic auger ● Canopy lights

● Hydraulic thumb

● Quick coupler

● Hydraulic hammer



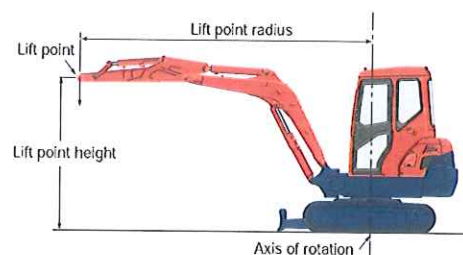
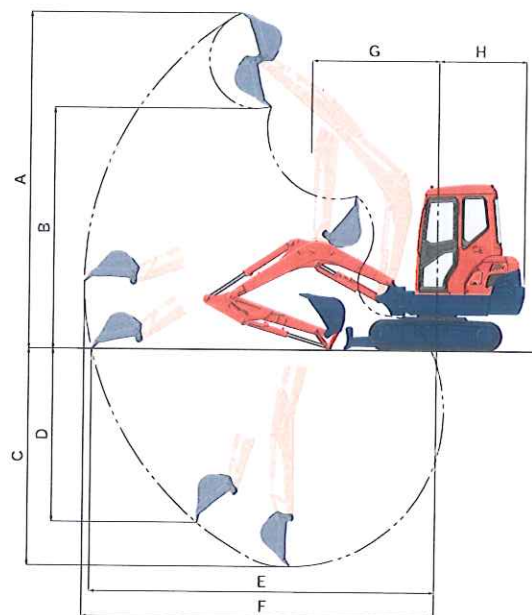
WORKING RANGE

Model			KX91-3S2	
A	Max. digging height	ft. in. (mm)	16'3" (4940)	
B	Max. dumping height	ft. in. (mm)	11'7" (3530)	
C	Max. digging depth	ft. in. (mm)	10'5" (3185)	
D	Max. vertical digging depth	ft. in. (mm)	7'10" (2390)	
E	Max. digging radius, at ground level	ft. in. (mm)	16'10" (5135)	
F	Max. digging radius	ft. in. (mm)	17'3" (5245)	
G	Min. turning radius	W/o swing	ft. in. (mm)	6'2" (1870)
		With swing	ft. in. (mm)	4'9" (1440)
H	Min. tail turning radius	ft. in. (mm)	4'4" (1310)	

LIFTING CAPACITY

LIFT POINT HEIGHT (ft)		LIFTING CAPACITY OVER THE FRONT, BLADE DOWN unit=1000lbs			LIFTING CAPACITY OVER THE SIDE unit=1000lbs		
		LIFT POINT RADIUS (ft)			LIFT POINT RADIUS (ft)		
		8	12	MAX	8	12	MAX
GL	6	1.78	1.42	1.36	1.78	1.30	1.03
	4	2.42	1.58	1.43	2.29	1.27	1.01
	2	2.95	1.74	1.50	2.18	1.23	0.99
	0	3.22	1.84	1.53	2.11	1.20	0.97

Machine with ROPS canopy and rubber crawler, without bucket

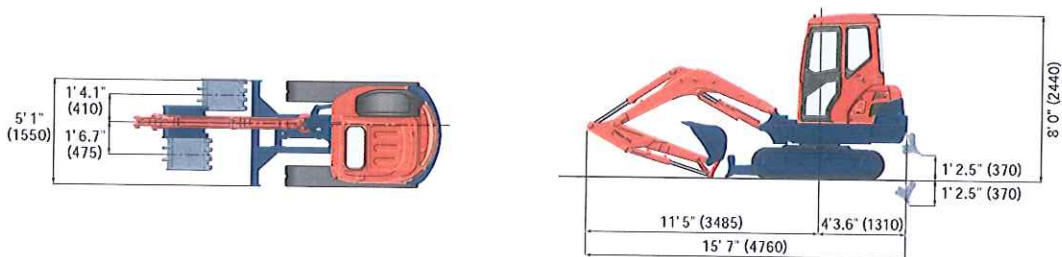


SPECIFICATIONS

Model				KX91-3S2		KX91-3S2 angle blade		
Type of ROPS / OPG (TOP Guard, Level I)				Canopy / Cab				
Type of tracks				Steel / Rubber				
Engine	Model			Kubota D1703-M-E3				
	Output (SAEJ 1995 gross)		HP (kW)/rpm	28.2 (21.0) / 2250				
	Output (SAEJ 1349 net)		HP (kW)/rpm	26.9 (20.1) / 2250				
	Displacement		cu. in. (cc)	100.5 (1647)				
Dimensions	Overall length		ft. in. (mm)	15'7" (4760)				
	Overall height	Canopy / Cab	ft. in. (mm)	8'0" (2440) / 8'0" (2440)				
	Overall width		ft. in. (mm)	5'1" (1550)				
	Min. ground clearance		in. (mm)	11.6" (295)				
Hydraulic system	Pump capacity		GPM (ℓ/min)	10.9 (41.4) variable × 2 / 5.5 (20.9) Gear × 1				
	Auxiliary hydraulic flow		GPM (ℓ/min)	10.9 (41.4)				
	Max. breakout force	Bucket / Arm	lbs. (kgf)	8059 (3655) / 3592 (1629)				
Drive system	Travel speed	Low / High	mph (km/h)	1.9 (3.1) / 2.9 (4.8)				
	Max. traction force	Low speed	lbs. (kgf)	5600 (2540)				
	Tumbler distance		ft. in. (mm)	5'1.4" (1560)				
	Crawler length		ft. in. (mm)	6'6.7" (2000)				
	Shoe width		ft. in. (mm)	0'11.8" (300)				
	Ground contact pressure	Canopy	Rubber / Steel	psi (kgf/cm ²)	4.457 (0.313) / 4.575 (0.322)		4.727 (0.332) / 4.844 (0.341)	
		Cab	Rubber / Steel	psi (kgf/cm ²)	4.596 (0.323) / 4.713 (0.331)		4.865 (0.342) / 4.983 (0.350)	
Swing system	Unit swing speed		rpm	9.4				
	Boom swing angle	Left / Right	degree	80 / 50				
Blade	Dimensions	Width	ft. in. (mm)	5'1" (1550)				
		Height	ft. in. (mm)	1'1.2" (335)		1'3.2" (385)		
	Max. lift above ground		ft. in. (mm)	1'2.6" (370)		1'4.1" (410)		
	Max. drop below ground		ft. in. (mm)	1'2.6" (370)		1'6.5" (470)		
	Angle		degree	—		25		
Hydraulic oil (reservoir / system)			gal (ℓ)	9.5 (36) / 14.5 (55)				
Fuel reservoir			gal (ℓ)	13.2 (50)				
Operating weight (Including operator's weight 175 lbs.)		Canopy	Rubber / Steel	lbs. (kgf)	7110 (3225) / 7297 (3310)		7540 (3420) / 7727 (3505)	
		Cab	Rubber / Steel	lbs. (kgf)	7330 (3325) / 7518 (3410)		7760 (3520) / 7948 (3605)	

The company reserves the right to change the above specifications without notice. This brochure is for descriptive purposes only. Please contact your local Kubota dealer for warranty information. For your safety, Kubota strongly recommends the use of a Rollover Protective Structure (ROPS) and seat belt for almost all applications.

DIMENSIONS



Unit: ft. in. (mm)

©2008 Kubota Corporation



KUBOTA TRACTOR CORPORATION

Kubota Tractor Corporation, 3401 Del Amo Boulevard, Torrance CA 90503
 Western Division: 1175 S. Guild Ave., Lodi, CA 95240 Tel (209) 334-9910
 Central Division: 14855 FAA Boulevard, Fort Worth, TX 76155 Tel (817) 571-0900
 Northern Division: 6300 at One Kubota Way, Groveport, OH 43125 Tel (614) 835-1100
 Southeast Division: 1025 Northbrook Parkway, Suwanee, GA 30024 Tel (770) 995-8855

Visit our web site at: www.kubota.com



