

## INDEX OF DRAWINGS

- 1 - 3 COVER SHEET
- 2 - 3 ROOF PLAN
- 3 - 3 DETAILS

# MISSOURI DEPARTMENT OF TRANSPORTATION

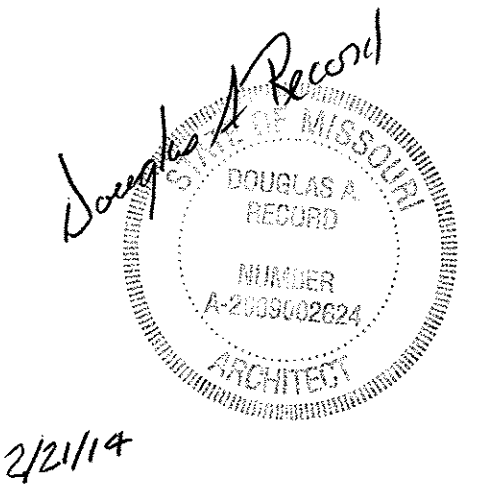
LAB REROOF  
PHASE TWO  
1617 MISSOURI BOULEVARD

### CODE REQUIREMENTS

BUILDING CODE - IBC 2003

COLE COUNTY

CENTRAL OFFICE - JEFFERSON CITY, MISSOURI

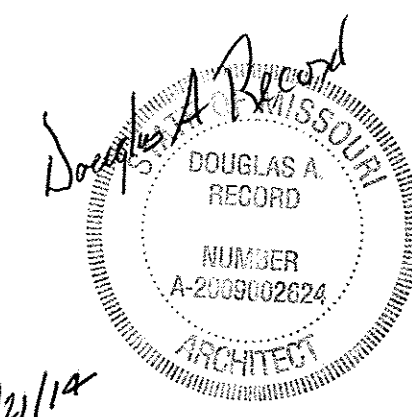


DESIGN BY: LARRY CARVER  
CHECKED BY: DOUG RECORD  
DATE: 2-21-14

CENTRAL OFFICE  
LAB REROOF - PHASE TWO  
JEFFERSON CITY, MISSOURI

MISSOURI DEPARTMENT  
OF TRANSPORTATION  
DIVISION OF GENERAL SERVICES  
FACILITIES MANAGEMENT

COVER SHEET

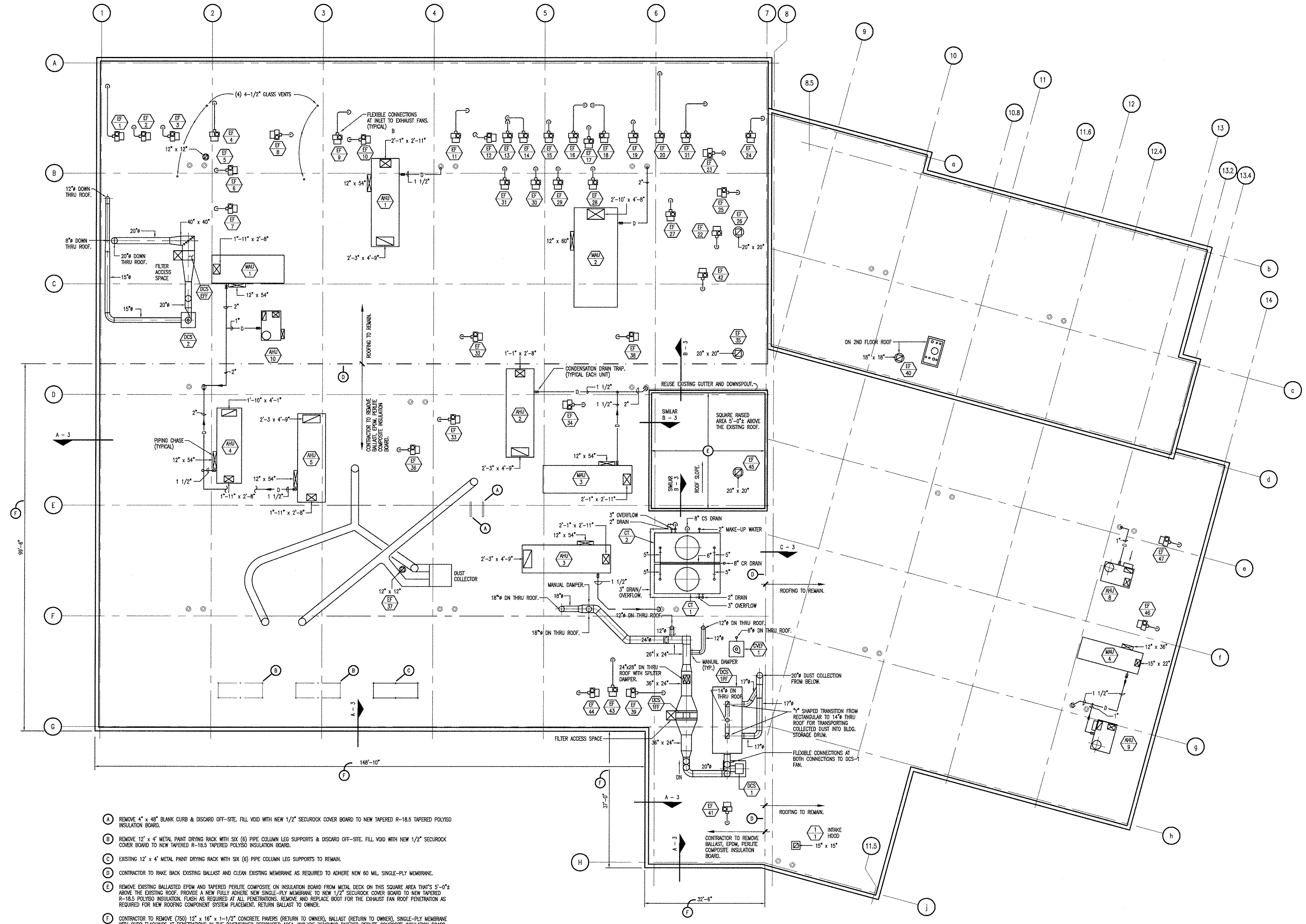


DESIGN BY: LARRY CARVER  
CHECKED BY: DOUG RECORD  
DATE: 2-21-14

CENTRAL OFFICE  
LAB ROOF - PHASE TWO  
JEFFERSON CITY, MISSOURI

MISSOURI DEPARTMENT  
OF TRANSPORTATION  
DIVISION OF GENERAL SERVICES  
FACILITIES MANAGEMENT

ROOF PLAN



- (A) REMOVE 4' x 48' BLANK CURB & DISCARD OFF-SITE. FILL VOID WITH NEW 1/2" SECUROCK COVER BOARD TO NEW TAPERED R-18.5 TAPERED POLYSTYRENE INSULATION BOARD.
- (B) REMOVE 12' x 4' METAL PAINT DRYING RACK WITH SIX (6) PIPE COLUMN LEG SUPPORTS & DISCARD OFF-SITE. FILL VOID WITH NEW 1/2" SECUROCK COVER BOARD TO NEW TAPERED R-18.5 TAPERED POLYSTYRENE INSULATION BOARD.
- (C) EXISTING 12' x 4' METAL PAINT DRYING RACK WITH SIX (6) PIPE COLUMN LEG SUPPORTS TO REMAIN.
- (D) CONTRACTOR TO RAKE BACK EXISTING BALLAST AND CLEAN EXISTING MEMBRANE AS REQUIRED TO ADHERE NEW 60 MIL SINGLE-PLY MEMBRANE.
- (E) REMOVE EXISTING BALLASTED EPDM AND TAPERED PERFLUOROPOLYETHER COMPOSITE ON INSULATION BOARD FROM METAL DECK ON THIS SQUARE AREA THAT'S 5'-0" ABOVE THE EXISTING ROOF. PROVIDE A NEW FULLY ADHESIVE NEW SINGLE-PLY MEMBRANE TO NEW 1/2" SECUROCK COVER BOARD TO NEW TAPERED R-18.5 POLYSTYRENE INSULATION. FLASH AS REQUIRED AT ALL PENETRATIONS. REMOVE AND REPLACE BOOT FOR THE EXHAUST FAN ROOF PENETRATION AS REQUIRED FOR NEW ROOFING COMPONENT SYSTEM PLACEMENT. RETURN BALLAST TO OWNER.
- (F) CONTRACTOR TO REMOVE (750) 12' x 16' x 1-1/2" CONCRETE FRAMES (RETURN TO OWNER), BALLAST (RETURN TO OWNER), SINGLE-PLY MEMBRANE WITH CURB FLASHINGS AT PENETRATIONS IN THE UNDERSOON DESIGNATED AREA, INCLUDE REMAINING TAPERED PERFLUOROPOLYETHER COMPOSITE INSULATION BOARD ON EXISTING CONCRETE DECK, FULLY ADHESIVE NEW SINGLE-PLY MEMBRANE TO NEW 1/2" SECUROCK COVER BOARD TO NEW TAPERED R-18.5 POLYSTYRENE INSULATION BOARD THAT IS FULLY ADHERED TO EXISTING CONCRETE DECK. FLASH AS REQUIRED AT ALL PENETRATIONS. REMOVE & REPLACE PENETRATION BOOTS FOR ALL SMALL PIPE, GLASS VENT, RACK SUPPORT, ETC. AS REQUIRED FOR NEW ROOFING COMPONENT SYSTEM PLACEMENT.

PHASE TWO  
LAB ROOF PLAN  
SCALE: 1/16" = 1'-0"  
NORTH

DESIGN BY: LARRY CARVER  
 CHECKED BY: DOUG RECORD  
 DATE: 2-21-14

CENTRAL OFFICE

LAB REROOF - PHASE TWO

JEFFERSON CITY, MISSOURI

MISSOURI DEPARTMENT

OF TRANSPORTATION

DIVISION OF GENERAL SERVICES

FACILITIES MANAGEMENT

DETAILS

