

INDEX OF DRAWINGS

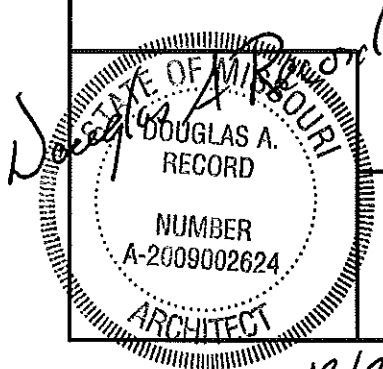
- 1 - 3 COVER SHEET  
2 - 3 PARTIAL SITE PLAN  
3 - 3 DETAILS

MISSOURI DEPARTMENT  
OF TRANSPORTATION

CENTRAL OFFICE  
FRENCH DRAIN INSTALLATION  
Central District  
105 West Capitol  
Cole County

CODE REQUIREMENTS

PLUMBING CODE - CURRENT IBC



COVER SHEET

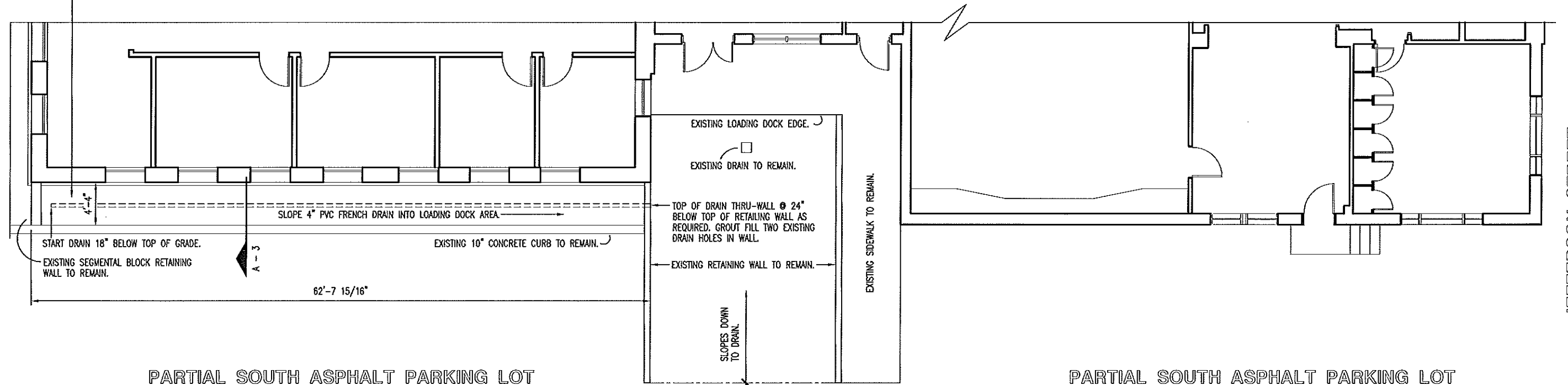
MISSOURI DEPARTMENT  
OF TRANSPORTATION  
DIVISION OF GENERAL SERVICES  
FACILITIES MANAGEMENT

CENTRAL OFFICE FRENCH DRAIN INSTALLATION  
105 West Capitol  
Central District - Cole County

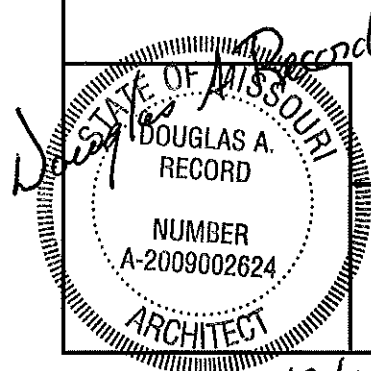
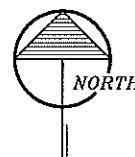
DESIGN BY: LARRY CARYER  
DRAWN BY: LARRY CARYER  
DATE: 11-22-13  
Sheet  
1 of 3

EXISTING ROCK/EARTH TO BE REMOVED  
4'-4" AREA AND DISCARDED OFF-SITE.  
INSTALL 4" PVC PERFORATED FRENCH  
DRAIN AS REQUIRED. BACKFILL WITH  
1-1/2" CREEK GRAVEL AT THE SAME  
ELEVATION. CREEK GRAVEL PROVIDED BY  
MODOT THAT'S LOCATED AT 830 MODOT  
DRIVE, JEFFERSON CITY, MISSOURI.

PARTIALLY SHOWN FIRST FLOOR OF 105 WEST CAPITOL MODOT BUILDING.



PARTIAL  
SITE PLAN  
SCALE: 3/32" = 1'-0"



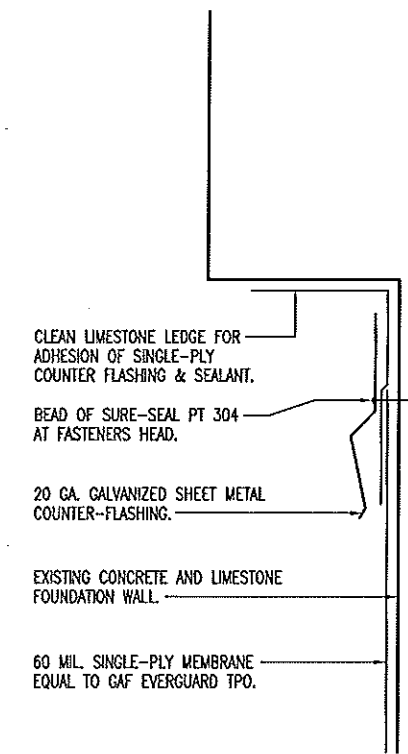
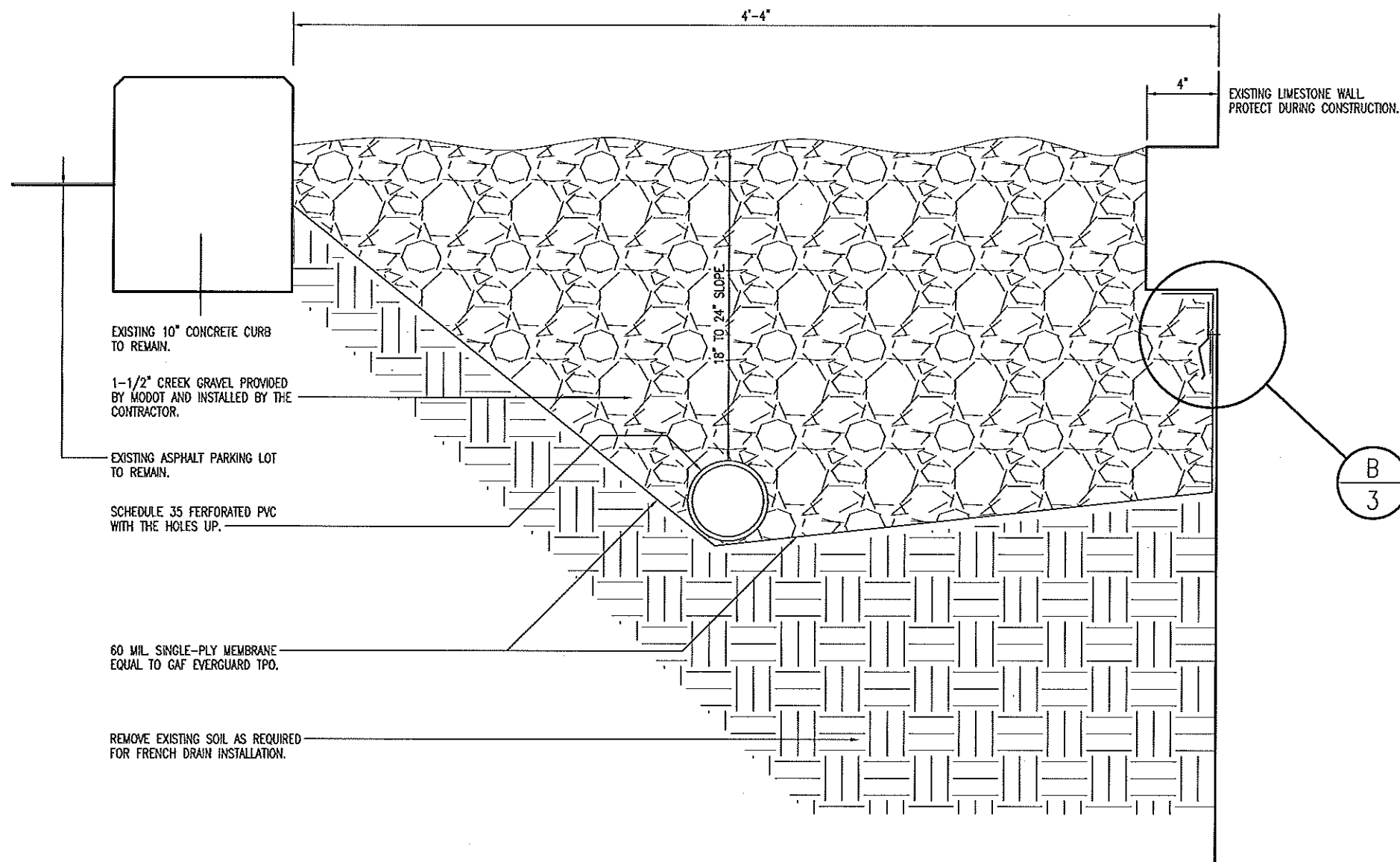
PARTIAL SITE PLAN

MISSOURI DEPARTMENT  
OF TRANSPORTATION  
DIVISION OF GENERAL SERVICES  
FACILITIES MANAGEMENT

CENTRAL OFFICE FRENCH DRAIN INSTALLATION  
105 West Capitol  
Central District - Cole County

DESIGN BY: LARRY CARVER  
DRAWN BY: LARRY CARVER  
DATE: 11-22-13  
Sheet  
2 of 3

12/2/13



**B**  
**3** EPDM & REGLET  
SCALE: 3" = 1'-0"

**A**  
**3** DETAIL  
SCALE: 1-1/2" = 1'-0"

*Joseph A. Record*  
STATE OF MISSOURI  
DOUGLAS A.  
RECORD  
NUMBER  
A-2009002624  
ARCHITECT  
12/2/13

DETAIL

MISSOURI DEPARTMENT  
OF TRANSPORTATION  
DIVISION OF GENERAL SERVICES  
FACILITIES MANAGEMENT

CENTRAL OFFICE FRENCH DRAIN INSTALLATION  
105 West Capitol  
Central District - Cole County

DESIGN BY: LARRY CARVER  
DRAWN BY: LARRY CARVER  
DATE: 11-22-13  
Sheet  
3 OF 3