

BID FORM

**MISSOURI DEPARTMENT OF TRANSPORTATION  
GENERAL SERVICES  
P.O. BOX 270  
JEFFERSON CITY, MO 65102**

|             |                  |
|-------------|------------------|
| REQUEST NO. | 2-131113RW       |
| DATE        | October 23, 2013 |
|             |                  |

SEALED BIDS, SUBJECT TO THE ATTACHED CONDITIONS WILL BE RECEIVED AT THIS OFFICE UNTIL

**2:00 p.m., Local Time, November 13, 2013**

AND THEN PUBLICLY OPENED AND READ FOR FURNISHING THE FOLLOWING SUPPLIES OR SERVICES.

**BIDS TO BE BASED F.O.B. MISSOURI DEPARTMENT OF TRANSPORTATION**

Submit net bid as cash discount stipulations will not be considered  
Various MoDOT Locations

THE BIDDER MUST SIGN AND RETURN BEFORE DATE AND TIME SET FOR OPENING.

**BUYER:** Robin Warren  
**BUYER EMAIL:**  
Robin.Warren@modot.mo.gov

**BUYER TELEPHONE:** 573-526-7929

**SUPPLIES OR SERVICES**

**Sign Fabrication**

To establish a contract to furnish **Sign Fabrication** with an effective date of Notice to Proceed and ending December 31, 2014 in accordance with the following pages.

(SEE ATTACHED FOR CONDITIONS AND INSTRUCTIONS)

*In compliance with the above Request For Bid, and subject to all conditions thereof, the undersigned bidder agrees to furnish and deliver any or all the items on which prices were bid within the timeframe specified herein, after receipt of formal purchase order.*

**Date:** \_\_\_\_\_

**Firm Name:** \_\_\_\_\_

**Telephone No.:** \_\_\_\_\_

**Address:** \_\_\_\_\_

**Fax No.:** \_\_\_\_\_

**By (Signature):** \_\_\_\_\_

**Email Address:** \_\_\_\_\_

**Type/Print Name** \_\_\_\_\_

**Title:** \_\_\_\_\_

## **1. INTRODUCTION AND GENERAL INFORMATION**

### **1.1 Introduction:**

- 1.1.1 This Request for Bid seeks bids from qualified organizations to provide flat sheet signs, structural signs, and unique signs with an effective contract period of Notice to Proceed through December 31, 2014, to the Missouri Highways and Transportation Commission (MHTC) and Missouri Department of Transportation (MoDOT), hereinafter referred to as MoDOT. All questions regarding the RFB shall be submitted to the RFB Coordinator, Robin Warren. Bids must be returned no later than 2:00 p.m., Local Time, November 13, 2013.

#### **RFB Coordinator:**

**Robin Warren**  
**Sr. General Services Specialist**

**Phone: 573-526-7929**

## **1.2 General Information:**

- 1.2.1 This document constitutes an invitation for competitive, sealed bids for the procurement of flat sheet signs, structural signs, and unique signs as set forth herein.
- 1.2.2 Organization - This document, referred to as a Request for Bid (RFB), is divided into the following parts:
  - a. Introduction and General Information
  - b. Scope of Work
  - c. Bid Submission
  - d. Pricing Page
  - e. Signature Page(s)
  - f. Terms and Conditions
  - g. Appendix Pages

## **1.3 Background Information:**

- 1.3.1 MoDOT closed its sign production center in 2011 as part of a department wide right sizing effort and utilized contracted services to replace this operation. There has only been one full year of contracted services, first year of the contract was a transition from our facility's production to full contract services. Purchase history on this first full year of sign outsourcing is listed in Appendix 1 and 2. These numbers represent MoDOT purchasing practices per district under our new reorganization format, but future purchase will still vary based on field demand. These numbers represent any sign fabricated on flat sheet aluminum or extruded panel aluminum ranging in size from a 4' x 6" up to large structural guide signs 45' x 12' or larger.
- 1.3.2 Appendix 3 depicts MoDOT's new 7 district boundary format with the three regional offices. It is anticipated the Willow Springs regional facility will be the only regional office to order all classes of signs with the Joplin regional facility expecting to receive shipments of structural signs. The Macon facility is not expected to require any shipments.

## **1.4 Definitions:**

- 1.4.1 Flat Sheet Signs – A highway sign fabricated from flat sheet aluminum.
- 1.4.2 Flip Signs – MoDOT utilizes flat sheet aluminum 48" x 48" and 60" x 30" folding signs to display dual messages where conditions may change consistently, typically for roadway flooding. See Appendix 4, 5, 6, 7.
- 1.4.3 Guard Rail End Object Marker – A type III style object marker made as a decal that is affixed to the traffic facing end of a guard rail energy absorption system. See Appendix 15.
- 1.4.4 Structural Sign – Signs fabricated using extruded aluminum panels. Signs are typically designed in 1 foot increments both height and width, but some designs may require 6" increments in the height dimension.
- 1.4.5 Unique Signs – A signing category containing signing related items that are not typical highway signs. See Appendix 12, 13, 14 and 15.

- 1.4.6 ASTM Type IV Sheeting – MoDOT’s base retroreflective materials, see MoDOT Standard Specifications for Highway Construction, Division 1000, Section 1042.2.7, Highway Sign Material – Retroreflective Sheeting for further details on specifications (available on MoDOT’s web site).
- 1.4.7 ASTM Type IX or XI Sheeting – MoDOT’s retroreflective sheeting for direct applied legend, florescent sheeting and delineators, see MoDOT Standard Specifications for Highway Construction 2011, Division 1000, Section 1042.2.7, Highway Sign Material – Retroreflective Sheeting for further details on specifications (available on MoDOT’s web site)..
- 1.4.8 Standard Sign – A sign whose design is fixed and does not change based on application, typically regulatory, warning or informational signs specified in the MUTCD or that are MoDOT specific designs.
- 1.4.9 Variable Signs – A sign whose design varies from application to application. These signs can include such signs as exit guide signs, distance and destination signs or city limit sign, but may also include unique signs designed specifically by MoDOT Traffic and Highway Safety Division to address a specific location.
- 1.4.10 Life of the Sign – The life of the signs is expected to be at the minimum the warranty period of the sign sheeting (10 year minimum) and up to 15 years.
- 1.4.11 Digital Printing – Digital Printing is defined as a computer driven printing process of creating a sign face or logo using a printer to transfer inks (dry or liquid) onto a reflective sign sheeting to create an image instead of the standard silk screen printing or electrocute film applications.

## 2. SCOPE OF WORK

### 2.1 General Requirements:

- 2.1.1 The contractor(s) shall provide flat sheet signs, structural signs, and unique signs on an as needed, if needed basis for MoDOT, in accordance with the provisions and requirements stated herein.
- 2.1.2 The contractor(s) shall provide all deliverables/services to the sole satisfaction of MoDOT.
- 2.1.3 MoDOT does not guarantee any specific quantities that may be required to be provided by the contractor(s).
- 2.1.4 MoDOT shall award one sign fabrication contract for each of the three (3) sign type categories (as referenced above) for the entire state (specified elsewhere herein).
- 2.1.5 To ensure an uninterrupted delivery of signs to MoDOT, MoDOT anticipates awarding a maximum of one (1) contingency contract for each sign type category. The contingency contract shall be based upon the second lowest bid received for each sign type.
  - a. The contingency contractor(s) shall understand and agree that MoDOT does not guarantee that any orders will be sent to the contingency contractor(s).
  - b. The contractor(s) and contingency contractor(s) shall understand and agree that the contractor selection shall be made by MoDOT and that such selection shall be final and without recourse.
  - c. The contingency contractor(s) shall understand and agree to provide services under the same contractual requirements as the contractor(s).
- 2.1.6 MoDOT reserves the right to obtain “like or similar” products as specified herein from other manufacturers, exclusive of the contract, when use of such products is deemed in the best interest of the MoDOT.
- 2.1.7 Unless otherwise specified herein, the contractor(s) shall furnish all material, labor, facilities, equipment, and supplies necessary to provide the deliverables/services required herein.

### 2.2 Specific Requirements:

- 2.2.1 The contractor(s) shall ensure all materials, equipment, and/or services bid upon complies with the Missouri Highway and Transportation Departments Missouri Standard Specifications for Highway Construction – 2011 edition and Missouri Highway and Transportations Departments Standard Plans for Highway Construction – Current Effective Standard plans (hereinafter referred to as Standard Plans and Specifications). The applicable sections of the Standard Plans that pertain to this contract will be found in sections 903.01 and 903.02. The specific sign design details found on pages 1-11 of 19 of 903.02 should be ignored as all sign design details supplied by Traffic and Highway Safety Division supersede those found in the standard. The applicable section of the Standard Specifications that pertain to this contract is section 1042. Any provision outlined in this solicitation documents supersedes any provision found in the standards and specifications. Any variations from these specifications shall be approved by MoDOT Traffic and Highway Safety Division (hereinafter referred to as Traffic Division). These two documents may be found at the URLs listed below:
  - a) [http://www.modot.mo.gov/business/standards\\_and\\_specs/Sec0903.pdf](http://www.modot.mo.gov/business/standards_and_specs/Sec0903.pdf)
  - b) [http://www.modot.mo.gov/business/standards\\_and\\_specs/Sec1042.pdf](http://www.modot.mo.gov/business/standards_and_specs/Sec1042.pdf)
- 2.2.2 The contractor(s) shall understand and agree that two (2) forms of sign substrate are used: flat sheet aluminum and extruded aluminum panel. No composite or layered substrates are acceptable unless approved by the Traffic Division.

- a. See Appendix 8a, 8b and 12 for sign aluminum gauge thicknesses and hole punching for specified sizes for flat sheet signs. The MUTCD Standard Highway Sign (SHS) manual shall be referenced for appropriate sign sizes and sign radii. See Standard 903.03 for extruded panel fabrication details. See Standard Specifications for material specifications 1042 for both flat sheet and extruded panel aluminum sign material.
  - b. Missouri uses the following two sizes of flip sign:
    - 1) The warning flip sign series consists of a standard 48" x 48" diamond sign blank as the base sign and a second blank that is ½ of a 48" x 48" diamond blank cut vertically down the center line. The ½ blank can be flipped along the vertical axis to quickly change the message displayed. The signs typically display a message in either orientation. This requires the primary blank to be created with ½ of the primary message on one half of the sign and ½ the secondary message on the other. The ½ blank carries the other halves of these messages, one on the front and one on the back.
    - 2) The Road Closed Flip sign is 60 x 30 flat sheet aluminum that flips along the horizontal centerline to display a destination message (60 x 15) or a road closed message when the sign is unfolded (60 x 30). The details for the hinges, sign blanks and example signs can be found in Appendix 4, 5, 6 and 7.
  - c. Fabrication of unique sign items will be per the Standard Plans and Specifications and Appendixes 12, 13, and 14.
- 2.2.3 The contractor(s) shall ensure all signs are retroreflective, which must be achieved by using retroreflective sheeting only (ASTM Type IV for non-florescent colors and ASTM Type IX or XI for florescent colors, direct applied legend and all delineators). The contractor shall ensure all yellow, yellow-green, and orange signs are fabricated with florescent sheeting. (See MoDOT Standard Specifications for Highway Construction 2011, Division 1000, Section 1042.2.7, Highway Sign Material – Retroreflective Sheeting for further details on specifications (available on MoDOT's web site)).
- 2.2.4 The contractor shall achieve sign legend by using one of the three following methods:
- a. Flat sheet signs are typically screen printed. Electro Cut (EC) films, both opaque black and translucent colors may be used; direct applied legend shall not be used. Vinyl products are not used by MoDOT.
  - b. Structural signs with legend 6" or smaller may be fabricated utilizing EC film (legend weeded out of field), or with direct applied legend cut from ASTM Type IX or XI sheeting.
  - c. Structural signs with legend larger than 6" upper case shall be fabricated with direct applied legend cut from ASTM IX or XI sheeting.
- 2.2.5 The contractor(s) shall ensure pictographs are fabricated using screen printing or EC films to produce an image that shall last the life of the primary signs and be totally retroreflective. The contractor(s) shall also have the ability to match pantone colors if requested. Digital printing is an option for the production of pictographs (see section 2.2.10). Example of pictographs shall include, but shall not be limited to, state and federal agency logos or college/university logos and range in colors from one (1) up to seven (7) or more. MoDOT will supply the details as described above elsewhere herein.
- 2.2.6 The contractor(s) shall include the standard MoDOT identification information on each sign face (incorporated into the screen printing of the sign or a decal on the sign face, as specified herein on Appendix 9 and 10.
- 2.2.7 The contractor(s) shall include a durable identification decal or decals on the back of each sign to assist in warranty issues, displaying the sign fabricator's information and the fabrication date. In the event the contractor(s) utilize a subcontractor to fill any part of an order, a decal for both the contractor and subcontractor must be placed on the back side of any sign fabricated by the subcontractor, see general guidance in Appendix 11.

- 2.2.8 The contractor(s) shall fabricate standard signs to MUTCD Standards or Standard Plans and Specifications unless otherwise specified by Traffic Division.
- 2.2.9 The contractor(s) shall understand and agree all non-standard / variable sign designs shall be provided by Traffic Division.
- 2.2.10 Digitally printed signs and/or components of signs will be permitted as an alternate fabrication method to MoDOT standards. All digitally printed components of signs, except for black, shall have the same or greater retroreflectivity performance as compared to EC films or translucent inks applied by a silk screen process of the same colors. Signs that are, in whole or in part, digitally printed shall have a minimum of a 10 year warranty on the entire signs. This warranty, starting from the date of fabrication on the manufacture's information decal, shall replace the entire sign in kind including shipment to the appropriate district warehouse location should the digital portion of the sign fail. Digital printing failures includes, but are not limited to, fading of colors, delaminating, peeling or chipping of printed image, or loss of retroreflectivity. MoDOT reserves the right at its discretion to remove the digital printing option from the contract if it is in the best interest of the department. Digital printing shall not be used for MoDOT and Vendor ID decals placed on signs.
- 2.2.11 MoDOT currently utilizes SignCAD for the majority of its sign design work, using TrafficCAD for graphical component design. If the contractor utilizes the same or compatible sign design software, MoDOT may submit sign designs in the SignCAD or TrafficCAD 2000 format. If these formats are not compatible with the contractor(s) systems the design can be submitted in a PDF format. Graphic details on sign designs will be provided in Adobe Illustrator (.AI) or in Encapsulated Post Script (.EPS) format.
- 2.2.12 The contractor(s) shall include any/all graphical images regardless of the number of colors. The contractor(s) shall understand and agree that the use of florescent sheeting on part of a sign, such as the exit only panels on a guide sign, shall be considered a component of the overall sign(s) and a portion of the structural Type IV signs. The contractor shall understand and agree all additional features shall be considered incidental and shall not be an additional cost to MoDOT.
- 2.2.13 The contractor(s) shall understand and agree all sign designs not found in the MUTCD Standard Highway Sign (SHS) Manual shall be detailed by Traffic Division. MoDOT shall submit the details to the contractor(s) for each sign order.
- 2.2.13 The contractor(s) must obtain prior approval from Traffic Division for variations to design and/or fabrication materials.

### **2.3 Shipping Method Requirements:**

- 2.3.1 The contractor(s) shall package signs in a manner that, at a minimum, meets the sign sheeting warranty requirements.
- 2.3.2 The contractor(s) shall ship signs in a manner which allows a single MoDOT employee to bulk off-load signs from a transport truck using a fork truck.
- a. This method shall not pose any safety risk to the employee, the transport truck or the fork truck.
  - b. Not all MoDOT facilities have access to a loading dock. Off-loading may have to take place from ground level.
  - c. Receiving conditions vary based on district location.
- 2.3.3 If requested by MoDOT, the contractor(s) shall sort a weekly order of signs for any given district. Such weekly order shall be sorted into bundles as specified on the purchase order.

- a. The sorted weekly order of signs shall be packed together for shipment to allow quick and easy dissemination after they are received by MoDOT.
- b. The sorting code (an ID number or building organizational code), as specified on the purchase order, shall be clearly displayed on the package.
- c. Signs that have no specific sorting code can be packaged together in accordance with the approved shipping methods.

2.3.4 The contractor(s) shall understand that a sign detail sheet for each sign in a structural signs shipment shall be included in the packaging to make it possible to determine what signs are included in the shipment without having to assemble the individual panels.

2.3.5 The contractor(s) shall understand that a sequence number shall be marked on the back of each extruded panel of a structural signs to indicate the sequence in which the panels are to be assembled. This may be accomplished using a permanent marking pen with the numbers being placed uniformly on either the right or left end of each panel.

**2.5 Delivery Requirements:**

2.5.1 The contractor(s) shall deliver signs to the following MoDOT locations.

|   |   | Loading Dock Available | Fork Truck Capacity |
|---|---|------------------------|---------------------|
| a | Northwest Region - St. Joseph, Missouri 64502   | YES                    | 8,000 LB            |
| b | Northeast Region - Hannibal, Missouri 63401   | YES                    | 4,500 LB            |
|   | Regional Building - Macon, Missouri 63552 ( <i>will not receive signs</i> )           | N/A                    | N/A                 |
| c | Kansas City Region - Lee's Summit, Missouri 64064-8002                                | YES                    | 6,000 LB            |
| d | Central Region - Jefferson City, Missouri 65101                                       | NO                     | 4,500 LB            |
| e | St. Louis Region - Chesterfield, Missouri 63021                                       | YES                    | 8,000 LB            |
| f | Southwest Region - Springfield, Missouri 65801  | YES                    | 8,000 LB            |
|   | Regional Building - Joplin, Missouri 64801 ( <i>typically structural signs only</i> ) | NO                     | 8,000 LB            |
| g | Southeast Region - Sikeston, Missouri 63801   | NO                     | 8,000 LB            |
|   | Regional Building - Willow Springs, MO 65793  | YES                    | 6,000 LB            |

2.5.2 The contractor(s) shall assume all responsibility for the confirmation of purchase order receipt

- a. MoDOT's method of transmission of a purchase order to the contractor(s) is through the use of an external SharePoint file system. A unique folder will be established for each contractor. The SharePoint site can be set up by the contractor(s) to auto generate an email confirmation when an order has been submitted.
- b. Alternate forms of purchase order transmission for special situations may be negotiated between MoDOT and the contractor(s).

2.5.3 *Normal Deliveries* – The contractor(s) shall receive normal delivery sign purchase orders from MoDOT on Wednesday of each week no later than 5:00 p.m. CST. In the event Wednesday is a recognized Missouri Holiday, purchase orders will be submitted by 5:00 p.m. CST on Thursday.

- a. The contractor(s) shall deliver normal delivery signs to the specified location within twenty-one (21) calendar days after receipt of a purchase order, with day one (1) of the twenty-one (21) days starting the morning after the purchase order is received. In the event that signs meeting the minimum specifications and requirements are not delivered within twenty-one (21) calendar days after the receipt of a purchase order, MoDOT shall be compensated at a rate of ten percent (10%) per day, not to exceed eighty percent (80%) of the value of the total order and until compliant product is delivered and accepted. Signs will be

considered 1 day late if delivered after 3:00 pm on day 21 unless previous arrangements are made with the receiving district.

b.

- 1) The contractor(s) must contact MoDOT no later than 24 hours after receipt of a purchase order if the contractor will not be able to fill an order. The contractor(s) shall understand and agree that the contingency contractor shall be sent the portion or all of the purchase order in such situation depending on the contractor's ability to deliver. If the contractor commits to filling a portion of the purchase order, all terms of this bid shall apply to that portion.
- 2) In the event the contractor does not contact MoDOT within 24 hours after receipt of a purchase order stating they are unable to fill the order, the contractor(s) shall understand and agree that MoDOT may cancel the purchase order with the contractor and utilize the contingency contractor to fill the order. If the contractor commits to filling a portion of the purchase order, all terms of this bid shall apply to that portion. The contractor(s) shall understand and agree late fees associated with the original order shall continue to accumulate until MoDOT receives the order from the contingency contractor.

c. At a minimum, the contractor(s) shall provide MoDOT with a 24 hour advanced notice, providing this notification by sending an email to the ordering district contact at a minimum, for a normal delivery of signs. The contractor(s) shall ensure each normal delivery of signs is made during a reasonable time of day, which allows MoDOT personnel to be available to off-load the signs. MoDOT contacts for each district will be supplied after the bid has been awarded.

d. The contractor(s) shall understand and agree normal deliveries should not be made later than 3:00 pm Monday thru Thursday. Deliveries on Fridays and after 3:00pm must be pre-approved by the receiving district office.

e. The contractor(s) shall be prohibited from manipulating normal order processing to avoid late delivery fees. Orders shall be shipped in the order received (earliest to latest). Modifications to the shipping process may only be authorized by the MoDOT Sign and Marking Engineer or designee.

f. In the event the contractor is unable to provide sign fabrication due to, but not limited to, quality issues, materials supply limitations or equipment failure, MoDOT shall utilize the contingency contractor to maintain the flow of signs to the department until such time as the contractor(s) can resolve the issue.

g. In the event the contractor is unable to fulfill the terms of the contract to the satisfaction of MoDOT due to such factors as, but not limited to, repeated late deliveries, poor quality or inability to meet specifications, MoDOT reserves the right to cancel the contract with the contractor and elevate the contingency contractor to the status of contractor for a sign type category.

2.5.3.1 *Accelerated Deliveries* – The contractor(s) understand and agree there are times MoDOT may require an order to be manufactured and delivered faster than the normal twenty one (21) day delivery. MoDOT reserves the right to place special orders with either a seven (7) day or fourteen (14) day delivery time. All conditions of the twenty one (21) day delivery stated previously apply to both the seven (7) and fourteen (14) day delivery with the following exceptions:

- a. Seven (7) and fourteen (14) day accelerated deliver orders can be submitted to the vendor any normal work day utilizing the same external SharePoint site used to transmit twenty one (21) day orders.
- b. The contractor(s) shall understand and agree normal deliveries should not be made later than 3:00 pm Monday thru Thursday; deliveries on Fridays and after 3:00pm must be pre-approved by the receiving district office. If the seventh (7<sup>th</sup>) or fourteenth (14<sup>th</sup>) day falls on a Friday and the district is unable to receive the order, the accelerated delivery will be due on the following Monday without being considered late.

- 2.5.4 *Emergency Deliveries* – The contractor(s) shall understand and agree emergency delivery sign orders may be submitted to the contractor(s) on any day of the week, including weekends and holidays. The contractor shall provide emergency contact information to allow MoDOT to make contact during these times.
- a. The contractor(s) shall deliver emergency delivery signs as specified herein to the specified location within 36 hours after the receipt of a purchase order. Emergency orders will be placed no later than 5:00 pm on the day of order. In the event that signs meeting the minimum specifications and requirements are not delivered within 36 hours after the receipt of a purchase order, MoDOT shall be compensated at a rate of fifty percent (50%) of the total order per day until compliant signs are delivered and accepted.
    - 1) The contractor(s) must contact MoDOT no later than 2 hours after receipt of a purchase order if the contractor will not be able to fill the emergency order. The contractor(s) shall understand and agree that the contingency contractor shall be sent the portion or all of the purchase order in such situation depending on the contractor’s ability to deliver. If the contractor commits to filling a portion of the purchase order, all terms of this bid shall apply to that portion.
    - 2) In the event the contractor does not contact MoDOT within 2 hours after receipt of a purchase order and fails to deliver within the 36 hour time frame, the contractor(s) shall understand and agree that MoDOT may cancel the purchase order completely and have the order filled by the contingency contractor. The contractor(s) shall understand and agree that late fees associated with the original order shall continue to accumulate until MoDOT receives the order from the contingency contractor.
  - b. In the event a contractor fails to meet the 36 hour delivery timeline for an emergency order, MoDOT reserves the right to utilize the contingency contractor to acquire the signs if the delivery time exceeds 48 hours.
    - 1) The contractor must inform MoDOT as soon as it becomes apparent of their inability to meet the demand of a given emergency order.
    - 2) The contractor shall understand and agree that the original emergency order to the contractor shall be cancelled.
    - 3) The contractor(s) shall understand and agree that any late delivery fees for the emergency order shall be accumulated and still in effect until MoDOT utilizes the contingency contractor.
    - 4) The contractor(s) shall understand and agree that utilization of the contingency contractor may include, but not be limited to, the contractor’s capacity to fill an emergency order.
    - 5) In the event an emergency order is filled using the contingency contractor, the contingency contractor shall understand and agree that all future orders shall be sent to the contractor.
  - c. The contractor(s) shall understand and agree emergency deliveries shall require a reasonable notification of the delivery time. For emergency deliveries, reasonable notification shall be deemed no less than four (4) hours before arrival of the transport truck. Notification shall be submitted using both an email and phone call to the designated district representative.
  - d. The contractor(s) shall understand and agree deliveries of emergency orders within 36 hours of receipt of a purchase order shall be made regardless of the time of day, day of week, or holidays.
- 2.5.5 The contractor(s) shall understand and agree that no normal deliveries will be made on Fridays, Saturdays, Sundays and holidays unless specifically authorized by MoDOT.

- a. The following days shall be construed as official holidays under the terms of the contract:

|                         |                                    |
|-------------------------|------------------------------------|
| January 1               | New Year's Day                     |
| Third Monday in January | Martin Luther King, Jr.'s Birthday |

|                             |                       |
|-----------------------------|-----------------------|
| February 12                 | Lincoln's Birthday    |
| Third Monday in February    | Washington's Birthday |
| May 8                       | Truman's Birthday     |
| Last Monday in May          | Memorial Day          |
| July 4                      | Independence Day      |
| First Monday in September   | Labor Day             |
| Second Monday in October    | Columbus Day          |
| November 11                 | Veteran's Day         |
| Fourth Thursday in November | Thanksgiving Day      |
| December 25                 | Christmas Day         |

- b. When any of the above holidays falls on a Sunday, the holiday will be observed on the following Monday; when any of the above holidays falls on a Saturday, the holiday will be observed on the immediately preceding Friday.

2.5.6 If requested by MoDOT, the contractor shall deliver the specified signs for a specified quantity at an accelerated lead time.

2.5.7 The contractor(s) shall understand and agree that damage occurring in transit shall be the responsibility of the contractor to correct.

**2.6 Quality Assurance/Warranty Issue Requirements:**

2.6.1 The contractor(s) shall understand and agree that MoDOT will inspect signs after delivery to determine if the signs meet specifications, quantity, and quality and to verify there was no damage incurred during shipping. MoDOT shall have five (5) business days after receipt of order (ARO) to notify the contractor of any visible damage or specification compliance issues. After the five (5) working days the contractor(s) will still be responsible for correcting any issues relating to specifications, quantity and quality, but liquidated damages will no longer be applicable.

2.6.2 The contractor(s) shall replace any sign(s) that fails inspection within the original delivery timeframe. The contractor shall understand and agree any replacement sign(s) that is shipped beyond the original delivery timeframe shall be subject to liquidated damages.

2.6.3 The contractor(s) shall handle any/all warranty issues/claims that may take place with the contractor's individual supplier(s) of materials used to fabricate signs up to one year from the date of manufacture.

- a. Within fifteen (15) calendar days of the notification of award, the contractor(s) shall provide a written copy of the manufacturer's warranty for each manufacturer to be used during the contract period.
- b. Within fifteen (15) calendar days of the notification of award, the contractor(s) shall provide a written transfer of warranty to MoDOT with the manufacturer's endorsement for each manufacturer to be used during the contract period.
- c. The contractor(s) shall agree and understand that in the event the contractor(s) changes a supplier(s), the contractor(s) shall provide the same documentation and MoDOT acceptance for the new supplier(s) as was provided for the previous supplier(s).

**2.7 Invoicing and Payment Requirements:**

2.7.1 The contractor shall submit an itemized invoice to the applicable requesting address, as specified elsewhere herein, for the completion of deliverables.

2.7.2 Each invoice should be itemized in accordance with items listed on the purchase order and/or contract. The statewide financial management system has been designed to capture certain receipt and payment information. Therefore, each invoice submitted must reference the purchase order number and must be itemized in accordance

with items listed on the purchase order. Failure to comply with this requirement may delay processing of invoices for payment.

- 2.7.3 The contractor shall be paid in accordance with the firm, fixed prices stated on the pricing spreadsheet(s) of this document after completion of deliverables specified herein and acceptance by MoDOT.
- 2.7.4 Other than the payment specified above, no other payments or reimbursements shall be made to the contractor for any reason whatsoever.
- 2.7.5 MoDOT is exempt from paying Missouri Sales Tax, Missouri Use Tax and Federal Excise Tax. However, the contractor may themselves be responsible for the payment of taxes on materials they purchase to fulfill the contract. A Federal Excise Tax Exemption Certificate will be furnished to the successful bidder upon request.
- 2.7.6 Unless otherwise provided for in the solicitation documents, MoDOT shall not make any advance deposits or payments for products until after they are received and approved by MoDOT.
- 2.7.7 MoDOT assumes no obligation for products shipped or provided in excess of the quantity ordered. Any unauthorized quantity is subject to MoDOT rejection and shall be returned at the contractor's expense.
- 2.7.8 The MoDOT reserves the right to purchase goods and services using the state-purchasing card.

## **2.8 Other Contractual Requirements:**

- 2.8.1 Contract Period - The contract shall commence from the date of award until December 31, 2014 with up to three (3) one-year renewal option periods. If the option for renewals is exercised by MoDOT, the contractor shall agree to all terms and conditions of the RFB and all subsequent amendments. Renewal options are at the sole discretion of MoDOT.
- 2.8.2 Renewal Periods - If the option for renewals is exercised by MoDOT, the contractor shall agree that the prices for the renewal periods shall not exceed the maximum percentage for the applicable renewal period stated herein.
  - a. If renewal percentages are not provided, the prices during renewal periods shall be the same as during the original contract period.
  - b. MoDOT does not automatically exercise its option for renewal based upon the maximum percentage of increase without documented justification supporting an increase, and reserves the right to offer or to request renewal of the contract at a percentage less than the maximum percentage stated.
  - c. In the event MoDOT exercises its option(s) to renew the contract, the requirements for future years shall be basically similar.
- 2.8.3 Escalation Clause - In the event the contractor requests a price increase during the contract period (original contract period or contract renewal period), the contractor must provide a written request and documentation justifying the need for a price increase, and the amount of such price increase. MoDOT will review the contractor's written request and documentation, and decide if a price increase is to be granted at that particular time. The contractor shall understand and agree that MoDOT's decision shall be final and without recourse.
  - a. No price increase shall be granted during the first 3 months of the original contract period starting from the notice to proceed, or if applicable, first 3 months of a contract period for a renewal.
  - b. In the event a price increase is granted due to an approved escalation, the renewal percentage shall be based upon the current contract value.
- 2.8.4 The contractor shall understand and agree that any subcontracts used to provide the products required in the contract is solely between the contractor and their subcontractor(s). The use of subcontractors in no way relieves the contractor of any of the contractual obligations to ensure the successful fulfillment of all contractual obligations

agreed to by the contractor and MoDOT. Any contracts between the contractor and their subcontractor(s) shall ensure that MoDOT is indemnified, saved, and held harmless from and against any and all claims of damage, loss, and cost (including attorney fees) of any kind related to a subcontract in those matters described in the contract between MoDOT and the contractor.

- a. The contractor shall expressly understand and agree that he/she shall assume and be solely responsible for all legal and financial responsibilities related to the execution of a subcontract.
- b. The contractor shall agree and understand that utilization of a subcontractor to provide any of the products/services in the contract shall in no way relieve the contractor of the responsibility for providing the products/services as described and set forth herein.



Lowest Responsive Price X 95 = Cost score points extended to 2 decimal places - 95.00 possible  
Compared Price

b. ***Line Items for Emergency Delivery –***

Lowest Responsive Price X 1 = Cost score points extended to 2 decimal places - 1.00 possible  
Compared Price

c. Accelerated Lead Times for Normal Deliveries shall be included in the cost evaluation.

***7 day Lead Time for Normal Deliveries -***

Lowest Responsive Price X 2 = Cost score points extended to 2 decimal places - 2.00 possible  
Compared Price

***14 day Lead Time for Normal Deliveries -***

Lowest Responsive Price X 2 = Cost score points extended to 2 decimal places - 2.00 possible  
Compared Price

d. Renewal Options shall not be included in the cost evaluation.

3.1.7 Contract Award – MoDOT reserves the right to award up to two (2) contracts within each sign type category for each district. The selection of contractor to be used for each of the three (3) sign type categories for the entire state shall be based upon the lowest competitive bid.

3.1.8 It is the sole responsibility for all bidders to check the website for bid results.

**4. PRICING PAGE**

*The bidder shall provide firm, fixed and delivered pricing in the table below for providing the deliverables in accordance with the provisions and requirements of the RFB.*

| FLAT SHEET |                 |          |                           |                                    |                    |               |                       |                      |            |
|------------|-----------------|----------|---------------------------|------------------------------------|--------------------|---------------|-----------------------|----------------------|------------|
| Item #     | Product         | Color    | Dimention/<br>Orientation | Sheeting Type                      | Unit of<br>Measure | Delivery Time |                       |                      |            |
|            |                 |          |                           |                                    |                    | 21 day normal | 14 day<br>accelerated | 7 day<br>accelerated | 36 hr rush |
| 001        | Flat Sheet Sign | Variable | Single Sided              | Type IV Sheeting                   | Square Foot        |               |                       |                      |            |
| 002        | Flat Sheet Sign | Variable | Double Sided              | Type IV Sheeting                   | Square Foot        |               |                       |                      |            |
| 003        | Flat Sheet Sign | Variable | Single Sided              | Type IX or XI Fluorescent Sheeting | Square Foot        |               |                       |                      |            |
| 004        | Flat Sheet Sign | Variable | Double Sided              | Type IX or XI Fluorescent Sheeting | Square Foot        |               |                       |                      |            |

| Structural Signs |                 |          |                           |                                    |                    |               |                       |                      |            |
|------------------|-----------------|----------|---------------------------|------------------------------------|--------------------|---------------|-----------------------|----------------------|------------|
| Item #           | Product         | Color    | Dimention/<br>Orientation | Sheeting Type                      | Unit of<br>Measure | Delivery Time |                       |                      |            |
|                  |                 |          |                           |                                    |                    | 21 day normal | 14 day<br>accelerated | 7 day<br>accelerated | 36 hr rush |
| 005              | Structural Sign | Variable |                           | Type IV Sheeting                   | Square Foot        |               |                       |                      |            |
| 006              | Structural Sign | Yellow   |                           | Type IX or XI Fluorescent Sheeting | Square Foot        |               |                       |                      |            |

| Unique Signs |                                |               |                           |                                    |                    |               |                       |                      |  |
|--------------|--------------------------------|---------------|---------------------------|------------------------------------|--------------------|---------------|-----------------------|----------------------|--|
| Item #       | Product                        | Color         | Dimention/<br>Orientation | Sheeting Type                      | Unit of<br>Measure | Delevery Time |                       |                      |  |
|              |                                |               |                           |                                    |                    | 21 day normal | 14 day<br>accelerated | 7 day<br>accelerated |  |
| 007          | Channel Post Delineator        | Red           | 3" x 6"                   | Type IX or XI Sheeting             | Each               |               |                       |                      |  |
| 008          | Channel Post Delineator        | White         | 3" x 6"                   | Type IX or XI Sheeting             | Each               |               |                       |                      |  |
| 009          | Channel Post Delineator        | Yellow        | 3" x 6"                   | Type IX or XI Fluorescent Sheeting | Each               |               |                       |                      |  |
| 010          | Sign Post Delineator           | Red           | 4" x 6'                   | Type IX or XI Sheeting             | Each               |               |                       |                      |  |
| 011          | Sign Post Delineator           | White         | 4" x 6'                   | Type IX or XI Sheeting             | Each               |               |                       |                      |  |
| 012          | Sign Post Delineator           | Yellow        | 4" x 6'                   | Type IX or XI Fluorescent Sheeting | Each               |               |                       |                      |  |
| 013          | Sign Post Delineator           | Yellow-Green  | 4" x 6'                   | Type IX or XI Fluorescent Sheeting | Each               |               |                       |                      |  |
| 014          | Guard Cable Delineator         | White         | 4 inch x 50 yd role       | Type IX or XI Sheeting             | Each               |               |                       |                      |  |
| 015          | Guard Cable Delineator         | Yellow        | 4 inch x 50 yd role       | Type IX or XI Fluorescent Sheeting | Each               |               |                       |                      |  |
| 016          | Stop / Stop Paddle w/Handle    | Red           | See Appendix 13           | See Appendix 13                    | Each               |               |                       |                      |  |
| 017          | Stop / Slow Paddle w/Handle    | Red/Orange    | See Appendix 13           | See Appendix 13                    | Each               |               |                       |                      |  |
| 018          | Slow Moving Vehicle Plaque     | Red/Orange    | See Appendix 14           | See Appendix 14                    | Each               |               |                       |                      |  |
| 019          | Flip Sign                      | Yellow/Orange | 48" x 48" Diamond         | Type IX or XI Fluorescent Sheeting | Each               |               |                       |                      |  |
| 020          | Flip Sign                      | Green/White   | 60" x 30" Rectangle       | Type IV Sheeting                   | Each               |               |                       |                      |  |
| 021          | Guard Rail Object Marker Decal | Black/Yellow  | 12" x 12"                 | Type IX or XI Fluorescent Sheeting | Each               |               |                       |                      |  |
| 022          | Guard Rail Object Marker Decal | Black/Yellow  | 18" x 18"                 | Type IX or XI Fluorescent Sheeting | Each               |               |                       |                      |  |

**4.1 Renewal Period**

The bidder shall provide below the maximum percentage of increase or decrease for the renewal period. The percentage shall be

1<sup>st</sup> Renewal Period \_\_\_\_\_% of maximum increase and/or \_\_\_\_\_ % of maximum decrease

2<sup>nd</sup> Renewal Period \_\_\_\_\_% of maximum increase and/or \_\_\_\_\_ % of maximum decrease

3<sup>rd</sup> Renewal Period \_\_\_\_\_% of maximum increase and/or \_\_\_\_\_ % of maximum decrease

4<sup>th</sup> Renewal Period \_\_\_\_\_% of maximum increase and/or \_\_\_\_\_ % of maximum decrease

## VENDOR INFORMATION & PREFERENCE CERTIFICATION FORM

### Vendor Information

**All bidders must furnish ALL applicable information requested below**

|   |  |
|---|--|
| <b>Vendor Name/Mailing Address:</b><br><br>Email Address: | <b>Vendor Contact Information (including area codes):</b><br>Phone #:<br>Cellular #:<br>Fax #: |
| <b>Printed Name of Responsible Officer or Employee:</b>   | <b>Signature:</b>  |
| <b>For Corporations - State in which incorporated:</b>    | <b>For Others - State of domicile:</b>   |

If the address listed in the Vendor Name/Mailing Address block above is not located in the State of Missouri, list the address of Missouri offices or places of business:

*If additional space is required, please attach an additional sheet and identify it as **Addresses of Missouri Offices or Places of Business.***

**M/WBE INFORMATION:** List all certified Minority or Women Business Enterprises (**M/WBE**) utilized in the fulfillment of this bid. Include percentages for subcontractors and identify the M/WBE certifying agency:

| <u>M/WBE Name</u> | <u>Percentage of Contract</u> | <u>M/WBE Certifying Agency</u> |
|-------------------|-------------------------------|--------------------------------|
|                   |                               |                                |
|                   |                               |                                |

*If additional space is required, please attach an additional sheet and identify it as **M/WBE Information***

### Preference Certification

**All bidders must furnish ALL applicable information requested below**

**GOODS/PRODUCTS MANUFACTURED OR PRODUCED IN USA:** If any or all of the goods or products offered in the attached bid which the bidder proposes to supply to the MHTC are **not** manufactured or produced in the "United States", or imported in accordance with a qualifying treaty, law, agreement, or regulation, list below, by item or item number, the country other than the United States where each good or product is manufactured or produced.

| Item (or item number) | Location Where Item is Manufactured or Produced |
|-----------------------|---|
|                       |   |
|                       |   |

*If additional space is required, please attach an additional sheet and identify it as **Location Products are Manufactured or Produced.***

**MISSOURI SERVICE-DISABLED VETERAN BUSINESS:** Please complete the following if applicable. Additional information may be requested if preference is applicable. See below definitions for qualification criteria:

**Service-Disabled Veteran** is defined as any individual who is disabled as certified by the appropriate federal agency responsible for the administration of veterans' affairs.

**Service-Disabled Veteran Business** is defined as a business concern:

- a. Not less than fifty-one (51) percent of which is owned by one or more service-disabled veterans or, in the case of any publicly owned business, not less than fifty-one (51) percent of the stock of which is owned by one or more service-disabled veterans; and
- b. The management and daily business operations of which are controlled by one or more service-disabled veterans.

| <u>Veteran Information</u>                     | <u>Business Information</u>                           |
|--|---|
| Service-Disabled Veteran's Name (Please Print) | Service-Disabled Veteran Business Name                |
|  |   |
| Service-Disabled Veteran's Signature           | Missouri Address of Service Disabled Veteran Business |

**COOPERATIVE AGREEMENT NOTICE**

The MoDOT is interested in assisting Missouri governmental entities, etc. in purchasing equipment, various materials, and supplies that meet the MoDOT specifications.

Each bidder is asked to indicate below whether they would be willing to offer **Sign Fabrication** listed in the attached "Request for Bid" for sale to these local political entities at the same bid price offered to this MoDOT.

It is understood the MoDOT will not issue purchase orders, accept delivery nor make payment for these items ordered by any of these agencies. It is further understood the price is based on the **Sign Fabrication** meeting the MoDOT specifications. Any added options, deletions, or extra freight costs would be negotiated between the local agency and the successful vendor.

Indicate below whether your company is willing to offer such cooperative purchasing for Missouri counties, cities or other political entities.

YES \_\_\_\_\_ NO \_\_\_\_\_

If the price varies throughout the state on MoDOT bids because of different delivery destinations, please indicate the price f.o.b. your location that would be offered as described.

F.O.B. Location \_\_\_\_\_

Indicate the deadline date that orders will be accepted. \_\_\_\_\_

COMPANY NAME \_\_\_\_\_

ADDRESS \_\_\_\_\_

PHONE NUMBER \_\_\_\_\_

SIGNATURE \_\_\_\_\_

TITLE \_\_\_\_\_

DATE \_\_\_\_\_

**Missouri Highways and Transportation Commission**  
**Standard Bid/Proposal Provisions, General Terms and Conditions and Special Terms and Conditions**

**STANDARD SOLICITATION PROVISIONS**

- a. The solicitation for the procurement of the supplies referenced therein, to which these "Standard Bid Provisions, General Terms and Conditions and Special Terms and Conditions" are attached, is being issued under, and governed by, the provisions of Title 7 – Missouri Department of Transportation, Division 10 – Missouri Highways and Transportation Commission, Chapter 11 – Procurement of Supplies, of the Code of State Regulations. The Missouri Highways and Transportation Commission (**MHTC**), acting by and through its operating arm, the Missouri Department of Transportation (**MoDOT**), draws the Bidder's attention to said 7 CSR 10-11 for all the provisions governing solicitation and receipt of bids/quotes and the award of the contract pursuant to this solicitation.
- b. All bids/quotes must be signed with the firm name and by a responsible officer or employee. Obligations assumed by such signature must be fulfilled.

**GENERAL TERMS AND CONDITIONS**

**Definitions**

Capitalized terms as well as other terms used but not defined herein shall have the meaning assigned to them in section 7 CSR 10-11.010 Definition of Terms.

**Nondiscrimination**

- a. The Contractor shall comply with all state and federal statutes applicable to the Contractor relating to nondiscrimination, including, but not limited to, Chapter 213, RSMo; Title VI and Title VII of Civil Rights Act of 1964 as amended (42 U.S.C. Sections 2000d and 2000e, *et seq.*); and with any provision of the "Americans with Disabilities Act" (42 U.S.C. Section 12101, *et seq.*)
- b. **Sanctions for Noncompliance:** In the event of the Contractor's noncompliance with the nondiscrimination provisions of this contract, MHTC shall impose such contract sanctions as it or the Federal Highway Administration may determine to be appropriate, including, but not limited to:
  - i. withholding of payments to the Contractor under the contract until the Contractor complies, and/or,
  - ii. cancellation, termination or suspension of the contract, in whole or in part.

**Contract/Purchase Order**

- a. By submitting a bid/quote, the Bidder agrees to furnish any and all equipment, supplies and/or services specified in the solicitation documents, at the prices quoted, pursuant to all requirements and specifications contained therein.
- b. A binding contract shall consist of: (1) the solicitation documents, amendments thereto, and/or Best and Final Offer (BAFO) request(s) with any changes/additions, (2) the Contractor's bid response, and (3) the MHTC's acceptance of the bid by post-award contract or purchase order.
- c. A notice of award does not constitute an authorization for shipment of equipment or supplies or a directive to proceed with services. Before providing equipment, supplies and/or services, the Contractor must receive a properly authorized notice to proceed and/or purchase order.

**Applicable Laws and Regulations**

- a. The contract shall be construed according to the laws of the State of Missouri. The Contractor shall comply with all local, state, and federal laws and regulations related to the performance of the contract. The exclusive venue for any legal proceeding relating to or arising, out of the contract shall be in the Circuit Court of Cole County, Missouri.
- b. The Contractor must be registered and maintain good standing with the Secretary of State of the State of Missouri, Missouri Department of Revenue, and other regulatory agencies, as may be required by law or regulations. Prior to the issuance of a purchase order and/or notice to proceed, the Contractor may be required to submit to MHTC a copy of their current Authority Certificate from the Secretary of State of the State of Missouri and/or a copy of their Certificate of No Tax Due from the Missouri Department of Revenue.
- c. Prior to the issuance of a purchase order and/or notice to proceed, all **out-of-state** Contractors **providing services** within the state of Missouri must submit to MHTC a copy of their current Transient Employer Certificate from the Missouri Department of Revenue, in addition to a copy of their current Authority Certificate from the Secretary of State of the State of Missouri.

**Executive Order:**

The Contractor shall comply with all the provisions of Executive Order 07-13, issued by the Honorable Matt Blunt, Governor of Missouri, on the sixth (6<sup>th</sup>) day of March, 2007. This Executive Order, which promulgates the State of Missouri's position to not tolerate persons who contract with the state engaging in or supporting illegal activities of employing individuals who are not eligible to work in the United States, is incorporated herein by reference and made a part of this Agreement.

- 1) "By signing this Agreement, the Contractor hereby certifies that any employee of the Contractor assigned to perform services under the contract is eligible and authorized to work in the United States in compliance with federal law."
- 2) In the event the Contractor fails to comply with the provisions of the Executive Order 07-13, or in the event the Commission has reasonable cause to believe that the contractor has knowingly employed individuals who are not eligible to work in the United States in violation of federal law, the Commission reserves the right to impose such contract sanctions as it may determine to be appropriate, including but not limited to contract cancellation, termination or suspension in whole or in part or both.
- 3) The Contractor shall include the provisions of this paragraph in every subcontract. The Contractor shall take such action with respect to any subcontract as the Commission may direct as a means of enforcing such provisions, including sanctions for noncompliance.

**Preferences**

- a. In the evaluation of bids/quotes, preferences shall be applied in accordance with 7 CSR 10-11.020(7). Contractors should apply the same preferences in selecting subcontractors. The attached document entitled "**VENDOR INFORMATION AND PREFERENCE CERTIFICATION FORM**" must be completed and returned with the solicitation documents.
- b. Bidders are encouraged to obtain minority business enterprise (MBE) and women business enterprise (WBE) participation in this work through the use of subcontractors, suppliers, joint ventures, or other arrangements that afford meaningful participation for M/WBES. Bidders are encouraged to obtain 10% MBE and 5% WBE participation.

**Missouri Highways and Transportation Commission**  
**Standard Bid/Proposal Provisions, General Terms and Conditions and Special Terms and Conditions**

**Cancellation of Contract**

The MHTC may cancel the Contract at any time for a material breach of contractual obligations or for convenience by providing Contractor with written notice of cancellation. Should the MHTC exercise its right to cancel the contract for such reasons, cancellation will become effective upon the date specified in the notice of cancellation sent to the Contractor.

**Bankruptcy or Insolvency**

Upon filing for any bankruptcy or insolvency proceeding by or against the Contractor, whether voluntarily, or upon the appointment of a receiver, trustee, or assignee, for the benefit of creditors, the Commission reserves the right and sole discretion to either cancel the Agreement or affirm the Agreement and hold the Contractor responsible for damages.

**Warranty**

The Contractor expressly warrants that all equipment, supplies, and/or services provided shall: (1) conform to each and every specification, drawing, sample or other description which was furnished to or adopted by the MHTC, (2) be fit and sufficient for the purpose expressed in the solicitation documents, (3) be merchantable, (4) be of good materials and workmanship, and (5) be free from defect.

**Status of Independent Contractor**

The Contractor represents itself to be an independent Contractor offering such services to the general public and shall not represent itself or its employees to be an employee of the MHTC. Therefore, the Contractor shall assume all legal and financial responsibility for taxes, FICA, employee fringe benefits, workers' compensation, employee insurance, minimum wage requirements, overtime, etc., and agrees to indemnify, save and hold the MHTC, its officers, agents and employees harmless from and against any and all losses (including attorney fees) and damage of any kind related to such matters.

**Non-Waiver**

If one of the parties agrees to waive its right to enforce any term of this Contract, that party does not waive its right to enforce such term at any other time or to enforce any or all other terms of this Contract.

**Indemnification**

The Contractor shall defend, indemnify and hold harmless MHTC, including its members and department employees, from any claim or liability whether based on a claim for damages to real or personal property or to a person for any matter relating to or arising out of the Contractor's performance of its obligations under the contract awarded pursuant to this solicitation.

# Appendix 1

## Historical Sign Order Rates Fiscal Year 2013

| District           | Quarter | Flat Sheet Signs   |                | Structural Signs |               | Unique          |       | District Quarterly Totals | District Totals    |
|--------------------|---------|--------------------|----------------|------------------|---------------|-----------------|-------|---------------------------|--------------------|
|                    |         | Value              | Sqft           | Value            | Sqft          | Value           | Sqft  |                           |                    |
| NW                 | 1ST QRT | \$29,901           | 6,077          |                  |               | \$11,939        | 1,164 | \$2,475                   | \$44,315           |
|                    | 2ND QRT | \$20,767           | 4,221          |                  |               | \$4,434         | 432   | \$17                      | \$25,217           |
|                    | 3RD QRT | \$61,129           | 12,425         | \$189,078        | 38,430        | \$14,706        | 1,433 | \$849                     | \$76,684           |
|                    | 4TH QRT | \$77,281           | 15,708         |                  |               | \$11,174        | 1,089 | \$1,543                   | \$89,998           |
| NE                 | 1ST QRT | \$8,243            | 1,675          |                  |               | \$4,403         | 429   | \$1,801                   | \$14,447           |
|                    | 2ND QRT | \$27,907           | 5,672          |                  |               | \$17,405        | 1,696 | \$0                       | \$45,311           |
|                    | 3RD QRT | \$10,151           | 2,063          | \$52,824         | 10,737        | \$2,789         | 270   | \$0                       | \$12,919           |
|                    | 4TH QRT | \$6,523            | 1,326          |                  |               | \$4,032         | 393   | \$598                     | \$11,153           |
| KC                 | 1ST QRT | \$15,320           | 3,114          |                  |               | \$2,036         | 198   | \$545                     | \$17,901           |
|                    | 2ND QRT | \$46,991           | 9,551          | \$123,121        | 25,024        | \$20,258        | 1,974 | \$0                       | \$67,249           |
|                    | 3RD QRT | \$26,214           | 5,328          |                  |               | \$3,055         | 298   | \$2,483                   | \$31,751           |
|                    | 4TH QRT | \$34,596           | 7,032          |                  |               | \$10,957        | 1,068 | \$0                       | \$45,552           |
| CD                 | 1ST QRT | \$14,516           | 2,950          |                  |               | \$20,191        | 1,968 | \$0                       | \$34,707           |
|                    | 2ND QRT | \$21,223           | 4,314          |                  |               | \$37,786        | 3,683 | \$1,047                   | \$60,056           |
|                    | 3RD QRT | \$11,760           | 2,390          | \$51,709         | 10,510        | \$11,353        | 1,106 | \$270                     | \$23,383           |
|                    | 4TH QRT | \$4,210            | 856            |                  |               | \$0             | 0     | \$0                       | \$4,210            |
| SL                 | 1ST QRT | \$27,422           | 5,574          |                  |               | \$21,867        | 2,131 | \$1,151                   | \$50,440           |
|                    | 2ND QRT | \$22,418           | 4,556          |                  |               | \$11,944        | 1,164 | \$956                     | \$35,318           |
|                    | 3RD QRT | \$16,273           | 3,308          | \$78,522         | 15,960        | \$38,358        | 3,739 | \$1,211                   | \$55,842           |
|                    | 4TH QRT | \$12,409           | 2,522          |                  |               | \$7,021         | 684   | \$0                       | \$19,431           |
| SW                 | 1ST QRT | \$33,062           | 6,720          |                  |               | \$42,948        | 4,186 | \$2,716                   | \$78,726           |
|                    | 2ND QRT | \$42,400           | 8,618          |                  |               | \$11,855        | 1,156 | \$67                      | \$54,323           |
|                    | 3RD QRT | \$28,371           | 5,766          | \$184,389        | 37,477        | \$17,962        | 1,751 | \$0                       | \$46,333           |
|                    | 4TH QRT | \$80,555           | 16,373         |                  |               | \$27,645        | 2,694 | \$897                     | \$109,098          |
| SE                 | 1ST QRT | \$8,301            | 1,687          |                  |               | \$17,347        | 1,691 | \$0                       | \$25,648           |
|                    | 2ND QRT | \$77,981           | 15,850         |                  |               | \$3,333         | 325   | \$897                     | \$82,211           |
|                    | 3RD QRT | \$165,598          | 33,658         | \$350,534        | 71,247        | \$16,359        | 1,594 | \$897                     | \$182,854          |
|                    | 4TH QRT | \$98,654           | 20,052         |                  |               | \$19,923        | 1,942 | \$1,197                   | \$119,774          |
| <b>STATE TOTAL</b> |         | <b>\$1,030,176</b> | <b>209,385</b> | <b>\$413,059</b> | <b>40,259</b> | <b>\$21,614</b> |       |                           | <b>\$1,464,849</b> |

Notes: 2013 Fiscal Year = July 1, 2012 to June 30, 2013  
 Square footage is an estimate using actual dollar amounts purchased divided by average state cost per sqft for type IV sheeted signs

## Appendix 2

---

### Emergency, 7 and 14 Day Accelerated Orders Placed in Fiscal Year 2013

#### Flat Sheet Signs

|               | Emergency Deliveries |               | 7 Day Accelerated |               | 14 Day Accelerated |               |
|---------------|----------------------|---------------|-------------------|---------------|--------------------|---------------|
|               | # Orders             | SqFt of Signs | # Orders          | SqFt of Signs | # Orders           | SqFt of Signs |
| NW            | 2                    | 94            | 5                 | 99            | 1                  | 32            |
| NE            | 1                    | 116           | 3                 | 1220          | 2                  | 176           |
| KC            | 1                    | 203           | 4                 | 664           |                    |               |
| CD            | 1                    | 203           |                   |               |                    |               |
| SL            | 1                    | 290           | 2                 | 169           | 1                  | 239           |
| SW            | 5                    | 246           | 3                 | 152           |                    |               |
| SW            | 1                    | 87            | 13                | 2527          |                    |               |
| <b>TOTALS</b> | <b>12</b>            | <b>1239</b>   | <b>30</b>         | <b>4831</b>   | <b>4</b>           | <b>447</b>    |

#### Structural Signs

|               | Emergency Deliveries |               | 7 Day Accelerated |               | 14 Day Accelerated |               |
|---------------|----------------------|---------------|-------------------|---------------|--------------------|---------------|
|               | # Orders             | SqFt of Signs | # Orders          | SqFt of Signs | # Orders           | SqFt of Signs |
| NW            |                      |               | 1                 | 23            |                    |               |
| NE            |                      |               | 1                 | 144           | 1                  | 3007          |
| KC            |                      |               |                   |               |                    |               |
| CD            |                      |               |                   |               |                    |               |
| SL            |                      |               | 1                 | 18            | 1                  | 284           |
| SW            |                      |               | 1                 | 14            |                    |               |
| SE            |                      |               | 5                 | 707           |                    |               |
| <b>TOTALS</b> | <b>0</b>             | <b>0</b>      | <b>9</b>          | <b>906</b>    | <b>2</b>           | <b>3291</b>   |

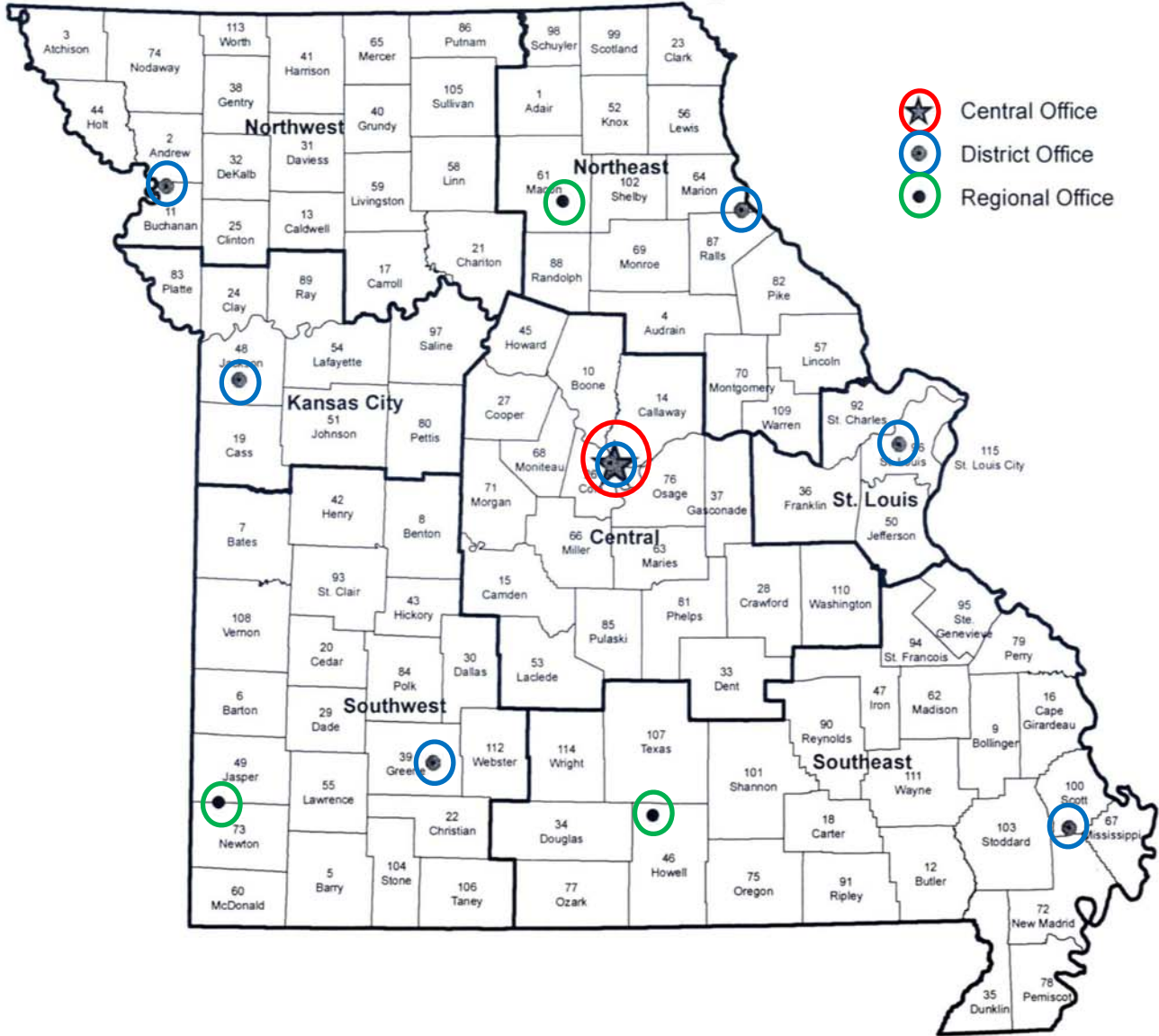
#### Unique Signs

|               | Emergency Deliveries |               | 7 Day Accelerated |               | 14 Day Accelerated |               |
|---------------|----------------------|---------------|-------------------|---------------|--------------------|---------------|
|               | # Orders             | SqFt of Signs | # Orders          | SqFt of Signs | # Orders           | SqFt of Signs |
| NW            |                      |               |                   |               |                    |               |
| NE            |                      |               |                   |               |                    |               |
| KC            |                      |               |                   |               |                    |               |
| CD            |                      |               |                   |               |                    |               |
| SL            |                      |               |                   |               |                    |               |
| SW            |                      |               | 1                 | 50            |                    |               |
| SE            |                      |               |                   |               |                    |               |
| <b>TOTALS</b> | <b>0</b>             | <b>0</b>      | <b>1</b>          | <b>50</b>     | <b>0</b>           | <b>0</b>      |

Fiscal Year = July 1<sup>st</sup> to June 31<sup>st</sup>

# Appendix 3

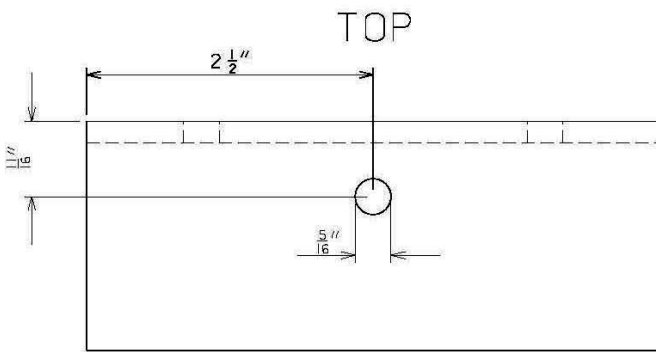
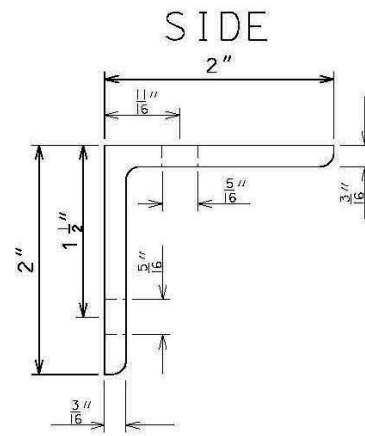
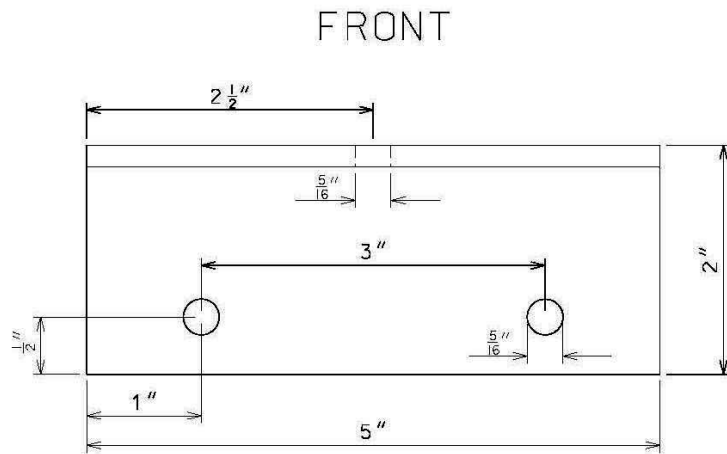
## Missouri Department of Transportation District Map



| County         | No. Dist. | County | No. Dist. | County | No. Dist. | County     | No. Dist. | County | No. Dist.   | County | No. Dist. |                |     |    |                |     |    |
|----------------|-----------|--------|-----------|--------|-----------|------------|-----------|--------|-------------|--------|-----------|----------------|-----|----|----------------|-----|----|
| Adair          | 1         | NE     | Chariton  | 21     | NW        | Harrison   | 41        | NW     | Macon       | 61     | NE        | Phelps         | 81  | C  | Shannon        | 101 | SE |
| Andrew         | 2         | NW     | Christian | 22     | SW        | Henry      | 42        | SW     | Madison     | 62     | SE        | Pike           | 82  | NE | Shelby         | 102 | NE |
| Atchison       | 3         | NW     | Clark     | 23     | NE        | Hickory    | 43        | SW     | Marion      | 64     | NE        | Platte         | 83  | KC | Stoddard       | 103 | SE |
| Audrian        | 4         | NE     | Clay      | 24     | KC        | Holt       | 44        | NW     | Marion      | 64     | NE        | Polk           | 84  | SW | Stone          | 104 | SW |
| Barry          | 5         | SW     | Clinton   | 25     | NW        | Howard     | 45        | C      | Mercer      | 65     | NW        | Pulaski        | 85  | C  | Sullivan       | 105 | NW |
| Barton         | 6         | SW     | Cole      | 26     | C         | Howell     | 46        | SE     | Miller      | 66     | C         | Putnam         | 86  | NW | Taney          | 106 | SW |
| Bates          | 7         | SW     | Cooper    | 27     | C         | Iron       | 47        | SE     | Mississippi | 67     | SE        | Ralls          | 87  | NE | Texas          | 107 | SE |
| Benton         | 8         | SW     | Crawford  | 28     | C         | Jackson    | 48        | KC     | Moniteau    | 68     | C         | Randolph       | 88  | NE | Vernon         | 108 | SW |
| Bollinger      | 9         | SE     | Dade      | 29     | SW        | Jasper     | 49        | KC     | Monroe      | 69     | NE        | Ray            | 89  | KC | Warren         | 109 | NE |
| Boone          | 10        | C      | Dallas    | 30     | SW        | Jefferson  | 50        | SL     | Montgomery  | 70     | NE        | Reynolds       | 90  | SE | Washington     | 110 | C  |
| Buchanan       | 11        | NW     | Davies    | 31     | NW        | Johnson    | 51        | KC     | Morgan      | 71     | C         | Ripley         | 91  | SE | Wayne          | 111 | SE |
| Butler         | 12        | SE     | Dekalb    | 32     | NW        | Knox       | 52        | NE     | New Madrid  | 72     | SE        | St. Charles    | 92  | SL | Webster        | 112 | SW |
| Caldwell       | 13        | NW     | Dent      | 33     | C         | Laclede    | 53        | C      | Newton      | 73     | SW        | St. Clair      | 93  | SW | Worth          | 113 | NW |
| Callaway       | 14        | C      | Douglas   | 34     | SE        | Lafayette  | 54        | KC     | Nodaway     | 74     | NW        | St. Francois   | 94  | SE | Wright         | 114 | SE |
| Camden         | 15        | C      | Dunklin   | 35     | SE        | Lawrence   | 55        | SW     | Oregon      | 75     | SE        | Ste. Genevieve | 95  | SE | St. Louis City | 115 | SL |
| Cape Girardeau | 16        | SE     | Franklin  | 36     | SL        | Lewis      | 56        | NE     | Osage       | 76     | C         | St. Louis      | 96  | SL |                |     |    |
| Carroll        | 17        | NW     | Gasconade | 37     | C         | Lincoln    | 57        | NE     | Ozark       | 77     | SE        | Saline         | 97  | KC |                |     |    |
| Carter         | 18        | SE     | Gentry    | 38     | NW        | Linn       | 58        | NW     | Pemiscot    | 78     | SE        | Schuyler       | 98  | NE |                |     |    |
| Cass           | 19        | KC     | Greene    | 39     | SW        | Livingston | 59        | NW     | Perry       | 79     | SE        | Scotland       | 99  | NE |                |     |    |
| Cedar          | 20        | SW     | Grundy    | 40     | NW        | McDonald   | 60        | SW     | Pettis      | 80     | KC        | Scott          | 100 | SE |                |     |    |



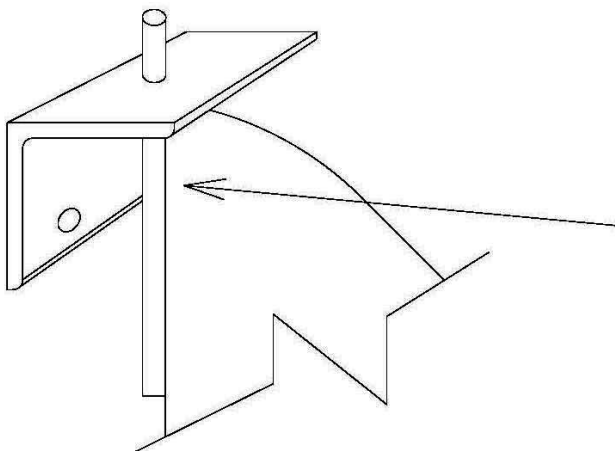
## Flip Sign (Warning Sign) Hinge Detail



Fabricated from a standard  
2" x 2" x  $\frac{3}{16}$ " aluminum angle

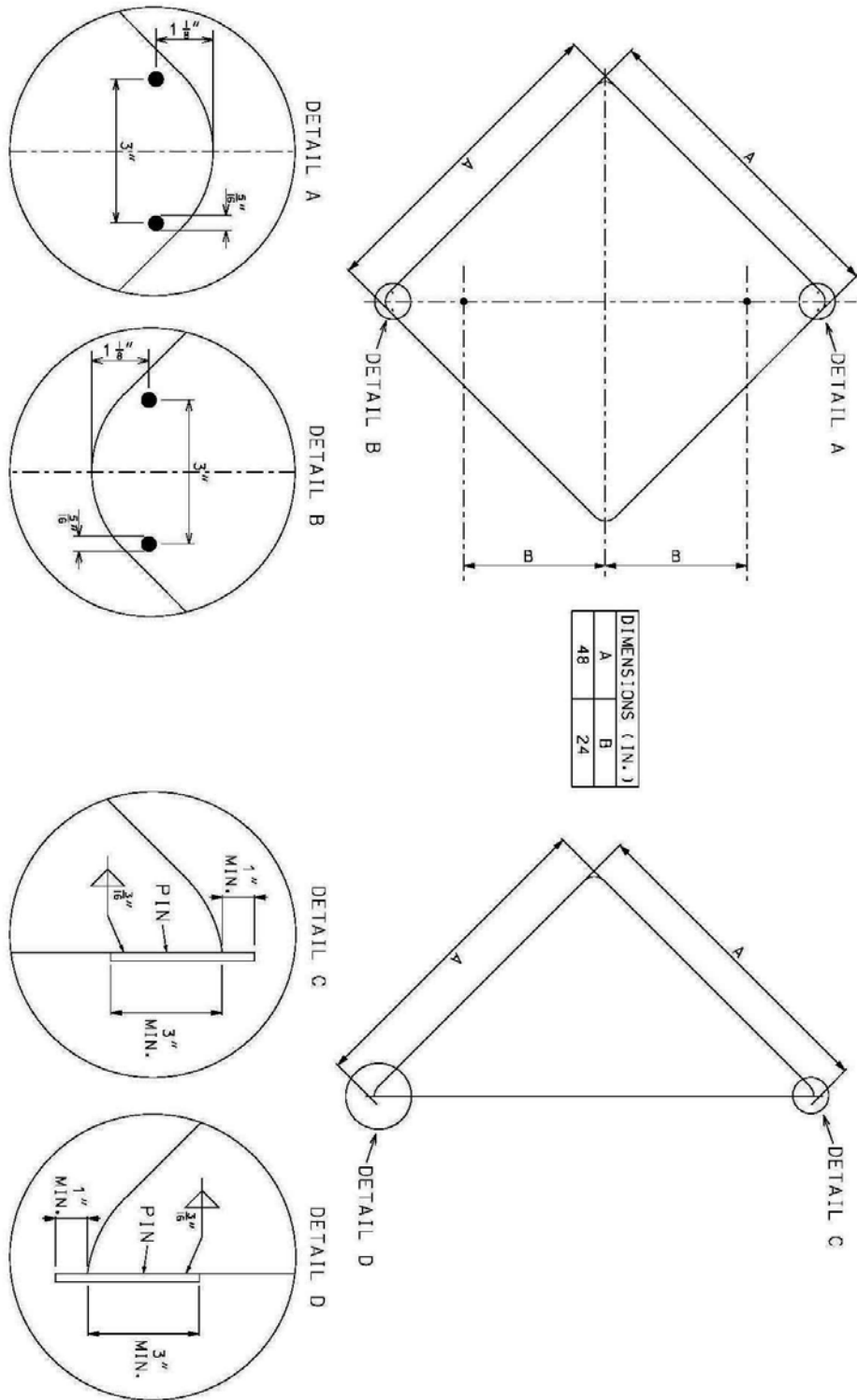
All holes drilled to  $\frac{5}{16}$ "  
diameter

All burrs and rough edges  
shall be removed



NOTE:  
See Appendix 5 for  
Hinge Pin Detail

# Flip Sign Warning Blank Detail



GENERAL NOTES:

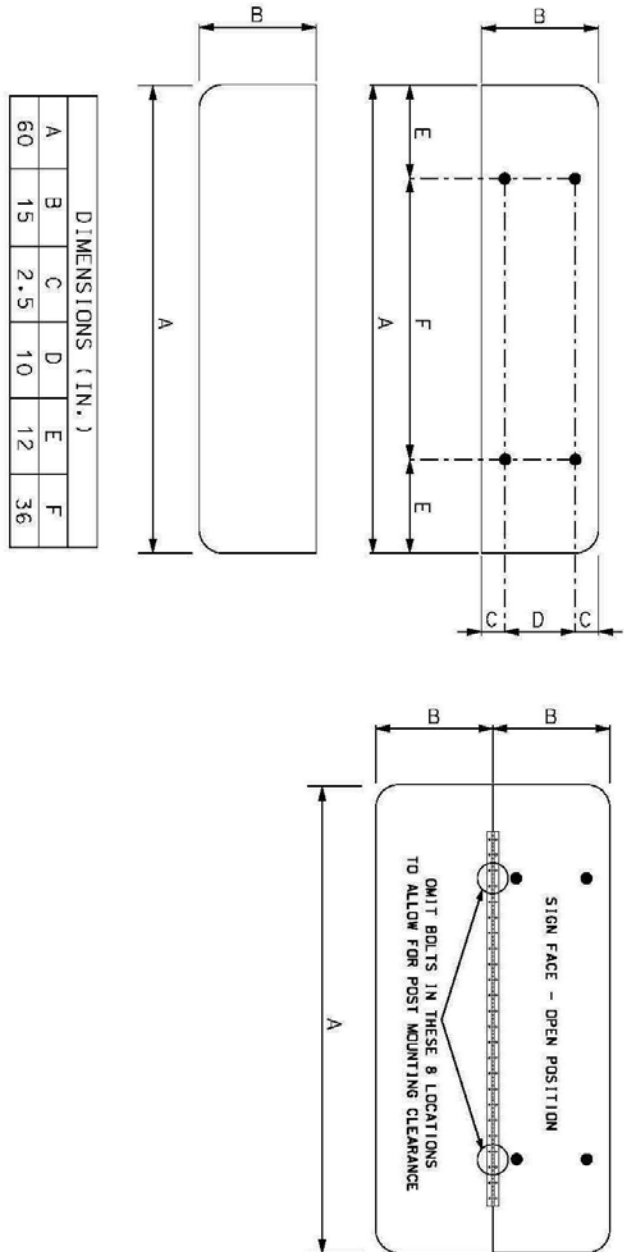
THICKNESS OF BLANK SHALL BE 0.125 IN.

DIAMETER OF THE PIN SHALL BE 0.25 IN. ALUMINUM

PINS SHALL BE FULLY WELDED TO THE TOP AND BOTTOM OF THE BLANK.

STAINLESS STEEL NUTS, BOLTS AND LOCK WASHERS (LOCK NUTS MAY ALSO BE USED) TO SECURE HINGES TO SIGN BLANK

# Flip Sign Road Closed Blank Detail



**GENERAL NOTES:**

- THICKNESS OF BLANK SHALL BE 0.125 IN.
- ROAD CLOSED SIGN SHALL BE HINGED USING A 1 1/2" X 48" NICKLE PLATED PIANO HINGE.
- HINGE SHALL BE CENTERED HORIZONTALLY ON THE SIGN.
- ALL MOUNTING BOLT HOLES SHALL BE USED WITH THE EXCEPTION OF THE 8 INDICATED OMITIONS TO PROVIDE CLEARANCE FOR THE SIGN POST.
- THE HINGE SHALL BE PLACED ON THE "ROAD CLOSED" SIDE OF THE OPEN SIGN.
- STAINLESS STEEL NUTS, BOLTS AND LOCK WASHERS (LOCK NUTS MAY ALSO BE USED) TO SECURE HINGE TO SIGN BLANK

**Flip Sign Example Sign Details**

WARNING SIGN FLIP SERIES

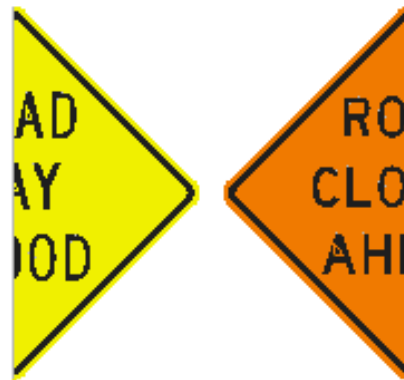
NORMAL MESSAGE

FLIPPED MESSAGE



48X48 FULL BLANK

$\frac{1}{2}$  - 48X48 BLANK FRONT/BACK



WARNING SIGN FLIP SERIES

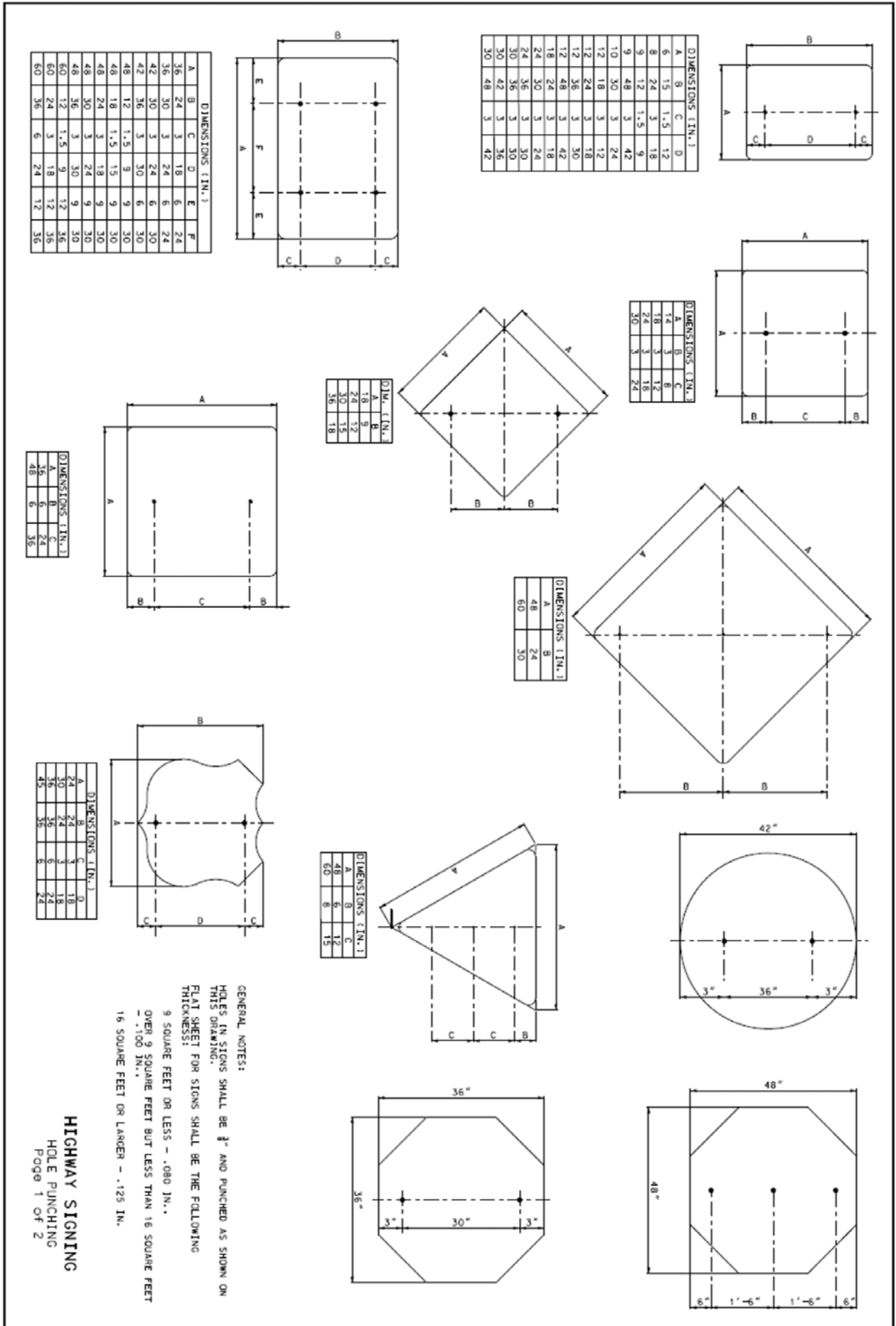
NORMAL MESSAGE

FLIPPED MESSAGE

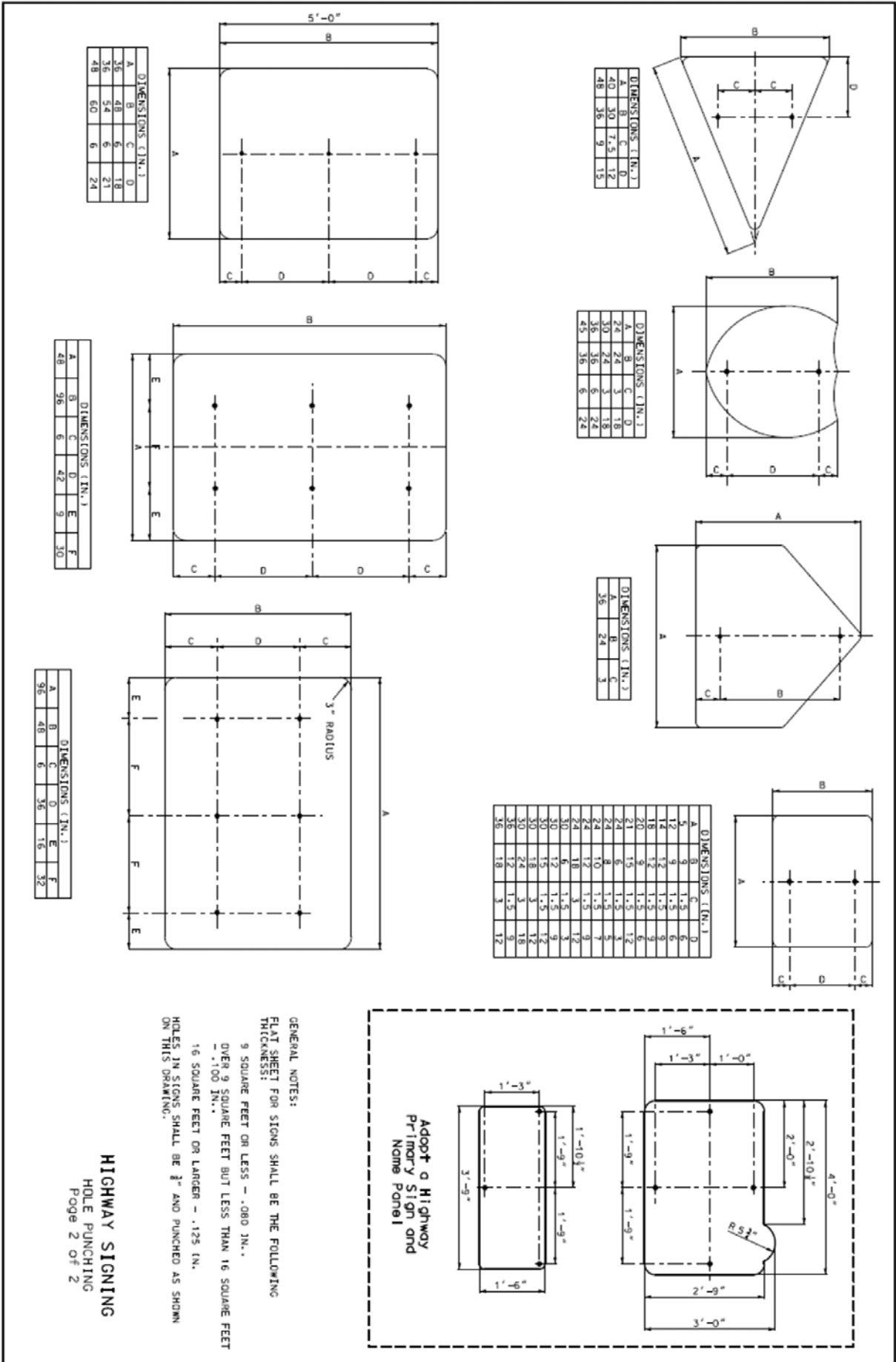


NOTE: SIGN DETAILS SHALL BE PROVIDED BY TRAFFIC AND HIGHWAY SAFETY DIVISION

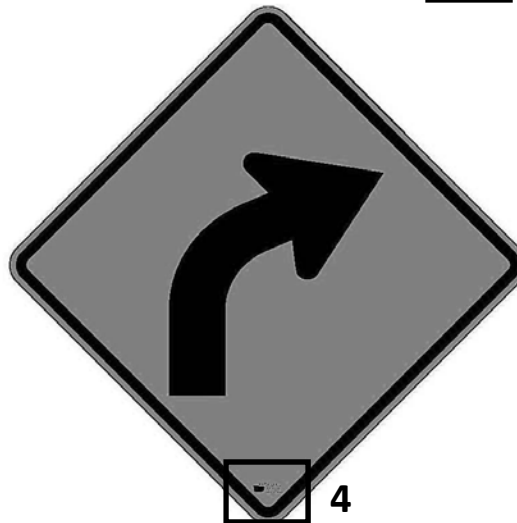
# Appendix 8a



# Appendix 8b



## MoDOT ID Label Locations



MoDOT ID Labels should be located at the bottom right corner of any rectangular signs or in the bottom corner of a diamond signs in close proximity to the sign boarder, avoiding bolt hole locations.



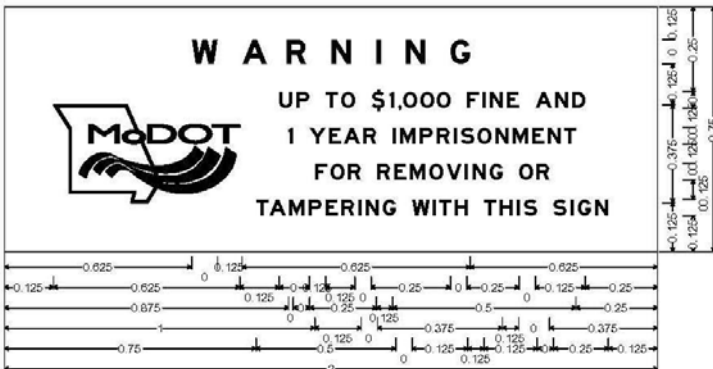
# MoDOT ID Label Details

MoDOT ID labels shall be printed on clear EC film with black ink. **DIGITAL PRINTING NOT PERMITTED.**

Labels may be incorporated into the silk screen detail and printed along with the sign face. If the label is applied in this manner the legend of the label shall match the color of the sign legend it is being applied to. The label shall not have any background color or boarder.

The smaller decal shall be used on all signs 9 sqft or smaller, if there is insufficient room to place the ID on the sign face without interfering with sign legend, then the ID decal will be placed on the back of the sign. Signs larger than 9 sqft will always have the ID on the sign face.

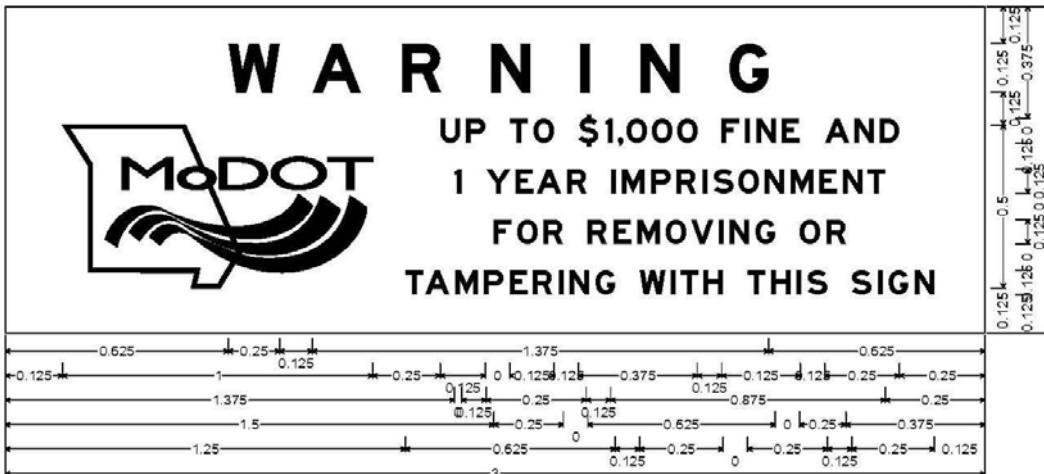
MoDOT will provide electronic detail of the



No border, White on White;  
 "W ARNING" Black E Mod 400% spacing; "UP TO \$1,000 FINE AND" Black E Mod;  
 "1 YEAR IMPRISONMENT" Black E Mod; "FOR REMOVING OR" Black E Mod,  
 "TAMPERING WITH THIS SIGN" Black E Mod.

Table of letter and object lefts.

|   |   |   |   |   |   |   |       |       |       |       |       |       |       |       |       |       |       |       |       |       |       |       |       |       |       |       |       |       |       |       |       |       |       |
|---|---|---|---|---|---|---|-------|-------|-------|-------|-------|-------|-------|-------|-------|-------|-------|-------|-------|-------|-------|-------|-------|-------|-------|-------|-------|-------|-------|-------|-------|-------|-------|
| W | A | R | N | I | N | G | 0.625 | 0.750 | 0.875 | 1.000 | 1.125 | 1.250 | 1.375 |       |       |       |       |       |       |       |       |       |       |       |       |       |       |       |       |       |       |       |       |
| U | P | T | O | S | I | O | O     | F     | I     | N     | E     | A     | N     | D     | 0.125 | 0.875 | 0.875 | 1.000 | 1.000 | 1.125 | 1.125 | 1.250 | 1.250 | 1.375 | 1.375 | 1.500 | 1.500 | 1.500 | 1.625 | 1.625 | 1.750 |       |       |
| I | Y | E | A | R | I | M | P     | R     | I     | S     | O     | N     | M     | E     | N     | T     | 0.875 | 0.875 | 1.000 | 1.000 | 1.125 | 1.250 | 1.250 | 1.250 | 1.375 | 1.375 | 1.375 | 1.500 | 1.500 | 1.600 | 1.625 | 1.625 | 1.750 |
| F | O | R | R | E | M | O | V     | I     | N     | G     | O     | R     |       | 1.000 | 1.000 | 1.000 | 1.125 | 1.250 | 1.250 | 1.250 | 1.375 | 1.375 | 1.500 | 1.625 | 1.625 |       |       |       |       |       |       |       |       |
| T | A | M | P | E | R | I | N     | G     | W     | I     | T     | H     | T     | H     | I     | S     | 0.750 | 0.750 | 0.875 | 0.875 | 1.000 | 1.000 | 1.125 | 1.125 | 1.125 | 1.250 | 1.250 | 1.375 | 1.375 | 1.500 | 1.500 | 1.625 | 1.625 |
| S | I | G | N |   |   |   |       |       |       |       |       |       |       |       |       |       | 1.625 | 1.750 | 1.750 | 1.750 |       |       |       |       |       |       |       |       |       |       |       |       |       |



No border, White on White;  
 "W ARNING" Black E Mod 400% spacing; "UP TO \$1,000 FINE AND" Black E Mod; "1 YEAR IMPRISONMENT" Black E Mod;  
 "FOR REMOVING OR" Black E Mod; "TAMPERING WITH THIS SIGN" Black E Mod;

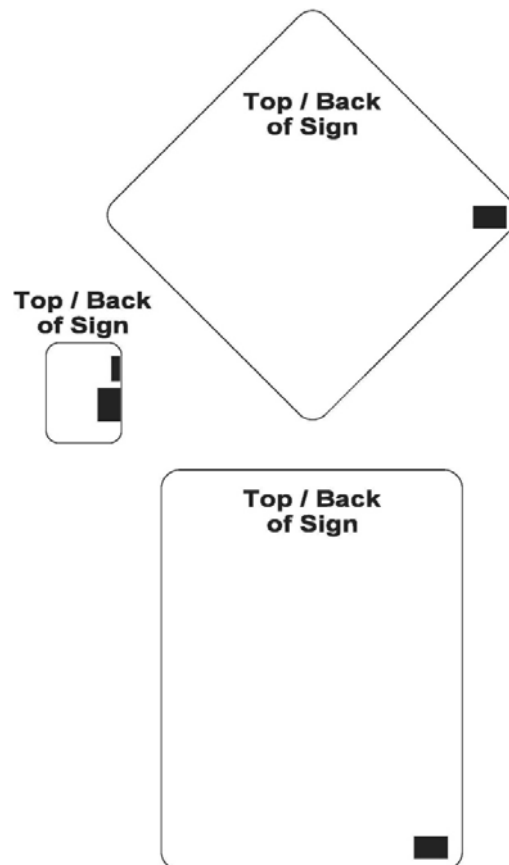
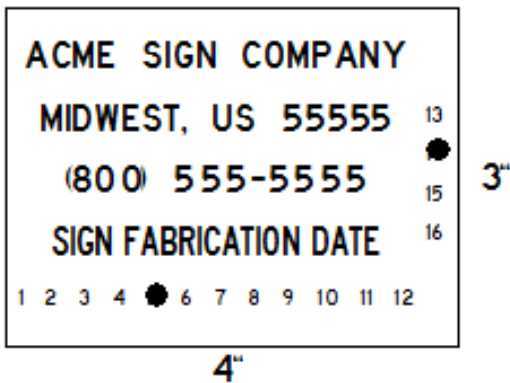
Table of letter and object lefts.

|   |   |   |   |   |   |   |       |       |       |       |       |       |       |       |       |       |       |       |       |       |       |       |       |       |       |       |       |       |       |       |       |       |       |       |       |       |
|---|---|---|---|---|---|---|-------|-------|-------|-------|-------|-------|-------|-------|-------|-------|-------|-------|-------|-------|-------|-------|-------|-------|-------|-------|-------|-------|-------|-------|-------|-------|-------|-------|-------|-------|
| W | A | R | N | I | N | G | 0.625 | 1.000 | 1.250 | 1.500 | 1.750 | 2.000 | 2.250 |       |       |       |       |       |       |       |       |       |       |       |       |       |       |       |       |       |       |       |       |       |       |       |
| U | P | T | O | S | I | O | O     | F     | I     | N     | E     | A     | N     | D     | 0.125 | 1.375 | 1.375 | 1.500 | 1.625 | 1.750 | 1.875 | 1.875 | 2.000 | 2.000 | 2.250 | 2.250 | 2.375 | 2.500 | 2.625 | 2.625 |       |       |       |       |       |       |
| I | Y | E | A | R | I | M | P     | R     | I     | S     | O     | N     | M     | E     | N     | T     | 1.375 | 1.500 | 1.625 | 1.625 | 1.750 | 1.875 | 1.875 | 2.000 | 2.000 | 2.125 | 2.125 | 2.250 | 2.375 | 2.375 | 2.500 | 2.625 | 2.625 |       |       |       |
| F | O | R | R | E | M | O | V     | I     | N     | G     | O     | R     |       | 1.500 | 1.625 | 1.625 | 1.750 | 1.875 | 1.875 | 2.000 | 2.125 | 2.125 | 2.250 | 2.250 | 2.375 | 2.500 |       |       |       |       |       |       |       |       |       |       |
| T | A | M | P | E | R | I | N     | G     | W     | I     | T     | H     | T     | H     | I     | S     | 1.250 | 1.250 | 1.375 | 1.500 | 1.500 | 1.625 | 1.750 | 1.750 | 2.000 | 2.000 | 2.125 | 2.125 | 2.250 | 2.375 | 2.375 | 2.500 | 2.625 | 2.625 | 2.750 | 2.750 |

## Vendor ID Label Placement

The Vendor ID / Fabrication Date decal should be approximately 4" wide by 3" tall, contain the full name, city and state as well as the company contact phone number displayed as well as listing the fabrication date, all in a minimum of ¼" font. The vendor may choose to install two individual decals displaying the Vendor ID and a Fabrication Date; these should also be approximately 4" wide with total combined height being approximately 3". If individual decals are used, they shall be placed in close vertical proximity to each other so information is displayed similar to the one piece decal. These decals and all their legend shall be fabricated to last the life of the sign. The examples below are general guidance for decal layout, an option to printing the specific fabrication date would be to print the months off the year along one edge of the decal and a series of years along another and use a hole punch mark out the month and year the sign was fabricated. Colors are optional; however the legend shall be a contrasting color to the background to provide legibility. If a subcontractor fabricates the sign for the prime contractor, a decal shall be provided to indicate both the prime and subcontractors. LABEL SHALL NOT BE DIGITALLY PRINTED

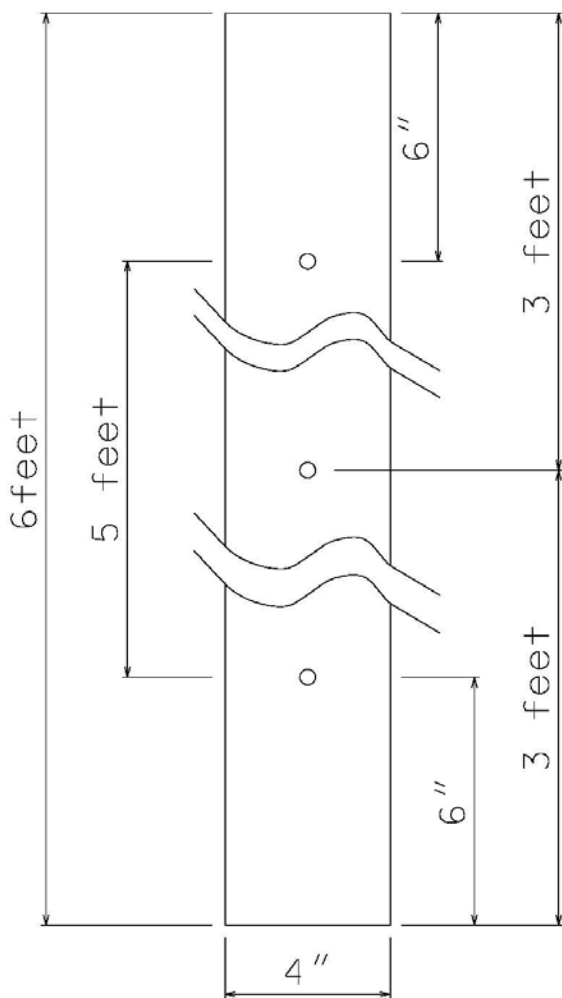
The Vendor ID / Fabrication Date decal shall be placed on the back of the sign in the lower right corner of a rectangle or right corner of a diamond so decal. Smaller signs, such as a R10-3b pedestrian push button sign, the decal can be placed along the right edge of the sign. The MoDOT ID Decal will also be placed on the back of these types of signs when the sign face has insufficient room to display the ID on the front of the sign. Typical ID / fabrication date decal locations shown below.



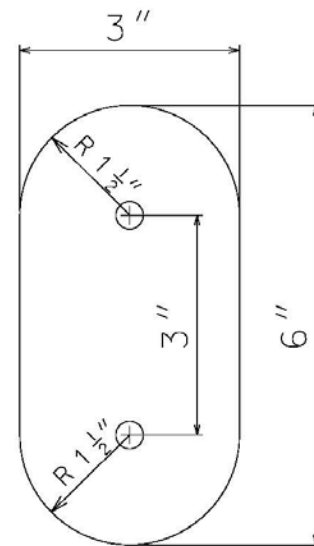
## Appendix 12

### Post Delineator and Channel Post Delineator Details

SIGN POST DELINEATOR



CHANNEL POST DELINEATOR



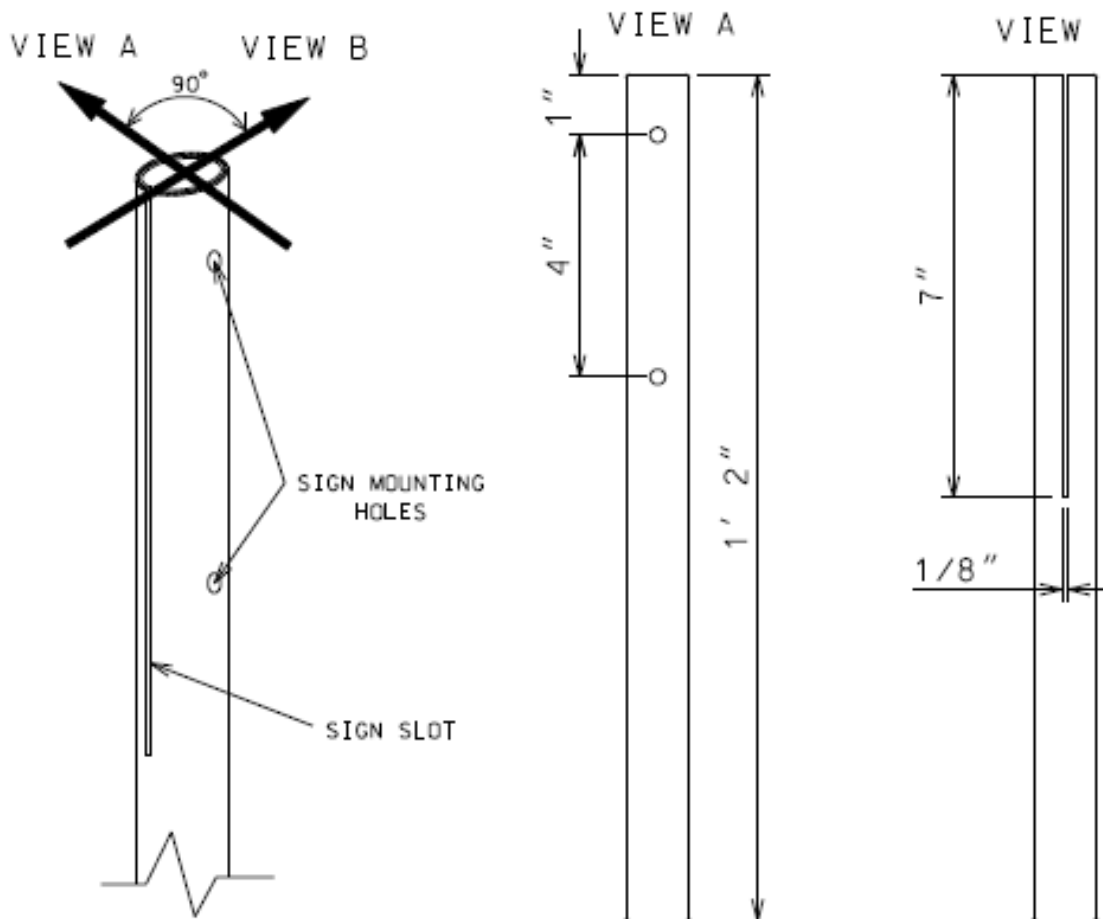
NOTES: BOTH DELINEATORS SHALL BE FABRICATED FROM 0.080" ALUMINUM.

BOTH DELINEATORS SHALL BE COVERED WITH ASTM TYPE IX OR XI SHEETING AS SPECIFIED.

BOLT HOLES IN BOTH DELINEATORS SHALL BE  $\frac{3}{8}$ " IN DIAMETER. SPACING DIMENSIONS ARE BASED ON CENTER OF HOLES.

## Appendix 13

# STOP/STOP-SLOW SIGN & HANDLE



NOTES: HANDLE SHALL BE FABRICATED FROM A 1" I.D. THIN WALL GALVANIZED CONDUIT PIPE, PIPE WALL THICKNESS APPROXIMATELY 0.057" THICK.

BOTH ENDS OF THE PIPE SHALL BE BEVELED OR ROUNDED TO ELIMINATE SHARP EDGES, ALL BURS ON ALL CUT EDGES SHALL BE REMOVED

SIGN MOUNTING HOLES SHALL BE 90 DEGREES FROM THE SIGN SLOT, SHALL BE  $\frac{1}{4}$ " IN DIAMETER AND SHALL GO THROUGH BOTH SIDES OF THE HANDLE

TWO 10-24 X 1 2/2" BOLTS WITH LOCKING NUTS SHALL BE SUPPLIED FOR EACH SIGN TO ATTACH THE HANDLE TO THE SIGN

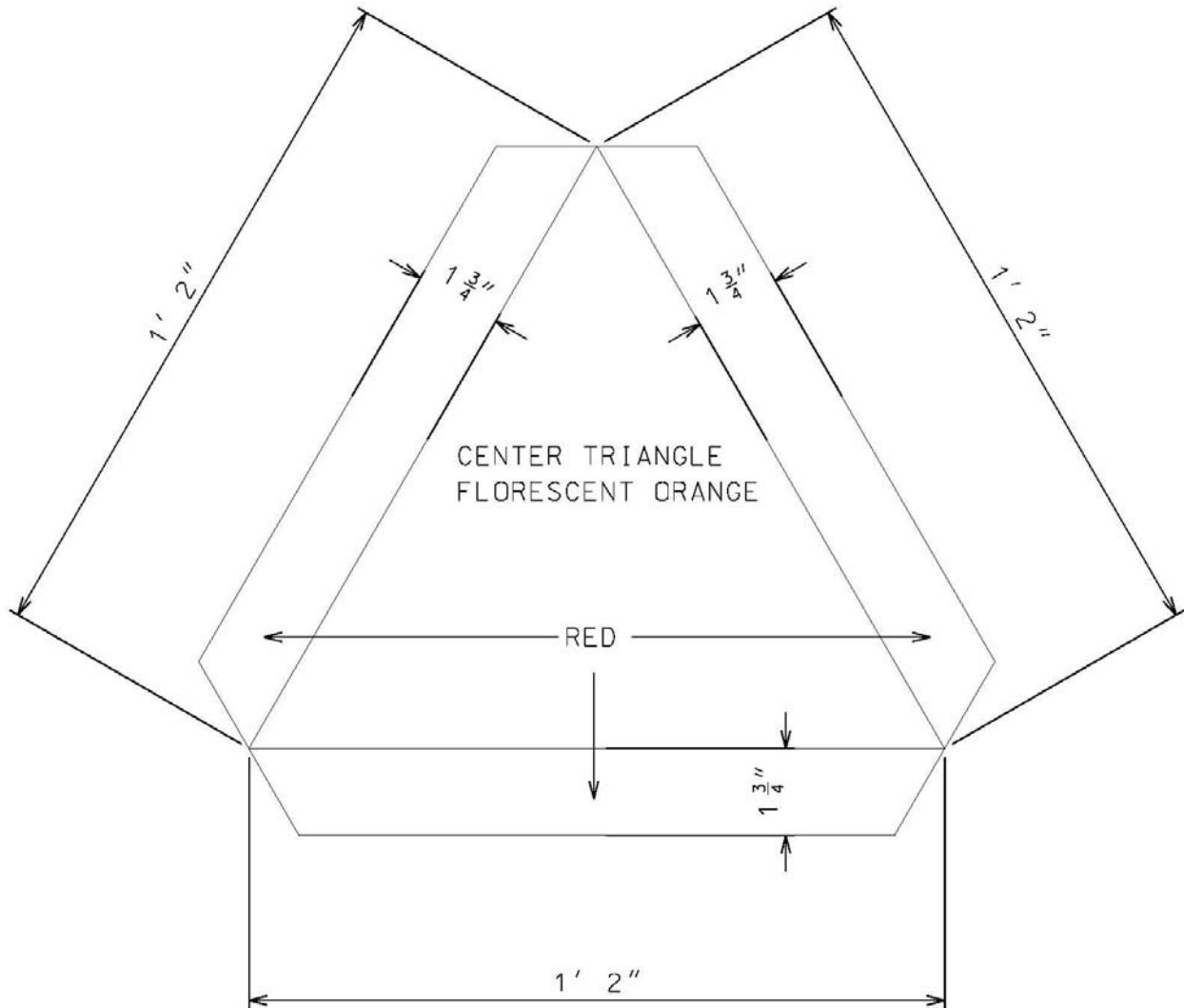
STOP / STOP AND STOP / SLOW SIGNS SHALL BE 18" X 18" AND BE FABRICATED USING 0.040" ALUMINUM MEETING MoDOT STANDARDS AND SPECIFICATIONS AND USING ASTM TYPE IV SHEETING. THE SIGN SHALL BE PRE-DRILLED TO MATCH THE HOLE SPACING OF THE HANDLE AND ACCEPT THE SUPPLIED HARDWARE TO FASTEN THE SIGN TO THE HANDLE.

STOP/STOP SIGNS WILL DISPLAY "STOP" ON BOTH SIDES OF THE SIGN AND THE STOP/SLOW SIGNS WILL DISPLAY "STOP" ON ONE SIDE AND "SLOW" ON THE OTHER IN ACCORDANCE WITH THE MUTCD STANDARD HIGHWAY SIGN MANUAL.

HANDLE AND SIGN SHALL BE SHIPPED UNASSEMBLED AND PACKAGED TO ASSURE NO DAMAGED OCCURS DURING SHIPPING. NUTS AND BOLTS SHALL BE PACKAGED TO ASSURE THE INDIVIDUAL PIECES ARE CONTAINED IN THE SHIPMENT.

Slow Moving Vehicle Sign Detail

SLOW MOVING VEHICLE SIGN



NOTES: THE DESIGN OF THE SLOW MOVING VEHICLE SIGN SHALL BE IN ACCORDANCE WITH THIS FIGURE IN ORDER TO COMPLY WITH MISSOURI STATE STATUTE SECTION 307.127

THE SIGN SHALL BE FABRICATED FROM 0.080 ALUMINUM MEETING MoDOT STANDARDS AND SPECIFICATIONS

THE RETROREFLECTIVE SHEETING SHALL MEET ASTM TYPE IV FOR THE RED AND ASTM TYPE IX OR XI FOR THE FLORESCENT ORANGE

# Appendix 15

## Guard Rail End Object Markers

Guard Rail End Object Markers shall be made from ASTM Type IX or XI florescent yellow sheeting with the black bars silk screened. These object markers will be made as decals, no substrate of any kind.

