



# Brush Bandit™ Chippers

Disc-Style, Drum-Style, Track & PTO Chippers



**Bandit**  
INDUSTRIES, INC.

**The year was 1983.** The very first Bandit chipper was built in a 6,000 square-foot converted repair shop, with the assistance of just six employees. That first machine was the Model 100 Brush Bandit—a 12-inch capacity, hand-fed disc-style chipper (shown here).

Today, Bandit's complete chipper line-up offers **17 different hand-fed chipper models** to choose from, each packing the reliability, durability, efficiency, and production that have made Bandit hand-fed chippers world famous. All Bandit chippers utilize welded construction with the highest grade materials available.

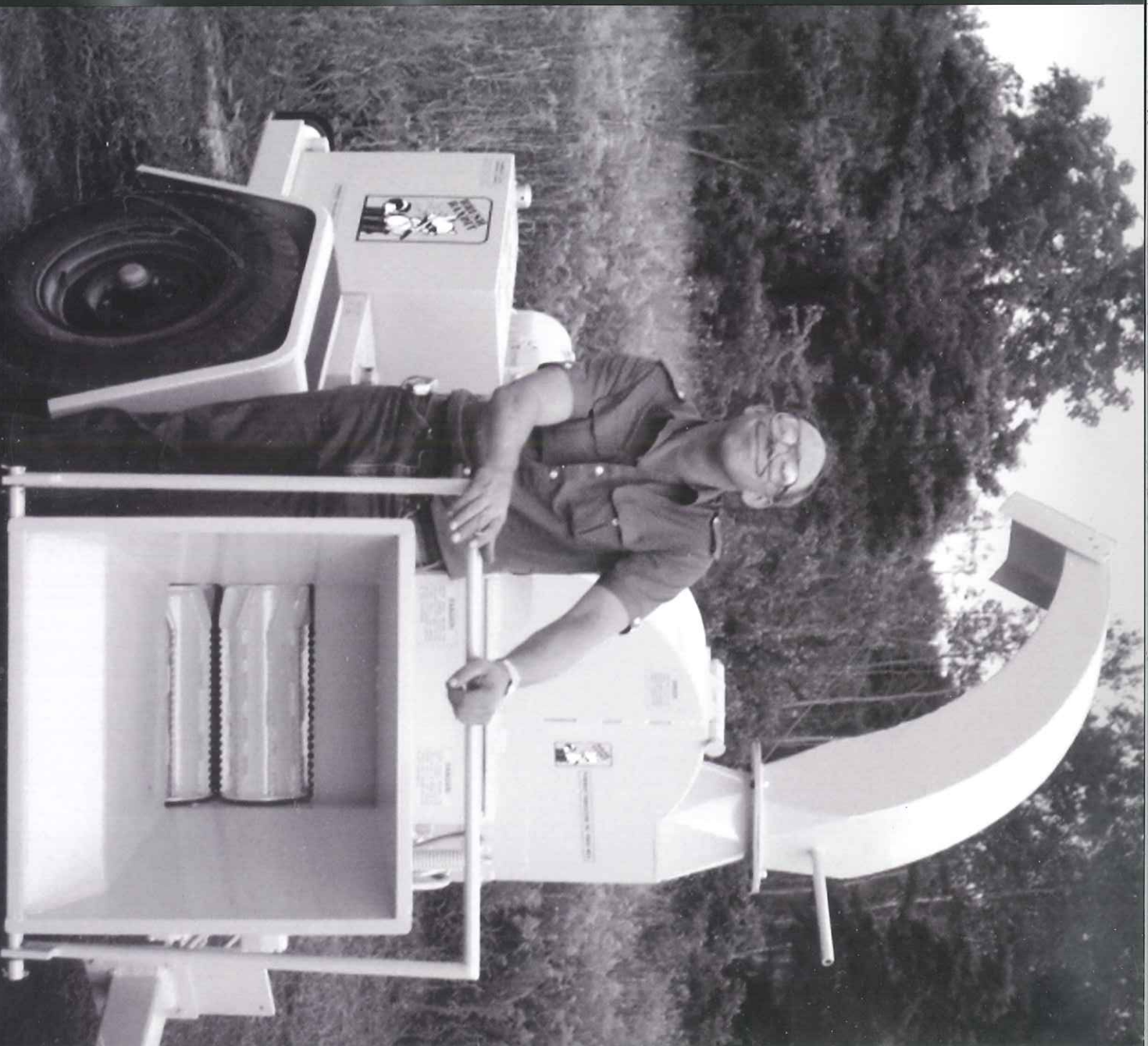
Bandit chippers feature powerful feed systems to crush and compress material. And when it comes to options, **nobody offers more personalization than Bandit.** It's easy to see why more than 50,000 Bandit machines have been sold in over 50 countries. And it's easy to understand why more professionals trust Bandit for their chipping needs.

**Join the Bandit family. Call your authorized Bandit dealer today!**



**Bandit**  
INDUSTRIES, INC.

6750 Millbrook Road • Remus, Michigan 49340  
www.banditchippers.com • sales@banditchippers.com  
P: 1-800-952-0178 • F: 1-989-561-2273



**Mike Morey, Sr.** Founder and co-owner of  
Bandit Industries, Inc. with his first Model 100 chipper.

# Thank you for your interest in Brush Bandit chippers.

**When you purchase a Bandit, you get far more than just the most durable and productive chippers on the market.** You get the support of more than 180 Bandit dealer locations all around the world. You get dedicated factory representatives who work with you to ensure your new purchase is everything you need, and more. Should a problem arise, you get specially-trained parts and service professionals who understand just how valuable your time is, working hard so you can get back to work. And when it comes time to sell or trade your Bandit, you'll find that Bandit chippers have higher resale than any other brand on the market. The best chippers. The best support. The best resale. That's the Bandit Experience.

**Which chipper is right for you?** Our chippers are built to perform in specific applications. You can learn more about which machine is right for your operation in the following sections.

## **DISC-STYLE CHIPPERS** PAGE 4-11

- Smoother operation with less vibration
- Creates a more uniform chip, and throws chips farther
- Uses less fuel
- Available in 6" - 18" diameter capacities

## **DRUM-STYLE CHIPPERS** PAGE 12-19

- Better for chipping large material, bigger infeed openings
- Collapses limby material easier
- Oversized drums chip smoother with better fuel efficiency
- Available in 12" - 21" diameter capacities

## **TRACK CHIPPERS** PAGE 20

- Self-propelled Caterpillar® steel- or rubber-track undercarriages
- Tethered remote, wireless remote, and loader options
- Available for ANY Bandit hand-fed chipper

## **BANDIT SPECIAL INTEREST CHIPPERS** PAGE 21

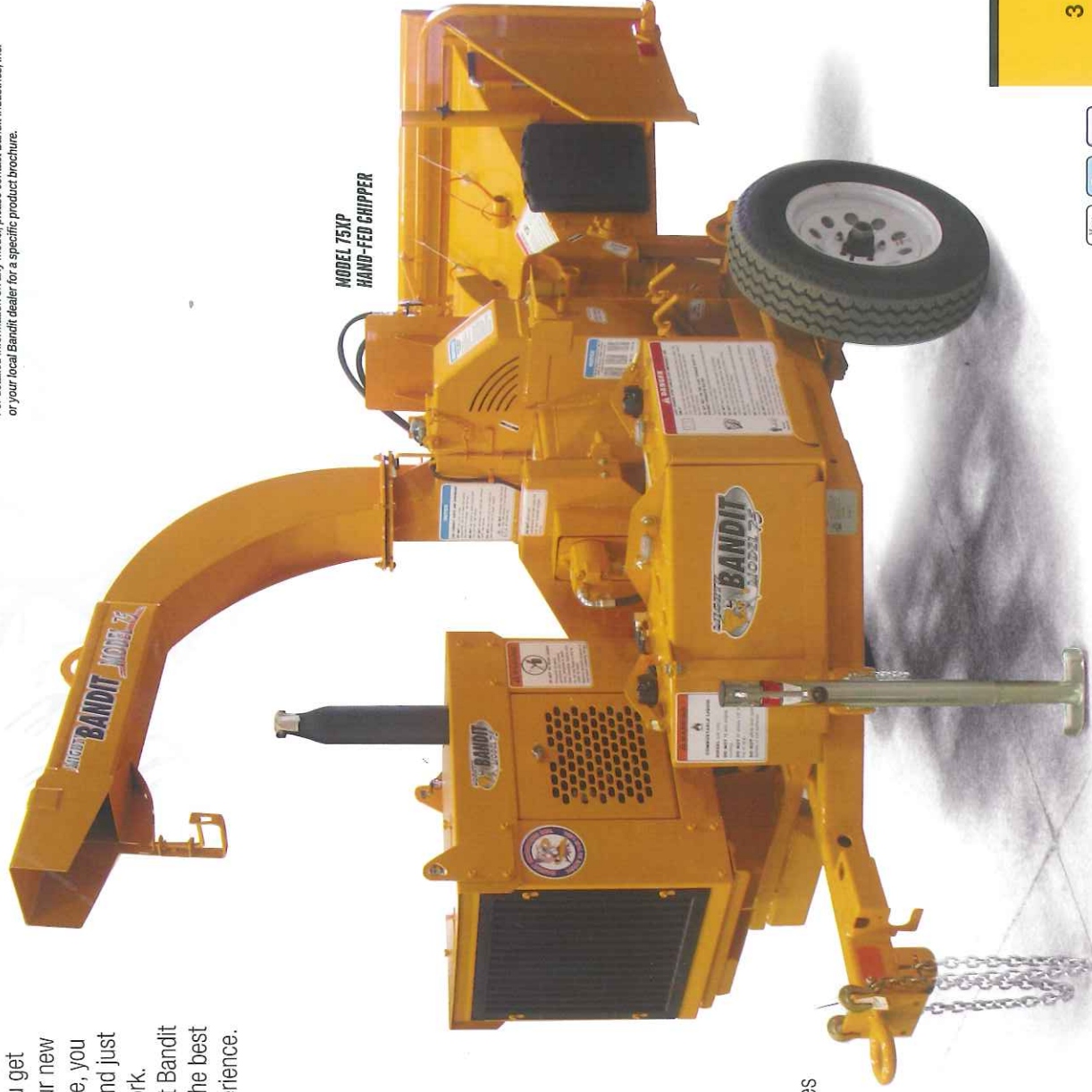
- Drop-feed chippers
- Conventional drum chippers
- PTO chippers
- Chipper/Chip box combo units

**TECH TIPS:**  
When browsing this brochure, you can scan the codes found on each page with your smart phone for an interactive bonus!

(YOU MAY NEED TO DOWNLOAD A QR CODE SCANNER FOR YOUR PHONE)



For detailed information on any model, please contact Bandit Industries, Inc. or your local Bandit dealer for a specific product brochure.



MODEL 75KP  
HAND-FED CHIPPER



# Disc-Style Chippers.

It all began with a Bandit disc-style chipper in 1983. Over the years, the design has been continually expanded and improved upon through research and development, but also through listening to the needs of professionals just like you.

**HIGH-VELOCITY CHIP DISCHARGE** Capped fan blades catch the material that comes through the disc and throws it at a tremendous velocity, ensuring that chip boxes are loaded to their maximum capacity.

**Five-Year  
"GUTS" Warranty  
ON NEW BANDIT CHIPPERS**  
Includes chipper disc or drum,  
engine, and slide bar feed  
system. Call for details!

**HORSEPOWER OPTIONS**  
Bandit chippers offer a wide range of engine options to accommodate operations of varying sizes.

**DURABLE CONSTRUCTION**  
Bandit chippers are better structurally supported than other chippers on the market. All steel components are welded together, rather than bolted, which reduces vibration and cracking.

**POWERFUL FEED SYSTEM**  
We offer large cubic-inch displacement hydraulic motors for exceptional pulling and crushing power.

**SLOPING INFEED HOPPER**  
All Bandit chippers feature sloping hoppers of 3° which makes for easier feeding and greater productivity.

**LARGE INFEED OPENINGS**  
Our chipper infeed hoppers allow forked material to be fed into the chipper, reducing chainsaw work and operator fatigue.

# WHY BUY A BANDIT DISC-STYLE CHIPPER?

When given the choice, more industry professionals choose Bandit. We've been manufacturing chippers for over 30 years, and there are currently over 50,000 chippers in operation worldwide. Bandit chippers are known for their reliability, efficiency, and durability. Our chippers boast some of the highest resale values on the market. For these reasons alone, it is easy to see why more industry professionals trust the Bandit name.

## DEPENDABILITY BORN FROM THREE DECADES OF CHIPPER EVOLUTION

- Chipper housings are **solidly built** with welded construction
- Disc-style chippers are equipped with **over-sized** chipper shafts and bearings

## POWERFUL FEED SYSTEMS

- Bandit has the **best feed systems** in the business
- Patented Slide Box Feed System that is positioned within inches of the chipper knives continually amazes people with its ability to pull, compress, and crush material that would otherwise need to be trimmed
- Applies **direct down pressure** for maximum pulling and compressing power
- Dual feed wheels reduce drag while increasing the feed rate
- Eliminates the need for saw work prior to chipping

## EACH CHIPPER IS UNIQUE.

- Customization options cater to your individual needs
- We do not manufacture "cookie cutter" machines
- Assembly teams maintain high level of quality control during construction
- **Custom-order** a machine with features and options that best fit your needs and your budget

## STANDARD & CUSTOM PAINT COLORS AVAILABLE.

Bandit chippers and grinders are available in a wide variety of standard colors at no additional charge (below), and also available in a full spectrum of custom colors.



DURABLE, LONG-LASTING CHIPPER DISC!



LARGER INFEED OPENING - DIVIDERS ALL COMPETITIVE MODELS!

## EFFICIENCY AND PRODUCTIVITY

- Medium and large capacity disc-style chippers cut the wood at a 45° angle for **excellent chip quality**
- Smaller disc-style chippers cut at a 90° angle for better processing of small-diameter trimmings and fibrous material
- **Knives** are set at a precise angle to the feed wheels, so they pull wood into the chipper while limiting or eliminating kickback
- **Smoother chipping** with very little vibration
- Less stress on the machine with lower fuel consumption
- Significantly **reduces downtime** and operating costs
- **Synchronized Feed System** on each chipper



MODEL 90XP DISC-STYLE CHIPPER

# Small footprint. Big impact.

At Bandit Industries, there's no such thing as "entry level." Our smallest disc-style chippers are given the same attention to detail and pack the same heavy-duty construction as their bigger brothers. They can be outfitted with many of the same options, they carry the same warranties and factory support, and because their chipper discs are mounted at a 90-degree cutting angle, they're especially adept at chipping small, stringy material like pine boughs and palm fronds. These machines also feature wide rectangular throat openings, giving them greater chipping capacity and superior performance compared to everything else in this segment.



WATCH IT RUN!

# 6"-9" Capacity Disc-Style Chippers

## Capable and dependable for a number of applications.

These rugged, compact, hydraulic-feed disc-style chippers are the primary units for many tree and landscape contractors, and make great rental machines! Ideal for the everyday rental user, the light tree removal contractor, and the medium-capacity landscape contractor looking for a light-weight, high production brush chipper.

### MODEL 65XP

- Easily converts brush, tree limbs and prunings into **dimensional chips**
- **Lightweight**, durable and easily affordable 6" capacity unit
- A fixture in the light tree care & rental markets for 20 years

### MODEL 75XP

- Features bearings mounted on the back side of the disc, allowing the feed system to be positioned extremely close to the cutting edge
- Impressive 12" wide throat opening
- Variety of **engine options** make it ideal for rental companies

### MODEL 90XP

- Chips like the larger machines with a 45° cutting angle
- 9" x 17" rectangular throat opening, bringing larger production characteristics to a smaller package
- Delivers years of **dependable performance**

### MODEL 95XP

- **Feed system** is positioned very close to the chipper disc
- Specializes chipping fibrous material such as vines and palm fronds
- Especially popular in coastal areas where such stringy materials are common



MODEL 65XP



MODEL 75XP

## QUICK COMPARISON

	STANDARD	METRIC	STANDARD	METRIC
<b>CAPACITY:</b>	6"	15.24 cm	7"	17.78 cm
<b>OPENING:</b>	6" x 12"	15.24 cm x 30.5 cm	7" x 12"	17.8 cm x 30.5 cm
<b>ENGINE:</b>	27-44.2 hp	20.1-33 kW	27-44.2 hp	20.1-33 kW
<b>LENGTH (CLOSED):</b>	125"	317 cm	125"	317 cm
<b>LENGTH (OPEN):</b>	155"	393.7 cm	155"	393.7 cm
<b>WIDTH:</b>	67"	170.18 cm	67"	170.18 cm
<b>HEIGHT:</b>	91"	231.14 cm	91"	231.14 cm
<b>WEIGHT:</b>	1,850 lbs.	841 kg	1,850 lbs.	841 kg
<b>FEED RATE:</b>	1.3 fps	.39 mps	80 fpm	7.2 mpm
<b>FUEL TANK:</b>	8 gallons	30 L	8 gallons	30 L
<b>HYDRAULIC TANK:</b>	7 gallons	26 L	7 gallons	26 L

	STANDARD	METRIC	STANDARD	METRIC
<b>CAPACITY:</b>	9"	22.86 cm	9"	22.8 cm
<b>OPENING:</b>	9.5" x 17"	24 cm x 43 cm	9" x 17"	22.8 cm x 43 cm
<b>ENGINE:</b>	48-84.5 hp	35.9-63 kW	48-84.5 hp	36-63 kW
<b>LENGTH (CLOSED):</b>	196"	497.8 cm	198"	502.92 cm
<b>LENGTH (OPEN):</b>	226"	574 cm	228"	579.12 cm
<b>WIDTH:</b>	70"	177.8 cm	72"	182.88 cm
<b>HEIGHT:</b>	98"	249 cm	98"	248.92 cm
<b>WEIGHT:</b>	4,400 lbs.	2,000 kg	4,400 lbs.	2,000 kg
<b>FEED RATE:</b>	1.5 fps	.457 mps	1.5 fps	.457 mps
<b>FUEL TANK:</b>	24.5 gallons	93 L	24.5 gallons	92.7 L
<b>HYDRAULIC TANK:</b>	7 gallons	26.5 L	7 gallons	26.5 L

\*Specifications may vary with engines and options selected. For additional information contact your local authorized dealer.



MODEL 90XP



MODEL 95XP

# Voted most popular in it's class.

Bandit's very first machine was a 12" capacity disc-style chipper—the Model 100. It evolved through the years to better accommodate the needs of chipping professionals, cementing Bandit as the premier manufacturer for high-production, high-quality chippers. **These machines are the 12" capacity disc-style chipper that all others are compared to!** It's not uncommon to see one of these machines still working on the front lines after 15 or even 20 years, still out-producing much newer machines from the competition.



WATCH IT RUN!

# 12" Capacity Disc-Style Chippers

Brush Bandit™ is the industry standard.

Many tree care professionals choose 12" capacity chippers as their primary on-site chipping machine. With three models to choose from, Bandit's famous line of 12" chippers have become the standard in the tree care industry. These proven, dependable, user-friendly chippers are well known for their ability to efficiently process limby materials, logs, and trees up to their full capacity.

## MODEL 150XP

- Economical and compact
- Features a **14" x 17"** chipper opening
- **90 FPM** chipping feed speed
- Excellent primary on-site chipping machine
- **Reduces cost** of tree and brush removal

## MODEL 200XP

- Built like the 150XP, but has a **faster chipping speed** (120 FPM)
- The **most popular** chipper of utility line maintenance contractors
- Quickly disposes of brush and handles larger stems and branches
- Available with **engine options** from all of the major engine suppliers

## MODEL 250XP

- **Most popular** chipper of the commercial tree contractor
- Features a wide **12-1/2" x 19"** opening and a 120 FPM feed speed
- **Most productive** chipper available in this size range
- 40 gallon steel fuel tank provides more than a day's fuel supply



MODEL 200XP



MODEL 250XP

## QUICK COMPARISON

	MODEL 150XP		MODEL 200XP		MODEL 250XP	
	STANDARD	METRIC	STANDARD	METRIC	STANDARD	METRIC
<b>CAPACITY:</b>	12"	30.48 cm	12"	30.48 cm	12"	30.48 cm
<b>OPENING:</b>	14" x 17"	36 x 43 cm	14" x 17"	36 x 43 cm	12.5" x 19"	31.5 x 48 cm
<b>ENGINE:</b>	66.8 - 142 hp	49.8 - 106 kW	66.8 - 142 hp	49.8 - 106 kW	66.8 - 142 hp	49.8 - 106 kW
<b>LENGTH (CLOSED):</b>	202"	513 cm	202"	513 cm	210"	533 cm
<b>LENGTH (OPEN):</b>	220"	513.08 cm	220"	513.08 cm	240"	609.6 cm
<b>WIDTH:</b>	70"	177.8 cm	70"	177.8 cm	83"	210.8 cm
<b>HEIGHT:</b>	98"	248.92 cm	98"	248.92 cm	98"	248.92 cm
<b>WEIGHT:</b>	5,800 lbs.	2,636 kg	5,800 lbs.	2,636 kg	6,500 lbs.	2,954.5 kg
<b>FEED RATE:</b>	1.5 fps	.457 mps	2.0 fps	.6096 mps	2.0 fps	.6096 mps
<b>FUEL TANK:</b>	29 gallons	109.7 L	29 gallons	109.7 L	40 gallons	151 L
<b>HYDRAULIC TANK:</b>	12 gallons	45.4 L	12 gallons	45.4 L	13 gallons	49.2 L

\*Specifications may vary with engines and options selected. For additional information contact your local authorized dealer.



MODEL 150XP  
DISC-STYLE CHIPPER

# Big production, low maintenance. Now that's a Bandit.

Though technically classified as hand-fed chippers, many times these high-capacity Bandit disc-style chippers are fed with a loader to realize their full potential. That kind of capability usually requires a much larger machine pulled by a semi-truck, but these overreaching chippers still ride comfortably behind a typical chip van or pickup. They are extremely versatile, allowing tree service or land clearing professionals to take on projects both large and small.



WATCH IT RUN!

# 15"-18" Capacity Disc-Style Chippers

The most versatile hand-fed disc chippers on the market.

## QUALITY. PRODUCTIVITY. RELIABILITY.

Towable by pickup trucks yet capable of processing big limbs and whole trees, our 15" and 18" capacity disc-style chippers combine versatility, efficiency, chip quality, longevity, and high production better than any other disc-style chipper on the market. If your jobs include everything from light brush to medium-sized whole trees, these chippers can accommodate your needs.

### MODEL 255XP

- This **dependable workhorse** has a 15.5" x 25" chipper opening
- Feed larger pieces into the chipper with the **loader option**
- Available with **engine options** up to 215-horsepower

### MODEL 280XP

- **Powerful feed system** capable of pulling whole trees into the chipper
- A favorite for full-tree take downs and light land clearing
- Excels at chipping large diameter material
- Often fed with an **optional knuckle boom loader** to achieve maximum production



MODEL 255XP



MODEL 280XP

## QUICK COMPARISON

	STANDARD	METRIC	STANDARD	METRIC
<b>CAPACITY:</b>	15"	38.1 cm	18"	45.7 cm
<b>OPENING:</b>	15.5" x 25"	39 x 63.5 cm	18" x 20.5"	45.7 x 52 cm
<b>ENGINE:</b>	97 - 215 hp	72 - 160.3 kW	114 - 260 hp	85 - 194 kW
<b>LENGTH (CLOSED):</b>	210"	533.4 cm	210"	533.4 cm
<b>LENGTH (OPEN):</b>	240"	609.6 cm	240"	609.6 cm
<b>WIDTH:</b>	85"	215.9 cm	95"	241 cm
<b>HEIGHT:</b>	102"	259 cm	102"	259 cm
<b>WEIGHT:</b>	7,700 lbs.	3500 kg	9,500 lbs.	4309.1 kg
<b>FEED RATE:</b>	2 f/s	.6096 mps	1.6 f/s	.4876 mps
<b>FUEL TANK:</b>	40 gallons	151.4 L	40 gallons	151.4 L
<b>HYDRAULIC TANK:</b>	13 gallons	49.2 L	30 gallons	113.6 L

\*Specifications may vary with engines and options selected. For additional information contact your local authorized dealer.



MODEL 255XP  
DISC-STYLE CHIPPER

# Drum-Style Chippers.

Drum-style chippers generally offer more crushing power than disc-style chippers. On average, drum-style chippers are more durable than disc-style machines, and they also tend to be more compact in design. By using oversized drums, Bandit chippers operate smoothly and more efficiently than the competition, without sacrificing power or durability.

## MORE CHIPS IN LESS TIME

Not only do our chippers throw harder, they are equipped with manual or mechanical swivel discharges, and can be raised and lowered to match the height of the chip vans, and pack each corner of the truck.

## LARGE DRUM DIAMETER

A larger diameter drum reduces the amount of energy used and lowers fuel consumption. Most material is cut in the bottom quadrant, with the grain of the wood rather than against it.

## SUPERIOR DRUM CONSTRUCTION

Our drums will last the lifetime of the chipper. Unique inner beffling and solid weld construction delivers a drum that is virtually indestructible.

## TOUGH TO PLUG THESE CHIPPERS

Our patented Power Slot is located within the discharge transition. This slot enhances airflow for maximum chip throwing power and virtually eliminates the chance for plugging.

## LARGE INFEED OPENINGS

Bring on your toughest materials: these chippers will handle them. Equipped with powerful feed systems and large infeed openings.

# WHY BUY A BANDIT DRUM-STYLE CHIPPER?

## ADVANTAGES OF A BANDIT DRUM-STYLE CHIPPER:

- Drum sits at a 90° angle to the feed wheels, (reducing the space between the feed system and cutting edge) for **enhanced** pulling and compressing power
- Larger diameter drums turn slower, creating **more rotational torque**
- **Larger drums** cut more with the grain of the wood for smoother chipping
- Patented Bandit **Power Slot** helps prevent plugging
- Larger throat openings allow more material to be processed at one time

## EASY TO OPERATE.

- **Sloping infeeds** reduce the effort needed to feed the chipper
- Reversing auto feed helps the operator control the feed system
- Use the feed wheel cylinder and a winch to make it **easier to feed** and process bigger, limber trees

## VIRTUALLY NO DOWN TIME.

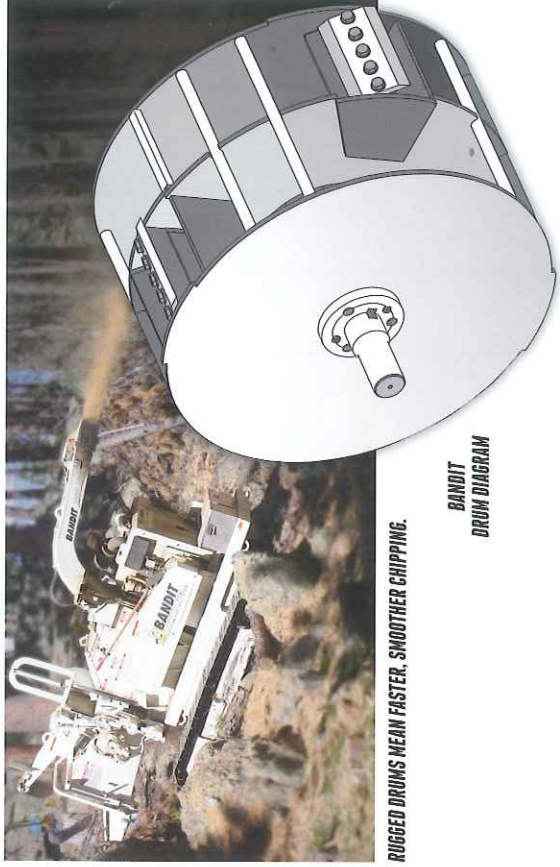
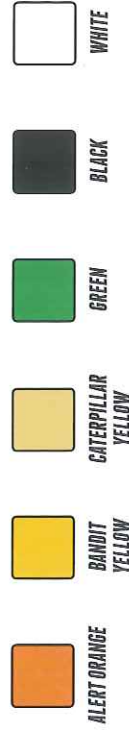
These tough, proven chippers will provide years of truly dependable service. In fact, many of our chippers are still in operation today after more than two decades! Rugged. Simple. Well-designed, and well-tested. *That's* a Bandit.

## GREAT BACK-UP SERVICE AND SUPPORT.

We are proud of our experienced, well-trained network of dealers, many of which have been with us for more than 20 years. Our parts and field service teams are equally experienced and trained, and they're ready to support the more than 50,000 Bandit machines in operation around the world.

## STANDARD & CUSTOM PAINT COLORS AVAILABLE.

Bandit chippers and grinders are available in a wide variety of standard colors at no additional charge (below), and also available in a full spectrum of custom colors.



RUGGED DRUMS MEAN FASTER, SMOOTHER CHIPPING.

BANDIT DRUM DIAGRAM

## RUGGED DRUMS – LOWER RPM, GREATER TORQUE, SMOOTHER CHIPPING.

- Bandit drum chippers use large, **oversized drums** with internal reinforcements
- **Drum shafts** are double the size found in many competing machines
- These drums will **NOT** come apart
- Chipper knives contact the wood at a greater angle to cut with the grain
- Produces a **better quality chip** while aiding in overall production, fuel efficiency, and machine longevity
- Engine doesn't have to run as fast to generate enough force for cutting

## THE BANDIT DRUM: SIZE MATTERS.

With the exception of the Model 990XP, all Bandit drum chippers use a 37" diameter drum. This is 15" larger than most other drum chippers on the market, and it's the key component to why Bandit drum chippers operate smoother with less vibration, chip better, achieve greater production with less horsepower, and use less fuel. Each Bandit drum (including the 990XP) is reinforced with industrial-grade steel to ensure your drum will offer years of dependable service, without breaking, cracking or failing under normal industry conditions.



# Build them tough. That's the Bandit way.

When you fire up your Bandit drum-style chipper, you're bringing life to a machine that was built not on an assembly line, but by teams of individuals using the best materials and latest technologies. Each drum is thoroughly reinforced with internal baffles and fitted with a shaft twice as thick as most other drum shafts. This is why Bandit can offer a **Five-Year GUTS Warranty** on the drum and all related components, because they're built for the long haul.



WATCH IT RUN!

# 12"-18" Capacity Drum-Style Chippers

## Compact and capable.

Bandit's powerful medium-capacity drum-style chippers are taking the industry by storm. The durability of a Bandit chipper meets the high production of a larger diameter drum in these medium-capacity machines.

### MODEL 990XP

- The **most compact** of Bandit's eight hydraulic feed drum-style chippers
- Features a large 13" x 17" **throat opening** to accept bulky material
- Specifically designed for municipalities, rental companies, and tree services looking for a **high-performance**, lightweight chipper

### MODEL 1390XP

- Uses a **highly-efficient** 37" diameter drum
- Drum is a full 15" larger in diameter than many competitive chippers
- Two powerful 7-1/2" diameter x 17" wide **horizontal feed wheels**
- Two 15.5 CID hydraulic motors pull whole trees into the chipper
- Available as a **heavy-duty Model 1390HD** with larger feed system

### MODEL 1390HD

- Two **horizontal feed wheels** allow this machine to aggressively pull and crush material
- **Engine options** from 97- to 142-horsepower
- Features a 17.75" x 19.5" **chipper opening**

### MODEL 1590XP

- Features a 37" diameter drum, rugged construction and durable components
- Unique **synchronized feed system** yields a uniform product
- Minimizes the amount of energy required to chip
- **Wide infeed opening** and powerful feed system
- Designed for large diameter chipping
- One of the **most powerful chippers** available on the market today



MODEL 990XP



MODEL 1390XP

## QUICK COMPARISON

	MODEL 990XP	METRIC	STANDARD	MODEL 1390XP	METRIC
CAPACITY:	12"	30.5 cm	13"	33.02 cm	
OPENING:	13" x 17"	39 cm x 43 cm	15.75" x 19.5"	39 cm x 43 cm	
ENGINE:	48 - 115 hp	35.8 - 86 kW	66.8 - 142 hp	50 - 106 kW	
LENGTH (CLOSED):	161"	408.9 cm	188"	457.2 cm	
WIDTH:	72"	182.9 cm	81"	180.3 cm	
HEIGHT:	96"	243.8 cm	110"	254 cm	
WEIGHT:	5,200 lbs.	2363.6 kg	7,290 lbs.	3306.7 kg	
FEED RATE:	115 FPM	.558 MPS	100 FPM	.508 MPS	
FUEL TANK:	24.5 gallons	93 L	24.5 gallons	93 L	
HYDRAULIC TANK:	12 gallons	45 L	12 gallons	45 L	

	MODEL 1390HD	METRIC	STANDARD	MODEL 1590XP	METRIC
CAPACITY:	15"	38.1 cm	18"	45.72 cm	
OPENING:	17.75" x 19.5"	45.1 cm x 50.2 cm	19.75" x 20.5"	50.2 cm x 52 cm	
ENGINE:	97 - 142 hp	73.8 - 106 kW	97 - 213 hp	73.8 - 158.9 kW	
LENGTH (CLOSED):	188"	477.52 cm	192"	487.7 cm	
LENGTH (OPEN):	218"	553.72 cm	222"	563.88 cm	
WIDTH:	81"	205.74 cm	90"	228.6 cm	
HEIGHT:	110"	279.4 cm	110"	279.4 cm	
WEIGHT:	7,500 lbs.	3402 kg	9,500 lbs.	4309.2 kg	
FEED RATE:	100 FPM	.508 MPS	100 FPM	.508 MPS	
FUEL TANK:	24.5 gallons	92.73 L	30 gallons	113.55 L	
HYDRAULIC TANK:	12 gallons	45.42 L	12 gallons	45.42 L	

\*Specifications may vary with engines and options selected. For additional information contact your local authorized dealer.



MODEL 1390HD



MODEL 1590XP

# Power & production.

When it comes to larger chipping projects, simply having a machine with big horsepower isn't enough. Productive drum-style chippers need a powerful feed system, not just to pull in material, but to crush and collapse it. The drum needs to be big and durable, with four knife pockets to make the most of the available power while promoting fuel economy. The drum housing and discharge chute need to be designed for maximum airflow to help prevent plugging, while also forcibly ejecting chips to pack vans and chip trucks. These are characteristics of all Bandit drum chippers, but the availability of powerful engines, built-in loaders and numerous special options make the Model 1890 a hugely capable machine for just about any size project.



WATCH IT RUN!

# 19" Capacity Drum-Style Chippers

Three unique styles.  
One great chipper.

Our beefy Model 1890 is available in three styles: standard, heavy-duty, and the 'Brute'. These aggressive chippers throw hard enough to fully load a 40' trailer. The 1890XP offers compact power and productivity, while the tandem-axle 1890HD gives you a more powerful feed system. The 1890 'Brute' gives you larger engine horsepower options on a compact single axle - weighing in under 10,000 lbs.

## MODEL 1890XP

- **Dependable** drum-style chipper
- Features a 20-1/2" x 26" **chipper opening**
- **Feed system** that is capable of pulling whole trees into the chipper

## MODEL 1890HD

- **Shows no fear** when presented with larger diameter materials
- Large pockets to catch the chips as they come off the knife
- **Power Slot** allows proper air flow through the discharge
- Virtually impossible to plug

## MODEL 1890 'BRUTE'

- Equipped with higher horsepower **engine options**
- Weighs less than 10,000 lbs. to accommodate local transportation restrictions
- **Most versatile** 19" capacity drum-style chipper available on the market
- Comes equipped with a single 12,000 pound **leaf-spring axle**



MODEL 1890XP ON RUGGED TRACK UNDERCARRIAGE



MODEL 1890 WITH LOADER

## QUICK COMPARISON

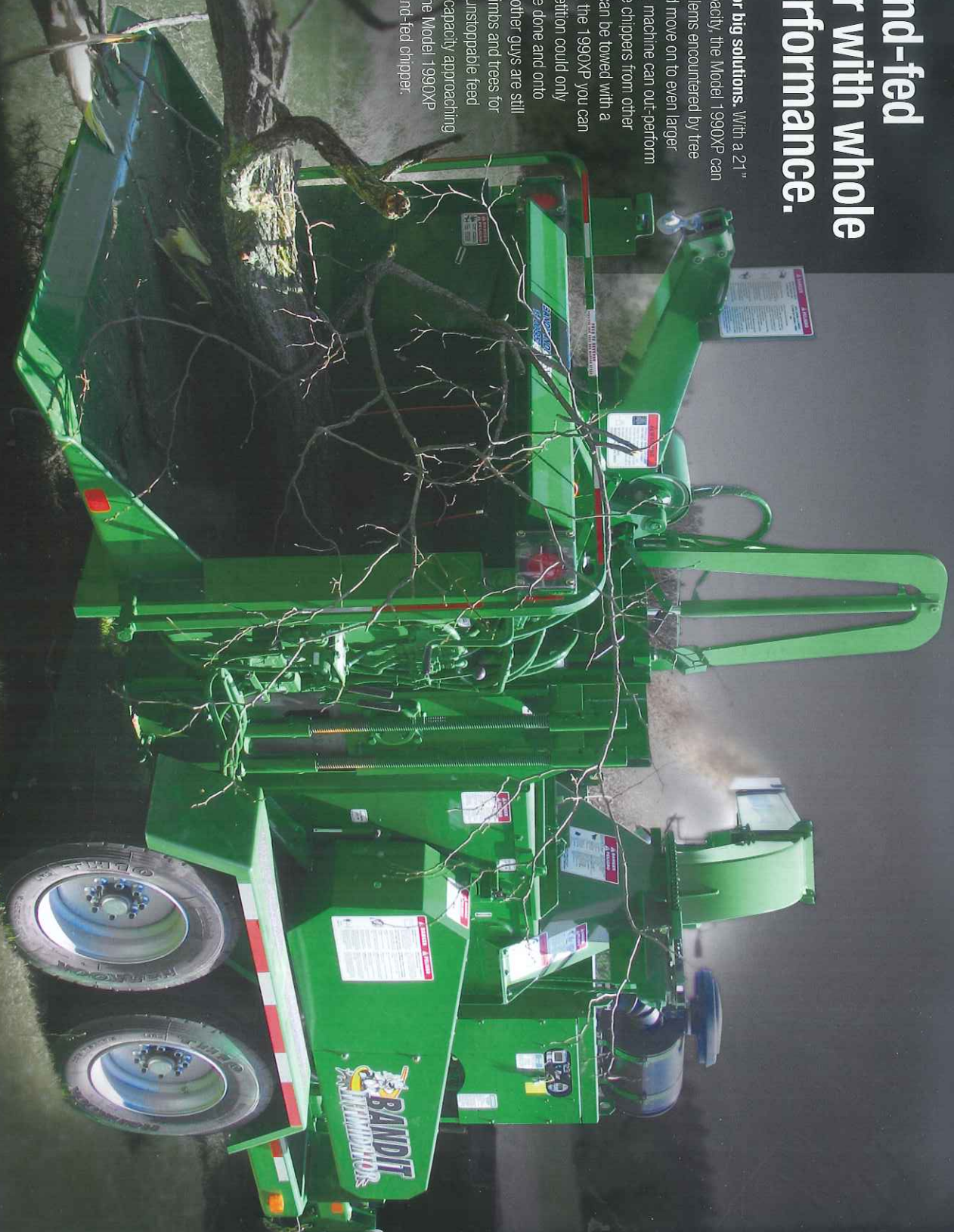
	MODEL 1890XP		MODEL 1890HD		MODEL 1890 'BRUTE'	
	STANDARD	METRIC	STANDARD	METRIC	STANDARD	METRIC
<b>CAPACITY:</b>	19"	48.3 cm	19"	48.3 cm	19"	48.3 cm
<b>OPENING:</b>	20.5" x 26"	52 x 66 cm	20.5" x 26"	52 x 66 cm	20.5" x 26"	52 x 66 cm
<b>ENGINE:</b>	110 - 215 hp	74 - 160 KW	142 - 275 hp	106 - 205 KW	160 - 213 hp	119 - 159 KW
<b>LENGTH (CLOSED):</b>	155"	393.7 cm	211"	535.94 cm	191"	485.1 cm
<b>WIDTH:</b>	95"	241.3 cm	95"	241.3 cm	95"	241.3 cm
<b>HEIGHT:</b>	111"	281.94 cm	111"	281.94 cm	111"	281.94 cm
<b>WEIGHT:</b>	10,200 lbs.	4626.7 kg	10,800 lbs.	4898.88 kg	9,800 lbs.	4445.28 kg
<b>FEED RATE:</b>	100 fpm	.508 mps	100 fpm	.508 mps	100 fpm	.508 mps
<b>FUEL TANK:</b>	40 gallons	151 L	40 gallons	151 L	40 gallons	151 L
<b>HYDRAULIC TANK:</b>	30 gallons	113.5 L	30 gallons	113.5 L	30 gallons	113.5 L



MODEL 1890 'BRUTE' DRUM-STYLE CHIPPER

# The hand-fed chipper with whole tree performance.

**Big problems call for big solutions.** With a 21" diameter chipping capacity, the Model 1990XP can solve the biggest problems encountered by tree care professionals and move on to even larger projects. This amazing machine can out-perform many small whole tree chippers from other manufacturers, yet it can be towed with a modest chip van. With the 1990XP you can accept jobs the competition could only dream of, and you'll be done and onto the next job while the other guys are still trying to cut up large limbs and trees for processing. From the unstoppable feed system to its massive capacity approaching two feet in diameter, the Model 1990XP truly is the ultimate hand-fed chipper.



WATCH IT RUN!

# 21" Capacity Drum-Style Chippers

## Bigger. Better. Bandit.

### THE MODEL 1990XP

- Features a massive 24.5" x 26" **chipper opening**
- **Easily pulls in** and processes large whole trees
- Wide infeed hopper accommodates large volumes of material
- Collapse and crush wide limbs and crotches, reducing chain saw work
- **Engine options** up to 325-horsepower
- Heavy-duty construction will ensure this machine keeps working hard for years to come

**JOIN THE CONVERSATION. FIND US ONLINE!**

Bandit is spreading the word about their products, the industry, and new developments into cyberspace. Bandit has made their presence known on social networking sites such as Facebook, Twitter, and YouTube.

*Visit us online today and see what all the buzz is about!*



MODEL 1990XP



MODEL 1990XP AVAILABLE WITH A RUGGED TRACK UNDERCARRIAGE

### QUICK COMPARISON

	STANDARD	MODEL 1990XP	METRIC
CAPACITY:	21"		53.3 cm
OPENING:	24.5" x 26"		62.2 x 66 cm
ENGINE:	180 - 325 hp		134 - 242.4 kW
LENGTH (CLOSED):	242"		614.7 cm
WIDTH:	91"		231.44 cm
HEIGHT:	122"		309.8 cm
WEIGHT:	11,720 lbs.		5327 kg
FEED RATE:	100 FPM		.508 MPS
FUEL TANK:	40 gallons		151 L
HYDRAULIC TANK:	30 gallons		113.5 L



MODEL 1990XP  
DRUM-STYLE CHIPPER

# Available Options

Bandit offers a wide variety of options, which allow you to customize your unit to fit your individual needs. All this allows you to custom order a machine with features and options that best fit your needs and your budget. Engine options from major engine manufacturers allow you to select the engine for your Bandit chipper that matches your equipment fleet. We believe our chippers will make you more money than any other chipper on the market. **Add on additional features and options for even more savings!**



**▶ MATCH YOUR FLEET!**  
Don't forget to ask about custom colors. These six are available at no additional cost.

## OUR MOST POPULAR OPTIONS



### ▶ LOADER ATTACHMENT (OPTION)

Loader options are a must for handling big wood and for high volume applications. Ease the task of feeding piles of brush. Available on both towable and track units.



### ▶ DISCHARGE SYSTEMS

Three systems available for easy chip placement: a hand-crank swivel discharge, hydraulic swivel discharge spout, and the height adjustable discharge.



### ▶ HYDRAULIC WINCH (OPTION)

The winch greatly reduces hand carrying of material while reducing the need to cut and trim. Great for dragging material from restricted areas not accessible to the chipper.



### ▶ SELF-PROPELLED TRACK UNDERCARRIAGE (OPTION) ▶

Take the chipper to the trees! All Bandit brush chippers can be equipped with self-propelled track undercarriages. Durable steel- or rubber-track CAT® tracks get your chipper on and off the job in record time. *Learn more in the side bar on the next page.*

### ▶ HEAVY-DUTY INFEED TRAY (OPTION)

This popular option helps direct material into the chipper (shown here at left)

### ▶ KNIFE SAVER (OPTION)

The Knife Saver is a unique and inexpensive hand-held knife sharpening device that easily touches up chipper knives while they are still in the machine.

### ▶ HYDRAULIC LIFT CYLINDER (OPTION)

To apply additional pressure on the top feed wheel to crush and compress limbs, select the hydraulic lift cylinder option (standard on the 280s and 1890s).

### ▶ REMOTE CONTROL (PATENTED, FOR WINCH OPTION, ABOVE)

This allows full control of the winch from a remote location.

### ▶ DEBRIS SCREEN (OPTION)

Liquid-cooled engines are equipped with corrugated radiator debris screens that provide a convenient means to clean debris from the machine.

### ▶ HYDRAULIC TONGUE JACK (OPTION)

Especially popular with larger models with heavier tongue weights.

### ▶ HYDRAULIC PRESSURE CHECK KIT (OPTION)

This option provides an easy way to check hydraulic pressures to make sure the hydraulic system is operating at the correct relief pressure.



WATCH IT RUN!

## WHAT CAN A TRACK CHIPPER DO FOR YOU?

- A SELF-PROPELLED BRUSH BANDIT CHIPPER MEANS:**
- Independent movement without being tied to a towing vehicle
  - Traverse difficult terrain to reach areas otherwise inaccessible
  - Maneuver into tight areas with Caterpillar® undercarriages
  - Quickly reach trees and brush piles

## GET IT TO GO.

### BANDIT'S SELF-PROPELLED UNDERCARRIAGE OPTION IS AVAILABLE ON ALL HYDRAULIC-FEED BRUSH CHIPPERS.

From the rolling mountains of Appalachia to the rocky outcrops in South Dakota's Black Hills, Bandit self-propelled track chippers go where no other chippers have gone before. Ideal for site clearance projects, forest fire prevention and forest thinning projects, the self-propelled undercarriage option eliminates the need to carry and forward trees and brush. Durable Caterpillar® rubber or steel-tracked undercarriages provide our self-propelled chippers with the power, clearance and stability for off-highway road work. An added benefit to track chippers is their ability to extend knife life by traveling to the clean wood for chipping, rather than skidding the wood through dirt and mud to a waiting chipper. Add a winch or optional loader to track chippers to significantly enhance the machine's ability to process whole trees. Track chippers come with a radio remote control and a tethered backup control for the ultimate convenience. **Get your next chipper to go: make it a Track Bandit™ and complete your next tree job or site clearance project ahead of schedule!**

## WANT TO SEE THESE OPTIONS IN ACTION?

CHECK US OUT ONLINE 24/7  
[WWW.YOUTUBE.COM/BANDITCHIPPERS](http://WWW.YOUTUBE.COM/BANDITCHIPPERS)



## SAFETY FEATURES

### LAST CHANCE CABLES (PATENTED, STANDARD)

These cables can be pulled to reverse the infeed rollers in case of an emergency. Available on all hydraulic powered chippers.

### OPERATOR SAFETY CONTROL BAR

This control bar wraps around three sides of the infeed chute and controls the direction of the feed wheels.

### CABLE/ROPE SHEAR DEVICE

This device is located inside the chipper base to shear or deflect either winch line or climbers' rope should either accidentally enter the rotating knives in the chipper.

### MECHANICAL SPRING LOCK PIN (PATENTED, STANDARD)

Prevents the disc's hood pin from being removed when the disc is turning. (The disc's hood won't open until the disc has come to a complete stop).

### FEED WHEEL ENGAGE (PATENTED, OPTIONAL)

Allows the operator to control the feedwheel operation by stepping on a foot pedal.

### GUARDS

These cover the hydraulic pump belt drive, chipper drive belts, feed wheel drive couplers and bearing retainer. They reduce the potential for injury by preventing the operator from getting caught in the moving parts.

### WOODEN PUSHER PADDLE

This device helps the operator feed small wood debris.

### SAFETY DECALS

Prominently displayed and available in multiple languages. Spanish/English combination now standard.

### HYDRAULIC BUMP BAR (OPTIONAL)

When force is applied to the bump bar, the feedwheels stop. The device functions mechanically, not electronically, through a linkage that diverts all the hydraulic power away from the feedwheels by either stopping the feedwheels completely or only allowing reverse to operate when activated. This feature goes above and beyond all ANSI and OSHA chipper safety requirements and is therefore an optional feature on Bandit chippers.

### CHIPPER HOOD PIN WITH PAD LOCK

Prevents unauthorized persons from accessing the disc or drum.

### PATENTED FOLD-DOWN INFEEED TRAY CUSHIONING SPRINGS

Reduces the effort required to raise and lower the infeed pan. Standard on larger, heavier Bandit chippers from Model 250XP on up.

### ELECTRONIC LIMIT SWITCH ON DISC & DRUM HOOD PIN LOCK OUT

Prevents engine from being started without the hood pin in place. Someone turning the key cannot inadvertently start the engine, disc or drum.

### MANUALS AND VIDEOS

Supplied with each unit (operations, service, parts).

### ERGONOMIC DESIGN:

- Low risk positions for any operator
- Low force, low stress operation
- No repetitive motion functions required for operation
- Easy to read gauges

# Also Available from Bandit...

## Unique chippers offer portability and supreme performance.



### PTO-DRIVE DISC-STYLE CHIPPERS

- Unique features that enhance performance
- Lowers your chipping costs
- The chipper is completely self-contained and offered for 540- or 1000-RPM tractor drives.
- Available as a 3-point hitch unit or a pull-behind trailerized unit



### DROP-FEED CHIPPERS

- Compact, economically priced unit
- Excellent means of disposing of limbs, branches, and other debris
- Extremely popular rental machines, especially for homeowners
- Available as a towable unit or PTO-trailerized for convenient chipping



### CONVENTIONAL DRUM CHIPPERS

- Cut knife changing time in half and make it easier to set the knife
- Easy to remove the shaft of the drum
- Removing the shaft from the rotor in the Quick-Change System is simple and can be easily completed without damaging the rotor.



### CHIPPER/CHIP BOX COMBO UNITS

- Eliminates the need for a chip box truck and related costs like insurance and license.
- Frees the towing vehicle for other uses
- Combo units available on 6" and 9" capacity chippers
- Chips from either side with a seven-position, quick-release turn table

**Call us today to customize the right chipper for your operation!**

### BANDIT MAKES PURCHASING REPLACEMENT PARTS EASY:

Purchase a model-specific **Wear Parts Starter Kit** with all new machines: the parts you need, at a **bundled price!**

**DID YOU JUST BUY A BANDIT?** Source your **Wear Parts Starter Kit** from your local Bandit dealer!

1-888-322-6348  
OR CALL YOUR  
LOCAL BANDIT  
DEALER!

**SAVE TIME AND MONEY:** Purchase your **Wear Parts Starter Kit** now!



ZENITH KNIFE HOTLINE: 1-888-322-6348



ZENITHCUTTER



ZENITHCHIPPERKNIVES



MODEL NUMBER	CHIPPER STYLE	DIAMETER CAPACITY	CHIPPER OPENING	ENGINE HORSEPOWER	TRANSPORT LENGTH	CHIPPER WIDTH	CHIPPER HEIGHT	WEIGHT (LBS.)	FEED RATE	FUEL TANK (GALLONS)	HYDRAULIC TANK (GAL.)	TRACK OPTION	LOADER OPTION
65XP	DISC	6"	6" x 12"	27 - 44.2	125"	67"	91"	1850	1.3 FPS	8	7	•	
90XP	DISC	9"	9.5" x 17"	48.1 - 84.5	196"	70"	98"	4400	1.5 FPS	24.5	7	•	
95XP	DISC	9"	9" x 17"	48.1 - 84.5	198"	72"	98"	4400	1.5 FPS	24.5	7	•	
150XP	DISC	12"	14" x 17"	66.8 - 142	202"	70"	98"	5800	1.5 FPS	29	12	•	
200XP	DISC	12"	14" x 17"	66.8 - 142	202"	70"	98"	5800	2.0 FPS	29	12	•	
250XP	DISC	12"	12.5" x 19"	66.8 - 142	210"	83"	98"	6500	2.0 FPS	40	13	•	
255XP	DISC	15"	15.5" x 25"	97 - 215	210"	85"	102"	7700	2.0 FPS	40	13	•	•
280XP	DISC	18"	18" x 20.5"	114 - 215	210"	95"	102"	9500	1.6 FPS	40	30	•	•
<b>DISC-STYLE BRUSH CHIPPERS</b>													
990XP	DRUM	12"	13" x 17"	48.1 - 115	161"	72"	96"	5200	2.1 FPS	24.5	12	•	
1390XP	DRUM	13"	15.75" x 19.5"	66.8 - 142	188"	81"	105"	7250	1.6 FPS	24.5	12	•	
1390HD	DRUM	15"	15.75" x 19.5"	66.8 - 142	188"	81"	105"	7500	1.6 FPS	24.5	12	•	
1590XP	DRUM	18"	19.8" x 20.5"	97 - 213	192"	87"	108"	9500	1.6 FPS	30	12	•	
1890	DRUM	19"	20.5" x 26"	114 - 215	191"	95"	111"	10200	1.6 FPS	40	30	•	
1890 BRUTE	DRUM	19"	20.5" x 26"	160 - 213	191"	95"	111"	9800	1.6 FPS	40	30	•	
1890HD	DRUM	19"	20.5" x 26"	142 - 275	211"	102"	126"	10800	1.6 FPS	40	30	•	•
1990XP	DRUM	21"	24.5" x 26"	180 - 325	242"	91"	122"	11720	1.6 FPS	40	30	•	•
<b>DRUM-STYLE CHIPPERS</b>													
1290	CONVENTIONAL DRUM CHIPPER	6"	10" x 12"	65 - 99 HP	151"	90"	96"	4400	N/A	24.5	N/A		
1690	CONVENTIONAL DRUM CHIPPER	6"	10" x 16"	65 - 99 HP	151"	90"	96"	4400	N/A	24.5	N/A		
490	DROP FEED CHIPPER	4"	7" x 15-1/2"	18 HP	74"	29"	52"	350	N/A	2	N/A		
<b>OTHER</b>													

All specifications, dimensions, standards and options are subject to change without notice. Dimensions and weights may vary, depending on options and engines selected. Bandit Industries, Inc. reserves the right to change designs, specifications and options without prior notice. All figures shown in technical data were current at the time of printing. However, these can change as a result of further product development. Please contact Bandit Industries, Inc. for more information.



**Bandit**  
INDUSTRIES, INC.

6750 Millbrook Road • Remus, Michigan 49340

[www.banditchippers.com](http://www.banditchippers.com) • [sales@banditchippers.com](mailto:sales@banditchippers.com)

P: 1-800-952-0178 • F: 1-989-561-2273



[WWW.YOUTUBE.COM/BANDITCHIPPERS](http://WWW.YOUTUBE.COM/BANDITCHIPPERS) • [WWW.TWITTER.COM/BANDITINDUSTRIES](http://WWW.TWITTER.COM/BANDITINDUSTRIES) • [WWW.FACEBOOK.COM/BANDITINDUSTRIES](http://WWW.FACEBOOK.COM/BANDITINDUSTRIES)

All specifications, dimensions, standards and options are subject to change without notice. Dimensions and weights may vary, depending on options and engines selected. Bandit Industries, Inc. reserves the right to change designs, specifications and options without prior notice. All figures shown in technical data were current at the time of printing. However, these can change as a result of further product development and regional distribution differences. Please contact your authorized Bandit dealer or Bandit Industries, Inc. for more information. Made in the USA. Printed in the USA. © 2012 Bandit Industries, Inc. All Rights Reserved.