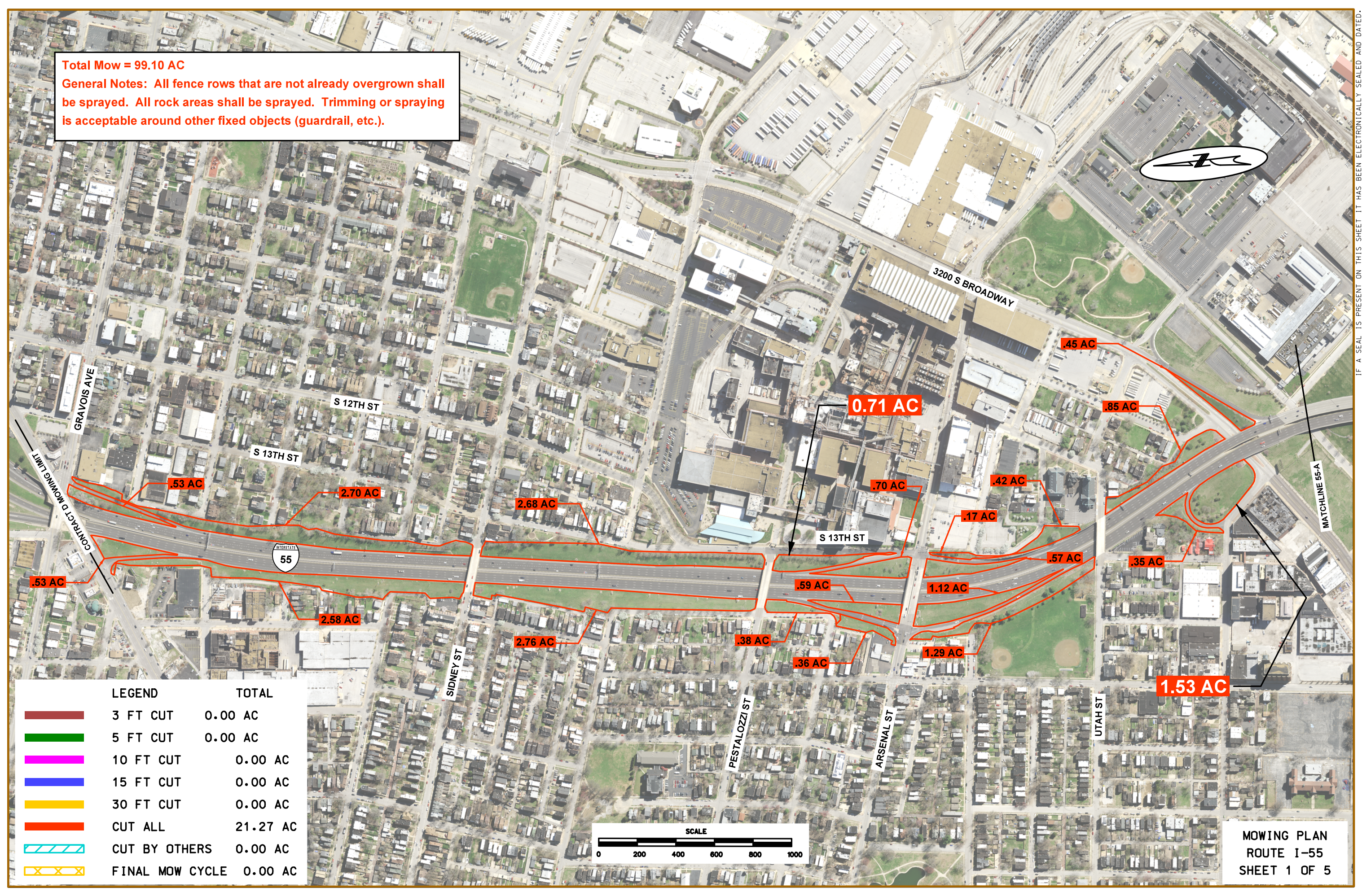


Total Mow = 99.10 AC

General Notes: All fence rows that are not already overgrown shall be sprayed. All rock areas shall be sprayed. Trimming or spraying is acceptable around other fixed objects (guardrail, etc.).



LEGEND		TOTAL
<div></div>	3 FT CUT	0.00 AC
<div></div>	5 FT CUT	0.00 AC
<div></div>	10 FT CUT	0.00 AC
<div></div>	15 FT CUT	0.00 AC
<div></div>	30 FT CUT	0.00 AC
<div></div>	CUT ALL	21.27 AC
<div></div>	CUT BY OTHERS	0.00 AC
<div></div>	FINAL MOW CYCLE	0.00 AC

