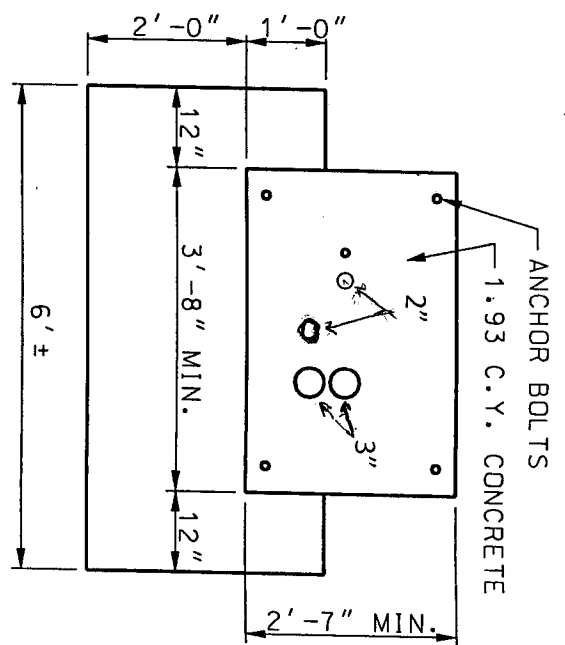
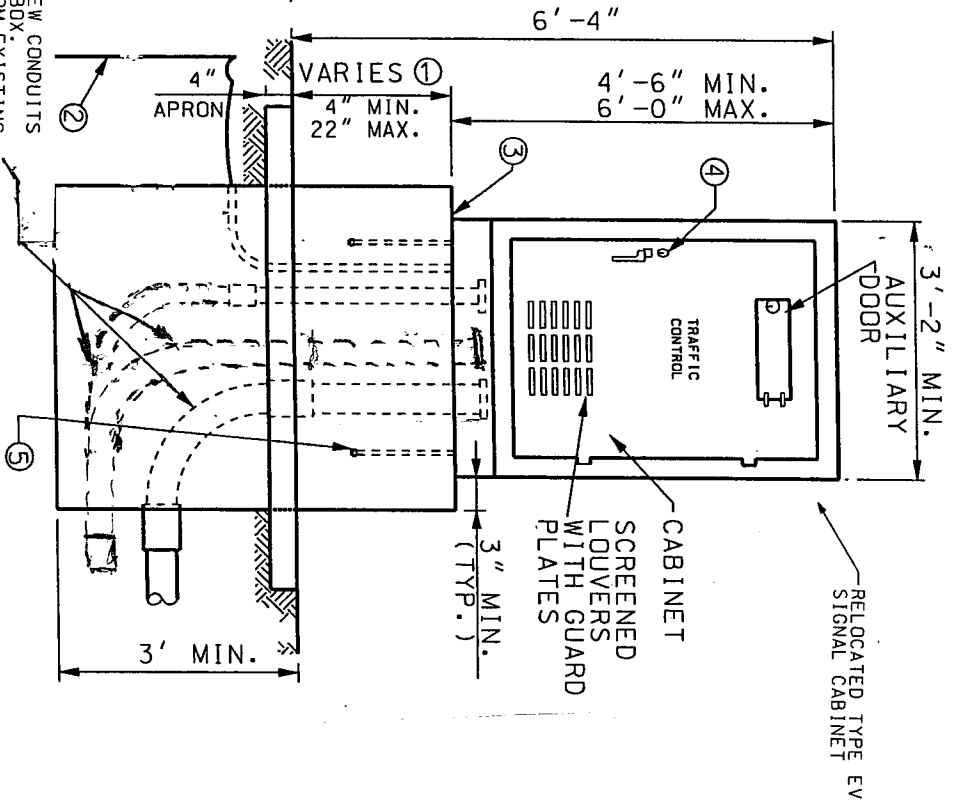


-DRILL AND INSTALL NEW CONDUITS INTO EXISTING PULL BOX. PULL BACK CABLES FROM EXISTING CONTROLLER LOCATION AND REROUTE TO NEW CABINET LOCATION.

FOR CONTROLLER CABINETS WITH HEIGHTS FROM 4'-4" TO 6'-0"

TYPE EV



PLAN VIEW

NOTES:

- ① DIMENSION VARIES ACCORDING TO CABINET HEIGHT.
- ② GROUND ROD, 3/4" DIA. x 8' MIN. IF SUBSURFACE CONDITIONS EXIST WHICH PROHIBIT THE PLACEMENT OF THE GROUND ROD IN A VERTICAL POSITION. THE ROD MAY BE DRIVEN AT AN OBLIQUE ANGLE NOT TO EXCEED 45 DEGREES FROM VERTICAL OR BURIED IN A TRENCH AT LEAST 30 IN. DEEP. CONNECTION TO GROUND ROD SHALL BE COWELDED.
- ③ LIFETIME SILICONE CAULK BETWEEN CABINET AND BASE.
- ④ #2 CORBIN LOCK
- ⑤ ANCHOR BOLTS (USE BOLT HEAD OR TACK WELDED NUT ON EMBEDDED END AND SIZE AS SPECIFIED BY CABINET MANUFACTURER).

CONTROLLER CABINETS AND BASE TYPES