



Lafayette St. Interchange Traffic Management Plan

Mike Dusenberg
Project Manager, Central District
MO Dept. of Transportation
July 1, 2014

ATC Process

- Base Design provided by MoDOT
- Minimize public impact by keeping regional and local traffic flowing efficiently and safely through the impacted area.
- ATC for Maintenance of Traffic including staging, traffic control and earthwork, drainage or temporary pavement related to staging
- MOT ATC - Equivalent or better

ATC Process

June 27, 2014	Preliminary Traffic Control Plans and Cross Sections posted to the MoDOT Plans room.
July 1, 2014	Informational Meeting to explain the ATC process.
July 7, 2014- July 18, 2014	Confidential one-on-one contractor meetings. Conceptual ATCs will be accepted for review.
4 business days after submittal	All Conceptual ATCs approved.
From approval of CATC to August 8, 2014	All Final ATCs will be accepted for review
4 business days after submittal	All Final ATCs approved.
From approval of Final ATC to September 5, 2014	Development of plans to biddable quantities.
September 12, 2014	ATC bid document available to contractor.
September 19, 2014	Bids due.

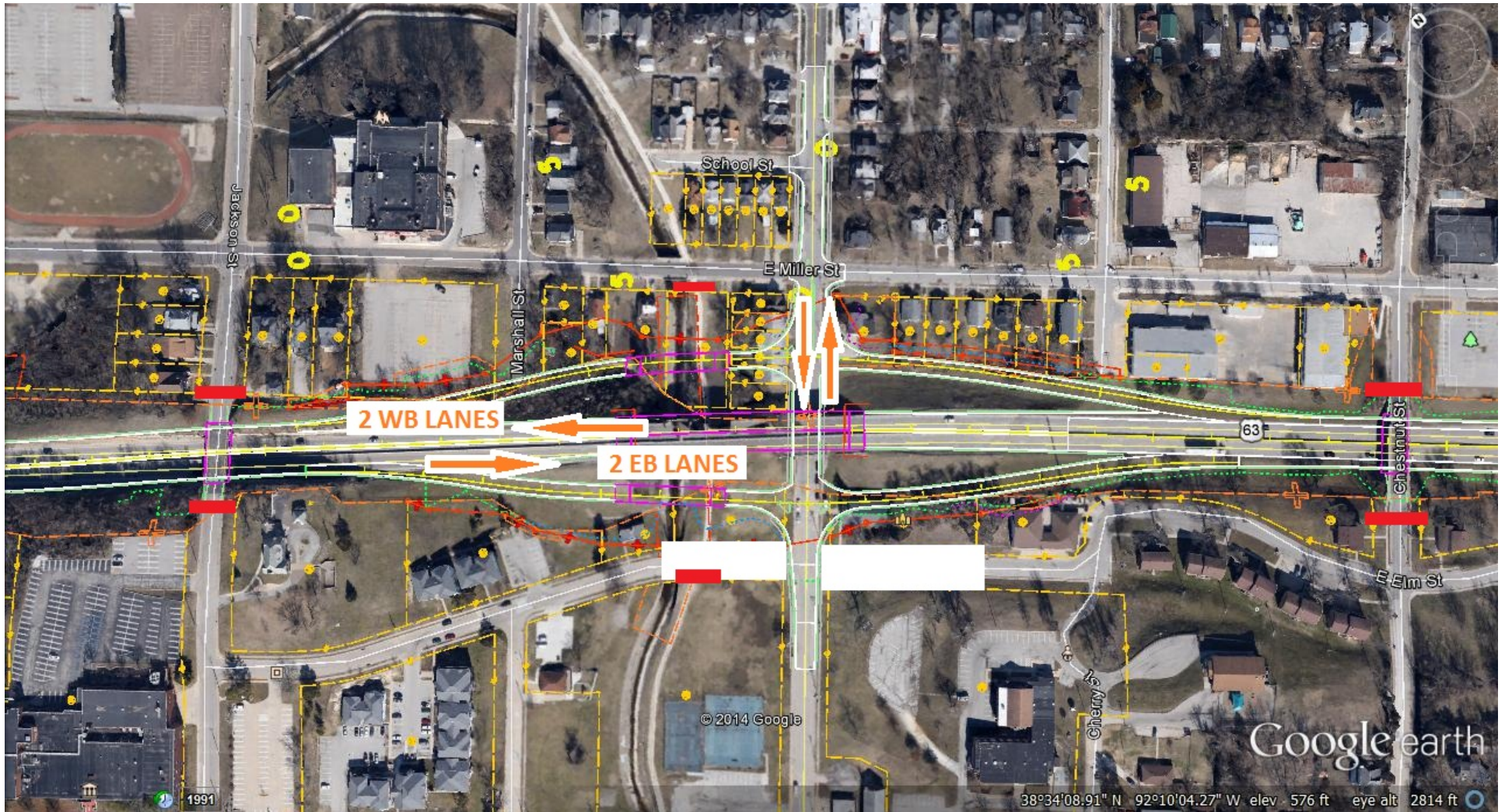
ATC Process

- ATC Guidelines – minimum requirements see page 5
- Confidentiality
- Minimum net savings \$100,000 per ATC
- Contractor and MoDOT develop CATC to biddable design
- Contractor has choice of bidding base plans or their own ATC plans

Lafayette St. Interchange

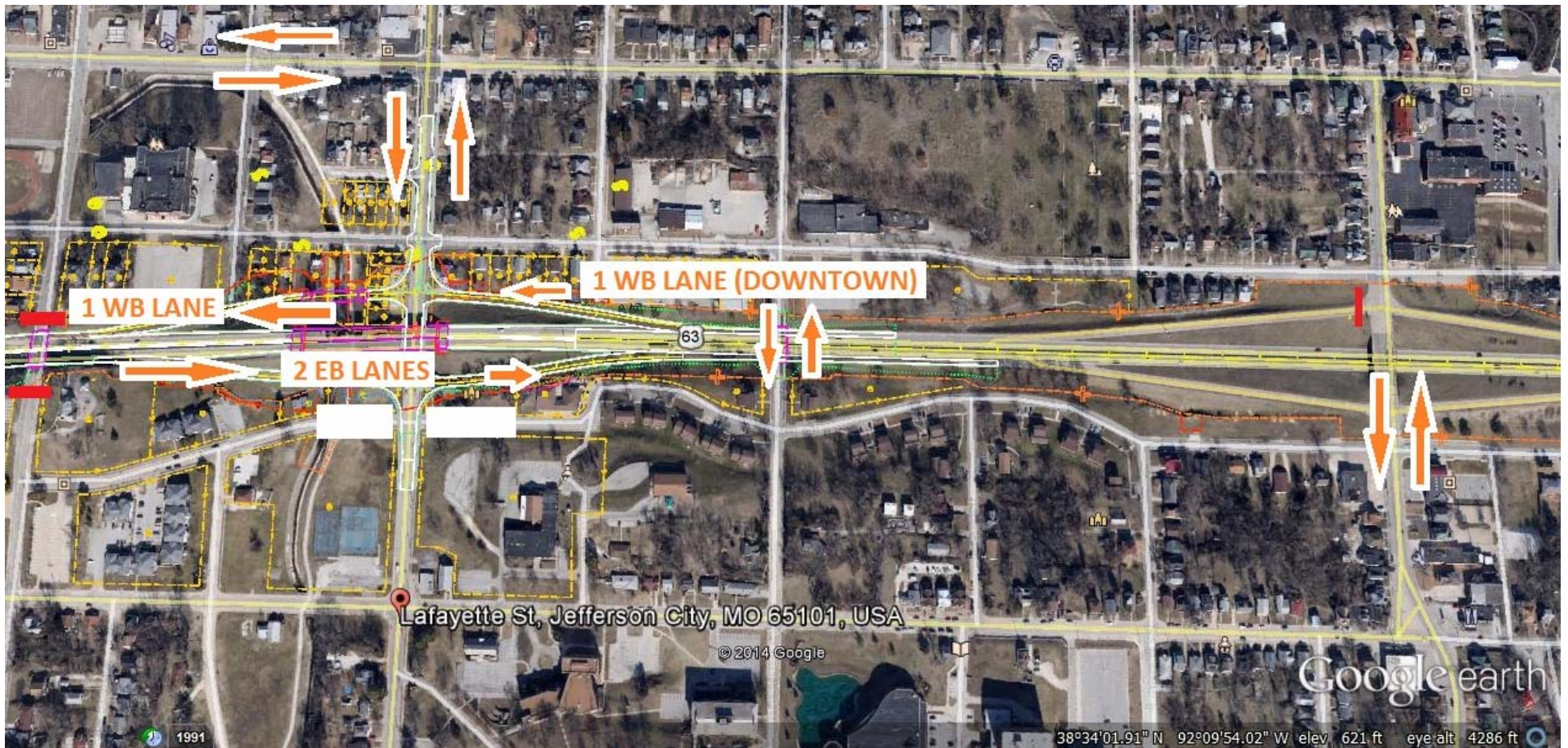
- One additional lane in each direction on US 50 from Monroe to Clark
- Involves 6 bridges (3 replaced, 2 new, 1 rehab)
- New interchange at US 50 and Lafayette
- Significant traffic impacts





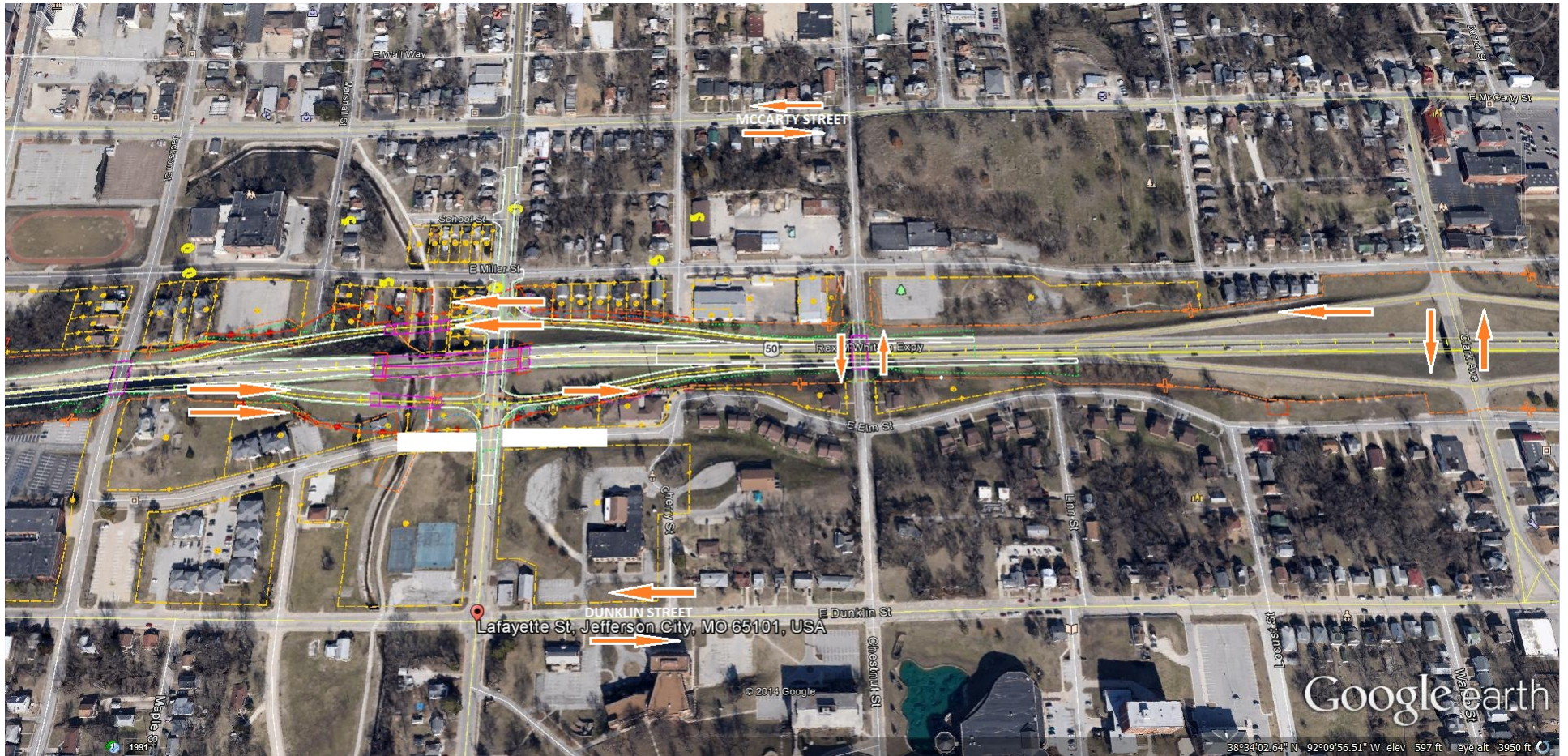
Stage 1:

- Elm St. Closed Permanently
- Greenway Closed
- Chestnut & Jackson St. Closed



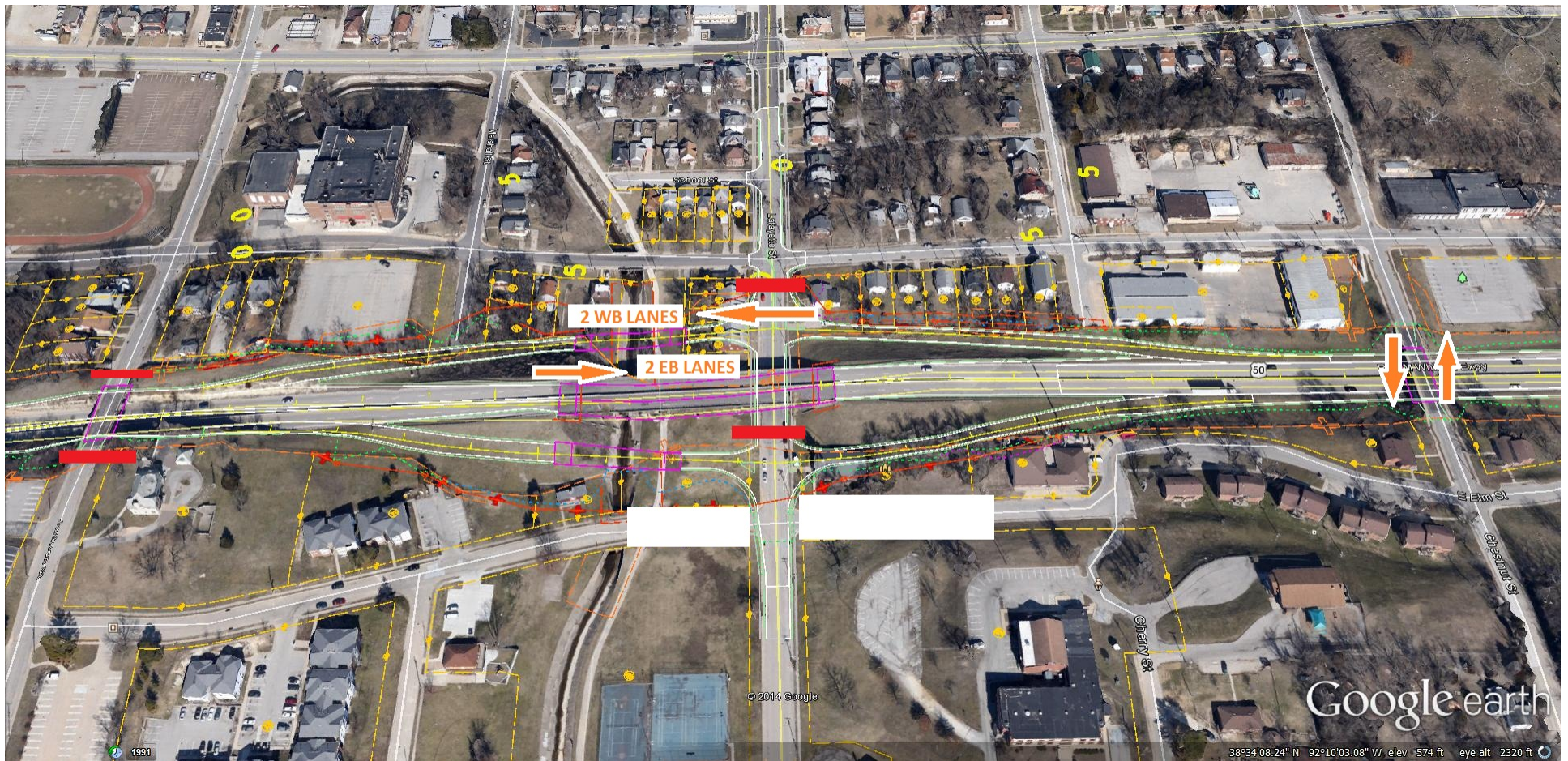
Stage 2:

- Jackson St. Remains Closed
- Reopen Chestnut St. – 2 way traffic to Dunklin
- 1 WB Lane Detoured to McCarty (Downtown)
- WB Clark on-ramp Closed
- Ramp 4 (WB on-ramp) Opened at Lafayette



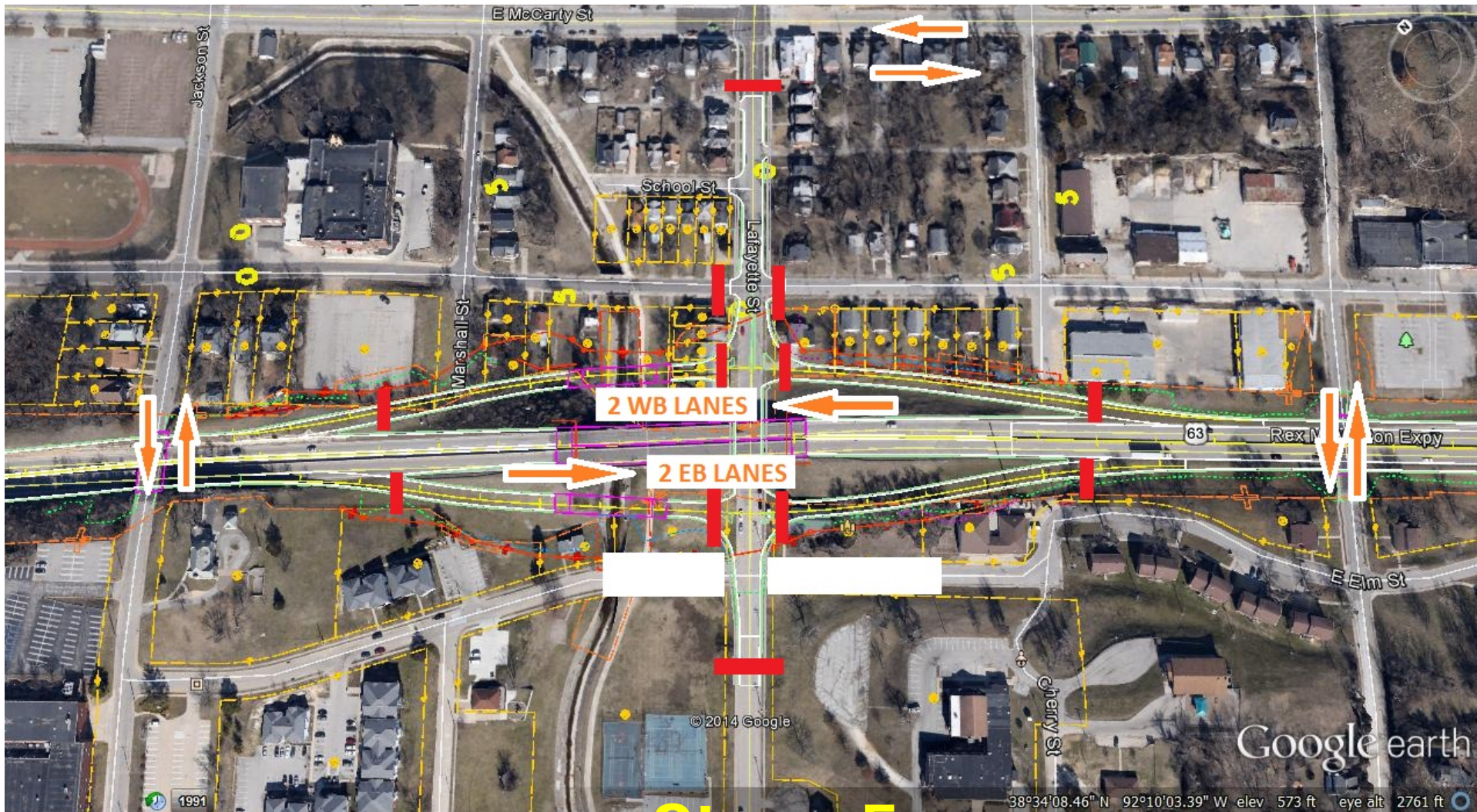
Stage 3:

- 2 EB Lanes on US 50 Remains Same
- 2 WB Lanes Detoured to Ramps 1 & 3
- Lafayette Closed Between Miller & Ramp 4
- Ramp 4 (WB on-ramp) Remains Open
- Jackson St. Remains Closed



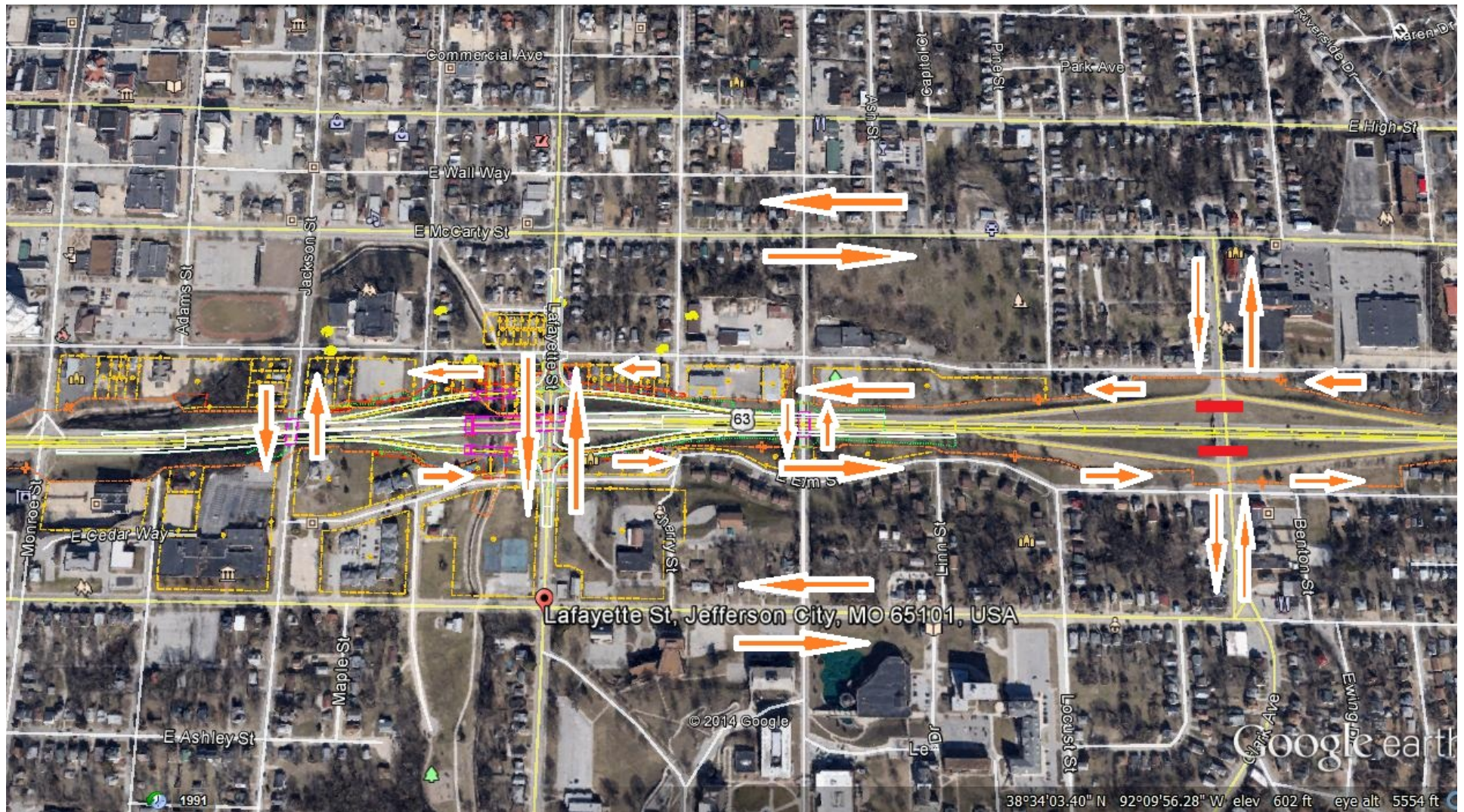
Stage 4:

- 2 EB Lanes Moved to New WB 50 Bridge
- 2 WB Lanes Using Ramps 1 & 3
- Lafayette Closed Between Miller & Ramp 4
- Jackson St. Still Closed
- Ramp 4 Remains Open



Stage 5:

- All 4 Lanes of US 50 Reopen
- Jackson St. Reopens
- Ramps Closed
- Lafayette St. Closed to thru traffic



Stage 6:

- Lafayette Interchange Open
- Close Clark Ave. Interchange for Bridge Rehab

Summary

- Permanent Closure of Elm St. at Lafayette
- Temporary Closures of:
 - Whitton Expressway (US 50-63)
 - Jackson St.
 - Chestnut St.
 - Lafayette St.
 - Clark Ave.
 - Greenway
- Detours
 - McCarty/Dunklin
 - Eastland, 7 Hills & Ellis



How to contact me

Mike Dusenberg, PE

Project Manager

Office: 751-7699

E-mail: michael.dusenberg@modot.mo.gov



QUESTIONS

??

