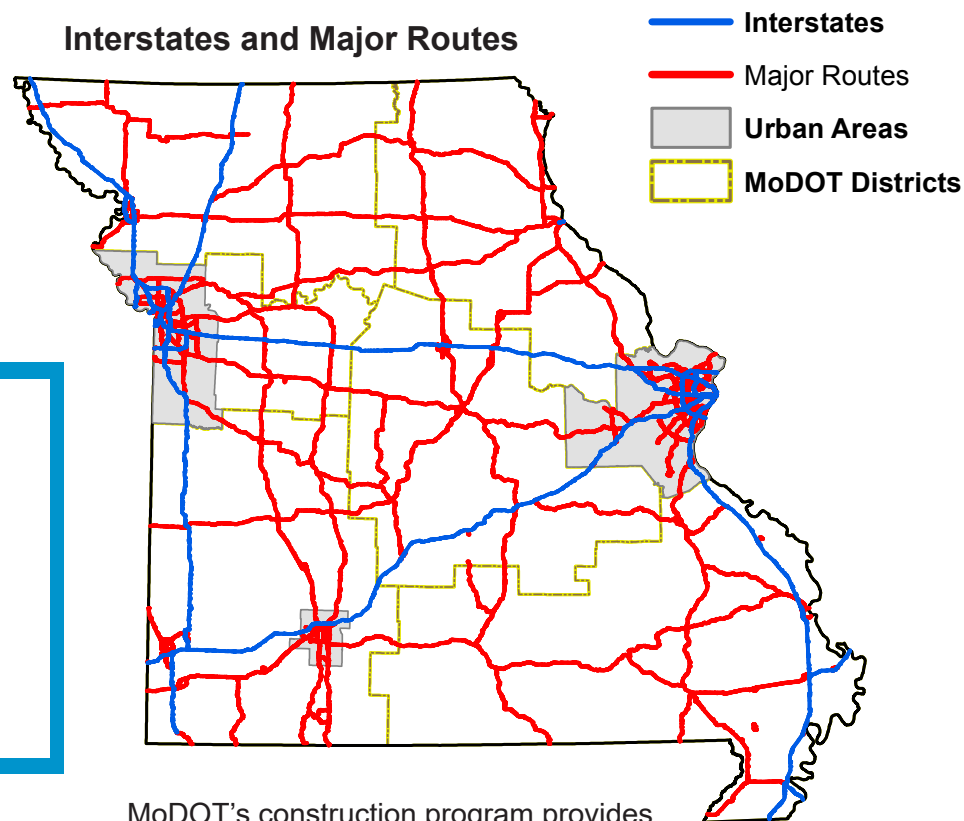


# The Current Condition of MISSOURI TRANSPORTATION

## What is the Current Condition of Missouri Transportation?

Last year, 51.8 billion miles were traveled on the state highway system. The majority of travel occurs on interstates and major routes. Interstates and major routes include just 5,542 miles of the 33,832 miles of highway in Missouri, but account for 77% of the travel. Currently, 91% of these routes are in good condition as MoDOT has focused on improving and maintaining these routes over the last decade.

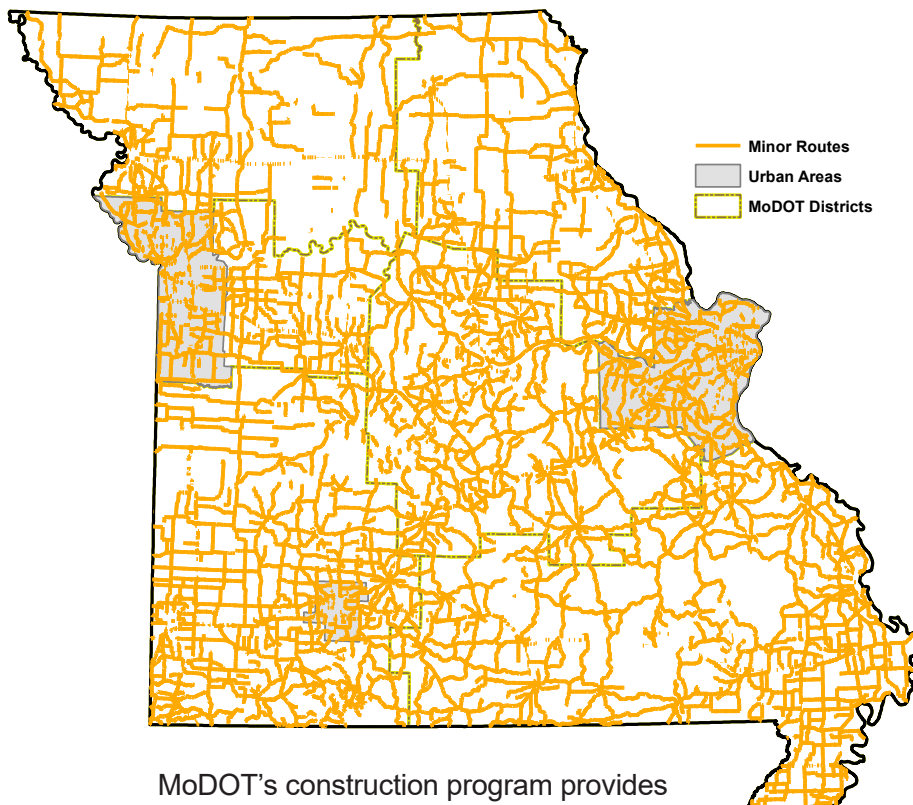


39.8 billion miles were driven on interstates and major routes; therefore, on average 7.2 million vehicles traveled each mile.

MoDOT's construction program provides the funding to maintain these routes.

Missouri's minor routes make up the largest group of state highways, accounting for 17,333 miles – just over one-half of the entire state highway system. About 22% of all state travel occurs on these routes. Currently, 81% of these routes are in good condition.

### Minor Routes



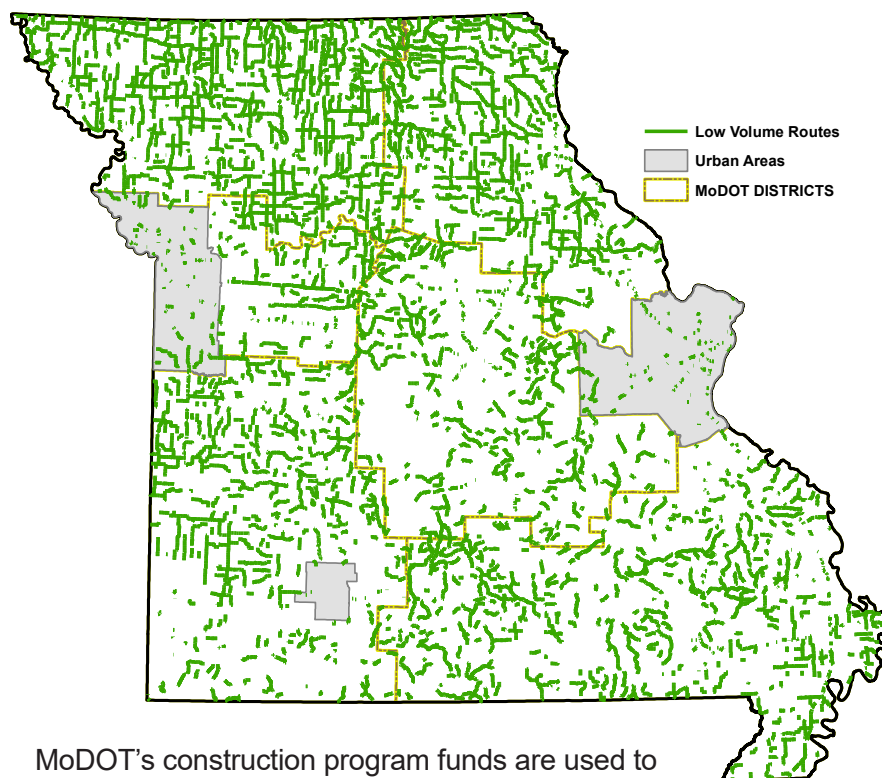
MoDOT's construction program provides the funding to maintain these routes.

11.3 billion miles were driven on minor routes; therefore, on average 652,000 vehicles traveled each mile.

# The Current Condition of MISSOURI TRANSPORTATION

The final tier of Missouri highways is low volume routes. Each of these routes carry less than 400 vehicles per day and primarily serve local transportation needs. Missouri has 10,957 miles of low volume routes, accounting for about one-third of the state system. Travel on these routes is less than 2% of all state highway travel. Currently, 70% of these routes are in good condition.

**Low Volume Routes**

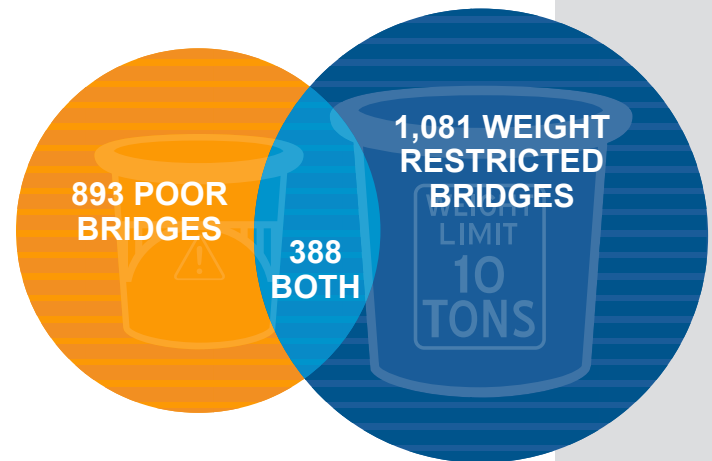


MoDOT's construction program funds are used to maintain the bridges on these routes; however, the pavements on these routes are maintained using MoDOT's maintenance funds.

0.8 billion miles were driven on low volume routes; therefore, on average 73,000 vehicles traveled each mile.

# The Current Condition of MISSOURI TRANSPORTATION

In addition to the huge network of highways, Missouri has 10,397 bridges of varying sizes, including 209 major bridges that are longer than 1,000 feet, or about the length of three football fields. Currently, 893 bridges are in poor condition. MoDOT inspects these bridges on a regular basis to ensure they are safe for travelers. If a bridge is unsafe, it is closed until repairs can be made. Missouri also has 1,081 weight-restricted bridges, with 388 of them also in poor condition.



Totals	Typical Bridges	Major Bridges	All Bridges
Number	10,188	209	10,397
Area (square feet)	64,429,779	23,231,398	87,661,177
Average Age (years)	49.4	37.7	48.4
Weight Restricted	1,041	40	1,081
Area of Weight Restricted	6,964,669	5,655,748	12,620,417
Poor	867	26	893
Area of Poor	4,924,096	2,677,582	7,601,678
Both Poor and Weight Restricted	378	10	388
Area Both Poor and Weight Restricted	1,563,090	1,166,795	2,729,885
Only Poor and Only Weight Restricted	1,530	56	1,586
Area of Only Poor or Only Weight Restricted	10,325,675	7,166,536	17,492,211

## Approximate vehicle weights

Lower weight limits for about 1,300 load-posted state bridges:



AVERAGE STANDARD  
CAR: **1.5 TONS**



AVERAGE PICKUP  
TRUCK: **3 TONS**



AVERAGE  
AMBULANCE: **5 TONS**



AVERAGE DELIVERY  
TRUCK: **6 TONS**



AVERAGE  
LOADED  
SCHOOL BUS:  
**17 TONS**



AVERAGE LOADED  
GARBAGE TRUCK:  
**25 TONS**



AVERAGE  
LOADED  
CHARTER  
BUS:  
**20 TONS**



AVERAGE  
FIRE TRUCK:  
**19-30 TONS**



AVERAGE LOADED  
COMBINE HARVESTER:  
**30 TONS**



AVERAGE LOADED  
PLOW TRUCK:  
**28 TONS**



AVERAGE LOADED  
CONCRETE TRUCK:  
**33 TONS**



AVERAGE LOADED  
DUMP TRUCK:  
**36 TONS**

AVERAGE  
LOADED  
TRACTOR  
TRAILER:  
**40 TONS**



Source: PennDOT

James Hilston/Post-Gazette

