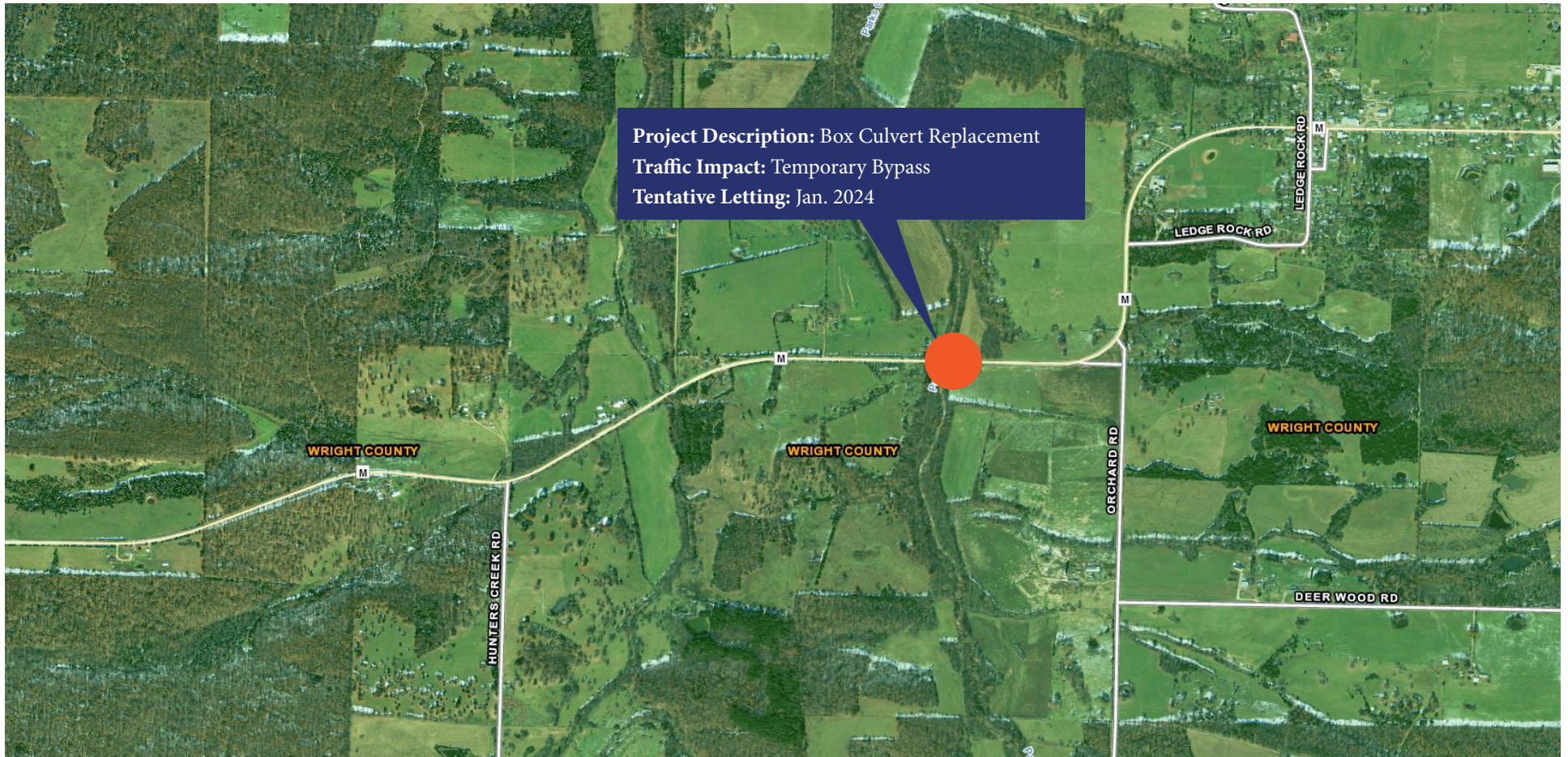


## WRIGHT COUNTY

# Route M Box Culvert over Parks Creek

[Comment on this Project >](#)



Missouri Department of Transportation | Southeast District | 2675 North Main Street  
Sikeston, MO 63801 | 1-888 ASK MODOT (275-6636) | [www.modot.org/southeast](http://www.modot.org/southeast)