



IFB #17-413
INTERSTATE DRIVE MULTI-USE TRAIL PROJECT, TAP-7304(608)
ADDENDUM 1

Addendum1 issued November 3, 2017

A non-mandatory pre-bid meeting was held November 2, 2017 at Wentzville City Hall, 310 W Pearce Blvd. A copy of the pre-bid attendees list and pre-bid agenda is attached to this addendum. The deadline for submitting questions is November 9, 2017.

The following questions/clarifications are hereby incorporated into the Invitation for Bids:

- 1) A request was made for the CAD drawings. If you wish to receive the FTP link to access the CAD drawings, please email Alice Winkelman at Alice.Winkelman@wentzvillemo.org
- 2) On the Job Training Requirements are Zero (0) Hours.
- 3) For clarification, bid add alternate should be the cost to increase sidewalk thickness from 4" to 5", or in other words the cost for the additional 1-inch thickness of sidewalk. It is not an alternate of 5" to compare to the 4".
- 4) Norfolk Southern rubber gasket railway flanges may be obtained by Polycorp, Ltd. The contact information is below. Bidders will need to provide the following information for a quote:

115# Rail, 4'-8.5" rail gauge, Length 10 feet

Ingram Carney | Inside Sales Transportation Division, M.E.T.
Polycorp Ltd. 33 York Street West | Elora, Ontario, Canada N0B 1S0
☎ 519-846-2075 ex: 351 | Toll free: 1-800-265-2710 | Cell: 519-500-7003



The representative for Polycorp provided a detail of their rubber gasket railway for the 115# rail. Also, of note, there is a joint bar connecting two rail sections within the foot print of the sidewalk. Therefore, the rubber gasket will have to be cut by the Contractor using the specifications as attached.

- 5) Bidder Question: Will special insurance and flaggers be required for work adjacent to the railroad?

Answer: We followed up with Norfolk Southern regarding these requirements. Insurance is not required in this case as this is a private rail spur on City right-of-way. However, they recommend that flaggers are still provided.

- 6) Sanitary force main marks were not relocated by the Wastewater Division. They were instead converted to a PVC riser pipe with a valve hat. These will need to be cut flush

with the trail to meet ADA requirements and be completed by either the Contractor or Wastewater Division at the Contractor's option.

All other Terms and Conditions as applicable to this Invitation for Bid shall remain as stated.

This addendum forms a part of the contract documents and modifies the original bidding documents dated October 20, 2017. Contractor shall acknowledge receipt of this addendum by signing and attaching to their bid. Failure to do so may subject bidder to disqualification.

Bidder's Signature

Printed Name and Title

Company Name

Date

End of Addendum 1



33 YORK STREET
ELORA, ONTARIO
CANADA N0B 1S0
800-265-2710

CLIENT

TITLE

115# AREA EPFLEX W/ EPLOCK CLIP

DWG. No. RA-4115-41-7A

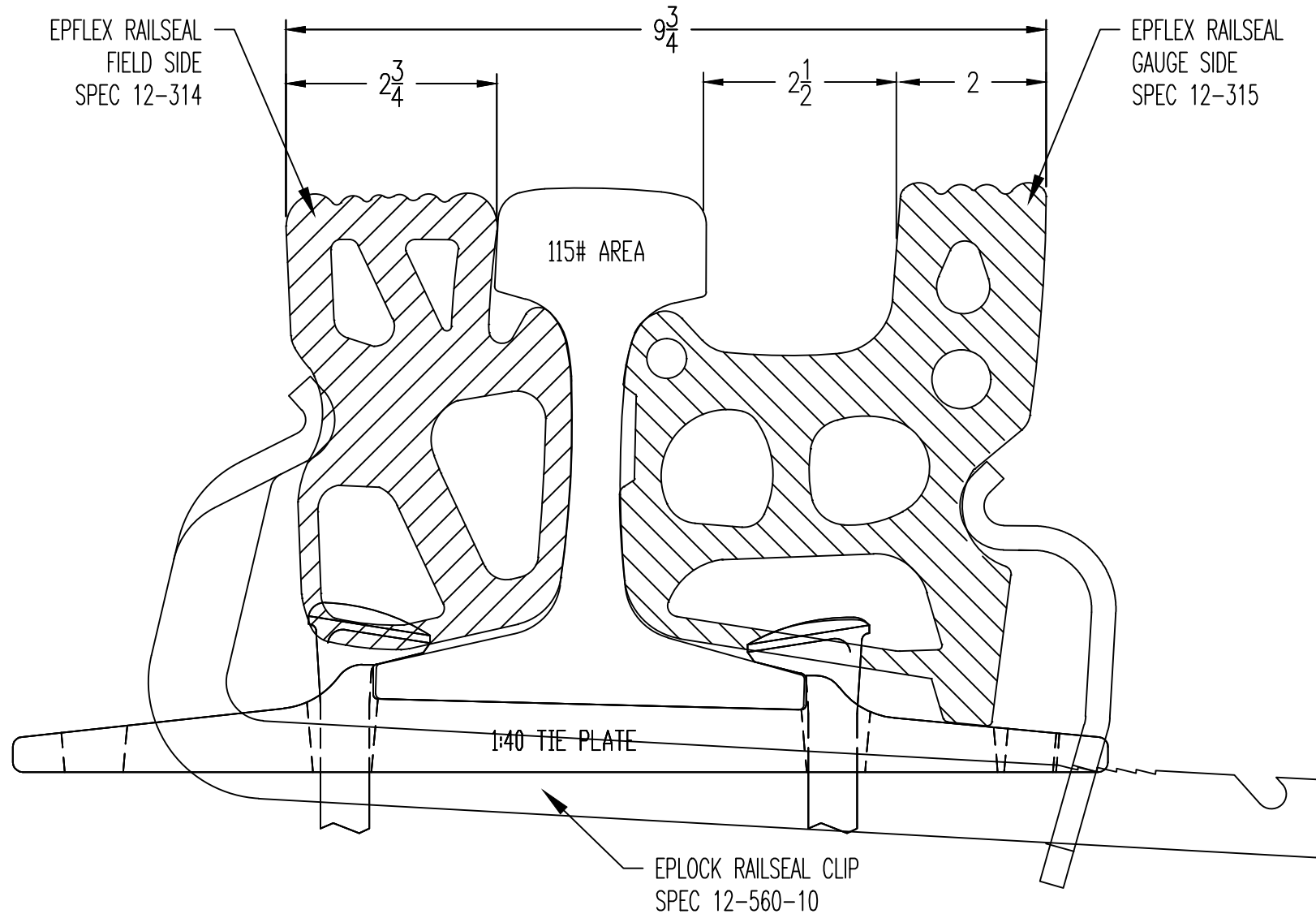
DWN. C. LEWIS

DATE MAR 10/15

REV.

SCALE 1:2

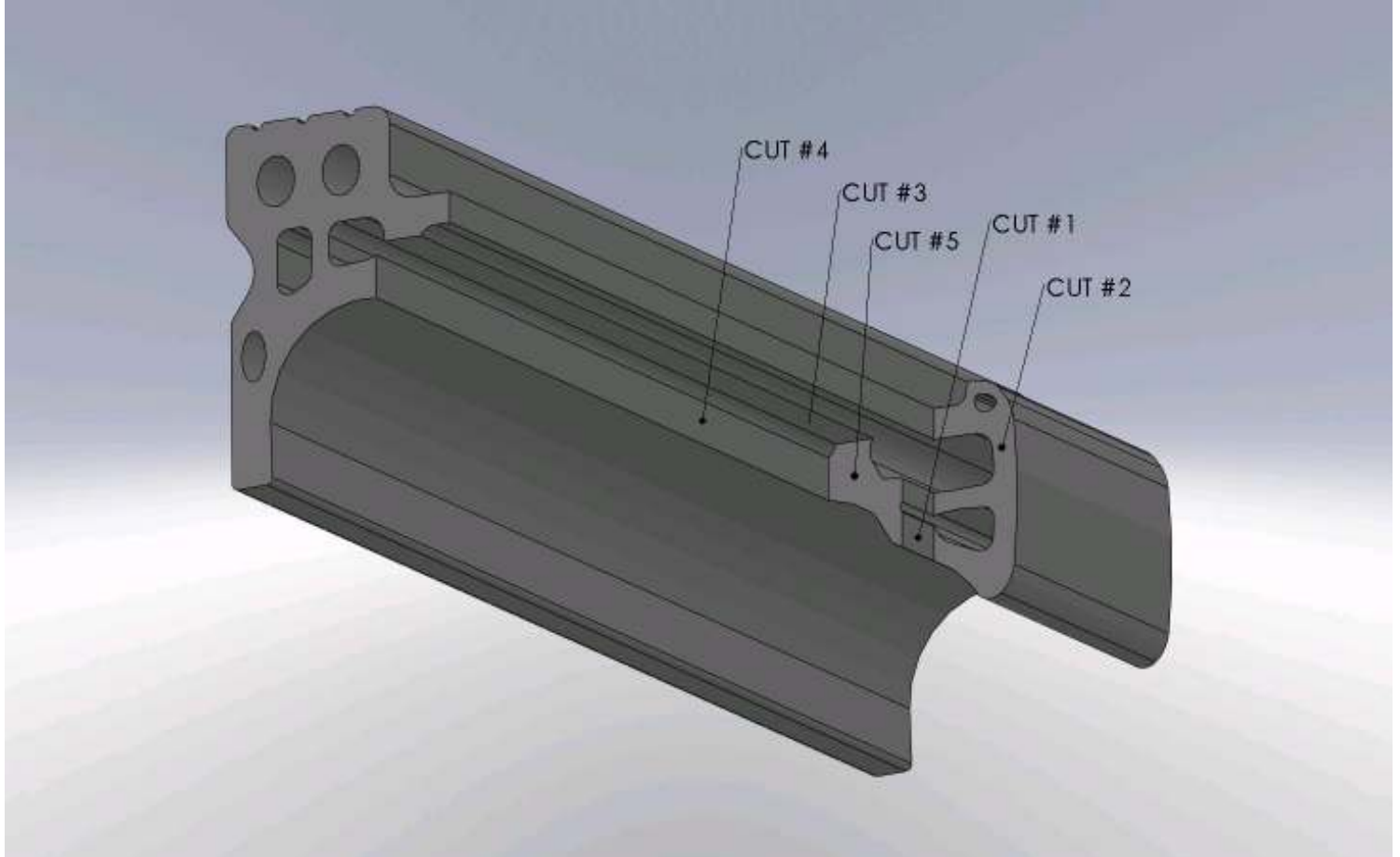
THIS DRAWING HAS COPYRIGHT, WHICH IS OWNED BY POLYCORP. NEITHER THIS DRAWING ITSELF NOR ARTICLE NOR COMPONENT ILLUSTRATED THEREIN MAY BE REPRODUCED IN WHOLE OR IN PART, IN ANY FORM WHATSOEVER WITHOUT THE PRIOR WRITTEN AUTHORITY FROM POLYCORP. THIS DRAWING HAS BEEN DELIVERED ON THE UNDERSTANDING THAT IT IS NOT USED, IN ANY WAY, AGAINST THE INTERESTS OF POLYCORP AND WILL BE RETURNED UPON DEMAND.



Cutting Railseal for Joint Bars

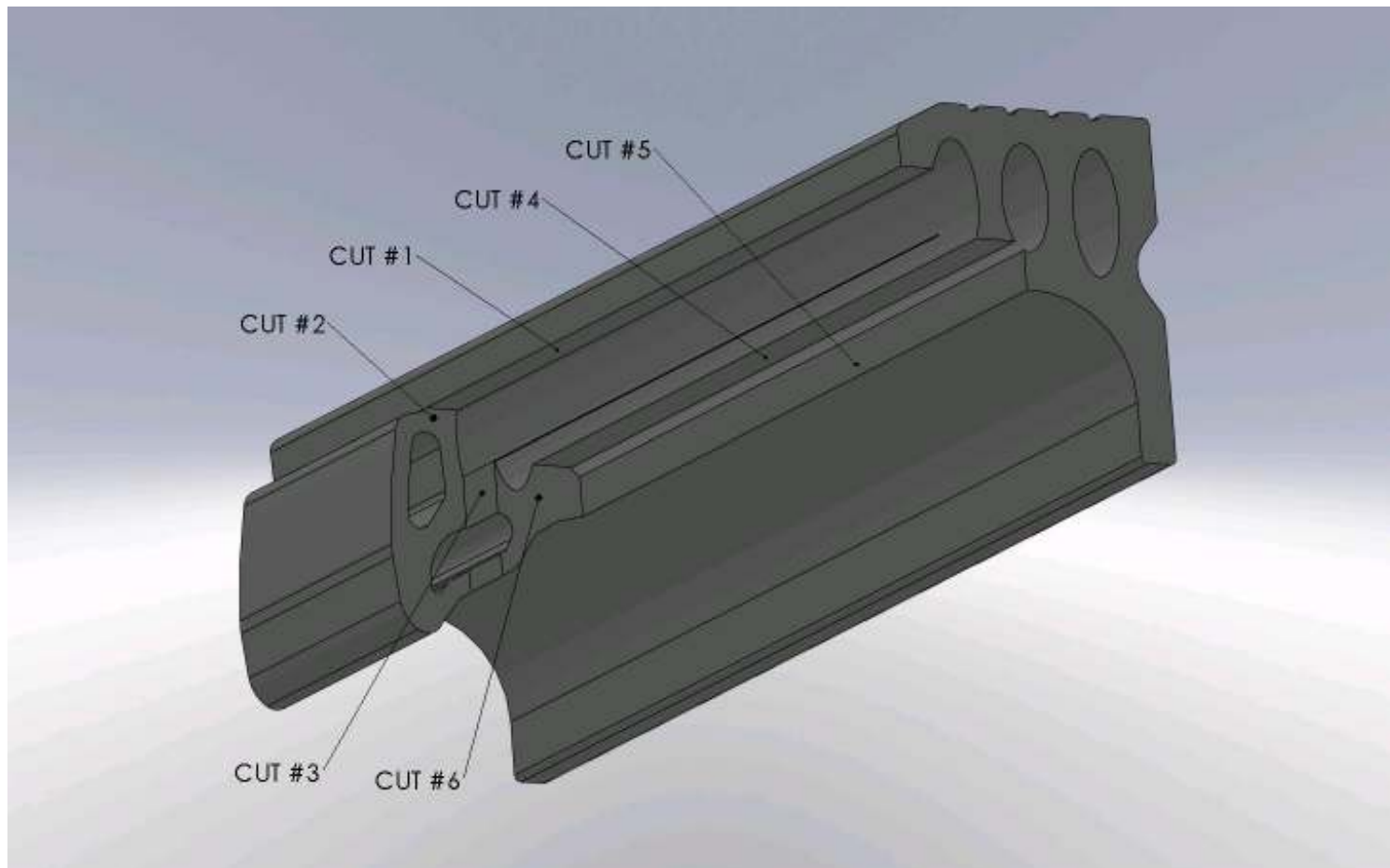
Gauge Side

Cuts 1 and 2 are to fit around the actual joint bar. The remaining cuts are to accommodate the nuts. Field measure the joint bars and bolts, and cut railseal to fit. As an alternative, individual notches could be cut for each nut. The bolt heads will require at most a small cut out.

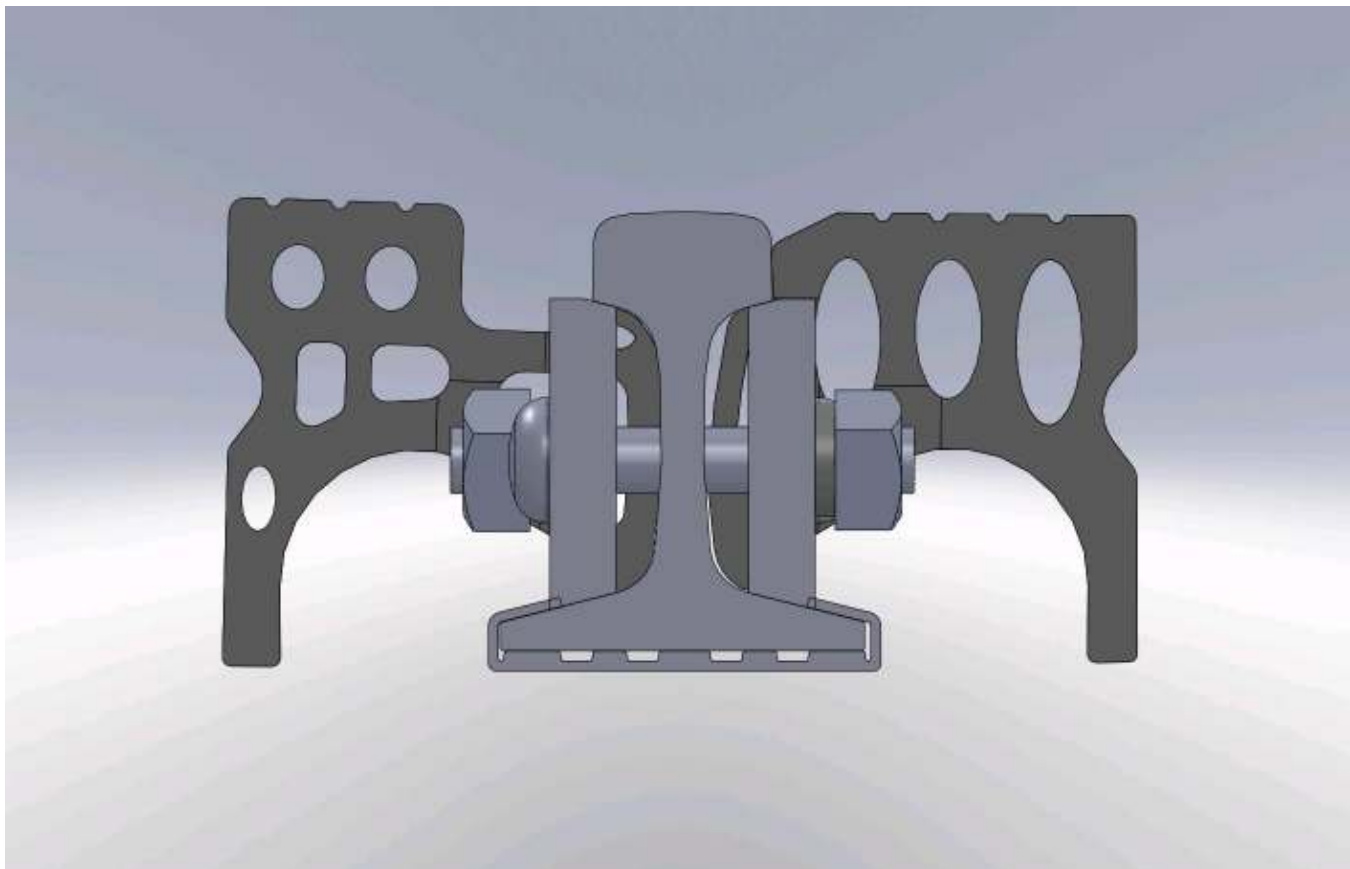
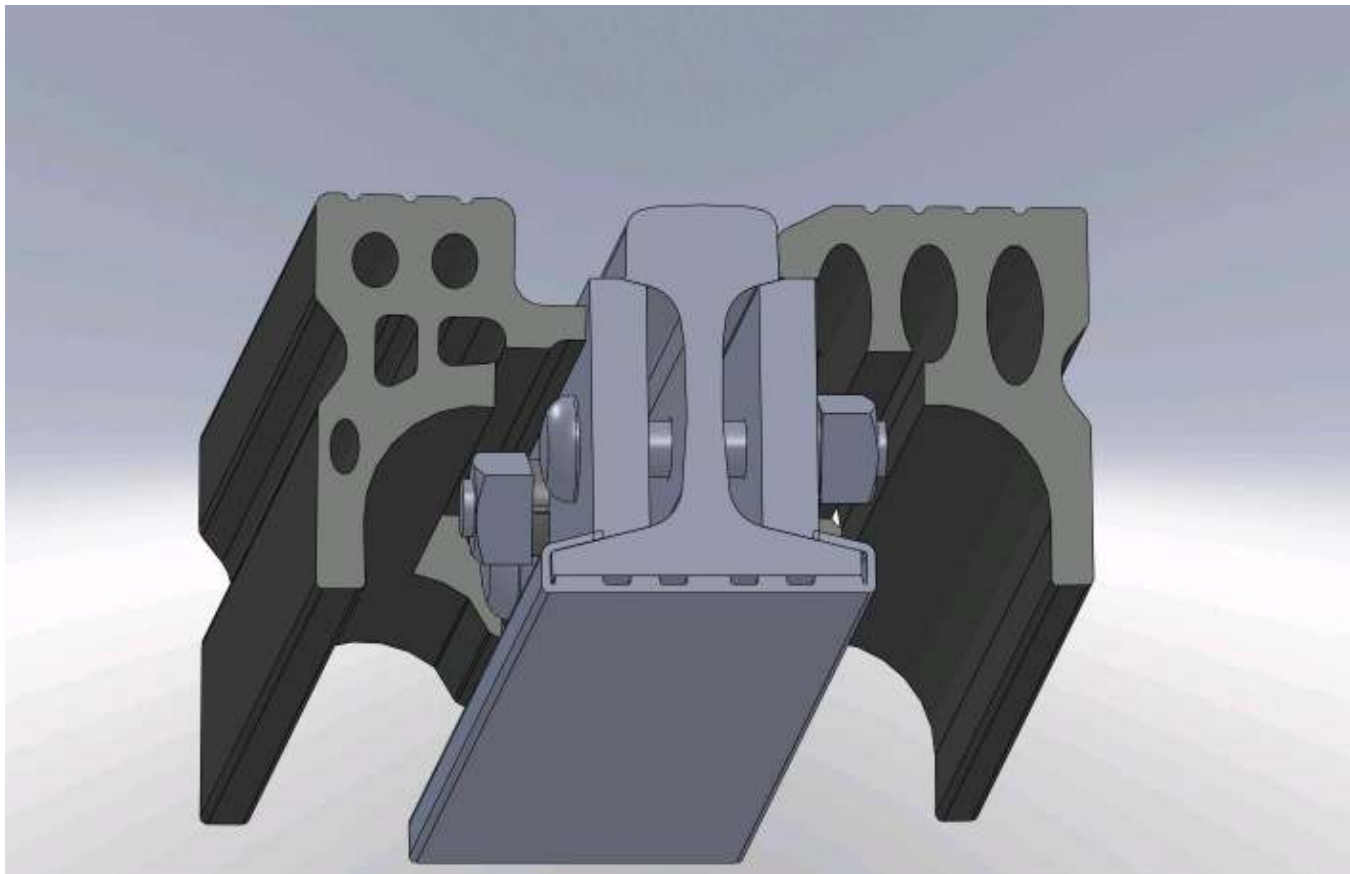


Field Side

Cuts 1, 2 and 3 are to fit around the actual joint bar. The remaining cuts are to accommodate the bolts. Field measure the joint bars and bolts, and cut railseal to fit. As an alternative, individual notches could be cut for each bolt head and nut.



View of railseal on 115# section of joint bar.



NON-MANDATORY PREBID MEETING - ATTENDEES

IFB #17-413 INTERSTATE DRIVE TRAIL PROJECT

NOVEMBER 2, 2017, 1 p.m.

NAME	COMPANY	EMAIL	PHONE
15 David Ilges	Amcon	davidilges@yahoo.com	636-379-9396
16 Chris Scanlon	Pace Const	CScanlon@pacconst.com	314 524 7223
17 Gregory Wallace	COW	—	—
18 Blake Briggs	R.V. Wagner	estimating@rvwagner.com	314-802-1600
19 Ryan Larier	Gershenson	rlarier@gershenson.com	636-549-0198
20 Greg Karraabach	Karraabach	office@karraabachconst.com	636-808-5420
21			
22			
23			
24			
25			
26			



City of Wentzville
INTERSTATE DR MULTI-USE TRAIL
IFB #17-413
NON-MANDATORY PRE-BID MEETING AGENDA
November 2, 2017, 1 p.m.

INTRODUCTION OF CITY STAFF

GENERAL / ADMINISTRATIVE:

1. Questions regarding this project are due by Nov. 9th . Questions may be submitted through the e-bidding system or emailed to Alice Winkelman, Senior Procurement Specialist, alice.winkelman@wentzvillemo.org
2. Addendums and plan holders list will be available through the City's E-bidding system.
3. Any interpretation made verbally to prospective bidders is not official. Only information provided in the form of a written addendum to the bid is valid.
4. Sealed paper bids will be accepted at **new City Hall, 1001 Schroeder Creek Blvd.**, Wentzville, MO 63385 until 2:00 pm (local time) on Nov 17, 2017. At that time, the public bid opening will be conducted.

PROJECT:

1. Generally the work consists of the installation of a 10-foot wide concrete sidewalk trail from Wilmer Road to Highway Z along the southern green space of Interstate Drive. Installation of the trail will include some traffic signal modification components for a pedestrian crossing.
2. Anticipated Schedule:
 - Nov. ~~8~~9, 2017 – Questions Due
 - Nov 17, 2017 – Bid Opening
 - Dec 13, 2017 – Board of Aldermen Meeting
 - Dec 14, 2017 – Notice of Award
 - Dec 29, 2017 – Insurance and Bonds
 - Jan 8, 2018 – Notice to Proceed
 - July 6, 2018 – Substantial Completion
3. Contract Calendar Days; 180 Days
4. Bid Add Alternates; Additional Pavement Thickness
5. Phasing of Work and Utility Coordination
 - Pavement Calendar Restrictions from November 15th to March 15th unless approved by the Engineer (35 deg F and rising with predicted high temperature over 40 deg F)

- Sanitary force main markers were converted to stand pipe with valve hat. These will need to be cut flush to the trails finished grade.

6. Traffic Control

7. Working Hours 7 am to 6 pm Monday-Friday. No Work on Saturdays, Sundays, or City Holidays without prior approval from the City.

8. All interested parties should carefully read all construction documents prior to submitting a bid for this project.

9. This is a prevailing wage project. Copies of the state and federal wage rates are included in the bid documents. The contractor and subcontractors shall pay the higher of these two applicable wage rates.

10. DBE Goal of 14%

11. Questions