



**Missouri's
Local
Program**
*for community
development*

COVER SHEET

(This must accompany your firm's letter of interest and does not count in the page limit)

Firm's Full Legal
Name: _____

Firm Contact Name: _____

Contact Email
Address: _____

Firm's Mailing Address: _____

Work Category:

- Roadway Design
- Trails & Sidewalks
- Construction Inspection
- Traffic Engineering & TEAP
- Structures
- Environmental
- Historic Preservation
- Multimodal Planning / Systems and Facilities Design
- Transportation Planning – **NEW CATEGORY**

December 9, 2025

Missouri Department of Transportation
LPA On-Call Engineering Services
Roadway Design



RE: Request for Qualifications - On-Call Project Roadway Design Engineering Services

Dear Judging Panel:

Weis Design Group, Inc. (WDG) appreciates the opportunity to submit our qualifications for the LPA On-Call Engineering services, specifically **Roadway Design**. WDG has 56 years of experience designing roadway improvements for local municipalities. WDG is an approved consultant on the MoDOT Pre-qualification List and compliant with all LPA Financial and On-Call requirements. Weis Design Group is ready to assist the LPA in accomplishing its goals and completing future successful projects.

Weis Design Group is a **civil engineering firm** that was founded in 1969. WDG provides accessible, on-call service to municipalities throughout Missouri and Illinois. With more than **56 years of experience**, Weis Design Group offers planning, grant writing, design, project management, and construction administration on projects that include, but are not limited to: roadways, stormwater and wastewater collection, trails, sidewalks, shared use paths, ADA accessibility, parks improvements, athletic fields, multi-use courts, and parking lots.

Service to our clients is the foundation of our business. Our first three clients are still clients of Weis Design Group today. Our goal is to provide outstanding service as well as promote a long-standing partnership with each client. **Weis Design Group has provided design and construction engineering services on over four dozen federally funded roadway projects within the St. Louis Metro area.** With each project, Tom Weis and myself (Lindsay) work closely with both City Staff and Elected Officials to ensure a smooth project experience. We meet with City Staff and Elected Officials to understand and create a more detailed project scope, prepare a detailed cost estimate, prepare grant documents (if desired), create 3D conceptual renderings to show residents and local businesses what the project will look like, design the improvements, work with local utilities and agencies on approvals, create bid documents and specifications in order for the City to receive competitive bids, and administer all construction.



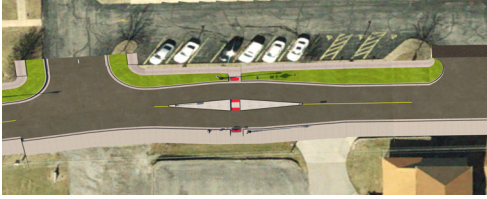
WHY WEIS DESIGN GROUP? LOCAL, RELIABLE, 56 YEARS OF MUNICIPAL EXPERIENCE, PROJECT MANAGEMENT EXPERTS

We would greatly appreciate the opportunity to continue show you our outstanding & quality professional engineering services. Should you have any questions or require additional information, please contact me at 314.565.1164 (cell) or lweis-smith@weisdesigngroup.com.

Respectfully Submitted,

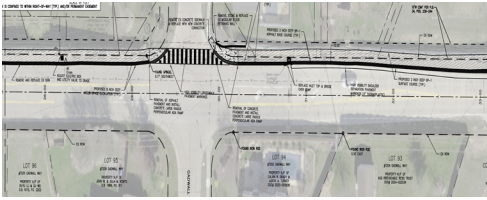
Lindsay M. Weis-Smith
President

LINDSAY M. WEIS-SMITH - President & Project Manager - received her Bachelor of Science Degree in Science Education from Lindenwood University. Mrs. Weis-Smith has 22 years of experience in managing engineering projects, including: grant applications, feasibility studies, bond issue preparation, street & park masterplans, roadway design & improvement projects (both federal & LPA), park design & improvement projects, construction administration, project close-out, and public involvement & community engagement.



*City of Flint Hill, MO Project Name: [Hwy P Improvements \(Phase 1\) \(TAP Project\)](#)
Project Description: Weis Design Group was responsible for the entire grant application and is currently getting ready to begin the design phase. This project is planned to include: ~2,300 feet of overlay improvements, storm sewers, new sidewalk, curbing, pedestrian crosswalks, driveway aprons, and decorative street lighting.*

THOMAS P. WEIS, P.E. - Vice President & Construction Engineer - [E-22960 MO, 062-045044 IL](#), received his Bachelor of Science in Civil Engineering from the University of Kansas and became a registered professional engineer in Missouri and Illinois in 1987. He has over 37 years of experience in designing roads, sewers, bridges, parks and recreation facilities throughout the Bi-State area. Mr. Weis is a member of the American Council of Engineering Companies, American Public Works Association, St. Louis County Municipal League, serves on the Local Chapter of Folds of Honor, and Missouri Parks & Recreation Association. Mr. Weis directs and oversees all design, construction engineering, and managerial functions within the firm.



*City of Dardenne Prairie, MO Project Name: [Henning Road SUP \(TAP Project\)](#)
Project Description: Weis Design Group was responsible for the entire grant application and is currently in the design phase of this project. This project includes: the addition of ~one mile of 10' wide shared use path along Henning Road with RRFB's and high visibility striping at the crosswalks.*

MICHAEL J. SHILLITO, P.E. - Chief Engineer - [E-23355 MO](#), received his Bachelor of Science Degree in Civil Engineering from the University of Missouri Rolla, and became a registered engineer in 1989. Mr. Shillito has over 35 years of experience in designing roads, sewers, bridges, parks and recreation facilities throughout the Midwest. Mr. Shillito's responsibilities at WDG include: project specific site design, storm sewer design, road project design and layout, flood plain studies and hydraulic calculations.



*City of Ferguson, MO Project Name: [Frost Avenue Improvements \(STP Project\)](#)
Project Description: Weis Design Group was responsible for the entire grant application, design, and construction administration. This project included: ~approximately 0.5 miles of street milling, average 2" asphalt overlay, sidewalk reconstruction and ADA ramps.*

BRENDAN T. WEIS, R.E. - Civil Designer received his Bachelor of Science Degree in Construction Management from Missouri State University. Mr. Weis has ten years of experience in administering construction of roads, sewers, bridges, parks and recreation facilities throughout the Midwest. Mr. Weis's responsibilities at WDG include: design of projects, coordination with local agencies for approvals, internal QA/QC, review of project budgets, and overseeing construction of all projects; including coordination with Client, Contractor, Local Agencies, Utilities, Testing, and residents.



*City of Rock Hill, MO Project Name: [Kortwright Avenue Improvements \(STP Project\)](#)
Project Description: Weis Design Group was responsible for the entire grant application, design, and construction administration. This project included: ~2,300 feet of overlay improvements, storm sewers, new sidewalk, curbing, pedestrian crosswalks, driveway aprons, and decorative street lighting.*

W Weis Design Group Firm Familiarity & Capabilities

PROJECT INNOVATION

While decades of valuable experience are relied upon daily, Engineers and Planners from this office realize that attending seminars, presentations, and workshops are critical to placing ourselves on the leading edge of understanding technology and recognizing design trends. We take pride knowing that [we go the extra mile to keep informed](#) of the most recent and up-to-date technology, techniques, and materials used in the design and construction industry. Both our design and field engineers have the newest technological tools to ensure the project is designed and constructed per the plans and specifications, ranging from high performing software, to gauges needed to test asphalt, to smart levels used to ensure proper slopes at ADA ramps. Armed with the [best knowledge and resources](#), we enjoy implementing new concepts and technology into our wide variety of projects.

ABILITY TO MEET PROJECT BUDGET & SCHEDULE

Weis Design Group prides ourselves in the effort we put into the front-end planning of a project. For many of our clients, we assist them in applying for Federal or State grants. Schedule and estimates are a large part of the grant and planning process. To date, we have secured over \$8f0M in funding for municipalities to execute projects (roadway, trail/sidewalk, and park projects).

W WHEN COORDINATING WITH BOTH THE CITY AND AGENCIES, WE TAKE THE FOLLOWING PHILOSOPHIES

WE LISTEN - Employees are trained to have open communication with the Client and serve as their representation on day-to-day communications. We also understand the importance of keeping residents of the community and elected officials informed.

WE PROVIDE OUR CLIENTS WITH CRITICAL SERVICES - WDG uses in-house capability (both engineers and CAD technicians), specialized software and decades of experience to perform on-going analysis of our designs to assure the best in safety and reliability.

WE THINK OUTSIDE THE BOX - While past experience is an essential element in guiding the design and construction of a project - it cannot be allowed to contrain creative thinking and inventive solutions.

THIS SETS WEIS DESIGN GROUP APART FROM OTHERS!

ACCESSIBILITY OF FIRM & STAFF

WDG has three office locations within the St. Louis Metro area and we are [very familiar](#) with the surrounding area and look forward to working side-by-side with the LPA staff and agencies. Weis Design Group includes experienced engineers, designers and planners who have worked with numerous local municipalities and are very experienced in LPA roadway, trail & sidewalk design projects, including the construction administration. As with any project, our name is on the line and we want to make the expereince and final product stand out. We pride ourselves in attention to detail and [our customer service is top-notch!](#) During the design phase, we are readily available via phone or email to address any questions, comments or concerns from Elected Officials, City Staff, and/or residents. During construction phase, we are often on-site to address concerns. If we encounter a resident that wants an answer, we will communicate the response that was provided to Elected Officials and City Staff, too, to make sure everyone is on the same page. Weis Design Group will not take on any project that we can't handle. We look forward to working on future LPA roadway, trail & sidewalk design projects!

CAPACITY & CAPABILITIES OF THE WDG TEAM - MUNICIPAL ENGINEERS FOR MORE THAN 56 YEARS!

Weis Design Group is very excited about the opportunity to represnt local municipalities for their upcoming roadway design, trail & sidewalk design & construction administration projects. Serving LPA's is and has been the "bread and butter" of Weis Design Group for over fifty years!

CONTACT

Lindsay M. Weis-Smith
President
lweis-smith@weisdesigngroup.com

Thomas P. Weis, P.E.
Vice President
tpw@weisdesigngroup.com

LOCAL OFFICES

16286 Westwoods Bus. Pk. Dr.
Ellisville, MO 63021

5291 Fifth Street
Cottleville, MO 63304

1405 Nickell Street
Sauget, IL 62206

(P) 314.565.1164
www.weisdesigngroup.com

ORGANIZATION

Local civil engineering,
Family-owned,
Approved & Pre-Qualified
MoDOT Consultant

*Celebrating 56 years
of business!*

Weis Design Group is a proud member of the Missouri Municipal League, St. Louis County Municipal League and St. Charles County Municipal Leagues



THE FOUNDATION

Service to clients is the foundation of our business.

Weis Design Group (WDG) is a civil engineering firm that was **founded in 1969**. WDG is a locally-owned business with more than 54 years of experience. WDG provides accessible, **on-call services** to Municipalities throughout Missouri and Illinois.

"We bring creative and innovative solutions to the table, allowing the client to meet the budget and the timeline." Tom Weis, P.E., President

BUILDING A LONG-TERM PARTNERSHIP

Our first three clients are still clients of WDG today!

Weis Design Group's list of engineering services includes, but is not limited to:

- City Engineer
- On-Call Services
- Project Management
- Develop Conceptual Plans & Estimates
- Feasibility Studies
- Grant Writing
- Design Stormsewer Improvements
- Roadway Design & Enhancements
- Design Sidewalk & Trails
- Design Parks & Recreation Facilities
- Design Multi-use Courts
- Design Athletic Fields & Conversions
- Coordinate necessary surveys within the City
- Coordinate necessary construction staking
- Construction Engineering
- Construction Administration
- Stormwater Management Plans
- Public Involvement & Community Engagement



APPROACH

Communication is the key to success.

Weis Design Group assigns a Project Manager to each client. This person is in charge of day-to-day communication and organization of the project. The goals of every project are:

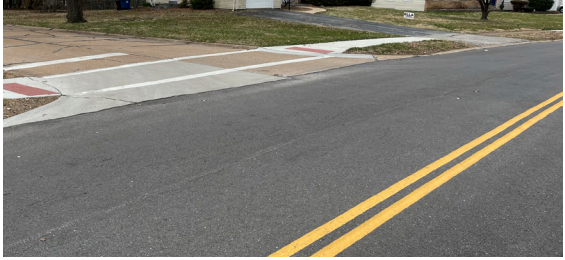
- Outstanding Customer Service
- Creative & Innovative Solutions
- Deliver project that client wants
- Meet Budget & Timeline



City of Ferguson, MO

Project Name: [Florissant Avenue \(STP Project\)](#)

Project Description: Weis Design Group was responsible for the entire grant application, design and construction administration of this project. This project included: ~1.5 miles of street milling, average 2"asphalt overlay, sidewalk reconstruction, and stamp colored concrete crosswalk reconstruction.



City of Ferguson, MO

Project Name: [Frost Avenue \(STP Project\)](#)

Project Description: Weis Design Group was responsible for the entire design and construction administration of this project. This project included: ~approximately 0.5 miles of street milling, average 2"asphalt overlay, sidewalk reconstruction and ADA ramps.



City of Rock Hill, MO

Project Name: [Kortwright Avenue Improvements \(STP Project\)](#)

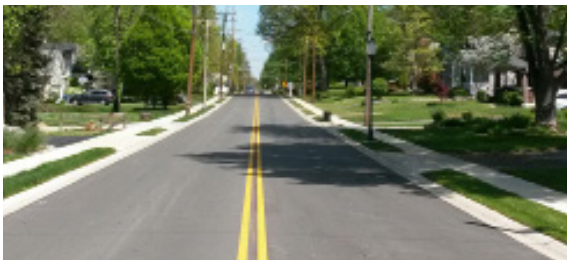
Project Description: Weis Design Group was responsible for the entire grant application, design, and construction administration. This project included: ~2,300 feet of overlay improvements, storm sewers, new sidewalk, curbing, pedestrian crosswalks, driveway aprons, and decorative street lighting.



City of Rock Hill, MO

Project Name: [N. Rock Hill Road Improvements \(STP Project\)](#)

Project Description: Weis Design Group was responsible for the entire grant application, design, and construction administration. This project included: concrete curb and gutter, driveway aprons, asphalt pavement, 4' wide concrete sidewalk, new storm sewer, and other misc. pavement repairs.



City of Glendale, MO

Project Name: [Kirkham Avenue \(STP Project\)](#)

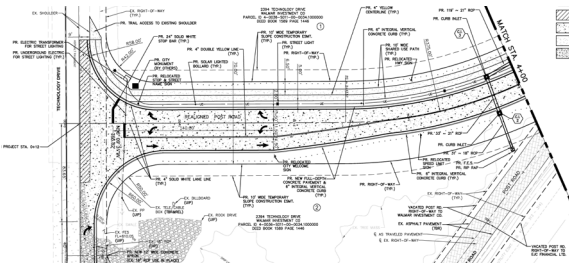
Project Description: Weis Design Group was responsible for the entire design and construction administration of this project. This project included: reconstruction of approximately 0.7miles of roadway, replacing the sidewalk, curbing, storm sewers, landscaping, street lighting, and driveway aprons.



City of Shrewsbury, MO

Project Name: [Weil Avenue \(STP Project\)](#)

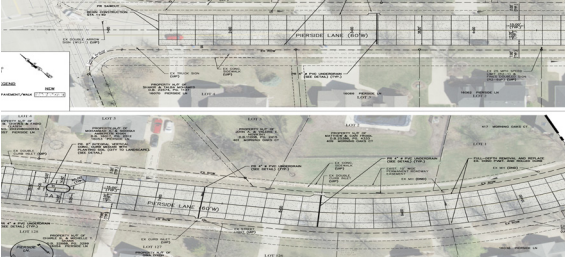
Project Description: Weis Design Group was responsible for the entire grant application, design, and construction administration. This project included: 0.75 miles of roadway, including milling and asphaltic overlay, curbing, sidewalk removal and replacement, and replacing accessible ramps.



City of Dardenne Prairie, MO

Project Name: [Post Road \(Phase 1\) - Design Phase \(STP Project\)](#)

Project Description: Weis Design Group was responsible for the entire grant application and the project is currently under design. This project includes: reconstruction of 0.40 miles of pavement, removal & replacement of 8'x12' reinforced concrete box culvert, addition of a 10' shared use path and crossings.



City of Ellisville, MO

Project Name: [Pierside Improvements - Design Phase \(STP Project\)](#)

Project Description: Weis Design Group was responsible for the entire grant application and the project is currently under design. This project includes: ~0.24 miles of concrete pavement removal and reconstruction, various pavement and sidewalk repairs, new pavement markings & signage, and medians.



City of Ferguson, MO

Project Name: [Church Street \(LPA Project\)](#)

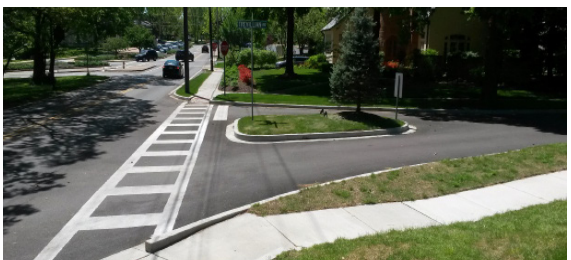
Project Description: Weis Design Group was responsible for the entire design and construction administration of this project. This project included: overlay of approximately 2.1 miles of roadway, accessible ramps, sidewalks, and driveway aprons.



City of Dardenne Prairie, MO

Project Name: [Town Square Ave Improvements \(STP Project\)](#)

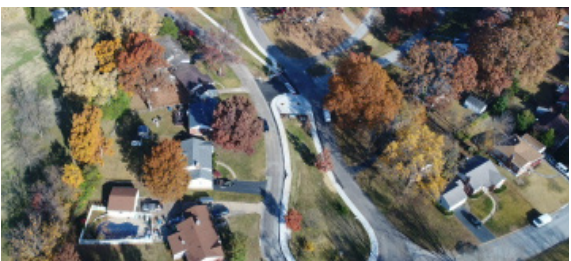
Project Description: Weis Design Group was responsible for the entire grant application and design. This project included: ~reconstruction of approximately 0.25 miles of roadway, including a asphaltic overlay, entrance/exit island, curbing, and driveway aprons.



City of Glendale, MO

Project Name: [Beverly & Trevilion Improvements \(LPA Project\)](#)

Project Description: Weis Design Group was responsible for the entire design and construction administration. This project included: ~reconstruction of approximately 0.25 miles of roadway, including a asphaltic overlay, entrance/exit island, curbing, and driveway aprons.



City of Bel Nor, MO

Project Name: [Horatio Park Trail \(MPGC Project\)](#)

Project Description: Weis Design Group was responsible for the entire Park Masterplan, cost estimate, design, and construction engineering of the project, which came in under budget. The project included: 6 foot wide concrete trail, stamped concrete entrances with landscaping, benches, pet fecal stations,