

MoDOT – Waterways Overview

Contact Information:

Email: MoPorts@modot.mo.gov

Tel: 1-888-MO-PORTS



Missouri Statute Chapter 68 RSMo allows for the formation of port authorities, and the department's waterways unit assists authorized cities and counties in forming port authorities to foster local economic development. MoDOT's waterways staff promotes the use of Missouri's navigable rivers to make low-cost waterborne transportation benefits available to business. It also assists in capital and administrative funding, acts as an informational clearinghouse, provides technical assistance and represents port interests within industrial and governmental circles. MoDOT's waterways section also provides assistance and funding to two Mississippi River ferry crossings at Ste. Genevieve and Dorena.

Funding Allocation Processes

Capital

- Port capital needs are jointly prioritized annually each year by MoDOT and the Missouri Port Authority Association.

Administrative

- Each port receives a base amount of administrative funding, plus additional funding determined by an agreed-upon set of performance criteria. Performance is evaluated annually.

Ferry Boat

- Both publicly supported ferry services (Mississippi County and Ste. Genevieve County) receive 50% of the available State Ferry Boat Assistance Funds.
- Both publicly supported ferry services receive Federal Ferry Boat Program funds for capital projects. The funds are allocated by federal formula based on number of passengers,

vehicles and total route miles. This federal allocation is administered by MoDOT.

Fast Facts

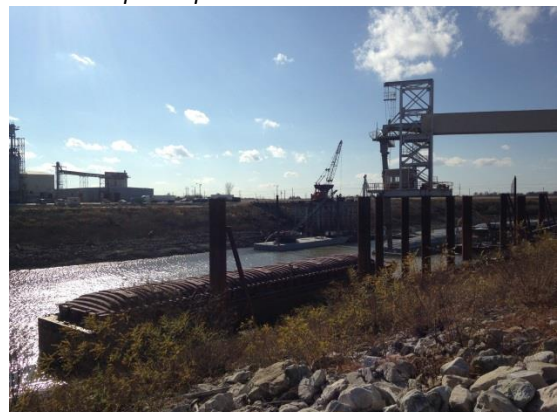
- In Missouri, the Mississippi and Missouri Rivers together are more than 1,000 miles long (that's 250 miles longer than Interstates 44, 55 and 70 combined).
- Over 500 million tons of cargo flow on the Mississippi and Missouri Rivers annually; that is the equivalent of 19 million trucks on the highways.
- Missouri's first port authority was formed in Jefferson County in 1974. Today there are 14 public port authorities and one tri-state port commission.
- Missouri has two publicly supported ferry services on the Mississippi River that carry 17,000 vehicles and 40,000 passengers annually.

Funding Sources

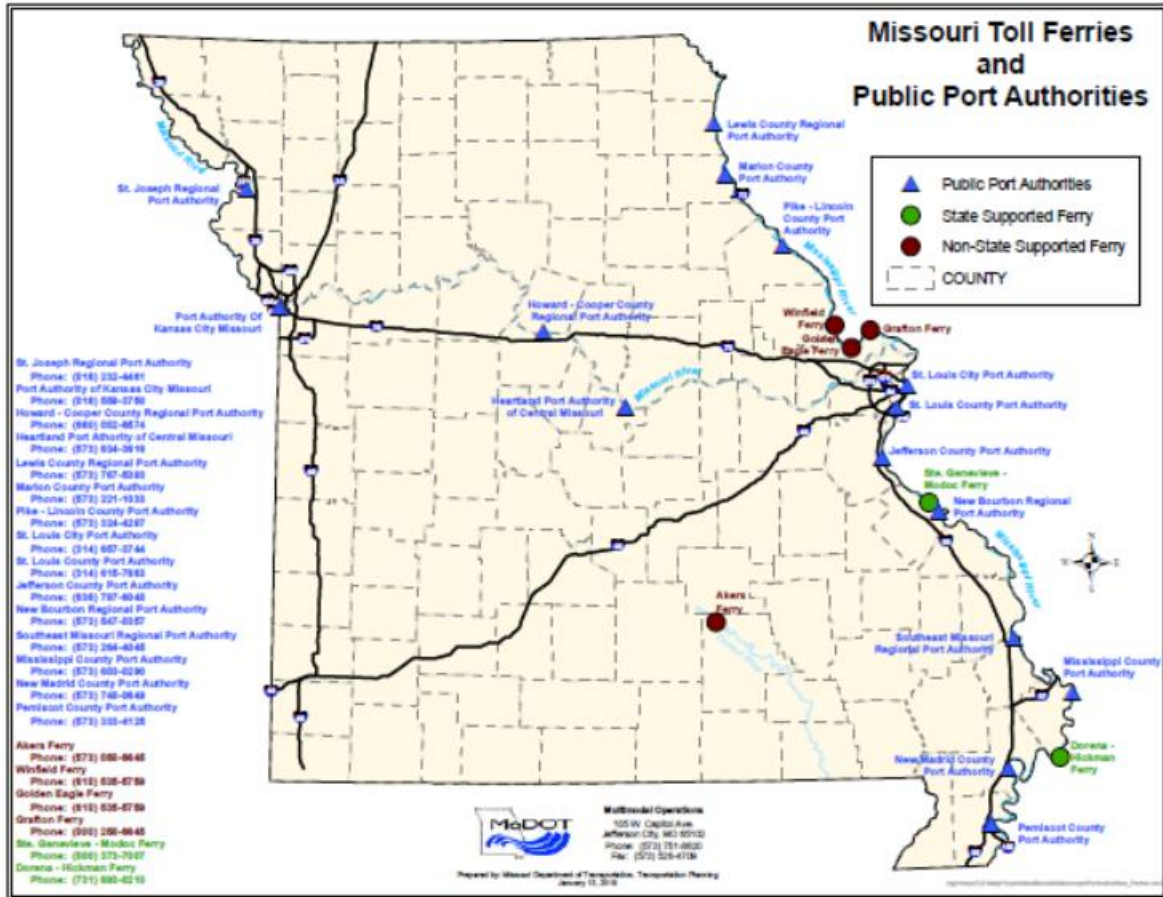
- Administrative Funds: \$600,000 in SFY19 - *from the State Transportation Fund*
- State Ferry Boat Assistance Funds: \$176,000 in SFY19 - *from the State Road Fund*
- Port Capital Improvement Funds: \$7.4 million in SFY19 available *from General Revenue* for statewide improvements.
- Federal Ferry Boat Program - *total annual funding available is \$100,000*

Partners

- United States Army Corps of Engineers - *Maintains river infrastructure. Regulates flow on the Missouri River.*
- United States Coast Guard - *Responsible for navigation safety, including vessel certification, lighting, buoys, etc.*
- United States Maritime Administration - *Part of the US Dept. of Transportation*
- Missouri Port Authority Association - *Association of Missouri's public port directors*



MoDOT – Waterways Overview



MoDOT Waterways:

<http://www.modot.org/othertransportation/waterways/waterwaysgeneralinformation.htm>

US Army Corps of Engineers: <http://www.usace.army.mil>

US Coast Guard: <http://www.uscg.mil>

US Maritime Administration: <http://www.marad.dot.gov>

Missouri Port Authority Association: <http://www.missouriports.org>