

## ADDENDUM NO. 1

**ISSUED BY:** Great River Engineering  
2826 S. Ingram Mill Road  
Springfield, Missouri 65804  
(417) 886-7171  
(417) 886-7591 – FAX

OWN, Inc.  
3213 S. West Bypass  
Springfield, Missouri 65807  
(417) 886-2741

**DATE:** June 18, 2026

**FOR PROJECT:** **Main Street Improvements – Arcadia to Hackberry, Warsaw, Missouri  
(TAP-9901(461) / ARPA #SLFRP4542), AND  
Main Street Non-Motorized Street Improvements – Hackberry St. to Dogwood  
(TAP-9901(559))**

This Addendum is applicable to work herein and shall be understood to be and is an Addendum, and as such shall be a part and included in the Contract. IT IS ESSENTIAL THAT ALL BIDDERS, CONTRACTORS, SUBCONTRACTORS, AND ALL MATERIAL SUPPLIERS READ ALL SECTIONS OF THIS ADDENDUM.

### **Main Street Non-Motorized Street Improvements – Hackberry St. to Dogwood (TAP-9901(559))**

#### **Contract Documents**

- a. **Section A, Page A-7, Bid Schedule:** Bid Item #50, 15 in. Pipe Group B (HDPE) quantities have been updated from 542 LF to 664 LF.
- b. **Section A, Page A-7, Bid Schedule:** Bid Item #51, 20 in. Pipe Group B (HDPE) has been removed from the project.
- c. **Section A, Page A-7, Bid Schedule:** Bid Item #52, 24 in. Pipe Group B (HDPE) quantities have been updated from 4 LF to 8 LF.

#### **Clarification**

Power to the Rapid Flashing Beacon Pedestrian Crosswalk System will be provided by the existing stub-out located on the south side of Main St. located in the general location of the proposed Main St. crossing.

### **SPECIFIC TO BOTH PROJECTS**

#### **State Wage Rates**

For both projects, remove State Wage Rate Annual Order 32 in its entirety and replace with the attached State Wage Rate Annual Order 33 – Annual Wage Order 33 shall be the controlling State Wage Rates for this project.

Additionally, any reference to Annual Wage Order 32 shall be replaced and shall reference Annual Wage Order 33.

#### **Bid Bonds**

Two separate bid bonds will be required for the combined projects.

**Summary of Prebid Meeting**

A non-mandatory prebid meeting was held on Tuesday, June 16<sup>th</sup>, at 2:00 PM at the Warsaw Community Building, 181 W. Harrison Street in Warsaw, Missouri. The agenda and the sign-in sheet are attached as a part of this addendum. There were no items discussed outside of what is included in the agenda with notes. The notes, guidance, and clarifications provided in the Pre-Bid Agenda with Notes (in blue) shall be a full part of this addendum.

**END OF ADDENDUM NO. 1**

**ATTACHMENTS:**

- TAP-9901(559) Bid Schedule (2 pages)**
- Missouri Division of Labor Standards Annual Wage Order No. 33, Benton County (4 pages)**
- Pre-bid Sign-In Sheet (1 page)**
- Prebid Agenda with notes (7 pages)**
- Architectural Resources Survey – Cover and Abstract (2 pages)**



<b>BID SCHEDULE</b>					
<b>Item</b>	<b>Description</b>	<b>Units</b>	<b>Est. Quantity</b>	<b>Unit Price</b>	<b>Extended Total</b>
1	Mobilization (incl. bonding and insurance)	LS	1.0		
2	Contractor Furnished Surveying and Staking	LS	1.0		
3	Removal of Improvements (General)	LS	1.0		
4	Class 3 Excavation (Pipes & Culverts)	CY	400.0		
5	Linear Grading, Class 1	STA	0.6		
6	Removal of Asphalt (Driveways & Misc.)	SY	314.5		
7	Removal of Concrete (Driveways & Misc.)	SY	1,396.4		
8	Type 1 or 5 Aggregate for Base (4 in. thick)	SY	2,695.1		
9	Subgrade Compaction (6-inch depth) (95%)	SY	2,695.1		
10	Truncated Domes	SF	30.0		
11	Curb Ramps	SY	10.0		
12	Concrete Sidewalk, 4-in thick	SY	671.5		
13	Concrete Bikelane, 8-in thick	SY	982.1		
14	Concrete Driveway Replacement (8 in. thick)	SY	383.0		
15	Gravel or Crushed Stone, 4"	SY	50.0		
16	Roll Back Curb & Gutter, Type CG-2	LF	519.0		
17	Barrier Curb & Gutter, Type CG-1	LF	345.0		
18	Concrete Curb (6in. Height and under Type S)	LF	400.0		
19	Concrete Curb (Over 6in. in Height Type S)	LF	100.0		
20	Curb & Gutter Transitions	LF	150.0		
21	Construction Signs	SF	132.0		
22	Type III Moveable Barricade – Sidewalk Closed	EA	2.0		
23	Full Depth Pavement Repair Saw Cut (for perimeter and internal saw cuts)	LF	520.0		
24	Silt Fence	LF	779.0		
25	Alternate Ditch Checks	EA	2.0		
26	Inlet Checks	EA	6.0		
27	Plural Component Liquid Pavement Marking, Straight Arrow	EA	8.0		
28	Plural Component Liquid Pavement Marking, Turn Arrow	EA	15.0		
29	Plural Component Liquid Pavement Marking, Bicycle Symbol White	EA	8.0		
30	Plural Component Liquid Pavement Marking, 25 in white MidBlock (Crosswalk)	EA	7.0		
31	Plural Component Liquid Pavement Marking, 12 in. white yeild triangles	EA	10.0		
32	High Build Acrylic Waterborne Pavement marking w/ Type P Beads, 6" White	LF	4,288.0		
33	Plural Component Liquid Pavement Marking, 4" Solid & Intermittent Yellow Striping	LF	3,695.6		
34	Plural Component Liquid Pavement Marking, 4" Intermittent Yellow Striping	LF	327.0		
35	Rapid Flashing Beacon Pedestrian Crosswalk System	EA	1.0		

36	Bituminous Pavement w/ Tack Coat (BP-1), (2" Thick)	TON	730.0		
37	Bituminous Pavement w/ Tack Coat (PMBB), (6" Thick)	TON	117.0		
38	Cold Milling Bituminous Pavement For Removal of Surfacing (Variable Depth)	SY	1,114.0		
39	Concrete Light Pole Foundations	EA	13.0		
40	Light Poles, 17' Type S (RFD 34030255) (Banner Arm, LED Luminaire, GFI)	EA	13.0		
41	Pull Box, Preformed, Class 1	EA	2.0		
42	Conduit, 1" Rigid w/ Tracer Wire, In Trench	LF	1,875.0		
43	Cable, #10 AWG, Conductor	LF	9,250.0		
44	Cable, #10 AWG, Ground	LF	2,260.0		
45	Trenching, Type 1	LF	1,850.0		
46	U-Channel Posts (3LB)	LF	36.0		
47	Bike Lane Signs (R3-17) 30"x24"	EA	3.0		
48	Street Name Signs (6"x 36") and Frame for Light Pole	EA	2.0		
49	8 in. Pipe Group B (HDPE)	LF	17.0		
50	15 in. Pipe Group B (HDPE)	LF	634		
51	NOT USED				
52	24 in. Pipe Group B (HDPE)	LF	8.0		
53	8" Drain Basin with Dome Grate (ADS Nyloplast or approved equal)	EA	2.0		
54	Reinforcing Steel	LB	686.0		
55	Class B-1 Concrete (Culvert Junction Structure)	CY	4.5		
56	Drop Inlet 2' x2' (Type D)	LF	25.0		
57	Connection to Existing 24" CMP	EA	1.0		
58	Connection to Existing 20" Steel Pipe	EA	1.0		
59	Modify Existing 4'x4' Inlet & Add New Top For Grate	LS	1.0		
60	Channelizers (Trimline)	EA	30.0		
61	Curved Vane Grate and Frame 2' x 2'	EA	5.0		
62	Gutter Transitions for Grate Inlets	LF	60.0		
63	Curved Vane Grate and frame 4'x2'	EA	2.0		

**SUBTOTAL:** \$ \_\_\_\_\_

**TOTAL BID:**

The following Total Bid shall be the summation of all unit and lump sum prices previously indicated for all sections. The Total Base Bid shall be used as the basis for the establishment of the apparent low bidder and shall include all costs required for provision of the previously described work, labor equipment and other items in conformance with the construction plans, specifications and contract documents.

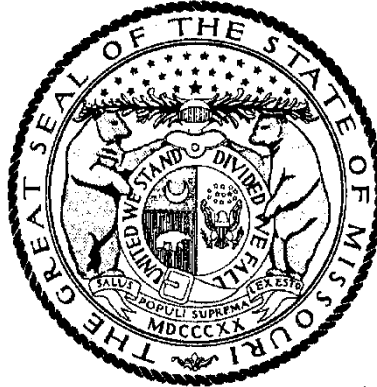
**Numeric Price:** \$ \_\_\_\_\_

**Price In Words:** \_\_\_\_\_

# Missouri

## Division of Labor Standards

### WAGE AND HOUR SECTION



MIKE KEHOE, Governor

# Annual Wage Order No. 33

Section 008  
**BENTON COUNTY**

In accordance with Section 290.262 RSMo 2000, within thirty (30) days after a certified copy of this Annual Wage Order has been filed with the Secretary of State as indicated below, any person who may be affected by this Annual Wage Order may object by filing an objection in triplicate with the Labor and Industrial Relations Commission, P.O. Box 599, Jefferson City, MO 65102-0599. Such objections must set forth in writing the specific grounds of objection. Each objection shall certify that a copy has been furnished to the Division of Labor Standards, P.O. Box 449, Jefferson City, MO 65102-0449 pursuant to 8 CSR 20-5.010(1). A certified copy of the Annual Wage Order has been filed with the Secretary of State of Missouri.

Original Signed by \_\_\_\_\_

Logan Hobbs, Director  
Division of Labor Standards

Filed With Secretary of State: \_\_\_\_\_ **March 10, 2026**

Last Date Objections May Be Filed: **April 9, 2026**

Prepared by Missouri Department of Labor and Industrial Relations

**BENTON COUNTY**

OCCUPATIONAL TITLE	**Prevailing Hourly Rate
Asbestos Worker	\$22.76*
Boilermaker	\$22.76*
Bricklayer - Stone Mason	\$22.76*
Carpenter	\$22.76*
Lather	
Linoleum Layers & Cutter	
Millwright	
Pile Driver	
Cement Mason	\$22.76*
Plasterer	
Communication Technician	\$22.76*
Electrician (Inside Wireman)	\$22.76*
Electrician (Outside Lineman)	\$22.76*
Outside - Groundman	
Outside - Groundman Tree Trimmer	
Outside - Lineman Operator	
Outside - Lineman Tree Trimmer	
Elevator Constructor	\$22.76*
Glazier	\$22.76*
Iron Worker	\$22.76*
Laborer	\$22.76*
Laborer - First Semi-Skilled	
Laborer - General	
Laborer - Second Semi-Skilled	
Laborer - Skilled	
Mason	\$22.76*
Marble Finisher	
Marble Mason	
Terrazzo Finisher	
Terrazzo Worker	
Tile Finisher	
Tile Setter	
Operating Engineer	\$22.76*
Operating Engineer - Group I	
Operating Engineer - Group II	
Operating Engineer - Group III	
Operating Engineer - Group III - A	
Operating Engineer - Group IV	
Operating Engineer - Group V	
Painter	\$22.76*
Plumber	\$22.76*
Pipe Fitter	
Roofer/WaterProofer	\$22.76*
Sheet Metal Worker	\$22.76*
Sprinkler Fitter - Fire Protection	\$22.76*
Truck Driver	\$22.76*
Truck Control Service Driver	
Truck Driver, Teamsters Group I	
Truck Driver, Teamsters Group II	
Truck Driver, Teamsters Group III	
Truck Driver, Teamsters Group IV	

\* The Division of Labor Standards received fewer than 1,000 reportable hours for this occupational title. The public works contracting minimum wage is established for this occupational title using data provided by Missouri Economic Research and Information Center.

\*\*The Prevailing Hourly Rate includes any applicable fringe benefit amounts for each occupational title as defined in RSMo Section 290.210.

**BENTON COUNTY**

<b>OCCUPATIONAL TITLE</b>	<b>**Prevailing Hourly Rate</b>
<b>Carpenter</b>	<b>\$22.76*</b>
<b>Millwright</b>	
<b>Pile Driver</b>	
<b>Electrician (Outside Lineman)</b>	<b>\$22.76*</b>
<b>Outside - Groundman</b>	
<b>Outside - Groundman Tree Trimmer</b>	
<b>Outside - Lineman Operator</b>	
<b>Outside - Lineman Tree Trimmer</b>	
<b>Laborer</b>	<b>\$22.76*</b>
<b>Laborer - General</b>	
<b>Laborer - Skilled</b>	
<b>Operating Engineer</b>	<b>\$22.76*</b>
<b>Operating Engineer - Group I</b>	
<b>Operating Engineer - Group II</b>	
<b>Operating Engineer - Group III</b>	
<b>Operating Engineer - Group IV</b>	
<b>Truck Driver</b>	<b>\$22.76*</b>
<b>Truck Control Service Driver</b>	
<b>Truck Driver, Teamsters Group I</b>	
<b>Truck Driver, Teamsters Group II</b>	
<b>Truck Driver, Teamsters Group III</b>	
<b>Truck Driver, Teamsters Group IV</b>	

Use Heavy Construction Rates on Highway and Heavy construction in accordance iwth the classifications of construction work established in 8 CSR 30-3.040(3).

Use Building Construction Rates on Building construction in accordance with the classifications of construction work established in 8 CSR 30-3.040(2).

If a worker is performing work on a heavy construction project within an occupational title that is not listed on the Heavy Construction Rate Sheet, use the rate for that occupational title shown on the Building Construction Rate Sheet.

\*The Division of Labor Standards received fewer than 1,000 reportable hours for this occupational title. Public works contracting minimum wage is established for this occupational title using data provided by Missouri Economic Research and Information Center.

\*\*The Prevailing Hourly Rate includes any applicable fringe benefit amounts for each occupational title.

# OVERTIME and HOLIDAYS

## OVERTIME

For all work performed on a Sunday or a holiday, not less than twice (2x) the prevailing hourly rate of wages for work of a similar character in the locality in which the work is performed or the public works contracting minimum wage, whichever is applicable, shall be paid to all workers employed by or on behalf of any public body engaged in the construction of public works, exclusive of maintenance work.

For all overtime work performed, not less than one and one-half (1½) the prevailing hourly rate of wages for work of a similar character in the locality in which the work is performed or the public works contracting minimum wage, whichever is applicable, shall be paid to all workers employed by or on behalf of any public body engaged in the construction of public works, exclusive of maintenance work or contractual obligation. For purposes of this subdivision, "**overtime work**" shall include work that exceeds ten hours in one day and work in excess of forty hours in one calendar week; and

A thirty-minute lunch period on each calendar day shall be allowed for each worker on a public works project, provided that such time shall not be considered as time worked.

## HOLIDAYS

January first;  
The last Monday in May;  
July fourth;  
The first Monday in September;  
November eleventh;  
The fourth Thursday in November; and  
December twenty-fifth;

If any holiday falls on a Sunday, the following Monday shall be considered a holiday.

PRE-BID MEETING FOR COMBINED MAIN STREET IMPROVEMENT PROJECTS

PROJECT A: TAP-9901(461) / ARPA #SLFRP4542

PROJECT B: TAP-9901(559)

Tuesday June 16, 2025, 2:00 P.M. 181 W. Harrison, Warsaw, MO 65355

Name	Company & Address	Phone Number	E-mail
SHANNON SHANK	Great River Engineers 2826 S. Ingram Mill Ft. Belknap, MO 65604	417-827-9953	sshank@greatriv.com
Randy Pogue	City of Warsaw 201 E Main Warsaw, MO 65355	660-438-5522	randy.pogue@welcometowarsaw.com
Calvin Thompson	Mega KC 1411 Iroka St MO	816-472-8722	MegaBids@MegaKC
Caleb Hill Corey Marsh	Hartman & Company Inc 1200 E Woodhurst Dr. J-200 Springfield MO 65804	417-838-2558	calebhill@hartman.com, corey.c@hartman.com
Justin Coffer	Advanced Highway and Sign Holtown, MO	417-606-0733	justin@advancedhighwayandsign.com
Kyle Eichler	Do-Rite Construction & Excavating LLC 1719S Hwy 65 Lincoln, MO 65388	666-281-0012	kyle@do-riteconstruction.com
Morgan Neal	OWN, INC. 3213 S. West Bypass Springfield	417-866-2741	mneal@weareown.com

## MEETING AGENDA FOR:

### PRE-BID MEETING FOR COMBINED MAIN STREET IMPROVEMENT PROJECTS

PROJECT A: TAP-9901(461) / ARPA #SLFRP4542

PROJECT B: TAP-9901(559)

Tuesday June 16, 2025, 2:00 P.M. 181 W. Harrison, Warsaw, MO 65355

1. Complete Sign in Sheet
2. Introductions
3. Project Scope of Work Overview. Both projects are along Main Street.

Project A: GRE portion of the combined project.

Due to the ARPA funds, Project A will be the starting point. Located along Main Street between Arcadia Street and Hackberry Street. Arcadia Street to Illinois Street includes construction of an aggregate bicycle lane on the north side of the roadway. Between Illinois Street to Hackberry Street, the project is along both sides of the roadway, and includes full-width asphalt overlay.

Scope of Work: Grading and Embankment, Concrete Bicycle Lanes, Aggregate Bicycle Lane, Street Lighting, Sidewalks, Asphaltic Pavement Widening and overlay, Aggregate Base, Curb and Gutter, Storm Sewers, Driveways, Pavement Markings, and Signage.

Project B: OWN portion of the Combined project.

Located along the south side of Main St. between Hackberry St. and Dogwood Dr.

Scope of work: Construction of a 5' concrete sidewalk and 4' wide concrete bike lane, access connections, storm sewers, curb and gutter, street lighting, asphalt widening, milling and overlay, Pavement Markings, signage, and any incidental work related thereto, including street improvements.

4. Bid award process based on the lowest, responsive, combined bid total
5. Pay applications – separate quantities for the two projects. Mobilization invoice by percent complete of overall project. Refer to JSP.
6. Project Schedules and calendar days  
Project A: 300 days (Project A to be started prior to project B)  
Project B: 365 days
7. All improvements must meet ADA requirements – MoDOT's ADA Checklist is included in the bidding documents.
8. Bidders must be on the official plan holder list and must be on the MoDOT Pre-Approved Contractor list.
9. Federal and State Wage Rates apply. State Wage Rates have been updated to Annual Wage Order 33. [These are included in Addendum No. 1.](#)
10. DBE Goal is 0%, but **all** DBE paperwork must still be submitted.

11. Addenda:

Addendum No. 1 will be issued Friday, June 19<sup>th</sup>. It includes the Pre-Bid Meeting with notes as well as the sign-in sheet, the updated State Wage Rates to be incorporated, and additional questions from bidders.

24" HDPE in lieu of 20" HDPE

This is addressed in the revised Bid Form.

12. Other discussion: Job Special Provisions

ADA truncated domes – match the northside completed project.

Locations for storage of equipment and material and lay down areas.

The blue star on the map below is City owned property and is available for material and equipment storage, as well as for stockpiling topsoil. The City is also working on providing a staging location even closer to the project site (potentially the propane company's property – but this is not yet finalized).

Locations for stockpiling or wasting rock, dirt, etc. See map below.

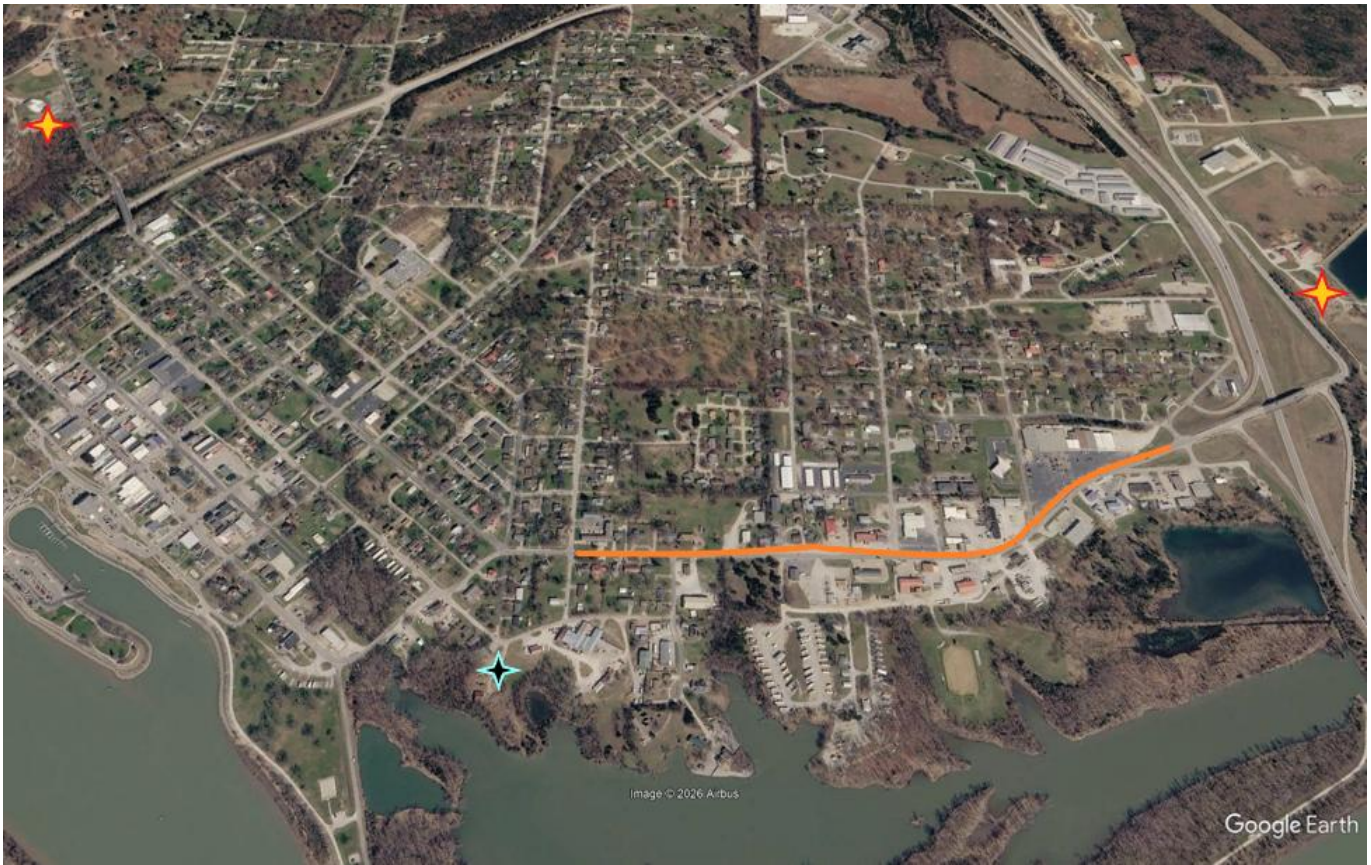
The 2 red stars on the map below indicate locations where waste that is **not** topsoil can be disposed.

Discuss Light Poles, etc.

Light poles are to match those on the north side of Main Street installed with the previously constructed TAP and CDBG projects.

Mailbox Combination

The City will provide and install the mailboxes. Contractor is only responsible for the concrete pad.



**ADDITIONAL ITEMS OF DISCUSSION / CLARIFICATION:**

1. The City wishes to have the Contractor stockpile the milling materials for their use. The location for stockpiling this material will be at the Industrial Park.
2. The asphalt overlay for BOTH projects shall be placed at one time. The timing of this will be controlled by Project A (Arcadia to Hackberry) as it has the shorter time for completion (300 calendar days). With 300 calendar days, the estimated completion date is late April.
3. Regarding the light pole shafts and Buy America / Buy American, a waiver will be provided for the light poles specified.
4. Regarding Project A Bid Form, Item 31, "DROP INLET, 2 FT X 2 FT ID (TYPE D), VARYING DEPTH (9 INLETS)", the quantity unit is LF, which refers to the total depth of the inlets. There are a total of 9 inlets of varying depth. The same applies to Item 33, "CURB INLET, 5' x 3' ID, VARYING DEPTH (2 INLETS)".
5. The power supply and controller for the lighting portion of both Projects A and B were previously installed with the CDBG project.
6. The utility will remove the existing luminaires and luminaire arms from the wood utility poles.
7. Pavement marking materials shall be as shown on the plans for both projects.

**PROJECT A: TAP-9901(461) / ARPA #SLFRP4542**

- A. Contract Time for completion is 300 Calendar Days. Anticipated Notice to Proceed in early to mid-July, which would put the completion date late April 2027.
- B. Liquidated Damages are set according to the table included in the contract documents based on the bid price for Project A.
- C. Last day for Contractor questions is Wednesday, June 17<sup>th</sup> (4 business days prior to bid opening), and the last day to issue an Addendum is Friday, June 19<sup>th</sup> (2 business days prior to bid opening).  
It was noted at the meeting that IF there are Contractor questions as late as Thursday morning to please submit them. We believe that all questions asked to date as of the issuance of the Addendum have been addressed.
- D. The City of Warsaw and/or Great River Engineering will perform the necessary materials testing and on-site inspection for the project. The material testing will be performed by ESS.
- E. Regarding Construction Staking, see Job Special Provisions, Section 30 – Construction Stakes, Lines, and Grades.

Great River Engineering will set INITIAL field control consisting of benchmarks and control monuments.

The Contractor shall employ competent personnel for making position, gradient and alignment determinations and measurements beyond the staking as outlined above. Great River can perform Construction Staking – Contact Brian Viele at 886-7171 to request a quote for this work, if desired.

- F. Access
  - i. Main Street is to remain open to two-way traffic for the duration of the project. If it becomes necessary to close one lane of the roadway (e.g. to install pipe crossings one-half at a time) traffic shall be controlled by the use of flagmen on either end of the one-lane section, and the roadway shall be reopened to two-way traffic prior to Contractor's departure from the site that day.
  - ii. At such time as the concrete bicycle lane is being formed and poured through the intersections at Hackberry Street and at Kraft Street, the south approach may be closed through the use of Barricades as shown on the Traffic Control Plans. Both intersections may not, however, be closed at the same time, and the timing and duration of the closures must be coordinated with, and approved by, the City of Warsaw.
  - iii. Access to all properties must be maintained at all times. This may require constructing drive entrances one half at a time. Specifically, the driveway to Tract 20 (623 E. Main Street) must be constructed one half at a time.

G. Retaining Wall:

- i. The Contractor shall have the option of constructing the retaining wall as shown on the plans by use of either a small block wall, or cast-in-place concrete. In either case, the Contractor shall provide shop drawings for the construction of the wall, signed and sealed by a Professional Engineer licensed to practice in the State of Missouri.
- ii. The Contractor shall also have the option of reducing a portion of the wall through the use of a monolithic curb poured with the sidewalk, up to a maximum height of two (2) feet. If this option is utilized, the Contractor shall provide shop drawings for the construction, signed and sealed by a Professional Engineer licensed to practice in the State of Missouri.
- iii. All shop drawings and plans for the wall construction shall be approved in writing by the Engineer and the Owner prior to commencing any work on the wall.
- iv. Regardless of the method used (small block, cast-in-place, integral curb, etc.), payment for full compliance with this job special provision shall be considered completely covered by the unit bid price for RETAINING WALL, square feet. The area of the wall shall be measured from the finished sidewalk elevation to the top of the wall regardless of method used.

H. Work adjacent to the Warsaw Cemetery.

- i. The project is adjacent to the Warsaw City Cemetery (est. ca. 1820), located on the south side of Main Street at the intersection of Main Street and Hackberry Street. Cemeteries are a federal Section 106 and Historic 4(f) issue and addressed under Missouri State law RSMo 214.270 – 410.
- ii. There is no right-of-way, permanent, or temporary easement that encroaches into the Warsaw Cemetery property. The existing cemetery gate posts and the fence between the sidewalk and the cemetery grounds shall, under no circumstances, be disturbed. All actions adjacent to the cemetery shall be in full compliance with Missouri State Law RSMo 214.270 – 410.
- iii. Damaging anything within the cemetery, including headstones or gateposts could be considered an act of vandalism and a felony. Additionally, due to the age of the cemetery, there is an increased risk of unmarked or relocated graves that may not be within the current boundaries of the cemetery.
- iv. A qualified archaeological monitor must be present during all ground disturbing construction activities for the portion of the project between Kraft Road and Hackberry Street. The archeological monitor to be utilized shall be approved by both the City of Warsaw and MoDOT and must be allowed time to document and collect any artifacts that may be inadvertently discovered.

There was discussion at the meeting regarding whether the presence of a qualified archaeologist would be required. This has since been answered, and yes, the Contractor will be required to provide an archeologist to monitor excavation as it occurs as noted in the Job Special Provisions.

There will be no direct payment for compliance with the JSP, as it shall be considered incidental to other bid items.

The Warren Center for Archaeological Research provided the cultural review for the project with a specific focus on the cemetery. The Principal Investigator for this work was:

Kevin Cupka Head, RPA  
Director  
Warren Center for Archaeological Research  
Missouri State University  
901 South National Avenue  
Springfield, Missouri 65897.

Additionally, the cover and abstract for the report have been added to these notes.

**PROJECT B: TAP-9901(559)**

- A. Contract Time for completion is 365 Calendar Days. Anticipated Notice to Proceed in early to mid-July, which would put the completion date late June 2027.
- B. Liquidated Damages are at \$1,100 per day
- C. Contractor may utilize the City's stockpile at the south end of their industrial park on the east side of US 65. See Job Special Provisions 2.4
- D. The sidewalk alignment through the Phillips 66 sign shall maintain a minimum vertical clearance of 8 feet between the sidewalk surface and the lowest portion of the sign.
- E. Access
  - i. Access to all properties shall be maintained at all times during construction. Work affecting drive entrances or property access shall be staged such that access to only one driveway serving a property is closed at any given time. For properties with a single wide driveway, construction activities shall be phased to maintain access by completing work on one-half of the driveway at a time while keeping the remaining half open for use.
  - ii. No construction activities shall occur on property owned by BMG Value Fund. If an easement has been obtained, the Contractor shall be provided with an alternate layout by the City. The Contractor shall notify and coordinate with the City prior to commencing any construction activities near this area.
- F. Last day for Contractor questions is Wednesday, June 17<sup>th</sup> (4 business days prior to bid opening), and the last day to issue an Addendum is Friday, June 19<sup>th</sup> (2 business days prior to bid opening).

It was noted at the meeting that IF there are Contractor questions as late as Thursday morning to please submit them. We believe that all questions asked to date as of the issuance of the Addendum have been addressed.

- G. The City of Warsaw will perform the necessary materials testing and on-site inspection for the project.  
The material testing will be performed by ESS.
- H. The Contractor shall employ competent personnel for making position, gradient and alignment determinations and measurements beyond the staking as outlined above.

**ARCHITECTURAL RESOURCES SURVEY OF PROPOSED MAIN STREET  
SIDEWALK IMPROVEMENTS, CITY OF WARSAW, BENTON COUNTY,  
MISSOURI.**

Prepared by:

Alan O'Connor  
Project Supervisor  
Warren Center for Archaeological Research

Holly Higgins, MSHP  
Senior Architectural Historian  
Stantec

Principal Investigator:  
Kevin Cupka Head, RPA (989198)  
Warren Center for Archaeological Research  
Missouri State University  
901 South National Avenue  
Springfield, Missouri 65897

Prepared for:  
Randy Pogue  
City of Warsaw, Missouri  
[randy.pogue@welcometowarsaw.com](mailto:randy.pogue@welcometowarsaw.com)

MoDOT Project No. TAP 9901 (461) GAP

Federal Highway Administration

Research Report No. CAR 1989

Revised September 2, 2025

## Abstract

This report presents the results of an architectural resources survey of proposed Main Street sidewalk improvements in Warsaw, Benton County, Missouri. The survey was completed on behalf of the City of Warsaw and LePage Engineering as requested by the Missouri Department of Transportation, in compliance with Section 106 of the National Historic Preservation Act. The area of potential effects encompassed approximately 1.83 acres (0.74 ha), including proposed construction limits and an additional 50-foot buffer in consideration of effects on the built environment. A background records search was undertaken on the Missouri State Historic Preservation Office's online portal on February 26<sup>th</sup>, 2025. The records search identified one National Register of Historic Places-listed property (Warsaw Swinging Bridge), approximately one mile west of the survey area, and no previous architectural surveys within one mile.

Field investigations were completed on April 22, 2025, with methods consisting of visual examination and photo-documentation of all 28 parcels overlapping the area of potential effects. Of the 28 parcels, 24 contain at least one above-ground resource, and 22 have architectural resources 45 years of age or older. A total of 55 Architectural Resources were identified, of which 34 were 45 years of age or older. The majority of these architectural resources were twentieth-century houses or commercial buildings and associated outbuildings, structures, or objects, which are recommended not eligible for the National Register of Historic Places. Adhering to Criteria Consideration D, Warsaw City Cemetery (AR 12.1) may be eligible for listing in the NRHP under Criterion A in the Area of Settlement as a good example of a city cemetery reflecting the early history of Warsaw (circa 1831–1865). Further archival research and documentation outside the surveyed area would be necessary to confirm this assessment and delineate what portion(s) of the cemetery would contribute to its historic significance. Regardless, the project would have *no adverse effects* on this or other historic properties. Therefore, project clearance is recommended.