



# Bridge Replacement and Interchange Improvement Project at Routes A/B over Interstate 70, near Pendleton in Warren Co.



## Project Summary

The Missouri Department of Transportation (MoDOT), working with its consultant Jacobs Engineering Group, is preparing for a bridge replacement and interchange improvement project at Routes A/B, over Interstate 70 near Pendleton in Warren County.

## Project Purpose and Need

The Routes A/B interchange, located between Jonesburg and Warrenton, is currently a standard diamond configuration with stop controlled intersections at the ramp terminals and outer roads. The existing bridge over I-70, built in 1961, is 24' wide with no shoulders and is scheduled for replacement due to its condition.

## Project Schedule

Project Milestone	Time-Frame
Public Meeting	February 3, 2025
Letting	February 2025
Under Contract	Spring 2025
Under Construction	2025-2026
Project Completion	Spring 2026

## Project Goals

Interchange improvements at this location include:

- A corridor realignment, with the new bridge to be constructed east of the existing location
- A new 56' wide bridge consisting of 12' driving lanes, 12' left turn lane and 10' shoulders
- A southbound Route B right turn lane to West Veterans Memorial Parkway
- A northbound Route B right turn lane to eastbound I-70 on-ramp
- Interchange improvements to accommodate the proposed I-70 template with the addition of a third lane, and improved bridge clearance and span lengths

Over the course of the project, motorists can expect the various traffic impacts, including temporary route closures and detours, as the project progresses through each phase of construction.

To avoid any detour conflicts with nearby projects, this project is scheduled to be completed prior to the start of the Routes E/Y bridge replacement in Montgomery County.

Visit the project website at <https://www.modot.org/route-a-and-route-b-bridge-replacement-over-interstate-70-warren> to view display materials, submit comments and learn more about the project.

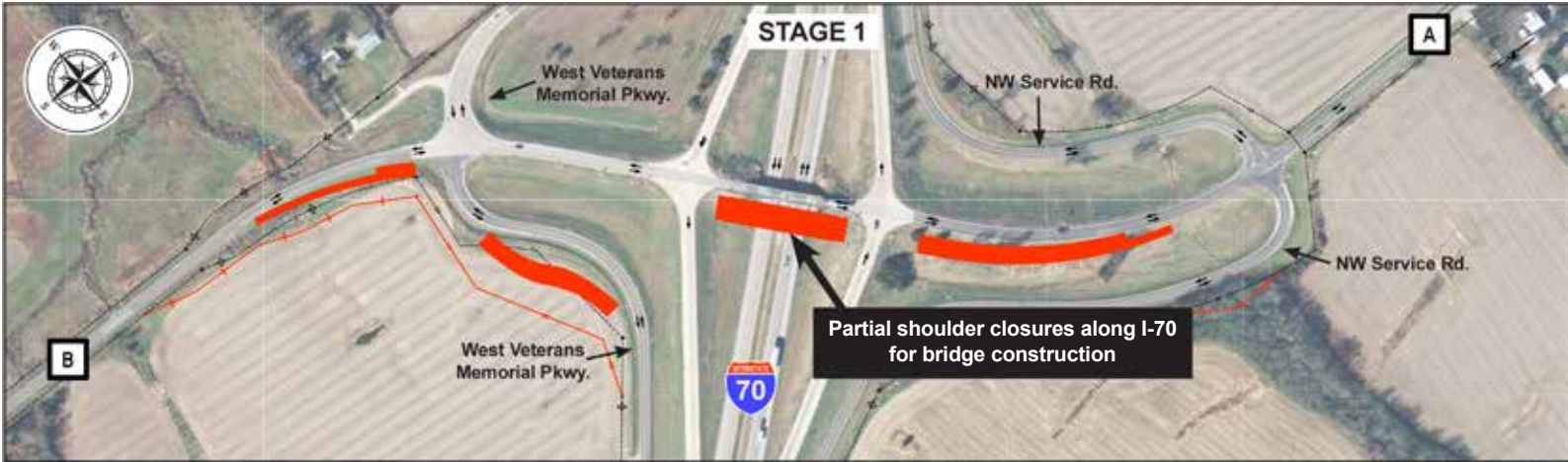




# Stages of Construction: 1-5

Bridge Replacement and Interchange Improvement Project  
at Routes A/B over I-70, near Pendleton in Warren County

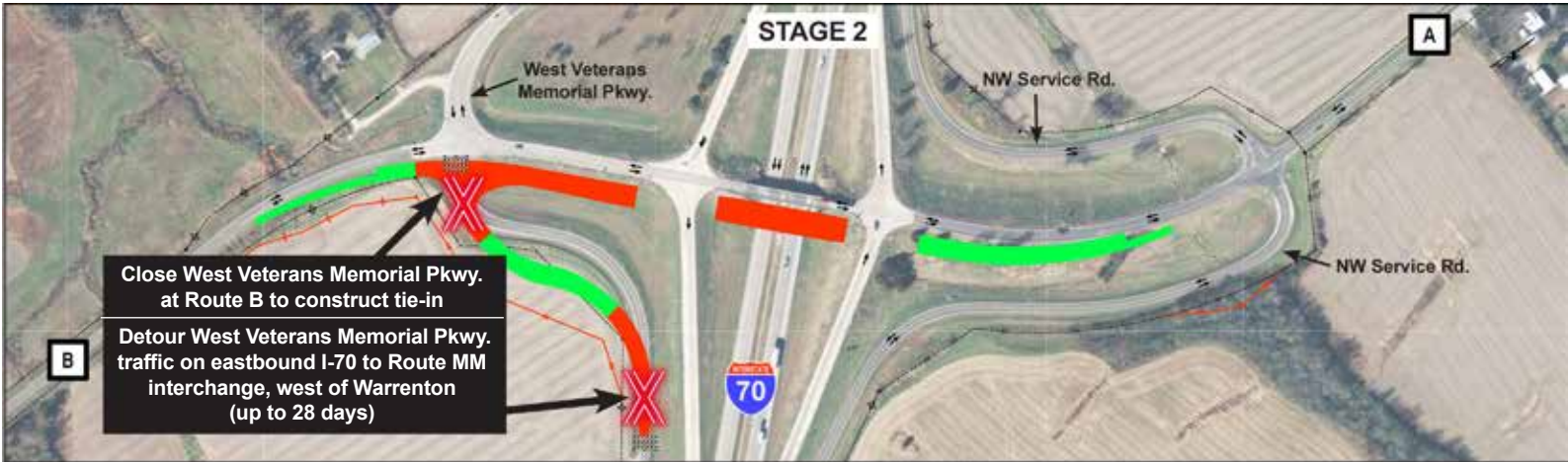
LEGEND	
STAGE CONSTRUCTION	
COMPLETED CONSTRUCTION	
EXISTING RIGHT OF WAY	
PROPOSED RIGHT OF WAY	
TRAFFIC DIRECTION	
BARRICADE	



## Stage 1

### Construct Off-Line Segments of Roadways

- Bridge construction begins
- Partial shoulder closures along I-70 for bridge construction
- Construct off-line segments of Route A, Route B, and West Veterans Memorial Pkwy.



## Stage 2

### Bridge and Road Construction

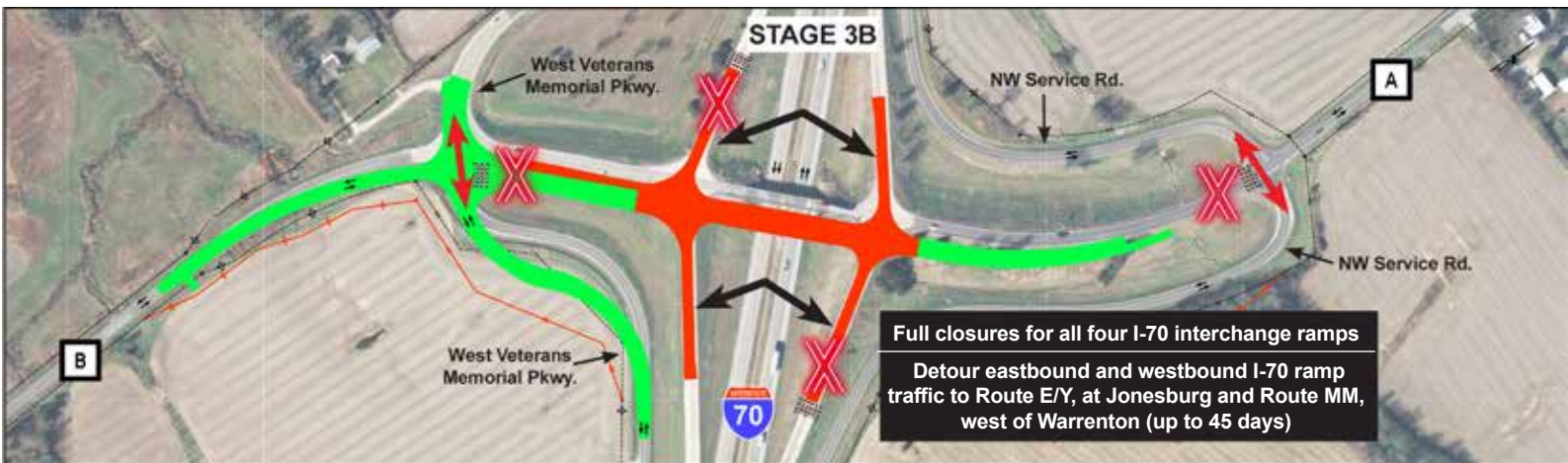
- Continue bridge construction
- Close West Veterans Memorial Pkwy. at Route B to construct tie-in
- Detour West Veterans Memorial Pkwy. traffic on eastbound I-70 to Route MM interchange, west of Warrenton (up to 28 days)



## Stage 3A

### Bridge and Road Construction

- Close West Veterans Memorial Pkwy. west of Route B to complete tie-in
- Close Route B south of West Veterans Memorial Pkwy. to construct tie-in
- Detour Route B traffic to MO 19 or MO 47 (up to 7 days)



## Stage 3B

### Bridge and Road Construction

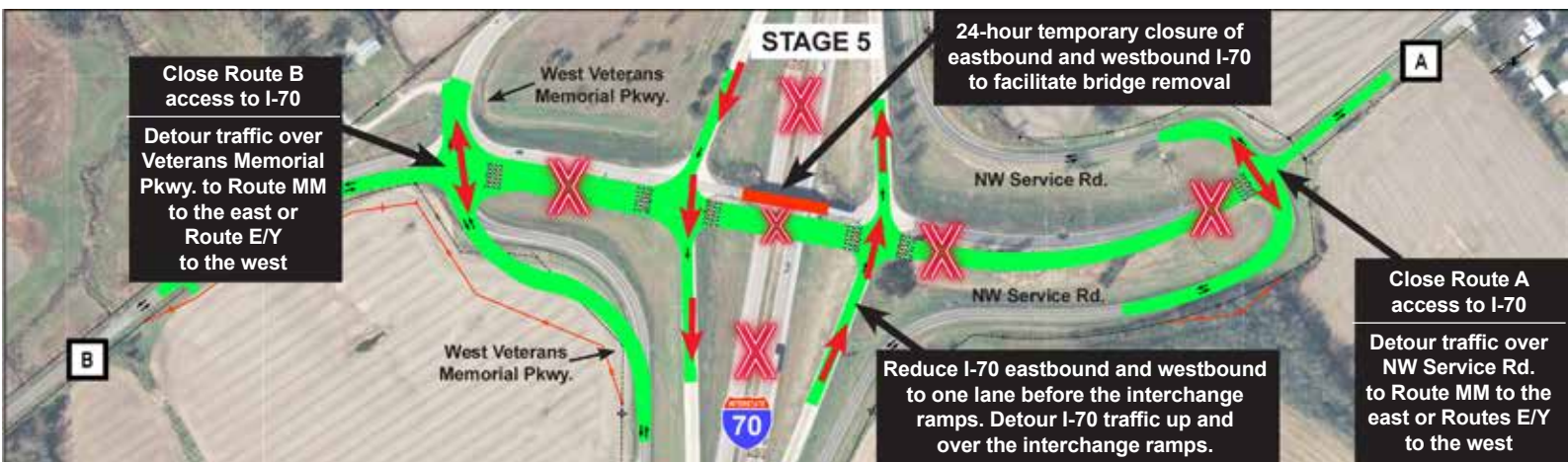
- Maintain I-70 traffic in both directions
- Reopen Route B and West Veterans Memorial Pkwy. east of Route B
- Full closures for all four I-70 interchange ramps
- Detour eastbound and westbound I-70 ramp traffic to Route E/Y, at Jonesburg and Route MM, west of Warrenton (up to 45 days)



## Stage 4

### Road Construction

- Open new Routes A/B bridge, ramps and West Veterans Memorial Pkwy. to traffic
- Close Route A north of NW Service Road to complete tie-in
- Detour Route A to MO 47 to NW Service Road to Route W (up to 35 days)



## Stage 5

### Existing Bridge Demolition

- 24-hour temporary closure of eastbound and westbound I-70 to facilitate bridge removal
- Reduce I-70 eastbound and westbound to one lane before the interchange ramps. Detour I-70 traffic up and over the interchange ramps
- Close Routes A/B access to I-70
- Detour Routes A/B traffic over Veterans Memorial Pkwy. or NW Service Rd. to Route MM to the east or Routes E/Y to the west



## Frequently Asked Questions

**Q: How much does the project cost?**

**A:** Approximately \$12 million

**Q: What are the anticipated impacts?**

**A:** Various traffic impacts will be in place as the project progresses. MoDOT will make every reasonable effort to reduce delays due to construction. Customers can anticipate temporary traffic impacts throughout the project. More information regarding traffic impacts will be shared through news releases and social media for each stage of construction as details become available.

**Q: How will construction affect local businesses?**

**A:** MoDOT is committed to ensuring that businesses and patrons near the project limits maintain access throughout the duration of the project.

**Q: How can I stay updated about the project?**

**A:** Stay updated on news about roadwork in your area by signing up for emails at [eUpdates](#) at MoDOT.org

**Q: Who can I contact if I have further questions?**

**A:** Questions about the project may be directed to MoDOT's Project Manager or Area Engineer listed below:

## Project Contacts



**Kimberly Trainor, P.E.**

East Project Director  
Improve I-70


[kimberly.trainor@modot.mo.gov](mailto:kimberly.trainor@modot.mo.gov)  
(573) 231-2786



**Jeff Niemeyer**

Area Engineer  
Northeast District


[jeffrey.niemeyer@modot.mo.gov](mailto:jeffrey.niemeyer@modot.mo.gov)  
(573) 808-3562



[modot.org/improvei70](http://modot.org/improvei70)

**Stay Up-to-Date on I-70 Projects in your Area!**

Scan the QR code for more information on the Improve I-70 program or specifically the Warrenton to Wentzville project.



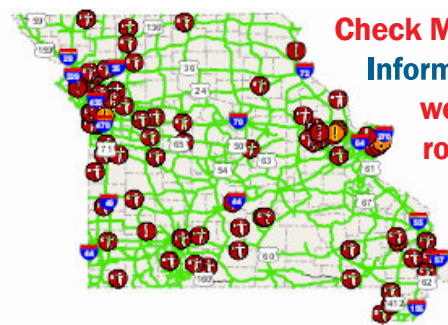
[modot.org/improvei70/warrentonwentzville](http://modot.org/improvei70/warrentonwentzville)

## Welcome to E-updates and Text Alerts



Stay informed on road closures, events, and more through MoDOT's e-update text/email alert system. [modot.org](http://modot.org)

## Traveler Information Map



**Check MoDOT's Traveler Information Map for weather-related road conditions, flood closures and work zone locations.**



Missouri Department of Transportation  
1-888 ASK MODOT (275-6636)  
[www.modot.org/northeast](http://www.modot.org/northeast)



To stay updated on the progress of this project, sign up for email and text alerts at <https://modotweb.modot.mo.gov/eUpdatesPublic/Account/Login?ReturnUrl=/eUpdatesPublic>. For more information, contact MoDOT's Customer Service Center toll-free at 1-888-ASK-MoDOT (275-6636).