

OPTION 3

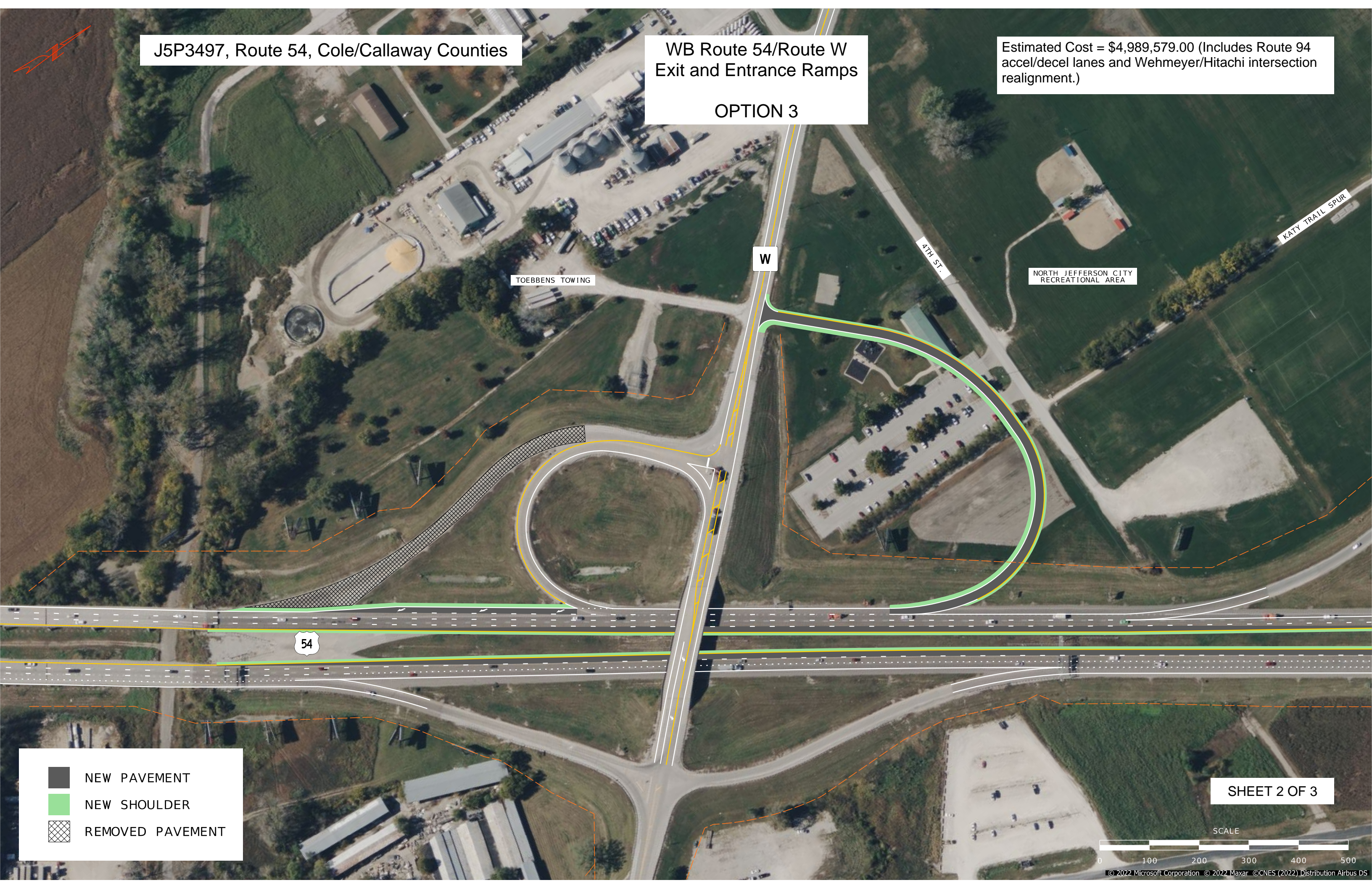


J5P3497, Route 54, Cole/Callaway Counties

WB Route 54/Route W
Exit and Entrance Ramps

Estimated Cost = \$4,989,579.00 (Includes Route 94
accel/decel lanes and Wehmeyer/Hitachi intersection
realignment.)

OPTION 3



TOEBBENS TOWING

W

4TH ST.

NORTH JEFFERSON CITY
RECREATIONAL AREA

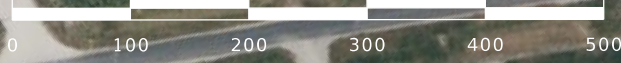
KATY TRAIL SPUR

54

NEW PAVEMENT
NEW SHOULDER
REMOVED PAVEMENT

SHEET 2 OF 3

SCALE



OPTION 3

